



MONTHLY FARM REPORT

North Carolina Field Office



Post Office Box 27767 | Raleigh, North Carolina 27611 | Telephone: 919-707-3333 | Email: ncagstat@ncagr.gov

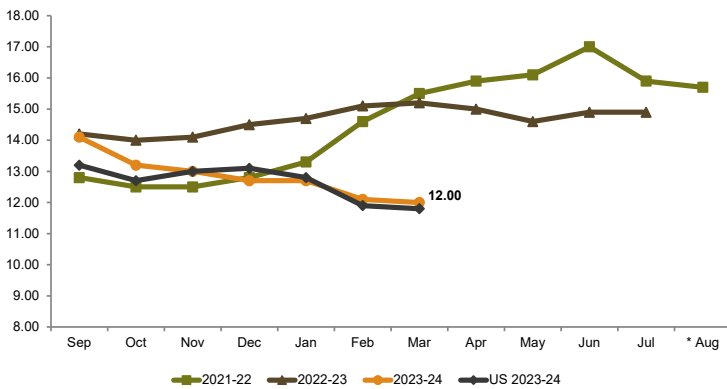
www.ncagr.gov/stats or www.nass.usda.gov

Released May 28, 2024



MONTHLY PRICE RECEIVED FOR SOYBEANS

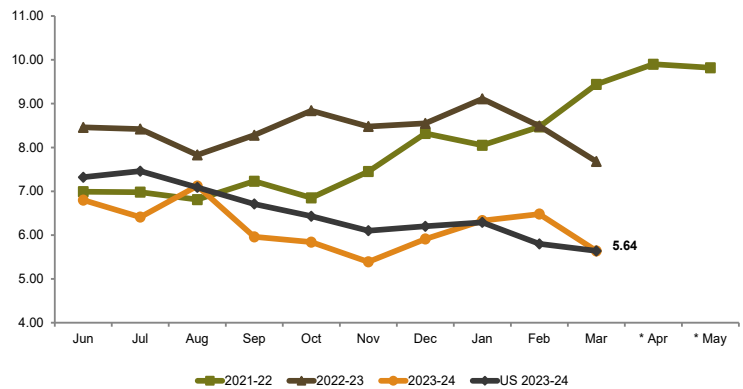
(Dollars per Bushel)



* North Carolina prices for August 2023 were withheld to avoid disclosing data for individual operations or because of an insufficient number of reports to establish an estimate.

MONTHLY PRICE RECEIVED FOR WINTER WHEAT

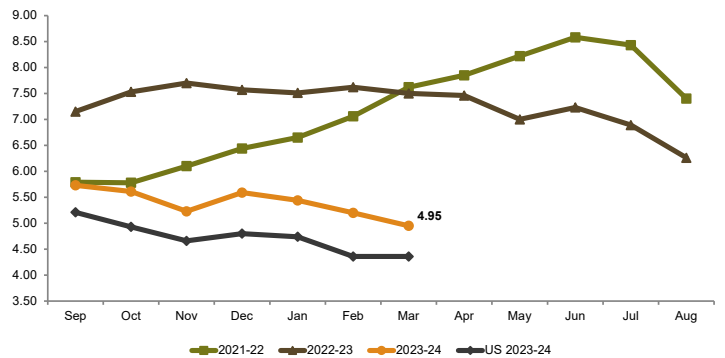
(Dollars per Bushel)



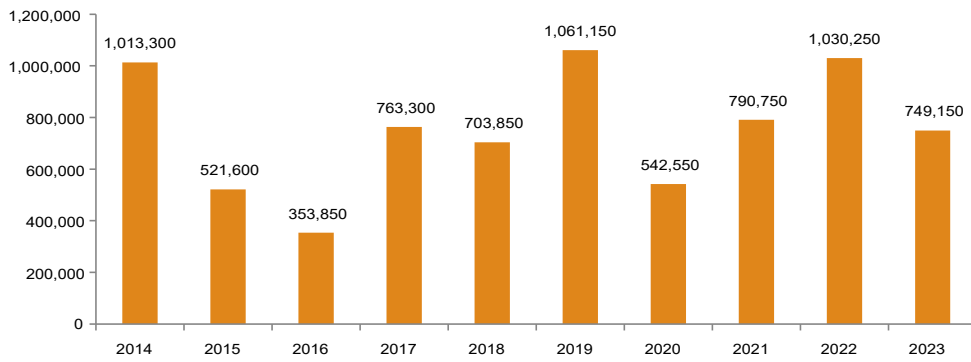
* North Carolina prices for April and May 2023 were withheld to avoid disclosing data for individual operations or because of an insufficient number of reports to establish an estimate.

MONTHLY PRICE RECEIVED FOR CORN

(Dollars per Bushel)



COTTON GINNINGS - RUNNING BALES GINNED



ON FARM HAY STOCKS

On farm hay stocks totaled 180,000 tons as of May 1, 2024, up 44% from the 125,000 tons reported the same time last year.

WINTER WHEAT

Winter wheat production in North Carolina is expected to total 20.48 million bushels for 2024, down 27% from the 28 million bushels produced in 2023. Yield per acre at 64 bushels is down 6 bushels per acre from last year's estimate of 70 bushels.

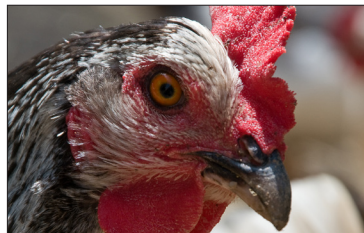
EGG PRODUCTION - March

State	Layers On Hand		Total Eggs Produced		Table Eggs		Hatching Eggs	
	2023	2024	2023	2024	2023	2024	2023	2024
	<i>Thousands</i>		<i>Million Eggs</i>					
Alabama	11,649	10,853	222	210	37	35	185	175
Georgia	20,264	20,133	448	434	249	236	199	198
North Carolina	15,784	16,098	353	362	187	196	166	166
South Carolina	3,789	3,585	85	80	63	57	23	23
Virginia	2,635	2,502	62	62	29	32	33	30
United States	382,665	378,533	9,233	9,294	7,927	7,994	1,306	1,300

CHICKS HATCHED - March

State	Broiler-Type		
	2023	2024	Percent Change
	<i>Thousand Head</i>		<i>+/-</i>
Alabama	123,597	122,952	-1
Arkansas	85,848	89,062	+4
Delaware	19,206	19,707	+3
Florida	4,189	4,054	-3
Georgia	123,824	125,970	+2
Kentucky	22,035	26,837	+22
Louisiana	12,082	12,181	+1
Maryland	28,855	27,534	-5
Mississippi	61,229	61,687	+1
Missouri	33,559	31,802	-5
North Carolina	86,391	88,064	+2
Oklahoma	24,973	20,816	-17
Pennsylvania	24,191	27,697	+14
South Carolina	19,746	20,518	+4
Texas	63,730	66,494	+4
Virginia	23,415	19,618	-16
California, Tennessee, & West Virginia	45,859	47,559	+4
Other States ¹	44,105	41,672	-6
United States	846,834	854,224	+1

¹ Not published separately to avoid disclosing data for individual operations.



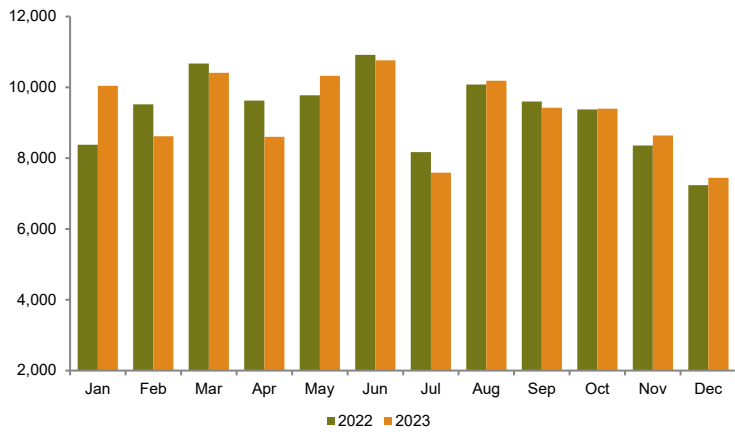


MILK PRODUCTION: January – March

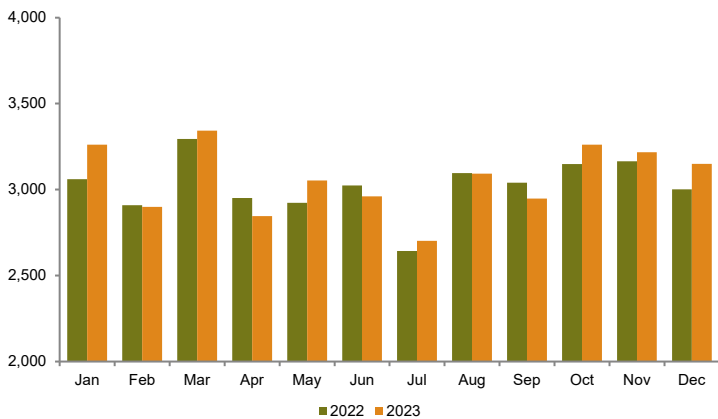
State	Milk Cows ¹		Milk Per Cow ²		Milk Production ³		Percent Change
	2023	2024	2023	2024	2023	2024	
	<i>Thousand Head</i>		<i>Pounds</i>		<i>Million Pounds</i>		
Kentucky	46.0	43.0	5,326.1	5,209.3	245.0	224.0	-8.6
North Carolina	39.0	38.0	6,025.6	6,026.3	235.0	229.0	-2.6
Tennessee	26.0	25.0	4,730.8	4,720.0	123.0	118.0	-4.1
Virginia	68.0	67.0	5,264.7	5,358.2	358.0	359.0	0.3
West Virginia	4.5	4.0	3,777.8	3,750.0	17.0	15.0	-11.8
United States	9,418.0	9,333.0	6,034.9	6,095.1	56,837.0	56,886.0	0.1

¹ Includes dry cows. Excludes heifers not yet fresh. ² Milk per cow is derived. ³ Excludes milk sucked by calves.

N.C. COMMERCIAL CATTLE SLAUGHTER - Total Live Weight (Thousand Pounds)



U.S. COMMERCIAL HOG SLAUGHTER - Total Live Weight (Million Pounds)



NORTH CAROLINA ANNUAL BLUEBERRY SUMMARY

	Harvested	Yield	Production	Utilized Production	Price	Value of Utilized Production
	<i>Acres</i>	<i>Lb per Acre</i>	<i>Thousand Lb.</i>		<i>Dollars</i>	<i>Thousand Dollars</i>
2019	9,600	4,160	39,900	39,420	1.70	67,024
2020	8,600	4,510	38,800	38,490	1.52	58,526
2021	8,600	4,820	41,500	40,380	1.58	63,614
2022	8,600	5,080	43,700	43,530	1.84	79,893
2023	9,300	5,990	55,700	54,420	1.92	104,620

