

North Carolina Crop Progress & Condition Report

Released: July 29, 2024



CROP SUMMARY FOR THE WEEK ENDING JULY 28, 2024

Crop information in this report is provided voluntarily by county officials of the Cooperative Extension Service, FSA, NRCS, and other knowledgeable individuals.

DAYS SUITABLE FOR FIELD WORK

This Week	Last Week	Last Year
3.2	4.7	6.8

SOIL MOISTURE PERCENT

	VS	ST	A	SS
Subsoil Moisture	3	10	69	18
Topsoil Moisture	3	9	60	28

VS= Very Short ST = Short A = Adequate SS = Surplus

CROP PROGRESS PERCENT – WITH COMPARISONS

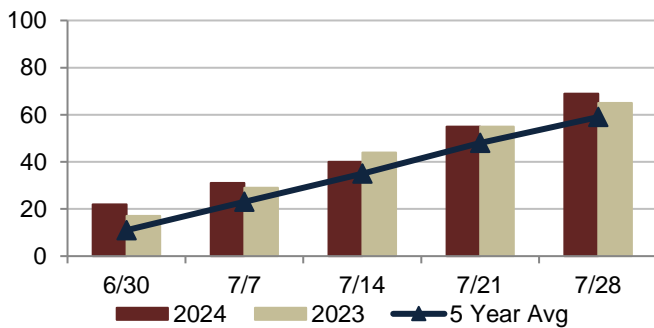
	This Week	Last Week	Last Year	5Yr Avg
PHENOLOGICAL:				
Corn Dented	39	17	21	28
Corn Dough	74	58	55	67
Corn Silking	95	91	91	94
Cotton Setting Bolls	66	50	38	51
Cotton Squaring	96	91	88	88
Peanuts Pegging	93	81	86	85
Soybeans Blooming	69	55	65	59
Soybeans Setting Pods	42	33	42	36
HARVESTED:				
Apples	21	17	n/a	n/a
Corn for Silage	14	n/a	n/a	n/a
Hay: Second Cutting	42	36	41	57
Peaches	53	50	53	56
Tobacco Flue-Cured	12	n/a	11	11

CROP CONDITION PERCENT

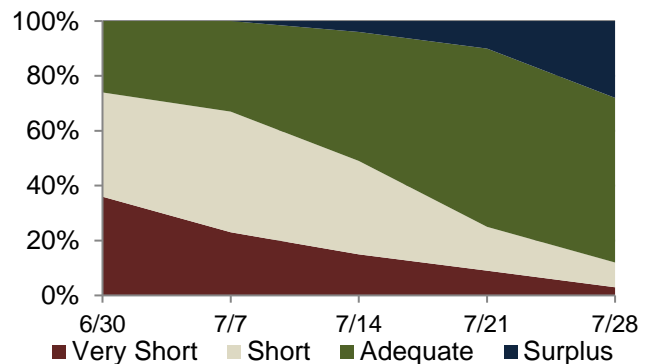
	VP	P	F	G	EX
Apples	0	6	14	80	0
Corn	32	31	20	16	1
Cotton	1	5	30	57	7
Hay	5	36	33	20	6
Pasture	6	24	45	20	5
Peanuts	1	4	23	58	14
Sorghum	11	20	24	36	9
Soybeans	5	16	29	44	6
Sweet Potatoes	1	6	31	55	7
Tobacco Burley	0	0	18	82	0
Tobacco Flue-Cured	4	13	34	42	7

VP = Very Poor P = Poor F = Fair G = Good EX = Excellent

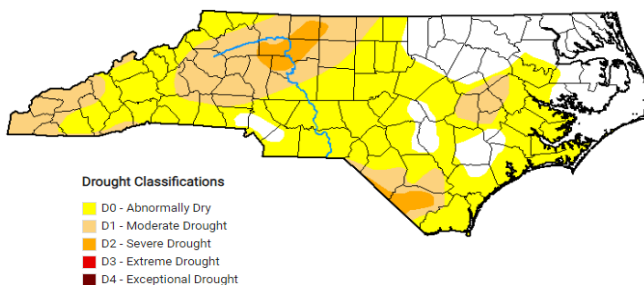
SOYBEANS BLOOMING



TOPSOIL MOISTURE PERCENT

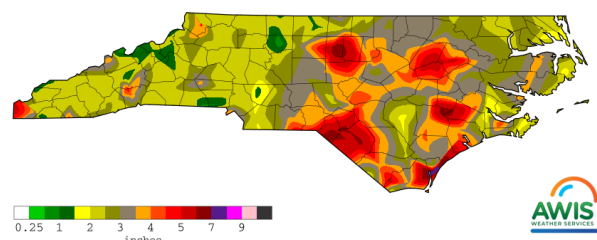


Map depicts current drought conditions as of July 23, 2024.



The US Drought Monitor focuses on broad scale conditions. Information provided for North Carolina is relative to information provided from all other states and the North Carolina Drought Management Advisory Council. Local conditions may vary. <http://www.ncdrought.org/>

Precipitation for 07/22/2024 to 07/28/2024



Map depicts accumulations through dates listed. This product is made possible by AWIS Weather Services, Inc. <http://www.awis.com/>

WEATHER SUMMARY FOR THE WEEK ENDING JULY 28, 2024 ¹

Location	Precipitation (Inches)				Temperature (Degrees F.)				
	This Week		Year to Date		This Week				
	Total	Departure from Normal	Total	Departure from Normal	High	Low	Avg.	Departure from Normal	Degree Days (YTD)
Asheboro	3.15	2.07	28.72	1.4	90	64	77	-1	2777
Asheville_Munic	4.86	3.98	34.92	6.53	85	66	75	2	2408
Boone	3.19	2.12	32.6	0.79	81	60	70	2	1721
Burlington AP	5.6	4.55	34.71	7.68	89	62	77	-2	2790
Charlotte	2.16	1.31	28.28	2.76	90	69	80	-1	3213
Clayton WTP	4.43	3.31	26.7	-0.53	90	63	78	-1	3008
Clinton_2NE	1.78	0.17	25.6	-5.69	92	65	79	-1	3090
Elizabeth City 1.8 SE	2.54	1.42	33.22	5.08	91	64	78	-1	2894
Elizabethtown_NC	3.54	2.09	25.6	-2.87	91	66	80	0	3346
Erwin_AP	3.79	2.53	26.89	-1.7	90	66	78	0	3073
Fayetteville_AP	3.61	2.29	24.89	-2.5	93	67	80	-1	3383
Frisco	2.47	1.22	27.03	-3.3	87	73	80	0	2971
Gastonia-Gaston	1.02	0.11	26.87	-0.76	89	66	79	-1	2912
Goldsboro_AFB	3.11	1.85	24.35	-4.47	92	64	80	-1	3377
Greensboro_AP	2.87	1.89	33.45	7.87	88	66	77	0	2794
Greenville Airport	2.92	1.66	26.35	-2.7	91	63	78	-1	3157
Hickory	2.7	1.81	31.36	1.51	89	68	77	0	2774
Jacksonville_AP	4.2	2.58	30.72	0.18	90	66	79	-1	3174
Jacksonville_EOC	4.2	2.52	33.88	1.08	90	66	79	-1	3149
Jefferson_2E	4.65	3.63	38.44	10.12	82	60	70	0	1685
Kinston Airport	3.16	1.97	26.14	-2.57	91	64	78	-2	3177
Louisburg	4.51	3.46	32.18	5.5	90	59	76	-1	2746
Mt_Airy_2W	2.04	1.02	31.54	4.61	88	63	76	0	2346
New_Bern	1.36	-0.18	30.23	-1.26	92	66	80	1	3279
North_Wilkesboro	1.84	0.86	32.63	3.07	86	65	76	0	2575
Oxford_NC	2.98	1.88	29.59	3.49	87	60	74	-4	2413
Raleigh	3.77	2.79	25.97	0.41	91	64	79	1	3304
Red Springs 3.8 NW	1.93	0.58	21.72	-7.99	91	65	79	-1	3151
Reidsville_2NW	1.19	0.14	25.89	-0.69	91	65	77	0	2772
Roanoke_Rap_Dam	2.65	1.53	29.06	1.88	92	64	78	-1	2826
Robbinsville_AG	2.04	0.8	33.77	-5.07	86	64	74	1	2317
Rockingham	3.88	2.46	27.43	-1.84	93	66	79	0	3194
Roxboro Airport	3.07	2.01	29.23	3.47	86	59	74	-2	2382
Southern_Pines	2.24	1.09	20.75	-7.3	92	64	79	0	3141
Statesville_2NNE	2.19	1.35	29.94	2.73	88	65	76	-1	2565
Tarboro_1S	5.24	4.16	27.09	-0.21	90	64	77	-1	2987
Vale_Ag_2SW	3.66	2.68	33.37	5.09	89	67	77	-1	2648
Wadesboro_AP	3.41	2.22	28.16	-0.41	90	65	79	-2	3010
Washington	2.72	1.3	25.99	-4.38	91	63	79	-1	3097
Waynesville_1E	1.73	0.81	30.04	1.35	85	64	74	4	1910
Whiteville_7NW	3.81	2.47	25.22	-5.15	91	66	80	-1	3316
Williamston_1E	2.4	1.14	29.31	0.54	91	63	79	0	3087
Wilmington_AP_NC	2.85	1.09	26.18	-6.04	93	66	81	0	3469
Winston-Salem	0.72	-0.26	26.19	0.61	90	67	79	1	2937

¹ This data is made possible by AWIS Weather Services, Inc. <http://www.awis.com/> ...