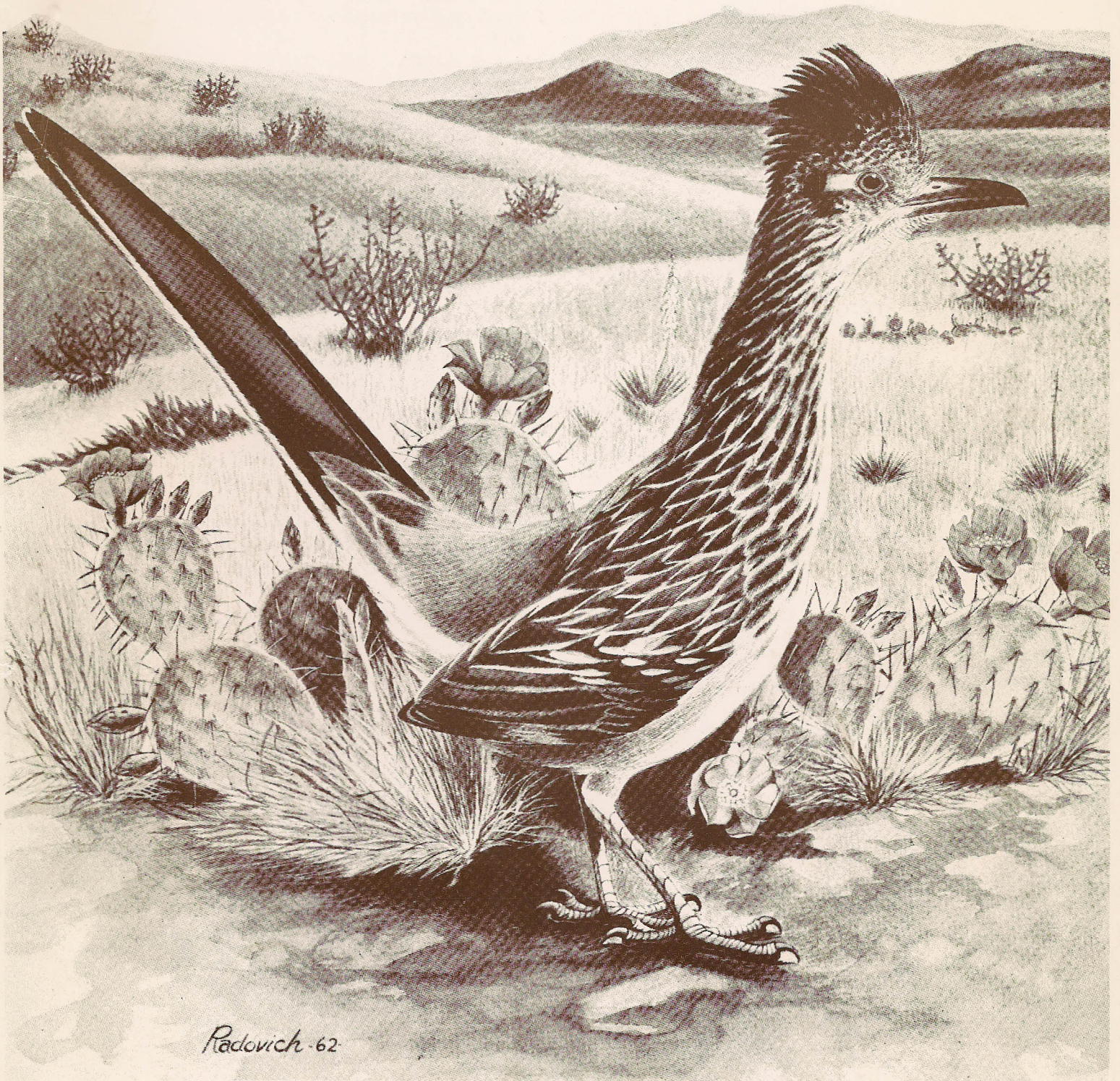


New Mexico Agricultural Statistics 1987



NEW MEXICO AGRICULTURAL STATISTICS

1987

Prepared By

United States Department of Agriculture
New Mexico Agricultural Statistics Service
P.O. Box 1809
Las Cruces, New Mexico 88004

Donald G. Gerhardt, State Statistician
James G. Hand, Deputy State Statistician

Livestock Statistician
Juan Albelo

Crops Statistician
Steve Hoel

NMDA Statistician
Craig L. Mapel

Data Processing
Judy Lawrence

Support Staff

Judy Johnson
Mary Hendon
Doris Lucht
Dolores Anaya
Rose Mary Pino

Issued Cooperatively By

U.S. Department of Agriculture
National Agricultural Statistics Service

Charles Caudill
Administrator

New Mexico
Department of Agriculture

Frank A. DuBois
Director/Secretary

COVER PHOTOGRAPH: The Roadrunner is officially recognized as the State Bird.

TABLE OF CONTENTS

INTRODUCTION

ACKNOWLEDGMENT

GENERAL

New Mexico Map.....	4
Number of Farms and Land in Farms.....	5
Irrigated Cropland and Sources of Water....	6
Acres of Irrigated Cropland.....	7
Usual Planting and Harvesting Dates.....	8
Climate of New Mexico.....	9
Fertilizer Shipped into New Mexico.....	10
Commercial Feed Sold in New Mexico.....	11

PRICES AND INCOME

Prices and Income.....	12
Balance Sheet of Farm Sector.....	13
Income from Farming.....	14
Cash Receipts by Commodity.....	16
Cash Receipts by Commodity and County.....	18
Prices Received for Field Crops.....	28
Prices Received for Livestock.....	29

LIVESTOCK

Summary.....	30
Cattle and Calves:	
Shipments.....	31
Number and Value.....	32
Number by Class.....	33
Commercial Slaughter.....	33
Production and Income.....	34
Inventory, Calf Crop and Disposition....	34
Number by County.....	35
Number on Feed by County.....	36
Range and Pasture Conditions.....	36
Milk Production and Value.....	37
Prices Received for Milk.....	37
Sheep and Lambs:	
Number and Value.....	38
Commercial Slaughter.....	39
Number by County.....	39
Production and Income.....	40
Number by Class.....	40
Number on Feed by County.....	41
Inventory, Lamb Crop and Disposition....	41
Wool Production and Value.....	41
Prices Received for Wool.....	41
Hogs and Pigs:	
Production and Income.....	42
Number on Farms, Pig Crop & Disposition..	42
Commercial Slaughter.....	43
Number by County.....	43

Poultry:

Number by Class.....	44
Eggs and Number of Layers.....	44
Prices Received for Eggs.....	44
Number by County.....	45

FIELD CROPS

Summary.....	46
Acres and Value of Principal Field Crops..	47
Wheat.....	48
Wheat by County.....	49
All Hay.....	50
All Hay by County.....	50
Alfalfa and Other Hay.....	51
Alfalfa Hay by County.....	51
Sorghum.....	52
Sorghum by County.....	53
Barley.....	54
Barley by County.....	55
Corn.....	56
Corn by County.....	57
Upland Cotton.....	58
Upland Cotton by County.....	58
Cottonseed.....	59
American-Pima Cotton.....	60
American-Pima Cotton by County.....	60
Potatoes.....	61
Potatoes by County.....	61
Peanuts.....	62
Peanuts by County.....	62
Government Program Payments.....	63

FRUITS, NUTS, AND VEGETABLES

Apples.....	64
Apples by County.....	64
Pecans.....	65
Pecans by County.....	65
Lettuce:	
Monthly Prices Received.....	66
Spring.....	66
Fall.....	67
Spring by County.....	67
Fall by County.....	67
Onions:	
Monthly Prices Received.....	68
Acres, Yield, Production and Value....	68
Acres by County.....	69
Chile:	
Acres, Yield, Production and Value....	70
Processed.....	71
Acres by County.....	71
Grapes.....	72

TABLE OF CONTENTS

NEW MEXICO DEPARTMENT OF AGRICULTURE

OFFICE OF THE DIRECTOR/SECRETARY
Box 3189/Las Cruces, New Mexico 88003
Telephone (505) 646-3007

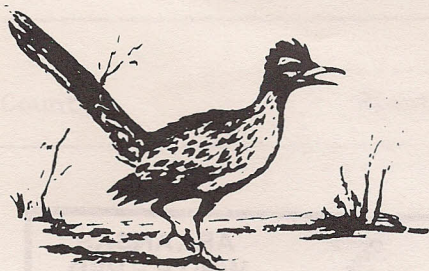


TO THOSE INTERESTED IN NEW MEXICO'S AGRICULTURE:

The New Mexico Department of Agriculture (NMDA) is pleased to publish agricultural statistics for our state. NMDA feels the gathering and recording of figures concerning agricultural enterprise in the Land of Enchantment is one of the most important activities of this department. We are pleased to work cooperatively with USDA to this end and to present valid information for use by the agricultural industry, academicians, and the public, as the need arises.

Sincerely,

Frank A. DuBois
Director/Secretary



NEW MEXICO AGRICULTURAL STATISTICS SERVICE

P.O. BOX 1809 • LAS CRUCES, NEW MEXICO 88004 • PHONE (505) 523-8168

NATIONAL AGRICULTURAL STATISTICS SERVICE • NEW MEXICO DEPARTMENT OF AGRICULTURE

ACKNOWLEDGMENT

We are pleased to present the 1987 edition of New Mexico Agricultural Statistics. This bulletin is published as a cooperative effort between the New Mexico Agricultural Statistics Service, U. S. Department of Agriculture and the New Mexico Department of Agriculture, and is the twenty-seventh annual bulletin in a series dating back to 1962.

In the bulletin we have attempted to provide the most complete accumulation of current statistical data available relating to agriculture in New Mexico. This issue contains the primary data series of State and county estimates for 1987 and comparable data for 1986 and earlier years.

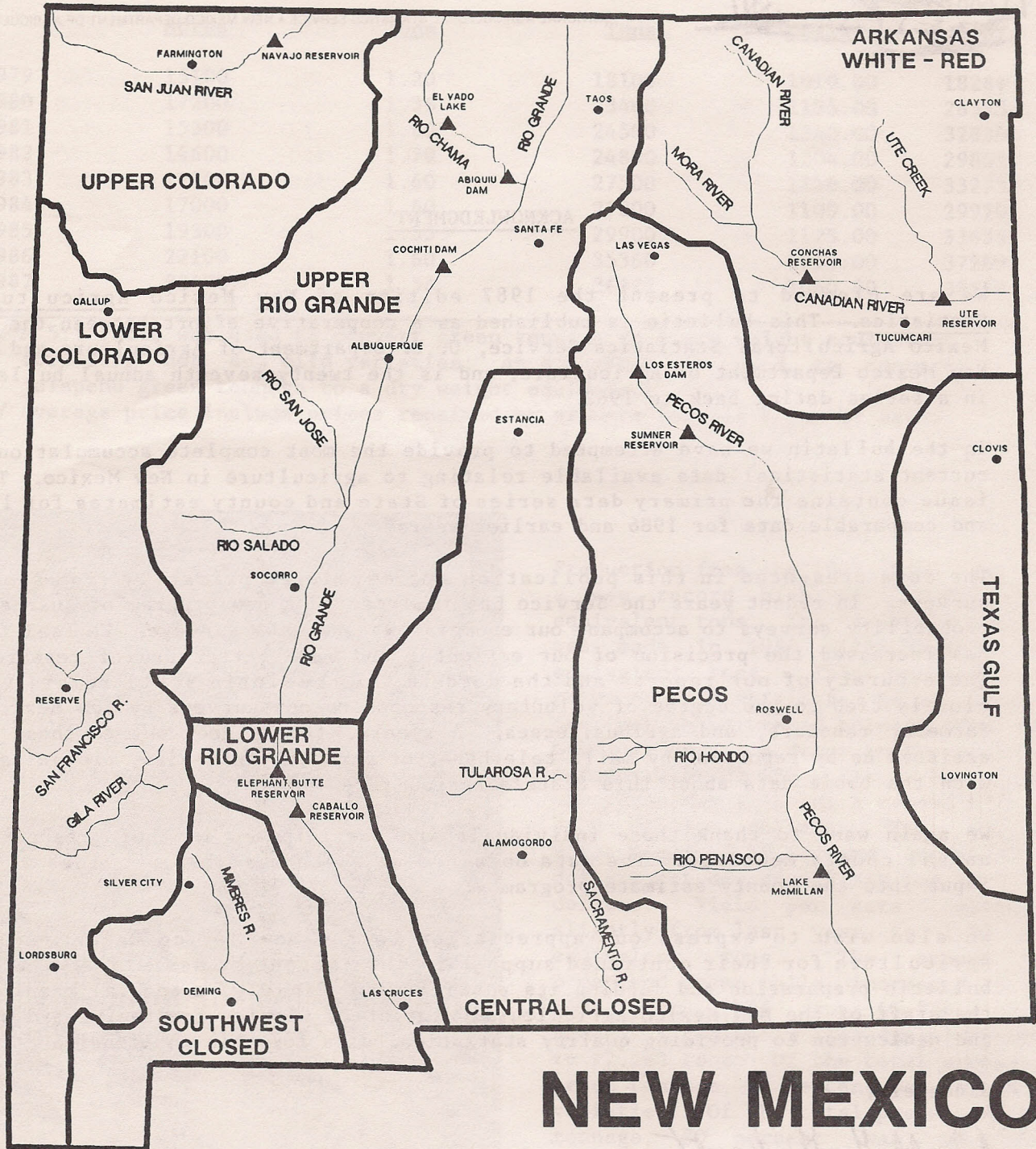
The data presented in this publication are developed primarily from sample surveys. In recent years the Service has implemented a new program of quarterly probability surveys to accompany our enumerative and mail surveys. We feel this has increased the precision of our estimates and made better use of resources. The accuracy of our reports and the data in this bulletin still remain very closely tied to the degree of voluntary response to our surveys by New Mexico's farmers, ranchers, and agribusinesses. A special thanks goes out to those who assisted us by reporting by mail, telephone, or personal interview, providing us with the basic data about this State's agriculture.

We again want to thank those individuals who participated in their respective annual county meetings. The data obtained at these meetings provides vital input into the county estimate program.

We also wish to express our appreciation to the New Mexico Department of Agriculture for their continued support in this effort by assisting with the bulletin preparation and funding its publication. Finally, a special thanks to the staff of the New Mexico Agricultural Statistics Service for their hard work and dedication to providing quality statistical data for this publication.

Sincerely,

Donald G. Gerhardt
State Statistician



NEW MEXICO

Farm Numbers and Land in Farms

Year	Number of Farms in operation	Land in all Farms 1/	Number of Cattle Ranches	Number of Milk Cow Farms 2/	Number of Sheep Ranches	Number of Hog Farms
	1000 Farms	Million Acres	-----Number 3/-----			
1940	34.1	38.9				
1950	23.6	47.5				
1960	18.2	51.5				
1970	12.4	47.8	9000	2200	1400	1500
1972	12.0	47.5	8600	2000	1300	1500
1973	12.0	47.5	8000	1900	1300	1500
1974	12.2	47.0	8500	1500	1200	1700
1975 4/	12.0	47.0	8500	1800	1200	1700
1976	12.3	46.9	8500	1800	1300	1700
1977	12.6	46.8	8500	1800	1400	1700
1978	13.0	46.8	8300	1700	1400	1700
1979	13.3	46.8	8100	1700	1400	1900
1980	13.5	46.8	8500	1800	1500	2100
1981	14.0	46.8	9000	1800	1600	1900
1982	14.0	46.0	9500	1700	1600	1700
1983	14.0	46.0	9000	1500	1600	1500
1984	14.0	45.8	9000	1400	1600	1300
1985	13.8	45.0	9000	1400	1500	1200
1986	13.6	44.6	9000	1300	1500	1200
1987 5/	13.5	44.6	9000	1200	1400	1100

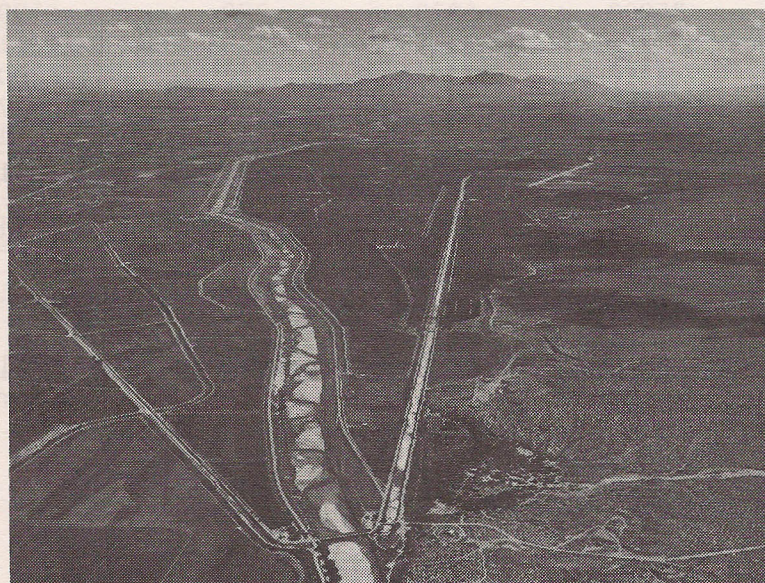
1/ This does not include approximately 22.2 million acres of BLM & Forest Service land which is leased to farmers and ranchers on a per head basis.

2/ Included in operations with cattle.

3/ Includes farms and ranches having one or more head of species on hand at any time during the year.

4/ NEW DEFINITION beginning in 1975: Farms and ranches with annual sales or potential sales of \$1,000 or more.

5/ Preliminary.



Courtesy: Bureau of Reclamation

Irrigated Cropland and Sources of Water, 1987 ^{1/}

County	Source of Water			Total Irrigated Cropland	Total Acres Irrigated
	Surface Only	Ground Only	Surface & Ground 2/		
-----Acres-----					
BERNALILLO	6810	360	3460	10630	7445
CATRON	2010	240	370	2620	1195
CHAVES	3260	78970	15590	97820	87420
CIBOLA	6300	500	2260	9060	3240
COLFAX	30800	---	---	30800	16395
CURRY	---	222000	80	222080	90115
DE BACA	6140	7080	---	13220	9650
DONA ANA	---	9370	86660	96030	78370
EDDY	15180	35470	25040	75690	46910
GRANT	1840	3380	1730	6950	3315
GUADALUPE	3730	450	---	4180	3420
HARDING	---	4670	---	4670	2555
HIDALGO	---	37640	2780	40420	8595
LEA	119240	---	---	119240	63295
LINCOLN	2230	1920	2160	6310	5145
LUNA	10670	61970	1310	73950	32250
McKINLEY	6240	200	---	6440	3805
MORA	15460	---	---	15460	13300
OTERO	3450	13490	2350	19290	5665
QUAY	40550	14940	---	55490	29630
RIO ARRIBA	40330	500	280	41110	32345
ROOSEVELT	---	143670	---	143670	95230
SAN JUAN	105110	---	10390	115500	79450
SAN MIGUEL	13370	150	---	13520	12434
SANDOVAL	16410	80	780	115500	8230
SANTA FE	5850	11340	880	18070	14595
SIERRA	3050	2940	5410	11400	8730
SOCORRO	3330	1310	16600	21240	19580
TAOS	35900	5230	770	41900	29070
TORRANCE	---	38110	---	38110	16940
UNION	8310	51300	390	60000	53850
VALENCIA	18930	---	9640	28570	21930
STATE	524500	747280	188930	1460710	904099

1/ Preliminary; includes crops irrigated, crops planted on irrigated land but not irrigated, and idle and fallow land in crop rotation.

2/ Surface and ground are considered to furnish a combined source of irrigation water supply.

SOURCE: Sources of Irrigation Water and Irrigated and Dry Cropland Acreages in New Mexico, by County, 1985-87, New Mexico State University, Agricultural Experiment Station

Acres of Irrigated Cropland ^{1/}

County	1970	1975	1980	1985	1986	1987
BERNALILLO	13240	11290	10630	10630	10630	10630
CATRON	2700	2700	2620	2620	2620	2620
CHAVES	100100	98720	98720	97820	97820	97820✓
CIBOLA	---	---	---	8660	9060	9060
COLFAX	34780	33200	33200	30800	30800	30800
CURRY	190000	208000	222080	222080	222080	222080✓
DE BACA	9790	13020	13220	13220	13220	13220
DONA ANA	97330	96430	96030	96030	96030	96030✓
EDDY	74610	75010	76440	75690	75690	75690✓
GRANT	8010	7300	7060	6950	6950	6950
GUADALUPE	3830	4180	4180	4180	4180	4180
HARDING	6270	6550	4670	4670	4670	4670
HIDALGO	35240	36480	41420	40420	40420	40420
LEA	99000	112000	119240	119240	119240	119240✓
LINCOLN	5800	6310	6310	6310	6310	6310
LUNA	71460	72440	73940	73940	73950	73950✓
McKINLEY	6440	6440	6440	6440	6440	6440
MORA	18000	15460	15460	15460	15460	15460
OTERO	17100	17960	19290	19290	19290	19290
QUAY	50620	53600	55490	55490	55490	55490✓
RIO ARRIBA	41110	41110	41110	41110	41110	41110
ROOSEVELT	103700	125000	138240	143670	143670	143670✓
SAN JUAN	59700	59730	88350	107500	114700	115500
SAN MIGUEL	13500	13500	13520	13520	13520	13520
SANDOVAL	16270	16270	16960	17270	17270	17270
SANTA FE	15840	16370	17840	17840	18070	18070
SIERRA	8840	9110	9110	11400	11400	11400
SOCORRO	17820	19810	20630	21240	21240	21240
TAOS	41900	41900	41900	41900	41900	41900
TORRANCE	33330	34850	37280	38110	38110	38110
UNION	39710	49750	57700	60000	60000	60000✓
VALENCIA	43690	43590	39250	28570	28570	28570
STATE	1279730	1348080	1428330	1452070	1459910	1460710

1/ Preliminary. Includes idle, fallow, and diverted acreage.

SOURCE: Sources of Irrigation Water and Irrigated and Dry Cropland Acreages in New Mexico, by County, 1985-87, New Mexico State University, Agricultural Experiment Station.

Usual Planting and Harvesting Dates

Crop	1987 Harvested Acreage (1000 Acres)	Usual Planting Dates	Usual Harvesting Dates			Principal Counties
			Begins	Most Active	Ends	
FIELD CROPS:						
BARLEY	11.0					
FALL SOWN		SEP 1-OCT 15	JUN 10	JUN 20-JUL 10	JUL 20	CURRY-SAN JUAN-CHAVES
SPRING SOWN		FEB 15-APR 1	JUN 15	JUN 20-JUL 10	AUG 1	LUNA-DONA ANA-EDDY
CORN, ALL	65.0	APR 15-MAY 20	SEP 25	OCT 5-OCT 30	NOV 20	TORRANCE-SAN JUAN-UNION CURRY-ROOSEVELT
COTTON	75.9	APR 10-MAY 20	OCT 10	OCT 25-NOV 30	DEC 20	CHAVES-DONA ANA-EDDY LUNA-ROOSEVELT
HAY, ALFALFA	240.0		MAY 1		OCT 20	CHAVES-DONA ANA-EDDY SAN JUAN-VALENCIA
PEANUTS FOR NUTS	12.4	MAY 10-JUN 1	OCT 5	OCT 10-OCT 25	NOV 10	ROOSEVELT
SORGHUM, ALL	143.0	MAY 10-JUL 1	OCT 15	OCT 20-NOV 15	DEC 15	ROOSEVELT, CURRY, QUAY
WHEAT	340.0					
WINTER		AUG 25-OCT 15	JUN 15	JUN 20-JUL 10	JUL 20	CURRY-QUAY-ROOSEVELT
DURUM		JAN 1-FEB 20	JUN 20	JUN 20-JUL 15	JUL 20	DONA ANA
VEGETABLES:						
CHILE PEPPERS	23.4					
RED		MAR 1-APR 1	OCT 1	OCT-NOV	DEC 15	CHAVES-SIERRA
GREEN		MAR 1-APR 1	AUG 1	AUG-SEP	OCT 15	DONA ANA-LUNA
LETTUCE						
SPRING	1.7	JAN 15-FEB 1	APR 25	MAY 1-MAY 15	JUN 5	
FALL	1.2	AUG 1-AUG 20	OCT 5	OCT 10-NOV 10	NOV 15	DONA ANA-LUNA-SIERRA
ONIONS	5.4					
GRANO		OCT 1-OCT 15	MAY 25	JUN 1-JUL 1	JUL 25	
SWEET SPANISH		JAN 20-MAR 15	JUL 15	JUL 15-AUG 15	OCT 1	DONA ANA-LUNA
POTATOES	10.0	MAR 5-APR 1	JUL 15	AUGUST	SEP 15	CURRY-ROOSEVELT
		APR 20-MAY 10	SEP 1	SEP 20-OCT 1	OCT 20	SAN JUAN-TORRANCE
FRUITS:						
APPLES						
NORTH	---		SEP 1	SEP 1-OCT 20	OCT 30	RIO ARRIBA-SAN JUAN BERNALILLO-SANDOVAL SANTA FE
SOUTH	---		AUG 15	SEP 1-OCT 15	OCT 30	DONA ANA-LINCOLN CHAVES-OTERO-SIERRA
GRAPES	---		AUG 15	SEP 1-SEP 30	OCT 15	GRANT-LUNA-SIERRA
NUTS:						
PECANS	---		NOV 1	NOV 15-DEC 31	JAN 1	DONA ANA-CHAVES-LUNA

Climate, 1987

County	Station	Elevation (feet)	Years of Record	Growing Season			Annual Precipitation		
				Median Last Spring Freeze	Median First Fall Freeze	Median Length (days)	Years of Record	Mean (inches)	1987
Bernalillo	Albuquerque 1/	5326	30	04-19	10-31	194	30	8.12	8.34
Catron	Luna Ranger Station	7050	29	06-22	09-12	78	30	14.59	18.58
Chaves	Roswell 2/	3500	15	04-04	11-02	212	30	9.70	16.20
Cibola	Grants	6520	25	05-25	10-03	124	32	10.05	13.76
Colfax	Raton Filter Plant	6920	27	05-12	10-11	149	33	15.94	23.13
Curry	Clovis 3 SSW	4280	30	04-18	10-25	189	30	16.48	24.28
De Baca	Ft. Sumner	4025	30	04-17	10-22	187	30	13.14	13.99
Dona Ana	Las Cruces 3/	3881	30	04-12	10-30	201	30	8.31	9.20
Eddy	Carlsbad	3120	30	03-29	11-07	223	30	11.94	16.58
Grant	Ft. Bayard	6142	30	05-01	10-23	174	30	14.19	15.01
Guadalupe	Santa Rosa	4620	30	04-21	10-21	182	30	13.56	17.82
Harding	Mosquero 1 NE	5465	22	05-03	10-14	160	30	15.45	17.61
Hidalgo	Lordsburg 4 SE	4250	30	04-22	10-30	191	30	10.40	11.00
Lea	Hobbs	3615	30	04-04	11-07	216	30	14.79	20.51
Lincoln	Carrizozo	5438	30	04-30	10-17	169	30	12.61	11.18
Luna	Deming	4305	18	04-15	10-31	196	79	8.61	10.07
McKinley	Gallup Airport	6600	30	05-26	09-29	126	30	9.66	13.05
Mora	Valmora	6300	30	05-18	09-29	133	30	15.33	18.28
Otero	Alamogordo	4350	30	04-06	11-02	209	30	11.18	11.84
Quay	Tucumcari 4 NE	4096	30	04-19	10-25	189	30	14.49	15.82
Rio Arriba	Chama	7850	30	06-14	09-14	91	30	19.01	20.45
Roosevelt	Portales	4010	30	04-24	10-19	177	30	15.34	25.32
San Juan	Aztec Ruins Nat'l Mon.	5644	30	05-20	10-06	139	30	9.31	12.54
San Miguel	Las Vegas Airport	6470	30	05-15	10-06	144	30	14.99	19.84
Sandoval	Cuba	7045	30	06-06	09-21	106	30	13.06	10.69
Santa Fe	Santa Fe	7200	15	05-10	10-12	157	15	13.85	11.19
Sierra	Elephant Butte Dam	4576	30	03-30	11-10	225	30	8.29	10.26
Socorro	Socorro	4585	30	04-23	10-23	182	30	8.63	12.18
Taos	Taos	6967	29	05-22	09-28	126	30	12.23	9.99
Torrance	Estancia 4/	6107	30	05-24	09-29	127	30	11.54	-----
Union	Clayton 2/	4970	30	05-01	10-16	167	30	14.12	14.91
Valencia	Los Lunas 3 SSW	4840	22	05-10	10-15	160	30	8.17	7.68

1/ National Weather Service Forecast Office - International Airport.

2/ National Weather Service Office.

3/ Station is officially known as "State University".

4/ Data not available for 1987.

SOURCE: Office of State Climatologist, New Mexico Department of Agriculture

Fertilizer: 1987 Inshipments

Materials	First Quarter	Second Quarter	Third Quarter	Fourth Quarter	Total 1987
-----Tons-----					
<u>NITROGEN MATERIALS:</u>					
Anhydrous Ammonia	1894	7032	7705	772	17403
Ammonium Nitrate	1156	696	482	916	3250
Ammonium Nitrate-Sulfate	---	---	11	---	11
Ammonium Polysulfide	97	371	456	111	1035
Ammonium Sulfate	1401	1746	1338	705	5190
Ammonium Sulfate-Nitrate	214	263	208	3	688
Ammonium Thiosulfate	437	590	241	182	1450
Calcium Ammonium Nitrate	73	119	252	26	470
Calcium Nitrate	---	96	48	49	193
Nitric Acid	9	133	4	---	146
Nitrogen Solution	2391	9437	10082	1621	23531
Sodium Nitrate	7	---	5	7	19
Sulfur Coated Urea	157	---	---	---	157
Urea	2111	4624	3270	1552	11557
Urea-Formaldehyde	---	24	24	---	48
TOTAL NITROGEN MATERIALS	9947	25131	24126	5944	65148
<u>PHOSPHATE MATERIALS:</u>					
Diammonium Phosphate	2573	944	841	579	4937
Monoammonium Phosphate	3087	2210	1146	1532	7975
Phosphoric Acid	---	198	310	---	508
Liquid Ammonium Polyphosphate	457	963	338	64	1822
Superphosphate, Normal	---	1	---	---	1
Superphosphate, Triple	718	560	142	226	1646
TOTAL PHOSPHATE MATERIALS	6835	4876	2777	2401	16889
<u>POTASH MATERIALS:</u>					
Manure Salts	75	---	25	---	100
Muriate of Potash	1805	854	392	70	3121
Sulfate of Potash-Magnesia	2334	904	714	1467	5419
Potassium Sulfate	638	567	---	---	1205
TOTAL POTASH MATERIALS	4852	2325	1131	1537	9845
MANURE	768	340	182	109	1399
SOIL CONDITIONERS	495	703	278	24	1500
SULFUR	---	52	---	---	52
MIXED FERTILIZERS	7877	4280	2558	1299	16014
MISCELLANEOUS	---	2	1	---	3
TOTAL	30774	37709	31053	11314	110850

SOURCE: Feed, Seed and Fertilizer Bureau, New Mexico Department of Agriculture

Commercial Feed: 1987 Sales (Compiled from Quarterly Tonnage Reports)

KIND OF FEED	FIRST QUARTER		SECOND QUARTER		THIRD QUARTER		FOURTH QUARTER		TOTALS FOR YEAR		GRAND TOTAL FOR YEAR
	(Tons)		(Tons)		(Tons)		(Tons)		(Tons)		(Tons)
	Sacked	Bulk	Sacked	Bulk	Sacked	Bulk	Sacked	Bulk	Sacked	Bulk	
Alfalfa Products	2,031	6,270	1,455	1,277	1,825	878	308	6,419	5,619	14,844	20,463
Animal By-Products	14	1,188	11	1,776	2	1,761	6	1,656	33	6,381	6,414
Barley Products	164	2,988	447	2,701	250	2,952	362	2,226	1,223	10,867	12,090
Cattle Feeds	12,539	25,945	5,874	14,912	2,559	16,311	6,900	16,110	27,872	73,278	101,150
Corn Products	901	13,708	739	9,197	695	8,110	642	10,356	2,977	41,371	44,348
Cottonseed Products	874	7,896	520	5,622	157	3,255	1,330	3,431	2,881	20,204	23,085
Custom Mixed Feeds	1,125	2,519	688	1,971	651	1,269	661	10,903	3,125	16,662	19,787
Dairy Feeds	1,264	4,459	1,325	4,949	682	6,571	548	6,932	3,819	22,911	26,730
Distillers By-Products	9	4,941	2	6,126	444	7,380	4	6,273	459	24,720	25,179
Fish Feeds	125	0	13	0	35	0	7	0	180	0	180
Grain Sorghum Products	745	8,746	1,475	3,997	741	4,387	1,596	6,082	4,557	23,212	27,769
Horse Feeds	2,806	1,021	3,032	1,050	2,677	1,065	2,490	1,048	11,005	4,184	15,189
Mineral Feeds	2,233	985	2,073	964	2,342	1,857	1,970	1,274	8,618	5,080	13,698
Miscellaneous 1/	30	0	24	2	246	538	473	836	773	1,376	2,149
Molasses	85	5,473	110	4,992	2	5,691	13	36,850	210	53,006	53,216
Molasses-Urea Feed	0	2,572	0	392	347	3,156	0	3,444	347	9,564	9,911
Oat Products	852	93	947	233	701	765	357	910	2,857	2,001	4,858
Other Mixed Feeds	9	0	2	218	336	166	53	197	400	581	981
Other Products	0	11	10	12	6	0	44	0	60	23	83
Oyster Shell Products	0	0	0	1	0	1	1	0	1	2	3
Peanut Meal/Ground Hulls	0	126	0	53	0	244	133	0	133	423	556
Pet Foods 2/	5,257	228	4,996	380	5,112	752	4,108	685	19,473	2,045	21,518
Poultry Feeds	1,893	981	2,106	1,087	2,585	303	1,946	1,025	8,530	3,396	11,926
Rabbit Feeds	498	0	520	74	537	11	441	10	1,996	95	2,091
Rice Mill By-Products	0	1,124	0	1,573	0	2,111	0	1,230	0	6,038	6,038
Sheep Feeds	191	59	313	1	206	1	162	0	872	61	933
Soft Rock Phosphate	147	615	93	740	63	662	55	769	358	2,786	3,144
Soybean Products	68	787	19	537	30	981	44	664	161	2,969	3,130
Swine Feeds	755	93	852	138	970	165	770	82	3,347	478	3,825
Turkey Feeds	5	0	21	0	19	0	6	0	51	0	51
Urea Feed Products	0	361	0	23	0	74	0	102	0	560	560
Wheat Products	703	1,688	382	1,591	647	646	759	282	2,491	4,207	6,698
TOTAL TONNAGE	35,323	94,877	28,049	66,589	24,867	72,063	26,189	119,796	114,428	353,325	467,753
TOTAL - SACKED & BULK	130,200		94,638		96,930		145,985		467,753		

1/ Miscellaneous tonnage includes products unidentified on quarterly reports submitted by manufacturers.

2/ Tonnage of pet food does not include total amount merchandised in packages of ten pounds or less.

Source: Feed, Seed, and Fertilizer Bureau, New Mexico Department of Agriculture

Prices and Income

ASSETS AND DEBTS - New Mexico farm and ranch assets totaled \$7,045.4 million for the year ending December 31, 1986. This level represents a 7.6 percent decline from assets one year earlier, and a 22.3 percent drop from assets in 1984. Real estate accounted for 77.2 percent of all assets, as compared to 79.1 percent a year earlier. Farm and ranch debt in New Mexico totaled \$1,243.9 million during the year ending December 31, 1986, 7.5 percent lower than debt in 1986, and 10.3 percent lower than two years earlier. Real estate debt accounted for 55.8 percent of total debt, compared to 54.5 percent one year earlier.

CASH RECEIPTS - The 1987 cash receipts from farm marketings in New Mexico totaled 1,156 million dollars, up 13 percent from cash receipts in 1986. Livestock and livestock products accounted for 70.7 percent of the total and were valued at 816.7 million dollars. Crops, valued at 338.9 million dollars, represented 29.3 percent of cash receipts. Cattle and calves continued to dominate all other commodities, accounting for 55 percent of all cash receipts. Wholesale milk was second with 11 percent, while hay remained third with 5.9 percent of the total. The greenhouse and nursery industry ranked fourth, accounting for 3.4 percent of total cash receipts, while chile ranked fifth at 3.3 percent of the total. These five commodity groups accounted for 78 percent of all cash receipts generated by agriculture.

FARM INCOME CONCEPTS - Cash receipts from farm marketings represent gross income from the sales of crops, livestock and poultry during the calendar year. The value of home consumption of farm products, inter-farm sales of livestock, and crops fed on farms where grown are not included in cash receipts. Production expenses such as feed, fuel, and fertilizer, and marketing costs are not subtracted from gross cash receipts. County estimates of cash receipts reflect farm productivity of the county to which the income is assigned. Cash receipts from marketings of crops is the final product of several estimates: acreage, yield, percentage of total production sold, average price, and changes in inventories. Marketings of livestock and poultry include the sales value of an animal only once, usually at the time when the animal is sold for slaughter or at final disposition.

Gross farm income includes four principal components: cash receipts from farm marketings, government payments, other farm income, and non-money income. Cash receipts represent gross receipts from commercial market sales as well as loans made or guaranteed by the CCC and other purchases under price support programs. Government payments to farmers are those payments made directly to farm producers in connection with farm programs. Other farm income is cash income from such sources as recreation, machine hire, and custom work. Non-money income includes the rental value of housing provided by farm dwellings and the value of farm products consumed directly in farm households.

Farm production expenses include current farm operating expenses for such items as wages paid to hired farm workers, outlays for repairs of farm equipment and operation of the farm, as well as purchases of oil, feed, and livestock.

Overhead-type costs include charges for depreciation and other capital consumption, taxes on farm property, and interest.

Net change in farm inventories is the estimated physical change in livestock and crops owned by farmers, valued at average prices prevailing during the year.

Balance Sheet of the Farming Sector 1/

13

Item	1984	1985	1986 2/
		<u>Number</u>	
Farms	14,000	13,800	13,600
		<u>Million Dollars</u>	
ASSETS			
Total Farm Assets	9,071.7	7,624.2	7,045.4
Real Estate	7,465.4	6,030.0	5,441.2
Livestock and Poultry	529.2	525.0	521.9
Machinery and Motor Vehicles	481.5	438.8	405.8
Household Equip. and Furnishings	64.7	73.1	69.1
Crops 3/	217.6	209.6	223.0
Deposits and Currency	133.5	144.0	171.8
U.S. Savings Bonds	9.5	10.3	12.1
Investments in Cooperatives	170.3	193.4	200.5
CLAIMS			
Total Farm Debt	1,387.4	1,345.3	1,243.9
Real Estate Debt	785.2	732.8	693.8
Nonreal Estate Debt 4/	571.2	541.5	494.1
CCC Loans 5/	31.0	71.0	56.0
Equity	7,684.3	6,278.9	5,801.5
		<u>Ratios</u>	
RATIOS			
Equity/Assets	84.7	82.4	82.3
Debt/Equity	18.1	21.4	21.4
Debt/Assets, Total	15.3	17.6	17.7
Debt/Assets, Real Estate	10.5	12.2	12.8
Debt/Assets, Nonreal Estate and CCC	37.5	38.4	34.3

1/ Data as of December 31, 1984-86. Data are for farms with sales of \$1,000 or more annually and include farm households. Details may not add to totals due to rounding.

2/ Preliminary.

3/ All crops held on farms including crops under CCC and crops held off farms by farm operators.

4/ Includes debt owed to institutional lenders and to noninstitutional or miscellaneous lenders.

5/ Nonrecourse CCC loans secured by crops owned by farmers. These crops are included as assets.

SOURCE: USDA, Economic Research Service Publication, ECIFS 6-4, February 1988.

Net Income from Farming ^{1/}

Year	Realized Gross Farm Income				Total	Farm Production Expenses	Net Farm	Net	Net Farm
	Cash Receipts From Farm Marketings	Government Payments	Non- Money Income	Other Farm Income 2/			Income Before Inventory Adjust- ment 3/	Change In Farm Inventories	Income After Inventory Adjust- ment 3/
-----Million Dollars-----									
1956	199.4	5.7	14.5	.4	220.0	147.1	72.9	-23.1	49.7
1957	191.9	15.0	13.0	.6	220.4	152.3	68.1	-.3	67.8
1958	229.3	13.3	13.8	1.0	257.4	184.1	73.3	23.1	96.4
1959	259.2	14.9	12.6	1.2	287.8	195.5	92.3	-6.4	85.9
1960	231.9	11.2	12.8	1.2	257.2	187.7	69.4	.3	69.7
1961	244.6	14.1	14.8	1.2	274.7	208.9	65.8	18.0	83.9
1962	275.2	15.0	15.7	1.3	307.2	225.5	81.6	-7.6	74.0
1963	279.1	15.5	17.2	1.5	313.4	248.3	65.1	6.1	71.2
1964	237.2	18.7	17.6	1.9	275.4	220.8	54.5	-8.0	46.6
1965	262.2	22.3	18.3	2.3	305.1	256.4	48.7	7.7	56.4
1966	313.0	37.5	20.3	2.6	373.4	294.8	78.6	6.2	84.8
1967	336.2	33.3	21.5	3.1	394.1	331.4	62.6	8.5	71.1
1968	344.8	36.0	22.2	3.5	406.4	333.9	72.5	10.5	83.0
1969	397.4	41.6	28.7	3.9	471.6	386.8	84.8	6.4	91.2
1970	452.7	43.1	26.2	3.8	525.8	407.8	118.0	-3.0	115.0
1971	478.3	34.1	29.6	4.2	546.1	425.8	120.3	-3.2	117.1
1972	587.8	42.5	31.1	4.2	665.6	546.9	118.7	13.5	132.2
1973	843.6	29.4	35.5	4.9	913.5	709.1	204.3	-6.6	197.7
1974	588.0	13.3	47.5	5.9	654.8	549.1	105.7	34.3	140.0
1975 ^{4/}	726.2	11.3	49.6	7.8	795.0	596.2	198.8	-19.2	179.6
1976	698.3	15.5	53.0	9.0	775.8	643.9	131.9	-30.2	101.7
1977	791.8	15.1	62.7	12.1	881.7	771.9	109.8	19.0	128.8
1978	968.8	29.2	71.1	13.8	1082.9	889.4	193.5	-8.1	185.4
1979	1125.7	21.3	81.6	10.6	1239.2	1087.1	152.1	62.0	214.1
1980	1194.3	20.9	105.3	11.2	1331.7	1054.1	277.6	-115.7	161.9
1981	902.1	26.0	113.2	12.5	1053.8	986.1	67.7	41.6	109.3
1982	949.5	31.9	114.5	14.1	1110.0	988.9	121.1	-25.2	95.9
1983	970.0	57.5	101.8	13.8	1143.1	1037.2	105.9	-27.5	78.4
1984	994.5	49.2	105.5	16.6	1165.8	1062.4	103.4	26.2	129.6
1985	1090.8	44.6	99.5	22.0	1256.9	1036.9	220.0	-11.1	208.9
1986	1020.6	62.4	81.6	20.6	1185.2	945.0	240.2	-20.4	219.8

1/ Details may not add to totals due to rounding.

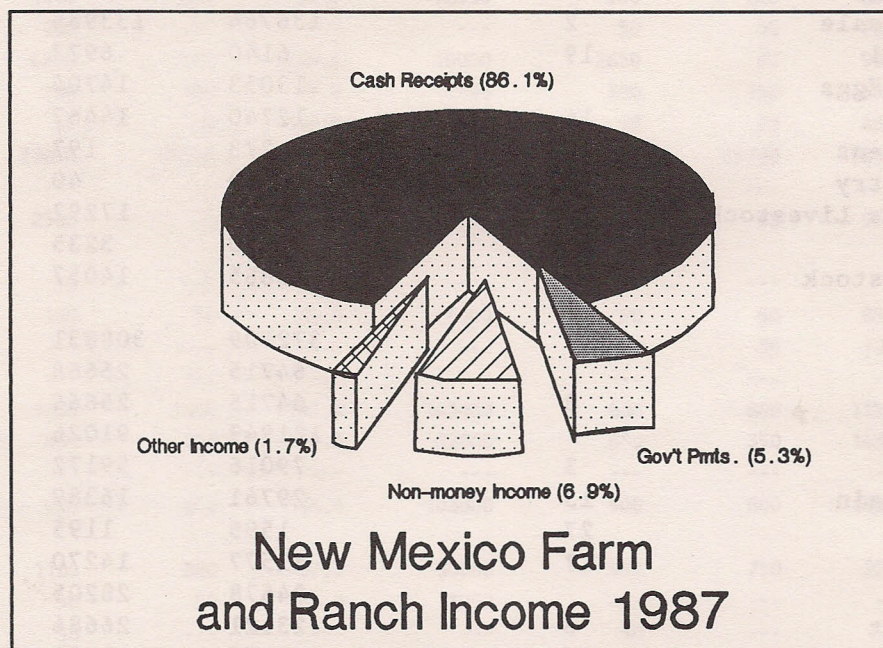
2/ Beginning with 1978, other farm income includes forest product sales and cash receipts from farm marketings excludes forest product sales.

3/ For farm operators only.

4/ Beginning with 1975, based on the 1974 Census of Agriculture definition of a farm, which is a farm with sales of \$1,000 or more.

SOURCE: USDA, Economic Research Service Publication, ECIFS 6-4, February 1988.

New Mexico Farm and Ranch Income, 1987



INCOME - Gross income on New Mexico farms and ranches for 1986 was \$1.19 billion, a decrease of 6 percent from 1985 and 12 percent below the 1980 record of \$1.32 billion. Cash receipts from farm and ranch marketings were \$1020.6 million, down 6 percent from 1985. The other items contributing to gross income were: government payments at \$62.4 million, non-money income at \$81.6 million, and other farm income at \$22.0 million. Cash receipts from marketings represented 86 percent of total gross farm income for 1986. Net farm income before inventory adjustment, the difference between gross income and production expenses, at \$240.2 million, was up 9 percent from 1985. Total net farm income, which is income after adjustment for inventory change, at \$219.8 million, was up 5 percent from 1985.

PRODUCTION EXPENSES - Farms and ranches in New Mexico had \$.945 billion in expenses for producing their crops and livestock in 1986, a decrease of 9 percent from 1985. This was the second year since 1980 that cash receipts from farm marketings exceeded production expenses.

Cash Receipts, All Commodities 1/

Commodity	1987 Rank	1985	1986 2/	1987 3/
-----1000 Dollars-----				
ALL COMMODITIES		1090811	1020628	1155600
LIVESTOCK PRODUCTS		717902	711797	816741
Meat Animals		544610	538839	656349
Cattle and Calves	1	525787	515374	635939
Sheep and Lambs	10	13341	16772	14650
Hogs and Pigs	21	5482	6693	5760
Dairy Products		142904	140962	127292
Milk Wholesale	2	136764	133985	119380
Milk Retail	19	6140	6977	7912
Poultry and Eggs		13053	14704	14112
Eggs	14	12740	14467	13842
Farm Chickens	28	273	197	230
Other Poultry	29	40	40	40
Miscellaneous Livestock		17335	17292	18988
Wool	23	3470	3235	4900
Other Livestock	12	13865	14057	14088
CROPS		372909	308831	338859
Food Grains		64715	25666	24362
Wheat	8	64715	25666	24362
Feed Crops		131949	91026	92582
Hay	3	79016	59172	67824
Sorghum Grain	13	29761	16389	13947
Barley	27	1595	1195	991
Corn	17	21577	14270	9820
Cotton		24678	28205	34261
Cotton Lint	6	23121	26684	33182
Cottonseed	26	1557	1521	1079
Peanuts	16	9374	10476	10379
Vegetables		76807	88524	105611
Onions	7	18873	17245	30748
Lettuce	18	5773	10082	8770
Potatoes	11	11800	13950	14525
Chile	5	33638	37269	38679
Miscellaneous Vegetables	15	6723	9978	12889
Fruit and Nuts		27786	27134	19802
Pecans	9	25520	24570	16250
Apples	24	1139	1140	1953
Other Fruit and Nuts	25	1127	1424	1599
All Other Crops		37600	37800	51862
Greenhouse Nursery	4	27000	27000	39800
Forest Products	22	5000	5000	5000
Other Field Crops	20	5600	5800	7062

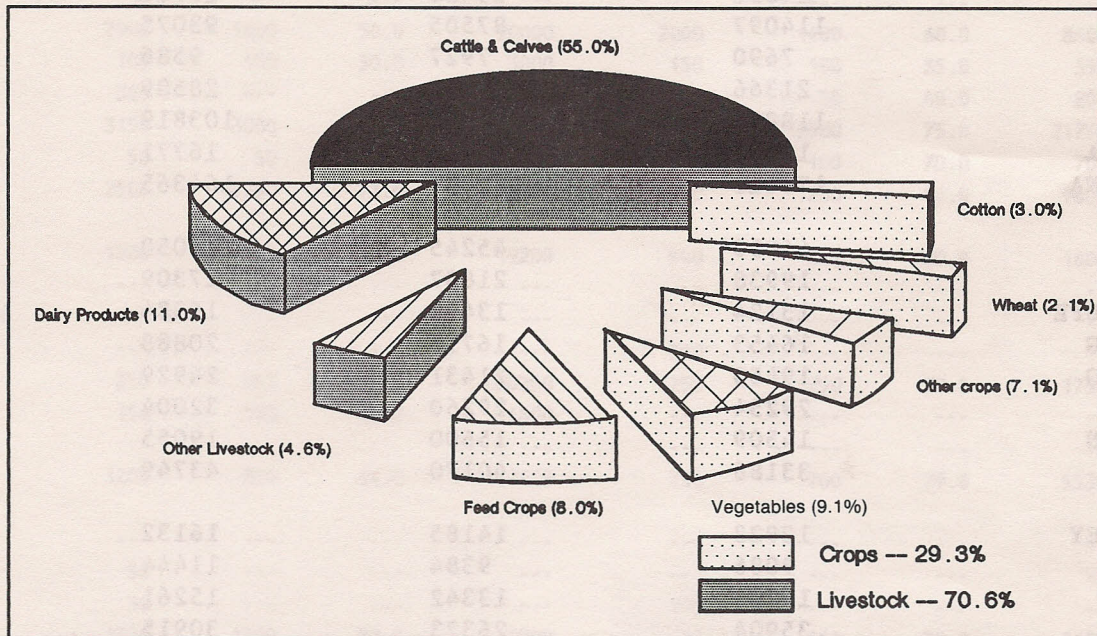
1/ Does not include cash receipts received for livestock grazing.

2/ Revised.

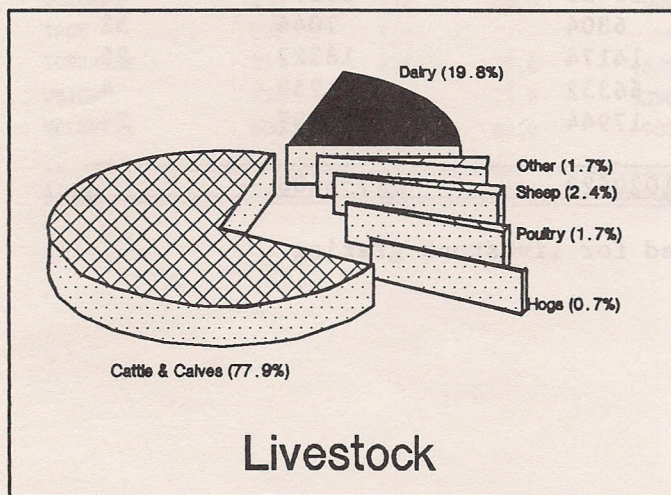
3/ Preliminary.

SOURCE: USDA-ERS, Economic Indicators of the Farm Sector.

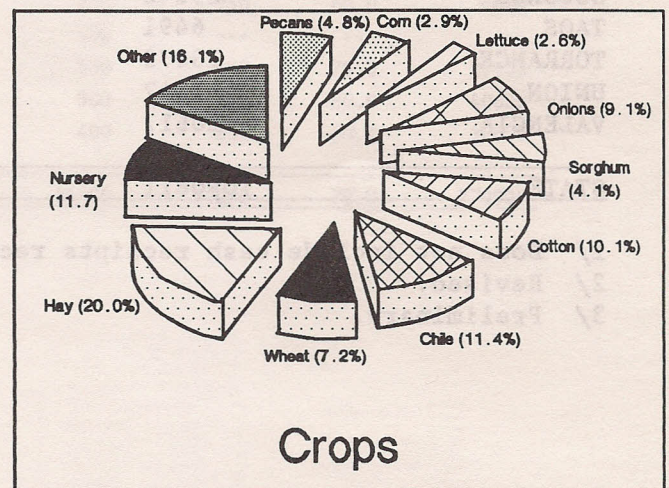
New Mexico Cash Receipts, 1987



All Commodities



Livestock



Crops

Cash Receipts: All Farm Commodities 1/

COUNTY	ALL FARM COMMODITIES-----			1987
	1985	1986 2/	1987 3/	Rank in State
-----1,000 DOLLARS-----				
BERNALILLO	28938	36423	41396	9
CATRON	14852	15420	18763	23
CHAVES	114097	87505	93075	3
CIBOLA	7690	7927	9586	31
COLFAX	21366	22342	28589	13
CURRY	118851	88052	103819	2
DE BACA	13664	13966	16771	26
DONA ANA	170613	162047	164365	1
EDDY	44850	45245	52050	6
GRANT	19938	21807	27309	15
GUADALUPE	13124	13412	16384	27
HARDING	16453	16710	20888	18
HIDALGO	19455	21431	24929	16
LEA	29254	29260	32004	10
LINCOLN	14509	15600	19055	21
LUNA	33186	40170	43749	8
MCKINLEY	12923	14185	16132	28
MORA	9086	9384	11444	30
OTERO	13306	13342	15261	29
QUAY	35904	26323	30915	11
RIO ARRIBA	15342	16000	19635	20
ROOSEVELT	75695	65143	68922	5
SAN JUAN	38850	38704	47823	7
SAN MIGUEL	18890	19552	24681	17
SANDOVAL	14194	13071	15040	30
SANTA FE	16367	15480	20043	19
SIERRA	21646	21938	27709	14
SOCORRO	25640	25435	29875	12
TAOS	6491	6304	7046	32
TORRANCE	13673	14174	18327	25
UNION	71347	66332	71258	4
VALENCIA	20617	17944	18757	24
STATE	1090811	1020628	1155600	

1/ Does not include cash receipts received for livestock grazing.

2/ Revised.

3/ Preliminary.

Cash Receipts: All Livestock, All Crops 1/

COUNTY	-----All Livestock-----			-----All Crops-----		
	1985	1986 2/	1987 3/	1985	1986 2/	1987 3/
-----1000 Dollars-----						
BERNALILLO	22504	23161	23431	6434	13262	17965
CATRON	13594	14166	17490	1258	1254	1273
CHAVES	87292	64669	65777	26805	22836	27298
CIBOLA	7009	7384	8866	681	543	720
COLFAX	19353	20750	26893	2013	1592	1696
CURRY	61439	57361	73608	57412	30691	30211
DE BACA	11798	12435	15092	1866	1531	1679
DONA ANA	79610	82906	80445	91003	79141	83920
EDDY	29538	30760	35534	15312	14485	16516
GRANT	18724	19630	24590	1214	2177	2719
GUADALUPE	12471	13045	15921	653	367	463
HARDING	15441	16141	20520	1012	569	368
HIDALGO	15462	17104	21183	3993	4327	3746
LEA	21246	22412	23638	8008	6848	8366
LINCOLN	13846	14959	18335	663	641	720
LUNA	15892	17918	20877	17294	22252	22872
MCKINLEY	12597	13738	15731	326	447	401
MORA	7981	8510	10505	1105	874	939
OTERO	10237	10761	12770	3069	2581	2491
QUAY	21126	19886	24717	14778	6437	6198
RIO ARRIBA	11885	12501	15382	3457	3499	4253
ROOSEVELT	32234	32512	35276	43461	32631	33646
SAN JUAN	17617	19743	23491	21233	18961	24332
SAN MIGUEL	17435	17898	22675	1455	1654	2006
SANDOVAL	9555	9920	11382	4639	3151	3658
SANTA FE	11115	10676	14625	5252	4804	5418
SIERRA	14695	14987	19590	6951	6951	8119
SOCORRO	19539	20470	24572	6101	4965	5303
TAOS	3473	3734	4328	3018	2570	2718
TORRANCE	8179	8342	10606	5494	5832	7721
UNION	60288	59478	65281	11059	6854	5977
VALENCIA	14727	13840	13610	5890	4104	5147
STATE	717902	711797	816741	372909	308831	338859

1/ Does not include cash receipts for livestock grazing.

2/ Revised.

3/ Preliminary.

Cash Receipts: Cattle and Calves, Milk 1/

COUNTY	---Cattle and Calves---			-----Milk-----		
	1985	1986 2/	1987 3/	1985	1986 2/	1987 3/
-----1000 Dollars-----						
BERNALILLO	7585	7756	9238	9877	10168	9277
CATRON	13274	13826	17157	105	116	108
CHAVES	53811	33795	36372	27740	24264	22654
CIBOLA	6005	6407	7919	105	116	108
COLFAX	18964	20233	26395	105	231	216
CURRY	57324	54307	70708	3362	2311	2157
DE BACA	10904	11466	14077	210	231	216
DONA ANA	15803	15512	19357	54640	56385	50485
EDDY	27845	29106	33856	420	231	216
GRANT	18331	19222	24196	105	116	108
GUADALUPE	11062	11466	14517	105	116	108
HARDING	15171	15850	20236	105	116	108
HIDALGO	13907	15175	19357	105	116	108
LEA	16435	17198	18741	3995	4391	4099
LINCOLN	11062	11466	14957	105	231	216
LUNA	13907	15778	18917	630	462	431
MCKINLEY	8218	8768	10998	105	116	108
MORA	7585	8093	10118	105	116	108
OTERO	8218	8431	10558	105	231	216
QUAY	20156	18885	23756	420	462	431
RIO ARRIBA	10746	11128	14077	105	231	216
ROOSEVELT	15487	15850	20236	15763	15714	14454
SAN JUAN	12762	13895	18036	1891	2080	1726
SAN MIGUEL	16751	17198	21996	105	116	108
SANDOVAL	5689	5733	7479	3362	3697	3452
SANTA FE	10503	10046	13908	210	231	324
SIERRA	10430	10791	15872	3993	3928	3452
SOCORRO	14539	14602	20166	4623	5542	4099
TAOS	2845	3035	3519	210	231	216
TORRANCE	7269	7419	9678	105	116	108
UNION	58774	58553	64263	841	231	324
VALENCIA	4425	4384	5279	9247	8319	7335
STATE	525787	515374	635939	142904	140962	127292

1/ Does not include cash receipts received for livestock grazing.

2/ Revised.

3/ Preliminary.

Cash Receipts: Sheep and Poultry 1/

COUNTY	-----Sheep 2/-----			-----Poultry-----		
	1985	1986 3/	1987 4/	1985	1986 3/	1987 4/
-----1000 Dollars-----						
BERNALILLO	63	63	43	3996	4161	3867
CATRON	3	6	7	4	3	2
CHAVES	4649	5502	5722	44	29	24
CIBOLA	500	459	433	9	6	5
COLFAX	31	29	26	22	15	13
CURRY	94	63	65	26	18	15
DE BACA	406	459	520	9	6	5
DONA ANA	50	96	87	7995	9769	9649
EDDY	688	855	889	89	64	68
GRANT	6	8	4	18	12	9
GUADALUPE	1094	1250	1084	13	9	7
HARDING	25	35	37	9	6	5
HIDALGO	3	4	4	9	6	5
LEA	300	321	303	53	36	28
LINCOLN	2344	2918	2818	4	3	2
LUNA	3	8	9	9	6	5
MCKINLEY	2813	3335	3104	9	6	5
MORA	47	63	43	13	9	7
OTERO	484	500	477	22	15	13
QUAY	94	63	65	18	12	9
RIO ARRIBA	250	354	303	44	26	22
ROOSEVELT	156	125	108	408	337	85
SAN JUAN	1406	2209	2170	35	21	18
SAN MIGUEL	47	54	43	35	21	18
SANDOVAL	234	208	173	13	9	7
SANTA FE	31	17	13	18	12	9
SIERRA	6	4	4	13	9	7
SOCORRO	156	104	87	18	12	9
TAOS	203	250	238	22	15	152
TORRANCE	422	417	433	18	12	9
UNION	47	63	65	31	21	18
VALENCIA	156	165	173	27	18	15
STATE	16811	20007	19550	13053	14704	14112

1/ Does not include cash receipts received for livestock grazing.

2/ Includes wool.

3/ Revised.

4/ Preliminary.

Cash Receipts: Hogs and Other Livestock ^{1/}

COUNTY	-----Hogs-----			-----Other Livestock-----		
	1985	1986 2/	1987 3/	1985	1986 2/	1987 3/
-----1000 Dollars-----						
BERNALILLO	58	74	65	925	939	941
CATRON	14	19	19	194	196	197
CHAVES	259	279	204	789	800	801
CIBOLA	14	15	19	376	381	382
COLFAX	29	37	37	202	205	206
CURRY	72	93	93	561	569	570
DE BACA	14	15	15	255	258	259
DONA ANA	360	372	93	762	772	774
EDDY	29	28	28	467	476	477
GRANT	14	19	19	250	253	254
GUADALUPE	14	19	19	183	185	186
HARDING	14	15	15	117	119	119
HIDALGO	1310	1673	1579	128	130	130
LEA	29	26	26	434	440	441
LINCOLN	14	19	19	317	322	323
LUNA	1224	1543	1394	119	121	121
MCKINLEY	43	84	84	1409	1429	1432
MORA	14	9	9	217	220	220
OTERO	763	930	850	645	654	656
QUAY	72	93	84	366	371	372
RIO ARRIBA	43	56	56	697	706	708
ROOSEVELT	216	279	186	204	207	207
SAN JUAN	43	37	37	1480	1501	1504
SAN MIGUEL	14	19	19	483	490	491
SANDOVAL	43	56	56	214	217	215
SANTA FE	43	56	56	310	314	315
SIERRA	29	28	28	224	227	227
SOCORRO	14	19	19	189	191	192
TAOS	29	37	37	164	166	166
TORRANCE	29	37	37	336	341	341
UNION	360	372	372	235	238	239
VALENCIA	259	335	186	613	621	622
STATE	5482	6693	5760	13865	14057	14088

1/ Does not include cash receipts received for livestock grazing.

2/ Revised.

3/ Preliminary.

Cash Receipts: Wheat and Hay

COUNTY	-----Wheat-----			-----Hay-----		
	1985	1986 1/	1987 2/	1985	1986 1/	1987 2/
-----1000 Dollars-----						
BERNALILLO	9	---	7	1084	906	1075
CATRON	---	---	---	44	36	23
CHAVES	624	254	212	17168	13073	16068
CIBOLA	107	29	25	330	247	283
COLFAX	130	95	86	1717	1391	1507
CURRY	29626	11821	11274	2207	1678	1699
DE BACA	196	164	224	1524	1095	1138
DONA ANA	444	350	345	7027	5469	5120
EDDY	103	17	15	10653	8008	9654
GRANT	22	---	---	204	157	162
GUADALUPE	223	37	57	292	202	169
HARDING	525	204	128	231	157	202
HIDALGO	164	76	42	303	146	196
LEA	1602	894	863	2575	2070	2121
LINCOLN	---	---	---	253	166	205
LUNA	166	213	116	539	520	530
MCKINLEY	2	---	3	132	148	126
MORA	---	---	---	1013	763	825
OTERO	45	---	17	1381	651	605
QUAY	8342	1948	2582	2096	1489	1366
RIO ARRIBA	111	65	34	1178	929	1350
ROOSEVELT	14514	5783	5373	1843	1270	1535
SAN JUAN	2868	856	723	7439	6088	7526
SAN MIGUEL	9	28	27	957	1000	1300
SANDOVAL	3	5	1	1029	731	860
SANTA FE	337	140	72	1370	879	931
SIERRA	25	33	37	880	668	630
SOCORRO	28	27	28	3637	2808	3311
TAOS	32	---	36	1832	1512	1636
TORRANCE	511	186	194	2691	1400	1710
UNION	3912	2409	1830	1634	1193	1366
VALENCIA	35	32	11	3753	2322	2595
STATE	64715	25666	24362	79016	59172	67824

1/ Revised.

2/ Preliminary.

Cash Receipts: Sorghum and Corn

COUNTY	-----Sorghum-----			-----Corn-----		
	1985	1986 1/	1987 2/	1985	1986 1/	1987 2/
-----1000 Dollars-----						
BERNALILLO	---	---	---	110	91	15
CATRON	---	---	---	---	---	5
CHAVES	527	301	218	24	17	6
CIBOLA	---	---	---	17	13	7
COLFAX	---	---	4	9	8	4
CURRY	11503	5591	5315	8319	6276	3654
DE BACA	74	24	31	---	---	---
DONA ANA	231	190	55	13	---	6
EDDY	105	81	49	---	---	---
GRANT	---	---	---	18	7	5
GUADALUPE	---	---	91	9	---	5
HARDING	200	87	---	20	---	---
HIDALGO	539	273	159	296	251	119
LEA	840	276	201	262	90	65
LINCOLN	---	---	---	---	---	---
LUNA	1212	570	655	377	188	148
MCKINLEY	---	---	---	6	52	21
MORA	---	---	10	---	6	---
OTERO	---	---	---	---	---	---
QUAY	3466	2102	1220	209	197	118
RIO ARRIBA	---	---	---	7	---	3
ROOSEVELT	9548	6104	5364	3043	2182	1629
SAN JUAN	---	---	---	3747	2158	1646
SAN MIGUEL	---	---	8	15	16	18
SANDOVAL	---	---	---	5	---	31
SANTA FE	---	---	---	257	387	109
SIERRA	---	---	---	14	---	---
SOCORRO	22	6	7	835	497	268
TAOS	---	---	---	---	---	---
TORRANCE	---	---	---	509	92	91
UNION	1494	784	560	3408	1728	1818
VALENCIA	---	---	---	48	14	29
STATE	29761	16389	13947	21577	14270	9820

1/ Revised.

2/ Preliminary.

Cash Receipts: Barley and Cotton

COUNTY	-----Barley-----			-----Cotton-----		
	1985	1986 1/	1987 2/	1985	1986 1/	1987 2/
-----1000 Dollars-----						
BERNALILLO	---	---	---	---	---	---
CATRON	---	---	---	---	---	---
CHAVES	173	103	108	3518	3947	6530
CIBOLA	---	3	5	---	---	---
COLFAX	4	---	3	---	---	---
CURRY	515	207	280	408	538	789
DE BACA	---	3	9	---	---	---
DONA ANA	246	192	124	9402	9755	10149
EDDY	24	22	23	2790	4012	4634
GRANT	---	---	---	---	---	---
GUADALUPE	---	---	---	---	---	---
HARDING	---	---	---	---	---	---
HIDALGO	128	23	23	1870	2255	1849
LEA	---	5	---	1000	1304	2215
LINCOLN	---	---	---	---	---	---
LUNA	155	77	71	4459	4737	4199
MCKINLEY	---	---	---	---	---	---
MORA	---	---	---	---	---	---
OTERO	---	---	---	108	144	223
QUAY	106	45	21	229	144	271
RIO ARRIBA	8	7	10	---	---	---
ROOSEVELT	7	5	5	834	1346	3346
SAN JUAN	---	396	167	---	---	---
SAN MIGUEL	5	---	5	---	---	---
SANDOVAL	---	---	---	---	---	---
SANTA FE	4	---	8	---	---	---
SIERRA	5	3	3	60	23	56
SOCORRO	10	10	12	---	---	---
TAOS	23	---	---	---	---	---
TORRANCE	6	22	48	---	---	---
UNION	158	62	51	---	---	---
VALENCIA	18	10	15	---	---	---
STATE	1595	1195	991	24678	28205	34261

1/ Revised.

2/ Preliminary.

Cash Receipts: Chile and Vegetables

COUNTY	-----Chile-----			-----Vegetables-----		
	1985	1986 1/	1987 2/	1985	1986 1/	1987 2/
-----1000 Dollars-----						
BERNALILLO	1220	1180	986	367	563	496
CATRON	---	---	16	---	---	10
CHAVES	1307	1653	1643	73	291	95
CIBOLA	35	8	33	6	9	133
COLFAX	---	---	---	61	---	---
CURRY	---	---	214	3982	3932	6070
DE BACA	---	---	---	12	28	29
DONA ANA	14467	15680	16099	21407	21615	27966
EDDY	645	928	1060	122	188	210
GRANT	174	68	---	31	47	48
GUADALUPE	87	68	82	31	47	48
HARDING	---	---	---	---	---	---
HIDALGO	418	793	953	177	235	62
LEA	---	---	---	12	293	630
LINCOLN	---	---	---	18	28	29
LUNA	7669	9612	9692	1710	4678	6188
MCKINLEY	---	---	---	31	66	118
MORA	---	---	---	24	8	---
OTERO	17	17	33	32	47	62
QUAY	17	17	8	61	195	---
RIO ARRIBA	436	405	452	654	1014	1077
ROOSEVELT	35	17	164	5462	5447	6080
SAN JUAN	35	34	49	4295	6887	10951
SAN MIGUEL	87	84	82	122	188	191
SANDOVAL	959	928	904	403	620	629
SANTA FE	192	127	131	672	1132	1068
SIERRA	4706	4553	4928	855	953	1771
SOCORRO	871	843	821	122	188	191
TAOS	---	---	---	728	658	679
TORRANCE	---	---	---	1261	1357	1596
UNION	---	---	---	112	241	19
VALENCIA	261	254	329	326	300	486
STATE	33638	37269	38679	43169	51255	66932

1/ Revised.

2/ Preliminary.

Cash Receipts: Fruits and Nuts, Other Crops

COUNTY	-----Fruits & Nuts-----			-----Other Crops-----		
	1985	1986 1/	1987 2/	1985	1986 1/	1987 2/
-----1000 Dollars-----						
BERNALILLO	106	115	116	3538	10407	15270
CATRON	---	---	2	1214	1218	1217
CHAVES	3146	2700	1946	245	497	472
CIBOLA	4	4	10	182	230	224
COLFAX	4	6	2	88	92	90
CURRY	1	31	20	851	617	896
DE BACA	11	33	15	49	184	233
DONA ANA	20668	17515	11744	17098	8375	12312
EDDY	667	1011	665	203	218	206
GRANT	282	217	252	483	1681	2252
GUADALUPE	6	8	2	5	5	9
HARDING	---	3	2	36	118	36
HIDALGO	39	77	52	59	198	291
LEA	203	986	654	1514	930	1617
LINCOLN	172	219	247	220	228	239
LUNA	889	1583	1200	118	74	73
MCKINLEY	---	---	---	155	181	133
MORA	4	5	---	64	92	104
OTERO	575	1345	1140	911	377	411
QUAY	6	12	6	246	288	606
RIO ARRIBA	266	277	523	797	802	804
ROOSEVELT	13	56	40	8162	10421	10110
SAN JUAN	95	101	120	2754	2441	3150
SAN MIGUEL	7	10	4	253	328	371
SANDOVAL	101	104	211	2139	763	1022
SANTA FE	110	37	143	2310	2102	2956
SIERRA	181	491	471	225	227	223
SOCORRO	142	90	92	434	496	573
TAOS	15	18	4	388	382	363
TORRANCE	6	10	29	510	2765	4053
UNION	---	---	---	341	437	333
VALENCIA	67	70	90	1382	1102	1592
STATE	27786	27134	19802	46974	48276	62241

1/ Revised

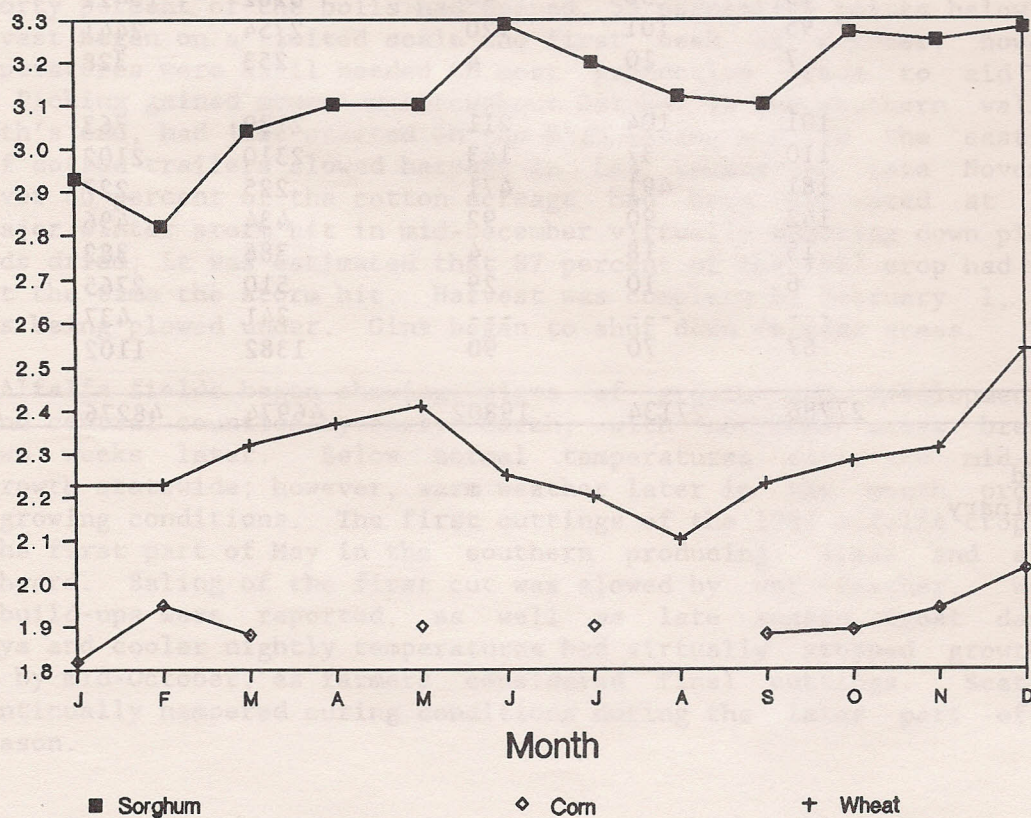
2/ Preliminary.

Prices Received for Field Crops

YEAR AND MONTH	GRAIN	ALL	CORN	BARLEY	ALL	ALFALFA	OTHER
	SORGHUM	WHEAT			HAY		HAY
	\$/cwt.	\$/bu.	\$/bu.	\$/bu.	\$/ton	\$/ton	\$/ton
1987 JANUARY	2.93	2.23	1.82	1.70	78.00	80.00	55.00
FEBRUARY	2.82	2.23	1.95	1/	87.00	90.00	62.00
MARCH	3.04	2.32	1.88	1/	85.00	86.00	72.00
APRIL	3.10	2.37	1/	1/	84.00	85.00	75.00
MAY	3.10	2.41	1.90	1/	88.00	89.00	77.00
JUNE	3.29	2.25	1/	1.57	87.00	88.00	75.00
JULY	3.20	2.20	1.90	1.61	85.00	86.00	75.00
AUGUST	3.12	2.10	1/	1/	84.00	85.00	70.00
SEPTEMBER	3.10	2.23	1.88	1/	83.00	84.00	69.00
OCTOBER	3.27	2.28	1.89	1.92	90.00	91.00	76.00
NOVEMBER	3.25	2.31	1.94	1/	92.00	94.00	76.00
DECEMBER	3.28	2.54	2.03	1/	97.00	99.00	76.00
1987	3.20	2.25	2.00	1.70	89.00	---	---
1986	3.04	2.25	1.85	2.05	74.50	---	---
1985	4.18	2.90	2.67	2.24	80.00	---	---
1984	4.68	3.36	2.97	2.78	99.00	---	---
1983	5.36	3.48	3.36	2.80	90.00	---	---

1/ Insufficient sales to establish a price.

Grain Prices Received, 1987

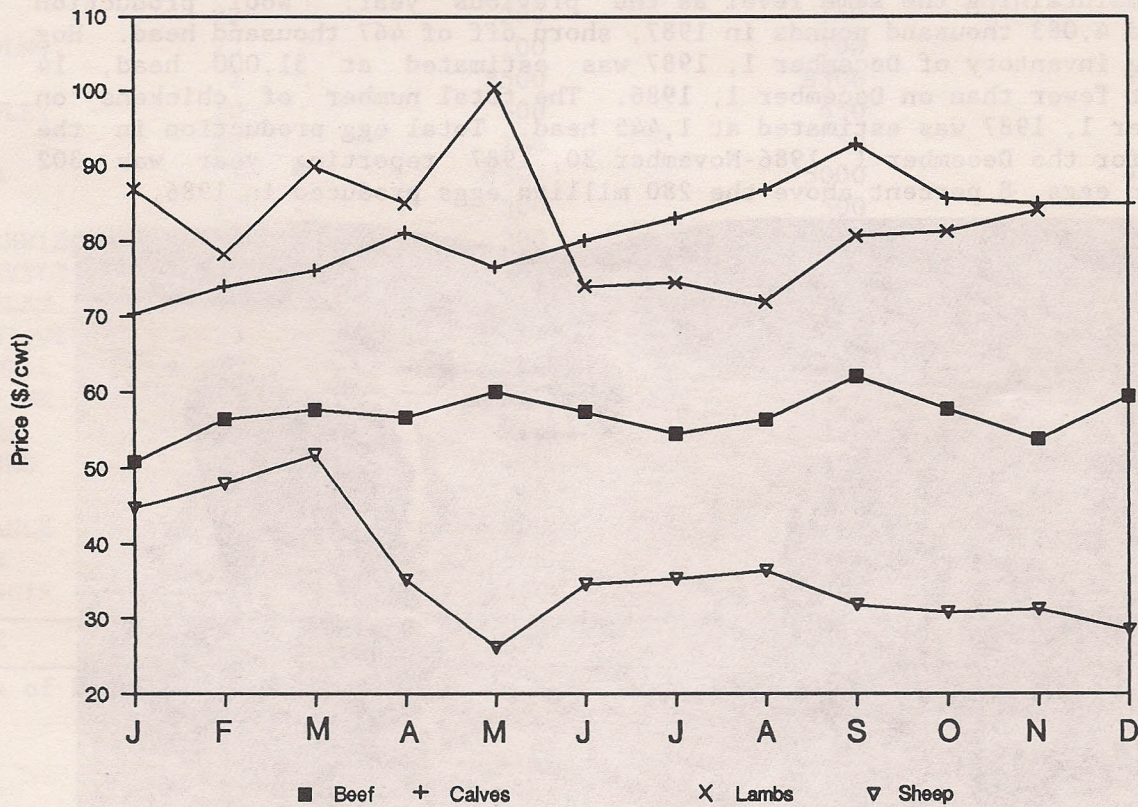


Prices Received for Livestock

YEAR AND MONTH	BEEF CATTLE \$/cwt.	CALVES \$/cwt.	COWS \$/cwt.	STEERS & HEIFERS \$/cwt.	LAMBS \$/cwt.	SHEEP \$/cwt.
1987 JANUARY	50.90	70.30	38.10	57.70	86.90	44.80
FEBRUARY	56.40	74.00	42.00	62.30	78.30	48.00
MARCH	57.70	76.10	44.60	64.50	89.90	51.80
APRIL	56.70	81.20	44.30	65.60	85.00	35.20
MAY	60.10	76.60	41.70	65.50	100.40	26.10
JUNE	57.40	80.10	44.00	65.40	74.00	34.60
JULY	54.60	83.10	42.90	65.30	74.50	35.40
AUGUST	56.40	86.80	43.90	66.70	72.00	36.50
SEPTEMBER	62.10	92.90	45.70	73.10	80.70	31.90
OCTOBER	57.80	85.60	42.50	69.50	81.30	30.80
NOVEMBER	53.90	85.00	41.60	68.30	84.10	31.20
DECEMBER	59.50	85.00	44.80	69.80	1/	28.50
1987	57.20	84.50	43.10	67.60	83.30	33.90
1986	48.50	65.40	35.30	55.70	70.80	31.50
1985	49.40	68.10	36.70	57.30	68.80	28.00
1984	46.00	63.10	37.20	56.70	56.80	21.10
1983	46.50	65.20	37.60	57.00	50.10	15.00

1/ Insufficient sales to estimate price.

Livestock Prices Received, 1987



Livestock

Expectations for 1987 were high due to above-normal rainfall in December and a major snowstorm in January. During March, winter storms crossed the state bringing rain and snow to most areas, especially to the northwest and to the eastside. For the first quarter of 1987, soil moisture supplies were adequate; therefore, range forage got off to an excellent start. On June 1, range and pasture conditions were rated at 95 percent of normal. Weather conditions were generally good for most of July, except at the higher elevations and northern ranges, where temperatures were cooler than normal, slowing development of grasses and forbs. Range and pasture conditions on August 1 were rated at 77 percent of normal, 16 points below the year before. Much needed rain fell in the month of August in which precipitation was above normal at most reporting stations. The fall of 1987 was drier than at the same time period in 1986, but fortunately, most of the State's ranges were in good to excellent condition, as a result of good late-summer moisture.

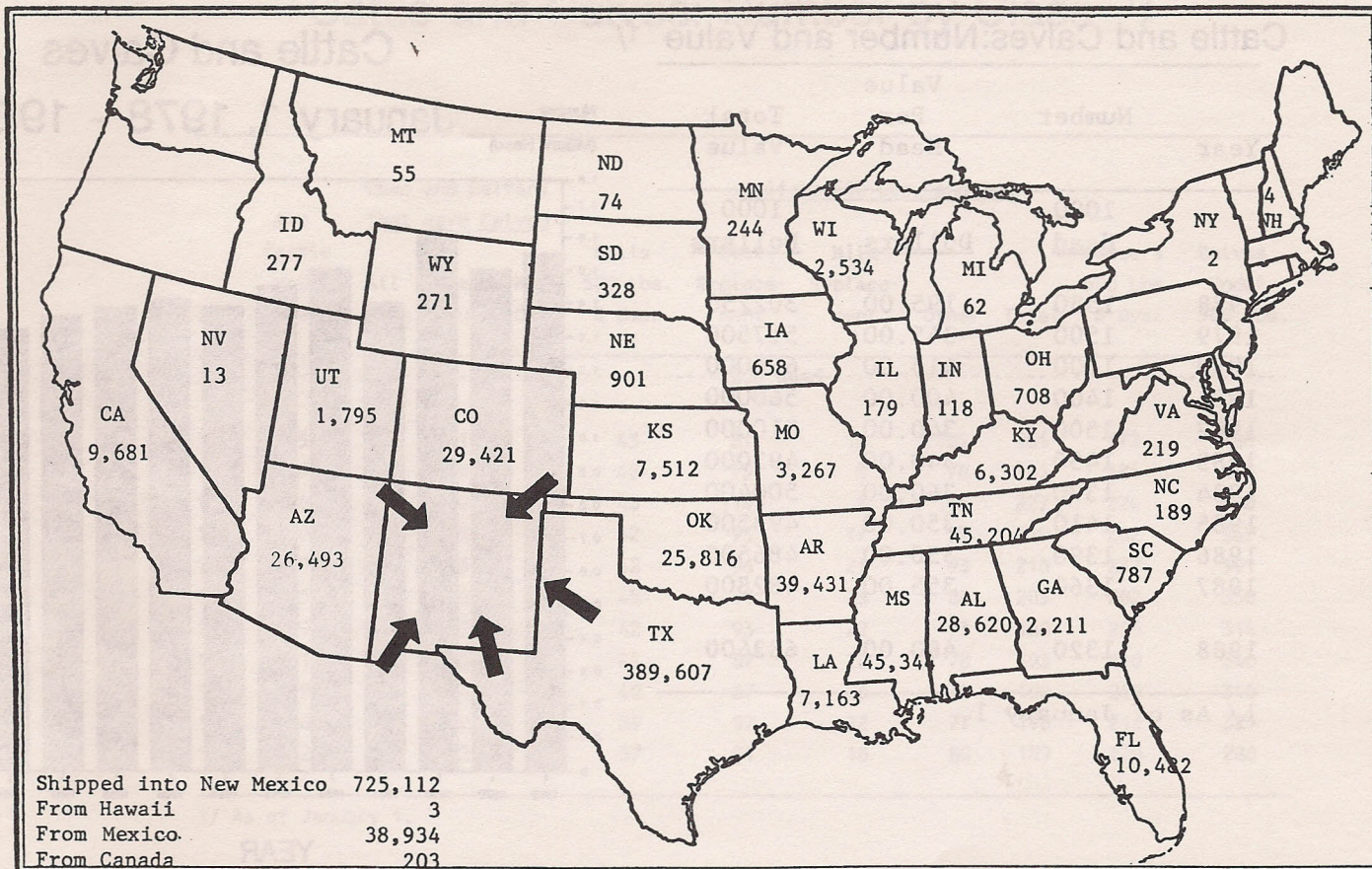
The January 1, 1988 estimate of cattle and calves in New Mexico was 1,320 thousand head, 3 percent below the estimate for January 1, 1987. The number of cows in the State declined 1 percent from the previous year with beef cows going from 529 thousand head to 527 thousand head, and dairy cows declining from 61 thousand head to 59 thousand head. The number of bulls, at 37 thousand head, was down 5 percent. Beef replacement heifers were down 6 percent to 91 thousand head and dairy replacements were down 18 percent to 18 thousand head. New Mexico's 1987 calf crop, counting both beef and dairy calves, was estimated at 490 thousand head, 7 percent below the 525 thousand head estimated for 1986. Cattle and calves on full feed for slaughter on January 1, 1988 were estimated at 154 thousand head, 2 percent below the January 1, 1987 level of 157 thousand head.

Sheep and lambs were estimated at 451 thousand head as of January 1, 1988. This was 29 thousand head less than the January 1, 1987 estimate. Sheep and lambs on feed for slaughter market totaled 30,000 head on January 1, 1988, maintaining the same level as the previous year. Wool production totaled 4,083 thousand pounds in 1987, shorn off of 467 thousand head. Hog and pig inventory of December 1, 1987 was estimated at 31,000 head, 14 percent fewer than on December 1, 1986. The total number of chickens on December 1, 1987 was estimated at 1,445 head. Total egg production in the state for the December 1, 1986-November 30, 1987 reporting year was 302 million eggs, 8 percent above the 280 million eggs produced in 1986.



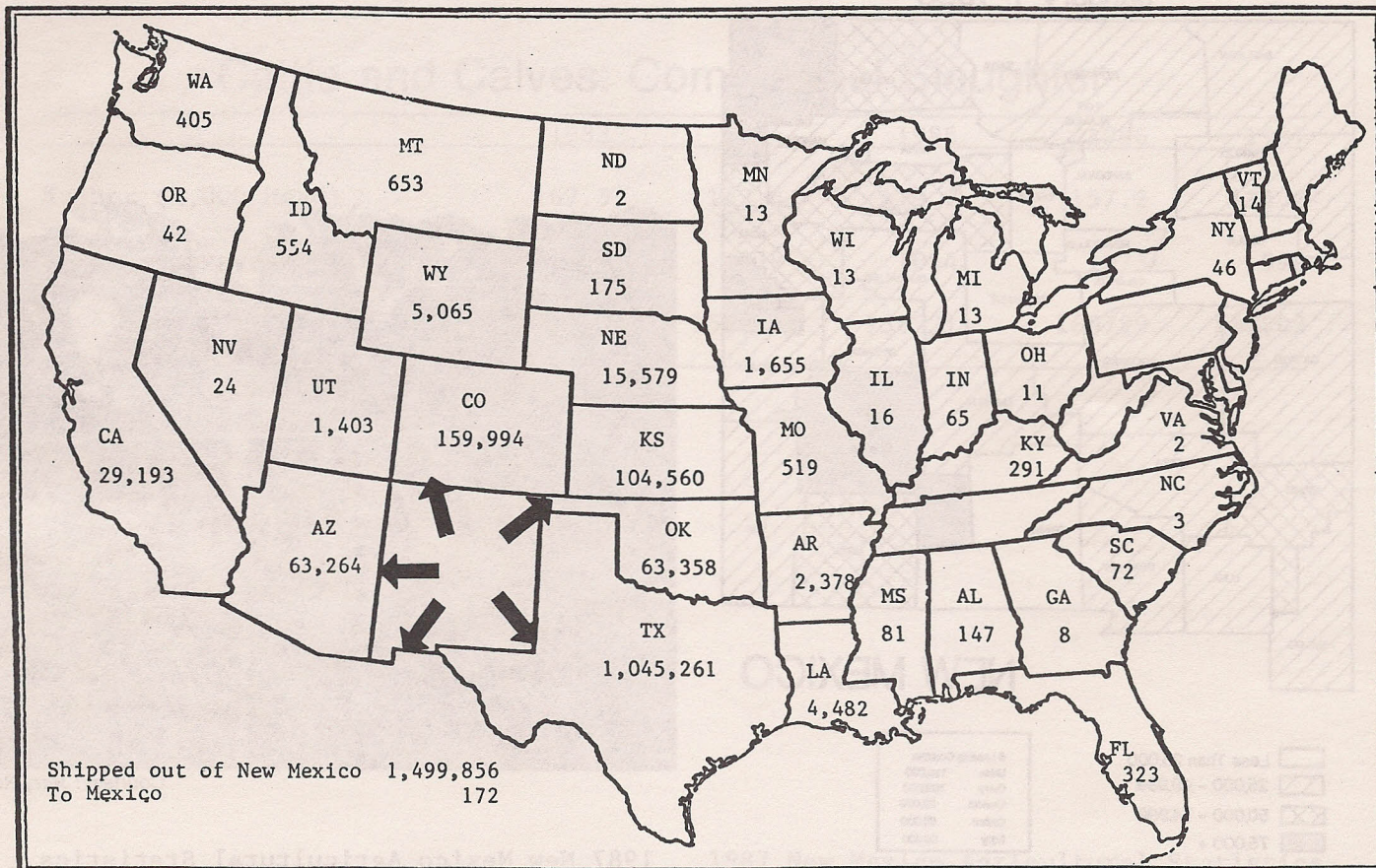
Courtesy: NMSU Ag Information

By State of Origin, 1987



CATTLE NUMBER SHIPPED OUT OF NEW MEXICO, 1987

By State of Destination, 1987



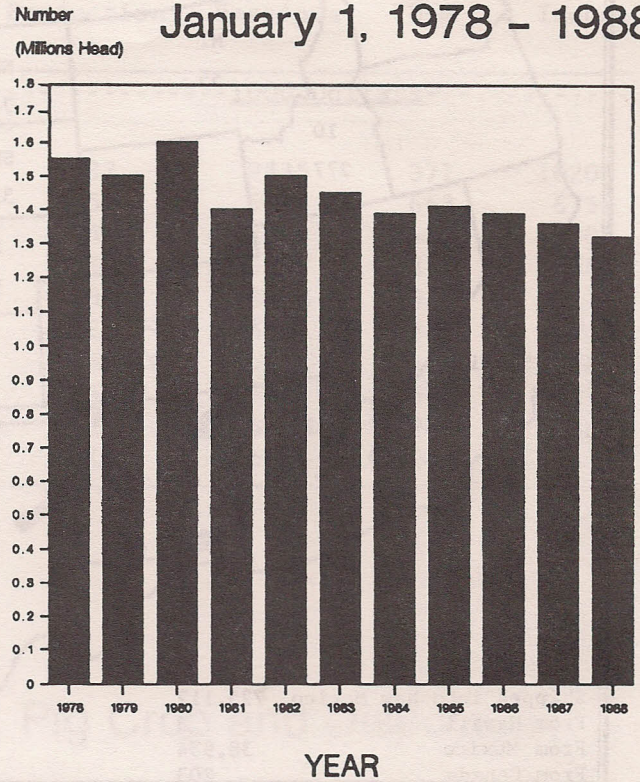
Cattle and Calves: Number and Value ^{1/}

Year	Number 1000 Head	Value Per Head Dollars	Total Value 1000 Dollars
1978	1550	195.00	302250
1979	1500	345.00	517500
1980	1600	415.00	664000
1981	1400	400.00	560000
1982	1500	340.00	510000
1983	1450	340.00	493000
1984	1390	360.00	500400
1985	1410	350.00	493500
1986	1390	350.00	486500
1987	1360	355.00	482800
1988	1320	480.00	633600

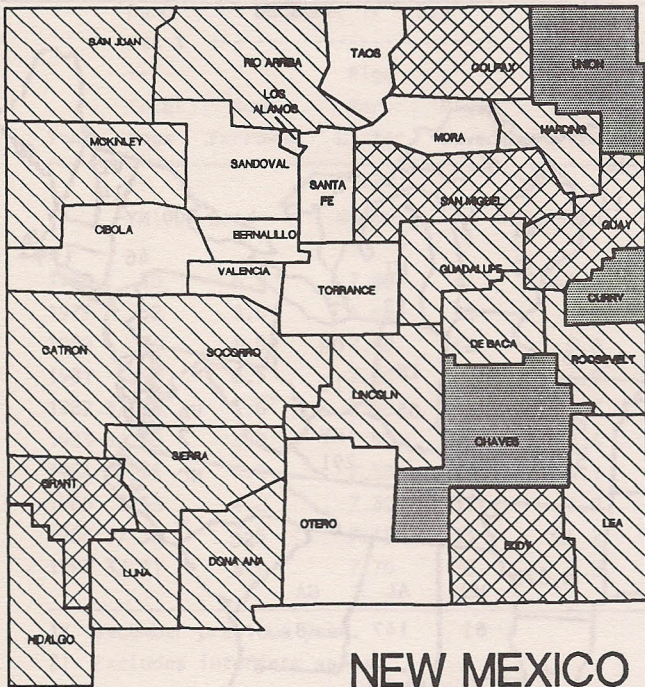
^{1/} As of January 1.

Cattle and Calves

January 1, 1978 - 1988



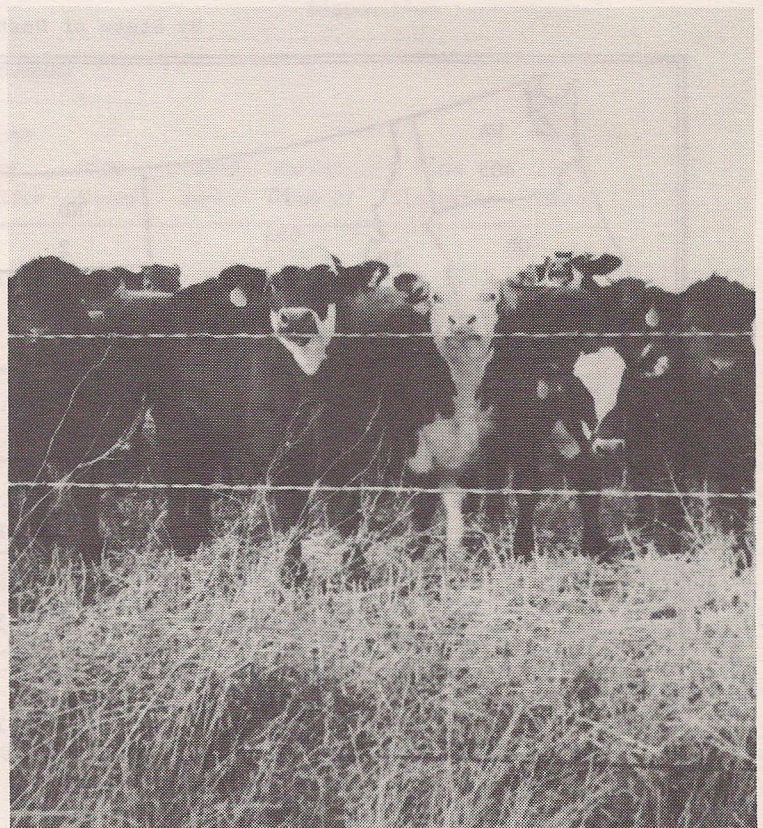
All Cattle and Calves January 1, 1988



NEW MEXICO

- Less Than 25,000
- 25,000 - 49,999
- 50,000 - 74,999
- 75,000 +

5 Leading Counties	
Union	110,000
Curry	102,000
Chavez	92,000
Colfax	80,000
Eddy	80,000



Courtesy: Jerry Ramirez

Cattle and Calves: Number by Class 1/

Year	All Cattle and Calves	Cows and Heifers That Have Calved			Heifers 500 Lbs. and Over						
		All Cows	Beef Cows	Milk Cows	Bulls 500 Lbs. & Over	Beef			Milk	Steers 500 Lbs. & Over	Calves Under 500 Lbs.
						Replace-ment	Replace-ment	Other			
-----1000 Head-----											
1978	1550	651	617	34	43	87	12	105	204	172	480
1979	1500	635	597	38	40	75	8	78	161	184	480
1980	1600	665	626	39	46	114	8	105	227	224	438
1981	1400	600	551	49	42	95	17	77	189	202	367
1982	1500	620	565	55	42	96	21	93	210	237	391
1983	1450	650	592	58	45	100	23	80	203	202	350
1984	1390	640	578	62	42	93	22	73	188	206	314
1985	1410	620	555	65	41	87	28	78	193	210	346
1986	1390	610	542	68	40	87	28	75	190	210	340
1987	1360	590	529	61	39	97	22	77	196	212	323
1988	1320	586	527	59	37	91	18	80	189	220	288

1/ As of January 1.

Cattle and Calves: Commercial Slaughter

	1983	1984	1985	1986	1987
Number (1,000 Head)	167.5	163.4	129.2	157.2	134.2
Average Liveweight (Pounds)	974	979	1054	1023	998
Total Liveweight (1,000 lbs.)	163115	159914	136221	160799	133903

Cattle and Calves: Production and Income

Year	Production 1/	Market- ings 2/	Price Per 100 Pounds		Value of Production	Cash Receipts 3/	Value of Home Use	Gross Income
			Cattle	Calves				
	---1000 Pounds---		---Dollars---			-----1000 Dollars-----		
1978	587560	1224692	52.90	60.80	315185	652105	5369	657474
1979	616680	1091480	69.20	87.60	430817	761843	6655	768498
1980	673370	1199520	64.30	77.60	435917	777401	4325	781726
1981	530450	818050	51.00	67.10	280238	425385	4708	430093
1982	545360	957060	46.80	62.60	264241	456900	4750	461650
1983	561720	947510	46.50	65.20	269089	451094	4884	455978
1984	576370	986100	46.00	63.10	276062	462276	4825	467101
1985	667030	1044120	49.40	68.10	339136	525787	5628	531415
1986	616430	1041300	48.50	65.40	308235	515374	5083	520457
1987	602130	1073600	57.20	84.50	362553	635939	4996	640935

1/ Adjustments made for changes in inventory and for inshipments.

2/ Excludes custom slaughter for use on farms where produced and interfarm sales within the State.

3/ Receipts from marketings and sale of farm slaughter.

Cattle and Calves: Inventory, Supply and Disposition

Year	All Cattle and Calves 1/	Calf Crop	Inship- ments	Marketings 2/		Farm Slaughter 3/ Cattle & Calves	Deaths	
				Cattle	Calves		Cattle	Calves
	-----1000 Head-----							
1978	1550	560	1000	1382	136	7	45	40
1979	1500	580	900	1218	91	6	30	35
1980	1600	600	700	1313	117	5	30	35
1981	1400	600	600	909	127	5	29	30
1982	1500	580	660	1078	146	6	28	32
1983	1450	570	640	1055	144	6	30	35
1984	1390	540	770	1095	130	5	25	35
1985	1410	535	720	1073	137	5	25	35
1986	1390	525	760	1097	153	4	28	33
1987	1360	490	840	1111	200	3	24	32

1/ Includes cattle on feed in feedlots.

2/ Includes custom slaughter for use on farms where produced, but excludes inter-farm sales within the state.

3/ Excludes custom slaughter for farmers at commercial establishments.

Cattle and Calves: Number on Farms by County 1/

County	All Cattle		Beef Cows		Milk Cows		Other Cattle 2/	
	1987	1988	1987	1988	1987	1988	1987	1988
-----Head-----								
BERNALILLO	23000	21000	9000	8000	4400	4300	9600	8700
CATRON	41000	39000	18000	18000	50	50	22950	20950
CHAVES	92000	92000	46000	46000	10500	10500	35500	35500
CIBOLA	19000	18000	9000	9000	50	50	9950	8950
COLFAX	60000	60000	24000	24000	100	100	35900	35900
CURRY	105000	102000	10000	9500	1000	1000	94000	91500
DE BACA	34000	32000	13000	13000	100	100	20900	18900
DONA ANA	46000	44000	8500	8500	24400	23400	13100	12100
EDDY	61000	59000	25500	25500	100	100	35400	33400
GRANT	57000	55000	29500	29500	50	50	27450	25450
GUADALUPE	34000	33000	17000	17000	50	50	16950	15950
HARDING	47000	46000	17000	17000	50	50	29950	28950
HIDALGO	45000	44000	23500	23500	50	50	21450	20450
LEA	51000	48000	21500	21500	1900	1900	27600	24600
LINCOLN	34000	34000	19500	19500	100	100	14400	14400
LUNA	45000	43000	18000	18000	200	200	26800	24800
MCKINLEY	26000	25000	15000	15000	50	50	10950	9950
MORA	24000	23000	10000	10000	50	50	13950	12950
OTERO	25000	24000	16500	16500	100	100	8400	7400
QUAY	56000	54000	23000	23000	200	200	32800	30800
RIO ARRIBA	33000	32000	21500	21500	100	100	11400	10400
ROOSEVELT	47000	46000	10500	10500	6800	6700	29700	28800
SAN JUAN	31000	30000	11500	11500	900	800	18600	17700
SAN MIGUEL	51000	50000	21000	21000	50	50	29950	28950
SANDOVAL	17000	17000	8500	8500	1600	1600	6900	6900
SANTA FE	24000	23000	7000	6500	100	150	16900	16350
SIERRA	32000	30000	10500	10500	1700	1600	19800	17900
SOCORRO	46000	44000	20500	20500	2400	1900	23100	21600
TAOS	9000	8000	4000	4000	100	100	4900	3900
TORRANCE	22000	22000	9500	9500	50	50	12450	12450
UNION	110000	110000	27000	27000	100	150	82900	82850
VALENCIA	13000	12000	4000	4000	3600	3400	5400	4600
STATE	1360000	1320000	529000	527000	61000	59000	770000	734000

1/ As of January 1.

2/ Includes cattle on feed.

Cattle and Calves: Number on Feed by County ^{1/}

County	Number on Feed						
	1982	1983	1984	1985	1986	1987	1988
	-----Head-----						
CHAVES	18000	24300	26400	34000	2/	/2	12000
CURRY	22600	36300	37600	54000	50000	49000	35000
UNION	40900	51400	47400	55000	51500	45000	50000
OTHER COUNTIES	45500	37000	34600	35000	55500	63000	57000
STATE	127000	149000	146000	178000	157000	157000	154000

1/ Includes only those animals on full feed for the slaughter market as of January 1.

2/ Included in other counties.

Range and Pasture Condition ^{1/}

Year	April	May	June	July	August	September	October	November
	-----Percent-----							
1977	55	71	77	66	69	81	77	73
1978	71	65	70	76	73	70	68	70
1979	72	79	87	91	86	88	84	79
1980	71	76	76	66	52	54	64	66
1981	57	60	61	59	75	93	95	96
1982	79	72	77	77	70	79	85	81
1983	83	87	78	81	66	65	60	64
1984	59	57	68	83	83	92	89	94
1985	92	88	95	92	81	83	87	94
1986	2/	63	58	91	93	98	100	100
1987	2/	97	95	90	77	89	90	88

1/ Range and pasture condition is expressed as a percentage. 100 percent represents the normal growth and vitality one would expect if there had been no damage from unfavorable weather, insects, pests, etc. Good to excellent, 80 and over; poor to fair, 65-79; very poor, 50-64; severe drought, 35-49; extreme drought, under 35.

2/ Discontinued

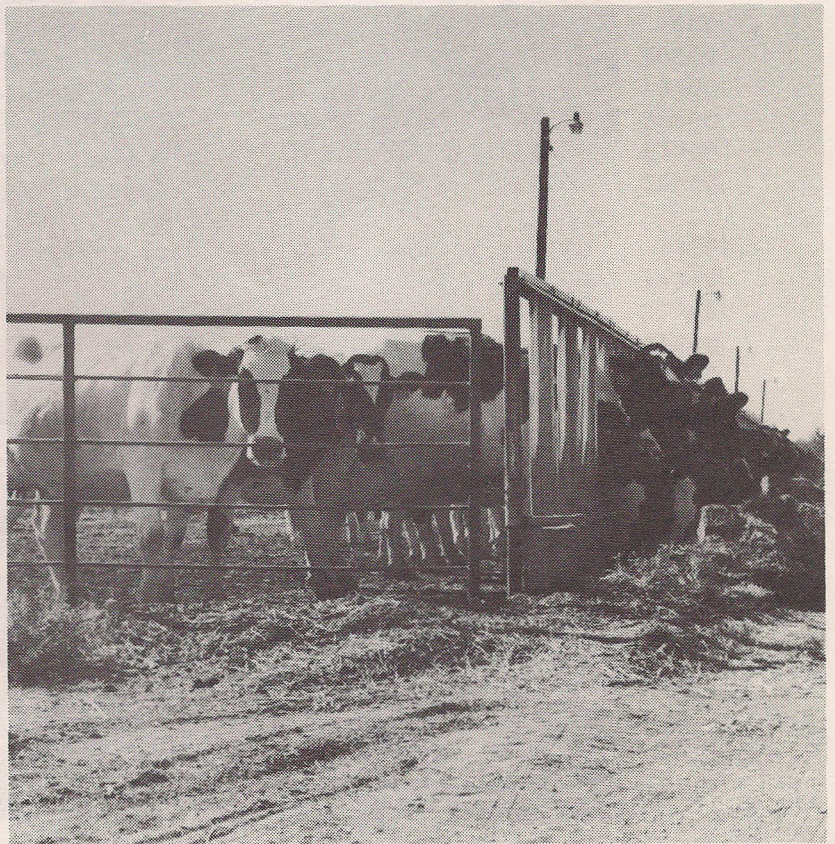
Milk: Production, Disposition, Price and Income

Year	Disposition of Milk Produced										
	Milk Cows On Farms 1/	Milk Production Per Cow	Total Milk Production	Used on Farms	Milk and Cream				Income From Dairy Products		
					Sold Wholesale		Retailled by Farmers			Price Per Quart	Value of Sales
					Whole Milk	Per 100 Pounds	Milk Equivalent	Price Per Quart			
	1000 Head	Pounds	-----Million Pounds-----		Dollars	Million Quarts	Cents	---1000 Dollars---			
1978	36	12722	458	14	430	11.50	6.5	50.0	52706	53774	
1979	38	13342	507	14	479	13.00	6.5	50.0	65526	66722	
1980	45	13378	602	14	575	14.10	6.0	53.0	84280	85570	
1981	51	13157	671	11	645	15.30	7.0	57.0	102662	103595	
1982	57	14246	812	15	780	15.30	7.9	57.0	123847	125090	
1983	61	15377	938	12	905	14.00	9.8	56.0	132170	133169	
1984	64	15719	1006	13	968	13.80	11.6	58.0	140328	141317	
1985 2/	67	16090	1078	12	1044	13.10	10.2	60.0	142904	143708	
1986	66	16545	1092	12	1055	12.70	11.6	60.0	140962	141745	
1987	58	16879	979	12	940	12.70	12.6	63.0	127292	128081	

1/ Average number during year.

2/ Revised

Year	Month	\$/cwt.
1987	JANUARY	13.30
	FEBRUARY	13.06
	MARCH	12.61
	APRIL	12.36
	MAY	12.18
	JUNE	12.33
	JULY	12.43
	AUGUST	12.68
	SEPTEMBER	12.90
	OCTOBER	12.95
	NOVEMBER	12.83
	DECEMBER	12.53
1987		12.70
1986		12.70
1985		13.10
1984		13.80
1983		14.00



Courtesy: NMSU Ag Information

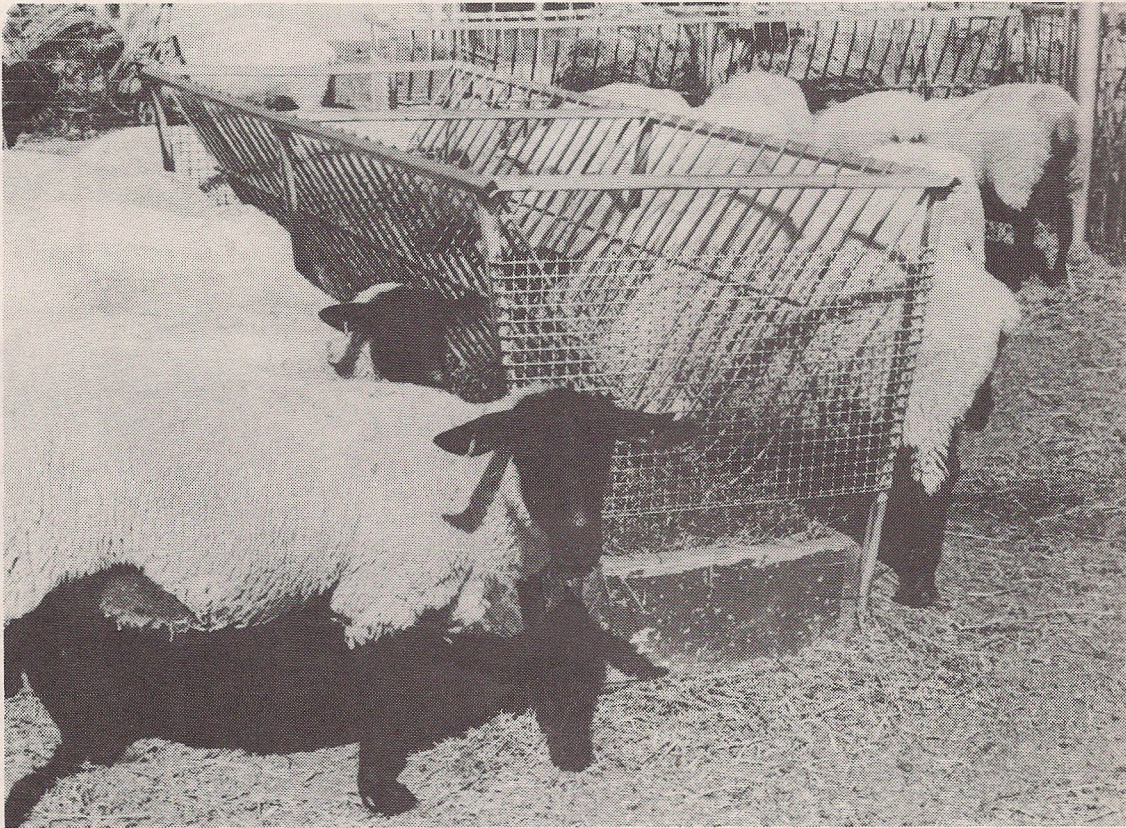
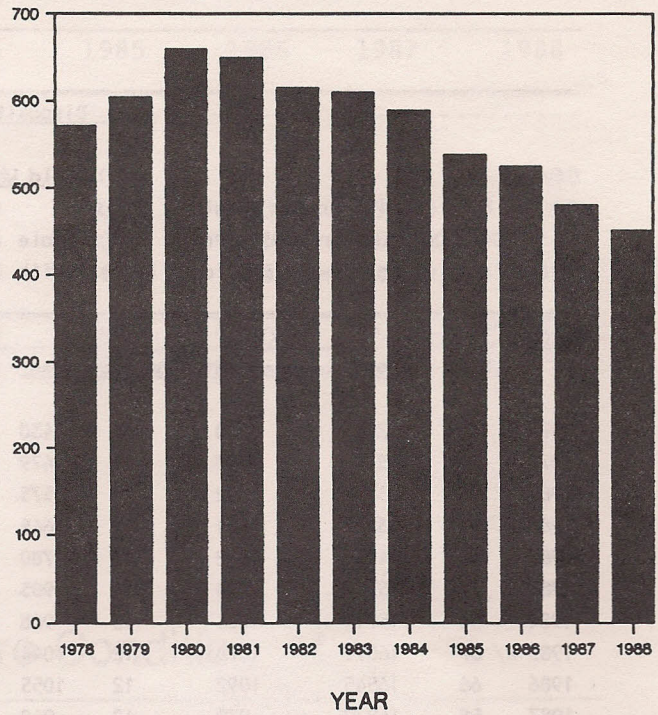
Sheep and Lambs: Number and Value ^{1/}

Year	Number	Value	
		Per Head	Total Value
	1000 Head	Dollars	1000 Dollars
1978	571	47.50	27123
1979	604	68.00	41072
1980	660	77.00	50820
1981	650	62.50	40625
1982	615	50.00	30750
1983	610	47.50	28975
1984	589	43.50	25622
1985	538	55.00	29590
1986	525	61.50	32288
1987	480	66.50	31920
1988	451	89.50	40365

^{1/} As of January 1.

Sheep and Lambs

NUMBER January 1, 1978 - 1988
(THOUSAND HEAD)



Courtesy: NMSU Ag Information

Sheep and Lambs: Commercial Slaughter

	1983	1984	1985	1986	1987
Number (1,000 Head)	141.0	74.6	203.2	133.0	65.9
Average Liveweight (Pounds)	113.0	100.0	111.0	112.0	119.0
Total Liveweight (1,000 Pounds)	15878	7481	22632	14852	7827

Sheep and Lambs: Number on Farms by County 1/

County	1988 Rank by County	1986 2/	1987	1988
		-----Head-----		
BERNALILLO	22	1500	1500	1000
CATRON	29	100	150	150
CHAVES	1	155200	132000	132000
CIBOLA	9	14000	11000	10000
COLFAX	26	900	700	600
CURRY	19	2000	1500	1500
DE BACA	7	12000	11000	12000
DONA ANA	17	1500	2300	2000
EDDY	6	23000	20500	20500
GRANT	30	200	200	100
GUADALUPE	5	35000	30000	25000
HARDING	25	800	850	850
HIDALGO	30	100	100	100
LEA	11	9100	7700	7000
LINCOLN	3	70000	70000	65000
LUNA	28	100	200	200
MCKINLEY	2	85000	80000	71600
MORA	22	1500	1500	1000
OTERO	8	15000	12000	11000
QUAY	19	2000	1500	1500
RIO ARRIBA	11	8500	8500	7000
ROOSEVELT	16	4000	3000	2500
SAN JUAN	4	50000	53000	50000
SAN MIGUEL	22	1000	1300	1000
SANDOVAL	14	5000	5000	4000
SANTA FE	27	500	400	300
SIERRA	30	100	100	100
SOCORRO	17	3500	2500	2000
TAOS	13	5500	6000	5500
TORRANCE	9	12000	10000	10000
UNION	19	1900	1500	1500
VALENCIA	14	4000	4000	4000
STATE		525000	480000	451000

1/ As of January 1.

2/ Revised.

Sheep and Lambs: Production and Income

Year	Production 1/ 1000 Pounds	Market- ings 2/ 1000 Pounds	Price Per 100 Pounds		Value of Production 1000 Dollars	Cash Receipts 3/ 1000 Dollars	Value of Home Use 1000 Dollars	Gross Income
			Sheep	Lambs				
1978	14350	20217	20.60	67.90	9923	9740	1305	11045
1979	19668	25172	27.80	71.90	13004	15322	1635	16957
1980	16226	27786	22.60	61.90	9224	13513	1374	14887
1981	23519	34683	22.70	51.00	10888	15427	1235	16662
1982	21287	26451	18.20	48.60	9179	10680	1091	11771
1983	24537	34357	15.00	50.10	10592	12482	904	13386
1984	18423	29602	21.10	56.80	9506	12838	887	13725
1985	21577	25090	28.00	68.80	13406	13341	1396	14737
1986	20673	26858	31.50	70.80	13382	16772	1690	18462
1987	19319	20920	33.90	83.30	13243	14650	1791	16441

1/ Adjustments made for changes in inventory and for inshipments.

2/ Excludes custom slaughter for use on farms where produced and interfarm sales within the State.

3/ Receipts from marketings and sale of farm slaughter.

Sheep and Lambs: Number on Farms by Class 1/

Year	Total Sheep	Sheep On Feed	Stock Sheep				
			Total	Lambs		One Year and Over	
				Ewes	Wethers and Rams	Ewes	Wethers and Rams
1978	571	25	546	76	9	437	24
1979	604	49	555	92	8	432	23
1980	660	65	595	96	8	468	23
1981	650	55	595	96	8	468	23
1982	615	20	595	96	8	468	23
1983	610	45	565	81	9	452	23
1984	589	64	525	57	11	435	22
1985	538	52	486	63	13	391	19
1986	525	85	440	58	8	355	19
1987	480	30	450	80	8	342	20
1988	451	30	421	60	8	335	18

1/ As of January 1.

Sheep and Lambs: Number on Feed by County ^{1/}

County	1983	1984	1985	1986	1987	1988
-----Head-----						
CHAVES	41500	39000	31000	63000	27700	26000
OTHER COUNTIES	3500	25000	21000	22000	2300	4000
STATE	45000	64000	52000	85000	30000	30000

1/ As of January 1.

Sheep and Lambs: Inventory, Lamb Crop and Disposition

Year	Total Sheep & Lambs ---1000 Head---	Lambs Saved		Inshipments Sheep & Lambs -----1000 Head-----	Marketings ^{1/}		Farm Slaughter		Deaths	
		Number ---Percent---	As % of Ewes 1 Yr. & Older		Sheep	Lambs	Sheep & Lambs -----1000 Head-----	Sheep & Lambs	Sheep	Lambs
1978	571	323	74	110	71	141	33	85	70	
1979	604	363	84	153	69	231	35	70	55	
1980	660	356	76	132	106	220	30	74	68	
1981	650	407	87	116	99	318	35	54	52	
1982	615	375	80	82	93	228	35	50	56	
1983	610	350	80	104	119	234	32	40	50	
1984	589	340	78	82	99	264	27	35	48	
1985	538	325	83	44	99	172	23	38	50	
1986	525	300	85	59	70	235	23	33	43	
1987	480	275	80	29	67	170	23	33	40	

1/ Excludes interfarm sales.

Wool: Production and Value

Year	Sheep Shorn 1000 Head	Average		Price Per Pound Cents	Value 1000 Dollars
		Weight of Fleece Pounds	Produc- tion Pounds		
1978	532	9.6	5092	73	3717
1979	545	9.1	4978	92	4580
1980	555	9.2	5080	90	4572
1981	555	9.5	5280	106	5597
1982	515	9.6	4922	88	4331
1983	530	9.1	4833	76	3673
1984	539	9.2	4975	87	4328
1985	522	9.2	4819	72	3470
1986	480	9.0	4313	75	3235
1987	467	8.7	4083	120	4900

Wool: Prices Received

Year and Month	Cents/lb.
1987 JANUARY	55
FEBRUARY	88
MARCH	83
APRIL	124
MAY	124
JUNE	107
JULY	111
AUGUST	88
SEPTEMBER	85
OCTOBER	95
NOVEMBER	76
DECEMBER	120
1987	120
1986	75
1985	72
1984	87
1983	76

Hogs and Pigs: Production and Income

Year	Production	Marketings	Price Per 100 Pounds	Value of Production	Cash Receipts	Value of		Gross Income
						Home Use		
1/								
-----1000 Pounds-----			Dollars		-----1000 Dollars-----			
Liveweight								
1978	19793	20391	47.90	9487	9835	371		10206
1979	15553	14112	42.80	6657	6096	663		6759
1980	20334	17367	39.10	7951	6864	437		7301
1981	19828	20058	42.30	8468	8609	371		8980
1982	13896	16090	51.90	7280	8435	336		8771
1983	12252	12949	49.10	6086	6451	389		6840
1984	12870	11098	48.90	6348	5510	430		5940
1985	12994	11858	45.50	5959	5482	501		5983
1986	12863	13158	50.30	6524	6693	249		6942
1987	11709	11325	50.20	5917	5760	265		6025

1/ Excludes custom slaughter.

Hogs and Pigs: Number on Farms, Pig Crop and Disposition

Year	Pig Crop							Disposition			
	On Hand										
	December 1/ - May				June - November						
	Dec 1										
Total	Pigs			Pigs			Inship- ments	Market- ings 2/	Farm Slaughter	Deaths	
Hogs	Sows Farrowed	Per Litter	Pigs Saved	Sows Farrowed	Per Litter	Pigs Saved					
-----1000 Head-----											
	Number	-----1000 Head---			Number	-----1000 Head-----					
1978	50	6.0	7.80	47	5.0	7.90	40	4	92	3	6
1979	52	6.0	6.40	38	6.0	6.20	37	5	67	4	7
1980	74	6.0	7.00	42	9.0	7.60	68	4	81	4	7
1981	62	6.5	7.40	48	6.0	7.00	42	3	96	3	6
1982 3/	38	4.0	7.50	30	3.7	7.60	28	1.6	77.5	2.1	4.0
1983 3/	30	3.8	7.50	29	3.4	7.50	26	2.0	60.2	1.8	3.0
1984	35	4.2	7.30	31	4.1	7.00	29	2	52	2	3
1985	38	4.2	7.30	31	4.2	7.70	32	2	56	2	4
1986 3/	36	4.5	7.40	33	4.2	7.80	33	1	63.5	1.5	4
1987 3/	31	3.4	7.70	26	3.3	8.20	27	2	55.5	1.5	3

1/ December previous year.

2/ Excludes interfarm sales.

3/ A decimal place was used for 1982, 1983, 1986 and 1987 estimates to avoid distorting smaller disposition categories.

Hogs and Pigs: Commercial Slaughter

	1983	1984	1985	1986	1987
Number (1,000 Head)	9.3	9.2	7.3	5.7	5.0
Average Liveweight (Pounds)	221	227	219	213	212
Total Liveweight (1,000 Lbs.)	2055	2091	1604	1210	1065

Hogs and Pigs: Number on Farms by County ^{1/}

County	1987 Rank by County	1985	1986	1987
-----Head-----				
BERNALILLO	12	400	400	350
CATRON	23	100	100	100
CHAVES	5	1800	1500	1100
CIBOLA	23	100	100	100
COLFAX	16	200	200	200
CURRY	8	500	500	500
DE BACA	30	100	80	80
DONA ANA	8	2500	2000	500
EDDY	20	200	150	150
GRANT	23	100	100	100
GUADALUPE	23	100	100	100
HARDING	30	100	80	80
HIDALGO	1	9000	9000	8500
LEA	22	200	140	140
LINCOLN	23	100	100	100
LUNA	2	8500	8300	7500
MCKINLEY	10	300	450	450
MORA	32	100	50	50
OTERO	3	5300	5000	4600
QUAY	10	500	500	450
RIO ARRIBA	13	300	300	300
ROOSEVELT	6	1500	1500	1000
SAN JUAN	16	300	200	200
SAN MIGUEL	23	100	100	100
SANDOVAL	13	300	300	300
SANTA FE	13	300	300	300
SIERRA	20	200	150	150
SOCORRO	23	100	100	100
TAOS	16	200	200	200
TORRANCE	16	200	200	200
UNION	4	2500	2000	2000
VALENCIA	6	1800	1800	1000
STATE		38000	36000	31000

1/ As of December 1.

Chickens: Number on Farms, by Class and Inventory Value

Year	Total Chickens	Of Laying Age		Pullets Not of Laying Age	Other	Value Per Head	Total Value
		Hens	Pullets				
		-----1000 Head-----				Dollars	1000 Dollars
1978	2110	928	619	561	2	2.15	4537
1979	2190	800	819	569	2	2.20	4818
1980	2145	715	820	605	5	1.70	3647
1981	1825	939	570	310	6	1.95	3559
1982	1548	720	435	385	8	1.90	2941
1983	1544	797	354	383	10	2.45	3783
1984	1502	797	353	344	8	2.00	3004
1985	1470	638	462	361	9	2.25	3308
1986	1615	743	427	439	6	2.45	3957
1987	1445	660	560	221	4	2.00	2890

Layers: Number, Egg Production, Price and Value

Year	Average Number Layers On Hand	Egg Production	Price Per Dozen	Value of Production
	1000 Head			
1978	1484	359	57.0	17053
1979	1519	368	61.0	18707
1980	1588	378	60.0	18900
1981	1415	347	68.0	19663
1982	1247	302	60.0	15100
1983	1180	287	63.0	15068
1984	1160	282	74.0	17390
1985	1144	273	56.0	12740
1986	1146	280	62.0	14467
1987	1207	302	55.0	13842

Eggs: Monthly Prices Received

Year	Jan	Feb	Mar	Apr	May	June	July	Aug	Sept	Oct	Nov	Dec
-----Cents Per Dozen-----												
1983	52.0	55.0	57.0	55.0	63.0	64.0	61.0	68.0	69.0	71.0	83.0	89.0
1984	105.0	103.0	77.0	99.0	67.0	64.0	62.0	60.0	51.0	57.0	57.0	57.0
1985	57.0	47.0	55.0	51.0	48.0	58.0	51.0	58.0	64.0	64.0	67.0	66.0
1986	66.0	60.0	67.0	55.0	56.0	48.0	60.0	69.0	65.0	57.0	69.0	67.0
1987	56.0	56.0	55.0	55.0	46.0	53.0	50.0	53.0	62.0	49.0	55.0	48.0

Chickens: Number on Farms by County ^{1/}

County	1987 Rank by County	1985	1986	1987
-----Head-----				
BERNALILLO	2	450000	457000	396000
CATRON	31	500	300	200
CHAVES	7	5000	3200	2500
CIBOLA	25	1000	700	500
COLFAX	14	2500	1600	1300
CURRY	12	3000	2000	1500
DE BACA	25	1000	700	500
DONA ANA	1	900000	1073000	988000
EDDY	5	10000	7000	7000
GRANT	16	2000	1300	900
GUADALUPE	21	1500	1000	700
HARDING	25	1000	700	500
HIDALGO	25	1000	700	500
LEA	6	6000	3900	2900
LINCOLN	31	500	300	200
LUNA	25	1000	700	500
MCKINLEY	25	1000	700	500
MORA	21	1500	1000	700
OTERO	14	2500	1600	1300
QUAY	16	2000	1300	900
RIO ARRIBA	8	5000	2900	2300
ROOSEVELT	4	46000	37000	9000
SAN JUAN	9	4000	2300	1800
SAN MIGUEL	9	4000	2300	1800
SANDOVAL	21	1500	1000	700
SANTA FE	16	2000	1300	900
SIERRA	21	1500	1000	700
SOCORRO	16	2000	1300	900
TAOS	3	2500	1600	15600
TORRANCE	16	2000	1300	900
UNION	9	3500	2300	1800
VALENCIA	12	3000	2000	1500
STATE		1470000	1615000	1445000

1/ As of December 1.

Field Crops

Sorghum and Corn: Limited seeding of grain sorghum got underway in most producing areas in mid-May and was near completion by the end of June. Some fields began heading out early August with the crop in fair to good condition. The crop was rapidly progressing by late August and most of the crop had headed out by September. By early October silage harvest had ended and farmers were waiting for the first hard frost to begin grain harvest. Harvest activity began in many areas by mid-October and continued steadily through November. Eighty to 90 percent of the crop had been harvested by November 30. Minor harvest activity remained by mid-December. Seeding of the 1987 corn crop neared completion by the end of May with early fields up to an acceptable stand. The corn crop was in good condition with some fields beginning to show tassels by early July. Most of the crop had tasselled out one month later, but the condition of the crop had dropped to fair to good. Much of the crop was in the dough stage late August. The crop reached the dent phase mid-September with light harvest activity beginning shortly thereafter. Harvest was steady October through November, and farm operators were winding up corn harvest in most areas by late November.

Cotton: Cotton seeding got underway on a limited scale in the Mesilla Valley the first week of April, and accelerated rapidly in the major production areas by early May as soil temperatures increased. Nearly 45 percent of the crop had been planted by May 4, up 20 percentage points from one year ago. Hot days and warm nights resulted in good emergence to earlier planted fields by mid-May, and by June nearly all the state's cotton acreage had been seeded. The crop, however, lagged behind previous year's development in some areas. Squaring was reported by mid-June, and by month's end 90 percent of the crop had squared; over 30 percent had begun to set bolls, with warm, humid temperatures helping the crop return to normal development. By mid-August boll set was nearly complete; some bolls had begun to open. Mid-September saw bolls maturing well behind 1986 due to cool temperatures statewide and rainfall in eastern New Mexico. Forty percent of the bolls had opened, 55 percentage points below last year. Harvest began on a limited scale the first week of October; however, warmer temperatures were still needed in most production areas to aid crop maturity. Picking gained momentum throughout October in the southern valleys, and by month's end, had just started on the High Plains and in the east. A shortage of cotton trailers slowed harvest in Lea County in late November; however, over 60 percent of the cotton acreage had been harvested at least once. A major winter storm hit in mid-December virtually shutting down picking until fields dried; it was estimated that 87 percent of the 1987 crop had been harvested at the time the storm hit. Harvest was complete by February 1, with many fields being plowed under. Gins began to shut down in some areas.

Alfalfa: Alfalfa fields began showing signs of growth and development in southern and central counties by early March, with northern areas breaking dormancy two weeks later. Below normal temperatures early to mid-April retarded growth statewide; however, warm weather later in the month provided excellent growing conditions. The first cuttings of the 1987 alfalfa crop got underway the first part of May in the southern producing areas and slowly moved northward. Baling of the first cut was slowed by wet weather. Weevil and aphid build-ups were reported, as well as late season frost damage. Shorter days and cooler nightly temperatures had virtually stopped growth in many areas by mid-October, as farmers considered final cuttings. Scattered showers continually hampered curing conditions during the later part of the growing season.

Acreage and Value of Principle Field Crops

Commodity	Year	Unit	Acreage	Yield Per	Production	Season Avg.	Value of
			Harvested	Acres		Price	Production
			1000 Acres	Unit	1000	Dollars	1000 Dollars
GENERAL CROPS							
CORN FOR GRAIN	1986	BU.	55	150.0	8250	1.85	15263
	1987	BU.	49	155.0	7595	1.90	14431
CORN FOR SILAGE	1986	TONS	22	20.0	440	---	---
	1987	TONS	16	20.0	320	---	---
WINTER WHEAT	1986	BU.	460	22.0	10120	2.25	22770
	1987	BU.	340	32.0	10880	2.20	23936
BARLEY	1986	BU.	16	65.0	1040	2.05	2132
	1987	BU.	11	70.0	770	1.60	1232
SORGHUM GRAIN	1986	BU.	230	45.0	10350	1.70	17595
	1987	BU.	140	57.0	7980	1.90	15162
SORGHUM SILAGE	1986	TONS	3	12.0	36	---	---
	1987	TONS	3	13.0	39	---	---
UPLAND COTTON	1986	LBS.	50	595	62 1/	.560	16666
	1987	LBS.	62	689	89 1/	.665	28409
AMERICAN-PIMA COTTON	1986	LBS.	11.1	718	16.6 1/	.904	7203
	1987	LBS.	13.9	642	18.6 1/	1.06	9464
COTTONSEED	1986	TONS	---	---	30.5	95.00	2898
	1987	TONS	---	---	42.3	97.00	4103
POTATOES	1986	CWT.	9.0	310	2790	5.00	13950
	1987	CWT.	10.0	350	3500	4.15	14525
PEANUTS 2/	1986	LBS.	12.7	2260	28700	.365	10476
	1987	LBS.	12.3	2700	33210	.310	10295
CHILE	1986	TONS	22.1	1.60 3/	35.36	1054	37269
	1987	TONS	23.4	1.58 3/	36.97	1060	39190
HAY CROPS							
ALL HAY	1986	TONS	310	4.25	1319	74.50	98266
	1987	TONS	305	4.40	1341	89.00	119349
ALFALFA HAY	1986	TONS	240	5.00	1200	---	---
	1987	TONS	240	5.10	1224	---	---
ALL OTHER HAY	1986	TONS	70	1.70	119	---	---
	1987	TONS	65	1.80	117	---	---

1/ 480 pound net weight bales.

2/ Estimates comprised of quota and non-quota peanuts.

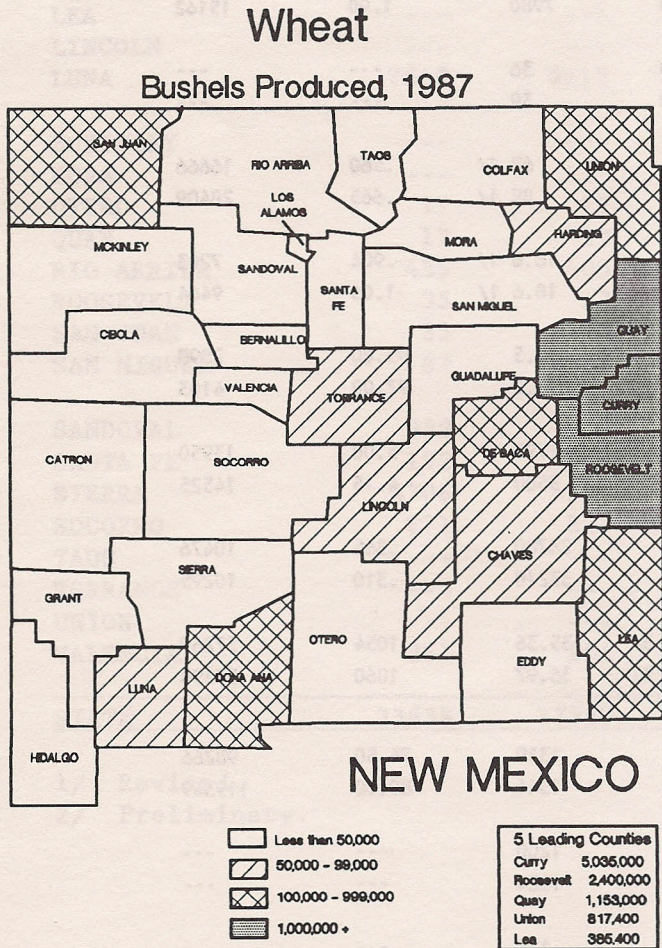
3/ 5:1 ratio was used to convert green tonnage to a dry weight equivalent for long hot and long mild varieties; an 8:1 ratio was used to convert jalapeno green tonnage to a dry weight equivalent.

Wheat: Acreage, Production and Value

Year	Acreage		Yield Per	Production	Price	Value
	Planted 1/	Harvested	Acres		Per Bushel	of Production
	1000 Acres	1000 Acres	Bushels	1000 Bushels	Dollars	1000 Dollars
1978	559	336	18.0	6048	2.85	17237
1979	576	410	22.0	9020	3.91	35268
1980	650	500	21.0	10500	3.76	39480
1981	700	500	22.0	11000	3.64	40040
1982	730	510	25.0	12750	3.62	46155
1983	750	470	29.0	13630	3.48	47432
1984	730	460	26.0	11960	3.36	40186
1985	730	570	36.0	20520	2.90	59508
1986	740	460	22.0	10120	2.25	22770
1987	660	340	32.0	10880	2.20	23936

1/ Includes area planted in preceding fall.

Planting of the 1987 wheat crop was well underway by early September with 20 percent of the crop seeded. Plants had started to emerge and some fields were up to good stand. Planting peaked and was winding down by mid-October, with most fields showing good growth due to above-normal rainfall. By the end of October some fields were ready for winter grazing and 70 percent of the crop was being grazed by late November. Wheat was greening and showing signs of growth early in March with soil moisture supplies adequate throughout the growing season. However, low temperatures were limiting growth. Livestock movement to summer pastures was underway during March. Russian wheat aphid populations increased rapidly throughout April, with growers actively spraying. Most fields were jointing and booting by the end of April, with heading reported by the first of May. Harvest began mid-June and was winding down in most areas by mid-July.



Wheat: Acreage, Yield, and Production by County

COUNTY	ACRES PLANTED			HARVESTED FOR GRAIN								
	ALL PURPOSES			ACRES			YIELD PER ACRE			PRODUCTION		
	IRRIG.	NON-IRRIG.	TOTAL	IRRIG.	NON-IRRIG.	TOTAL	IRRIG.	NON-IRRIG.	TOTAL	IRRIG.	NON-IRRIG.	TOTAL
1986												
ACRES						BUSHEL						
BERNALILLO	---	150	150	---	---	---	---	---	---	---	---	---
CATRON	---	200	200	---	---	---	---	---	---	---	---	---
CHAVES	6500	---	6500	2000	---	2000	50.0	---	50.0	100000	---	100000
CIBOLA	300	150	450	225	125	350	45.0	9.0	32.1	10125	1125	11250
COLFAX	1300	700	2000	1000	500	1500	30.0	15.0	25.0	30000	7500	37500
CURRY	52000	223000	275000	41000	168300	209300	48.0	16.0	22.3	1968000	2692800	4660800
DE BACA	4000	500	4500	1500	300	1800	40.0	15.0	35.8	60000	4500	64500
DONA ANA	3000	---	3000	2300	---	2300	60.0	---	60.0	138000	---	138000
EDDY	1000	---	1000	150	---	150	45.0	---	45.0	6750	---	6750
GRANT	200	100	300	---	---	---	---	---	---	---	---	---
GUADALUPE	200	800	1000	---	800	800	---	18.0	18.0	---	14400	14400
HARDING	1800	10200	12000	800	4900	5700	27.0	12.0	14.1	21600	58800	80400
HIDALGO	500	---	500	500	---	500	60.0	---	60.0	30000	---	30000
LEA	17000	5400	22400	10950	1600	12550	30.0	15.0	28.1	328500	24000	352500
LINCOLN	150	50	200	---	---	---	---	---	---	---	---	---
LUNA	1500	---	1500	1400	---	1400	60.0	---	60.0	84000	---	84000
MCKINLEY	---	---	---	---	---	---	---	---	---	---	---	---
MORA	50	50	100	---	---	---	---	---	---	---	---	---
OTERO	250	---	250	---	---	---	---	---	---	---	---	---
QUAY	17000	111000	128000	12000	40000	52000	24.0	12.0	14.8	288000	480000	768000
RIO ARRIBA	150	1700	1850	---	1700	1700	---	15.0	15.0	---	25500	25500
ROOSEVELT	50000	180000	230000	30000	108000	138000	40.0	10.0	16.5	1200000	1080000	2280000
SAN JUAN	5200	---	5200	3750	---	3750	90.0	---	90.0	337500	---	337500
SAN MIGUEL	600	100	700	400	100	500	24.0	13.0	21.8	9600	1300	10900
SANDOVAL	50	50	100	50	---	50	40.0	---	40.0	2000	---	2000
SANTA FE	2800	900	3700	1200	350	1550	43.0	10.0	35.5	51600	3500	55100
SIERRA	200	---	200	200	---	200	65.0	---	65.0	13000	---	13000
SOCORRO	300	---	300	150	---	150	70.0	---	70.0	10500	---	10500
TAOS	350	50	400	---	---	---	---	---	---	---	---	---
TORRANCE	1200	1500	2700	1200	100	1300	60.0	13.0	56.4	72000	1300	73300
UNION	28000	7000	35000	17800	4400	22200	50.0	14.0	42.9	890000	61600	951600
VALENCIA	800	---	800	250	---	250	50.0	---	50.0	12500	---	12500
STATE	196400	543600	740000	128825	331175	460000	44.0	13.5	22.0	5663675	4456325	10120000
1987												
ACRES						BUSHEL						
BERNALILLO	---	200	200	---	150	150	---	20.0	20.0	---	3000	3000
CATRON	150	---	150	---	---	---	---	---	---	---	---	---
CHAVES	4500	---	4500	1550	---	1550	61.0	---	61.0	94550	---	94550
CIBOLA	250	---	250	250	---	250	45.0	---	45.0	11250	---	11250
COLFAX	1400	400	1800	900	400	1300	37.0	13.0	29.6	33300	5200	38500
CURRY	46000	229000	275000	37000	120000	157000	55.0	25.0	32.1	2035000	3000000	5035000
DE BACA	3450	---	3450	2000	---	2000	50.0	---	50.0	100000	---	100000
DONA ANA	2300	---	2300	2200	---	2200	70.0	---	70.0	154000	---	154000
EDDY	550	---	550	150	---	150	44.0	---	44.0	6600	---	6600
GRANT	200	100	300	---	---	---	---	---	---	---	---	---
GUADALUPE	200	900	1100	---	850	850	---	30.0	30.0	---	25500	25500
HARDING	1700	5500	7200	800	1700	2500	31.0	19.0	22.8	24800	32300	57100
HIDALGO	300	---	300	300	---	300	63.0	---	63.0	18900	---	18900
LEA	29200	2000	31200	9400	---	9400	41.0	---	41.0	385400	---	385400
LINCOLN	150	---	150	---	---	---	---	---	---	---	---	---
LUNA	800	---	800	800	---	800	65.0	---	65.0	52000	---	52000
MCKINLEY	50	350	400	25	50	75	19.0	14.0	15.7	475	700	1175
MORA	---	100	100	---	---	---	---	---	---	---	---	---
OTERO	200	---	200	125	---	125	60.0	---	60.0	7500	---	7500
QUAY	11000	89000	100000	7000	41000	48000	30.0	23.0	24.0	210000	943000	1153000
RIO ARRIBA	150	1700	1850	---	1000	1000	---	15.0	15.0	---	15000	15000
ROOSEVELT	50000	135000	185000	30000	60000	90000	42.0	19.0	26.7	1260000	1140000	2400000
SAN JUAN	3400	---	3400	3400	---	3400	95.0	---	95.0	323000	---	323000
SAN MIGUEL	1000	100	1100	350	100	450	30.0	15.0	26.7	10500	1500	12000
SANDOVAL	50	50	100	---	25	25	---	15.0	15.0	---	375	375
SANTA FE	1400	550	1950	425	550	975	50.0	20.0	33.1	21250	11000	32250
SIERRA	300	---	300	300	---	300	55.0	---	55.0	16500	---	16500
SOCORRO	300	---	300	200	---	200	62.0	---	62.0	12400	---	12400
TAOS	400	50	450	400	---	400	40.0	---	40.0	16000	---	16000
TORRANCE	1500	700	2200	1300	100	1400	65.0	21.0	61.9	84500	2100	86600
UNION	28300	4600	32900	13000	2100	15100	59.0	24.0	54.1	767000	50400	817400
VALENCIA	500	---	500	100	---	100	50.0	---	50.0	5000	---	5000
STATE	189700	470300	660000	111975	228025	340000	50.5	22.9	32.0	5649925	5230075	10880000

All Hay: Acreage, Production, Value and Farm Stocks

Crop Year	Acreage Harvested	Yield Per Harvested Acre	Production 1000 Tons	Price Per Ton Dollars	Value of Production 1000 Dollars	On Farm Stocks -----	
						Jan. 1	May 1
	1000 Acres	Tons	1000 Tons	Dollars	1000 Dollars	1000 Tons	
1978	310	3.52	1092	64.00	69888	393	127
1979	319	3.76	1199	69.00	82731	426	66
1980	310	3.69	1144	86.50	98956	456	108
1981	335	4.03	1350	84.00	113400	343	114
1982	320	4.21	1348	75.00	101100	594	122
1983	320	4.38	1401	90.00	126090	566	148
1984	350	4.25	1488	99.00	147312	350	70
1985	330	4.35	1436	80.00	114880	432	119
1986	310	4.25	1319	74.50	98266	603	230
1987	305	4.40	1341	89.00	119349	1/ 594	92
1988	---	---	---	---	---	2/ 536	67

1/ December 1, 1986.

2/ December 1, 1987.

All Hay: Acreage, Yield and Production by County

County	-----1986-----			-----1987-----		
	Acreage Harvested	Yield Per Acre	Production Tons	Acreage Harvested	Yield Per Acre	Production Tons
	Acres	Tons	Tons	Acres	Tons	Tons
BERNALILLO	4600	4.39	20200	4900	4.34	21250
CATRON	350	2.29	800	200	2.25	450
CHAVES	49200	5.92	291400	50900	6.24	317700
CIBOLA	1700	3.24	5500	1600	3.50	5600
COLFAX	12400	2.50	31000	12500	2.38	29800
CURRY	14600	2.56	37400	13100	2.56	33600
DE BACA	5400	4.52	24400	5500	4.09	22500
DONA ANA	19800	6.16	121900	15800	6.41	101240
EDDY	32900	5.43	178500	32800	5.82	190880
GRANT	1000	3.50	3500	800	4.00	3200
GUADALUPE	1700	2.65	4500	1300	2.58	3350
HARDING	3500	1.00	3500	3500	1.14	4000
HIDALGO	850	3.82	3250	1000	3.88	3880
LEA	11700	3.94	46150	10200	4.11	41940
LINCOLN	800	4.63	3700	800	5.06	4050
LUNA	2100	5.52	11600	2000	5.24	10480
MCKINLEY	1200	2.75	3300	1000	2.50	2500
MORA	8300	2.05	17000	8100	2.01	16300
OTERO	3100	4.68	14500	2400	4.98	11960
QUAY	8300	4.00	33200	7500	3.60	27000
RIO ARRIBA	11400	1.82	20700	12100	2.21	26700
ROOSEVELT	8600	3.29	28300	8500	3.57	30350
SAN JUAN	27700	4.90	135700	30900	4.82	148800
SAN MIGUEL	7900	2.82	22300	8200	3.13	25700
SANDOVAL	4700	3.47	16300	4600	3.70	17000
SANTA FE	5100	3.84	19600	4900	3.76	18400
SIERRA	2400	6.21	14900	2200	5.66	12460
SOCORRO	11900	5.26	62600	12400	5.28	65460
TAOS	15800	2.13	33700	15600	2.07	32350
TORRANCE	8500	3.67	31200	7800	4.33	33800
UNION	8700	3.06	26600	8400	3.21	27000
VALENCIA	13800	3.75	51800	13500	3.80	51300
STATE	310000	4.25	1319000	305000	4.40	1341000

Alfalfa and Other Hay: Acreage, Yield and Production

Year	-----Alfalfa Hay-----			-----All Other Hay-----		
	Acreage	Yield Per	Production	Acreage	Yield Per	Production
	Harvested	Acre		Harvested	Acre	
1000		1000	1000		1000	
	Acres	Tons	Tons	Acres	Tons	Tons
1978	240	4.20	1008	70	1.20	84
1979	245	4.50	1103	74	1.30	96
1980	240	4.30	1032	70	1.60	112
1981	260	4.70	1222	75	1.70	128
1982	250	5.00	1250	70	1.40	98
1983	250	5.10	1275	70	1.80	126
1984	260	5.10	1326	90	1.80	162
1985	250	5.20	1300	80	1.70	136
1986	240	5.00	1200	70	1.70	119
1987	240	5.10	1224	65	1.80	117

Alfalfa Hay: Acreage, Yield and Production by County

County	-----1986-----			-----1987-----		
	Acreage	Yield Per	Production	Acreage	Yield Per	Production
	Harvested	Acre		Harvested	Acre	
	Acres	Tons	Tons	Acres	Tons	Tons
BERNALILLO	4000	4.7	18800	4500	4.5	20250
CATRON	150	3.3	500	100	3.0	300
CHAVES	48000	6.0	288000	50000	6.3	315000
CIBOLA	1400	3.5	4900	1500	3.6	5400
COLFAX	8000	3.0	24000	8500	2.8	23800
CURRY	3000	5.9	17700	3100	6.0	18600
DE BACA	4000	5.3	21200	4500	4.5	20300
DONA ANA	19000	6.3	119700	15000	6.6	99000
EDDY	32000	5.5	176000	32000	5.9	188800
GRANT	600	4.5	2700	600	4.7	2800
GUADALUPE	1300	3.0	3900	1000	2.9	2900
HARDING	---	---	---	500	2.0	1000
HIDALGO	450	5.0	2250	400	5.5	2200
LEA	10500	4.1	43050	9000	4.3	38700
LINCOLN	700	5.0	3500	700	5.5	3850
LUNA	1800	6.0	10800	1600	5.9	9400
MCKINLEY	400	4.0	1600	500	3.0	1500
MORA	3000	3.0	9000	3100	2.5	7800
OTERO	2700	5.0	13500	2000	5.5	11000
QUAY	7000	4.3	30100	6000	4.0	24000
RIO ARRIBA	4000	2.4	9600	4100	3.2	13100
ROOSEVELT	4000	5.0	20000	4000	5.0	20000
SAN JUAN	26800	5.0	134000	30000	4.9	147000
SAN MIGUEL	3500	5.0	17500	3700	5.0	18500
SANDOVAL	3000	4.3	12900	3100	4.5	14000
SANTA FE	4700	4.0	18800	4500	3.9	17600
SIERRA	2000	7.0	14000	2000	6.0	12000
SOCORRO	11000	5.5	60500	11500	5.5	63300
TAOS	11000	2.5	27500	11100	2.3	25600
TORRANCE	7000	4.0	28000	6500	4.8	31200
UNION	3000	6.0	18000	2900	5.9	17100
VALENCIA	12000	4.0	48000	12000	4.0	48000
STATE	240000	5.0	1200000	240000	5.1	1224000

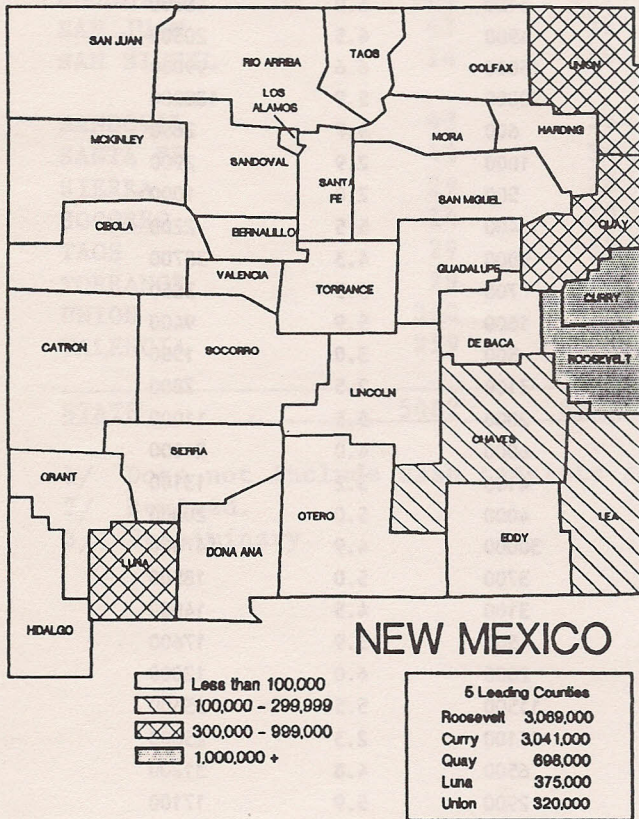
Sorghum: Acreage, Production and Value

Crop Year	Planted For All Purposes	Harvested for Grain				Harvested for Silage			
		Acreage	Yield	Production	Price Per Bushel	Value of Production	Acreage	Yield	Production
		1000 Acres	1000 Bushels	1000 Bushels	Dollars	1000 Dollars	1000 Acres	1000 Tons	1000 Tons
		Acres	Acres	Bushels	Bushels	Dollars	Dollars	Acres	Tons
1978	336	267	46.0	12282	2.22	27266	9	13.0	117
1979	319	258	52.0	13416	2.49	33406	9	13.5	122
1980	340	257	40.0	10280	3.42	35158	11	12.5	138
1981	335	272	45.0	12240	2.47	30233	7	17.0	119
1982	330	280	47.0	13160	2.72	35795	7	23.0	161
1983	200	150	42.0	6300	3.00	18900	16	17.0	272
1984	300	280	55.0	15400	2.62	40348	3	18.0	54
1985	305	290	48.0	13920	2.34	32573	1	12.0	12
1986 1/	250	230	45.0	10350	1.70	17595	3	12.0	36
1987	165	140	57.0	7980	1.90	15162	3	13.0	39

1/ 1986 Revised.

Grain Sorghum

Bushels Produced, 1987



Courtesy: NMSU Ag Information

Sorghum: Acreage, Yield and Production by County

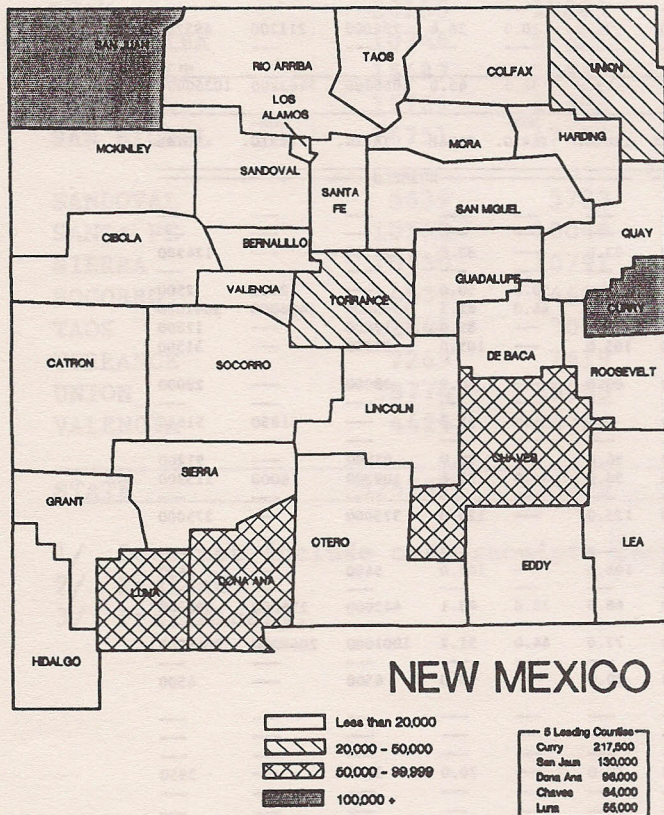
COUNTY	ACRES PLANTED			HARVESTED FOR GRAIN								
	ALL PURPOSES			ACRES			YIELD PER ACRE			PRODUCTION		
	IRRIG.	NON-IRRIG.	TOTAL	IRRIG.	NON-IRRIG.	TOTAL	IRRIG.	NON-IRRIG.	TOTAL	IRRIG.	NON-IRRIG.	TOTAL
1986												
ACRES						BUSHEL						
BERNALILLO	---	---	---	---	---	---	---	---	---	---	---	---
CATRON	50	---	50	---	---	---	---	---	---	---	---	---
CHAVES	2800	---	2800	2600	---	2600	73.0	---	73.0	189800	---	189800
CIBOLA	---	---	---	---	---	---	---	---	---	---	---	---
COLFAX	---	50	50	---	---	---	---	---	---	---	---	---
CURRY	26000	42000	68000	25000	38000	63000	85.0	37.0	56.0	2125000	1406000	3531000
DE BACA	200	---	200	200	---	200	75.0	---	75.0	15000	---	15000
DONA ANA	1200	---	1200	1200	---	1200	100.0	---	100.0	120000	---	120000
EDDY	600	---	600	600	---	600	85.0	---	85.0	51000	---	51000
GRANT	---	---	---	---	---	---	---	---	---	---	---	---
GUADALUPE	---	---	---	---	---	---	---	---	---	---	---	---
HARDING	---	1400	1400	---	1250	1250	---	44.0	44.0	---	55000	55000
HIDALGO	1700	---	1700	1500	---	1500	115.0	---	115.0	172500	---	172500
LEA	3200	1200	4400	3000	1000	4000	40.0	24.0	43.5	150000	24000	174000
LINCOLN	---	---	---	---	---	---	---	---	---	---	---	---
LUNA	3400	---	2400	3000	---	3000	120.0	---	120.0	360000	---	360000
MCKINLEY	---	---	---	---	---	---	---	---	---	---	---	---
MORA	---	---	---	---	---	---	---	---	---	---	---	---
OTERO	50	---	50	---	---	---	---	---	---	---	---	---
QUAY	9000	30000	39000	8000	28000	36000	68.0	28.0	36.9	544000	784000	1328000
RIO ARRIBA	---	---	---	---	---	---	---	---	---	---	---	---
ROOSEVELT	13000	98000	111000	12000	91000	103000	71.0	33.0	37.4	852000	3003000	3855000
SAN JUAN	---	---	---	---	---	---	---	---	---	---	---	---
SAN MIGUEL	50	---	50	---	---	---	---	---	---	---	---	---
SANDOVAL	---	---	---	---	---	---	---	---	---	---	---	---
SANTA FE	---	---	---	---	---	---	---	---	---	---	---	---
SIERRA	---	---	---	---	---	---	---	---	---	---	---	---
SOCORRO	100	---	100	50	---	50	70.0	---	70.0	3500	---	3500
TAOS	---	---	---	---	---	---	---	---	---	---	---	---
TORRANCE	---	---	---	---	---	---	---	---	---	---	---	---
UNION	5000	11000	16000	4000	9600	13600	71.0	20.0	36.4	284000	211200	495200
VALENCIA	---	---	---	---	---	---	---	---	---	---	---	---
STATE	66350	183650	250000	61150	168850	230000	79.6	32.5	45.0	4866800	5483200	10350000
1987												
ACRES						BUSHEL						
BERNALILLO	---	---	---	---	---	---	---	---	---	---	---	---
CATRON	---	---	---	---	---	---	---	---	---	---	---	---
CHAVES	2000	---	2000	1500	---	1500	83.0	---	83.0	124500	---	124500
CIBOLA	---	---	---	---	---	---	---	---	---	---	---	---
COLFAX	---	50	50	---	50	50	---	50.0	50.0	---	2500	2500
CURRY	16000	41500	57500	15000	34000	49000	103.0	44.0	62.1	1545000	1496000	3041000
DE BACA	1400	---	1400	200	---	200	89.0	---	89.0	17800	---	17800
DONA ANA	300	---	300	300	---	300	105.0	---	105.0	31500	---	31500
EDDY	350	---	350	350	---	350	80.0	---	80.0	28000	---	28000
GRANT	---	---	---	---	---	---	---	---	---	---	---	---
GUADALUPE	---	850	850	---	850	850	---	61.0	61.0	---	51850	51850
HARDING	---	200	200	---	---	---	---	---	---	---	---	---
HIDALGO	950	---	950	950	---	950	96.0	---	96.0	91200	---	91200
LEA	2000	200	2200	1950	200	2150	56.0	30.0	53.6	109200	6000	115200
LINCOLN	---	---	---	---	---	---	---	---	---	---	---	---
LUNA	3000	---	3000	3000	---	3000	125.0	---	125.0	375000	---	375000
MCKINLEY	---	---	---	---	---	---	---	---	---	---	---	---
MORA	50	---	50	50	---	50	108.0	---	108.0	5400	---	5400
OTERO	50	---	50	---	---	---	---	---	---	---	---	---
QUAY	8000	12000	20000	6500	8000	14500	68.0	32.0	48.1	442000	256000	698000
RIO ARRIBA	---	---	---	---	---	---	---	---	---	---	---	---
ROOSEVELT	14000	55000	69000	13000	47000	60000	77.0	44.0	51.2	1001000	2068000	3069000
SAN JUAN	---	---	---	---	---	---	---	---	---	---	---	---
SAN MIGUEL	50	---	50	50	---	50	90.0	---	90.0	4500	---	4500
SANDOVAL	---	---	---	---	---	---	---	---	---	---	---	---
SANTA FE	---	---	---	---	---	---	---	---	---	---	---	---
SIERRA	---	---	---	---	---	---	---	---	---	---	---	---
SOCORRO	50	---	50	50	---	50	79.0	---	79.0	3950	---	3950
TAOS	---	---	---	---	---	---	---	---	---	---	---	---
TORRANCE	---	---	---	---	---	---	---	---	---	---	---	---
UNION	2100	4900	7000	2100	4900	7000	78.0	32.0	45.8	163800	156800	320600
VALENCIA	---	---	---	---	---	---	---	---	---	---	---	---
STATE	50300	114700	165000	45000	95000	140000	87.6	42.5	57.0	3942850	4037150	7980000

Barley: Acreage, Production and Value

Year	Acreage		Yield Per	Production	Price	Value
	Planted 1/	Harvested	Harvested Acre		Per Bushel	of Production
	1000 Acres	1000 Acres	Bushels	1000 Bushels	Dollars	1000 Dollars
1978	33	25	57.0	1425	1.95	2779
1979	36	27	58.0	1566	2.40	3758
1980	43	35	62.0	2170	2.55	5534
1981	38	28	67.0	1876	2.81	5272
1982	47	37	66.0	2442	2.40	5861
1983	27	23	75.0	1725	2.80	4830
1984	25	20	75.0	1500	2.78	4170
1985	18	15	70.0	1050	2.24	2352
1986	22	16	65.0	1040	2.05	2132
1987	15	11	70.0	770	1.60	1232

1/ Includes area planted preceding fall.

Barley
Bushels Produced, 1987



Courtesy: NMSU Ag Information

Barley: Acreage, Yield and Production by County

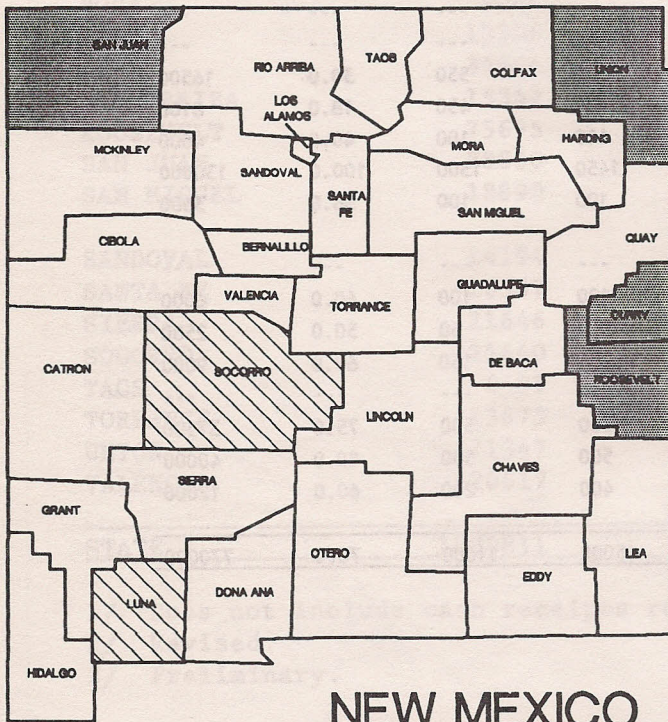
County	-----1986 1/-----				-----1987-----			
	Acreage		Yield Per		Acreage		Yield Per	
	Acreage Planted	Harvested For Grain	Acres	Production Bushels	Acreage Planted	Harvested For Grain	Acres	Production Bushels
BERNALILLO	100	---	---	---	100	---	---	---
CATRON	50	---	---	---	---	---	---	---
CHAVES	2900	1800	50.0	90000	2000	1400	60.0	84000
CIBOLA	100	100	30.0	3000	150	100	35.0	3500
COLFAX	300	---	---	---	100	50	40.0	2000
CURRY	3150	3000	60.0	180000	4200	2900	75.0	217500
DE BACA	50	50	60.0	3000	100	100	70.0	7000
DONA ANA	2500	2350	71.0	166850	1200	1200	80.0	96000
EDDY	1200	300	64.0	19200	500	300	60.0	18000
GRANT	---	---	---	---	---	---	---	---
GUADALUPE	---	---	---	---	---	---	---	---
HARDING	---	---	---	---	500	---	---	---
HIDALGO	250	250	81.0	20250	250	250	70.0	17500
LEA	150	150	30.0	4500	---	---	---	---
LINCOLN	---	---	---	---	---	---	---	---
LUNA	1200	800	84.0	67200	750	700	79.0	55300
MCKINLEY	---	---	---	---	---	---	---	---
MORA	50	---	---	---	---	---	---	---
OTERO	50	---	---	---	100	---	---	---
QUAY	1300	1300	30.0	39000	600	550	30.0	16500
RIO ARRIBA	500	300	21.0	6300	500	450	18.0	8100
ROOSEVELT	400	150	30.0	4500	100	100	40.0	4000
SAN JUAN	5400	4150	83.0	344450	1450	1300	100.0	130000
SAN MIGUEL	50	---	---	---	100	100	36.0	3600
SANDOVAL	---	---	---	---	---	---	---	---
SANTA FE	---	---	---	---	100	100	60.0	6000
SIERRA	50	50	50.0	2500	50	50	50.0	2500
SOCORRO	250	150	60.0	9000	250	150	60.0	9000
TAOS	500	---	---	---	500	---	---	---
TORRANCE	350	250	75.0	18750	500	500	75.0	37500
UNION	750	700	75.0	52500	500	500	80.0	40000
VALENCIA	400	150	60.0	9000	400	200	60.0	12000
STATE	22000	16000	65.0	1040000	15000	11000	70.0	770000

1/ Revised.

Corn: Acreage, Production and Value

Crop Year	Planted For All Purposes	Harvested for Grain				Harvested for Silage			
		Acreage	Yield	Production	Price Per Bushel	Value of Production	Acreage	Yield	Production
		1000 Acres	1000 Bushels	1000 Bushels	Dollars	1000 Dollars	1000 Acres	1000 Tons	1000 Tons
1978	105	72	106.0	7632	2.39	18240	29	15.0	435
1979	106	74	114.0	8436	2.81	23705	28	17.5	490
1980	105	75	90.0	6750	3.60	24300	26	14.0	364
1981	85	65	128.0	8320	2.84	23629	18	23.0	414
1982	90	65	125.0	8125	2.91	23644	23	22.0	506
1983	70	50	140.0	7000	3.36	23520	18	22.0	396
1984	87	63	150.0	9450	2.97	28067	20	24.0	480
1985	92	65	155.0	10075	2.67	26900	25	23.0	575
1986	80	55	150.0	8250	1.85	15263	22	20.0	440
1987	68	49	155.0	7595	1.90	14431	16	20.0	320

Corn Bushels Produced, 1987



NEW MEXICO

- Less than 100,000
- 100,000 - 299,999
- 300,000 - 999,999
- 1,000,000 +

5 Leading Counties	
Curry	2,828,000
Union	1,406,000
San Juan	1,272,700
Roosevelt	1,280,000
Socorro	207,000



Courtesy: Linda G. Harris, New Mexico Water Resources Institute

Corn: Acreage, Yield and Production by County

County	-----1986-----				-----1987-----			
	Acreage		Yield Per Acre	Production	Acreage		Yield Per Acre	Production
	Acreage Planted	Harvested For Grain			Acreage Planted	Harvested For Grain		
	-----Acres-----		-----Bushels-----		-----Acres-----		-----Bushels-----	
BERNALILLO	1000	800	65.6	52500	500	200	66.0	13200
CATRON	100	---	---	---	50	50	70.0	3500
CHAVES	4200	100	100.0	10000	2650	50	90.0	4500
CIBOLA	100	100	77.5	7750	300	150	38.3	5750
COLFAX	50	50	94.0	4700	50	50	60.0	3000
CURRY	22000	20500	177.0	3628500	17800	15700	180.0	2826000
DE BACA	---	---	---	---	---	---	---	---
DONA ANA	2500	---	---	---	3000	50	95.0	4750
EDDY	50	---	---	---	---	---	---	---
GRANT	100	50	80.0	4000	50	50	85.0	4250
GUADALUPE	---	---	---	---	50	50	70.0	3500
HARDING	---	---	---	---	---	---	---	---
HIDALGO	1000	1000	145.0	145000	800	800	115.0	92000
LEA	800	400	130.0	52000	650	350	143.0	50050
LINCOLN	---	---	---	---	---	---	---	---
LUNA	950	800	136.0	108800	900	800	143.0	114400
MCKINLEY	1100	800	37.5	30000	950	750	22.0	16500
MORA	50	50	65.0	3250	---	---	---	---
OTERO	50	---	---	---	50	---	---	---
QUAY	900	800	142.0	113600	850	700	130.0	91000
RIO ARRIBA	150	---	---	---	150	100	22.5	2250
ROOSEVELT	10900	8700	145.0	1261500	10000	9000	140.0	1260000
SAN JUAN	10400	8950	139.4	1247500	10400	8900	143.0	1272700
SAN MIGUEL	350	150	63.0	9450	350	350	40.4	14150
SANDOVAL	300	---	---	---	600	600	40.0	24000
SANTA FE	4900	1500	149.0	223500	3150	600	140.0	84000
SIERRA	900	---	---	---	450	---	---	---
SOCORRO	3400	2300	125.0	287500	2000	1500	138.0	207000
TAOS	50	---	---	---	50	---	---	---
TORRANCE	3200	450	119.0	53550	2800	500	140.0	70000
UNION	8500	7400	135.0	999000	7400	7400	190.0	1406000
VALENCIA	2000	100	79.0	7900	2000	300	75.0	22500
STATE	80000	55000	150.0	8250000	68000	49000	155.0	7595000

1/ Includes irrigated and non-irrigated acreage.

Upland Cotton: Acreage, Production and Value

Crop Year	Acreage		Yield Per Harvested Acre	Production (480 Lb. Net Weight Bales)	Price Per Pound	Value of Production
	Planted	Harvested				
	1000 Acres	1000 Acres	Net Pounds	1000 Bales	Cents	1000 Dollars
1978	137.0	109.0	443	101.0	62.00	30058
1979	154.0	126.0	396	104.0	68.50	34195
1980	151.0	120.0	428	107.0	81.00	41602
1981	136.0	106.0	602	133.0	60.00	38304
1982	79.0	68.0	551	78.0	59.70	22352
1983	56.0	47.0	715	70.0	73.90	24830
1984	77.0	69.0	605	87.0	59.80	24972
1985	70.0	54.0	631	71.0	57.60	19630
1986	63.0	50.0	595	62.0	56.00 1/	16666 1/
1987	66.0	62.0	689	89.0	66.50 2/	28409 2/

1/ Includes allowance for unredeemed loans.

2/ Average to April 1, 1988 with no allowance for unredeemed loans.

Upland Cotton: Acreage, Yield and Production by County

County	Acres				Yield Per Harvested Acre		Production (480 Pound Net Weight Bales)	
	Planted		Harvested		Acres		Bales	
	1986	1987	1986	1987	1986	1987	1986	1987
CHAVES	10600	12200	9500	12000	556	816	11000	20400
CURRY	2300	2300	2000	2000	360	594	1500	2475
DONA ANA	7100	7600	7100	7600	798	897	11800	14200
EDDY	8100	9300	7000	8800	761	791	11100	14500
HIDALGO	4400	4300	4400	4300	676	647	6200	5800
LEA	6850	6300	6150	6200	284	538	3635	6950
LUNA	6750	8800	6700	8400	870	714	12150	12500
OTERO	250	400	250	400	768	840	400	700
QUAY	1100	700	700	700	274	583	400	850
ROOSEVELT	15500	14000	6150	11500	293	438	3750	10500
SIERRA	50	100	50	100	624	600	65	125
STATE	63000	66000	50000	62000	595	689	62000	89000



Courtesy: NMDA

Cottonseed: Production, Farm Disposition and Value

Crop Year	Production	Farm Disposition		Season Average Price Per Ton	Value of Production
		Sold To Oil Mills	Other 1/		
-----1000 Tons-----			Dollars	1000 Dollars	
1978	44.0	40.0	4.0	125.00	5500
1979	44.0	40.0	4.0	115.00	5060
1980	45.0	40.0	5.0	124.00	5580
1981	66.0	57.0	9.0	87.00	5742
1982	39.5	20.3	19.2	82.00	3239
1983	34.3	31.7	2.6	168.00	5762
1984	40.0	32.0	8.0	102.00	4080
1985	31.3	20.0	11.3	61.00	1909
1986	30.5	21.7	8.8	95.00	2898
1987	42.3	14.5	27.8	97.00	4103

1/ Includes planting seed, exports, interfarm sales, shrinkage, losses and other uses.

American-Pima Cotton: Acreage, Production, Price and Value

Crop Year	Acreage		Yield Per Harvested Acre	Production (480 Lb. Net Weight Bales)	Price Per Pound	Value of Production
	Planted	Harvested				
	1000 Acres	1000 Acres	Net Pounds	1000 Bales	Cents	1000 Dollars
1978	14.1	13.7	454	13.0	90.00	5616
1979	16.0	14.8	246	7.5	101.00	3636
1980	7.1	7.0	464	6.8	105.00	3427
1981	7.1	6.8	558	7.9	103.00	3906
1982	9.5	9.4	511	10.0	102.00	4896
1983	11.1	11.1	683	15.8	114.00	8646
1984	10.0	10.0	595	12.4	98.60	5869
1985	8.0	7.9	687	11.3	98.80	5359
1986	11.1	11.1	718	16.6	90.40 1/	7203 1/
1987	14.0	13.9	642	18.6	106.00 2/	9464 2/

1/ Includes allowance for unredeemed loans.

2/ Average to April 1, 1988 with no allowance for unredeemed loans.

American-Pima Cotton: Acreage, Yield and Production by County

County	Acres		Yield Per Harvested Acre	Production (480 Pound Net Weight Bales)
	Planted	Harvested		
	1986	1987	1986	1987
DONA ANA	9650	12600	765	672
LUNA	1250	800	403	405
OTHER COUNTIES ^{1/}	200	600	396	269
STATE	11100	14000	718	642

1/ Includes Eddy, Hidalgo, Chaves, and Sierra Counties.

Irish Potatoes: Acreage, Yield, Production, Price and Value

Crop Year	Acreage		Yield Per Harvested Acre	Production	Price Per Cwt.	Value of Production
	Planted	Harvested				
	1000 Acres	1000 Acres	Cwt.	1000 Cwt.	Dollars	1000 Dollars
1978	3.8	3.8	205	779	5.00	3895
1979	4.5	4.4	275	1210	3.25	3933
1980	3.5	3.0	180	540	6.85	3699
1981	4.5	4.5	210	945	6.50	6143
1982	5.0	4.9	260	1274	5.25	6689
1983	5.7	5.7	285	1625	6.40	10400
1984	9.3	9.1	290	2639	6.80	17945
1985	10.5	10.4	275	2860	4.70	13442
1986	9.2	9.0	310	2790	5.00	13950
1987	10.5	10.0	350	3500	4.15	14525

Irish Potatoes: Acreage, Yield and Production by County

County	Acreage				Yield Per Harvested		Production 1/	
	Planted		Harvested		Acre			
	Acres		Acres		Cwt.		Cwt.	
	1986	1987	1986	1987	1986	1987	1986	1987
CURRY	2400	1910	2350	1850	285	300	669750	555000
ROOSEVELT	3100	3420	3100	3160	290	320	899000	1011200
SAN JUAN	2060	3370	2060	3370	400	425	824000	1432250
TORRANCE	980	1160	950	1120	250	290	237500	324800
OTHER COUNTIES	660	640	540	500	300	350	162000	176750
STATE	9200	10500	9000	10000	310	350	2790000	3500000

1/ May not sum due to rounding.

Peanuts: Acreage, Yield, Production, Price and Value

Crop Year	Acreage Harvested	Yield Per Acre	Production	Price Per Pound	Value of Production
	<u>Acres</u>	<u>Pounds</u>	<u>1000 Pounds</u>	<u>Cents</u>	<u>1000 Dollars</u>
1978	9400	2560	24064	22.0	5294
1979	9200	2750	25300	22.6	5718
1980	8800	2540	22352	28.0	6259
1981	10000	2490	24900	27.0	6723
1982	10400	2425	25220	30.2	7616
1983	11000	2330	25630	29.2	7484
1984	14500	2220	32190	29.0	9335
1985	12400	2580	31992	29.3	9374
1986	12700	2260	28700	36.5	10476
1987	12400	2700	33480	31.0	10379

Peanuts: Acreage, Yield and Production by County

County	-----1986-----			-----1987-----		
	Acreage Harvested	Yield Per Acre	Production	Acreage Harvested	Yield Per Acre	Production
	<u>Acres</u>	<u>Pounds</u>	<u>Pounds</u>	<u>Acres</u>	<u>Pounds</u>	<u>Pounds</u>
CURRY	250	2380	595000	450	2932	1319500
LEA	1250	1920	2400000	1100	2605	2865500
ROOSEVELT	11200	2295	25705000	10850	2700	29295000
STATE	12700	2260	28700000	12400	2700	33480000

Government Program Payments

Wheat, Feed Grain and Cotton Payments

County	Deficiency Payments	Paid Land Diversion	Deferred Yield Adjustments	Diverted Yield Adjustments	Total 1/
-----Dollars-----					
BERNALILLO	1,043	---	---	---	1,043
CHAVES	2,033,665	10,391	184,695	---	2,228,751
COLFAX	---	---	---	---	109,921
CURRY	11,297,737	2,141,293	156,101	18,305	13,613,436
DE BACA	---	---	---	---	314,809
DONA ANA	---	---	---	---	1,514,310
EDDY	---	---	---	---	1,471,357
GUADALUPE	8,924	---	---	---	8,924
HARDING	103,516	24,847	3,589	---	131,952
HIDALGO	---	---	---	---	1,074,395
LEA	1,234,144	112,720	21,362	1,059	1,369,285
LUNA	2,086,287	231,735	65,505	1,166	2,384,693
OTERO	---	---	---	---	44,056
QUAY	2,782,547	438,546	53,683	2,197	3,276,973
RIO ARRIBA	---	---	---	---	49,816
ROOSEVELT	6,368,639	842,503	163,068	10,631	7,384,841
SAN JUAN	1,108,546	793,660	129,976	83,563	2,115,745
SANTA FE	233,972	79,396	46,018	18,176	377,562
SIERRA	65,039	---	1,367	---	66,406
SOCORRO	---	---	---	---	10,763
TAOS	16,171	---	---	---	16,171
TORRANCE	240,551	103,033	36,848	21,365	401,797
UNION	1,892,287	309,485	163,019	17,855	2,382,646
TOTALS	29,473,068	5,087,609	1,025,231	174,317	40,349,652

1/ In some counties, only totals are shown so that individual operations would not be disclosed, thus column totals will not add to state total. Source: New Mexico Agricultural Stabilization and Conservation Service, USDA.

CRP Signups: 1 through 6

Number of Contracts (number)	Average Rental Payment (dollars)	Total Acres Under Contract (acres)	Total Annual Rental Pay- ment (dollars)	Acres Still Available For Signup (acres)
1,432	37.74	459,458	17,341,661	233,661

Percent of Total Cropland in CRP- 18.38

Source: New Mexico Agricultural Stabilization and Conservation Service, USDA.

Fruits, Nuts and Vegetables

In 1987, New Mexico apple producers had their best production year since 1981. Apple growers produced 12.6 million pounds of the fruit in 1987, an increase of 6.6 million pounds, or 110 percent greater than in 1986. The price received by apple producers averaged 14.6 cents per pound, or \$5.84 per bushel. This compares with \$7.60 per bushel received for the 1986 apple crop. Value of the 1987 crop increased to \$1,840,000.

Apples: Production, Price and Value

Crop Year	Utilized Production	Price Per Pound	Value of Production
	1000 Pounds	Cents	1000 Dollars
1978	17000	9.7	1649
1979	14000	13.0	1820
1980	12000	12.4	1488
1981	17000	12.6	2142
1982	12000	12.4	1488
1983	6000	14.4	864
1984	8000	17.5	1400
1985	10000	13.4	1340
1986	6000	19.0	1140
1987	12600	14.6	1840

Apples: Utilized Production by County

County	1985 Survey 1/ Trees	Utilized Production					
		1982	1983	1984	1985	1986	1987
	<u>Number</u>	-----1000 Pounds-----					
BERNALILLO, VALENCIA, CIBOLA	8590	800	400	550	650	250	630
CHAVES, DONA ANA, OTERO	40110	1500	750	1000	1250	1160	3054
GRANT, SIERRA	16080	2500	1200	1650	2000	660	1192
LINCOLN, TORRANCE	19980	300	100	200	200	960	1481
RIO ARRIBA	44900	3200	1700	2250	2850	1700	3328
SAN JUAN	9700	900	550	600	900	490	719
SANDOVAL	17690	2200	1000	1350	1650	590	1311
SANTA FE	11940	600	300	400	500	190	885
STATE	168990	12000	6000	8000	10000	6000	12600

1/ Orchards of 100 or more trees.

Pecans: Production, Price and Value



Courtesy: Linda G. Harris, New Mexico Water Resources Research Institute

Crop Year	Production (in shell)	Price Per	Value of
		Pound	Production
	1000 Pounds	Cents	1000 Dollars
1978	15000	75.0	11250
1979	14700	69.0	10143
1980	14700	88.0	12936
1981	20000	86.0	17200
1982	25000	83.0	20750
1983	29000	73.0	21170
1984	24000	83.0	19920
1985	29000	88.0	25520
1986	27000	91.0	24570
1987	25000	65.0	16250

The 1987 New Mexico pecan crop was estimated at 25 million pounds in shell basis, the lowest output from orchards since 1984. Orchards came through the winter and early spring in very good condition, but just as the trees were leafing out, they were hit by a late spring freeze, which apparently did extensive damage. Producers remained optimistic about the crop through December, but as harvest began, difficulties were encountered with poor nut fill, "sticktights" and other problems.

Prices received for the 1987 crop were also low, averaging 65 cents per pound, in shell, or almost 29 percent lower than prices received for the 1986 crop. This was the lowest price received for New Mexico pecans in the last ten years. The value of production for the 1987 crop was estimated to be 16,250 million dollars, nearly 34 percent lower than the value of production of the 1986 crop.

Pecans: Orchards, Acres, Trees and Production

County	1985 Survey 1/			Production	
	Acres	Orchards	Trees	1986	1987
	-----Number-----			---1000 Pounds---	
CHAVES	2429	37	124260	2938	2720
DONA ANA	13944	312	810540	19163	17744
EDDY	971	46	46740	1105	1023
LEA	940	36	45600	1078	998
LUNA	967	24	50160	1186	1098
OTERO	1069	40	49020	1159	1073
SIERRA	154	8	7980	189	175
OTHER COUNTIES	162	16	7700	182	169
STATE	20636	519	1142000	27000	25000

1/ Orchards of 20 or more trees.



Courtesy: Jeanne Croft

Lettuce, a cool season crop, is produced in New Mexico in the spring and fall. Spring lettuce production for 1987 was 399 thousand hundredweight, 8 percent less than the previous year's level, while fall production totaled 384 thousand hundredweight, 31 percent above the production level of 1986. The average spring price per hundredweight was 6.51 dollars while the average fall price was 16.07 dollars. The combined spring and fall value was 8.8 million dollars, 13 percent less than the value of the 1986 spring and fall crops.

Lettuce: Monthly Prices Received

Year	Apr.	May	June	July	Aug.	Sept.	Oct.	Nov.
-----Dollars Per 100 Pounds-----								
1982	10.60	12.50	10.90	---	---	---	8.54	12.40
1983	---	18.90	14.30	---	---	---	18.00	11.60
1984	---	6.40	---	---	---	---	21.80	9.00
1985	17.00	8.70	6.30	---	---	10.00	8.50	11.00
1986	---	12.00	18.00	---	---	7.00	6.40	13.50
1987	---	6.70	6.50	---	---	10.00	11.90	30.00

Spring Lettuce: Acreage, Production and Value

Crop Year	Acreage		Yield Per	Production	Price	Value
	Planted	Harvested	Harvested Acre		Per Cwt.	of Production
	Acres	Acres	Cwt.	1000 Cwt.	Dollars	1000 Dollars
1978	1400	1300	270	351	15.50	5441
1979	1500	1000	150	150	7.66	1149
1980	700	700	180	126	12.00	1512
1981	850	610	250	153	11.90	1821
1982	1500	1500	335	503	12.40	6237
1983	2600	2300	310	713	18.10	12905
1984	3000	1900	140	266	6.40	1702
1985 1/	2000	1600	220	352	8.60	3027
1986	1700	1500	288	432	17.22	7439
1987	1800	1700	235	399	6.51	2600

1/ Revised.

Fall Lettuce: Acreage, Production and Value

Crop Year	Acreage		Yield Per	Production	Price	Value
	Planted	Harvested	Harvested		Per	of
	Acres	Acres	Acre	Cwt.	Production	
1978	4700	3700	190	703	7.96	5596
1979	3300	3200	200	640	9.11	5830
1980	3200	2800	185	518	9.90	5128
1981	3500	2800	210	588	9.99	5874
1982	3500	3300	230	759	9.93	7537
1983	3200	3000	205	615	15.40	9471
1984	3000	1400	220	308	12.00	3696
1985	2400	1600	185	300	9.10	2720
1986	1900	1400	209	293	9.02	2643
1987	1500	1200	320	384	16.07	6170

Spring Lettuce: Acreage, Yield and Production by County

County	Acreage				Yield Per		Production	
	Planted		Harvested		Harvested			
	Acres	Acres	Acres	Acres	Acres	Cwt.	Cwt.	Cwt.
	<u>1986</u>	<u>1987</u>	<u>1986</u>	<u>1987</u>	<u>1986</u>	<u>1987</u>	<u>1986</u>	<u>1987</u>
DONA ANA	1420	1600	1290	1540	288	235	371520	362000
LUNA, SIERRA	280	200	210	160	288	235	60480	37000
STATE	1700	1800	1500	1700	288	235	432000	399000

Fall Lettuce: Acreage, Yield and Production by County

County	Acreage				Yield Per		Production	
	Planted		Harvested		Harvested			
	Acres	Acres	Acres	Acres	Acres	Cwt.	Cwt.	Cwt.
	<u>1986</u>	<u>1987</u>	<u>1986</u>	<u>1987</u>	<u>1986</u>	<u>1987</u>	<u>1986</u>	<u>1987</u>
DONA ANA	1600	1200	1200	1000	209	320	250800	320000
LUNA, SIERRA	300	300	200	200	209	320	41800	64000
STATE	1900	1500	1400	1200	209	320	292600	384000

Onions: Monthly Prices Received

The major varieties of commercially grown onions in New Mexico include Grano, Granex, Sweet Spanish and Mid-Summer Hybrids. Most of the onions produced in New Mexico are non-storage types, although some acreage in the state is devoted to the production of storage onions. Harvest usually begins in late May and continues through September. New Mexico onion production in 1987 was 2,104 thousand hundredweight, up 16.2 percent from the previous year's production of 1,810 thousand hundredweight. The total value of production was 31 million dollars, an increase of 78 percent over 1986's level, and a record high. The majority of the acreage devoted to onion production was located in Dona Ana, Luna and San Juan counties. These counties accounted for almost 88 percent of the harvested acreage.

Year	June	July	Aug.	Sept.
-----Dollars Per 100 Pounds-----				
1978	7.40	9.50	9.90	7.30
1979	13.20	12.80	7.20	---
1980	9.00	9.00	9.80	---
1981	15.10	17.90	15.90	---
1982	7.57	9.12	10.20	7.60
1983	7.70	9.30	9.50	8.50
1984	10.30	13.60	12.00	10.30
1985	9.60	21.50	9.80	7.50
1986	10.00	9.30	7.80	---
1987	18.60	17.40	9.30	9.70

Onions: Acreage, Yield, Production and Value

Crop Year	Acreage		Yield Per Harvested	Production	Price Per	Value of
	Planted	Harvested	Acre		Cwt.	Production
	Acres	Acres	Cwt.	1000 Cwt.	Dollars	1000 Dollars
1978	4300	3700	320	1184	8.54	10111
1979	3500	3200	300	960	11.10	10656
1980	4000	3900	290	1131	9.20	10405
1981	3600	3600	345	1242	16.20	20120
1982	4600	4500	365	1643	8.69	14278
1983	4400	3900	320	1248	8.90	11107
1984	4100	3900	350	1365	11.80	16107
1985	4700	4500	325	1463	12.90	18873
1986	5100	4700	385	1810	9.53	17245
1987	5600	5400	390	2106	14.60	30748

Onions: Acreage, Yield and Production by County

County	Acreage				Yield Per Harvested Acre		Production	
	Planted		Harvested		Acre		Cwt.	
	1986	1987	1986	1987	1986	1987	1986	1987
DONA ANA	3230	3120	3090	3050	400	420	1236000	1281000
LUNA	1080	1000	970	960	360	360	349200	345600
SAN JUAN	1/	740	1/	740	1/	340	1/	251600
SIERRA	90	150	70	150	340	420	23800	63000
OTHER COUNTIES	700	590	570	500	350	330	200000	164800
STATE	5100	5600	4700	5400	385	390	1810000	2106000

1/ Data not available until 1987.



Courtesy: Jeanne Croft

Chile: Acreage, Yield, Production and Value

Year	Acreage Harvested	Yield Per Acre Dry Weight Equivalent 1/	Total Production Dry Weight Equivalent	Average Price Per Ton 2/	Total Value
	Acres	Tons	Tons	Dollars	1000 Dollars
1979	15100	1.20	18100	1010.00	18281
1980	17200	1.36	23400	1125.00	26325
1981	15300	1.60	24500	1340.00	32830
1982	14600	1.70	24800	1204.00	29859
1983	17200	1.60	27500	1210.00	33275
1984	17000	1.60	27200	1100.00	29920
1985	19300	1.55	29900	1125.00	33638
1986	22100	1.60	35360	1054.00	37269
1987	23400	1.58	36972	1060.00	39190

1/ A 5:1 ratio was used to convert green tonnage to a dry weight equivalent for long hot and mild varieties; an 8:1 ratio was used to convert jalapeno green tonnage to a dry weight equivalent.

2/ Average price include prices received by growers for all types of sales.



Courtesy: NMDA

Production from the 1987 chile crop set a new record high at 36,972 dry equivalent tons. The previous record was made in 1986 with 35,360 dry equivalent tons. This increase in production is attributed to a 6 percent increase in harvested acreage from the previous year. Acreage in the state is estimated at 23,400 acres. The value of production also set a record high at 39.2 million dollars. The average price received by farmers increased 6 dollars per dry equivalent ton to 1,060 dollars. Yield per acre decreased slightly from last year to 1.58 dry equivalent tons. The amount of processed green chile increased 5,350 tons over 1986 to 43,230 tons. Processed red chile tonnage increased to 21,260 tons. Of the total processed green tonnage, 79 percent was of mild varieties. Of the total processed red tonnage, 80 percent was of mild varieties.

Chile, Processed Tons, Price and Value 1/

Year	All Varieties								Total Value 1000
	Mild Varieties 2/		Hot and Miscellaneous Varieties 3/		Total		Average Price Per Ton		
	Green	Red	Green	Red	Green	Red	Green	Red	
	-----Tons-----				-----Dollars-----				
1978		9050		660		9710		740	7185
1979	19220	8580	1280	440	20500	9020	177	789	10745
1980	27000	12200	3400	900	30400	13100	228	842	17961
1981	23000	11900	7300	1500	30300	13400	237	1083	21693
1982	28000	9900	5200	2300	33200	12200	229	896	18534
1983	27200	9500	7000	2800	34200	12300	230	850	18321
1984	25100	12500	4700	1700	29800	14200	235	884	19556
1985	29500	11000	5800	4100	35300	15100	246	855	21594
1986	31400	16140	6480	2670	37880	18810	243	858	25344
1987	34050	16930	9180	4330	43230	21260	245	875	29194

1/ Estimates based on processor reports; includes chile processed out of state. 1976-1978 peppers for drying only; 1979-1987 includes all processed chile.

2/ For 1987, mild red varieties include 2,675 tons of paprika.

3/ For 1987, hot red varieties include an estimated 2,460 tons of cayenne peppers; hot green varieties include a limited amount of "yellow hot" and approximately 8,680 tons of jalapenos.

Chile: Acreage by County

County	1981	1982	1983	1984	1985	1986	1987
-----Acres-----							
BERNALILLO	500	550	650	650	700	700	600
CHAVES	1200	700	700	1000	750	980	1000
DONA ANA	7700	7700	8200	8300	8300	9300	9800
EDDY	800	800	1600	250	370	550	645
HIDALGO	150	10	70	130	240	470	580
LUNA	920	1300	2100	2650	4400	5700	5900
RIO ARRIBA	260	200	250	250	250	240	275
SANDOVAL	300	400	500	550	550	550	550
SIERRA	2500	2200	2380	2500	2700	2700	3000
SOCORRO	300	300	300	300	500	500	500
OTHER COUNTIES	670	440	450	420	540	410	550
STATE	15300	14600	17200	17000	19300	22100	23400

Chile, Processed Tons, Price and Value 1/

Year	All Varieties								Total Value 1000
	Mild Varieties 2/		Hot and Miscellaneous Varieties 3/		Total		Average Price Per Ton		
	Green	Red	Green	Red	Green	Red	Green	Red	
	-----Tons-----				-----Dollars-----				
1978		9050		660		9710		740	7185
1979	19220	8580	1280	440	20500	9020	177	789	10745
1980	27000	12200	3400	900	30400	13100	228	842	17961
1981	23000	11900	7300	1500	30300	13400	237	1083	21693
1982	28000	9900	5200	2300	33200	12200	229	896	18534
1983	27200	9500	7000	2800	34200	12300	230	850	18321
1984	25100	12500	4700	1700	29800	14200	235	884	19556
1985	29500	11000	5800	4100	35300	15100	246	855	21594
1986	31400	16140	6480	2670	37880	18810	243	858	25344
1987	34050	16930	9180	4330	43230	21260	245	875	29194

1/ Estimates based on processor reports; includes chile processed out of state. 1976-1978 peppers for drying only; 1979-1987 includes all processed chile.

2/ For 1987, mild red varieties include 2,675 tons of paprika.

3/ For 1987, hot red varieties include an estimated 2,460 tons of cayenne peppers; hot green varieties include a limited amount of "yellow hot" and approximately 8,680 tons of jalapenos.

Chile: Acreage by County

County	1981	1982	1983	1984	1985	1986	1987
-----Acres-----							
BERNALILLO	500	550	650	650	700	700	600
CHAVES	1200	700	700	1000	750	980	1000
DONA ANA	7700	7700	8200	8300	8300	9300	9800
EDDY	800	800	1600	250	370	550	645
HIDALGO	150	10	70	130	240	470	580
LUNA	920	1300	2100	2650	4400	5700	5900
RIO ARRIBA	260	200	250	250	250	240	275
SANDOVAL	300	400	500	550	550	550	550
SIERRA	2500	2200	2380	2500	2700	2700	3000
SOCORRO	300	300	300	300	500	500	500
OTHER COUNTIES	670	440	450	420	540	410	550
STATE	15300	14600	17200	17000	19300	22100	23400