

NEW MEXICO DEPARTMENT OF AGRICULTURE

New Mexico State University
Las Cruces, New Mexico 88001
DALLAS RIERSON, Director

COOPERATING WITH
UNITED STATES DEPARTMENT OF AGRICULTURE
Statistical Reporting Service

COMPILED BY
NEW MEXICO CROP AND LIVESTOCK
REPORTING SERVICE

Joe D. Herman-Agricultural Statistician in Charge
Larry Losleben-Agricultural Statistician
Dale Hopkins-Agricultural Statistician
Ronald Sitzman-Agricultural Statistician
David Williams-Agricultural Statistician
Gustav J. Meier Jr.-Agricultural Statistician
Hazel M. Hobbs-Supervisory Statistical Assistant
Statistical Clerical Staff

1480 North Main

P. O. Drawer 580
Las Cruces, New Mexico 88001

New Mexico Agricultural Statistics

TABLE OF CONTENTS

	Pages
FOREWARD	2
CLIMATE OF NEW MEXICO	3
PLANTING AND HARVESTING DATES	4
CROP SUMMARY	5
PRINCIPAL CROPS	6
FARM INCOME TABLES	7
LIVESTOCK SUMMARY	32
NEW MEXICO OUTSHIPMENTS AND INSHIPMENTS OF CATTLE	40-41
PRICES RECEIVED	44
STATE TABLES	
GRAIN AND HAY STOCKS	8
LIVESTOCK	33
COUNTY ESTIMATES	
COTTON	10-13
GRAINS	14-21
Barley.....	14-15
Corn.....	16-17
Sorghum.....	18-19
Wheat.....	20-21
MISCELLANEOUS CROPS	22-27
Hays.....	22-23
Alfalfa Seed.....	23
Broomcorn.....	24
Potatoes.....	25
Sweetpotatoes.....	25
Peanuts.....	25
Dry Beans.....	26-27
VEGETABLES	28-29
Lettuce.....	28
Tomatoes for Processing.....	28
Onions.....	29
FRUITS	29
Apples.....	29
LIVESTOCK	31-39
Cattle.....	42-43
Milk Cows.....	42-43
Hogs.....	42-43
Sheep.....	42-43
Chickens.....	42-43
Cattle and Sheep on Feed.....	44
VALUE OF CROP PRODUCTION AND LIVESTOCK INVENTORY VALUE	
Individual and Total Value of Principal Crops.....	46-49
Livestock Inventory Values by Species.....	50-51



NEW MEXICO STATE UNIVERSITY

BOX 3189, LAS CRUCES, NEW MEXICO 88001
NEW MEXICO DEPARTMENT OF AGRICULTURE, AREA 505 646-3007

Office of the Director

FOREWARD

New Mexico agriculture is faced with keeping in step with new requirements and needs of the consumer. In addition, allied industries must keep pace with changes in agriculture to meet its needs in order to adequately provide food and fiber to the people of this country and the world.

To assist all concerned, we take pride in presenting Volume VI, Supplement 3 of New Mexico Agricultural Statistics bringing up to date agricultural production by counties and production values of the major crops of New Mexico.

This work is a cooperative program of the New Mexico Department of Agriculture and the Statistical Reporting Service of the United States Department of Agriculture.

Dallas Rierson

Dallas Rierson
Director

CLIMATE OF NEW MEXICO
AVERAGE FIRST FALL AND LAST SPRING DATE OF 32°, DAYS BETWEEN DATES, RECORD AVERAGE, PRECIPITATION, 1968-69

County and Station	Freeze data years of record	Average first date of 32 degrees	Average last spring date of 32 degrees	Average number of days between dates	Precipitation (in inches)		
					Average 1931-1960 or * for period of record through 1968	1968	1969
Bernalillo Albuquerque Airport	30	Oct. 31	Apr. 13	201	8.13	10.67	10.56
Sandoval Jemez Springs	58	Oct. 21	May 1	173	17.68	14.99	22.93
San Juan Shiprock	39	Oct. 13	May 1	165	* 6.72	4.68	12.93
Aztec Ruins Natl. Monument	57	Oct. 10	May 11	152	9.82	9.07	11.47
Santa Fe Santa Fe	93	Oct. 14	May 6	161	13.76	15.19	19.56
Taos Taos	68	Oct. 3	May 17	139	12.08	13.82	14.82
Valencia Los Lunas	69	Oct. 18	Apr. 24	177	* 7.90	8.43	10.31
San Fidel	43	Oct. 13	May 7	159	* 9.56	7.83	10.16
Colfax Raton	16	Oct. 8	May 10	152	*16.34	12.64	21.28
Springer	73	Oct. 5	May 8	150	15.59	10.65	23.19
Curry Clovis	56	Oct. 28	Apr. 15	196	17.48	12.72	24.30
Melrose	27	Oct. 23	Apr. 19	187	15.13	13.31	20.79
De Baca Ft. Sumner	57	Oct. 23	Apr. 18	188	13.74	12.64	18.71
Alamogordo Dam	31	Oct. 29	Apr. 15	197	*12.36	14.73	18.03
Guadalupe Santa Rosa	59	Oct. 25	Apr. 17	191	13.92	14.55	21.90
Quay Tucumcari	64	Oct. 27	Apr. 15	195	15.07	10.44	22.10
San Jon	62	Oct. 25	Apr. 22	186	15.18	12.65	26.28
Roosevelt Portales	57	Oct. 19	Apr. 23	179	16.94	10.56	22.44
Elida	29	Oct. 26	Apr. 17	192	15.09	11.37	17.97
San Miguel Las Vegas Airport	29	Oct. 9	May 12	150	*15.07	13.63	21.61
Bell Ranch	65	Oct. 22	Apr. 21	184	14.52	8.84	22.83
Torrance Estancia	49	Oct. 1	May 20	134	*11.82	9.05	17.79
Union Clayton	63	Oct. 20	Apr. 27	176	14.51	10.69	25.70
Des Moines	53	Oct. 4	May 14	143	17.91	14.14	24.43
Catron Quemado	39	Sept. 24	June 8	108	10.40	10.34	13.27
Grant Ft. Bayard	71	Oct. 24	Apr. 28	179	14.41	16.35	14.31
Hachita	51	Nov. 3	Apr. 14	203	9.54	11.23	6.51
Hidalgo Lordsburg	42	Nov. 5	Apr. 5	214	10.10	12.20	11.13
Animas	41	Oct. 28	Apr. 24	187	9.99	9.98	8.25
Luna Deming Airport	8	Oct. 29	Apr. 24	188	* 8.34	10.44	7.88
Sierra Caballo Dam	33	Nov. 4	Apr. 6	212	* 8.40	7.49	7.50
Winston	23	Oct. 8	May 14	147	12.14	8.17	15.84
Hillsboro	27	Oct. 27	Apr. 17	193	10.98	10.31	13.49
Socorro Socorro	73	Oct. 24	Apr. 12	195	8.75	11.48	8.34
Agustine	38	Sept. 26	May 30	119	10.51	13.37	9.70
Chaves Roswell	76	Oct. 29	Apr. 8	204	11.62	15.84	13.33
Elk	58	Oct. 16	Apr. 30	169	15.84	20.80	18.89
Dona Ana State University	78	Oct. 28	Apr. 9	202	8.01	13.17	11.91
Hatch	56	Oct. 24	Apr. 11	196	8.94	8.31	7.82
Eddy Carlsbad	73	Nov. 5	Apr. 2	217	12.45	15.30	12.40
Artesia	61	Oct. 28	Apr. 12	199	11.33	13.80	12.20
Lea Hobbs	50	Nov. 4	Apr. 8	210	*14.87	19.79	20.64
Jal	28	Nov. 2	Apr. 1	215	*11.31	15.94	17.86
Lincoln Ft. Stanton	71	Oct. 7	May 7	153	*15.24	12.54	14.09
Corona	56	Oct. 14	May 6	161	15.87	12.36	20.33
Otero Alamogordo	51	Nov. 5	Apr. 6	213	9.80	11.95	14.18
Cloudcroft	67	Sept. 29	May 19	133	25.74	27.09	27.47

Source: Environmental Science Services Administration, Weather Bureau State Climatologist, Las Cruces, N.M.

USUAL PLANTING AND HARVESTING DATES

Crop	1969 harvested acreage (1,000 acres)	Usual planting dates	Usual harvesting dates			Principal Counties
			Begins	Most Active	Ends	
BARLEY						
Fall sown		Sept. 1-Nov. 1	June 10	June 15-July 10	July 20	Chaves-Dona Ana-Eddy
Spring sown	14	Feb. 15-Apr. 1	June 20	June 25-July 15	Aug. 1	
BEANS, dry	5	May 15-June 15	Sept. 1	Sept. 10-Oct. 1	Oct. 15	McKinley-Torrance-Luna
BROOMCORN	26	May 20-July 1	Aug. 20	Sept. 10-Oct. 10	Nov. 1	Quay-Roosevelt
CORN, all	50	Apr. 15-June 1	Sept. 15	Oct. 10-Nov. 1	Dec. 1	San Juan-Santa Fe-Torrance
COTTON	152	Apr. 1-May 15	Sept. 25	Oct. 15-Nov. 20	Jan. 1	Chaves-Dona Ana-Eddy
HAY, alfalfa	211		May 1		Oct. 20	Chaves-Dona Ana-Eddy
PEANUTS for nuts	7.9	May 10-June 1	Oct. 1	Oct. 10-Oct. 25	Nov. 10	Roosevelt
SORGHUM						
Grain	301	May 10-July 10	Oct. 1	Oct. 10-Nov. 10	Dec. 1	Curry-Roosevelt-Lea
Silage	6	May 10-June 20	Aug. 15	Sept. 5-Oct. 1	Oct. 20	
SUGAR BEETS	4.4	Feb. 1-Mar. 15	Nov. 1	Nov. 10-Dec. 1	Dec. 15	Curry-Hidalgo
WHEAT, winter	159	Sept. 1-Oct. 20	June 5	June 15-July 5	July 20	Curry-Quay-Roosevelt
SEED CROPS:						
ALFALFA	3.5		July 25	Aug. 15-Sept. 15	Oct. 1	Chaves-Dona Ana-Eddy
VEGETABLES:						
LETTUCE						
Early spring	4.8	Jan. 1-Jan. 15	Apr. 25	May 1-May 31	June 5	Dona Ana
Early fall	5.1	Aug. 1-Aug. 15	Oct. 5	Oct. 10-Oct. 31	Nov. 10	Dona Ana
ONIONS						
Grano	3.4	Oct. 1-Oct. 15	May 25	June 1-Aug. 31	Oct. 15	Lea-Dona Ana-Luna-Hidalgo
Sweet Spanish		Feb. 1-Feb. 15				
TOMATOES, all	.8	Apr. 15-May 20	Sept. 1	Sept. 1-Oct. 31	Nov. 1	Luna-Otero-Dona Ana
POTATOES	2.9	May 1-June 15	July 25	Aug. 15-Oct. 31	Nov. 15	Santa Fe-Torrance
APPLES						
North	...		Aug. 15	Sept. 5-Oct. 20	Oct. 30	San Juan-Rio Arriba Bernalillo-Sandoval Santa Fe
South	...		Aug. 15	Aug. 30-Oct. 15	Oct. 30	Lincoln-Otero-De Baca

Annual Crop Summary

Cash receipts from crop marketings in New Mexico totaled \$97,240,000 down 4 percent from last year's receipts of \$101,580,000. Realized Net Income per farm increased by 4 percent and is currently estimated at \$8680. This figure excludes changes in inventories and represents average income of the farm and ranch operators. The decrease in cash receipts from crops was mainly due to cotton, wheat, and pecans.

The 1969 wheat production of 5,088,000 bushels was down 33 percent from the 7,625,000 bushels produced in 1968. Acreage for harvest was also down from 305,000 acres in 1968 to 159,000 acres in 1969. Dry, windy weather throughout the spring months of 1969 caused considerable abandonment on dryland acreage. Also many farmers chose to graze their wheat rather than harvest it. With heavy abandonment of dryland wheat resulting in a larger proportion of total production from the irrigated acreage, average yield per acre for all wheat increased from 25.0 bushels in 1968 to 32.0 bushels in 1969.

Total feed grain production of corn, barley, and sorghum grain is estimated at 520,968 tons. This is 3 percent above last year's production of 505,080 tons. The increase in feed grain production resulted from an increase in sorghum grain and corn which more than offset the slight decrease in barley production. Sorghum grain production totaled 16,856,000 bushels, up 4 percent from the 16,182,000 bushels produced in 1968. Acreage for harvest increased from 279,000 in 1968 to 301,000 in 1969. Excellent moisture conditions in late May and early June encouraged farmers to plant more dryland sorghum which accounts for the acreage increase. Yield per acre was down 2 bushels from 1968 and is currently estimated at 56.0 bushels per acre. An increase in percentage of dryland to irrigated harvested acres was the main factor in the slight decrease in yield. Corn for grain production increased from 1,020,000 bushels in 1968 to 1,054,000 bushels in 1969. Harvested acres were unchanged at 17,000 acres. Yield per acre increased from 60.0 bushels in 1968 to 62.0 bushels which is a new record high for New Mexico. Production of barley for grain was down by 164,000 bushels and is currently estimated at 812,000 bushels. Harvested acres decreased from 16,000 acres in 1968 to 14,000 acres in 1969. Yield per acre was down from 61.0 bushels last year to 58.0 bushels per acre in 1969. Unfavorable spring weather hurt yields to some degree as some hail and wind damage occurred prior to harvest.

All cotton production for 1969 is estimated at 157,000 bales, down 19,000 bales from the 1968 crop. Acreage for harvest was down from 151,000 acres in 1968 to 146,000 acres in 1969. Yield per acre continued on a downward trend and is estimated at 517 pounds per acre, down from the 557 pounds per acre produced in 1968. Unfavorable weather, insects, and just generally poor conditions have plagued the cotton farmers for the past few years.

Production of all hay is estimated at 1,063,000 tons, up 14,000 tons from that produced last year. Alfalfa hay represents 89 percent of all hay and the other 11 percent is wild, grain, clo-tim, and other tame hay. The increase in production of all hay was due to the increase in acreage of wild and grain hay. Alfalfa production was down by 4,000 tons due to a decrease in yield from 4.70 tons per acre in 1968 to 4.50 tons per acre in 1969.

Broomcorn production decreased from 4,000 tons in 1968 down to 3,800 tons in 1969. Acreage for harvest was unchanged at 26,000 acres but yield was off 15 pounds per acre and is currently estimated at 290 pounds per acre. Production of peanuts at 17,479,000 pounds was down slightly from the 17,696,000 pounds produced in 1968. Acreage for harvest was down by two hundred acres and presently stands at 7,700 acres. Irish potato production decreased 38 percent from the 774,000 cwt. produced in 1968 due to a decrease in harvested acres. Sweet potato production totaled 33,250 cwt. compared to 44,000 cwt. in 1968. Apple production decreased slightly from 36,500,000 pounds in 1968 down to 30,000,000 in 1969. Hail damaged quality considerably in northern areas. Pecan production estimated at 7,500,000 pounds in 1969 is down 2,500,000 pounds from the record crop in 1968.

PRINCIPAL CROPS: ACREAGE, YIELD, PRODUCTION, PRICE, VALUE, ANNUAL 1968-1969

Commodity	Unit	Acreage harvested		Yield per acre		Production		Season Average Price		Value of Production	
		1968	1969 ^{1/}	1968	1969 ^{1/}	1968	1969 ^{1/}	1968	1969 ^{1/}	1968	1969 ^{1/}
		1,000 acres	1,000 acres	See Unit Column		1,000	1,000	Dollars	Dollars	1,000 Dollars	1,000 Dollars
GENERAL CROPS											
Corn for grain	Bu.	17	17	60.0	62.0	1020	1050	1.36	1.40	1387	1476
Corn for silage	Tons	29	29	15.5	15.5	450	454	--	--	---	---
Corn for forage	Tons	3	4	---	---	---	---	--	--	---	---
All Wheat	Bu.	305	159	25.0	32.0	7625	5088	1.25	1.30	9531	6614
Barley	Bu.	16	14	61.0	58.0	976	812	.97	1.07	947	869
Sorghum Grain	Bu.	279	301	58.0	56.0	16182	16856	.99	1.18	16020	19890
Sorghum Silage	Tons	8	6	11.3	11.5	90	69	--	--	---	---
Sorghum Forage	Tons	79	85	1.60	---	126	---	18.50	--	2331	---
Broomcorn	Tons	26	26	2/305	2/290	4.0	3.8	405.00	340.00	1620	1292
Cotton Lint	Lbs.	151	147	557	539	3/ 176	3/ 165	.2475	.2600	21831	21391
Cottonseed	Tons	--	--	---	---	74	70	52.90	45.00	3915	3150
Beans, dry	Lbs.	4	5	525	530	4/ 21	4/ 26	7.20	7.50	151	195
Potatoes	Cwt.	4.3	2.9	180	165	774	478	2.40	2.40	1858	1147
Peanuts	Lbs.	7.9	7.7	2240	2270	17696	17479	.140	.143	2477	2499
SEED CROPS											
Alfalfa seed	Lbs.	3.0	3.5	230	180	690	630	51.50	52.00	355	328
HEY CROPS											
All Hay	Tons	273	293	3.84	3.63	1049	1063	26.50	26.50	27798	28170
Alfalfa	Tons	203	211	4.70	4.50	954	950	--	--	---	---
Clow-Tin Hay	Tons	17	17	1.65	1.45	28	25	--	--	---	---
Grain	Tons	19	22	1.15	1.60	22	35	--	--	---	---
Other Tame Hay	Tons	14	18	1.60	1.60	22	29	--	--	---	---
Wild Hay	Tons	20	25	1.15	.95	23	24	--	--	---	---
FRUITS AND NUTS											
Pecans, improved	Lbs.	--	--	---	---	10000	7500	.485	.370	4850	2775
Apples	Lbs.	--	--	---	---	36500	30000	.0524	.0642	1913	1926
COMMERCIAL VEGETABLES											
Lettuce, early spring	Cwt.	4.6	4.8	164	150	5/ 754	5/ 720	2.95	3.60	2224	2592
Lettuce, early fall	Cwt.	6.4	5.1	225	210	1440	1071	4.70	7.40	6768	7925
Onions, early summer	Cwt.	4.1	3.4	300	275	1230	935	4.00	3.50	4920	3272
Tomatoes for processing	Tons	.9	.8	14.0	12.0	12.6	9.6	34.00	34.00	4.28	3.26

^{1/} Preliminary. ^{2/} Pounds. ^{3/} 500 pound gross weight bales. ^{4/} Bags of 100 pounds. ^{5/} Not harvested 1968: 546,000 Cwt. - 1969: 48,000 Cwt.

REALIZED GROSS AND NET INCOME OF FARM OPERATORS FROM FARMING, AND TOTAL, 1965-1968

Item	Year			
	1965	1966	1967	1968 ^{1/}
Number of Farms	14.9	14.6	14.3	14.0
---1,000---				
Cash receipts from farm marketings	262.5	289.5	301.0	322.4
Government payments	22.3	37.5	33.3	36.0
Value of home consumption	3.9	4.1	4.0	3.9
Gross rental value of farm dwellings	10.7	10.8	10.7	10.5
TOTAL	299.4	341.9	349.0	372.8
---1,000,000 dollars---				
Farm production expenses	209.7	217.1	235.2	256.0
Realized net farm income	89.7	124.8	113.8	116.7
Net changes in farm inventories	7.7	-1.3	-0.7	4.3
TOTAL NET FARM INCOME	97.4	123.6	113.1	121.0

CASH RECEIPTS FROM FARM MARKETINGS, BY COMMODITIES, 1965-1968

Commodity	Year			
	1965	1966	1967	1968 ^{1/}
---1,000 dollars---				
Cattle and calves	138327	154589	166709	181087
Sheep and lambs	5602	6371	5957	6405
Hog	3468	4202	3300	3171
Cotton lint	35490	32120	23594	23980
Cottonseed	4479	5380	3824	3707
Wheat	6819	6819	5279	8501
Sorghum grain	10339	11711	15261	12911
Hay	12864	13729	16187	16647
Broomcorn	1505	1708	1444	1489
Dry beans	330	317	213	150
Apples	958	1897	236	2521
Peanuts	1904	2067	2027	2485
Pecans	1529	3259	1344	8802

^{1/} Preliminary

New Mexico Agricultural Statistics

GRAIN STOCKS: QUANTITIES STORED ON AND OFF FARMS, 1968, 1969 AND 1970

Year	On farms				Off farms			
	Jan. 1	Apr. 1	July 1	Oct. 1	Jan. 1	Apr. 1	July 1	Oct. 1
	1,000 bushels	1,000 bushels	1,000 bushels	1,000 bushels	1,000 bushels	1,000 bushels	1,000 bushels	1,000 bushels
WHEAT								
1968	197	158	79	1068	1772	990	988	3038
1969	724	534	381	865	2567	2491	2386	2935
1970 1/..	407	254	---	---	3347	2287	---	---
CORN								
1968	696	344	200	96	NA	NA	NA	NA
1969	928	500	306	122	NA	NA	NA	NA
1970 1/..	738	422	---	---	124	122	---	---
BARLEY								
1968	155	106	49	205	NA	NA	NA	91
1969	146	107	44	195	210	85	43	159
1970 1/..	130	97	---	---	114	163	---	---
GRAIN SORGHUM								
1968	3639	1915	1149	766	8835	5957	3667	2814
1969	2913	1214	485	243	7125	5361	3417	1997
1970 1/..	2360	1517	---	---	7547	5550	---	---

1/ Preliminary. NA Not available.

HAY STOCKS: QUANTITIES STORED ON FARMS, 1968, 1969 AND 1970

1968		1969		1970 1/	
Jan. 1	May 1	Jan. 1	May 1	Jan. 1	May 1
1,000 tons	1,000 tons	1,000 tons	1,000 tons	1,000 tons	1,000 tons
347	106	524	126	436	---

1/ Preliminary.

New Mexico Agricultural Statistics



ALL COTTON: ACREAGE, YIELD, AND PRODUCTION, BY COUNTIES, IRRIGATED AND NON-IRRIGATED 1968

County	Acres Planted			Acres Harvested			Yield per Harvested Acre			Production (500 lb. gross weight bales)		
	Irrig.	Non-Irrig.	Total	Irrig.	Non-Irrig.	Total	Irrig.	Non-Irrig.	Total	Irrig.	Non-Irrig.	Total
	Acres	Acres	Acres	Acres	Acres	Acres	Pounds	Pounds	Pounds	Bales	Bales	Bales
Curry	1070	40	1110	960	40	1000	351	250	347	705	20	725
De Baca	360	0	360	290	0	290	400	---	400	245	---	245
Harding	10	0	10	10	0	10	300	---	300	7	---	7
Quay	1840	0	1840	1600	0	1600	522	---	522	1750	---	1750
Roosevelt	10500	2100	12600	8600	1500	10100	475	270	445	8555	845	9400
NORTHEAST DISTRICT	13780	2140	15920	11460	1540	13000	469	269	446	11262	865	12127
Grant	50	0	50	40	0	40	250	---	250	23	---	23
Hidalgo	3620	0	3620	3465	0	3465	451	---	451	3298	---	3298
Luna	14110	0	14110	13670	0	13670	644	---	644	18415	---	18415
Sierra	2370	0	2370	2280	0	2280	361	---	361	1730	---	1730
Socorro	1640	0	1640	1550	0	1550	305	---	305	1000	---	1000
SOUTHWEST DISTRICT	21790	0	21790	21005	0	21005	555	---	555	24466	---	24466
Chaves	28040	0	28040	26780	0	26780	599	---	599	33570	---	33570
Dona Ana	48600	0	48600	47150	0	47150	594	---	594	58500	---	58500
Eddy	24020	0	24020	23290	0	23290	648	---	648	31565	---	31565
Lea	20400	300	20700	17840	260	18100	374	200	371	13960	110	14070
Otero	1930	0	1930	1675	0	1675	481	---	481	1702	---	1702
SOUTHEAST DISTRICT	122990	300	123290	116735	260	116995	570	200	570	139297	110	139407
STATE	158560	2440	161000	149200	1800	151000	563	259	557	175025	975	176000

COTTONSEED: PRODUCTION, FARM DISPOSITION, PRICE, AND VALUE, 1967, 1968 AND 1969

Year	Production 1,000 tons	Farm Disposition		Season Average Price Per Ton Dollars	Value of Production 1,000 dollars
		Sold	Used on Farms		
		1,000 tons	1,000 tons		
1967	68	65	3	59.60	4053
1968	74	71	3	52.90	3915
1969	64	61	3	45.50	2912

ALL COTTON: ACREAGE, YIELD, AND PRODUCTION, BY COUNTIES, IRRIGATED AND NON-IRRIGATED 1969

County	Acres Planted			Acres Harvested			Yield per Harvested Acre			Production (500 lb. gross weight bales)		
	Irrig.	Non-Irrig.	Total	Irrig.	Non-Irrig.	Total	Irrig.	Non-Irrig.	Total	Irrig.	Non-Irrig.	Total
	Acres	Acres	Acres	Acres	Acres	Acres	Pounds	Pounds	Pounds	Bales	Bales	Bales
Curry	1010	100	1110	730	0	730	185	---	185	280	---	280
De Baca	250	0	250	20	0	20	750	---	750	30	---	30
Harding	10	0	10	0	0	0	---	---	---	---	---	---
Quay	2180	0	2180	2000	0	2000	284	---	284	1180	---	1180
Roosevelt	8750	6450	15200	7350	1450	8800	318	200	299	4850	600	5450
NORTHEAST DISTRICT	12200	6550	18750	10100	1450	11550	303	200	290	6340	600	6940
Grant	80	0	80	60	0	60	633	---	633	80	---	80
Hidalgo	3060	0	3060	2970	0	2970	826	---	826	5100	---	5100
Luna	13600	0	13600	13120	0	13120	779	---	779	21300	---	21300
Sierra	2110	0	2110	2040	0	2040	432	---	432	1830	---	1830
Socorro	1400	0	1400	1120	0	1120	614	---	614	1440	---	1440
SOUTHWEST DISTRICT	20250	0	20250	19310	0	19310	740	---	740	29750	---	29750
Chaves	28600	0	28600	26130	0	26130	645	---	645	35100	---	35100
Dona Ana	48400	0	48400	44070	0	44070	443	---	443	40700	---	40700
Eddy	23000	0	23000	21900	0	21900	609	---	609	27730	---	27730
Lea	21400	200	21600	20650	150	20800	361	200	359	15440	60	15500
Otero	2400	0	2400	2240	0	2240	274	---	274	1280	---	1280
SOUTHEAST DISTRICT	123800	200	124000	114990	150	115140	503	200	502	120250	60	120310
STATE	156250	6750	163000	144400	1600	146000	520	200	517	156340	660	157000

AMERICAN EGYPTIAN COTTON: ACREAGE, YIELD, AND PRODUCTION, BY COUNTIES, ALL IRRIGATED, 1968 and 1969

County	1968				1969			
	Acres		Yield per harvested acre Pounds	Production (500 pound gross weight bales) Bales	Acres		Yield per harvested acre Pounds	Production (500 pound gross weight bales) Bales
	Planted	Harvested			Planted	Harvested		
Hidalgo	20	15	265	8	20	340	15	
Luna	110	80	422	65	970	583	1115	
Sierra	180	160	351	115	130	647	160	
SOUTHWEST DISTRICT	310	255	368	188	1120	1060	1290	
Chaves	40	30	480	30	240	443	215	
Dona Ana	13500	12900	412	11100	14460	13070	10600	
Eddy	120	90	353	65	140	415	86	
Otero	30	25	357	17	40	110	9	
SOUTHEAST DISTRICT	13690	13045	412	11212	14880	13440	10910	
STATE	14000	13300	411	11400	16000	14500	12200	

UPLAND COTTON: ACREAGE, YIELD, AND PRODUCTION, BY COUNTIES, IRRIGATED AND NON-IRRIGATED 1968

County	Acres Planted			Acres Harvested			Yield per Harvested Acre			Production (500 lb. gross weight bales)		
	Irrig.	Non-Irrig.	Total	Irrig.	Non-Irrig.	Total	Irrig.	Non-Irrig.	Total	Irrig.	Non-Irrig.	Total
	Acres	Acres	Acres	Acres	Acres	Acres	Pounds	Pounds	Pounds	Bales	Bales	Bales
Curry	1070	40	1110	960	40	1000	351	250	347	705	20	725
De Baca	360	0	360	290	0	290	400	---	400	245	---	245
Harding	10	0	10	10	0	10	300	---	300	7	---	7
Quay	1840	0	1840	1600	0	1600	522	---	522	1750	---	1750
Roosevelt	10500	2100	12600	8600	1500	10100	475	270	445	8555	845	9400
NORTHEAST DISTRICT	13780	2140	15920	11460	1540	13000	469	269	446	11262	865	12127
Grant	50	0	50	40	0	40	250	---	250	23	---	23
Hidalgo	3600	0	3600	3450	0	3450	452	---	452	3290	---	3290
Luna	14000	0	14000	13590	0	13590	645	---	645	18350	---	18350
Sierra	2190	0	2190	2120	0	2120	362	---	362	1615	---	1615
Socorro	1640	0	1640	1550	0	1550	305	---	305	1000	---	1000
SOUTHWEST DISTRICT	21480	0	21480	20750	0	20750	558	---	558	24278	---	24278
Chaves	28000	0	28000	26750	0	26750	599	---	599	33540	---	33540
Dona Ana	35100	0	35100	34250	0	34250	662	---	662	47400	---	47400
Eddy	23900	0	23900	23200	0	23200	649	---	649	31500	---	31500
Lea	20400	300	20700	17840	260	18100	374	200	371	13960	110	14070
Otero	1900	0	1900	1650	0	1650	483	---	483	1685	---	1685
SOUTHEAST DISTRICT	109300	300	109600	103690	260	103950	590	200	589	128085	110	128195
STATE	144560	2440	147000	135900	1800	137700	576	259	572	163625	975	164600

UPLAND COTTON: ACREAGE, YIELD, AND PRODUCTION BY COUNTIES, IRRIGATED AND NON-IRRIGATED 1969

County	Acres Planted			Acres Harvested			Yield per Harvested Acre			Production (500 lb. gross weight bales)		
	Irrig.	Non-Irrig.	Total	Irrig.	Non-Irrig.	Total	Irrig.	Non-Irrig.	Total	Irrig.	Non-Irrig.	Total
	Acres	Acres	Acres	Acres	Acres	Acres	Pounds	Pounds	Pounds	Bales	Bales	Bales
Curry	1010	100	1110	730	0	730	185	---	185	280	---	280
De Baca	250	0	250	20	0	20	750	---	750	30	---	30
Harding	10	0	10	0	0	0	---	---	---	---	---	---
Quay	2180	0	2180	2000	0	2000	284	---	284	1180	---	1180
Roosevelt	8750	6450	15200	7350	1450	8800	318	200	299	4850	600	5450
NORTHEAST DISTRICT	12200	6550	18750	10100	1450	11550	303	200	290	6340	600	6940
Grant	80	0	80	60	0	60	633	---	633	80	---	80
Hidalgo	3040	0	3040	2950	0	2950	829	---	829	5085	---	5085
Luna	12630	0	12630	12200	0	12200	794	---	794	20185	---	20185
Sierra	1980	0	1980	1920	0	1920	418	---	418	1670	---	1670
Socorro	1400	0	1400	1120	0	1120	614	---	614	1440	---	1440
SOUTHWEST DISTRICT	19130	0	19130	18250	0	18250	748	---	748	28460	---	28460
Chaves	28360	0	28360	25900	0	25900	647	---	647	34885	---	34885
Dona Ana	33940	0	33940	31000	0	31000	466	---	466	30100	---	30100
Eddy	22860	0	22860	21800	0	21800	610	---	610	27644	---	27644
Lea	21400	200	21600	20650	150	20800	361	200	359	15440	60	15500
Otero	2360	0	2360	2200	0	2200	277	---	277	1271	---	1271
SOUTHEAST DISTRICT	108920	200	109120	101550	150	101700	569	200	517	109340	60	109400
STATE	140250	6750	147000	129900	1600	131500	578	200	529	144140	660	144800

BARLEY: ACREAGE, YIELD AND PRODUCTION BY COUNTIES, IRRIGATED AND NON-IRRIGATED, 1968

County	Acres planted all purposes	Acres harvested			Yield per harvested acre			Production		
		Irrig.	Non-Irrig.	Total	Irrig.	Non-Irrig.	Total	Irrig.	Non-Irrig.	Total
Bernalillo	100	80	0	80	37.0	37.0	2960	2960
McKinley	60	0	0	0
Rio Arriba	200	60	90	150	49.0	26.0	35.2	2940	2340	5280
Sandoval	80	0	60	60	20.0	20.0	1200	1200
San Juan	300	150	0	150	48.0	48.0	7200	7200
Santa Fe	600	390	60	450	69.0	20.0	62.5	26910	1200	28110
Taos	760	660	40	700	40.0	14.0	38.5	26400	560	26960
Valencia	1500	500	0	500	54.0	54.0	27000	27000
NORTHWEST DISTRICT	3600	1840	250	2090	50.8	21.2	47.2	93410	5300	98710
Colfax	300	150	0	150	49.0	49.0	7350	7350
Curry	3400	2200	200	2400	85.0	25.0	80.0	187000	5000	192000
De Baca	120	120	0	120	64.0	64.0	7680	7680
Guadalupe	30	30	0	30	40.0	40.0	1200	1200
Mora	350	130	70	200	40.0	15.0	31.2	5200	1050	6250
Quay	350	0	200	200	24.0	24.0	4800	4800
Roosevelt	500	300	100	400	74.0	14.0	59.0	22200	1400	23600
San Miguel	150	30	30	60	25.0	15.0	20.0	750	450	1200
Torrance	800	670	0	670	53.0	53.0	35510	35510
Union	500	450	0	450	50.0	50.0	22500	22500
NORTHEAST DISTRICT	6500	4080	600	4680	70.9	21.2	64.5	289390	12700	302090
Catron	50	30	0	30	40.0	40.0	1200	1200
Grant	400	200	0	200	40.0	40.0	8000	8000
Hidalgo	800	600	0	600	70.0	70.0	42000	42000
Luna	3200	1500	0	1500	72.0	72.0	108000	108000
Sierra	400	300	0	300	40.0	40.0	12000	12000
Socorro	500	200	0	200	65.0	65.0	13000	13000
SOUTHWEST DISTRICT	5350	2830	0	2830	65.1	65.1	184200	184200
Chaves	6000	3000	0	3000	57.0	57.0	171000	171000
Dona Ana	3200	1900	0	1900	70.0	70.0	133000	133000
Eddy	1200	700	0	700	70.0	70.0	49000	49000
Lea	800	600	0	600	40.0	40.0	24000	24000
Lincoln	70	0	0	0
Otero	280	200	0	200	70.0	70.0	14000	14000
SOUTHEAST DISTRICT	11550	6400	0	6400	61.1	61.1	391000	391000
STATE	27000	15150	850	16000	63.2	21.2	61.0	958000	18000	976000

BARLEY: ACREAGE, YIELD AND PRODUCTION BY COUNTIES, IRRIGATED AND NON-IRRIGATED, 1969 1/

County	Acres planted all purposes	Acres Harvested			Yield per harvested acre			Production		
		Irrig.	Non-Irrig.	Total	Irrig.	Non-Irrig.	Total	Irrig.	Non-Irrig.	Total
Bernalillo	100	80	0	80	40.0	---	40.0	3200	---	3200
McKinley	150	10	0	10	30.0	---	30.0	300	---	300
Rio Arriba	360	30	220	250	50.0	20.0	23.6	1500	4400	5900
Sandoval	50	0	0	0	---	---	---	---	---	---
San Juan	400	100	0	100	42.0	---	42.0	4200	---	4200
Santa Fe	330	100	0	100	103.0	---	103.0	10300	---	10300
Taos	1000	830	0	830	38.0	---	38.0	31540	---	31540
Valencia	1300	150	0	150	48.0	---	48.0	7200	---	7200
NORTHWEST DISTRICT	3690	1300	220	1520	44.8	20.0	41.2	58240	4400	62640
Colfax	480	390	0	390	52.0	---	52.0	20280	---	20280
Curry	2000	720	20	740	75.0	25.0	73.6	54000	500	54500
De Baca	30	30	0	30	52.0	---	52.0	1560	---	1560
Guadalupe	30	0	0	0	---	---	---	---	---	---
Harding	300	0	50	50	---	11.0	11.0	---	550	550
Mora	200	50	50	100	38.0	15.0	26.5	1900	750	2650
Quay	340	150	50	200	54.0	20.0	45.5	8100	1000	9100
Roosevelt	260	230	0	230	86.7	---	86.7	19950	---	19950
San Miguel	120	60	10	70	40.0	10.0	35.7	2400	100	2500
Torrance	1200	700	0	700	48.0	---	48.0	33600	---	33600
Union	30	30	0	30	45.0	---	45.0	1350	---	1350
NORTHEAST DISTRICT	4990	2360	180	2540	60.7	16.1	57.5	143140	2900	146040
Catron	20	0	0	0	---	---	---	---	---	---
Grant	400	120	0	120	42.0	---	42.0	5040	---	5040
Hidalgo	1100	720	0	720	68.0	---	68.0	48960	---	48960
Luna	3600	1600	0	1600	60.0	---	60.0	96000	---	96000
Sierra	300	10	0	10	44.0	---	44.0	440	---	440
Socorro	150	30	0	30	64.0	---	64.0	1920	---	1920
SOUTHWEST DISTRICT	5570	2480	0	2480	61.4	---	61.4	152360	---	152360
Chaves	6400	3400	0	3400	57.0	---	57.0	193800	---	193800
Dona Ana	2300	2200	0	2200	60.0	---	60.0	132000	---	132000
Eddy	2400	1600	0	1600	68.0	---	68.0	108800	---	108800
Lea	370	140	0	140	50.0	---	50.0	7000	---	7000
Lincoln	40	0	0	0	---	---	---	---	---	---
Otero	240	120	0	120	78.0	---	78.0	9360	---	9360
SOUTHEAST DISTRICT	11750	7460	0	7460	60.4	---	60.4	450960	---	450960
STATE	26000	13600	400	14000	59.2	18.2	58.0	804700	7300	812000

1/ Preliminary

CORN: ACREAGE, YIELD AND PRODUCTION BY COUNTIES, IRRIGATED AND NON-IRRIGATED, 1968

County	Acres planted all purposes	Harvested for grain								
		Acres			Yield per acre			Production		
		Irrig.	Non-Irrig.	Total	Irrig.	Non-Irrig.	Total	Irrig.	Non-Irrig.	Total
Acres	Acres	Acres	Acres	Bushels	Bushels	Bushels	Bushels	Bushels	Bushels	
Bernalillo	1200	80	20	100	29.0	15.0	26.2	2320	300	2620
McKinley	3000	570	930	1500	25.0	10.0	15.7	14250	9300	23550
Rio Arriba	1500	600	0	600	30.0	30.0	18000	18000
Sandoval	1200	950	50	1000	34.0	10.0	32.8	32300	500	32800
San Juan	6000	2200	300	2500	60.0	12.0	54.2	132000	3600	135600
Santa Fe	2700	400	50	450	70.0	10.0	63.3	28000	500	28500
Taos	250	130	20	150	22.0	12.0	20.7	2860	240	3100
Valencia	2100	400	100	500	50.0	15.0	43.0	20000	1500	21500
NORTHWEST DISTRICT	17950	5330	1470	6800	46.9	10.8	39.1	249730	15940	265670
Colfax	2500	500	250	750	45.0	15.0	35.0	22500	3750	26250
Curry	4200	30	20	50	80.0	8.0	51.2	2400	160	2560
De Baca	100	90	0	90	60.0	60.0	5400	5400
Guadalupe	200	100	0	100	40.0	40.0	4000	4000
Harding	50	30	0	30	34.0	34.0	1020	1020
Mora	100	60	10	70	50.0	10.0	44.3	3000	100	3100
Quay	1500	100	0	100	65.0	65.0	6500	6500
Roosevelt	2100	350	0	350	110.0	110.0	38500	38500
San Miguel	650	200	100	300	35.0	10.0	26.7	7000	1000	8000
Torrance	4000	1000	100	1100	70.0	10.0	64.5	70000	1000	71000
Union	2400	2050	50	2100	85.0	11.0	83.2	174250	550	174800
NORTHEAST DISTRICT	17800	4510	530	5040	74.2	12.4	67.7	334570	6560	341130
Catron	100	100	0	100	30.0	30.0	3000	3000
Grant	400	100	0	100	69.0	69.0	6900	6900
Hidalgo	600	550	0	550	100.0	100.0	55000	55000
Luna	3700	3100	0	3100	90.0	90.0	279000	279000
Sierra	600	140	0	140	50.0	50.0	7000	7000
Socorro	450	300	0	300	60.0	60.0	18000	18000
SOUTHWEST DISTRICT	5850	4290	0	4290	86.0	86.0	368900	368900
Chaves	5000	350	0	350	60.0	60.0	21000	21000
Dona Ana	1000	150	0	150	50.0	50.0	7500	7500
Eddy	1200	100	0	100	40.0	40.0	4000	4000
Lea	800	100	0	100	50.0	50.0	5000	5000
Lincoln	100	70	0	70	40.0	40.0	2800	2800
Otero	300	100	0	100	40.0	40.0	4000	4000
SOUTHEAST DISTRICT	8400	870	0	870	50.9	50.9	44300	44300
STATE	50000	15000	2000	17000	66.5	11.2	60.0	997500	22500	1020000

CORN: ACREAGE, YIELD AND PRODUCTION BY COUNTIES, IRRIGATED AND NON-IRRIGATED, 1969 ^{1/}

County	Acres planted all purposes	Harvested for grain								
		Acres			Yield per acre			Production		
		Irrig.	Non-Irrig.	Total	Irrig.	Non-Irrig.	Total	Irrig.	Non-Irrig.	Total
Acres	Acres	Acres	Acres	Bushels	Bushels	Bushels	Bushels	Bushels	Bushels	
Bernalillo	1200	100	0	100	27.0	27.0	2700	2700
McKinley	3400	800	300	1100	32.0	15.0	27.4	25600	4500	30100
Rio Arriba	500	400	0	400	32.0	32.0	12800	12800
Sandoval	1500	1000	0	1000	42.0	42.0	42000	42000
San Juan	6300	2500	200	2700	72.0	13.0	67.6	180000	2600	182600
Santa Fe	2500	800	50	850	92.0	13.0	87.4	73600	650	74250
Taos	500	400	0	400	38.0	38.0	15200	15200
Valencia	2800	500	500	1000	52.0	13.0	32.5	26000	6500	32500
NORTHWEST DISTRICT	18700	6500	1050	7550	58.1	13.6	51.9	377900	14250	392150
Colfax	2300	170	180	350	72.0	17.0	43.7	12240	3060	15300
Curry	3400	430	20	450	85.0	10.0	81.7	36550	200	36750
De Baca	50	30	0	30	72.0	72.0	2160	2160
Guadalupe	250	190	10	200	60.0	15.0	57.8	11400	150	11550
Harding	100	50	0	50	40.0	40.0	2000	2000
Mora	220	10	80	90	44.0	18.0	20.9	440	1440	1880
Quay	2000	0	50	50	8.0	8.0	400	400
Roosevelt	1300	400	0	400	80.0	80.0	32000	32000
San Miguel	450	190	160	350	44.0	15.0	30.7	8360	2400	10760
Torrance	5000	1700	400	2100	64.0	15.0	54.7	108800	6000	114800
Union	4200	2150	150	2300	87.0	14.0	82.2	187050	2100	189150
NORTHEAST DISTRICT	19270	5320	1050	6370	75.4	15.0	65.4	401000	15750	416750
Catron	40	20	0	20	59.0	59.0	1180	1180
Grant	420	100	0	100	76.0	76.0	7600	7600
Hidalgo	300	200	0	200	97.0	97.0	19400	19400
Luna	1700	1300	0	1300	95.0	95.0	123500	123500
Sierra	670	100	0	100	55.0	55.0	5500	5500
Socorro	1000	320	0	320	77.0	77.0	24640	24640
SOUTHWEST DISTRICT	4130	2040	0	2040	89.1	89.1	181820	181820
Chaves	5600	500	0	500	70.0	70.0	35000	35000
Dona Ana	1500	200	0	200	47.0	47.0	9400	9400
Eddy	1350	50	0	50	57.0	57.0	2850	2850
Lea	900	150	0	150	42.0	42.0	6300	6300
Lincoln	100	70	0	70	67.0	67.0	4690	4690
Otero	450	70	0	70	72.0	72.0	5040	5040
SOUTHEAST DISTRICT	9900	1040	0	1040	60.8	60.8	63280	63280
STATE	52000	14900	2100	17000	68.7	14.3	62.0	1024000	30000	1054000

^{1/} Preliminary

ALL SORGHUMS: ACREAGE, YIELD AND PRODUCTION BY COUNTIES, IRRIGATED AND NON-IRRIGATED, 1968 1/

County	Acres planted all purposes			Acres			Harvested for grain Yield per acre			Production		
	Irrig.	Non-Irrig.	Total	Irrig.	Non-Irrig.	Total	Yield per acre			Production		
							Irrig.	Non-Irrig.	Total	Irrig.	Non-Irrig.	Total
	Acres	Acres	Acres	Acres	Acres	Acres	Bushels	Bushels	Bushels	Bushels	Bushels	Bushels
Bernalillo	300	0	300	100	0	100	30.0	30.0	3000	3000
McKinley	150	0	150	0	0	0
Rio Arriba	100	50	150	0	0	0
Sandoval	140	0	140	60	0	60	25.0	25.0	1500	1500
San Juan	350	50	400	90	0	90	40.0	40.0	3600	3600
Santa Fe	150	0	150	0	0	0
Taos	50	0	50	0	0	0
Valencia	660	0	660	250	0	250	54.0	54.0	13500	13500
NORTHWEST DISTRICT	1900	100	2000	500	0	500	43.2	77.7	43.2	21600	77.7	21600
Colfax	450	1450	1900	400	100	500	41.0	15.0	35.8	16400	1500	17900
Curry	57000	53000	110000	56000	24000	80000	98.0	15.0	73.1	5488000	360000	5848000
De Baca	1100	0	1100	800	0	800	62.0	62.0	49600	49600
Guadalupe	100	100	200	30	70	100	50.0	14.0	24.8	1500	980	2480
Harding	550	1050	1600	300	800	1100	38.5	18.9	24.2	11550	15100	26650
Mora	150	350	500	100	50	150	40.0	14.0	31.3	4000	700	4700
Quay	11000	28000	39000	8600	12400	21000	54.0	16.5	31.9	464400	204600	669000
Roosevelt	30000	56000	86000	25000	46000	71000	65.0	22.0	37.1	1625000	1012000	2637000
San Miguel	150	450	600	100	50	150	41.0	14.0	32.0	4100	700	4800
Torrance	800	800	1600	670	30	700	35.0	14.0	34.1	23450	420	23870
Union	17600	19400	37000	13000	9000	22000	55.0	15.0	38.6	715000	135000	850000
NORTHEAST DISTRICT	118900	160600	279500	105000	92500	197500	80.0	18.2	51.3	8403000	1731000	10134000
Catron	50	0	50	0	0	0
Grant	1350	0	1350	500	0	500	62.0	62.0	31000	31000
Hidalgo	14000	0	14000	13000	0	13000	84.0	84.0	1092000	1092000
Luna	26000	0	26000	21000	0	21000	90.0	90.0	1890000	1890000
Sierra	200	0	200	100	0	100	72.0	74.0	7200	7200
Socorro	900	0	900	700	0	700	75.0	75.0	52500	52500
SOUTHWEST DISTRICT	42500	0	42500	35300	0	35300	87.0	77.7	87.0	3072700	77.7	3072700
Chaves	13300	0	13300	6300	0	6300	64.0	64.0	403200	403200
Doña Ana	3300	0	3300	2500	0	2500	68.0	68.0	170000	170000
Eddy	3000	0	3000	1300	0	1300	90.0	90.0	117000	117000
Lea	39000	6000	45000	32500	2500	35000	66.6	24.0	63.6	2164500	60000	2224500
Lincoln	50	0	50	0	0	0
Otero	1350	0	1350	600	0	600	65.0	65.0	39000	39000
SOUTHEAST DISTRICT	60000	6000	66000	43200	2500	45700	67.0	24.0	64.6	2893700	60000	2953700
STATE	223300	166700	390000	184000	95000	279000	78.2	18.9	58.0	14391000	1791000	16182000

1/ Revised

ALL SORGHUMS: ACREAGE, YIELD AND PRODUCTION BY COUNTIES, IRRIGATED AND NON-IRRIGATED, 1969 1/

County	Acres planted all purposes			Acres			Harvested for grain Yield per acre			Production		
	Irrig.	Non-Irrig.	Total	Irrig.	Non-Irrig.	Total	Yield per acre			Production		
							Irrig.	Non-Irrig.	Total	Irrig.	Non-Irrig.	Total
	Acres	Acres	Acres	Acres	Acres	Acres	Bushels	Bushels	Bushels	Bushels	Bushels	Bushels
Bernalillo	250	150	400	200	50	250	70.0	18.0	59.6	14000	900	14900
McKinley	150	0	150	50	0	50	40.0	40.0	2000	2000
Rio Arriba	50	0	50	0	0	0
Sandoval	100	0	100	0	0	0
San Juan	400	50	450	300	0	300	40.0	40.0	12000	12000
Santa Fe	200	0	200	0	0	0
Taos	50	0	50	0	0	0
Valencia	600	0	600	100	0	100	53.0	53.0	5300	5300
NORTHWEST DISTRICT	1800	200	2000	650	50	700	51.2	18.0	48.9	33300	900	34200
Colfax	200	1200	1400	50	50	100	45.0	15.0	30.0	2250	750	3000
Curry	55000	60000	115000	54000	38000	92000	101.0	16.5	66.1	5454000	627000	6081000
De Baca	1600	0	1600	500	0	500	100.0	100.0	50000	50000
Guadalupe	200	50	250	50	0	50	50.0	50.0	2500	2500
Harding	400	950	1350	300	500	800	50.0	14.0	27.5	15000	7000	22000
Mora	0	400	400	0	0	0
Quay	9100	32900	42000	8000	13100	21100	76.8	20.6	41.9	614400	269850	884250
Roosevelt	32000	63000	95000	31000	52000	83000	58.0	18.9	33.5	1798000	982800	2780800
San Miguel	300	400	700	150	100	250	45.0	15.0	32.8	6750	1500	8250
Torrance	500	1000	1500	150	50	200	51.0	14.0	42.0	7650	700	8350
Union	15000	25000	40000	11000	15000	26000	89.0	19.5	48.9	979000	292500	1271500
NORTHEAST DISTRICT	114300	184900	299200	105200	118800	224000	84.9	18.4	49.6	8929550	2182100	11111650
Catron	50	0	50	0	0	0
Grant	1550	0	1550	1500	0	1500	86.0	86.0	129000	129000
Hidalgo	13500	0	13500	13000	0	13000	75.0	75.0	975000	975000
Luna	25000	0	25000	24000	0	24000	93.0	93.0	2232000	2232000
Sierra	100	0	100	60	0	60	70.0	70.0	4200	4200
Socorro	700	0	700	370	0	370	95.0	95.1	35150	35150
SOUTHWEST DISTRICT	40900	0	40900	38930	0	38930	86.7	86.7	3375350	3375350
Chaves	13500	0	13500	4000	0	4000	73.0	73.0	292000	292000
Doña Ana	3500	0	3500	2900	0	2900	62.0	62.0	179800	179800
Eddy	3300	0	3300	1900	0	1900	94.0	94.0	178600	178600
Lea	30000	4000	34000	25450	2050	27500	62.0	20.0	58.9	1577900	41000	1618900
Lincoln	100	0	100	70	0	70	50.0	50.0	3500	3500
Otero	1500	0	1500	1000	0	1000	62.0	62.0	62000	62000
SOUTHEAST DISTRICT	51900	4000	55900	35320	2050	37370	64.9	20.0	62.5	2293800	41000	2334800
STATE	208900	189100	398000	180100	120900	301000	81.2	18.4	56.0	14632000	2224000	16856000

1/ Preliminary

WINTER WHEAT: ACREAGE, YIELD, AND PRODUCTION BY COUNTIES, IRRIGATED AND NON-IRRIGATED, 1968 1/

County	Acres planted			Acres harvested			Yield per harvested acre			Production		
	Irrig.	Non-Irrig.	Total	Irrig.	Non-Irrig.	Total	Irrig.	Non-Irrig.	Total	Irrig.	Non-Irrig.	Total
	Acres	Acres	Acres	Acres	Acres	Acres	Bushels	Bushels	Bushels	Bushels	Bushels	Bushels
Bernalillo	600	200	800	350	150	500	32.0	20.0	28.4	11200	3000	14200
McKinley	100	300	400	70	280	350	25.0	13.0	15.4	1750	3640	5390
Rio Arriba	200	4800	5000	150	4450	4600	26.0	20.0	20.2	3900	89000	92900
Sandoval	300	200	500	250	150	400	33.0	10.0	24.4	8250	1500	9750
San Juan	100	50	150	100	0	100	41.0	41.0	4100	4100
Santa Fe	500	1300	1800	500	1200	1700	40.0	17.0	23.8	20000	20400	40400
Taos	500	100	600	500	50	550	23.0	13.0	22.1	11500	650	12150
Valencia	1000	1100	2100	200	300	500	46.0	14.5	27.1	9200	4350	13550
NORTHWEST DISTRICT	3300	8050	11350	2120	6580	8700	33.0	18.6	22.1	69900	122540	192440
Colfax	1500	2500	4000	1400	1900	3300	25.0	10.0	16.4	35000	19000	54000
Curry	64000	100000	164000	62000	94000	156000	49.0	17.0	29.7	3038000	1598000	4636000
De Baca	300	0	300	250	0	250	46.0	46.0	11500	11500
Guadalupe	100	0	100	50	0	50	30.0	30.0	1500	1500
Harding	500	8800	9300	300	4900	5200	25.0	13.0	13.7	7500	63700	71200
Mora	300	600	900	200	400	600	19.5	10.0	13.2	3900	4000	7900
Quay	9000	81000	90000	8000	69000	77000	30.1	15.7	17.2	240800	1083300	1324100
Roosevelt	9000	36000	45000	8500	33500	42000	38.0	18.6	22.5	323000	623100	946100
San Miguel	600	300	900	500	100	600	25.0	11.0	22.7	12500	1100	13600
Torrance	1100	3400	4500	1000	3200	4200	50.0	12.0	21.0	50000	38400	88400
Union	3600	1000	4600	3200	900	4100	40.0	14.0	34.3	128000	12600	140600
NORTHEAST DISTRICT	9000	23360	32360	8540	20790	29330	45.1	16.6	24.9	3851700	3443200	7294900
Catron	40	0	40	0	0	0
Grant	500	300	800	450	100	550	35.0	10.0	30.5	15750	1000	16750
Hidalgo	1800	0	1800	1500	0	1500	57.0	57.0	85500	85500
Luna	200	0	200	100	0	100	44.0	44.0	4400	4400
Sierra	20	0	20	0	0	0
Socorro	240	0	240	200	0	200	30.0	30.0	6000	6000
SOUTHWEST DISTRICT	2800	300	3100	2250	100	2350	49.6	10.0	47.9	111650	1000	112650
Chaves	400	0	400	300	0	300	35.0	35.0	10500	10500
Dona Ana	60	0	60	50	0	50	41.0	41.0	2050	2050
Eddy	200	0	200	150	0	150	40.0	40.0	6000	6000
Lea	170	30	200	100	0	100	50.0	50.0	5000	5000
Lincoln	40	0	40	0	0	0
Otero	30	20	50	30	20	50	40.0	13.0	29.2	1200	260	1460
SOUTHEAST DISTRICT	900	50	950	630	20	650	39.3	13.0	38.5	24750	260	25010
STATE	97000	242000	339000	90400	214600	305000	44.9	16.6	25.0	4058000	3567000	7625000

1/ Revised

WINTER WHEAT: ACREAGE, YIELD, AND PRODUCTION BY COUNTIES, IRRIGATED AND NON-IRRIGATED, 1969 1/

County	Acres planted			Acres harvested			Yield per harvested acre			Production		
	Irrig.	Non-Irrig.	Total	Irrig.	Non-Irrig.	Total	Irrig.	Non-Irrig.	Total	Irrig.	Non-Irrig.	Total
	Acres	Acres	Acres	Acres	Acres	Acres	Bushels	Bushels	Bushels	Bushels	Bushels	Bushels
Bernalillo	400	300	700	30	120	150	40.0	21.0	24.8	1200	2520	3720
McKinley	100	200	300	70	130	200	35.0	16.0	22.6	2450	2080	4530
Rio Arriba	100	3300	3400	0	3300	3300	14.7	14.7	48500	48500
Sandoval	40	110	150	40	110	150	40.0	14.0	20.9	1600	1540	3140
San Juan	250	50	300	200	0	200	30.0	30.0	6000	6000
Santa Fe	330	770	1100	250	750	1000	41.0	23.0	27.5	10250	17250	27500
Taos	800	100	900	780	70	850	30.0	14.0	28.7	23400	980	24380
Valencia	1120	830	1950	80	320	400	30.0	16.0	18.8	2400	5130	7530
NORTHWEST DISTRICT	3140	5660	8800	1450	4800	6250	32.6	16.2	20.0	47300	78000	125300
Colfax	760	2440	3200	530	1520	2050	50.0	13.0	22.6	26500	19760	46260
Curry	55000	86000	141000	40000	43000	83000	63.0	16.5	38.9	2520000	709500	3229500
De Baca	340	60	400	70	80	150	50.0	17.0	32.4	3500	1360	4860
Guadalupe	100	0	100	0	0	0
Harding	200	5800	6000	50	2450	2500	45.0	17.0	17.6	2250	41650	43900
Mora	100	500	600	50	300	350	30.0	12.0	14.6	1500	3600	5100
Quay	7000	64500	71500	5000	34000	39000	55.0	17.0	21.9	275000	578000	853000
Roosevelt	8300	36700	45000	5000	15000	20000	56.0	16.0	26.0	280000	240000	520000
San Miguel	600	200	800	150	0	150	44.0	44.0	6600	6600
Torrance	1100	900	2000	1050	550	1600	49.0	12.0	36.3	51450	6600	58050
Union	2200	800	3000	1000	300	1300	49.0	11.1	40.3	49000	3330	52330
NORTHEAST DISTRICT	75700	197900	273600	52900	97200	150100	60.8	16.5	32.1	3215800	1603800	4819600
Catron	20	20	40	20	0	20	39.0	39.0	780	780
Grant	800	300	1100	70	0	70	37.0	37.0	2590	2590
Hidalgo	1530	0	1530	800	0	800	65.0	65.0	52000	52000
Luna	1630	0	1630	1360	0	1360	50.0	50.0	68000	68000
Sierra	20	0	20	0	0	0
Socorro	350	0	350	50	0	50	50.0	50.0	2500	2500
SOUTHWEST DISTRICT	4350	320	4670	2300	0	2300	54.7	54.7	125870	125870
Chaves	400	0	400	100	0	100	40.0	40.0	4000	4000
Dona Ana	80	0	80	80	0	80	58.0	58.0	4640	4640
Eddy	100	0	100	20	0	20	39.5	39.5	790	790
Lea	30	120	150	0	0	0
Lincoln	50	0	50	0	0	0
Otero	150	0	150	150	0	150	52.0	52.0	7800	7800
SOUTHEAST DISTRICT	810	120	930	350	0	350	49.2	49.2	17230	17230
STATE	84000	204000	288000	57000	102000	159000	59.8	16.5	32.0	3406200	1681800	5088000

1/ Preliminary

New Mexico Agricultural Statistics

ALL HAY: ACREAGE, YIELD, AND PRODUCTION BY COUNTIES, 1968 and 1969

County	1968			1969 ^{1/}		
	Acres harvested	Yield per acre	Production	Acres harvested	Yield per acre	Production
	Acres	Tons	Tons	Acres	Tons	Tons
Bernalillo	7600	3.5	26840	7300	4.1	29740
McKinley	1500	1.6	2400	1300	1.8	2370
Rio Arriba	10300	1.6	16540	12000	1.3	15650
Sandoval	8200	2.3	18500	6200	2.8	17410
San Juan	15300	3.3	50490	16000	3.4	54800
Santa Fe	4100	3.0	12300	5200	2.1	10840
Taos	7500	1.7	12750	11600	1.6	18990
Valencia	14800	3.9	58200	21700	4.0	86550
NORTHWEST DISTRICT	69300	2.86	198020	81300	2.91	236350
Colfax	16200	1.3	20920	16000	1.6	26000
Curry	6000	3.4	20200	5000	3.6	18250
De Baca	4800	4.4	21120	5000	3.3	16640
Guadalupe	3000	2.1	6300	3400	1.3	4260
Harding	6500	1.3	8450	6000	0.8	5040
Mora	14000	1.2	16800	12200	1.3	15540
Quay	7100	4.0	28400	6600	3.6	23960
Roosevelt	5100	3.5	18550	4800	3.4	16320
San Miguel	5200	1.0	5200	4900	1.5	7450
Torrance	4300	3.5	15050	6500	3.7	24000
Union	8800	1.2	10560	10600	1.6	17200
NORTHEAST DISTRICT	81200	2.11	171550	81000	2.16	174660
Catron	700	2.9	2030	600	2.9	1750
Grant	3600	3.0	10800	3100	3.8	11700
Hidalgo	3300	4.4	14520	2500	4.0	9900
Luna	2600	4.2	10920	2100	3.4	7080
Sierra	2200	4.6	10120	2000	3.1	6240
Socorro	7700	5.1	39040	11400	4.4	49680
SOUTHWEST DISTRICT	20100	4.35	87430	21700	3.98	86350
Chaves	41400	6.2	256680	41500	5.9	244350
Dona Ana	13600	5.2	70720	18800	4.5	84280
Eddy	35000	6.0	210000	34000	5.2	176800
Lea	7900	4.8	37920	10000	4.4	43670
Lincoln	2200	3.4	7480	2000	2.8	5560
Otero	2300	4.0	9200	2700	4.1	10980
SOUTHEAST DISTRICT	102400	5.78	592000	109000	5.19	565640
STATE	273000	3.84	1049000	293000	3.63	1063000

^{1/} Preliminary

New Mexico Agricultural Statistics

ALFALFA HAY: ACREAGE, YIELD, AND PRODUCTION BY COUNTIES, PRACTICALLY ALL IRRIGATED, 1968 and 1969

County	1968			1969 ^{1/}		
	Acres harvested	Yield per acre	Production	Acres harvested	Yield per acre	Production
	Acres	Tons	Tons	Acres	Tons	Tons
Bernalillo	6600	3.8	25080	6600	4.4	29040
McKinley	900	1.9	1710	800	2.4	1920
Rio Arriba	5400	2.0	10800	5500	1.9	10450
Sandoval	5000	3.0	15000	5900	2.9	17110
San Juan	14000	3.3	46200	14000	3.8	53200
Santa Fe	3800	3.1	11780	4000	2.5	10000
Taos	6000	1.8	10800	5500	2.1	11550
Valencia	13400	4.1	54940	20000	4.2	84000
NORTHWEST DISTRICT	55100	3.20	176310	62300	3.49	217270
Colfax	5600	2.4	13440	9000	1.9	17100
Curry	2200	6.2	13640	2500	5.3	13250
De Baca	3800	5.0	19000	3100	5.0	15500
Guadalupe	800	3.2	2560	1100	2.2	2420
Harding	700	2.4	1680	100	3.2	320
Mora	3200	2.6	8320	5000	2.1	10500
Quay	5600	4.4	24640	5600	4.1	22960
Roosevelt	3200	4.2	13440	3200	4.3	13760
San Miguel	2700	1.3	3510	2700	1.7	4590
Torrance	3000	4.0	12000	4500	4.8	21600
Union	2500	2.9	7250	1600	4.5	7200
NORTHEAST DISTRICT	33300	3.59	119480	38400	3.36	129200
Catron	500	3.1	1550	500	3.2	1600
Grant	2400	3.3	7920	2600	4.0	10400
Hidalgo	3000	4.5	13500	1500	5.0	7500
Luna	1800	4.3	7740	1800	3.6	6480
Sierra	1600	4.7	7520	1600	3.2	5120
Socorro	7200	5.2	37440	9300	4.8	44640
SOUTHWEST DISTRICT	16500	4.59	75670	17300	4.38	75740
Chaves	40900	6.3	256360	38000	6.2	235600
Dona Ana	13000	5.4	70200	14800	5.1	75480
Eddy	34000	6.1	207400	28000	5.8	162400
Lea	7000	5.2	36400	9300	4.5	41850
Lincoln	1800	3.5	6300	800	3.5	2800
Otero	1400	4.2	5880	2100	4.6	9660
SOUTHEAST DISTRICT	98100	5.94	582540	93000	5.68	527790
STATE	203000	4.70	954000	211000	4.50	950000

^{1/} Preliminary

ALFALFA SEED: ACREAGE, YIELD, AND PRODUCTION BY COUNTIES, ALL IRRIGATED, 1968 and 1969

County	1968			1969 ^{1/}		
	Acres harvested	Yield per acre	Production	Acres harvested	Yield per acre	Production
	Acres	Pounds	Pounds	Acres	Pounds	Pounds
NORTHEAST DISTRICT	40	190	7600	60	150	9000
SOUTHWEST DISTRICT	60	285	17100			
Chaves	1620	170	275900	1400	175	245000
Dona Ana	380	280	106400	900	190	171000
Eddy	900	265	238000	1140	180	205000
SOUTHEAST DISTRICT	2900	214	620300	3440	181	621000
STATE	3000	215	645000	3500	180	630000

^{1/} Preliminary

New Mexico Agricultural Statistics

BROOMCORN: ACREAGE, YIELD, AND PRODUCTION, BY COUNTIES, IRRIGATED AND NON-IRRIGATED, 1968

County	Acres planted		Acres harvested		Yield per harvested acre				Production		
	Acres	Irrig.	Acres	Non-Irrig.	Irrig.	Non-Irrig.	Pounds		Irrig.	Non-Irrig.	Total
							Total	Total			
Curry	700	50	500		600	250	280	15	62	77	
Harding	900	50	700		500	240	235	12	83	95	
Quay	7900	380	6820		575	290	305	109	989	1098	
Roosevelt	17900	3000	14300		600	250	310	900	1800	2700	
Union	600	50	130		465	245	300	12	18	30	
NORTHEAST DISTRICT	28000	3530	22470		595	265	305	1048	2952	4000	
STATE	28000	3530	22470		595	265	305	1048	2952	4000	

BROOMCORN: ACREAGE, YIELD, AND PRODUCTION, BY COUNTIES, IRRIGATED AND NON-IRRIGATED, 1969 1/2

County	Acres planted		Acres harvested		Yield per harvested acre				Production		
	Acres	Irrig.	Acres	Non-Irrig.	Irrig.	Non-Irrig.	Pounds		Irrig.	Non-Irrig.	Total
							Total	Total			
Curry	600	50	450		600	280	310	15	63	78	
Harding	1100	50	950		480	280	290	12	133	145	
Quay	8360	400	7100		500	260	270	100	923	1023	
Roosevelt	18360	2900	13600		500	258	300	725	1754	2479	
Union	580	50	450		480	280	300	12	63	75	
NORTHEAST DISTRICT	29000	3450	22530		500	260	290	864	2936	3800	
STATE	29000	3450	22530		500	260	290	864	2936	3800	

1/2 Preliminary

New Mexico Agricultural Statistics

POTATOES: ACREAGE, YIELD AND PRODUCTION, BY COUNTIES, ALL IRRIGATED, 1968 and 1969

County	1968				1969 1/2			
	Acres		Yield per harvested acre	Production	Acres		Yield per harvested acre	Production
	Planted	Harvested			Planted	Harvested		
San Juan	400	390	30	11700	400	350	90	31500
Santa Fe	550	530	200	106000	325	305	190	57950
Valencia	200	200	190	38000	0	0
Other Counties	0	0	75	75	165	12350
NORTHWEST DISTRICT	1150	1120	139	155700	800	730	139	101800
Curry	450	430	225	96800	500	480	190	91200
Torrance	2700	2650	190	503500	1680	1480	165	244200
Other Counties	100	100	180	18000	220	210	194	40800
NORTHEAST DISTRICT	3250	3180	194	618300	2400	2170	173	376200
STATE	4400	4300	180	774000	3200	2900	165	478000

1/2 Preliminary

PEANUTS PICKED AND THRESHED: ACREAGE, YIELD AND PRODUCTION BY COUNTIES, ALL IRRIGATED, 1968 and 1969

County	1968			1969		
	Acres harvested	Yield per acre	Production	Acres harvested	Yield per acre	Production
Curry	20	2695	54000	30	2247	67400
Quay	75	1185	89000	70	1063	74400
Roosevelt	7665	2264	17355000	7420	2307	17118900
NORTHEAST DISTRICT	7760	2255	17498000	7520	2295	17260700
Lea	140	1411	198000	180	1213	218300
SOUTHEAST DISTRICT	140	1411	198000	180	1213	218300
STATE	7900	2240	17696000	7700	2270	17479000

SWEETPOTATOES: ACREAGE, YIELD AND PRODUCTION, BY COUNTIES, ALL IRRIGATED, 1968 AND 1969

County	1968				1969			
	Acres		Yield per harvested acre	Production	Acres		Yield per harvested acre	Production
	Planted	Harvested			Planted	Harvested		
Roosevelt	370	370	110	40700	370	320	95	30400
All other areas	30	30	110	3300	30	30	95	2850
STATE	400	400	110	44000	400	350	95	33250

ALL DRY BEANS: ACREAGE, YIELD, AND PRODUCTION BY COUNTIES, IRRIGATED AND NON-IRRIGATED, 1968

County	Acres planted			Acres harvested			Yield per harvested acre			Production		
	All purposes	Irrig.	Non-Irrig.	Total	Irrig.	Non-Irrig.	Total	Irrig.	Non-Irrig.	Total	100 pound bags	
											Acres	Acres
Bernalillo	100	20	70	90	600	140	240	120	98	218		
McKinley	1200	0	500	500	200	200	1000	1000		
Rio Arriba	40	10	30	40	240	200	210	24	60	84		
Sandoval	20	0	20	20	200	200	40	40		
San Juan	200	200	0	200	700	700	1400	1400		
Santa Fe	70	0	70	70	180	180	126	126		
Taos	100	80	0	80	500	500	400	400		
Valencia	20	20	0	20	500	500	100	100		
NORTHWEST DISTRICT	1750	330	690	1020	620	190	330	2044	1324	3368		
Colfax	100	0	80	80	180	180	144	144		
Curry	80	80	0	80	800	800	640	640		
De Baca	20	20	0	20	600	600	120	120		
Guadalupe	20	20	0	20	600	600	120	120		
Harding	100	0	100	100	190	190	190	190		
Mora	110	20	0	20	500	500	100	100		
Quay	130	100	10	110	340	200	330	340	20	360		
Roosevelt	460	150	310	460	800	130	350	1200	403	1603		
San Miguel	100	20	80	100	500	200	260	100	160	260		
Torrance	1000	250	650	900	640	200	320	1600	1300	2900		
NORTHEAST DISTRICT	2120	660	1230	1890	640	180	340	4220	2217	6437		
Castron	30	0	10	10	250	250	25	25		
Hidalgo	250	250	0	250	1000	1000	2500	2500		
Luna	510	500	0	500	1050	1050	5250	5250		
Socorro	90	90	0	90	600	600	540	540		
SOUTHWEST DISTRICT	880	840	10	850	990	250	980	8290	25	8315		
Chaves	70	70	0	70	1500	1500	1050	1050		
Dona Ana	20	20	0	20	900	900	180	180		
Lea	160	150	0	150	1100	1100	1650	1650		
SOUTHEAST DISTRICT	250	240	0	240	1200	1200	2880	2880		
STATE	5000	2070	1930	4000	840	185	525	17434	3566	21000		

ALL DRY BEANS: ACREAGE, YIELD, AND PRODUCTION, BY COUNTIES, IRRIGATED AND NON-IRRIGATED, 1969 ¹/₁

County	Acres planted			Acres harvested			Yield per harvested acre			Production		
	All purposes	Irrig.	Non-Irrig.	Total	Irrig.	Non-Irrig.	Total	Irrig.	Non-Irrig.	Total	100 pound bags	
											Acres	Acres
Bernalillo	100	20	60	80	300	290	290	60	174	234		
McKinley	1400	0	1000	1000	---	300	300	---	3000	3000		
Rio Arriba	10	0	10	10	---	200	200	---	20	20		
San Juan	150	130	0	130	700	---	700	910	---	910		
Santa Fe	100	0	100	100	---	220	220	---	220	220		
Taos	60	50	0	50	500	---	500	250	---	250		
Valencia	20	20	0	20	650	---	650	130	---	130		
NORTHWEST DISTRICT	1840	220	1170	1390	610	292	343	1350	3414	4764		
Colfax	100	20	60	80	400	200	250	80	120	200		
Curry	80	80	0	80	1000	---	1000	800	---	800		
Guadalupe	60	40	20	60	800	500	700	320	100	420		
Harding	200	0	190	190	---	200	200	---	380	380		
Mora	50	10	40	50	500	220	276	50	88	138		
Roosevelt	470	40	360	400	900	300	360	360	1080	1440		
San Miguel	100	30	50	80	550	200	331	165	100	265		
Torrance	1300	600	600	1200	700	200	450	4200	1200	5400		
Union	220	20	180	200	600	210	254	130	378	508		
NORTHEAST DISTRICT	2580	840	1500	2340	727	230	408	6105	3446	9551		
Hidalgo	500	500	0	500	870	---	870	4350	---	4350		
Luna	500	500	0	500	930	---	930	4650	---	4650		
Sierra	20	20	0	20	800	---	800	160	---	160		
Socorro	40	40	0	40	700	---	700	280	---	280		
SOUTHWEST DISTRICT	1060	1060	0	1060	891	---	891	9440	---	9440		
Chaves	460	150	0	150	1100	---	1100	1650	---	1650		
Dona Ana	40	40	0	40	1000	---	1000	400	---	400		
Eddy	10	10	0	10	1200	---	1200	120	---	120		
Lincoln	10	10	0	10	750	---	750	75	---	75		
SOUTHEAST DISTRICT	520	210	0	210	1069	---	1069	2245	---	2245		
STATE	6000	2330	2670	5000	821	257	530	19140	6860	26000		

¹/ Preliminary

New Mexico Agricultural Statistics

LETTUCE-EARLY SPRING: ACREAGE, YIELD, AND PRODUCTION, BY COUNTIES, ALL IRRIGATED, 1968 and 1969

County	1968				1969			
	Acres		Yield per	Production	Acres		Yield per	Production
	Planted	Harvested	harvested acre		Planted	Harvested	harvested acre	
	Acres	Acres	Cwt.	Cwt.	Acres	Acres	Cwt.	Cwt.
Bernalillo	20	20	240	4800	20	20	220	4400
Valencia	140	140	230	32200	200	200	190	38000
NORTHWEST DISTRICT	160	160	231	37000	220	220	193	42400
Luna, Sierra, & Socorro	380	370	258	95500	800	610	150	91600
SOUTHWEST DISTRICT	380	370	258	95500	800	610	150	91600
Dona Ana	4760	4670	250	1167500	3980	3970	148	586000
SOUTHEAST DISTRICT	4760	4670	250	1167500	3980	3970	148	586000
STATE	5300	5200	250	1300000	5000	4800	150	720000

LETTUCE-EARLY FALL: ACREAGE, YIELD, AND PRODUCTION, BY COUNTIES, ALL IRRIGATED, 1968 and 1969

County	1968				1969			
	Acres		Yield per	Production	Acres		Yield per	Production
	Planted	Harvested	harvested acre		Planted	Harvested	harvested acre	
	Acres	Acres	Cwt.	Cwt.	Acres	Acres	Cwt.	Cwt.
Bernalillo	20	20	200	4000	20	20	190	3800
Valencia	150	150	220	33000	230	200	180	36000
NORTHWEST DISTRICT	170	170	218	37000	250	220	181	39800
Torrance	910	750	220	165000	850	700	180	126000
NORTHEAST DISTRICT	910	750	220	165000	850	700	180	126000
Luna, Sierra, & Socorro	460	450	280	126000	700	630	197	124200
SOUTHWEST DISTRICT	460	450	280	126000	700	630	197	124200
Dona Ana	5260	5030	221	1112000	3800	3550	220	781000
SOUTHEAST DISTRICT	5260	5030	221	1112000	3800	3550	220	781000
STATE	6800	6400	225	1440000	5600	5100	210	1071000

TOMATOES FOR PROCESSING: ACREAGE, YIELD, AND PRODUCTION, BY COUNTIES, ALL IRRIGATED, 1968 and 1969

County	1968				1969			
	Acres		Yield per	Production	Acres		Yield per	Production
	Planted	Harvested	harvested acre		Planted	Harvested	harvested acre	
	Acres	Acres	Tons	Tons	Acres	Acres	Tons	Tons
Luna	---	---	---	---	200	150	12.0	1800
SOUTHWEST DISTRICT	---	---	---	---	200	150	12.0	1800
Dona Ana	---	---	---	---	800	650	12.0	7800
Otero	---	---	---	---	---	---	---	---
SOUTHEAST DISTRICT	1100	900	14.0	12600	800	650	12.0	7800
STATE	1100	900	14.0	12600	1000	800	12.0	9600

New Mexico Agricultural Statistics

ONIONS-EARLY SUMMER: ACREAGE, YIELD AND PRODUCTION, BY COUNTIES, ALL IRRIGATED, 1968 and 1969

County	1968				1969			
	Acres		Yield per	Production	Acres		Yield per	Production
	Planted	Harvested	harvested acre		Planted	Harvested	harvested acre	
	Acres	Acres	Cwt.	Cwt.	Acres	Acres	Cwt.	Cwt.
Bernalillo	40	40	250	1000	30	30	240	7200
Santa Fe	20	20	270	5400	20	20	280	5600
Valencia	300	270	290	78200	100	90	270	24300
NW DISTRICT	360	330	284	93600	150	140	265	37100
Roosevelt	120	110	290	31900	80	80	285	22800
NE DISTRICT	120	110	290	31900	80	80	285	22800
Luna & Sierra	200	170	285	48400	70	70	280	19600
Socorro	50	50	290	14500	30	30	280	8400
SW DISTRICT	250	220	286	62900	100	100	280	28000
Chaves	---	---	---	---	50	50	280	14000
Dona Ana	3400	3100	305	945500	2970	2800	275	770000
Eddy	100	90	290	26100	50	50	290	14500
Lea	270	250	280	70000	200	180	270	48600
SE DISTRICT	3770	3440	303	1041600	3270	3080	275	847100
STATE	64500	4100	300	1230000	3600	3400	275	935000

APPLES: TREES 1968 AND PRODUCTION 1968 AND 1969

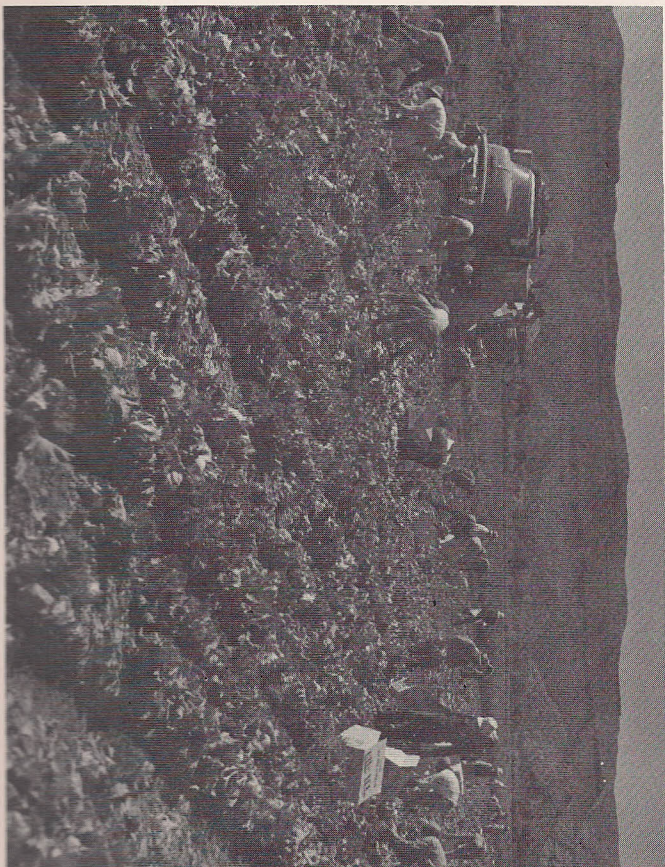
County	Total trees 1/		Production 2/	
	1968	1968	1968	1969 3/
	Number	Pounds	Pounds	Pounds
Bernalillo	9000	690000	630000	
Rio Arriba	93000	8890000	4640000	
Sandoval	19400	1550000	3360000	
San Juan	34200	7240000	6720000	
Santa Fe	17400	2228000	4200000	
Valencia	8400	1040000	420000	
NW DISTRICT	181400	21638000	19970000	
De Baca	3200	400000	630000	
NE DISTRICT	3200	400000	630000	
Grant	12300	920000	2100000	
Sierra	1410	280000	160000	
SW DISTRICT	13710	1200000	2260000	
Chaves, Dona Ana, & Otero	39690	4372000	840000	
Lincoln	44000	8890000	6300000	
SE DISTRICT	83690	13262000	7140000	
STATE	282000	36500000	30000000	

1/ Orchards of 100 or more trees.

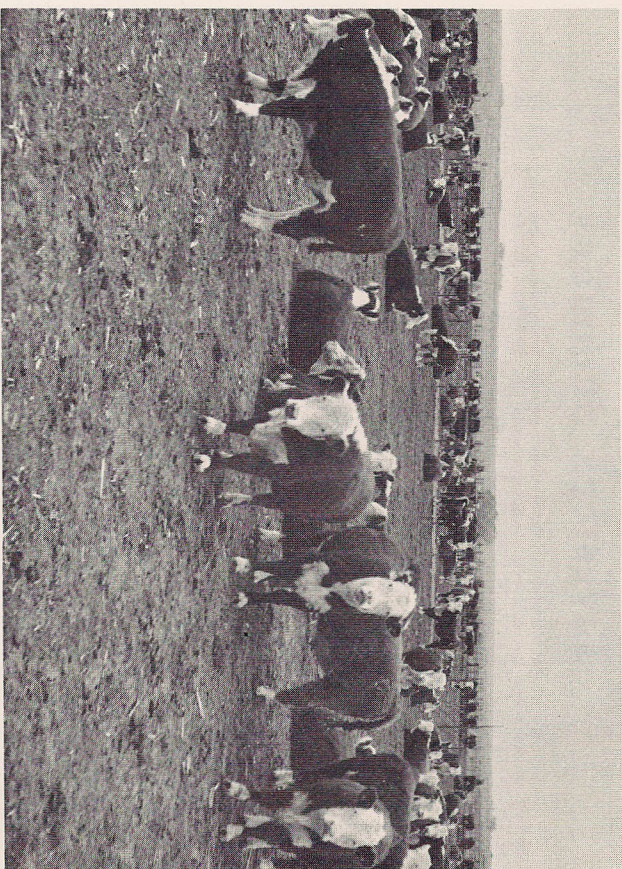
2/ Equivalent to 42 pound bushel.

3/ Preliminary.

New Mexico Agricultural Statistics



New Mexico Agricultural Statistics



Livestock Summary

Marketings of cattle and calves reached an all time high value during 1969 for New Mexico ranchers and farmers. The cash receipts of \$256,526,000 from cattle and calves exceeded the previous high in 1968 of \$181,087,000. Numerous factors were at work in setting the record level, several of which were higher prices, heavier weights and increased numbers sold.

Expansion of the cattle feeding industry slowed from the previous year but resumed with additional construction of pens since January 1, 1970. The inventory on January 1, 1970 was 209,000 head, equal to the January 1, 1969 level, but well above the 185,000 head on feed January 1, 1968. The tables on pages 36 and 37, showing the number of feedlots by size groups along with marketings and cattle weight group inventories, tells the story of the shift to larger feedlots. The largest increases in number on feed January 1970 occurred in Chaves County and totaled 13,000 head.

The January 1, 1970 inventory of stock cattle was up 3 percent from 1969. The increase was partly the result of ranchers holding back some of their calves in hopes that prices might go up. It also reflects a slight reversal of a trend started several years ago as some operations are now going back to cow-calf operations instead of summer grazing of steers and heifers. The inventory is as of January 1 and does not include the steers and heifers that moved out of state during the heavy October-November shipping season.

The January 1, 1970 inventory of dairy cattle remained unchanged from January 1 the previous year. During 1969 milk production totaled 308 million pounds, a decrease of 7 million pounds from the previous year. Production per cow, however, continued to increase and established a new high of 8556 pounds compared to 8290 the previous year.

Feeder lamb prices were quite favorable to the growers at the end of 1969. Even with a good demand for lambs by surrounding states, several thousand more were on feed in New Mexico than January 1, 1969. A total of 43,000 head were on feed January 1, 1970 compared to 41,000 head January 1, 1969. Stock sheep numbers continued their historical decline during 1969. As of January 1, 1970 there were 834,000 head on hand, 6,000 head less than the previous year. Shorn wool production during 1969 totaled 7,096,000 pounds, 278,000 pounds less than the previous year. Shorn wool produced income for New Mexico growers of \$3,122,000 excluding incentive payments.

Hog inventories remained unchanged from the previous year. There was, however, considerable change within the industry as there was a continuing shift to larger sized operations. Many of the smaller operations went out of business. Expansion in general of the disease-free controlled environment operations took place.

The chicken inventory in New Mexico increased considerably during 1969. Most of the change was attributed to expansion of several producers while others left the industry. The inventory at the close of the year was 1,223,000 head compared to 963,000 a year earlier. Hens and pullets of laying age accounted for 934,000 head of the total.

Red meat production from New Mexico slaughter plants under Federal and State inspection totaled 202,851,000 pounds compared to 190,525,000 pounds during 1968. The number of head slaughtered during 1969 and 1968 respectively are as follows: Cattle: 333,300 and 313,800; hogs: 106,400 and 105,300; sheep: 60,400 and 62,800; calves: 0 and 900.

LIVESTOCK AND POULTRY: NUMBER ON FARMS AND RANCHES, VALUE PER HEAD, AND TOTAL VALUE, 1969-1970

Class	Number		Value per Head		Total Value	
	1969	1970 ^{1/}	1969	1970 ^{1/}	1969	1970 ^{1/}
	1,000 head	1,000 head	Dollars	Dollars	Dollars	Dollars
ALL CATTLE ^{2/}	1346.....	1386.....	145.00.....	170.00.....	195170.....	235620.....
KEPT FOR MILK	58	55	----	----	----	----
Cows 2 yrs. and over	39	39	215.00	260.00	8385	10140
Heifers 1-2 years	9	8	----	----	----	----
Heifer Calves	10	8	----	----	----	----
BEEF CATTLE	1288	1331	----	----	----	----
Cows 2 yrs. and over	690	708	----	----	----	----
Heifers 1-2 years	136	147	----	----	----	----
Calves	303	315	----	----	----	----
Steers 1 yr. and over	135	136	----	----	----	----
Bulls 1 yr. and over	24	25	----	----	----	----
CHICKENS:	963.....	1223.....	0.96.....	1.20.....	924.....	1468.....
Hens and pullets of laying age	741	934	----	----	----	----
Other	222	289	----	----	----	----
ALL SHEEP AND LAMBS:	840.....	834.....	----	----	----	----
ON FEED	41	43	----	----	----	----
STOCK SHEEP	799	791	20.50	23.50	16380	18589
LAMBS						
Ewes	133	139	----	----	----	----
Wethers and Rams	18	18	----	----	----	----
1 YEAR AND OLDER						
Ewes	616	600	----	----	----	----
Rams	28	30	----	----	----	----
Wethers	4	4	----	----	----	----
HOGS AND PIGS	48.....	48.....	22.50.....	30.10.....	1080.....	1445.....

^{1/} Preliminary.

^{2/} Includes January 1 Cattle On Feed Inventory.

LIVESTOCK: INVENTORY NUMBERS, BIRTHS, AND DISPOSITION, 1967, 1968, and 1969

CATTLE AND CALVES

Year	On hand January 1		Calves born		Inshipments	Marketings		Farm slaughter	Deaths	
	All cattle and calves	All cows 2 years and older	Number	As percentage of cows 2 yrs. and older ^{1/}		Cattle	Calves	Cattle and Calves	Cattle	Calves
	1,000 head	1,000 head	1,000 head	Percent		1,000 head	1,000 head	1,000 head	1,000 head	1,000 head
1967	1333	737	649	88	427	736	262	7	18	40
1968	1346	736	633	86	466	757	279	7	18	38
1969	1346	729	634	87	708	964	279	5	24	30

SHEEP AND LAMBS

Year	On hand January 1	Lambs saved		Inshipments	Marketings ^{2/}		Farm slaughter	Deaths		
		Number	As percent of ewes 1 year and older		Sheep and Lambs	Sheep	Lambs	Sheep and Lambs	Sheep	Lambs
		1,000 head	1,000 head		Percent	1,000 head	1,000 head	1,000 head	1,000 head	1,000 head
1967	955	502	75	55	142	277	35	105	80	
1968	873	512	81	52	103	289	35	90	80	
1969	840	478	78	45	91	236	40	82	80	

HOGS AND PIGS

Year	On hand January 1	December-May		June-November		Disposition			
		Sows farrowed	Pig crop	Sows farrowed	Pig crop	Inshipments	Marketings ^{2/}	Farm slaughter	Deaths
		1,000 head	1,000 head	1,000 head	1,000 head	1,000 head	1,000 head	1,000 head	1,000 head
1967	38	5.0	35	5.0	35	3	62	5	4
1968	42	5.4	40	5.6	42	4	71	5	4
1969	48	6.5	46	6.1	45	3	85	5	4

^{1/} Not strictly a calving rate. Figure represents calves born expressed as a percentage of January 1 inventory of cows and heifers 2 years old and over and not the number of all cows and heifers giving birth to calves during the year.
^{2/} Excludes inter-farm sales, but includes animals custom slaughtered for use on farms where produced.

LIVESTOCK: PRODUCTION AND INCOME, 1967, 1968, 1969

CATTLE AND CALVES

Year	Production ^{1/}	Marketings ^{2/}	Price per 100 pounds		Value of production	Cash receipts ^{3/}	Value of home consumption	Gross income	Cost of inshipments
	1,000 pounds	1,000 pounds	Cattle	Calves	1,000 dollars	1,000 dollars	1,000 dollars	1,000 dollars	1,000 dollars
			Dollars	Dollars					
1967	473700	704980	23.20	26.40	113097	166709	1681	169390	55971
1968	469210	725361	24.40	28.10	118276	181087	1586	182673	64056
1969	521390	914200	27.60	31.30	148290	256526	1498	258024	114696

SHEEP AND LAMBS

Year	Production ^{1/}	Marketings ^{2/}	Price per 100 pounds		Value of production	Cash receipts ^{3/}	Value of home consumption	Gross income	Cost of inshipments
	1,000 pounds	1,000 pounds	Sheep	Lambs	1,000 dollars	1,000 dollars	1,000 dollars	1,000 dollars	1,000 dollars
			Dollars	Dollars					
1967	27356	37456	7.10	22.20	4825	5957	359	6316	411
1968	33466	34385	7.70	23.90	6318	6368	402	6770	400
1969	28185	29320	8.10	27.70	6205	6078	567	6645	449

HOGS

Year	Production ^{1/}	Marketings ^{2/}	Price per 100 pounds		Value of production	Cash receipts ^{3/}	Value of home consumption	Gross income	Cost of inshipments
	1,000 pounds	1,000 pounds	Dollars		1,000 dollars	1,000 dollars	1,000 dollars	1,000 dollars	1,000 dollars
1967	15024	13187	19.20		2885	2532	353	2885	43
1968	18043	15490	18.30		3302	2835	373	3208	55
1969	20809	18841	22.00		4578	4145	502	4647	53

^{1/} Adjustments made for inshipments and changes in inventory.
^{2/} Excludes inter-farm sales.
^{3/} Includes receipts from marketings and from sales of farm-slaughtered meat.

NUMBER OF CATTLE FEEDLOTS AND FED CATTLE MARKETED BY SIZE OF FEEDLOT CAPACITY
1963-1969 1/

Year	Under 1,000 head		1,000-3,999 head		4,000-7,999 head		8,000-15,999 head		16,000 and over head		Total all Feedlots	
	Lots	Cattle Mkted.	Lots	Cattle Mkted.	Lots	Cattle Mkted.	Lots	Cattle Mkted.	Lots	Cattle Mkted.	Lots	Cattle Mkted.
	No.	1,000 head	No.	1,000 head	No.	1,000 head	No.	1,000 head	No.	1,000 head	No.	1,000 head
1963	98	14	23	43	8	24	5	64	---	---	134	145
1964	100	17	23	57	7	22	5	70	---	---	135	166
1965	91	11	30	49	6	21	2/ 8	2/ 92	---	---	135	173
1966	83	10	32	50	11	32	2/ 9	2/112	---	---	135	204
1967	52	12	32	36	11	50	2/11	2/140	---	---	106	238
1968	36	10	22	56	6	45	8	82	4	123	76	316
1969	27	7	18	32	9	53	10	123	4	145	68	360

1/ Number of feedlots with 1,000-head or more capacity is number of lots operating any time during year. Number under 1,000-head capacity and total number of all feedlots is number at end of year.

2/ Lots and marketings from larger size groups are included to avoid disclosing individual operations.

CATTLE ON FEED: NUMBER ON FEED, PLACEMENTS, AND MARKETINGS, BY QUARTERS, 1967-1970

Year	NUMBER ON FEED				PLACED ON FEED				NUMBER MARKETED			
	Jan. 1	Apr. 1	July 1	Oct. 1	Jan. 1- March 31	Apr. 1- June 30	July 1- Sept. 30	Oct. 1- Dec. 31	Jan. 1- March 30	Apr. 1- June 30	July 1- Sept. 30	Oct. 1- Dec. 31
	--- 1,000 Head ---				--- 1,000 Head ---				--- 1,000 Head ---			
1967	140	153	134	126	63	46	63	111	50	65	71	52
1968	185	170	147	160	67	63	94	116	82	86	81	67
1969	209	192	195	187	76	100	89	95	93	97	97	73
1970	209	194	---	---	91	--	--	---	106	--	--	--

CATTLE AND CALVES ON FEED: NUMBER ON FEED BY WEIGHT GROUPS, CLASSES, AND LENGTH OF TIME, BY QUARTERS, 1967-70

Year and Month	Number on feed by weight groups					Number on feed by classes			Number on feed by time			
	Under 500 pounds	500-699 pounds	700-899 pounds	900-1099 pounds	1100 pounds and over	Steers and steer calves	Heifers and heifer calves	Cows and others	Less than 3 months	3 to 6 months	6 months and over	
	-----Thousand Head-----											
1967												
January 1	25	43	49	21	2	87	50	3	76	46	18	
April 1	18	56	48	29	2	78	72	3	62	74	17	
July 1	13	40	54	26	1	72	61	1	44	56	34	
October 1	29	40	29	27	1	74	52	-	63	40	23	
1968												
January 1	22	66	69	25	3	103	80	2	110	60	15	
April 1	15	65	53	34	3	93	75	2	65	88	17	
July 1	12	45	61	28	1	81	64	2	62	59	26	
October 1	24	62	45	24	5	96	63	1	94	53	13	
1969												
January 1	30	71	73	28	7	130	77	2	115	79	15	
April 1	14	60	74	43	1	119	71	2	75	86	31	
July 1	19	68	62	43	3	109	85	1	100	70	25	
October 1	23	55	75	29	5	104	82	1	88	84	15	
1970												
January 1	29	55	83	39	3	124	81	4	94	86	29	
April 1 1/	18	72	54	47	3	117	74	3	89	91	14	

1/ Preliminary.

LIVESTOCK SLAUGHTER: NUMBER SLAUGHTERED, AVERAGE AND TOTAL LIVELWEIGHT, BY SPECIES, 1967, 1968 AND 1969

Year	Cattle			Calves			Hogs			Sheep and Lambs		
	Number	Average liveweight per head	Total live-weight	Number	Average liveweight per head	Total live-weight	Number	Average liveweight per head	Total live-weight	Number	Average liveweight per head	Total live-weight
	1,000 head	Pounds	1,000 pounds	1,000 head	Pounds	1,000 pounds	1,000 head	Pounds	1,000 pounds	1,000 head	Pounds	1,000 pounds
1967	288.2	962	277289	1.3	486	632	100.1	230	23061	44.5	106	4698
1968	313.8	965	302890	.9	490	441	105.3	232	24460	62.8	110	6886
1969	333.3	973	324160	---	---	---	106.4	236	25080	60.4	110	6628

FARM CHICKENS: NUMBER RAISED, PRODUCED, DISPOSITION, AND INCOME, 1967, 1968 AND 1969 1/

Year	Raised 2/ 1,000 head	Lost 3/ 1,000 head	Produced 4/ 1,000 head	Consumed In Farm Household 1,000 head	Sold 1,000 head	Pounds Produced 4/ 1,000 pounds	Pounds Consumed In Farm Household 1,000 pounds	Pounds Sold 1,000 pounds	Price Per Pound Cents	Value of Production 1,000 dollars	Cash Receipts 1,000 dollars	Value of Chickens Consumed 1,000 dollars	Gross Income 1,000 dollars
1967	787	147	640	81	524	2829	267	2253	8.2	232	185	22	207
1968	771	145	626	73	524	2537	248	2201	9.8	249	216	24	240
1969 5/	964	243	721	66	395	2865	231	1620	10.0	286	162	23	185

1/ Does not include commercial broilers. 2/ Does not include young chickens lost. 3/ Loss during the year of chickens on hand January 1.
4/ Production is the number (or pounds) available for utilization during the year. 5/ Preliminary.

CHICKENS AND EGGS: CHICKENS RAISED, AVERAGE NUMBER OF LAYERS ON HAND, EGG PRODUCTION, PRICE, AND INCOME, 1967, 1968 AND 1969

Year	Chickens Raised 1,000 head	Average Yearly Number of Layers on Hand 1,000 head	Eggs Produced 1,000,000 eggs	Eggs Consumed in Farm Household 1,000,000 eggs	Eggs Sold 1,000,000 eggs	Price Per Dozen Cents	Cash Receipts 1,000 dollars	Value of Eggs Consumed in Farm Household 1,000 dollars	Gross Income 1,000 dollars
1967	787	700	145	6	139	37.5	4344	188	4532
1968	771	722	159	5	154	39.9	5120	166	5286
1969 1/	964	858	192	5	187	43.3	6748	180	6928

1/ Preliminary.

MILK: PRODUCTION, DISPOSITION, PRICE AND INCOME, 1967, 1968 AND 1969

Year	Milk Cows on Farms 1/ 1,000 head	Milk Production Per Cow 2/ Pounds	Total Milk Production 2/ Million pounds	Disposition of Milk Produced				Value of Sales (Receipts From Farm Marketing) 1,000 dollars	Gross Farm Income From Dairy Products 1,000 dollars	
				Used on Farms Where Produced Million pounds	Sold Wholesale		Milk and Cream Retailled by Farmer Milk Equiv- alent Per Quart Million quarts			
					Whole Milk Million pounds	Price Per 100 pounds Dollars				
1967	38	8080	307	14	260	5.80	15	24.3	18725	19364
1968	38	8290	315	13	266	5.86	17	27.1	20195	20797
1969 3/	36	8556	308	12	258	6.18	18	27.5	20894	21459

1/ Average number on farms during year, excluding heifers not yet fresh. 2/ Excludes milk sucked by calves. 3/ Preliminary.

WOOL: NUMBER OF SHEEP SHORN, FLEECE WEIGHT, PRODUCTION, PRICE AND VALUE, 1967, 1968, AND 1969

Year	Sheep Shorn 1/ 1,000 head	Average weight of Fleece Pounds	Production 1,000 pounds	Price per Pound Cents	Total Value 1,000 dollars
1967	884	9.6	8462	39.0	3300
1968	806	9.1	7374	43.0	3171
1969 2/	774	9.2	7096	44.0	3122

1/ Includes shearing at commercial feeding yards.
2/ Preliminary.

MOHAIR: NUMBER OF GOATS CLIPPED, FLEECE WEIGHT, PRODUCTION, PRICE, AND VALUE, 1967, 1968, AND 1969

Year	Goats Clipped 1,000 head	Average weight of Fleece Pounds	Production 1,000 pounds	Price per Pound Cents	Total Value 1,000 dollars
1967	61	4.2	259	36.0	93
1968	61	4.1	249	43.0	107
1969 1/	55	3.9	214	42.0	90

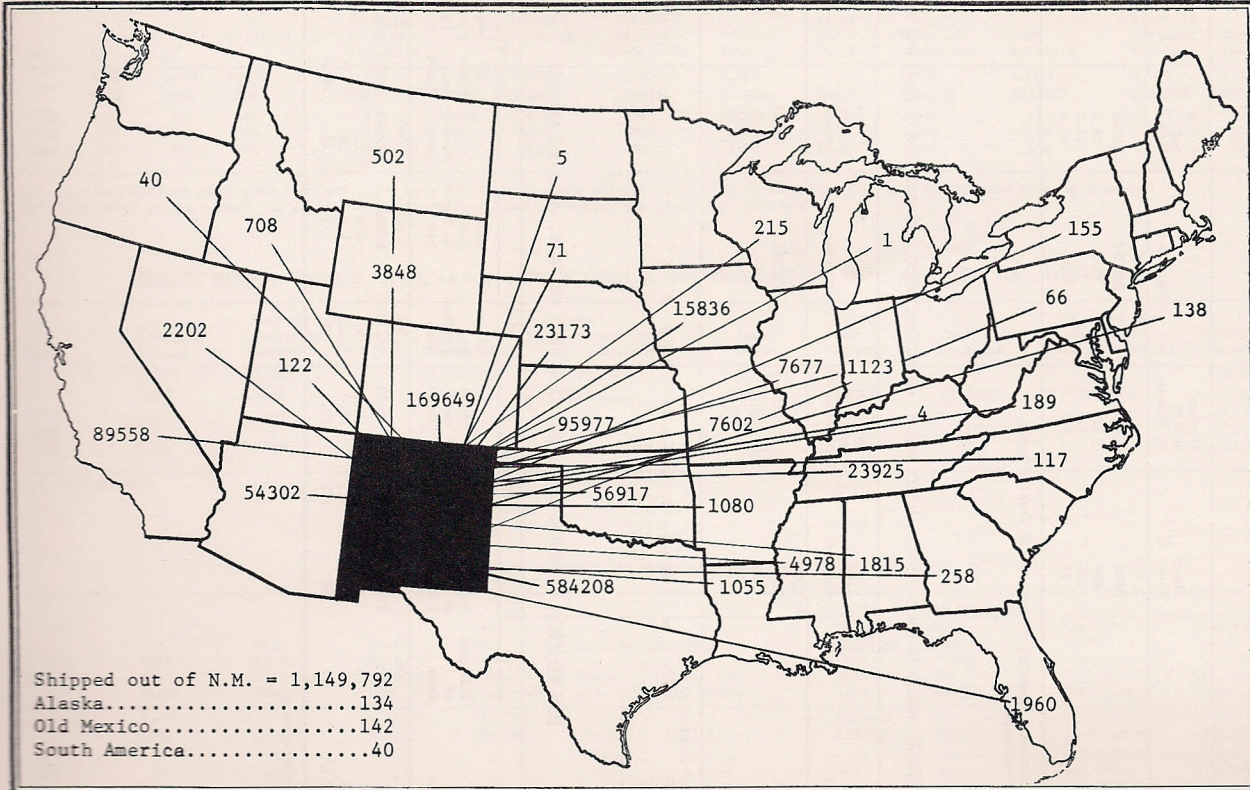
1/ Preliminary.

BEES AND HONEY: COLONIES, YIELD, PRODUCTION, PRICE AND VALUE, 1967, 1968 AND 1969

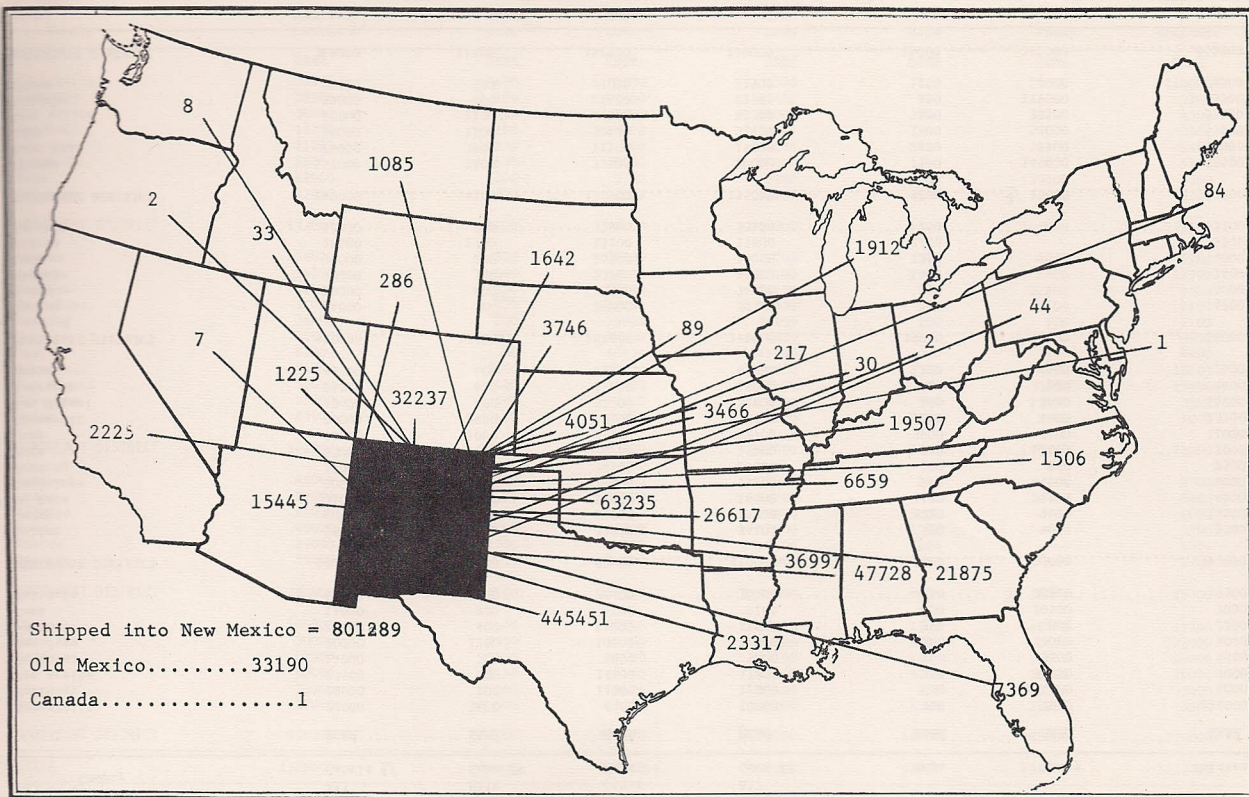
Year	Colonies of Bees	Pound per Colony	Honey		Beehive				
			Production 1,000 pounds	Price per Pound Cents	Value of Production 1,000 dollars	Production 1,000 pounds	Price per Pound Cents	Value of Production 1,000 dollars	
1967	15	54	810	12.0	97	178	12	55.0	7
1968	15	61	915	11.0	101	146	18	65.0	12
1969 1/	15	48	720	13.0	94	72	12	58.0	7

1/ Preliminary.

CATTLE SHIPPED OUT OF NEW MEXICO BY STATE OF DESTINATION, 1969



CATTLE SHIPPED INTO NEW MEXICO BY STATE OF ORIGIN, 1969 ^{1/}



^{1/} Includes shipments to the Clovis yards.

LIVESTOCK INVENTORY: NUMBER ON FARMS, BY COUNTIES, JANUARY 1, 1969

County	All Cattle ^{1/}	Milk Cows 2+	Other Cows 2+	All Cows 2+	Hogs	Sheep	Chickens
	Head	Head	Head	Head	Head	Head	Head
Bernalillo	22000	3600	6400	10000	700	7000	144000
McKinley	18000	100	11900	12000	450	124000	4000
Rio Arriba	27000	400	17400	17800	250	39000	7000
Sandoval	14000	200	9600	9800	200	9500	4500
San Juan	20000	1200	10800	12000	600	77000	9000
Santa Fe	22000	400	11200	11600	350	800	7200
Taos	11000	200	5900	6100	600	20500	7000
Valencia	46000	4300	26400	30700	850	28200	9300
NORTHWEST DISTRICT	180000	10400	99600	110000	4000	306000	192000
Colfax	58000	300	33800	34100	500	4000	5700
Curry	68000	600	14900	15500	3400	2400	14500
De Baca	31000	300	16300	16600	1100	22500	4000
Guadalupe	30000	200	19000	19200	200	44000	4000
Harding	35000	200	24100	24300	100	900	2500
Mora	23000	500	14700	15200	100	12000	5000
Quay	72000	1000	41700	42700	3900	3400	11000
Roosevelt	73000	8900	29100	38000	7300	4000	13200
San Miguel	50000	400	32400	32800	400	3500	16200
Torrance	25000	600	17400	18000	900	27800	4400
Union	85000	400	41200	41600	1100	1500	7500
NORTHEAST DISTRICT	550000	13400	284600	298000	19000	126000	88000
Catron	44000	300	29800	30100	150		4200
Grant	50000	400	33600	34000	450		4000
Hidalgo	40000	300	23700	24000	4400		2400
Luna	36000	200	15800	16000	1350		4000
Sierra	28000	2700	15100	17800	2400		5200
Socorro	50000	200	32900	33100	250		3200
SOUTHWEST DISTRICT	248000	4100	150900	155000	9000	3/ 18000	23000
Chaves	157000	2400	27600	30000	7100	149000	18500
Dona Ana	28000	3900	11100	15000	2400	2500	559000
Eddy	56000	1800	30600	32400	1500	53000	53000
Lea	62000	2100	41200	43300	3450	33500	23000
Lincoln	33000	400	22400	22800	350	129000	3000
Otero	32000	500	22000	22500	1200	23000	3500
SOUTHEAST DISTRICT	368000	11100	154900	166000	16000	390000	660000
STATE	1346000	39000	690000	729000	48000	840000	963000

^{1/} Includes all milk cows.

^{2/} District total includes counties for which separate estimates were not made.

LIVESTOCK INVENTORY: NUMBER ON FARMS, BY COUNTIES, JANUARY 1, 1970 ^{1/}

County	All cattle ^{2/}	Milk cows 2+	Other cows 2+	All cows 2+	Hogs	Sheep	Chickens
	Head	Head	Head	Head	Head	Head	Head
Bernalillo	23000	3600	5900	9500	700	6800	216000
McKinley	19000	100	11500	11600	400	123000	3100
Rio Arriba	30000	400	17600	18000	200	38500	4500
Sandoval	16000	200	10100	10300	200	9500	3600
San Juan	21000	1200	11000	12200	550	76100	6800
Santa Fe	25000	400	10000	10400	400	800	5900
Taos	12000	200	5700	5900	600	20300	4900
Valencia	47000	4300	26800	31100	950	28000	6200
NORTHWEST DISTRICT	193000	10400	98600	109000	4000	303000	253000
Colfax	56000	300	32400	32700	500	4000	5700
Curry	66000	600	14500	15100	2500	2400	12700
De Baca	32000	300	15900	16200	800	22300	2500
Guadalupe	31000	200	18600	18800	200	43500	2500
Harding	36000	200	23900	24100	100	900	2100
Mora	21000	500	15300	15800	100	12000	3900
Quay	65000	1000	40900	41900	3900	3400	9400
Roosevelt	74000	8900	27000	35900	8500	4000	16500
San Miguel	52000	400	34400	34800	400	3500	13400
Torrance	25000	600	17900	18500	900	27500	3500
Union	83000	400	42800	43200	1100	1500	6800
NORTHEAST DISTRICT	541000	13400	283600	297000	19000	125000	79000
Catron	46000	300	31000	31300	150	----	3700
Grant	50000	400	35300	35700	450	----	3600
Hidalgo	41000	300	23500	23800	5000	----	2000
Luna	40000	200	17500	17700	1350	----	3500
Sierra	29000	2700	14900	17600	1800	----	4500
Socorro	55000	200	36700	36900	250	----	2700
SOUTHWEST DISTRICT	261000	4100	158900	163000	9000	3/ 18000	20000
Chaves	166000	2400	30500	32900	7300	148600	19500
Dona Ana	30000	3900	11500	15400	2600	2500	773000
Eddy	62000	1800	34300	36100	1400	52600	50000
Lea	68000	2100	44100	46200	3150	33300	24000
Lincoln	33000	400	23000	23400	350	128100	3000
Otero	32000	500	23500	24000	1200	22900	3500
SOUTHEAST DISTRICT	391000	11100	166900	178000	16000	388000	873000
STATE	1386000	39000	708000	747000	48000	834000	1223000

^{1/} Preliminary.

^{2/} Includes all milk cows.

^{3/} District total includes counties for which separate estimates were not made.

New Mexico Agricultural Statistics

SHEEP ON FEED: NUMBER ON FEED, BY COUNTIES, JANUARY 1, 1966-1970

County	1966		1967		1968		1969		1970 1/	
	Head	Head	Head	Head	Head	Head	Head	Head	Head	Head
NORTHWEST DISTRICT	1300	1000	1400	1400	1400	1400	1400	1400	1400	500
NORTHEAST DISTRICT	500	5500	2100	2000	2000	2000	2000	2000	2000	5000
SOUTHWEST DISTRICT	0	0	0	600	600	600	600	600	600	100
Chaves	41200	46000	35000	30000	30000	30000	30000	30000	30000	31500
Eddy	3500	5700	4000	2/	2/	2/	2/	2/	2/	2/
Lea	1400	7200	6000	2/	2/	2/	2/	2/	2/	2/
Lincoln	5000	2600	1500	7000	7000	7000	7000	7000	7000	5900
Other Counties	0	61500	46500	37000	37000	37000	37000	37000	37000	37400
SOUTHEAST DISTRICT	50200	68000	50000	41000	41000	41000	41000	41000	41000	43000
STATE	32000	68000	50000	41000	41000	41000	41000	41000	41000	43000

1/ Preliminary.
2/ Eddy and Lincoln County data combined to eliminate disclosure of individual operations.

CATTLE ON FEED: NUMBER OF FEEDLOTS, CAPACITY, NUMBER ON FEED, BY COUNTIES AND QUARTERS, JANUARY 1, 1967-APRIL 1, 1970

County	Number of Feedlots January 1, 1970	One Time Capacity January 1, 1970		Jan. 1 1967		Jan. 1 1968		Apr. 1 1969		July 1 1969		Oct. 1 1969		Jan. 1 1970		Apr. 1 1970 1/	
		Head	Head	Head	Head	Head	Head	Head	Head	Head	Head	Head	Head	Head	Head	Head	Head
NORTHWEST DISTRICT 2/	3	19000	12300	13600	12800	11700	8600	13100	13200	41200	34900	8100	6300	23500	21900	6800	6800
Curry	9	55000	42400	44700	38000	40000	35900	41200	34900	8100	6300	23500	21900	6800	6800	6800	6800
Roosevelt	5	10000	7000	8900	8200	6100	8500	8100	8500	8100	8500	8100	8500	8100	8500	8100	8500
Other Counties 3/	6	31000	23100	26200	23800	26400	22600	23500	21900	6800	6800	6800	6800	6800	6800	6800	6800
NORTHEAST DISTRICT	20	96000	72500	79800	70000	72500	67000	72800	63100	67000	72800	63100	67000	72800	63100	67000	72800
SOUTHWEST DISTRICT 4/	10	9000	7300	5600	3800	3900	4800	6000	5600	4800	6000	5600	4800	6000	5600	4800	6000
Chaves	22	113000	80000	93000	89500	87700	89100	93800	90900	93800	90900	93800	90900	93800	90900	93800	90900
Doña Ana	11	11000	4500	5800	5800	6300	7000	6600	7000	6600	7000	6600	7000	6600	7000	6600	7000
Eddy	5	12000	3500	8100	5000	7600	6500	6900	7800	6500	6900	7800	6500	6900	7800	6500	6900
Lea	5	10000	3000	4400	5100	5300	4300	9400	6800	9400	6800	9400	6800	9400	6800	9400	6800
SOUTHEAST DISTRICT	43	146000	92900	110000	105400	106900	106600	117100	112100	106600	117100	112100	106600	117100	112100	106600	117100
STATE	76	270000	185000	209000	192000	195000	187000	209000	194000	187000	209000	194000	187000	209000	194000	187000	209000

1/ Preliminary. 2/ Includes Bernalillo and Santa Fe. 3/ Includes De Baca, Quay and Union. 4/ Includes Grant, Luna, Sierra, Socorro, Lincoln, and Otero.

New Mexico Agricultural Statistics

PRICES RECEIVED BY FARMERS AND RANCHERS:
PRINCIPAL CROPS, LIVESTOCK, AND LIVESTOCK PRODUCTS, BY MONTHS, AND YEARS, 1965-1969

Year	Jan.	Feb.	Mar.	Apr.	May	June	July	Aug.	Sept.	Oct.	Nov.	Dec.
WHEAT, ALL (Dollars per bushel)												
1965	1.48	1.44	1.40	1.36	1.33	1.26	1.30	1.35	1.35	1.35	1.38	1.40
1966	1.45	1.48	1.47	1.47	1.51	1.58	1.78	1.76	1.76	1.60	1.65	1.71
1967	1.63	1.50	1.65	1.50	1.50	1.45	1.41	1.37	1.37	1.40	1.35	1.35
1968	1.38	1.39	1.38	1.26	1.26	1.21	1.22	1.22	1.20	1.28	1.32	1.29
1969 1/	1.29	1.29	1.28	1.26	1.26	1.24	1.28	1.26	1.33	1.34	1.34	1.35
BARLEY (Dollars per bushel)												
1965	1.08	1.04	1.04	1.02	1.02	1.02	1.02	1.05	1.05	1.03	1.05	1.07
1966	1.07	1.09	1.09	1.10	1.12	1.02	1.02	1.04	1.02	1.05	1.05	1.07
1967	1.09	1.09	1.07	1.07	1.05	1.04	1.01	1.03	1.03	1.04	1.10	1.05
1968	1.10	1.13	1.15	1.14	1.13	.95	.97	.96	.95	.96	.98	1.00
1969 1/	1.00	1.05	1.05	1.05	1.05	1.00	1.05	1.10	1.08	1.10	1.10	1.11
GRAIN SORGHUM (Dollars per CWT)												
1965	1.99	1.96	1.98	1.98	2.01	2.01	1.98	1.96	1.86	1.80	1.78	1.78
1966	1.80	1.81	1.82	1.80	1.82	1.84	1.90	1.95	1.95	1.80	1.80	1.83
1967	1.89	1.90	1.94	1.98	2.00	2.02	2.01	2.00	1.90	1.85	1.75	1.75
1968	1.76	1.85	1.87	1.87	1.80	1.80	1.78	1.75	1.68	1.75	1.78	1.78
1969 1/	1.80	1.80	1.80	1.80	1.85	1.82	1.90	1.91	2.00	2.09	2.10	2.07
UPLAND COTTON (Cents per pound)												
1965	29.0	31.5	31.0	31.0	31.5	33.0	33.5	---	32.0	32.5	33.0	32.5
1966	29.0	30.0	30.0	29.5	30.0	34.0	33.5	---	---	28.8	29.0	25.9
1967	26.0	24.0	22.0	22.0	22.0	22.0	25.0	---	---	36.0	37.2	34.0
1968	23.5	23.5	25.0	21.0	23.5	24.0	25.0	---	---	29.5	27.5	26.5
1969 1/	26.0	25.5	26.0	26.0	25.0	25.0	25.0	---	---	26.0	25.0	24.5
ALL HAY (Dollars per ton)												
1965	35.30	33.80	30.50	30.40	25.60	22.70	21.00	20.80	20.40	21.30	24.20	25.60
1966	25.60	25.50	26.00	25.50	24.00	21.00	21.00	22.00	22.00	24.00	26.50	29.00
1967	30.50	33.50	35.50	34.50	28.70	28.70	26.00	26.70	26.70	28.00	31.00	34.20
1968	37.40	38.00	36.00	34.00	27.50	25.00	23.50	23.00	23.00	24.50	27.50	31.50
1969 1/	31.00	31.00	31.00	32.00	27.50	24.00	24.50	24.50	23.50	25.50	28.50	30.50
BEEF CATTLE (Dollars per 100 pounds)												
1965	16.60	17.10	18.90	20.00	20.50	21.00	20.40	20.70	20.30	21.00	19.60	19.00
1966	20.70	23.40	25.00	24.70	23.90	23.10	22.00	23.70	23.30	23.70	22.70	21.70
1967	22.50	22.40	22.20	22.30	23.10	22.50	23.60	24.00	23.60	24.10	22.30	21.70
1968	22.40	22.90	24.00	23.90	23.40	24.20	24.70	24.40	24.50	24.90	24.60	24.20
1969 1/	25.10	25.40	26.60	27.80	29.50	31.30	29.40	28.00	27.70	27.50	26.90	27.00
CALVES (Dollars per 100 pounds)												
1965	19.80	19.70	19.80	21.00	21.00	23.20	22.90	23.00	24.00	23.00	23.30	23.80
1966	24.00	27.00	27.80	27.80	26.80	26.00	25.00	26.00	26.70	26.50	26.50	26.50
1967	26.50	26.00	26.00	26.50	28.00	27.00	27.00	27.00	27.70	26.50	26.00	26.20
1968	26.30	27.00	27.00	27.70	28.00	28.50	28.50	28.00	27.50	28.00	28.50	28.80
1969 1/	29.00	29.50	31.00	32.50	35.00	36.00	33.00	31.50	30.50	31.00	31.50	32.00
HOGS (Dollars per 100 pounds)												
1965	15.60	16.30	16.30	16.80	19.30	22.20	23.70	24.20	22.30	22.80	22.90	27.00
1966	27.70	27.30	24.50	22.10	22.30	23.80	23.90	25.00	22.60	21.10	19.30	19.00
1967	19.00	19.50	18.90	17.30	20.90	21.20	21.20	20.80	19.00	18.30	17.30	16.60
1968	17.20	18.20	18.90	18.50	18.20	18.50	20.40	19.10	19.10	17.70	17.20	17.60
1969 1/	18.10	19.00	19.40	19.20	20.70	23.60	24.70	25.70	24.50	24.50	25.00	26.00
LAMBS (Dollars per 100 pounds)												
1965	19.50	20.40	21.50	21.50	21.00	22.50	21.50	22.00	22.00	21.50	22.00	24.00
1966	26.00	26.50	25.80	25.00	24.50	24.30	24.00	24.50	24.50	24.00	23.50	23.50
1967	23.00	20.00	20.00	20.00	23.70	23.50	23.40	23.00	22.00	22.50	22.70	23.00
1968	22.00	22.50	24.50	25.00	25.00	24.50	24.50	23.50	24.00	24.00	24.50	24.50
1969 1/	25.50	27.00	27.50	27.50	27.50	27.00	27.00	27.00	27.50	28.00	28.50	28.50
MILK, WHOLESALE (Dollars per 100 pounds)												
1965	5.40	5.35	5.00	4.85	4.70	4.55	4.70	4.80	5.10	5.25	5.35	5.45
1966	5.55	5.55	5.50	5.45	5.20	5.10	5.60	5.75	6.15	6.30	6.25	6.10
1967	6.20	6.10	5.65	5.45	5.65	5.50	5.45	5.65	5.90	5.90	6.00	6.05
1968	6.05	5.90	5.80	5.65	5.65	5.45	5.60	5.65	5.90	6.00	6.30	6.40
1969 1/	6.35	6.25	6.25	6.10	5.90	5.65	5.90	6.00	6.25	6.45	6.50	6.65

1/ Subject to revision.

CROP VALUES: FARM VALUES OF PRODUCTION OF PRINCIPAL CROPS, BY COUNTIES, 1968

County	Wheat	Sorghum for Grain	Corn for Grain	Barley	Cotton and Cottonseed	All Hay	Alfalfa Seed	Broomcorn
	1,000 Dollars	1,000 Dollars	1,000 Dollars	1,000 Dollars	1,000 Dollars	1,000 Dollars	1,000 Dollars	1,000 Dollars
Bernalillo	17.2	3.0	3.5	2.9	---	711.3	---	---
McKinley	6.5	---	31.8	---	---	63.6	---	---
Rio Arriba	112.4	---	24.3	5.1	---	438.3	---	---
Sandoval	11.7	1.5	44.3	1.2	---	490.2	---	---
San Juan	5.0	3.6	183.1	7.0	---	1337.9	---	---
Santa Fe	48.9	---	38.5	27.2	---	326.0	---	---
Taos	14.7	---	4.2	26.2	---	337.8	---	---
Valencia	56.3	13.3	29.0	26.2	---	1542.3	---	---
NORTHWEST DISTRICT 1/	272.7	21.4	358.7	95.8	---	5247.4	---	---
Colfax	65.3	17.7	35.4	7.1	---	554.4	---	---
Curry	5788.6	5738.0	3.5	186.3	103.3	535.3	---	32.0
De Baca	13.9	49.1	7.3	7.4	34.9	559.7	---	---
Gusdalupe	1.8	2.5	5.4	1.2	---	167.0	---	---
Harding	86.2	26.4	1.4	---	1.0	223.9	---	39.4
Mora	9.6	4.7	4.2	6.1	---	445.2	---	---
Quay	1387.3	628.3	8.8	4.7	249.4	752.4	---	455.7
Roosevelt	1140.7	2305.7	52.0	22.9	1339.7	491.6	---	1120.5
San Miguel	16.5	4.8	10.8	1.2	---	137.8	---	---
Torrance	106.8	23.6	95.8	34.4	---	398.8	---	---
Union	170.1	826.6	235.9	21.8	---	279.8	---	12.4
NORTHEAST DISTRICT 1/	8786.8	9627.4	460.5	293.1	1728.3	4545.9	4.1	1660.0
Catron	---	---	4.0	1.2	---	53.8	---	---
Grant	20.3	29.7	9.3	7.8	3.3	286.2	---	---
Hidalgo	103.5	1081.1	74.3	40.7	659.0	384.7	---	---
Luna	5.3	1514.8	376.7	104.8	2627.2	289.4	---	---
Sierra	---	7.3	9.4	11.6	255.6	268.2	---	---
Socorro	7.2	52.0	24.3	12.6	142.5	1034.4	---	---
SOUTHWEST DISTRICT 1/	136.3	2684.9	498.0	178.7	3687.6	2316.7	9.2	---
Chaves	12.7	525.9	28.3	165.9	4777.2	6802.0	146.1	---
Dona Ana	2.5	168.3	10.1	129.1	9218.3	1874.1	56.4	---
Eddy	7.2	114.5	5.4	47.5	4495.0	5565.0	126.2	---
Lea	6.0	2287.0	6.8	23.3	1995.0	1004.9	---	---
Lincoln	---	---	3.8	---	---	198.2	---	---
Otero	1.8	38.6	5.4	13.6	243.6	243.8	---	---
SOUTHEAST DISTRICT 1/	30.2	3134.3	59.8	379.4	20729.1	15688.0	328.7	---
STATE	9226.0	15468.0	1377.0	947.0	26145.0	27798.0	342.0	1660.0

CROP VALUES: FARM VALUES OF PRODUCTION OF PRINCIPAL CROPS, BY COUNTIES, 1968

County	Potatoes	Sweet-potatoes	Peanuts	Dry Beans	Early Spring and Early Fall Lettuce	Processing Tomatoes	Onions	Apples	Total
	1,000 Dollars	1,000 Dollars	1,000 Dollars	1,000 Dollars	1,000 Dollars	1,000 Dollars	1,000 Dollars	1,000 Dollars	1,000 Dollars
Bernalillo	---	---	---	1.5	29.0	---	40.0	36.6	845.0
McKinley	---	---	---	7.0	---	---	---	---	108.9
Rio Arriba	---	---	---	.6	---	---	---	618.3	1199.0
Sandoval	---	---	---	.3	---	---	---	83.8	633.0
San Juan	28.1	---	---	9.8	---	---	---	387.7	1962.2
Santa Fe	254.5	---	---	.9	---	---	21.6	157.2	874.8
Taos	---	---	---	2.8	---	---	---	---	385.7
Valencia	91.2	---	---	.7	214.0	---	312.8	52.4	2338.2
NORTHWEST DISTRICT 1/	373.8	---	---	23.6	243.0	---	374.4	1336.0	8346.8
Colfax	---	---	---	1.0	---	---	---	---	680.9
Curry	232.3	---	7.4	4.5	---	---	---	---	12631.2
De Baca	---	---	---	.8	---	---	---	---	673.1
Gusdalupe	---	---	---	.8	---	---	---	---	178.7
Harding	---	---	---	1.3	---	---	---	---	379.6
Mora	---	---	---	.7	---	---	---	---	470.5
Quay	---	---	12.4	2.5	---	---	---	---	3501.5
Roosevelt	---	236.0	2429.6	11.3	---	---	127.6	---	9277.6
San Miguel	---	---	---	1.8	---	---	---	---	172.9
Torrance	1208.7	---	---	20.4	541.0	---	---	---	2429.5
Union	---	---	---	---	---	---	---	---	1546.6
Other Counties	43.2	---	---	---	---	---	---	---	43.2
NORTHEAST DISTRICT 1/	1484.2	236.0	2449.4	45.1	541.0	---	127.6	21.0	32010.4
Catron	---	---	---	.2	---	---	---	---	59.2
Grant	---	---	---	---	---	---	---	---	356.6
Hidalgo	---	---	---	17.5	---	---	---	---	2360.8
Luna	---	---	---	36.7	---	---	100.8	---	5055.7
Sierra	---	---	---	---	---	---	92.8	---	644.9
Socorro	---	---	---	3.7	---	---	58.0	---	1334.7
SOUTHWEST DISTRICT 1/	---	---	---	58.1	728.0	---	251.6	63.0	10612.1
Chaves	---	---	---	7.4	---	---	---	---	12465.5
Dona Ana	---	---	---	1.3	7480.0	---	3782.0	---	22722.1
Eddy	---	---	---	---	---	---	104.4	---	10465.2
Lea	---	---	27.6	11.5	---	---	280.0	---	5642.1
Lincoln	---	---	---	---	---	---	---	---	202.0
Otero	---	---	---	---	---	---	---	---	546.8
SOUTHEAST DISTRICT 1/	---	19.0	27.6	20.2	7480.0	428.0	4166.4	802.0	53292.7
STATE	1858.0	255.0	2477.0	147.0	8992.0	428.0	4920.0	2222.0	104262.0

1/ For some crops, County Values will not add to district totals. District totals include counties for which separate estimates were not made.

CROP VALUES: FARM VALUES OF PRODUCTION OF PRINCIPAL CROPS, BY COUNTIES, 1969 1/

County	Wheat	Sorghum for Grain	Corn for Grain	Barley	Cotton and Cottonseed	All Hay	Alfalfa Seed	Broomcorn
	1,000 dollars	1,000 dollars	1,000 dollars	1,000 dollars	1,000 dollars	1,000 dollars	1,000 dollars	1,000 dollars
Bernalillo	4.8	17.6	3.8	3.5	---	788.1	---	---
McKinley	5.9	2.4	37.7	0.1	---	62.8	---	---
Rio Arriba	63.0	---	17.9	6.4	---	414.8	---	---
Sandoval	4.1	---	58.8	---	---	461.4	---	---
San Juan	7.8	14.1	255.7	4.5	---	1452.2	---	---
Santa Fe	35.7	---	104.0	11.0	---	287.3	---	---
Taos	31.7	---	20.7	33.8	---	503.2	---	---
Valencia	9.8	6.2	31.0	7.7	---	2293.6	---	---
NORTHWEST DISTRICT	162.8	40.3	529.6	67.0	---	6263.4	---	---
Colfax	60.1	3.5	21.4	21.7	---	689.0	---	---
Curry	4198.4	7175.5	48.5	58.3	38.2	483.6	---	26.5
De Baca	6.3	59.0	3.0	1.7	4.3	441.0	---	---
Guadalupe	---	3.0	15.4	---	---	112.9	---	---
Harding	57.1	26.0	2.7	0.6	---	133.6	---	49.3
Mora	6.6	---	2.6	2.8	---	411.8	---	---
Quay	1108.9	1003.8	0.6	9.7	160.3	635.0	---	347.8
Roosevelt	676.0	3281.3	43.1	21.3	743.3	432.5	---	842.9
San Miguel	8.5	9.7	15.1	2.7	---	197.4	---	---
Torrance	75.5	10.6	160.7	36.0	---	636.0	---	---
Union	68.0	1539.3	258.8	1.5	---	455.8	---	25.5
NORTHEAST DISTRICT	6265.4	13111.7	571.9	156.3	946.1	4628.6	5.0	1292.0
Catron	1.0	---	1.7	---	---	46.4	---	---
Grant	3.3	152.2	10.8	5.4	10.7	310.1	---	---
Hidalgo	67.6	1150.5	27.1	52.4	694.9	262.4	---	---
Luna	88.4	2633.8	206.1	102.7	2975.9	187.6	---	---
Sierra	---	4.9	7.7	0.5	261.6	165.4	---	---
Socorro	3.2	41.5	34.5	2.1	194.5	1316.5	---	---
SOUTHWEST DISTRICT	163.5	3982.9	287.9	163.1	4137.6	2288.4	---	---
Chaves	5.2	344.6	46.9	207.4	4782.1	6475.3	127.5	---
Dona Ana	6.0	212.2	13.2	141.2	6337.5	2233.4	88.9	---
Eddy	1.0	210.7	4.0	116.5	3779.6	4685.2	106.6	---
Lea	---	1910.3	8.8	7.5	2114.0	1157.3	---	---
Lincoln	---	4.1	6.6	---	---	147.4	---	---
Otero	10.1	73.2	7.1	10.0	174.1	291.0	---	---
SOUTHEAST DISTRICT	22.3	2755.1	86.6	482.6	17187.3	14989.6	323.0	---
STATE	6614.0	19890.0	1476.0	869.0	22271.0	28170.0	328.0	1292.0

CROP VALUES: FARM VALUES OF PRODUCTION OF PRINCIPAL CROPS, BY COUNTIES, 1969 1/

County	Potatoes	Peanuts	Dry Beans	Early Spring and Early Fall Lettuce	Processing Tomatoes	Onions	Apples	Totals
	1,000 dollars	1,000 dollars	1,000 dollars	1,000 dollars	1,000 dollars	1,000 dollars	1,000 dollars	1,000 dollars
Bernalillo	---	---	1.8	48.0	---	25.0	40.5	933.1
McKinley	---	---	30.0	---	---	---	---	138.9
Rio Arriba	---	---	0.1	---	---	---	297.9	800.1
Sandoval	---	---	---	---	---	---	215.7	740.0
San Juan	75.6	---	6.8	---	---	---	431.4	2248.1
Santa Fe	139.1	---	1.6	---	---	20.0	269.6	868.3
Taos	---	---	1.9	---	---	---	---	591.3
Valencia	---	---	1.0	435.0	---	86.0	27.0	2897.3
NORTHWEST DISTRICT 2/	244.2	---	43.2	483.0	---	131.0	1282.1	9246.6
Colfax	---	---	1.5	---	---	---	---	797.2
Curry	218.9	9.0	6.0	---	---	---	---	12262.9
De Baca	---	---	---	---	---	---	40.4	555.7
Guadalupe	---	---	3.2	---	---	---	---	134.5
Harding	---	---	2.8	---	---	---	---	272.1
Mora	---	---	1.0	---	---	---	---	424.8
Quay	---	11.0	---	---	---	---	---	3277.1
Roosevelt	---	2448.0	10.8	---	---	80.0	---	8579.2
San Miguel	---	---	2.0	---	---	---	---	235.4
Torrance	586.1	---	33.0	740.0	---	---	---	2277.9
Union	---	---	3.8	---	---	---	---	2352.7
NORTHEAST DISTRICT 2/	902.8	2468.0	64.1	740.0	---	80.0	40.4	31272.3
Catron	---	---	---	---	---	---	---	49.1
Grant	---	---	---	---	---	---	134.8	627.3
Hidalgo	---	---	32.6	---	---	---	---	2287.5
Luna	---	---	34.9	---	61.0	---	---	6290.4
Sierra	---	---	1.2	---	---	---	10.3	451.6
Socorro	---	---	2.1	---	---	29.4	---	1623.8
						4/69.0		4/69.0
SOUTHWEST DISTRICT 2/	---	---	70.8	3/1268.0	61.0	98.4	145.1	12666.7
Chaves	---	---	12.4	---	---	49.0	---	12050.4
Dona Ana	---	---	3.0	8026.0	265.0	2711.0	---	20037.4
Eddy	---	---	0.9	---	---	51.0	---	8955.5
Lea	---	31.0	---	---	---	171.0	---	5399.9
Lincoln	---	---	0.6	---	---	---	404.5	563.2
Otero	---	---	---	---	---	---	---	565.5
							5/53.9	5/53.9
SOUTHEAST DISTRICT 2/	---	31.0	16.9	8026.0	265.0	2982.0	458.4	47625.8
STATE	1147.0	2499.0	195.0	10517.0	326.0	3291.0	1926.0	6/100811.0

1/ Preliminary. 2/ For some crops, county values will not add to district totals. District totals include counties for which separate estimates were not made. 3/ Luna, Sierra, and Socorro. 4/ Luna and Sierra counties. 5/ Chaves, Dona Ana and Otero counties. 6/ Figures do not add to total due to rounding.

LIVESTOCK INVENTORY VALUES: FARM INVENTORY VALUE OF SPECIFIED SPECIES OF LIVESTOCK BY COUNTIES, JANUARY 1, 1969

County	All cattle 1/	Milk cows 2/	Hogs	All sheep	Chickens	Total
---1,000 dollars---						
Bernalillo	3190.0	774.0	16.2	144.0	138.2	3488.4
McKinley	2610.0	21.5	10.4	2545.0	3.8	5169.2
Rio Arriba	3915.0	86.0	5.8	800.0	6.7	4727.5
Sandoval	2030.0	43.0	4.6	195.0	4.3	2233.9
San Juan	2900.0	258.0	13.9	1580.0	8.6	4502.5
Santa Fe	3190.0	86.0	8.1	16.0	6.9	3221.0
Taos	1595.0	43.0	13.9	421.0	6.7	2036.6
Valencia	6670.0	924.5	19.6	579.0	8.9	7277.5
NORTHWEST DISTRICT	26100.0	2236.0	92.5	6280.0	184.1	32656.6
Colfax	8410.0	64.5	11.6	82.0	5.5	8509.1
Curry	9860.0	129.0	78.5	49.0	13.9	10001.4
De Baca	4495.0	64.5	25.5	462.0	3.8	4986.3
Guadalupe	4350.0	43.0	4.6	903.0	3.8	5261.4
Harding	5075.0	43.0	2.3	18.0	2.4	5097.7
Mora	3335.0	107.5	2.3	246.0	4.8	3588.1
Quay	10440.0	215.0	90.1	70.0	10.6	10610.7
Roosevelt	10585.0	1913.5	168.6	82.0	12.7	10848.3
San Miguel	7250.0	86.0	9.2	72.0	15.6	7346.8
Torrance	3625.0	129.0	20.8	571.0	4.2	4221.0
Union	12325.0	86.0	25.5	31.0	7.2	12388.7
NORTHEAST DISTRICT	79750.0	2881.0	439.0	2586.0	84.5	82859.5
Catron	6380.0	64.5	3.5	---	4.0	6387.5
Grant	7250.0	86.0	10.4	---	3.8	7264.2
Hidalgo	5800.0	64.5	101.6	---	2.3	5903.9
Luna	5220.0	43.0	31.2	---	3.8	5255.0
Sierra	4060.0	580.5	55.4	---	5.0	4120.4
Socorro	7250.0	43.0	5.8	---	3.0	7258.8
SOUTHWEST DISTRICT	35960.0	881.5	207.9	370.0	21.9	36559.8
Chaves	22765.0	516.0	164.0	3058.0	17.8	26004.8
Dona Ana	4060.0	838.5	55.4	52.0	536.6	4704.0
Eddy	8120.0	387.0	34.7	1088.0	50.9	9293.6
Lea	8990.0	451.5	79.7	688.0	22.0	9779.7
Lincoln	4785.0	86.0	8.1	2647.0	2.9	7443.0
Otero	4640.0	107.5	27.7	472.0	3.3	5143.0
SOUTHEAST DISTRICT	53360.0	2386.5	369.6	8005.0	633.5	62368.1
STATE	195170.0	8385.0	1109.0	17241.0	924.0	214444.0

1/ Includes milk cows.

2/ Cows and heifers two years old and over kept for milk.

3/ District total includes counties for which separate estimates were not made.

LIVESTOCK INVENTORY VALUES: FARM INVENTORY VALUE OF SPECIFIED SPECIES OF LIVESTOCK BY COUNTIES, JANUARY 1, 1970^{1/}

County	All cattle 2/	Milk cows 2+	Hogs	All sheep	Chickens	Total
---1,000 dollars---						
Bernalillo	3910.0	936.0	21.0	159.8	259.2	4350.0
McKinley	3230.0	26.0	12.0	2890.5	3.7	6136.2
Rio Arriba	5100.0	104.0	6.0	904.8	5.4	6016.2
Sandoval	2720.0	52.0	6.0	223.2	4.3	2953.5
San Juan	3570.0	312.0	16.5	1788.4	8.2	5383.1
Santa Fe	4250.0	104.0	12.0	18.8	7.1	4287.9
Taos	2040.0	52.0	18.0	477.0	5.9	2540.9
Valencia	7990.0	1118.0	28.5	658.0	7.4	8683.9
NORTHWEST DISTRICT	32810.0	2704.0	120.0	7120.5	301.2	40351.7
Colfax	9520.0	78.0	15.1	94.0	6.8	9635.9
Curry	11220.0	156.0	75.3	56.4	15.2	11366.9
De Baca	5440.0	78.0	24.1	524.0	3.0	5991.1
Guadalupe	5270.0	52.0	6.0	1022.3	3.0	6301.3
Harding	6120.0	52.0	3.0	21.2	2.5	6146.7
Mora	3570.0	130.0	3.0	282.0	4.7	3859.7
Quay	11050.0	260.0	117.4	79.9	11.3	11258.6
Roosevelt	12580.0	2314.0	255.9	94.0	19.8	12949.7
San Miguel	8840.0	104.0	12.0	82.2	16.1	8950.3
Torrance	4250.0	156.0	27.1	646.3	4.2	4927.6
Union	14110.0	104.0	33.1	35.2	8.2	14186.5
NORTHEAST DISTRICT	91970.0	3484.0	572.0	2937.5	94.8	95574.3
Catron	7820.0	78.0	4.5	---	4.4	7828.9
Grant	8500.0	104.0	13.6	---	4.3	8517.9
Hidalgo	6970.0	78.0	150.5	---	2.4	7122.9
Luna	6800.0	52.0	40.7	---	4.2	6844.9
Sierra	4930.0	702.0	54.2	---	5.5	4989.7
Socorro	9350.0	52.0	7.5	---	3.2	9360.7
SOUTHWEST DISTRICT	44370.0	1066.0	271.0	423.0	24.0	45088.0
Chaves	28220.0	624.0	219.8	3492.1	23.5	31955.4
Dona Ana	5100.0	1014.0	78.3	58.7	927.7	6164.7
Eddy	10540.0	468.0	42.2	1236.1	60.1	11878.4
Lea	11560.0	546.0	94.9	782.5	28.9	12466.3
Lincoln	5610.0	104.0	10.6	3010.4	3.6	8634.6
Otero	5440.0	130.0	36.2	538.2	4.2	6018.6
SOUTHEAST DISTRICT	66470.0	2886.0	482.0	9118.0	1048.0	77118.0
STATE	235620.0	10140.0	1445.0	19599.0	1468.0	258132.0

1/ Preliminary.

2/ Includes all milk cows.

3/ District total includes counties for which separate estimates were not made.

