

# NEW MEXICO DEPARTMENT OF AGRICULTURE

New Mexico State University

Las Cruces, New Mexico 88001

DALLAS RIERSON, Director

COOPERATING WITH  
UNITED STATES DEPARTMENT OF AGRICULTURE  
Statistical Reporting Service

COMPILED BY  
NEW MEXICO CROP AND LIVESTOCK  
REPORTING SERVICE

Joe D. Herman - Agricultural Statistician in Charge  
Larry Losleben - Agricultural Statistician  
Dale Hopkins - Agricultural Statistician  
Robert W. Young, - Agricultural Statistician  
David Williams - Agricultural Statistician  
Gustav J. Meier Jr. - Agricultural Statistician  
Hazel M. Hobbs - Supervisory Statistical Assistant  
Statistical Clerical Staff

1480 North Main

P. O. Drawer 580  
Las Cruces, New Mexico 88001

## New Mexico Agricultural Statistics

### TABLE OF CONTENTS

	Pages
FORWARD .....	2
CLIMATE OF NEW MEXICO .....	3
PLANTING AND HARVESTING DATES .....	4
CROP SUMMARY .....	5
PRINCIPAL CROPS .....	6
FARM INCOME TABLES .....	7
LIVESTOCK SUMMARY .....	30
NEW MEXICO OUTSHIPMENTS AND INSHIPMENTS OF CATTLE .....	38-39
PRICES RECEIVED .....	44
GRAPHS .....	43-45

### STATE TABLES

GRAIN AND HAY STOCKS .....	8
LIVESTOCK .....	31

### COUNTY ESTIMATES

COTTON .....	10-13
GRAINS .....	14-21
Barley .....	14-15
Corn .....	16-17
Sorghum .....	18-19
Wheat .....	20-21
MISCELLANEOUS CROPS .....	22-27
Hays .....	22-23
Alfalfa Seed .....	23
Broomcorn .....	24
Potatoes .....	25
Sweetpotatoes .....	25
Peanuts .....	25
Dry Beans .....	26-27
VEGETABLES .....	28-29
Lettuce .....	28
Tomatoes for Processing .....	28
Onions .....	29
FRUITS .....	29
Apples .....	29
LIVESTOCK .....	31-37
Cattle .....	40-41
Milk Cows .....	40-41
Hogs .....	40-41
Sheep .....	40-41
Chickens .....	40-41
Cattle and Sheep on Feed .....	42
VALUE OF CROP PRODUCTION AND LIVESTOCK INVENTORY VALUE	
Individual and Total Value of Principal Crops .....	46-49
Livestock Inventory Values by Species .....	50-51





NEW MEXICO STATE UNIVERSITY

BOX 3189, LAS CRUCES, NEW MEXICO 88001  
NEW MEXICO DEPARTMENT OF AGRICULTURE, AREA 505 646-3007

Office of the Director

FOREWARD

New Mexico agriculture is faced with keeping in step with new requirements and needs of the consumer. In addition, allied industries must keep pace with changes in agriculture to meet its needs in order to adequately provide food and fiber to the people of this country and the world.

To assist all concerned, we take pride in presenting Volume VI, Supplement 2 of New Mexico Agricultural Statistics bringing up to date agricultural production by counties and production values of the major crops of New Mexico.

This work is a cooperative program of the New Mexico Department of Agriculture and the Statistical Reporting Service of the United States Department of Agriculture.

*Dallas Rierson*  
Dallas Rierson  
Director

CLIMATE OF NEW MEXICO

AVERAGE FIRST FALL AND LAST SPRING DATE OF 32°, DAYS BETWEEN DATES, RECORD AVERAGE, PRECIPITATION, 1967-1968

County and Station	Freeze data years of record	Average first date of 32 degrees	Average last spring date of 32 degrees	Average number of days between dates	Precipitation (in inches)		
					Average 1931-1960 or * for period of record through 1968	1967	1968
Bernalillo Albuquerque	77	Oct. 27	Apr. 17	193	8.13	8.04	10.67
Sandoval Jemez Springs	57	Oct. 21	May 1	173	17.68	15.72	14.99
San Juan Shiprock	38	Oct. 13	May 1	165	* 6.72	5.26	4.68
Aztec Ruins Nat'l. Monument	56	Oct. 10	May 12	151	9.82	6.55	9.07
Santa Fe Santa Fe	92	Oct. 15	May 6	162	13.76	15.05	15.19
Taos Taos	67	Oct. 3	May 16	140	12.08	13.44	13.82
Valencia Los Lunas	68	Oct. 18	Apr. 23	178	* 7.90	8.93	8.43
San Fidel	42	Oct. 13	May 8	158	* 9.56	10.16	7.83
Colfax Raton	15	Oct. 9	May 10	152	*16.34	16.95	12.64
Springer	72	Oct. 6	May 8	151	15.59	19.53	10.65
Curry Clovis	55	Oct. 28	Apr. 15	196	17.48	15.33	12.72
Melrose	26	Oct. 24	Apr. 19	188	15.13	13.94	13.31
De Baca Ft. Sumner	56	Oct. 23	Apr. 18	188	13.74	12.06	12.64
Alamogordo Dam	30	Oct. 29	Apr. 16	196	*12.36	9.67	14.73
Guadalupe Santa Rosa	58	Oct. 25	Apr. 17	191	13.92	9.69	14.55
Quay Tucumcari	63	Oct. 27	Apr. 15	195	15.07	12.99	10.44
San Jon	61	Oct. 25	Apr. 23	185	15.18	15.07	12.65
Roosevelt Portales	56	Oct. 19	Apr. 23	180	16.94	13.53	10.56
Elida	28	Oct. 27	Apr. 17	193	15.09	12.25	11.37
San Miguel Las Vegas Airport	28	Oct. 9	May 12	150	*15.07	15.24	13.63
Bell Ranch	64	Oct. 22	Apr. 21	184	14.52	13.50	8.84
Torrance Estancia	48	Oct. 1	May 20	134	*11.82	14.03	9.05
Union Clayton	62	Oct. 20	Apr. 27	176	14.51	13.84	10.69
Des Moines	52	Oct. 4	May 14	143	17.91	21.85	14.14
Catron Quemado	38	Sept. 24	June 8	108	10.40	12.38	10.34
Grant Ft. Bayard	70	Oct. 24	Apr. 28	179	14.41	15.09	16.35
Hachita	50	Nov. 4	Apr. 13	205	9.54	8.14	11.23
Hidalgo Lordsburg	41	Nov. 5	Apr. 5	214	10.10	8.91	12.20
Animas	40	Oct. 28	Apr. 24	187	9.99	14.67	9.98
Luna Deming	72	Nov. 1	Apr. 5	210	8.84	8.86	9.30
Sierra Caballo Dam	32	Nov. 4	Apr. 7	211	* 8.40	10.24	7.49
Winston	22	Oct. 8	May 14	147	12.14	16.24	8.17
Hillsboro	26	Oct. 28	Apr. 17	194	10.98	16.62	10.31
Socorro Socorro	72	Oct. 24	Apr. 11	196	8.75	7.98	11.48
Augustine	37	Sept. 26	May 30	122	10.51	9.51	13.37
Chaves Roswell	75	Oct. 30	Apr. 8	205	11.62	11.06	15.84
Elk	57	Oct. 16	Apr. 30	169	15.84	11.45	20.80
Dona Ana State University	77	Oct. 28	Apr. 9	202	8.01	8.42	13.17
Hatch	55	Oct. 24	Apr. 11	196	8.94	11.76	8.31
Eddy Carlsbad	72	Nov. 5	Apr. 4	217	12.45	6.97	15.30
Artesia	60	Oct. 28	Apr. 12	199	11.33	5.41	13.80
Lea Hobbs	49	Nov. 5	Apr. 8	211	*14.87	7.45	19.79
Jal	27	Nov. 2	Apr. 2	214	*11.31	8.51	15.94
Lincoln Ft. Stanton	70	Oct. 7	May 7	153	*15.24	11.28	12.54
Corona	55	Oct. 14	May 6	161	15.87	13.85	12.36
Otero Alamogordo	50	Nov. 5	Apr. 6	213	9.80	10.85	11.95
Cloudcroft	66	Sept. 29	May 19	133	25.74	26.03	27.09

Source: Environmental Science Services Administration, Weather Bureau State Climatologist, Las Cruces, N.M.



## USUAL PLANTING AND HARVESTING DATES

Crop	1968 harvested acreage (1,000 acres)	Usual planting dates	Usual harvesting dates			Principal Counties
			Begins	Most Active	Ends	
BARLEY						
Fall sown	16	Sept. 1-Nov. 1	June 10	June 15-July 10	July 20	Chaves-Dona Ana-Eddy
Spring sown		Feb. 15-Apr. 1	June 20	June 25-July 15	Aug. 1	
BEANS, dry	4	May 15-June 15	Sept. 1	Sept. 10-Oct. 1	Oct. 15	McKinley-Torrance-Luna
BROOMCORN	26	May 20-July 1	Aug. 20	Sept. 10-Oct. 10	Nov. 1	Quay-Roosevelt
CORN, all	49	Apr. 15-June 1	Sept. 15	Oct. 10-Nov. 1	Dec. 1	San Juan- Santa Fe-Torrance
COTTON	152	Apr. 1-May 15	Sept. 25	Oct. 15-Nov. 20	Jan. 1	Chaves-Dona Ana-Eddy
HAY, alfalfa	203		May 1		Oct. 20	Chaves-Dona Ana-Eddy
PEANUTS for nuts	7.9	May 10-June 1	Oct. 1	Oct. 10-Oct. 25	Nov. 10	Roosevelt
SORGHUM						
Grain	279	May 10-July 10	Oct. 1	Oct. 10-Nov. 10	Dec. 1	Curry-Roosevelt-Lea
Silage	8	May 10-June 20	Aug. 15	Sept. 5-Oct. 1	Oct. 20	
SUGAR BEETS	4.4	Feb. 1-Mar. 15	Nov. 1	Nov. 10-Dec. 1	Dec. 15	Curry-Hidalgo
WHEAT, winter	305	Sept. 1-Oct. 20	June 5	June 15-July 5	July 20	Curry-Quay-Roosevelt
<u>SEED CROPS:</u>						
ALFALFA	3.0		July 25	Aug. 15-Sept. 15	Oct. 1	Chaves-Dona Ana-Eddy
<u>VEGETABLES:</u>						
LETTUCE						
Early spring	5.2	Jan. 1-Jan. 15	Apr. 25	May 1-May 31	June 5	Dona Ana
Early fall	6.4	Aug. 1-Aug. 15	Oct. 5	Oct. 10-Oct. 31	Nov. 10	Dona Ana
ONIONS						
Grano	4.1	Oct. 1-Oct. 15	May 25	June 1-Aug. 31	Oct. 15	Lea-Dona Ana-Luna-Hidalgo
Sweet Spanish		Feb. 1-Feb. 15				
TOMATOES, all	.9	Apr. 15-May 20	Sept. 1	Sept. 1-Oct. 31	Nov. 1	Luna-Otero-Dona Ana
POTATOES	4.3	May 1-June 15	July 25	Aug. 15-Oct. 31	Nov. 15	Santa Fe-Torrance
APPLES						
North	...		Aug. 15	Sept. 5-Oct. 20	Oct. 30	San Juan-Rio Arriba-Bernalillo-Sandoval-Santa Fe
South	...		Aug. 15	Aug. 30-Oct. 15	Oct. 30	Lincoln-Otero-De Baca

## Annual Crop Summary

Cash receipts from crop marketings in New Mexico totaled \$99,355,000, up 3 percent from last year's receipts of \$96,378,000. The cash receipts from crop marketings represented 29 percent of all agricultural products marketed in New Mexico during 1968. Realized net income per farm increased by 10 percent and is currently estimated at \$9,032. This figure excludes changes in inventories and represents average income of the farm and ranch operators. The increase in cash receipts from crops was mainly due to increased production of such crops as cotton, hay, wheat, corn, barley, fruit and vegetables.

The 1968 Wheat Production of 7,625,000 bushels was almost double the crop of 1967. Acreage for harvest more than doubled the relatively small acreage harvested in 1967 and is estimated at 305,000 acres. Weather and moisture conditions throughout 1968 were very favorable for wheat and very little dryland wheat was abandoned. Yield per acre at 25.0 bushels was down by 3.0 bushels from the previous year due to the proportionally larger dryland acreage harvested which reduced overall yields.

Total feed grain production of corn, barley and sorghum grain is estimated at 489,456 tons. This is 15 percent less than last year's production of 578,296 tons. The drop in feed grain production resulted from declines in both harvested acreage and yield for grain sorghum more than offsetting gains reported for corn and barley.

Sorghum grain production totaled 15,624,000 bushels down 3.5 million bushels from 1967. Acreage harvested decreased 35,000 acres from last year to 279,000 acres but was still above average. Yield per acre at 56.0 bushels was down by 5.0 bushels in 1968, partially due to more dryland acreage harvested in 1968. Production of corn for grain increased to 1,020,000 bushels from the 800,000 bushels produced in 1967. Acreage for harvest was up 1,000 acres from last year and is estimated at 17,000 acres. Yield per acre at 60.0 bushels was a new record high for New Mexico. Barley production, estimated at 976,000 bushels, was up 20 percent from the 1967 crop. The increased production was the result of favorable growing conditions. Yield per acre at 61.0 bushels for barley was also a new record. Acreage for harvest at 16,000 acres was unchanged from 1967.

Cotton production for 1968 is estimated at 177,000 bales up 20,000 bales from the 1967 crop. Acreage harvested, estimated at 152,000 acres, was 30,000 acres above that harvested in 1967 which accounts for the increased production. Yield per acre continued the downward trend to 557 pounds per acre and compares with 619 pounds in 1967 and 648 pounds in 1966. Unfavorable weather and insect infestation plagued the crop early in the season and partly accounted for the low yield.

Production of all hay is estimated at 1,049,000 tons, up 9 percent from that produced last year. Alfalfa hay represents 91 percent of all hay harvested and accounts for most of the increased production.

Broomcorn production increased from 3,100 tons in 1967 to 4,000 tons in 1968, due primarily to higher yields. Production of peanuts increased slightly in 1968 and is estimated at 17,696,000 pounds compared to 15,920,000 pounds produced the previous year. Irish potato production increased by 25 percent from the 620,000 cwt. produced in 1967 due to an increase in harvested acres. Sweetpotato production totaled 42,000 cwt. compared to 36,000 cwt. in 1967. Apple production increased sharply from the near failure crop of 1967 and is estimated at 1,010,000 bushels (42.4 Mil. Pounds). A record crop of pecans totaling 10 million pounds is estimated for 1968. This compares with the near failure crop in 1967 of 2.9 million pounds.



## New Mexico Agricultural Statistics

## GRAIN STOCKS: QUANTITIES STORED ON AND OFF FARMS, 1967, 1968 AND 1969

Year	On farms				Off farms			
	Jan. 1	Apr. 1	July 1	Oct. 1	Jan. 1	Apr. 1	July 1	Oct. 1
	1,000 bushels	1,000 bushels	1,000 bushels	1,000 bushels	1,000 bushels	1,000 bushels	1,000 bushels	1,000 bushels
<b>Wheat</b>								
1967	141	94	47	434	1361	865	487	1547
1968	197	158	79	1068	1772	990	988	3038
1969 <u>1/</u>	NA	534	...	...	NA	3100	...	...
<b>Corn</b>								
1967	437	207	109	55	41	30	29	3
1968	696	344	200	96	NA	NA	NA	NA
1969 <u>1/</u>	NA	500	...	..	NA	NA	..	..
<b>Barley</b>								
1967	92	50	29	220	42	44	46	102
1968	155	106	49	205	NA	NA	NA	91
1969 <u>1/</u>	NA	107	..	...	NA	85	..	...
<b>Grain Sorghum</b>								
1967	2550	1275	638	398	6649	4755	2839	1709
1968	3639	1915	1149	766	8835	5957	3667	2814
1969 <u>1/</u>	NA	1172	...	...	NA	5361	...	...

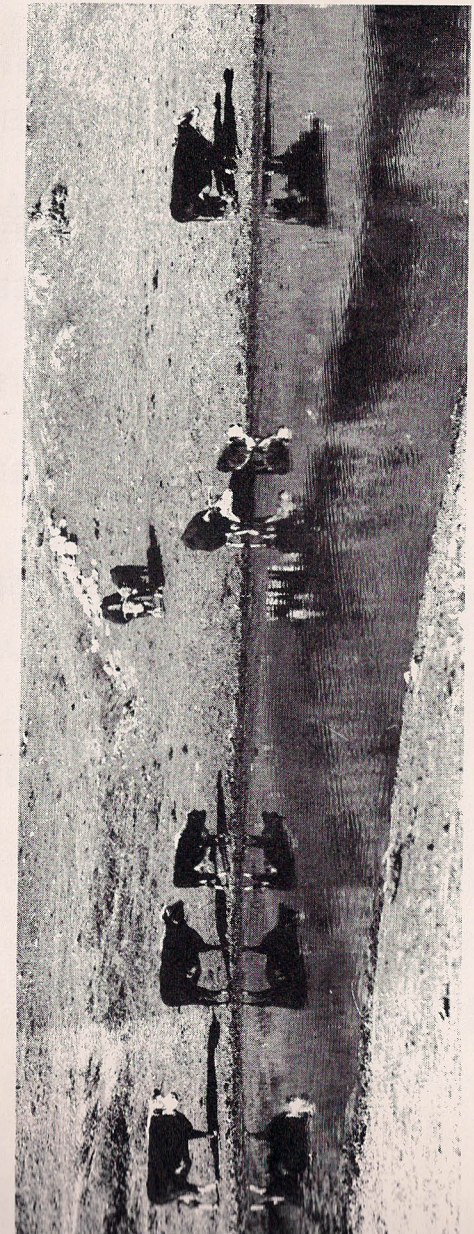
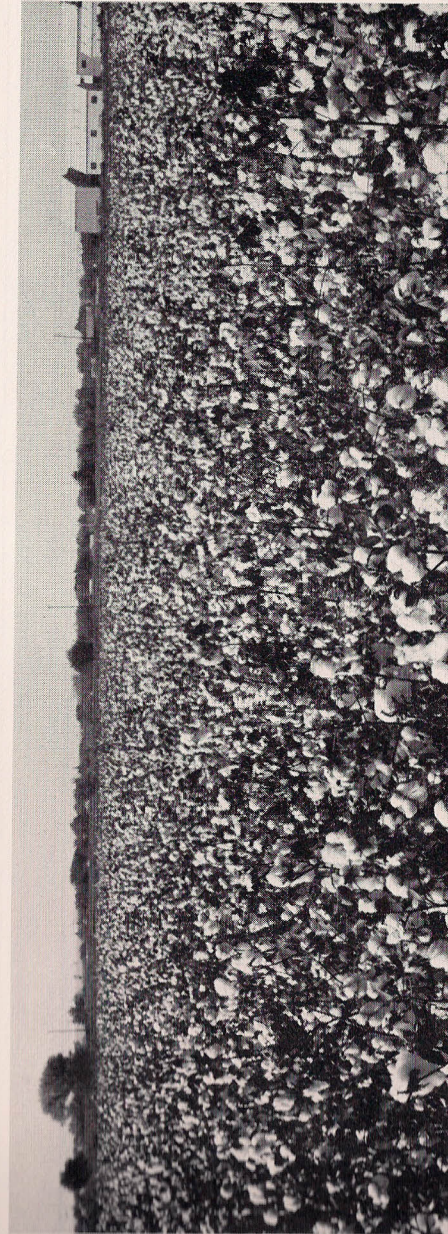
1/ Preliminary. NA Not available.

## HAY STOCKS: QUANTITIES STORED ON FARMS, 1967, 1968 AND 1969

1967		1968		1969 <u>1/</u>	
Jan. 1	May 1	Jan. 1	May 1	Jan. 1	May 1
1,000 tons	1,000 tons	1,000 tons	1,000 tons	1,000 tons	1,000 tons
504	112	347	106	524	...

1/ Preliminary

## New Mexico Agricultural Statistics





ALL COTTON: ACREAGE, YIELD, AND PRODUCTION, BY COUNTIES, IRRIGATED AND NON-IRRIGATED, 1967

County	Acres Planted			Acres Harvested			Yield per Harvested Acre			Production (500 lb. gross weight bales)		
	Irrig.	Non-irrig.	Total	Irrig.	Non-irrig.	Total	Irrig.	Non-irrig.	Total	Irrig.	Non-irrig.	Total
	Acres	Acres	Acres	Acres	Acres	Acres	Pounds	Pounds	Pounds	Bales	Bales	Bales
Curry	780	100	880	400	70	470	465	143	417	386	21	407
De Baca	340	0	340	160	0	160	694	---	694	225	---	225
Harding	10	0	10	0	0	0	---	---	---	---	---	---
Quay	1760	0	1760	1360	0	1360	416	---	416	1181	---	1181
Roosevelt	8620	1500	10120	7050	500	7550	478	144	455	7022	150	7172
NORTHWEST DISTRICT	11510	1600	13110	8970	570	9540	472	144	452	8814	171	8985
Grant	70	0	70	70	0	70	757	---	757	111	---	111
Hidalgo	4120	0	4120	3995	0	3995	667	---	667	5541	---	5541
Luna	9790	0	9790	9735	0	9735	800	---	800	16185	---	16185
Sierra	1950	0	1950	1895	0	1895	559	---	559	2203	---	2203
Socorro	1300	0	1300	1250	0	1250	560	---	560	1455	---	1455
SOUTHWEST DISTRICT	17230	0	17230	16945	0	16945	724	---	724	25495	---	25495
Chaves	22150	0	22150	18575	0	18575	641	---	641	24752	---	24752
Dona Ana	42630	0	42630	41205	0	41205	607	---	607	52073	---	52073
Eddy	19520	0	19520	18910	0	18910	721	000	721	28342	---	28342
Lea	15630	300	15930	15190	260	15450	488	162	483	15404	88	15492
Otero	1430	0	1430	1375	0	1375	652	---	652	1861	---	1861
SOUTHEAST DISTRICT	101360	300	101660	95255	260	95515	618	162	617	122432	88	122520
STATE	130100	1900	132000	121170	830	122000	622	149	619	156741	259	157000

COTTONSEED: PRODUCTION, FARM DISPOSITION, PRICE, AND VALUE, 1966, 1967 AND 1968

Year	Production 1,000 tons	Farm Disposition		Season Average Price Per Ton	Value of Production 1,000 dollars
		Sold 1,000 tons	Used on Farms 1,000 tons		
1966	75	72	3	70.50	5288
1967	68	65	3	59.60	4053
1968	74	71	3	52.90	3915

ALL COTTON: ACREAGE, YIELD, AND PRODUCTION, BY COUNTIES, IRRIGATED AND NON-IRRIGATED 1968

County	Acres Planted			Acres Harvested			Yield per Harvested Acre			Production (500 lb. gross weight bales)		
	Irrig.	Non-irrig.	Total	Irrig.	Non-irrig.	Total	Irrig.	Non-irrig.	Total	Irrig.	Non-irrig.	Total
	Acres	Acres	Acres	Acres	Acres	Acres	Pounds	Pounds	Pounds	Bales	Bales	Bales
Curry	1070	40	1110	960	40	1000	351	250	347	705	20	725
De Baca	360	0	360	290	0	290	400	---	400	245	---	245
Harding	10	0	10	10	0	10	300	---	300	7	---	7
Quay	1840	0	1840	1600	0	1600	522	---	522	1750	---	1750
Roosevelt	10500	2100	12600	8600	1500	10100	475	270	445	8555	845	9400
NORTHEAST DISTRICT	13780	2140	15920	11460	1540	13000	469	269	446	11262	865	12127
Grant	50	0	50	40	0	40	250	---	250	23	---	23
Hidalgo	5100	0	5100	4850	0	4850	454	---	454	4620	---	4620
Luna	14100	0	14100	13620	0	13620	646	---	646	18400	---	18400
Sierra	2370	0	2370	2270	0	2270	363	---	363	1730	---	1730
Socorro	1640	0	1640	1550	0	1550	305	---	305	1000	---	1000
SOUTHWEST DISTRICT	23260	0	23260	22330	0	22330	551	---	551	25773	---	25773
Chaves	27900	0	27900	26700	0	26700	601	---	601	33500	---	33500
Dona Ana	48500	0	48500	46990	0	46990	596	---	596	58400	---	58400
Eddy	23900	0	23900	23200	0	23200	650	---	650	31500	---	31500
Lea	20300	300	20600	17840	260	18100	374	200	371	13890	110	14000
Otero	1920	0	1920	1680	0	1680	480	---	480	1700	---	1700
SOUTHEAST DISTRICT	122520	300	122820	116410	260	116670	572	200	571	138990	110	139100
STATE	159560	2440	162000	150200	1800	152000	561	259	557	176025	975	177000

AMERICAN EGYPTIAN COTTON: ACREAGE, YIELD, AND PRODUCTION, BY COUNTIES, ALL IRRIGATED, 1967 AND 1968

County	1967				1968			
	Acres		Yield per harvested acres	Production (500 pound gross weight bales)	Acres		Yield per harvested acre	Production (500 pound gross weight bales)
	Planted	Harvested	Pounds	Bales	Planted	Harvested	Pounds	Bales
Hidalgo	20	15	200	6	20	15	265	8
Luna	110	105	267	58	110	80	422	65
Sierra	180	165	448	152	180	160	351	115
SOUTHWEST DISTRICT	310	285	368	216	310	255	368	188
Chaves	40	35	280	14	40	30	480	30
Dona Ana	13500	12845	360	9690	13500	12900	412	11100
Eddy	120	110	300	70	120	90	353	65
Otero	30	25	200	10	30	25	357	17
SOUTHEAST DISTRICT	13690	13015	359	9784	13690	13045	412	11212
STATE	14000	13300	359	10000	14000	13300	411	11400



UPLAND COTTON: ACREAGE, YIELD, AND PRODUCTION, BY COUNTIES, IRRIGATED AND NON-IRRIGATED, 1967

County	Acres Planted			Acres Harvested			Yield per Harvested Acre			Production (500 lb. gross weight bales)		
	Irrig.	Non- irrig.	Total	Irrig.	Non- irrig.	Total	Irrig.	Non- irrig.	Total	Irrig.	Non-irrig.	Total
	Acres	Acres	Acres	Acres	Acres	Acres	Pounds	Pounds	Pounds	Bales	Bales	Bales
Curry	780	100	880	400	70	470	465	143	417	386	21	407
De Baca	340	0	340	160	0	160	694	---	694	225	---	225
Harding	10	0	10	0	0	0	---	---	---	---	---	---
Quay	1760	0	1760	1360	0	1360	416	---	416	1181	---	1181
Roosevelt	8620	1500	10120	7050	500	7550	478	144	455	7022	150	7172
NORTHEAST DISTRICT	11510	1600	13110	8970	570	9540	472	144	452	8814	171	8985
Grant	70	0	70	70	0	70	757	---	757	111	---	111
Hidalgo	4100	0	4100	3980	0	3980	669	---	669	5535	---	5535
Luna	9680	0	9680	9630	0	9630	806	---	806	16127	---	16127
Sierra	1770	0	1770	1730	0	1730	570	---	570	2051	---	2051
Socorro	1300	0	1300	1250	0	1250	560	---	560	1455	---	1455
SOUTHWEST DISTRICT	16920	0	16920	16660	0	16660	730	---	730	25279	---	25279
Chaves	22110	0	22110	18550	0	18550	642	---	642	24738	---	24738
Dona Ana	29130	0	29130	28350	0	28350	720	---	720	42383	---	42383
Eddy	19400	0	19400	18800	0	18800	724	---	724	28272	---	28272
Lea	15630	300	15930	15190	260	15450	488	162	483	15404	88	15492
Otero	1400	0	1400	1350	0	1350	660	---	660	1851	---	1851
SOUTHEAST DISTRICT	87670	300	87970	82240	260	82500	659	162	658	112648	88	112736
STATE	116100	1900	118000	107870	830	108700	655	149	651	146741	259	147000

UPLAND COTTON: ACREAGE, YIELD, AND PRODUCTION, BY COUNTIES, IRRIGATED AND NON-IRRIGATED 1968

County	Acres Planted			Acres Harvested			Yield per Harvested Acre			Production (500 lb. gross weight bales)		
	Irrig.	Non- irrig.	Total	Irrig.	Non- irrig.	Total	Irrig.	Non- irrig.	Total	Irrig.	Non-irrig.	Total
	Acres	Acres	Acres	Acres	Acres	Acres	Pounds	Pounds	Pounds	Bales	Bales	Bales
Curry	1070	40	1110	960	40	1000	351	250	347	705	20	725
De Baca	360	0	360	290	0	290	400	---	400	245	---	245
Harding	10	0	10	10	0	10	300	---	300	7	---	7
Quay	1840	0	1840	1600	0	1600	522	---	522	1750	---	1750
Roosevelt	10500	2100	12600	8600	1500	10100	475	270	445	8555	845	9400
NORTHEAST DISTRICT	13780	2140	15920	11460	1540	13000	469	269	446	11262	865	12127
Grant	50	0	50	40	0	40	250	---	250	23	---	23
Hidalgo	5080	0	5080	4835	0	4835	455	---	455	4612	---	4612
Luna	13990	0	13990	13520	0	13520	648	---	648	18335	---	18335
Sierra	2190	0	2190	2120	0	2120	362	---	362	1615	---	1615
Socorro	1640	0	1640	1550	0	1550	305	---	305	1000	---	1000
SOUTHWEST DISTRICT	22950	0	22950	22065	0	22065	553	---	553	25585	---	25585
Chaves	27860	0	27860	26670	0	26670	601	---	601	33470	---	33470
Dona Ana	35000	0	35000	34100	0	34100	665	---	665	47300	---	47300
Eddy	23780	0	23780	23110	0	23110	651	---	651	31435	---	31435
Lea	20300	300	20600	17840	260	18100	374	200	371	13890	110	14000
Otero	1890	0	1890	1655	0	1655	482	---	482	1683	---	1683
SOUTHEAST DISTRICT	108830	300	109130	103375	260	103635	592	200	591	127778	110	127888
STATE	145560	2440	148000	136900	1800	138700	576	259	572	164625	975	165600



ALL SORGHUMS: ACREAGE, YIELD AND PRODUCTION BY COUNTIES, IRRIGATED AND NON-IRRIGATED, 1967

	Acres planted all purposes			Acres			Harvested for grain Yield per acre			Production		
	Irrig.	Non-Irrig.	Total	Irrig.	Non-Irrig.	Total	Irrig.	Non-Irrig.	Total	Irrig.	Non-Irrig.	Total
	Acres	Acres	Acres	Acres	Acres	Acres	Bushels	Bushels	Bushels	Bushels	Bushels	Bushels
Bernalillo	300	0	300	20	0	20	35.0	....	35.0	700	....	700
McKinley	150	0	150	0	0	0	....	....	....	....	....	....
Rio Arriba	100	60	160	0	0	0	....	....	....	....	....	....
Sandoval	100	40	140	10	0	10	25.0	....	25.0	250	....	250
San Juan	400	100	500	100	0	100	36.0	....	36.0	3600	....	3600
Santa Fe	50	0	50	20	0	20	67.0	....	67.0	1340	....	1340
Taos	100	0	100	20	0	20	35.0	....	35.0	700	....	700
Valencia	800	0	800	400	0	400	57.0	....	57.0	22800	....	22800
NORTHWEST DISTRICT	2000	200	2200	570	0	570	51.6	....	51.6	29390	....	29390
Colfax	500	1600	2100	500	0	500	44.0	....	44.0	22000	....	22000
Curry	70000	75000	145000	68000	47000	115000	110.0	22.0	74.0	7480000	1034000	8514000
De Baca	1300	0	1300	750	0	750	110.0	....	110.0	82500	....	82500
Guadalupe	100	100	200	10	10	20	50.0	20.0	35.0	500	200	700
Harding	550	650	1200	260	340	600	45.0	25.0	33.7	11700	8500	20200
Mora	150	250	400	100	50	150	40.0	16.0	32.0	4000	800	4800
Quay	11000	29000	40000	9000	10500	19500	55.0	18.0	35.1	495000	189000	684000
Roosevelt	25000	61000	86000	22000	51000	73000	77.0	28.0	42.8	1694000	1428000	3122000
San Miguel	150	250	400	100	0	100	42.0	....	42.0	4200	....	4200
Torrance	1000	400	1400	680	0	680	35.0	....	35.0	23800	....	23800
Union	4200	28800	33000	3700	20300	24000	70.0	15.0	23.5	259000	304500	563500
NORTHEAST DISTRICT	113950	197050	311000	105100	129200	234300	95.9	22.9	55.7	10076700	2965000	13041700
Catron	50	50	100	0	0	0	....	....	....	....	....	....
Grant	1400	0	1400	500	0	500	61.0	....	61.0	30500	....	30500
Hidalgo	14000	0	14000	13000	0	13000	96.0	....	96.0	1248000	....	1248000
Luna	19000	0	19000	16000	0	16000	95.0	....	95.0	1520000	....	1520000
Sierra	300	0	300	150	0	150	75.0	....	75.0	11250	....	11250
Socorro	800	0	800	600	0	600	85.0	....	85.0	51000	....	51000
SOUTHWEST DISTRICT	35550	50	35600	30250	0	30250	94.6	....	94.6	2860750	....	2860750
Chaves	17000	0	17000	8000	0	8000	77.0	....	77.0	616000	....	616000
Dona Ana	3400	100	3500	2400	0	2400	70.0	....	70.0	168000	....	168000
Eddy	3200	0	3200	1000	0	1000	82.0	....	82.0	82000	....	82000
Lea	41000	9000	50000	33000	4000	37000	68.0	20.0	62.8	2244000	80000	2324000
Lincoln	50	0	50	0	0	0	....	....	....	....	....	....
Otero	1450	0	1450	480	0	480	67.0	....	67.0	32160	....	32160
SOUTHEAST DISTRICT	66100	9100	75200	44880	4000	48880	70.0	20.0	65.9	3142160	80000	3222160
STATE	217600	206400	424000	180800	133200	314000	89.1	22.9	61.0	16109000	3045000	19154000

ALL SORGHUMS: ACREAGE, YIELD AND PRODUCTION BY COUNTIES, IRRIGATED AND NON-IRRIGATED, 1968 1/

	Acres planted all purposes			Acres			Harvested for grain Yield per acre			Production		
	Irrig.	Non-Irrig.	Total	Irrig.	Non-Irrig.	Total	Irrig.	Non-Irrig.	Total	Irrig.	Non-Irrig.	Total
	Acres	Acres	Acres	Acres	Acres	Acres	Bushels	Bushels	Bushels	Bushels	Bushels	Bushels
Bernalillo	300	0	300	100	0	100	30.0	....	30.0	3000	....	3000
McKinley	150	0	150	0	0	0	....	....	....	....	....	....
Rio Arriba	100	850	950	0	0	0	....	....	....	....	....	....
Sandoval	140	0	140	60	0	60	25.0	....	25.0	1500	....	1500
San Juan	350	50	400	90	0	90	40.0	....	40.0	3600	....	3600
Santa Fe	150	0	150	0	0	0	....	....	....	....	....	....
Taos	50	0	50	0	0	0	....	....	....	....	....	....
Valencia	660	0	660	250	0	250	54.0	....	54.0	13500	....	13500
NORTHWEST DISTRICT	1900	900	2800	500	0	500	43.2	....	43.2	21600	....	21600
Colfax	450	1450	1900	400	100	500	41.0	15.0	35.8	16400	1500	17900
Curry	57000	60000	117000	56000	28000	84000	95.0	17.0	69.0	5320000	476000	5796000
De Baca	1100	0	1100	800	0	800	62.0	....	62.0	49600	....	49600
Guadalupe	100	100	200	30	70	100	50.0	14.0	24.8	1500	980	2480
Harding	550	1050	1600	300	800	1100	38.5	18.9	24.2	11550	15100	26650
Mora	150	350	500	100	50	150	40.0	14.0	31.3	4000	700	4700
Quay	11000	28000	39000	8600	12400	21000	50.0	16.5	30.2	430000	204600	634600
Roosevelt	27000	51500	78500	23000	44000	67000	63.0	20.0	34.8	1449000	880000	2329000
San Miguel	150	450	600	100	50	150	41.0	14.0	32.0	4100	700	4800
Torrance	800	800	1600	670	30	700	35.0	14.0	34.1	23450	420	23870
Union	17600	19400	37000	13000	8000	21000	55.0	15.0	39.8	715000	120000	835000
NORTHEAST DISTRICT	115900	163100	279000	103000	93500	196500	77.9	18.2	49.5	8024600	1700000	9724600
Catron	50	0	50	0	0	0	....	....	....	....	....	....
Grant	1350	0	1350	500	0	500	60.0	....	60.0	30000	....	30000
Hidalgo	14000	0	14000	13000	0	13000	84.0	....	84.0	1092000	....	1092000
Luna	19000	0	19000	17000	0	17000	90.0	....	90.0	1530000	....	1530000
Sierra	200	0	200	100	0	100	74.0	....	74.0	7400	....	7400
Socorro	900	0	900	700	0	700	75.0	....	75.0	52500	....	52500
SOUTHWEST DISTRICT	35500	0	35500	31300	0	31300	86.6	....	86.6	2711900	....	2711900
Chaves	15000	0	15000	8300	0	8300	64.0	....	64.0	531200	....	531200
Dona Ana	3300	0	3300	2500	0	2500	68.0	....	68.0	170000	....	170000
Eddy	3000	0	3000	1300	0	1300	89.0	....	89.0	115700	....	115700
Lea	42000	8000	50000	34000	4000	38000	65.0	25.0	60.8	2210000	100000	2310000
Lincoln	50	0	50	0	0	0	....	....	....	....	....	....
Otero	1350	0	1350	600	0	600	65.0	....	65.0	39000	....	39000
SOUTHEAST DISTRICT	64700	8000	72700	46700	4000	50700	65.6	25.0	62.4	3065900	100000	3165900
STATE	218000	172000	390000	181500	97500	279000	76.2	18.5	56.0	13824000	1800000	15624000

1/ Preliminary



WINTER WHEAT: ACREAGE, YIELD, AND PRODUCTION BY COUNTIES, IRRIGATED AND NON-IRRIGATED, 1967

County	Acres planted			Acres harvested			Yield per harvested acre			Production		
	Irrig.	Non-Irrig.	Total	Irrig.	Non-Irrig.	Total	Irrig.	Non-Irrig.	Total	Irrig.	Non-Irrig.	Total
	Acres	Acres	Acres	Acres	Acres	Acres	Bushels	Bushels	Bushels	Bushels	Bushels	Bushels
Bernalillo	1000	200	1200	250	0	250	30.0	....	30.0	7500	....	7500
McKinley	200	300	500	100	250	350	15.0	10.0	11.4	1500	2500	4000
Rio Arriba	200	4900	5100	200	3300	3500	21.0	15.0	15.3	4200	49500	53700
Sandoval	300	200	500	50	100	150	30.0	7.0	14.7	1500	700	2200
San Juan	100	50	150	50	0	50	30.0	....	30.0	1500	....	1500
Santa Fe	700	900	1600	500	200	700	40.0	12.0	32.0	20000	2400	22400
Taos	450	100	550	250	50	300	22.0	10.0	20.0	5500	500	6000
Valencia	1500	1000	2500	1100	100	1200	40.0	13.0	37.8	44000	1300	45300
NORTHWEST DISTRICT	4450	7650	12100	2500	4000	6500	27.1	14.2	21.9	85700	56900	142600
Colfax	2000	3000	5000	1300	700	2000	34.0	12.0	26.3	44200	8400	52600
Curry	80000	105000	185000	71000	17000	88000	39.9	10.0	34.1	2832900	170000	3002900
De Baca	400	0	400	250	0	250	37.0	....	37.0	9250	....	9250
Guadalupe	100	0	100	0	0	0	....	....	....	....	....	....
Harding	500	10500	11000	400	550	950	25.0	8.0	15.2	10000	4400	14400
Mora	300	700	1000	150	200	350	18.0	8.0	15.5	2700	400	3100
Quay	6300	83700	90000	3300	5400	8700	29.0	6.0	14.7	95700	32400	128100
Roosevelt	6000	44000	50000	4000	21500	25500	29.5	8.0	11.4	118000	172000	290000
San Miguel	600	400	1000	400	100	500	25.0	10.0	22.0	10000	9000	11000
Torrance	500	4500	5000	400	1200	1600	40.0	8.0	16.0	16000	1000	25600
Union	1800	2700	4500	900	1600	2500	40.0	6.0	18.2	36000	9600	45600
NORTHEAST DISTRICT	98500	254500	353000	82100	48100	130200	38.7	8.5	27.5	3174750	407800	3582550
Catron	30	50	80	0	0	0	....	....	....	....	....	....
Grant	650	350	1000	100	0	100	35.0	....	35.0	3500	....	3500
Hidalgo	2500	0	2500	2400	0	2400	62.0	....	62.0	148800	....	148800
Luna	1300	0	1300	1100	0	1100	41.0	....	41.0	45100	....	45100
Sierra	20	0	20	0	0	0	....	....	....	....	....	....
Socorro	300	0	300	200	0	200	40.0	....	40.0	8000	....	8000
SOUTHWEST DISTRICT	4800	400	5200	3800	0	3800	54.1	....	54.1	205400	....	205400
Chaves	900	0	900	300	0	300	32.0	....	32.0	9600	....	9600
Dona Ana	60	0	60	50	0	50	40.0	....	40.0	2000	....	2000
Eddy	410	0	410	120	0	120	40.0	....	40.0	4800	....	4800
Lea	190	30	220	0	0	0	....	....	....	....	....	....
Lincoln	50	0	50	0	0	0	....	....	....	....	....	....
Otero	40	20	60	30	0	30	35.0	....	35.0	1050	....	1050
SOUTHEAST DISTRICT	1650	50	1700	500	0	500	34.9	....	34.9	17450	....	17450
STATE	109400	262600	372000	88900	52100	141000	39.2	8.9	28.0	3483300	464700	3948000

WINTER WHEAT: ACREAGE, YIELD, AND PRODUCTION BY COUNTIES, IRRIGATED AND NON-IRRIGATED, 1968 <sup>1/</sup>

County	Acres planted			Acres harvested			Yield per harvested acre			Production		
	Irrig.	Non-Irrig.	Total	Irrig.	Non-Irrig.	Total	Irrig.	Non-Irrig.	Total	Irrig.	Non-Irrig.	Total
	Acres	Acres	Acres	Acres	Acres	Acres	Bushels	Bushels	Bushels	Bushels	Bushels	Bushels
Bernalillo	600	200	800	350	150	500	32.0	20.0	28.4	11200	3000	14200
McKinley	100	300	400	70	280	350	25.0	13.0	15.4	1750	3640	5390
Rio Arriba	200	4800	5000	150	4450	4600	26.0	20.0	20.2	3900	89000	92900
Sandoval	300	200	500	250	150	400	33.0	10.0	24.4	8250	1500	9750
San Juan	100	50	150	100	0	100	41.0	....	41.0	4100	....	4100
Santa Fe	500	1300	1800	500	1200	1700	40.0	17.0	23.8	20000	20400	40400
Taos	500	100	600	500	50	550	23.0	13.0	22.1	11500	650	12150
Valencia	1000	1100	2100	800	700	1500	45.0	15.0	31.0	36000	10500	46500
NORTHWEST DISTRICT	3300	8050	11350	2720	6980	9700	35.6	18.4	23.2	96700	128690	225390
Colfax	1500	2500	4000	1400	1900	3300	25.0	10.0	16.4	35000	19000	54000
Curry	64000	104000	168000	62000	97000	159000	49.0	18.0	30.1	3038000	1746000	4784000
De Baca	300	0	300	250	0	250	46.0	....	46.0	11500	....	11500
Guadalupe	100	0	100	50	0	50	30.0	....	30.0	1500	....	1500
Harding	500	8800	9300	300	4900	5200	25.0	13.0	13.7	7500	63700	71200
Mora	300	600	900	200	400	600	19.5	10.0	13.2	3900	4000	7900
Quay	9000	77000	86000	8000	65000	73000	25.5	14.5	15.7	204000	942500	1146500
Roosevelt	9000	36000	45000	8500	33500	42000	38.0	18.5	22.4	323000	619750	942750
San Miguel	600	300	900	500	100	600	25.0	11.0	22.7	12500	1100	13600
Torrance	1100	3400	4500	1000	3200	4200	50.0	12.0	21.0	50000	38400	88400
Union	3600	1000	4600	3200	900	4100	40.0	14.0	34.3	128000	12600	140600
NORTHEAST DISTRICT	90000	233600	323600	85400	206900	292300	44.7	16.7	24.8	3814900	3447050	7261950
Catron	40	0	40	0	0	0	....	....	....	....	....	....
Grant	500	300	800	450	100	550	35.0	10.0	30.5	15750	1000	16750
Hidalgo	1800	0	1800	1500	0	1500	57.0	....	57.0	85500	....	85500
Luna	200	0	200	100	0	100	44.0	....	44.0	4400	....	4400
Sierra	20	0	20	0	0	0	....	....	....	....	....	....
Socorro	240	0	240	200	0	200	30.0	....	30.0	6000	....	6000
SOUTHWEST DISTRICT	2800	300	3100	2250	100	2350	49.6	10.0	47.9	111650	1000	112650
Chaves	400	0	400	300	0	300	35.0	....	35.0	10500	....	10500
Dona Ana	60	0	60	50	0	50	41.0	....	41.0	2050	....	2050
Eddy	200	0	200	150	0	150	40.0	....	40.0	6000	....	6000
Lea	170	30	200	100	0	100	50.0	....	50.0	5000	....	5000
Lincoln	40	0	40	0	0	0	....	....	....	....	....	....
Otero	30	20	50	30	20	50	40.0	13.0	29.2	1200	260	1460
SOUTHEAST DISTRICT	900	50	950	630	20	650	39.3	13.0	38.5	24750	260	25010
STATE	97000	242000	339000	91000	214000	305000	44.5	16.7	25.0	4048000	3577000	7625000

<sup>1/</sup> Preliminary



## New Mexico Agricultural Statistics

ALL HAY: ACREAGE, YIELD, AND PRODUCTION BY COUNTIES, 1967 and 1968

County	1967			1968 <sup>1/</sup>		
	Acres harvested	Yield per acre	Production	Acres harvested	Yield per acre	Production
	Acres	Tons	Tons	Acres	Tons	Tons
Bernalillo	7500	3.3	24750	7600	3.5	26840
McKinley	1600	1.8	2880	1500	1.6	2400
Rio Arriba	10500	1.5	15750	10300	1.6	16540
Sandoval	7800	2.0	15600	8200	2.3	18500
San Juan	15000	3.3	49500	15300	3.3	50490
Santa Fe	4400	2.2	9680	4100	3.0	12300
Taos	7700	1.5	11550	7500	1.7	12750
Valencia	14600	3.8	55480	14800	3.9	58200
NORTHWEST DISTRICT	69100	2.68	185190	69300	2.86	198020
Colfax	16500	1.2	19800	16200	1.3	20920
Curry	5300	2.2	11660	6000	3.4	20200
De Baca	4300	3.3	14190	4800	4.4	21120
Guadalupe	2800	2.2	6160	3000	2.1	6300
Harding	6400	1.2	7680	6500	1.3	8450
Mora	13800	1.1	15180	14000	1.2	16800
Quay	7300	4.0	29200	7100	4.0	28400
Roosevelt	5100	3.6	18360	5300	3.5	18550
San Miguel	5300	0.9	4770	5200	1.0	5200
Torrance	4200	3.0	12600	4300	3.5	15050
Union	8700	1.0	8700	8800	1.2	10560
NORTHEAST DISTRICT	79700	1.86	148300	81200	2.11	171550
Catron	600	2.8	1680	700	2.9	2030
Grant	3500	3.0	10500	3600	3.0	10800
Hidalgo	3200	4.8	15360	3300	4.4	14520
Luna	2500	4.2	10500	2600	4.2	10920
Sierra	2100	4.8	10080	2200	4.6	10120
Socorro	7500	5.2	39110	7700	5.1	39040
SOUTHWEST DISTRICT	19400	4.50	87230	20100	4.35	87430
Chaves	40800	6.2	252960	41400	6.2	256680
Dona Ana	14000	4.5	63000	13600	5.2	70720
Eddy	33600	5.4	181440	35000	6.0	210000
Lea	8800	3.4	29920	7900	4.8	37920
Lincoln	2400	3.3	7920	2200	3.4	7480
Otero	2200	3.2	7040	2300	4.0	9200
SOUTHEAST DISTRICT	101800	5.33	542280	102400	5.78	592000
STATE	270000	3.57	963000	273000	3.84	1049000

<sup>1/</sup> Preliminary

## New Mexico Agricultural Statistics

ALFALFA HAY: ACREAGE, YIELD, AND PRODUCTION BY COUNTIES, PRACTICALLY ALL IRRIGATED, 1967 and 1968

County	1967			1968 <sup>1/</sup>		
	Acres harvested	Yield per acre	Production	Acres harvested	Yield per acre	Production
	Acres	Tons	Tons	Acres	Tons	Tons
Bernalillo	6400	3.6	23040	6600	3.8	25080
McKinley	1000	2.0	2000	900	1.9	1710
Rio Arriba	5800	1.6	9280	5400	2.0	10800
Sandoval	4500	2.8	12600	5000	3.0	15000
San Juan	13000	3.5	45500	14000	3.3	46200
Santa Fe	4000	2.2	8800	3800	3.1	11780
Taos	6200	1.7	10540	6000	1.8	10800
Valencia	12800	4.0	51200	13400	4.1	54940
NORTHWEST DISTRICT	53700	3.03	162960	55100	3.20	176310
Colfax	5900	2.3	13570	5600	2.4	13440
Curry	1100	5.0	5500	2200	6.2	13640
De Baca	3000	4.4	13200	3800	5.0	19000
Guadalupe	800	3.0	2400	800	3.2	2560
Harding	600	2.2	1320	700	2.4	1680
Mora	3000	1.8	5400	3200	2.6	8320
Quay	6000	4.2	25200	5600	4.4	24640
Roosevelt	3500	4.4	15400	3200	4.2	13440
San Miguel	2600	1.2	3120	2700	1.3	3510
Torrance	3100	3.6	11160	3000	4.0	12000
Union	2300	2.8	6440	2500	2.9	7250
NORTHEAST DISTRICT	31900	3.22	102750	33300	3.59	119480
Catron	400	3.0	1200	500	3.1	1550
Grant	2300	3.4	7820	2400	3.3	7920
Hidalgo	2800	5.0	14000	3000	4.5	13500
Luna	1900	4.5	8550	1800	4.3	7740
Sierra	1500	5.3	7950	1600	4.7	7520
Socorro	6500	5.5	35750	7200	5.2	37440
SOUTHWEST DISTRICT	15400	4.89	75270	16500	4.59	75670
Chaves	38400	6.5	249600	40900	6.3	256360
Dona Ana	12400	5.0	62000	13000	5.4	70200
Eddy	31700	5.6	177520	34000	6.1	207400
Lea	6500	4.2	27300	7000	5.2	36400
Lincoln	2000	3.4	6800	1800	3.5	6300
Otero	1000	3.8	3800	1400	4.2	5880
SOUTHEAST DISTRICT	92000	5.73	527020	98100	5.94	582540
STATE	193000	4.50	868000	203000	4.70	954000

<sup>1/</sup> Preliminary

ALFALFA SEED: ACREAGE, YIELD, AND PRODUCTION BY COUNTIES, ALL IRRIGATED, 1967 and 1968

County	1967			1968 <sup>1/</sup>		
	Acres harvested	Yield per acre	Production	Acres harvested	Yield per acre	Production
	Acres	Pounds	Pounds	Acres	Pounds	Pounds
NORTHEAST DISTRICT	70	140	9800	40	190	7600
SOUTHWEST DISTRICT	0			60	285	17100
Chaves	1210	190	229200	1620	170	275900
Dona Ana	250	260	65000	380	280	106400
Eddy	1070	190	203000	900	265	238000
SOUTHEAST DISTRICT	2530	195	497200	2900	214	620300
STATE	2600	195	507000	3000	215	645000

<sup>1/</sup> Preliminary



**New Mexico Agricultural Statistics**

**BROOMCORN: ACREAGE, YIELD, AND PRODUCTION, BY COUNTIES, IRRIGATED AND NON-IRRIGATED, 1967**

County	Acres Planted		Acres harvested		Yield per harvested acre		Production	
	Irrig.	Non-Irrig.	Irrig.	Non-Irrig.	Irrig.	Non-Irrig.	Irrig.	Non-Irrig.
Curry	800	50	650	120	360	140	39	48
Guadalupe	150	0	150	140	140	100	7	7
Harding	600	50	510	130	220	130	28	36
Quay	11550	2800	6400	155	450	225	495	1125
Roosevelt	14000	5000	8000	175	470	275	600	1775
Union	1500	100	1300	140	360	155	91	109
NORTHEAST DISTRICT	29000	8000	17000	150	460	250	1840	3100
STATE	29000	8000	17000	150	460	250	1840	3100

**BROOMCORN: ACREAGE, YIELD, AND PRODUCTION, BY COUNTIES, IRRIGATED AND NON-IRRIGATED, 1968 1/**

County	Acres Planted		Acres harvested		Yield per harvested acre		Production	
	Irrig.	Non-Irrig.	Irrig.	Non-Irrig.	Irrig.	Non-Irrig.	Irrig.	Non-Irrig.
Curry	700	50	500	250	600	280	15	62
Harding	900	30	700	500	500	255	12	83
Quay	7900	380	6820	575	290	305	109	989
Roosevelt	17900	3000	14300	600	600	310	900	1800
Union	600	50	150	200	465	300	12	18
NORTHEAST DISTRICT	28000	3530	22470	265	595	305	1048	2952
STATE	28000	3530	22470	265	595	305	1048	2952

1/ Preliminary

**New Mexico Agricultural Statistics**

**POTATOES: ACREAGE, YIELD, AND PRODUCTION, BY COUNTIES, ALL IRRIGATED, 1967 and 1968**

County	1967				1968 1/			
	Acres		Yield per	Production	Acres		Yield per	Production
	Planted	Harvested	acre	Cwt.	Planted	Harvested	acre	Cwt.
San Juan	---	---	---	---	400	390	30	11700
Santa Fe	500	450	190	85500	550	530	200	106000
Valencia	100	90	170	15300	200	200	190	38000
NORTHWEST DISTRICT	600	540	187	100800	1150	1120	139	155700
Curry	350	320	300	96000	450	430	225	96800
Torrance	2250	2150	190	407900	2700	2650	190	503500
Other Counties	100	90	170	15300	100	100	180	18000
NORTHEAST DISTRICT	2700	2560	203	519200	3250	3180	194	618300
STATE	3300	3100	200	620000	4400	4300	180	774000

1/ Preliminary.

**SWEETPOTATOES: ACREAGE, YIELD AND PRODUCTION, BY COUNTIES, ALL IRRIGATED, 1967 and 1968**

County	1967				1968			
	Acres		Yield per	Production	Acres		Yield per	Production
	Planted	Harvested	acre	Cwt.	Planted	Harvested	acre	Cwt.
Roosevelt	370	370	90	33000	370	370	110	40700
All other areas	30	30	90	3000	30	30	110	3300
STATE	400	400	90	36000	400	400	110	44000

**PEANUTS PICKED AND THRESHED: ACREAGE, YIELD, AND PRODUCTION BY COUNTIES, ALL IRRIGATED, 1967 and 1968**

County	1967			1968		
	Acres harvested	Yield per acre	Production	Acres harvested	Yield per acre	Production
	Acres	Pounds	Pounds	Acres	Pounds	Pounds
Curry	10	2100	21000	20	2695	54000
Quay	75	1013	76000	75	1185	89000
Roosevelt	7700	2019	15543000	7665	2264	17355000
NORTHEAST DISTRICT	7785	2009	15640000	7760	2255	17498000
Lea	215	1300	280000	140	1411	198000
SOUTHEAST DISTRICT	215	1300	280000	140	1411	198000
STATE	8000	1990	15920000	7900	2240	17696000



**New Mexico Agricultural Statistics**

LETTUCE-EARLY SPRING: ACREAGE, YIELD, AND PRODUCTION, BY COUNTIES, ALL IRRIGATED, 1967 and 1968 1/

County	1967				1968 1/			
	Acres		Yield per harvested acre		Acres		Yield per harvested acre	
	Planted	Harvested	Cwt.	Production	Planted	Harvested	Cwt.	Production
Bernalillo	20	20	250	5000	20	20	240	4800
Valencia	120	100	250	25000	140	140	230	32200
NORTHWEST DISTRICT	140	120	250	30000	160	160	231	37000
Luna, Sierra, & Socorro	150	130	250	32500	380	370	258	95500
SOUTHWEST DISTRICT	150	130	250	32500	380	370	258	95500
Dona Ana	3210	2850	261	743500	4760	4670	250	1167500
SOUTHEAST DISTRICT	3210	2850	261	743500	4760	4670	250	1167500
STATE	3500	3100	260	806000	5300	5200	250	1300000

1/ Preliminary

LETTUCE-EARLY FALL: ACREAGE, YIELD, AND PRODUCTION, BY COUNTIES, ALL IRRIGATED, 1967 and 1968

County	1967				1968 1/			
	Acres		Yield per harvested acre		Acres		Yield per harvested acre	
	Planted	Harvested	Cwt.	Production	Planted	Harvested	Cwt.	Production
Bernalillo	20	20	200	4000	20	20	200	4000
Valencia	80	80	210	16800	150	150	220	33000
NORTHWEST DISTRICT	100	100	208	20800	170	170	218	37000
Torrance	400	300	210	63000	910	750	220	165000
NORTHEAST DISTRICT	400	300	210	63000	910	750	220	165000
Luna & Sierra	220	210	250	52500	460	450	280	126000
SOUTHWEST DISTRICT	220	210	250	52500	460	450	280	126000
Dona Ana	4280	3990	254	1013700	5260	5030	221	1112000
SOUTHEAST DISTRICT	4280	3990	254	1013700	5260	5030	221	1112000
STATE	5000	4600	250	1150000	6800	6400	225	1440000

1/ Preliminary

TOMATOES FOR PROCESSING: ACREAGE, YIELD, AND PRODUCTION, BY COUNTIES, ALL IRRIGATED, 1967 and 1968

County	1967				1968 1/			
	Acres		Yield per harvested acre		Acres		Yield per harvested acre	
	Planted	Harvested	Tons	Production	Planted	Harvested	Tons	Production
Luna	100	90	10.0	890	...	...	...	...
SOUTHWEST DISTRICT	100	90	10.0	890	...	...	...	...
Dona Ana	400	350	13.0	4550	...	...	...	...
Otero	200	160	11.0	1760	...	...	...	...
SOUTHEAST DISTRICT	600	510	12.4	6310	1100	900	14.0	12600
STATE	700	600	12.0	7200	1100	900	14.0	12600

1/ Preliminary.

**New Mexico Agricultural Statistics**

ONIONS-EARLY SUMMER: ACREAGE, YIELD AND PRODUCTION, BY COUNTIES, ALL IRRIGATED, 1967 AND 1968

County	1967				1968			
	Acres		Yield per harvested acre		Acres		Yield per harvested acre	
	Planted	Harvested	Cwt.	Production	Planted	Harvested	Cwt.	Production
Bernalillo	70	60	275	16500	40	40	250	10000
Santa Fe	20	20	260	5200	20	20	270	5400
Valencia	150	130	270	35100	300	270	290	78200
NW DISTRICT	240	210	270	56800	360	330	284	93600
Roosevelt	120	110	260	28600	120	110	290	31900
Torrance	30	30	290	8700	...	...	...	...
NE DISTRICT	150	140	266	37300	120	110	290	31900
Luna	120	110	320	35200	100	90	280	25200
Sierra	50	40	300	12000	100	80	290	23200
Socorro	40	40	400	16000	50	50	290	14500
SW DISTRICT	210	190	333	63200	250	220	286	62900
Dona Ana	4000	3800	320	1216000	3400	3100	305	945500
Eddy	100	90	240	21600	100	90	290	26100
Lea	300	270	230	62100	270	250	280	70000
SE DISTRICT	4400	4160	312	1299700	3770	3440	303	1041600
STATE	5000	4700	310	1457000	4500	4100	300	1230000

APPLES: TREES 1968 AND PRODUCTION 1967 AND 1968

County	Total trees 1/		Production	
	1968		1967	
	Number	Bushels	Bushels	1968 2/
Bernalillo	9000	0	0	16400
Rio Arriba	93000	500	500	282000
Sandoval	19400	0	0	38200
San Juan	34200	20000	20000	177000
Santa Fe	17400	0	0	70300
Valencia	8400	0	0	24700
NW DISTRICT	181400	20500	20500	608600
De Baca	3200	7500	7500	9600
NE DISTRICT	3200	7500	7500	9600
Grant	12300	500	500	21800
Sierra	1410	0	0	6600
SW DISTRICT	13710	500	500	28400
Chaves-Dona Ana-Otero	39690	46500	46500	113400
Lincoln	44000	25000	25000	250000
SW DISTRICT	83690	71500	71500	363400
STATE	282000	100000	100000	1010000

1/ Orchards of 100 or more trees. 2/ Preliminary.



## Livestock Summary

New Mexico ranchers and farmers received an all time high value for their marketings of livestock and livestock products during 1968. The cash receipts of \$239,278,000 from livestock and livestock products exceeded the previous high of \$221,041,000 received in 1967. The cash receipts from livestock and livestock products in 1968 represent 71 percent of the total cash receipts from all agricultural products marketed in New Mexico.

The cattle feeding industry highlighted the year with its continued expansion. An all time high inventory level of 209,000 head on January 1, 1969 topped the previous high of 185,000 head on January 1, 1968. Current indications point toward an even greater expansion in 1969. A table showing the number of feed lots and cattle marketings by size groups on page 34 tells the story of the expansion quite well. Data on lots, capacity and inventory number by counties are shown on page 42.

The January 1, 1969 inventory of stock cattle was down 2 percent from 1968. The decrease represents in part a gradual change from a cow-calf operation to summer grazing of steers and heifers. Since the inventory represents cattle and calves on hand January 1, some of the steers and heifers are not included because they had been shipped out of the State during the October-November shipping season.

Dairy cattle on hand January 1, 1969 dropped 1,000 head from January 1, 1968 to 39,000 head. Milk production during 1968 reached an all time high of 315 million pounds up from the 307 million pounds produced in 1967. Milk production per cow during 1968 continued the upward trend with a high of 8,290 pounds.

Favorable feeder lamb prices in neighboring states encouraged early shipping of lambs and hence discouraged sheep feeding in New Mexico. The January 1, 1969 inventory of sheep on feed was 41,000 head, substantially below the January 1, 1968 level of 50,000 head. Stock sheep continued to decline with the January 1, 1969 inventory level at 799,000 head, off 24,000 head from January 1, 1968. Shorn wool production in New Mexico during 1968 totaled 7,374,000 pounds and brought wool producers \$3,171,000 excluding incentive payments.

Chaves County led the State in a dramatic change in the hog and pig business during 1968. Inventory levels for the entire State were 48,000 head on January 1, 1969, 42,000 head on January 1, 1968 and 38,000 head on January 1, 1967. Several disease-free controlled environment operations have been constructed in New Mexico recently and have contributed to the growth of the industry.

Chickens on farms in New Mexico are estimated at 963,000 head as of January 1, 1969, up 3 percent from January 1, 1968. Of the total, 741,000 head are hens and pullets of laying age. A new commercial operation and expansion of others directly contributed to the increase.

During the year we also saw a change in the regulation for commercial slaughtering plants in New Mexico requiring a Federal-State inspection of all slaughtered animals. In 1968 the commercial production of red meat from New Mexico plants were 190,525,000 pounds compared to 173,686,000 pounds in 1967. All species slaughtered in 1968 were above the 1967 level. The number slaughtered for 1968 and 1967 are as follows: Cattle: 313,800 and 288,200; hogs: 105,300 and 100,100; sheep: 62,800 and 44,500.

### LIVESTOCK AND POULTRY: NUMBER ON FARMS AND RANCHES, JANUARY 1, 1967, 1968, 1969

Class	Number			Class	Number		
	1967	1968	1969 <sup>1/</sup>		1967	1968	1969 <sup>1/</sup>
	1,000 head	1,000 head	1,000 head		1,000 head	1,000 head	1,000 head
ALL CATTLE <sup>2/</sup>	1333	1346	1346	ALL SHEEP & LAMBS	955	873	840
Kept for Milk	63	61	58	On feed	68	50	41
Cows 2 yrs. & over	41	40	39	Stock sheep	887	823	799
Heifers 1-2 years	11	10	9	Lambs			
Heifer Calves	11	11	10	Ewes	151	133	133
Beef Cattle	1270	1285	1288	Wethers & Rams	31	22	18
Cows 2 yrs. & over	696	696	690	1 Year & Older			
Heifers 1-2 years	124	124	136	Ewes	668	635	616
Calves	336	333	303	Rams	32	29	28
Steers 1 yr. & over	90	108	135	Wethers	5	4	4
Bulls 1 yr. & over	24	24	24				
CHICKENS	899	934	963	HOGS AND PIGS	38	42	48
Hens and pullets of laying age	712	748	741				
Other	187	186	222				

<sup>1/</sup> Preliminary.

<sup>2/</sup> Includes January 1 Cattle on feed inventory.

### NUMBER, VALUE PER HEAD, AND TOTAL VALUE OF LIVESTOCK AND POULTRY ON HAND JANUARY 1, 1967, 1968, and 1969

Class	Number			Value Per Head			Total Value		
	1967	1968	1969 <sup>1/</sup>	1967	1968	1969 <sup>1/</sup>	1967	1968	1969 <sup>1/</sup>
	1,000 head	1,000 head	1,000 head	Dollars	Dollars	Dollars	1,000 dollars	1,000 dollars	1,000 dollars
All Cattle	1333	1346	1346	137.00	136.00	145.00	182621	183056	195170
Cows for Milk	41	40	39	201.00	215.00	215.00	8241	8600	8385
Stock Sheep	887	823	799	20.60	18.60	20.50	18272	15308	16380
Hogs & Pigs	38	42	48	30.00	24.10	23.10	1140	1012	1109
Chickens	899	934	963	.97	1.05	.96	872	981	924

<sup>1/</sup> Preliminary.



## CATTLE AND CALVES

Year	On hand January 1		Calves born		Inshipments 1,000 head	Marketings		Farm slaughter	Deaths	
	All cattle and calves	All cows 2 years and older	Number	As percentage of cows 2 yrs. and older 1/		Cattle	Calves	Cattle and Calves	Cattle	Calves
	1,000 head	1,000 head	1,000 head	Percent		1,000 head	1,000 head	1,000 head	1,000 head	1,000 head
1966 .....	1307	750	645	86	376	694	243	5	15	38
1967 .....	1333	737	649	88	427	736	262	7	18	40
1968 .....	1346	736	633	86	466	757	279	7	18	38

## SHEEP AND LAMBS

Year	On hand January 1 1,000 head	Lambs saved		Inshipments Sheep and Lambs 1,000 head	Marketings 2/		Farm slaughter	Deaths	
		Number	As percent of ewes 1 year and older		Sheep	Lambs	Sheep and Lambs	Sheep	Lambs
		1,000 head	Percent		1,000 head	1,000 head	1,000 head	1,000 head	1,000 head
1966 .....	972	540	79	62	148	266	37	85	83
1967 .....	955	502	75	55	142	277	35	105	80
1968 .....	873	512	81	54	103	291	35	90	80

## HOGS AND PIGS

Year	On hand January 1 1,000 head	December-May		June-November		Inshipments 1,000 head	Disposition		Deaths 1,000 head
		Sows farrowed	Pig crop	Sows farrowed	Pig crop		Marketings 2/	Farm slaughter	
		1,000 head	1,000 head	1,000 head	1,000 head		1,000 head	1,000 head	
1966 .....	35	4	29	4	32	5	52	5	6
1967 .....	38	5	35	5	35	3	62	5	4
1968 .....	42	6	40	6	42	4	71	5	4

1/ Not strictly a calving rate. Figure represents calves born expressed as a percentage of January 1 inventory of cows and heifers 2 years old and over and not the number of all cows and heifers giving birth to calves during the year.

2/ Excludes inter-farm sales, but includes animals custom slaughtered for use on farms where produced.

## LIVESTOCK: PRODUCTION AND INCOME, 1966, 1967, 1968

## CATTLE AND CALVES

Year	Production 1/ 1,000 pounds	Marketings 2/ 1,000 pounds	Price per 100 pounds		Value of production 1,000 dollars	Cash receipts 3/ 1,000 dollars	Value of home consumption 1,000 dollars	Gross income 1,000 dollars	Cost of inshipments 1,000 dollars
			Cattle Dollars	Calves Dollars					
1966 .....	443060	648676	23.40	26.40	106546	154589	1455	156044	49286
1967 .....	473700	704980	23.20	26.40	113097	166709	1681	168390	55971
1968 .....	469210	725361	24.40	28.10	118276	181087	1586	182673	64056

## SHEEP AND LAMBS

Year	Production 1/ 1,000 pounds	Marketings 2/ 1,000 pounds	Price per 100 pounds		Value of production 1,000 dollars	Cash receipts 3/ 1,000 dollars	Value of home consumption 1,000 dollars	Gross income 1,000 dollars	Cost of inshipments 1,000 dollars
			Sheep Dollars	Lambs Dollars					
1966 .....	32720	37215	7.80	24.40	6009	6371	402	6773	527
1967 .....	27356	37456	7.10	22.20	4825	5957	359	6316	411
1968 .....	29444	34543	7.70	23.90	5858	6405	402	6807	433

## HOGS

Year	Production 1/ 1,000 pounds	Marketings 2/ 1,000 pounds	Price per 100 pounds Dollars	Value of production 1,000 dollars	Cash receipts 3/ 1,000 dollars	Value of home consumption 1,000 dollars	Gross income 1,000 dollars	Cost of inshipments 1,000 dollars
1967 .....	15024	13187	19.20	2885	2532	353	2885	43
1968 .....	17952	15730	18.40	3303	2894	331	3225	55

1/ Adjustments made for inshipments and changes in inventory.

2/ Excludes inter-farm sales.

3/ Includes receipts from marketings and from sales of farm-slaughtered meat.



NUMBER OF CATTLE FEEDLOTS AND FED CATTLE MARKETED BY SIZE OF FEEDLOT CAPACITY  
1962-1968 1/

Year	Under 1,000 head		1,000-3,999 head		4,000-7,999 head		8,000-15,999 head		16,000 and over head		Total all Feedlots	
	Lots	Cattle Mkted.	Lots	Cattle Mkted.	Lots	Cattle Mkted.	Lots	Cattle Mkted.	Lots	Cattle Mkted.	Lots	Cattle Mkted.
	No.	1,000 head	No.	1,000 head	No.	1,000 head	No.	1,000 head	No.	1,000 head	No.	1,000 head
1962	96	26	22	39	7	18	5	46	---	---	130	129
1963	98	14	23	43	8	24	5	64	---	---	134	145
1964	100	17	23	57	7	22	5	70	---	---	135	166
1965	91	11	30	49	6	21	2/ 8	2/ 92	---	---	135	173
1966	83	10	32	50	11	32	2/ 9	2/112	---	---	135	204
1967	52	12	32	36	11	50	2/11	2/140	---	---	106	238
1968	36	10	22	56	6	45	8	82	4	123	76	316

1/ Number of feedlots with 1,000-head or more capacity is number of lots operating any time during year. Number under 1,000-head capacity and total number of all feedlots is number at end of year.  
2/ Lots and marketings from larger size groups are included to avoid disclosing individual operations.

CATTLE ON FEED: NUMBER ON FEED, PLACEMENTS, AND MARKETINGS, BY QUARTERS

Year	NUMBER ON FEED			PLACED ON FEED				NUMBER MARKETED				
	Jan. 1	Apr. 1	July 1	Oct. 1	Jan. 1 - March 31	Apr. 1 - June 30	July 1 - Sept. 30	Oct. 1 - Dec. 31	Jan. 1 - March 30	Apr. 1 - June 30	July 1 - Sept. 30	Oct. 1 - Dec. 31
	----- 1,000 Head -----											
1966	112	122	111	108	62	45	48	77	52	56	51	45
1967	140	153	134	126	63	46	63	111	50	65	71	52
1968	185	170	147	160	67	63	94	116	82	86	81	67
1969	209	192	...	...	76	..	..	...	93	..	..	..

CATTLE AND CALVES ON FEED: NUMBER ON FEED BY WEIGHT GROUPS, CLASSES, AND LENGTH OF TIME, BY QUARTERS, 1966-69

Year and Month	Number on feed by weight groups					Number on feed by classes			Number on feed by time			
	Under 500 pounds	500-699 pounds	700-899 pounds	900-1099 pounds	1100 pounds and over	Steers and steer calves	Heifers and heifer calves	Cows and others	Less than 3 months	3 to 6 months	6 months and over	
	-----Thousand Head-----											
1966												
January 1	19	40	39	13	1	64	46	2	55	46	11	
April 1	13	55	35	18	1	71	49	2	60	50	12	
July 1	13	35	42	20	1	67	43	1	44	51	16	
October 1	19	33	30	24	2	66	41	1	47	42	19	
1967												
January 1	25	43	49	21	2	87	50	3	76	46	18	
April 1	18	56	48	29	2	78	72	3	62	74	17	
July 1	13	40	54	26	1	72	61	1	44	56	34	
October 1	29	40	29	27	1	74	52	-	63	40	23	
1968												
January 1	22	66	69	25	3	103	80	2	110	60	15	
April 1	15	65	53	34	3	93	75	2	65	88	17	
July 1	12	45	61	28	1	81	64	2	62	59	26	
October 1	24	62	45	24	5	96	63	1	94	53	13	
1969												
January 1	30	71	73	28	7	130	77	2	115	79	15	
April 1 1/	14	60	74	43	1	119	71	2	75	86	31	

1/ Preliminary

LIVESTOCK SLAUGHTER: NUMBER SLAUGHTERED, AVERAGE AND TOTAL LIVELINEWEIGHT, BY SPECIES, 1966, 1967, and 1968

Year	Cattle			Calves			Hogs			Sheep and Lambs		
	Number	Average liveweight per head	Total liveweight	Number	Average liveweight per head	Total liveweight	Number	Average liveweight per head	Total liveweight	Number	Average liveweight Per head	Total liveweight
	1,000 head	Pounds	1,000 pounds	1,000 head	Pounds	1,000 pounds	1,000 head	Pounds	1,000 pounds	1,000 head	Pounds	1,000 pounds
1966	285.3	956	272799	1.1	465	512	91.3	233	21246	32.7	106	3466
1967	288.2	962	277289	1.3	486	632	100.1	230	23061	44.5	106	4698
1968	313.8	965	302890	.9	490	441	105.3	232	24460	62.8	110	6886



FARM CHICKENS: NUMBER RAISED, PRODUCED, DISPOSITION, AND INCOME, 1966, 1967 AND 1968 1/

Year	Raised 2/	Lost 3/	Produced 4/	Consumed In Farm Household	Sold	Pounds Produced 4/	Pounds Consumed In Farm Household	Pounds Sold	Price Per Pound	Value of Production	Cash Receipts	Value of Chickens Consumed	Gross Income
	1,000 head	1,000 head	1,000 head	1,000 head	1,000 head	1,000 pounds	1,000 pounds	1,000 pounds	Cents	1,000 dollars	1,000 dollars	1,000 dollars	1,000 dollars
1966	722	146	576	85	450	2056	272	1800	8.5	175	153	23	176
1967	787	147	640	81	524	2829	267	2253	8.2	232	185	22	207
1968 5/	771	145	626	73	524	2537	248	2201	9.8	249	216	24	240

1/ Does not include commercial broilers. 2/ Does not include young chickens lost. 3/ Loss during the year of chickens on hand January 1.  
4/ Production is the number (or pounds) available for utilization during the year. 5/ Preliminary.

CHICKENS AND EGGS: CHICKENS RAISED, AVERAGE NUMBER OF LAYERS ON HAND, EGG PRODUCTION, PRICE, AND INCOME, 1966, 1967 AND 1968

Year	Chickens Raised	Average Yearly Number of Layers on Hand	Eggs Produced	Eggs Consumed in Farm Household	Eggs Sold	Price Per Dozen	Cash Receipts	Value of Eggs Consumed in Farm Household	Gross Income
	1,000 head	1,000 head	1,000,000 eggs	1,000,000 eggs	1,000,000 eggs	Cents	1,000 dollars	1,000 dollars	1,000 dollars
1966	722	709	153	5	148	44.0	5427	183	5610
1967	787	700	145	6	139	37.5	4344	188	4532
1968 1/	771	722	159	5	154	39.9	5120	166	5286

1/ Preliminary.

MILK: PRODUCTION, DISPOSITION, PRICE AND INCOME, 1966, 1967 AND 1968

Year	Milk Cows On Farms 1/	Milk Production Per Cow 2/	Total Milk Production 2/	Disposition of Milk Produced				Value of Sales (Receipts From Farm Marketings)	Gross Farm Income From Dairy Products	
				Used on Farms Where Produced	Sold Wholesale		Milk and Cream Retailled by Farmer			
					Whole Milk	Price Per 100 Pounds	Milk Price Per Quart			Price Per Quart
	1,000 head	Pounds	Million pounds	Million pounds	Million pounds	Dollars	Million quarts	Cents	1,000 dollars	1,000 dollars
1966	38	7740	294	15	245	5.71	16	23.2	17702	18399
1967	38	8080	307	14	260	5.80	15	24.3	18725	19364
1968 3/	38	8290	315	13	266	5.86	17	27.1	20195	20797

1/ Average number on farms during year, excluding heifers not yet fresh. 2/ Excludes milk sucked by calves. 3/ Preliminary.

WOOL: NUMBER OF SHEEP SHORN, FLEECE WEIGHT, PRODUCTION, PRICE AND VALUE, 1966, 1967 AND 1968

Year	Sheep Shorn 1/	Average Weight of Fleece	Production	Price Per Pound	Total Value
	1,000 head	Pounds	1,000 pounds	Cents	1,000 dollars
1966	924	9.5	8734	48.0	4202
1967	884	9.6	8462	39.0	3300
1968 2/	806	9.1	7374	43.0	3171

1/ Includes shearing at commercial feeding yards. 2/ Preliminary.

HAIR: NUMBER OF GOATS CLIPPED, FLEECE WEIGHT, PRODUCTION, PRICE, AND VALUE, 1966, 1967 AND 1968

Year	Goats Clipped	Average Weight of Fleece	Production	Price Per Pound	Total Value
	1,000 head	Pounds	1,000 pounds	Cents	1,000 dollars
1966	52	4.5	234	42.0	98
1967	61	4.2	259	36.0	93
1968 1/	61	4.1	249	43.0	107

1/ Preliminary.

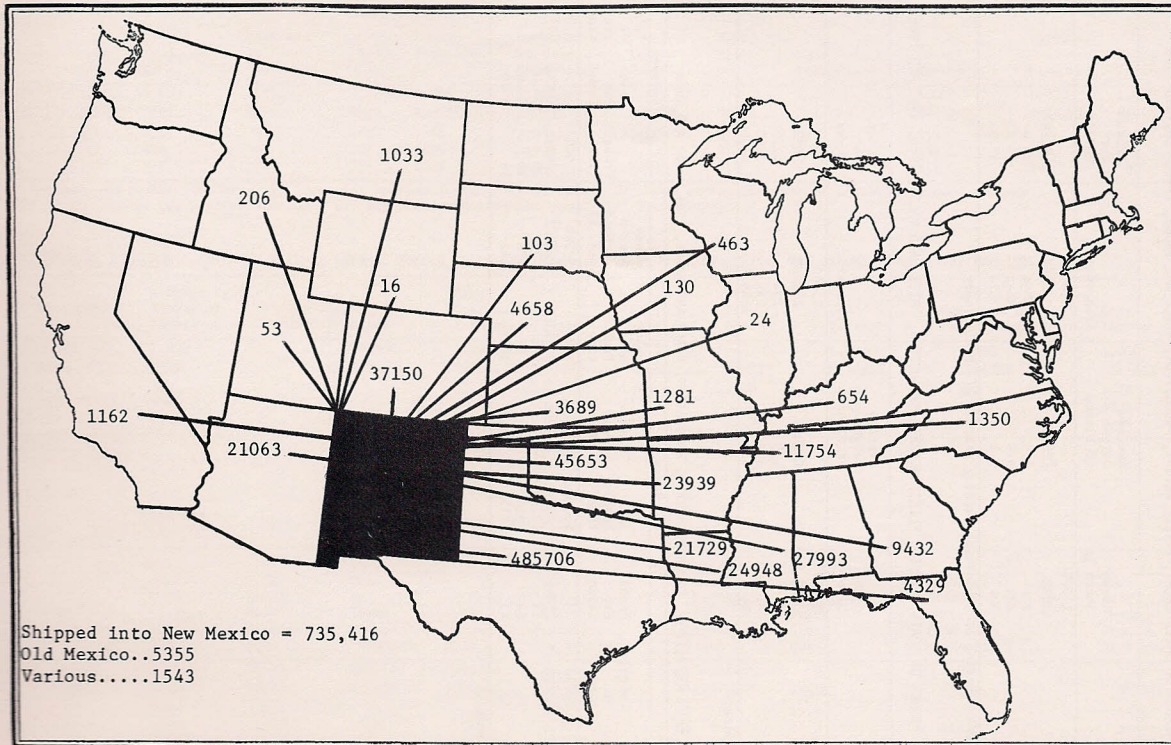
BEES AND HONEY: COLONIES, YIELD, PRODUCTION, PRICE AND VALUE, 1966, 1967 AND 1968

Year	Colonies of Bees	Pound Per Colony	Production	Honey		Beehive			
				Price Per Pound	Value of Production	Stocks on Hand Dec. 15	Production	Price Per Pound	Value of Production
	1,000	Pounds	1,000 pounds	Cents	1,000 dollars	1,000 pounds	1,000 pounds	Cents	1,000 dollars
1966	14	73	1022	13.9	142	368	20	44.0	7
1967	15	54	810	12.0	97	178	12	55.0	7
1968 1/	15	61	915	11.0	101	146	18	65.0	12

1/ Preliminary.

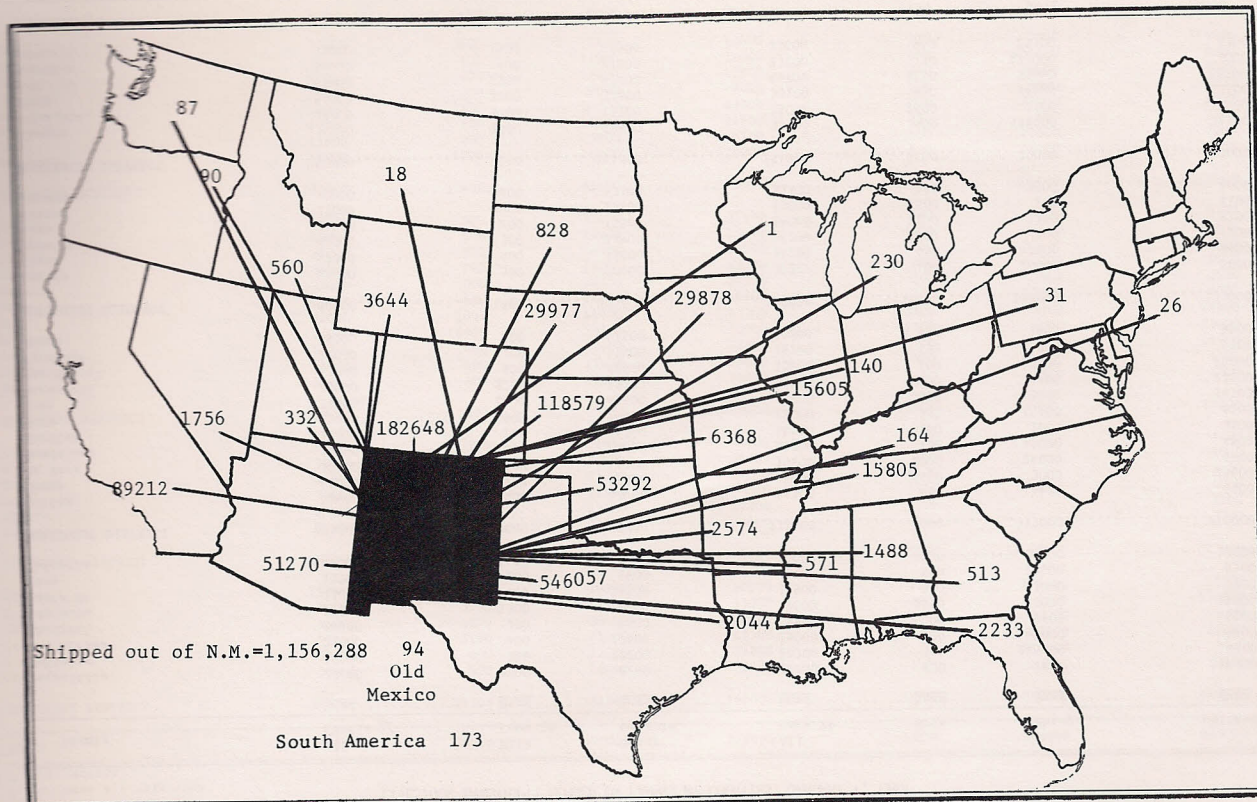


CATTLE SHIPPED INTO NEW MEXICO BY STATE OF ORIGIN, 1968 1/



1/ Includes shipments to the Clovis Yards.

CATTLE SHIPPED OUT OF NEW MEXICO BY STATE OF DESTINATION, 1968 1/





LIVESTOCK INVENTORY: NUMBER ON FARMS, BY COUNTIES, JANUARY 1, 1968

County	All Cattle <u>1/</u>	Milk Cows 2+	Other Cows 2+	All Cows 2+	Hogs	Sheep	Chickens
	Head	Head	Head	Head	Head	Head	Head
Bernalillo	23000	3800	6200	10000	900	7400	149000
McKinley	18000	100	12200	12300	500	125000	4500
Rio Arriba	29000	400	17600	18000	300	40000	9500
Sandoval	14000	200	9600	9800	200	9600	6000
San Juan	19000	1300	10700	12000	1200	78000	11000
Santa Fe	23000	400	11500	11900	300	1000	7700
Taos	11000	200	5900	6100	500	22000	9500
Valencia	48000	4400	26500	30900	1000	30000	12800
NORTHWEST DISTRICT	185000	10800	100200	111000	4900	313000	210000
Colfax	58000	400	33700	34100	450	4400	6400
Curry	68000	700	15300	16000	4400	3000	29600
De Baca	30000	400	16200	16600	1000	24000	4900
Guadalupe	30000	200	19000	19200	120	46000	4800
Harding	37000	200	24300	24500	100	1000	3500
Mora	21000	600	14400	15000	150	12500	6500
Quay	74000	1100	41900	43000	3800	3400	14700
Roosevelt	73000	9200	29200	38400	6600	4400	27200
San Miguel	53000	400	32600	33000	200	3700	20400
Torrance	27000	700	17500	18200	630	29000	5500
Union	89000	500	41500	42000	950	1600	9500
NORTHEAST DISTRICT	560000	14400	285600	300000	18400	133000	133000
Catron	46000	300	30000	30300	100	14000	5000
Grant	52000	400	33800	34200	450	1500	4600
Hidalgo	42000	300	23900	24200	3000	200	4200
Luna	36000	200	15800	16000	1100	1100	5100
Sierra	27000	2800	15200	18000	1500	200	4100
Socorro	50000	200	33100	33300	250	3000	4000
SOUTHWEST DISTRICT	253000	4200	151800	156000	6400	20000	27000
Chaves	134000	1400	28600	30000	3600	156000	26500
Dona Ana	28000	3700	11300	15000	2400	2900	45200
Eddy	54000	2300	30800	33100	950	54600	50500
Lea	65000	2300	42400	44700	4150	35000	26700
Lincoln	34000	400	22800	23200	250	133000	4000
Otero	33000	500	22500	23000	950	25500	4300
SOUTHEAST DISTRICT	348000	10600	158400	169000	12300	407000	564000
STATE	1346000	40000	696000	736000	42000	873000	934000

1/ Includes all milk cows.

LIVESTOCK INVENTORY: NUMBER ON FARMS, BY COUNTIES, JANUARY 1, 1969 1/

County	All Cattle <u>2/</u>	Milk Cows 2+	Other Cows 2+	All Cows 2+	Hogs	Sheep	Chickens
	Head	Head	Head	Head	Head	Head	Head
Bernalillo	22000	3600	6400	10000	700	7000	144000
McKinley	18000	100	11900	12000	450	124000	4000
Rio Arriba	27000	400	17400	17800	250	39000	7000
Sandoval	14000	200	9600	9800	200	9500	4500
San Juan	20000	1200	10800	12000	600	77000	9000
Santa Fe	22000	400	11200	11600	350	800	7200
Taos	11000	200	5900	6100	600	20500	7000
Valencia	46000	4300	26400	30700	850	28200	9300
NORTHWEST DISTRICT	180000	10400	99600	110000	4000	306000	192000
Colfax	58000	300	33800	34100	500	4000	5700
Curry	68000	600	14900	15500	3400	2400	14500
De Baca	31000	300	16300	16600	1100	22500	4000
Guadalupe	30000	200	19000	19200	200	44000	4000
Harding	35000	200	24100	24300	100	900	2500
Mora	23000	500	14700	15200	100	12000	5000
Quay	72000	1000	41700	42700	3900	3400	11000
Roosevelt	73000	8900	29100	38000	7300	4000	13200
San Miguel	50000	400	32400	32800	400	3500	16200
Torrance	25000	600	17400	18000	900	27800	4400
Union	85000	400	41200	41600	1100	1500	7500
NORTHEAST DISTRICT	550000	13400	284600	298000	19000	126000	88000
Catron	44000	300	29800	30100	150	14000	4200
Grant	50000	400	33600	34000	450	1500	4000
Hidalgo	40000	300	23700	24000	4400	200	2400
Luna	36000	200	15800	16000	1350	1100	4000
Sierra	28000	2700	15100	17800	2400	200	5200
Socorro	50000	200	32900	33100	250	3000	3200
SOUTHWEST DISTRICT	248000	4100	150900	155000	9000	3/ 18000	23000
Chaves	157000	2400	27600	30000	7100	149000	18500
Dona Ana	28000	3900	11100	15000	2400	2500	559000
Eddy	56000	1800	30600	32400	1500	53000	53000
Lea	62000	2100	41200	43300	3450	33500	23000
Lincoln	33000	400	22400	22800	350	129000	3000
Otero	32000	500	22000	22500	1200	23000	3500
SOUTHEAST DISTRICT	368000	11100	154900	166000	16000	390000	660000
STATE	1346000	39000	690000	729000	48000	840000	963000

1/ Preliminary

2/ Includes all milk cows.

3/ District total includes counties for which separate estimates were not made.



SHEEP ON FEED: NUMBER ON FEED, BY COUNTIES, JANUARY 1, 1965-1969

County	1965	1966	1967	1968	1969 <sup>1/</sup>
	<u>Head</u>	<u>Head</u>	<u>Head</u>	<u>Head</u>	<u>Head</u>
NORTHWEST DISTRICT	800	1300	1000	1400	1400
NORTHEAST DISTRICT	1200	500	5500	2100	2000
SOUTHWEST DISTRICT	200	0	0	0	600
Chaves	14300	41300	46000	35000	30000
Eddy	5800	3500	5700	4000	<sup>2/</sup> 0
Lea	500	400	0	0	<sup>2/</sup> 0
Lincoln	6700	5000	7200	6000	<sup>2/</sup> 0
Other Counties	1500	0	2600	1500	7000
SOUTHEAST DISTRICT	28800	50200	61500	46500	37000
STATE	31000	52000	68000	50000	41000

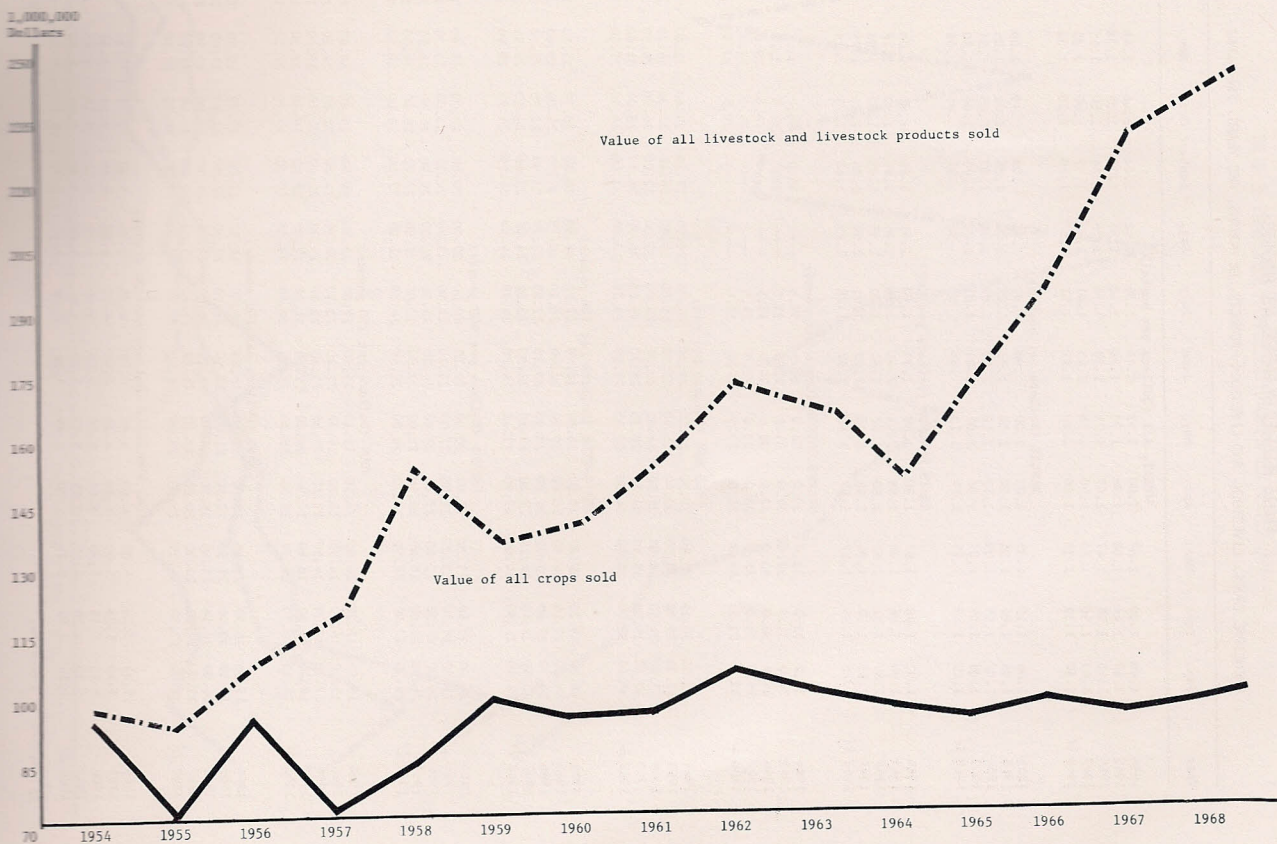
<sup>1/</sup> Preliminary. <sup>2/</sup> Eddy and Lincoln County data combined to eliminate disclosure of individual operations.

CATTLE ON FEED: NUMBER OF FEEDLOTS, CAPACITY, NUMBER ON FEED, BY COUNTIES AND QUARTERS, JANUARY 1, 1966-APRIL 1, 1969

County	Number Of Feedlots January 1, 1969	One Time Capacity January 1, 1969	Jan. 1	Jan. 1	Jan. 1	Apr. 1	July 1	Oct. 1	Jan. 1	Apr. 1
			1966	1967	1968	1968	1968	1968	1968	1969 <sup>1/</sup>
	<u>Number</u>	<u>Head</u>	<u>Head</u>	<u>Head</u>	<u>Head</u>	<u>Head</u>	<u>Head</u>	<u>Head</u>	<u>Head</u>	<u>Head</u>
NORTHWEST DISTRICT <sup>2/</sup>	3	19000	13700	9900	12300	11900	9200	7700	13600	12800
Curry	9	55000	27800	33200	42400	37000	32100	33000	44700	38000
Roosevelt	5	10000	4000	7500	7000	6200	4300	5400	8900	8200
Other Counties <sup>3/</sup>	6	31000	1600	15700	23100	19600	15000	22400	26200	23800
NORTHEAST DISTRICT	20	96000	33400	56400	72500	62800	51400	60800	79800	70000
SOUTHWEST DISTRICT <sup>4/</sup>	10	9000	3300	4500	7300	4200	3400	3000	5600	3800
Chaves	22	113000	51000	60000	80000	76000	69800	75200	93000	89500
Dona Ana	11	11000	5500	3100	4500	5300	3200	2900	4500	5800
Eddy	5	12000	2000	3500	5400	7400	6600	7200	8100	5000
Lea	5	10000	3100	2600	3000	2400	3400	3200	4400	5100
SOUTHEAST DISTRICT	43	146000	61600	69200	92900	91100	83000	88500	110000	105400
STATE	76	270000	112000	140000	185000	170000	147000	160000	209000	192000

<sup>1/</sup> Preliminary. <sup>2/</sup> Includes Bernalillo and Santa Fe. <sup>3/</sup> Includes De Baca, Quay and Union. <sup>4/</sup> Includes Grant, Luna, Sierra, Socorro, Lincoln and Otero.

VALUE OF ALL CROPS SOLD VERSUS VALUE OF ALL LIVESTOCK AND LIVESTOCK PRODUCTS SOLD, NEW MEXICO, 1954-1968





### New Mexico Agricultural Statistics

#### PRICES RECEIVED BY FARMERS AND RANGERS:

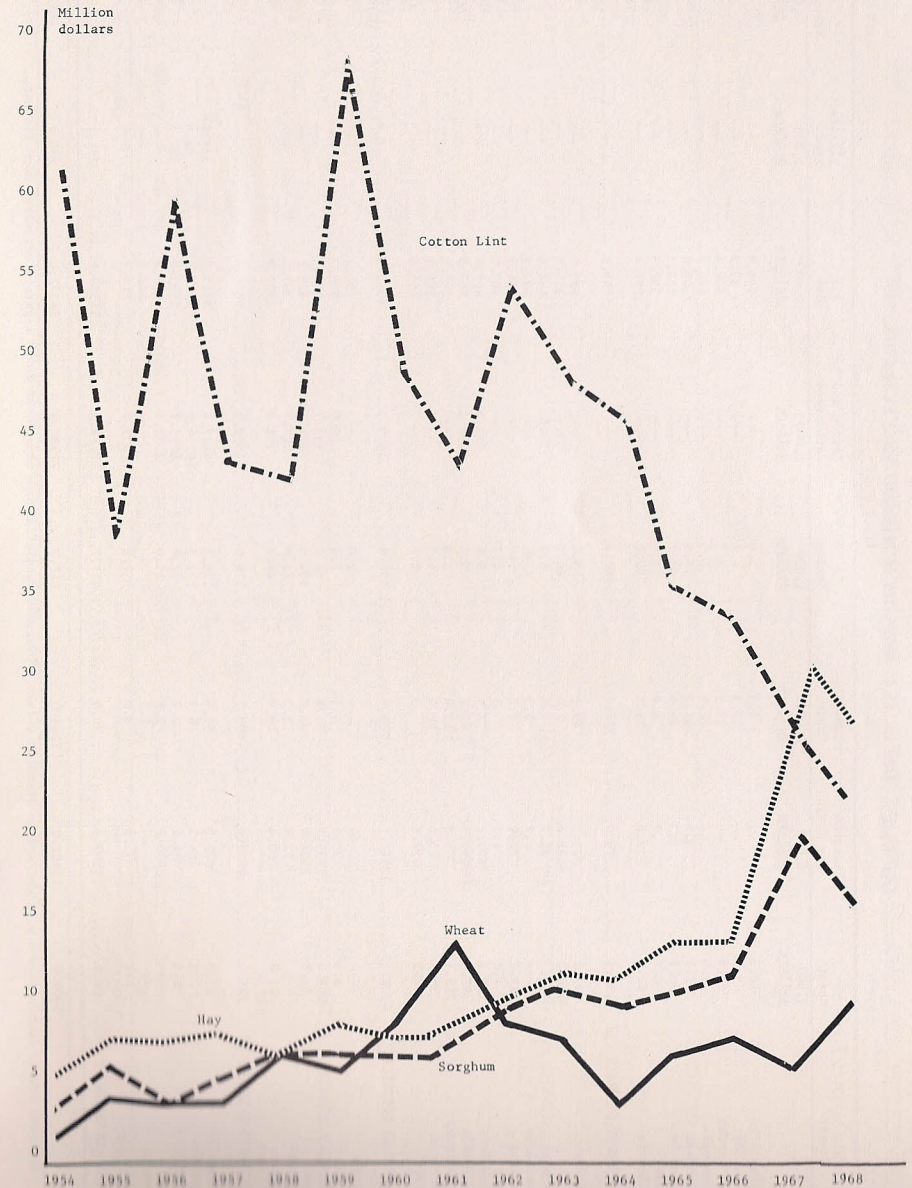
PRINCIPAL CROPS, LIVESTOCK, AND LIVESTOCK PRODUCTS, BY MONTHS, AND YEARS, 1964-1968

Year	Jan.	Feb.	Mar.	Apr.	May	June	July	Aug.	Sept.	Oct.	Nov.	Dec.
WHEAT, All (Dollars per bushel)												
1964	1.98	2.00	1.87	2.00	1.92	1.44	1.39	1.42	1.44	1.46	1.48	1.54
1965	1.48	1.44	1.40	1.36	1.33	1.26	1.30	1.35	1.35	1.35	1.38	1.40
1966	1.45	1.48	1.47	1.47	1.51	1.58	1.78	1.76	1.76	1.60	1.65	1.71
1967	1.63	1.50	1.65	1.50	1.50	1.45	1.41	1.37	1.37	1.40	1.35	1.35
1968 $\frac{1}{2}$	1.38	1.39	1.38	1.26	1.26	1.21	1.22	1.22	1.20	1.28	1.32	1.29
BARLEY (Dollars per bushel)												
1964	1.06	1.10	1.05	1.03	1.00	.98	.93	.97	.99	.99	1.00	1.03
1965	1.08	1.04	1.04	1.02	1.02	1.02	1.02	1.05	1.05	1.03	1.05	1.07
1966	1.07	1.09	1.09	1.10	1.12	1.02	1.02	1.04	1.02	1.05	1.05	1.07
1967	1.09	1.09	1.07	1.07	1.05	1.04	1.01	1.03	1.03	1.04	1.10	1.05
1968 $\frac{1}{2}$	1.10	1.13	1.15	1.14	1.13	.95	.97	.96	.95	.96	.98	1.00
GRAIN SORGHUM (Dollars per CWT)												
1964	1.91	1.88	1.87	1.90	1.89	1.90	1.90	1.91	1.89	1.94	2.00	2.01
1965	1.99	1.96	1.96	1.98	2.01	2.01	1.98	1.96	1.86	1.80	1.78	1.78
1966	1.80	1.81	1.82	1.80	1.82	1.84	1.90	1.95	1.95	1.80	1.80	1.83
1967	1.89	1.90	1.94	1.98	2.00	2.02	2.01	2.00	1.90	1.85	1.75	1.75
1968 $\frac{1}{2}$	1.76	1.85	1.87	1.87	1.80	1.80	1.78	1.75	1.68	1.75	1.78	1.78
UPLAND COTTON (Cents per pound)												
1964	31.5	32.5	33.0	33.0	35.0	34.5	35.0	----	36.0	36.0	36.5	33.6
1965	29.0	31.5	31.0	31.0	31.5	33.0	33.5	----	32.0	32.5	33.0	32.5
1966	29.0	30.0	30.0	29.5	30.0	34.0	33.5	----	----	28.8	29.0	25.9
1967	26.0	24.0	22.0	22.0	22.0	22.0	25.0	----	----	36.0	37.2	34.0
1968 $\frac{1}{2}$	23.5	23.5	25.0	21.0	23.5	24.0	25.0	----	----	29.5	27.5	26.5
ALL HAY (Dollars per ton)												
1964	35.50	36.50	36.50	35.50	26.50	25.20	24.00	24.50	27.20	30.60	31.60	33.40
1965	35.30	33.80	30.50	30.40	25.60	22.70	21.00	20.80	20.40	21.30	24.20	25.60
1966	25.60	25.50	26.00	25.50	24.00	21.00	21.00	22.00	22.00	24.00	26.50	29.00
1967	30.50	33.50	35.50	34.50	28.70	28.70	26.00	26.70	26.70	28.00	31.00	34.20
1968 $\frac{1}{2}$	37.40	38.00	36.00	34.00	27.50	25.00	23.50	23.00	23.00	24.50	27.50	31.50
BEEF CATTLE (Dollars per 100 pounds)												
1964	18.30	19.20	19.90	19.00	16.80	16.50	17.20	16.50	16.80	16.70	15.50	15.70
1965	16.60	17.10	18.90	20.00	20.50	21.00	20.40	20.70	20.30	21.00	19.60	19.00
1966	20.70	23.40	25.00	24.70	23.90	23.10	22.00	23.70	23.30	23.70	22.70	21.40
1967	22.50	22.40	22.20	22.30	23.10	22.50	23.60	24.00	23.60	24.10	22.30	21.70
1968 $\frac{1}{2}$	22.40	22.90	24.00	23.90	23.40	24.20	24.70	24.40	24.50	24.90	24.60	24.20
CALVES (Dollars per 100 pounds)												
1964	24.00	23.80	23.70	22.60	20.30	20.20	20.00	20.00	20.60	20.00	19.60	19.50
1965	19.80	19.70	19.80	21.00	21.00	23.20	22.90	23.00	24.00	23.00	23.30	23.80
1966	24.00	27.00	27.80	27.80	26.80	26.00	25.00	26.00	26.70	26.50	26.50	26.50
1967	26.50	26.00	26.00	26.50	28.00	27.00	27.00	27.00	27.00	26.50	26.00	26.20
1968 $\frac{1}{2}$	26.30	27.00	27.50	27.70	28.00	28.50	28.50	28.00	27.50	28.00	28.50	28.80
HOGS (Dollars per 100 pounds)												
1964	15.00	15.20	14.80	14.50	15.10	15.50	17.00	16.20	16.50	15.60	14.60	14.90
1965	15.60	16.30	16.30	16.80	19.30	22.20	23.70	24.20	22.30	22.80	22.90	27.00
1966	27.70	27.30	24.50	22.10	22.30	23.80	23.90	25.00	22.60	21.10	19.30	19.00
1967	19.00	19.50	18.90	17.30	20.90	21.20	21.20	20.80	19.00	18.30	17.30	16.60
1968 $\frac{1}{2}$	17.20	18.20	18.90	18.50	18.20	18.50	20.40	19.10	19.10	17.70	17.20	17.60
LAMBS (Dollars per 100 pounds)												
1964	15.80	16.50	18.00	18.00	17.50	16.80	16.80	16.80	17.00	17.70	18.00	18.50
1965	19.50	20.40	21.50	21.50	21.00	22.50	21.50	22.00	22.00	22.00	24.00	24.00
1966	26.00	26.50	25.80	25.00	24.50	24.30	24.00	24.50	24.50	24.00	23.50	23.50
1967	23.00	20.00	20.00	20.00	23.70	23.50	23.40	23.00	22.00	22.50	22.70	23.00
1968 $\frac{1}{2}$	22.00	22.50	24.50	25.00	25.00	24.50	24.50	23.50	24.00	24.00	24.50	24.50
MILK, WHOLESALE (Dollars per 100 pounds)												
1964	5.55	5.50	5.05	4.90	4.65	4.50	4.75	4.85	5.20	5.35	5.35	5.45
1965	5.40	5.35	5.00	4.85	4.70	4.55	4.70	4.80	5.10	5.25	5.35	5.45
1966	5.55	5.55	5.50	5.45	5.20	5.10	5.60	5.75	6.15	6.30	6.25	6.10
1967	6.20	6.10	5.65	5.45	5.65	5.50	5.45	5.65	5.90	5.90	6.00	6.05
1968 $\frac{1}{2}$	6.10	5.95	5.85	5.70	5.75	5.60	5.70	5.75	5.95	6.10	6.25	6.40

$\frac{1}{2}$  Subject to revision.

### New Mexico Agricultural Statistics

VALUE OF PRODUCTION FROM SELECTED CROPS NEW MEXICO, 1954-68





CROP VALUES: FARM VALUES OF PRODUCTION OF PRINCIPAL CROPS, BY COUNTIES, 1967

County	Wheat	Sorghum for Grain	Corn for Grain	Barley	Cotton and Cottonseed	All Hay	Alfalfa Seed	Broomcorn
	1,000 dollars	1,000 dollars	1,000 dollars	1,000 dollars	1,000 dollars	1,000 dollars	1,000 dollars	1,000 dollars
Bernalillo	10.3	.7	4.3	2.9	---	754.9	---	---
McKinley	5.5	---	54.3	.7	---	87.9	---	---
Rio Arriba	73.6	---	19.9	6.7	---	480.4	---	---
Sandoval	3.0	.2	42.6	1.5	---	475.8	---	---
San Juan	2.0	3.5	162.3	15.8	---	1509.8	---	---
Santa Fe	30.7	1.3	79.9	33.1	---	295.3	---	---
Taos	8.2	.7	4.6	25.8	---	352.3	---	---
Valencia	62.1	22.6	21.5	21.0	---	1692.2	---	---
NORTHWEST DISTRICT 1/	195.4	29.0	389.4	107.5	---	5648.6	---	---
Colfax	72.1	21.7	49.1	5.4	---	603.9	---	---
Curry	4114.0	8428.8	2.0	80.2	73.1	355.6	---	20.6
De Baca	12.7	81.7	.6	4.8	40.4	432.8	---	---
Guadalupe	---	.7	5.3	---	---	187.9	---	3.0
Harding	19.7	20.0	1.2	---	---	234.3	---	15.5
Mora	4.2	4.7	.1	4.7	---	463.0	---	---
Quay	175.5	677.2	3.9	1.6	212.1	890.6	---	483.8
Roosevelt	397.3	3090.7	41.2	7.6	1288.1	560.0	---	763.2
San Miguel	15.1	4.2	10.8	1.8	---	145.5	---	---
Torrance	35.1	23.6	86.4	26.2	---	384.3	---	---
Union	62.5	557.8	.3	2.6	---	265.4	---	46.9
NORTHEAST DISTRICT 1/	4908.2	12911.1	200.9	134.9	1613.7	4523.3	4.9	1333.0
Catron	---	---	---	2.0	---	51.2	---	---
Grant	4.8	30.2	4.4	2.4	19.9	320.2	---	---
Hidalgo	203.8	1235.5	71.8	44.1	995.7	468.5	---	---
Luna	61.8	1504.8	302.2	102.4	2911.4	320.2	---	---
Sierra	---	11.1	5.3	11.6	407.7	307.5	---	---
Socorro	11.0	50.4	20.0	14.4	261.3	1192.9	---	---
SOUTHWEST DISTRICT 1/	281.4	2832.0	403.7	176.9	4596.0	2660.5	---	---
Chaves	13.2	609.8	47.9	236.3	4447.4	7715.3	115.8	---
Dona Ana	2.8	166.3	6.7	131.3	10116.8	1921.5	32.8	---
Eddy	6.6	81.2	2.7	42.0	5096.7	5533.9	102.5	---
Lea	---	2300.8	3.6	21.0	2782.4	912.6	---	---
Lincoln	---	---	1.1	---	---	241.6	---	---
Otero	1.4	31.8	8.0	7.1	335.0	214.7	---	---
SOUTHEAST DISTRICT 1/	24.0	3189.9	70.0	437.7	22778.3	16539.6	251.1	---
STATE	5409.0	18962.0	1064.0	857.0	28988.0	29372.0	256.0	1333.0

1/ For some crops, county values will not add to district totals. District totals include county for which separate estimates were not made.

CROP VALUES: FARM VALUES OF PRODUCTION OF PRINCIPAL CROPS, BY COUNTIES, 1967

County	Potatoes	Sweet- potatoes	Peanuts	Dry Beans	Early Spring and Early Fall Lettuce	Processing Tomatoes	Onions	Apples	Totals
	1,000 dollars	1,000 dollars	1,000 dollars	1,000 dollars	1,000 dollars	1,000 dollars	1,000 dollars	1,000 dollars	1,000 dollars
Bernalillo	---	---	---	2.2	55.8	---	51.9	---	883.0
McKinley	---	---	---	11.2	---	---	---	---	159.6
Rio Arriba	---	---	---	1.0	---	---	---	1.6	583.2
Sandoval	---	---	---	.3	---	---	---	---	523.4
San Juan	---	---	---	10.9	---	---	---	62.0	1766.3
Santa Fe	212.0	---	---	1.3	---	---	16.4	---	670.0
Taos	---	---	---	1.8	---	---	---	---	393.4
Valencia	38.0	---	---	3.0	261.5	---	79.1	---	2201.0
NORTHWEST DISTRICT 1/	250.0	---	---	31.7	317.3	---	147.4	63.6	7179.9
Colfax	---	---	---	1.9	---	---	---	---	754.1
Curry	---	---	3.0	6.4	---	---	---	---	13083.7
De Baca	---	---	---	1.0	---	---	---	23.2	597.2
Guadalupe	---	---	---	---	---	---	---	---	196.9
Harding	---	---	---	---	---	---	---	---	290.7
Mora	---	---	---	1.2	---	---	---	---	477.9
Quay	---	---	11.0	3.2	---	---	---	---	2458.9
Roosevelt	---	192.0	2207.0	3.6	---	---	70.9	---	8621.6
San Miguel	---	---	---	2.2	---	---	---	---	179.6
Torrance	1012.0	---	---	52.8	333.9	---	27.4	---	1981.7
Union	---	---	---	---	---	---	---	---	935.5
NORTHEAST DISTRICT 1/	1288.0	209.0	2221.0	72.3	333.9	---	98.3	23.2	29875.7
Catron	---	---	---	.3	---	---	---	---	53.5
Grant	---	---	---	---	---	---	---	1.5	383.4
Hidalgo	---	---	---	2.8	---	---	---	---	3022.2
Luna	---	---	---	41.6	---	30.3	74.3	---	5349.0
Sierra	---	---	---	---	---	---	37.8	---	781.0
Socorro	---	---	---	4.3	---	---	50.4	---	1604.7
SOUTHWEST DISTRICT 1/	---	---	---	49.0	502.2	30.3	162.5	1.5	11696.0
Chaves	---	---	---	1.1	---	---	---	144.2	13331.0
Dona Ana	---	---	---	1.5	10502.6	154.8	3141.2	---	26178.3
Eddy	---	---	---	---	---	---	68.0	---	10933.6
Lea	---	---	40.0	4.4	---	---	162.6	---	6227.4
Lincoln	---	---	---	---	---	---	---	77.5	320.2
Otero	---	---	---	---	---	59.9	---	---	657.9
SOUTHEAST DISTRICT 1/	---	---	40.0	7.0	10502.6	214.7	3371.8	221.7	57648.4
STATE	1538.0	209.0	2261.0	160.0	11656.0	245.0	3780.0	310.0	106400.0

1/ For some crops, county values will not add to district totals. District totals include counties for which separate estimates were not made.



CROP VALUES: FARM VALUES OF PRODUCTION OF PRINCIPAL CROPS, BY COUNTIES, 1968 1/

County	Wheat	Sorghum for Grain	Corn for Grain	Barley	Cotton and Cottonseed	All Hay	Alfalfa Seed	Broomcorn
	1,000 dollars	1,000 dollars	1,000 dollars	1,000 dollars	1,000 dollars	1,000 dollars	1,000 dollars	1,000 dollars
Bernalillo	17.2	3.0	3.5	2.9	---	711.3	---	---
McKinley	6.5	---	31.8	---	---	63.6	---	---
Rio Arriba	112.4	---	24.3	5.1	---	438.3	---	---
Sandoval	11.7	1.5	44.3	1.2	---	490.2	---	---
San Juan	5.0	3.6	183.1	7.0	---	1337.9	---	---
Santa Fe	48.9	13.3	38.5	27.2	---	326.0	---	---
Taos	14.7	---	4.2	26.2	---	337.8	---	---
Valencia	56.3	---	29.0	26.2	---	1542.3	---	---
NORTHWEST DISTRICT 2/	272.7	21.4	358.7	95.8	---	5247.4	---	---
Colfax	65.3	17.7	35.4	7.1	---	554.4	---	---
Curry	5788.6	5738.0	3.5	186.3	103.3	535.3	---	32.0
De Baca	13.9	49.1	7.3	7.4	34.9	559.7	---	---
Guadalupe	1.8	2.5	5.4	1.2	---	167.0	---	---
Harding	86.2	26.4	1.4	---	1.0	223.9	---	39.4
Mora	9.6	4.7	4.2	6.1	---	445.2	---	---
Quay	1387.3	628.3	8.8	4.7	249.4	752.4	---	455.7
Roosevelt	1140.7	2305.7	52.0	22.9	1339.7	491.6	---	1120.5
San Miguel	16.5	4.8	10.8	1.2	---	137.8	---	---
Torrance	106.8	23.6	95.8	34.4	---	398.8	---	---
Union	170.1	826.6	235.9	21.8	---	279.8	---	12.4
NORTHEAST DISTRICT 2/	8786.8	9627.4	460.5	293.1	1728.3	4545.9	4.1	1660.0
Catron	---	---	4.0	1.2	---	53.8	---	---
Grant	20.3	29.7	9.3	7.8	3.3	286.2	---	---
Hidalgo	103.5	1081.1	74.3	40.7	659.0	384.7	---	---
Luna	5.3	1514.8	376.7	104.8	2627.2	289.4	---	---
Sierra	---	7.3	9.4	11.6	255.6	268.2	---	---
Socorro	7.2	52.0	24.3	12.6	142.5	1034.4	---	---
SOUTHWEST DISTRICT 2/	136.3	2684.9	498.0	178.7	3687.6	2316.7	9.2	---
Chaves	12.7	525.9	28.3	165.9	4777.2	6802.0	146.1	---
Dona Ana	2.5	168.3	10.1	129.1	9218.3	1874.1	56.4	---
Eddy	7.2	114.5	5.4	47.5	4495.0	5565.0	126.2	---
Lea	6.0	2287.0	6.8	23.3	1995.0	1004.9	---	---
Lincoln	---	---	3.8	---	---	198.2	---	---
Otero	1.8	38.6	5.4	13.6	243.6	243.8	---	---
SOUTHEAST DISTRICT 2/	30.2	3134.3	59.8	379.4	20729.1	15688.0	328.7	---
STATE	9226.0	15468.0	1377.0	947.0	26145.0	27798.0	342.0	1660.0

1/ Preliminary. 2/ For some crops, county values will not add to district totals. District totals include county for which separate estimates were not made.

CROP VALUES: FARM VALUES OF PRODUCTION OF PRINCIPAL CROPS, BY COUNTIES, 1968 1/

County	Potatoes	Sweet-potatoes	Peanuts	Dry Beans	Early Spring and Early Fall Lettuce	Processing Tomatoes	Onions	Apples	Totals
	1,000 dollars	1,000 dollars	1,000 dollars	1,000 dollars	1,000 dollars	1,000 dollars	1,000 dollars	1,000 dollars	1,000 dollars
Bernalillo	---	---	---	1.5	29.0	---	40.0	36.6	845.0
McKinley	---	---	---	7.0	---	---	---	---	108.9
Rio Arriba	---	---	---	.6	---	---	---	618.3	1199.0
Sandoval	---	---	---	.3	---	---	---	83.8	633.0
San Juan	28.1	---	---	9.8	---	---	---	387.7	1962.2
Santa Fe	254.5	---	---	.9	---	---	21.6	157.2	888.1
Taos	---	---	---	2.8	---	---	---	---	385.7
Valencia	91.2	---	---	.7	214.0	---	312.8	52.4	2324.9
NORTHWEST DISTRICT 2/	373.8	---	---	23.6	243.0	---	374.4	1336.0	8346.8
Colfax	---	---	---	1.0	---	---	---	---	680.9
Curry	232.3	---	7.4	4.5	---	---	---	---	12631.2
De Baca	---	---	---	.8	---	---	---	---	673.1
Guadalupe	---	---	---	.8	---	---	---	---	178.7
Harding	---	---	---	1.3	---	---	---	---	379.6
Mora	---	---	---	.7	---	---	---	---	470.5
Quay	---	---	12.4	2.5	---	---	---	---	3501.5
Roosevelt	---	236.0	2429.6	11.3	---	---	127.6	---	9277.6
San Miguel	---	---	---	1.8	---	---	---	---	172.9
Torrance	1208.7	---	---	20.4	541.0	---	---	---	2429.5
Union	---	---	---	---	---	---	---	---	1546.6
Other Counties	43.2	---	---	---	---	---	---	---	43.2
NORTHEAST DISTRICT 2/	1484.2	236.0	2449.4	45.1	541.0	---	127.6	21.0	32010.4
Catron	---	---	---	.2	---	---	---	---	59.2
Grant	---	---	---	---	---	---	---	---	356.6
Hidalgo	---	---	---	17.5	---	---	---	---	2360.8
Luna	---	---	---	36.7	---	---	100.8	---	5055.7
Sierra	---	---	---	---	---	---	92.8	---	644.9
Socorro	---	---	---	3.7	---	---	58.0	---	1334.7
SOUTHWEST DISTRICT 2/	---	---	---	58.1	728.0	---	251.6	63.0	10612.1
Chaves	---	---	---	7.4	---	---	---	---	12465.5
Dona Ana	---	---	---	1.3	7480.0	---	3782.0	---	22722.1
Eddy	---	---	---	---	---	---	104.4	---	10465.2
Lea	---	---	27.6	11.5	---	---	280.0	---	5642.1
Lincoln	---	---	---	---	---	---	---	---	202.0
Otero	---	---	---	---	---	---	---	---	546.8
SOUTHEAST DISTRICT 2/	---	19.0	27.6	20.2	7480.0	428.0	4166.4	802.0	53292.7
STATE	1858.0	255.0	2477.0	147.0	8992.0	428.0	4920.0	2222.0	104262.0

1/ Preliminary. 2/ For some crops, County Values will not add to district totals. District totals include counties for which separate estimates were not made.



LIVESTOCK INVENTORY VALUES: FARM INVENTORY VALUE OF SPECIFIED SPECIES OF LIVESTOCK BY COUNTIES, JANUARY 1, 1968

County	All cattle <sup>1/</sup>	Milk cows <sup>2/</sup>	Hogs	All sheep	Chickens	Total
---1,000 dollars---						
Bernalillo	3128.0	817.0	21.7	137.8	156.5	3444.0
McKinley	2448.0	21.5	12.1	2327.9	4.7	4792.7
Rio Arriba	3944.0	86.0	7.2	744.9	10.0	4706.1
Sandoval	1904.0	43.0	4.8	178.8	6.3	2093.9
San Juan	2584.0	279.5	28.9	1452.6	11.6	4077.1
Santa Fe	3128.0	86.0	7.2	18.6	8.1	3161.9
Taos	1496.0	43.0	12.1	409.7	10.0	1927.8
Valencia	6528.0	946.0	24.1	558.7	13.4	7124.2
NORTHWEST DISTRICT	25160.0	2322.0	118.1	5829.0	220.6	31327.7
Colfax	7888.0	86.0	10.8	81.9	6.7	7987.4
Curry	9248.0	150.5	106.0	55.9	31.1	9441.0
De Baca	4080.0	86.0	24.1	447.0	5.1	4556.2
Guadalupe	4080.0	43.0	2.9	856.7	5.0	4944.6
Harding	5032.0	43.0	2.4	18.6	3.8	5056.8
Mora	2856.0	129.0	3.6	232.8	6.8	3099.2
Quay	10064.0	236.5	91.6	63.3	15.4	10234.3
Roosevelt	9928.0	1978.0	159.0	81.9	28.6	10197.5
San Miguel	7208.0	86.0	4.8	68.9	21.4	7303.1
Torrance	3672.0	150.5	15.2	540.1	5.8	4233.1
Union	12104.0	107.5	22.9	29.8	10.0	12166.7
NORTHEAST DISTRICT	76160.0	3096.0	443.3	2476.9	139.7	79219.9
Catron	6256.0	64.5	2.4		5.3	6263.7
Grant	7072.0	86.0	10.8		4.8	7087.6
Hidalgo	5712.0	64.5	72.3		4.4	5788.7
Luna	4896.0	43.0	26.5		5.4	4927.9
Sierra	3672.0	602.0	36.1		4.3	3712.4
Socorro	6800.0	43.0	6.0		4.2	6810.2
SOUTHWEST DISTRICT	34408.0	903.0	154.1	<sup>3/</sup> 372.5	28.4	<sup>3/</sup> 34963.0
Chaves	18224.0	301.0	86.8	2905.2	27.8	21243.8
Dona Ana	3808.0	795.5	57.8	54.0	474.7	4394.5
Eddy	7344.0	494.5	22.9	1016.8	53.1	8436.8
Lea	8840.0	494.5	100.1	651.8	28.0	9619.9
Lincoln	4624.0	86.0	6.0	2476.9	4.2	7111.1
Otero	4488.0	107.5	22.9	474.9	4.5	4990.3
SOUTHEAST DISTRICT	47328.0	2279.0	296.5	7579.6	592.3	55796.4
STATE	183056.0	8600.0	1012.0	16258.0	981.0	201307.0

<sup>1/</sup> Includes milk cows.

<sup>2/</sup> Cows and heifers two years old and over kept for milk.

<sup>3/</sup> District total includes counties for which separate estimates were not made.

LIVESTOCK INVENTORY VALUES: FARM INVENTORY VALUE OF SPECIFIED SPECIES OF LIVESTOCK BY COUNTIES, JANUARY 1, 1969 <sup>1/</sup>

County	All cattle <sup>2/</sup>	Milk cows <sup>3/</sup>	Hogs	All sheep	Chickens	Total
---1,000 dollars---						
Bernalillo	3190.0	774.0	16.2	144.0	138.2	3488.4
McKinley	2610.0	21.5	10.4	2545.0	3.8	5169.2
Rio Arriba	3915.0	86.0	5.8	800.0	6.7	4727.5
Sandoval	2030.0	43.0	4.6	195.0	4.3	2233.9
San Juan	2900.0	258.0	13.9	1580.0	8.6	4502.5
Santa Fe	3190.0	86.0	8.1	16.0	6.9	3221.0
Taos	1595.0	43.0	13.9	421.0	6.7	2036.6
Valencia	6670.0	924.5	19.6	579.0	8.9	7277.5
NORTHWEST DISTRICT	26100.0	2236.0	92.5	6280.0	184.1	32656.6
Colfax	8410.0	64.5	11.6	82.0	5.5	8509.1
Curry	9860.0	129.0	78.5	49.0	13.9	10001.4
De Baca	4495.0	64.5	25.5	462.0	3.8	4986.3
Guadalupe	4350.0	43.0	4.6	903.0	3.8	5261.4
Harding	5075.0	43.0	2.3	18.0	2.4	5097.7
Mora	3335.0	107.5	2.3	246.0	4.8	3588.1
Quay	10440.0	215.0	90.1	70.0	10.6	10610.7
Roosevelt	10585.0	1913.5	168.6	82.0	12.7	10848.3
San Miguel	7250.0	86.0	9.2	72.0	15.6	7346.8
Torrance	3625.0	129.0	20.8	571.0	4.2	4221.0
Union	12325.0	86.0	25.5	31.0	7.2	12388.7
NORTHEAST DISTRICT	79750.0	2881.0	439.0	2586.0	84.5	82859.5
Catron	6380.0	64.5	3.5		4.0	6387.5
Grant	7250.0	86.0	10.4		3.8	7264.2
Hidalgo	5800.0	64.5	101.6		2.3	5903.9
Luna	5220.0	43.0	31.2		3.8	5255.0
Sierra	4060.0	580.5	55.4		5.0	4120.4
Socorro	7250.0	43.0	5.8		3.0	7258.8
SOUTHWEST DISTRICT	35960.0	881.5	207.9	<sup>4/</sup> 370.0	21.9	<sup>4/</sup> 36559.8
Chaves	22765.0	516.0	164.0	3058.0	17.8	26004.8
Dona Ana	4060.0	838.5	55.4	52.0	536.6	4704.0
Eddy	8120.0	387.0	34.7	1088.0	50.9	9293.6
Lea	8990.0	451.5	79.7	688.0	22.0	9779.7
Lincoln	4785.0	86.0	8.1	2647.0	2.9	7443.0
Otero	4640.0	107.5	27.7	472.0	3.3	5143.0
SOUTHEAST DISTRICT	53360.0	2386.5	369.6	8005.0	633.5	62368.1
STATE	195170.0	8385.0	1109.0	17241.0	924.0	214444.0

<sup>1/</sup> Preliminary

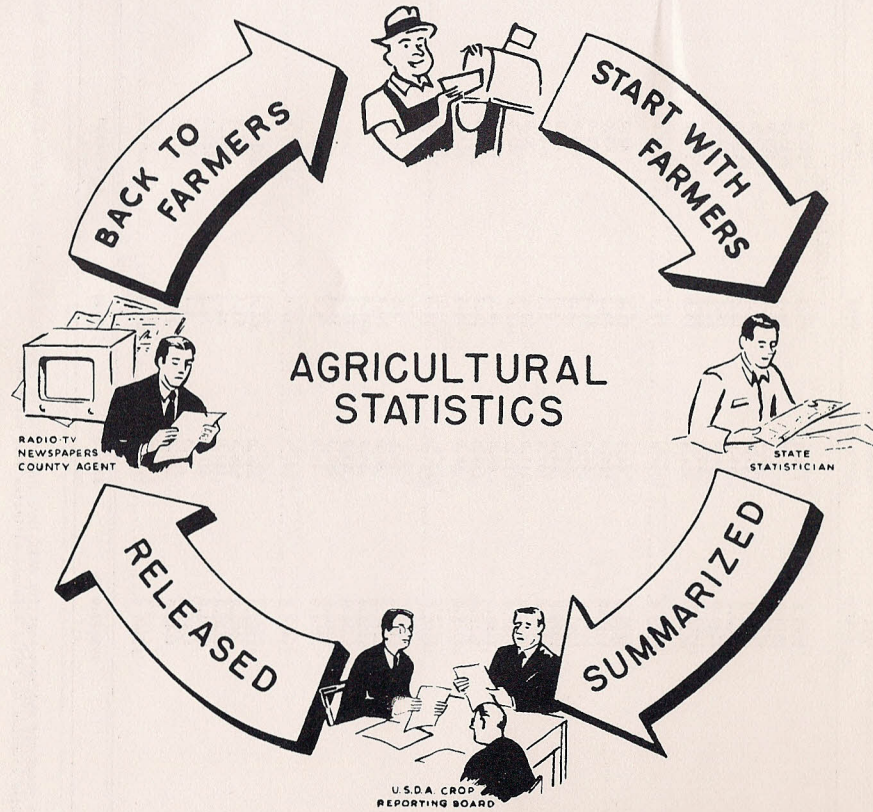
<sup>2/</sup> Includes milk cows.

<sup>3/</sup> Cows and heifers two years old and over kept for milk.

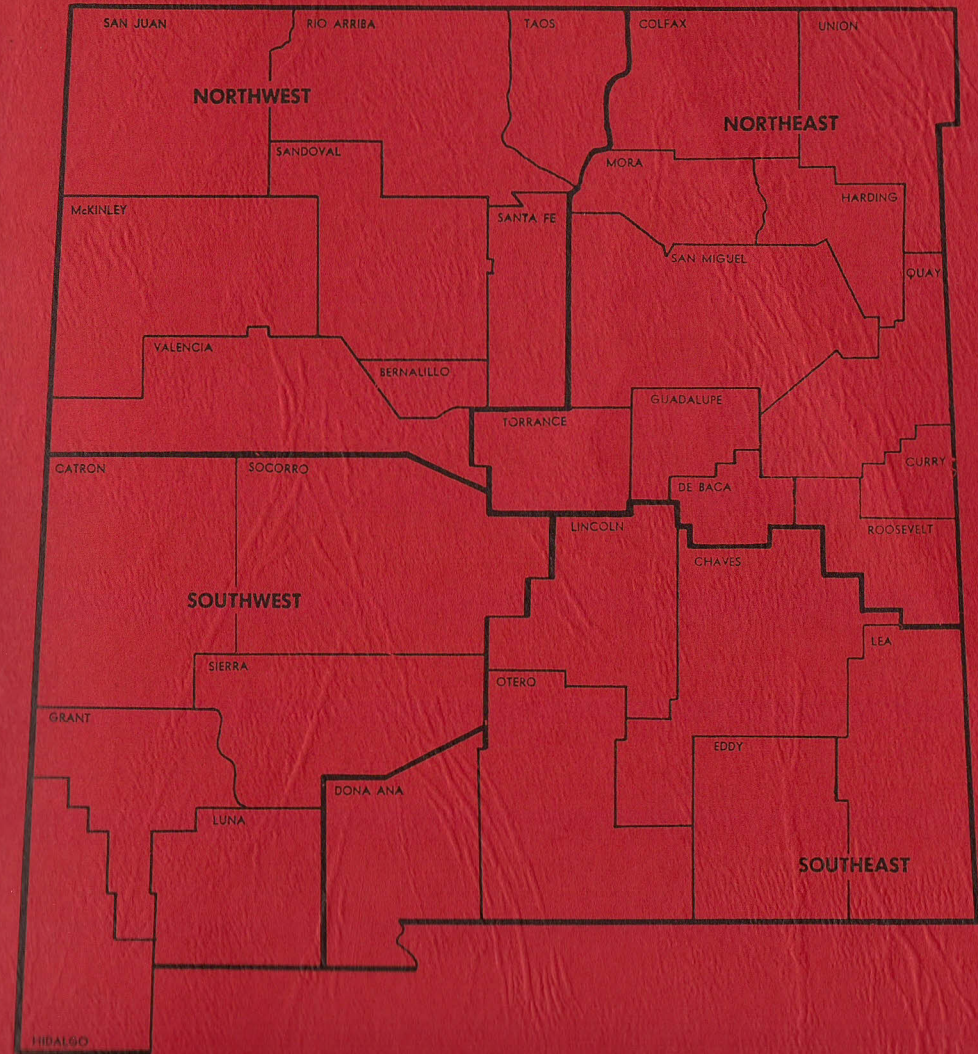
<sup>4/</sup> District total includes counties for which separate estimates were not made.



# Agriculture 1968



## NEW MEXICO CROP REPORTING DISTRICTS



**CROP AND LIVESTOCK REPORTING SERVICE**