

**NEW MEXICO
DEPARTMENT OF AGRICULTURE**

New Mexico State University
Las Cruces, New Mexico 88001

DALLAS RIERSON, Director

COOPERATING WITH
UNITED STATES DEPARTMENT OF AGRICULTURE
Statistical Reporting Service
Field Operation Division

COMPILED BY
NEW MEXICO CROP AND LIVESTOCK
REPORTING SERVICE

Joe D. Herman—Agricultural Statistician in Charge
Larry Losleben—Agricultural Statistician
Dole Hopkins—Agricultural Statistician
Robert W. Young, Agricultural Statistician
Fred Borum—Agricultural Statistician
Gustav J. Meier Jr.—Agricultural Statistician
Hazel M. Hobbs—Supervisory Statistical Assistant
Statistical Clerical Staff

1480 North Main
P. O. Drawer 580
Las Cruces, New Mexico 88001

New Mexico Agricultural Statistics

TABLE OF CONTENTS

	Pages
FORWARD	2
CLIMATE OF NEW MEXICO	3
PLANTING AND HARVESTING DATES	4
CROP SUMMARY	5
PRINCIPAL CROPS	6
FARM INCOME TABLES	7
LIVESTOCK SUMMARY	32
NEW MEXICO OUTSHIPMENTS AND INSHIPMENTS OF CATTLE	34-35
NEW MEXICO INDEX OF PRICES RECEIVED	48-51
PRICES RECEIVED	52
GRAPHS	36, 47 53, 60

STATE TABLES

STOCKS AND COTTONSEED	8
LIVESTOCK	40-45

COUNTY ESTIMATES

COTTON	10-13
GRAINS	
Barley	14-15
Corn	16-17
Sorghum	18-19
Wheat	20-21
MISCELLANEOUS CROPS	
Hays	22-23
Alfalfa Seed	23
Broomcorn	24
Potatoes	25
Sweetpotatoes	25
Peanuts	25
Dry Beans	26-27
VEGETABLES	
Vegetable Graph	29
Lettuce	30
Tomatoes for Processing	30
Onions	31
FRUITS	
Apples	31
LIVESTOCK	
Cattle	38-39
Milk Cows	38-39
Hogs	38-39
Sheep	38-39
Chickens	38-39
Cattle and Sheep on Feed	46
VALUE OF CROP PRODUCTION AND LIVESTOCK INVENTORY VALUE	
Individual and Total Value of Principal Crops	54-57
Livestock Inventory Values by Species	58-59

New Mexico Agricultural Statistics



New Mexico Department of Agriculture

OFFICE OF THE DIRECTOR
NEW MEXICO STATE UNIVERSITY
P. O. BOX 3189
LAS CRUCES, NEW MEXICO 88001
TELEPHONE (505) 646-3007

FOREWARD

New Mexico agriculture is faced with keeping in step with new requirements and needs of the consumer. In addition, allied industries must keep pace with changes in agriculture to meet its needs in order to adequately provide food and fiber to the people of this country and the world.

To assist all concerned, we take pride in presenting Volume VI, Supplement 1 of New Mexico Agricultural Statistics bringing up to date agricultural production by counties and production values of the major crops of New Mexico.

This work is a cooperative program of the New Mexico Department of Agriculture and the Statistical Reporting Service of the United States Department of Agriculture.

Dallas Rierson
Dallas Rierson
Director

New Mexico Agricultural Statistics

CLIMATE OF NEW MEXICO

AVERAGE FIRST FALL AND LAST SPRING DATE OF 32°, DAYS BETWEEN DATES, RECORD AVERAGE, PRECIPITATION, 1966-67

County and Station	Freeze data years of record	Average first date of 32 degrees	Average last spring date of 32 degrees	Average number of days between dates	Precipitation (in inches)		
					Average 1931-1960 or * for period of record through 1967	1966	1967
Bernalillo Albuquerque	76	Oct. 27	Apr. 17	193	8.13	6.81	8.04
Sandoval Jemez Springs	56	Oct. 21	May 1	173	17.68	11.33	15.72
San Juan Shiprock	37	Oct. 14	May 1	166	* 6.77	7.64	5.26
Aztec Ruins Natl. Monument	55	Oct. 10	May 12	151	9.82	7.76	6.55
Santa Fe Santa Fe	91	Oct. 15	May 6	162	13.76	12.30	15.05
Taos Taos	66	Oct. 3	May 16	140	12.08	12.62	13.44
Valencia Los Lunas	67	Oct. 18	Apr. 23	178	* 7.89	5.50	8.93
San Fidel	41	Oct. 13	May 8	158	* 9.60	7.91	10.16
Colfax Raton	24	Sept. 30	May 10	143	14.75	12.92	14.62
Springer	71	Oct. 6	May 8	151	15.59	15.39	19.53
Curry Clovis	54	Oct. 28	Apr. 15	196	17.48	12.71	15.33
Melrose	25	Oct. 24	Apr. 19	188	15.13	14.46	13.94
De Baca Ft. Sumner	55	Oct. 23	Apr. 18	188	13.74	13.53	12.06
Alamogordo Dam	29	Oct. 29	Apr. 16	196	*12.28	10.03	9.67
Guadalupe Santa Rosa	57	Oct. 25	Apr. 17	191	13.92	13.78	9.69
Quay Tucumcari	62	Oct. 27	Apr. 15	195	15.07	8.77	12.99
Obar	40	Oct. 21	Apr. 19	185	15.80	13.52	14.40
San Jon	60	Oct. 25	Apr. 23	185	15.18	12.19	15.07
Roosevelt Portales	55	Oct. 19	Apr. 23	180	16.94	16.00	13.53
Elida	27	Oct. 27	Apr. 17	193	15.09	13.47	12.25
San Miguel Las Vegas Airport	27	Oct. 10	May 12	151	*15.13	12.92	15.24
Bell Ranch	63	Oct. 22	Apr. 21	184	14.52	7.70	13.50
Torrance Estancia	47	Oct. 1	May 20	134	*11.88	7.71	14.03
Union Clayton	61	Oct. 20	Apr. 27	176	14.51	15.43	13.84
Des Moines	51	Oct. 4	May 14	143	17.91	15.11	21.85
Catron Quemado	37	Sept. 24	June 8	108	10.40	8.48	12.38
Grant Ft. Bayard	69	Oct. 24	Apr. 28	179	14.41	17.13	15.09
Hidalgo Lordsburg	40	Nov. 5	Apr. 5	214	10.10	13.63	8.91
Animas	39	Oct. 28	Apr. 24	187	9.99	7.38	14.67
Luna Deming	71	Nov. 1	Apr. 5	210	8.84	6.66	8.86
Hachita	49	Nov. 4	Apr. 13	205	9.54	9.88	8.14
Sierra Caballo Dam	31	Nov. 4	Apr. 6	212	* 8.43	7.19	10.24
Winston	21	Oct. 9	May 13	149	12.14	13.46	16.24
Hillsboro	25	Oct. 28	Apr. 17	194	10.98	11.03	16.62
Socorro Socorro	71	Oct. 24	Apr. 11	196	8.75	6.01	7.98
Augustine	36	Sept. 26	May 30	122	10.51	10.50	9.51
Chaves Roswell	74	Oct. 30	Apr. 8	205	11.62	9.68	11.06
Elk	56	Oct. 16	Apr. 30	169	15.84	18.19	11.45
Dona Ana State University	76	Oct. 28	Apr. 9	202	8.01	9.84	8.42
Hatch	54	Oct. 24	Apr. 11	196	8.94	9.84	11.76
Eddy Carlsbad	71	Nov. 5	Apr. 4	217	12.45	13.83	6.97
Artesia	59	Oct. 29	Apr. 12	200	11.33	11.46	5.41
Lea Hobbs	48	Nov. 5	Apr. 8	211	*14.77	15.24	7.45
Jal	26	Nov. 2	Apr. 2	214	*11.38	11.03	8.51
Lincoln Ft. Stanton	69	Oct. 7	May 7	153	*15.27	10.82	11.28
Corona	54	Oct. 15	May 6	162	15.87	16.52	13.85
Otero Alamogordo	49	Nov. 5	Apr. 6	213	9.80	9.76	10.85
Clouderof t	65	Sept. 29	May 19	133	25.74	24.53	26.03

New Mexico Agricultural Statistics

USUAL PLANTING AND HARVESTING DATES

Crop	1967 harvested acreage (1,000 acres)	Usual planting dates	Usual harvesting dates			Principal Counties
			Begins	Most Active	Ends	
BARLEY						
Fall sown		Sept. 1-Nov. 1	June 10	June 15-July 10	July 20	Chaves-Dona Ana-Eddy
Spring sown	16	Feb. 15-Apr. 1	June 20	June 25-July 15	Aug. 1	
BEANS, dry	4	May 15-June 15	Sept. 1	Sept. 10-Oct. 1	Oct. 15	McKinley-Torrance-Luna
BROOMCORN	25	May 20-July 1	Aug. 20	Sept. 10-Oct. 10	Nov. 1	Quay-Roosevelt
CORN, all	44	Apr. 15-June 1	Sept. 15	Oct. 10-Nov. 1	Dec. 1	San Juan-Santa Fe-Torrance
COTTON	122	Apr. 1-May 15	Sept. 25	Oct. 15-Nov. 20	Jan. 1	Chaves-Dona Ana-Eddy
HAY, alfalfa	193		May 1		Oct. 20	Chaves-Dona Ana-Eddy
PEANUTS for nuts	8.0	May 10-June 1	Oct. 1	Oct. 10-Oct. 25	Nov. 10	Roosevelt
SORGHUM						
Grain	314	May 10-July 10	Oct. 1	Oct. 10-Nov. 10	Dec. 1	Curry-Roosevelt-Lea
Silage	11	May 10-June 20	Aug. 15	Sept. 5-Oct. 1	Oct. 20	
SUGAR BEETS	3.9	Feb. 1-Mar. 15	Nov. 1	Nov. 10-Dec. 1	Dec. 15	Curry-Torrance-Santa Fe
WHEAT, winter	141	Sept. 1-Oct. 20	June 5	June 15-July 5	July 20	Curry-Quay-Roosevelt
SEED CROPS:						
ALFALFA	2.6		July 25	Aug. 15-Sept. 15	Oct. 1	Chaves-Dona Ana-Eddy
VEGETABLES:						
LETTUCE						
Early spring	3.1	Jan. 1-Jan. 15	Apr. 25	May 1-May 31	June 5	Dona Ana
Early fall	4.6	Aug. 1-Aug. 15	Oct. 5	Oct. 10-Oct. 31	Nov. 10	
ONIONS						
Grano	4.7	Oct. 1-Oct. 15	May 25	June 1-Aug. 31	Oct. 15	Lea-Dona Ana-Luna-Hidalgo
Sweet Spanish		Feb. 1-Feb. 15				
TOMATOES, all	.6	Apr. 15-May 20	Sept. 1	Sept. 1-Oct. 31	Nov. 1	Luna-Otero-Dona Ana
POTATOES	2.6	May 1-June 15	July 25	Aug. 15-Oct. 31	Nov. 15	Santa Fe-Torrance
APPLES						
North	...		Aug. 15	Sept. 5-Oct. 20	Oct. 30	San Juan-Rio Arriba-Bernalillo-Sandoval-Santa Fe
South	...		Aug. 15	Aug. 30-Oct. 15	Oct. 30	Lincoln-Otero-De Baca

New Mexico Agricultural Statistics

Annual Crop Summary

Throughout the year 1967, extreme weather conditions prevailed which were beneficial to some farmers and ranchers and disastrous to others. Unseasonable freezes, drought, insect infestations, flood and hail damage were several of the unfavorable weather conditions affecting production in 1967. Crops such as wheat, barley, cotton, apples and pecans were particularly affected by these conditions and showed substantial decreases in yield and production. Potatoes, sweetpotatoes, peanuts, alfalfa seed and dry beans also decreased in production from 1966, but smaller harvested acreages accounted for much of these decreases. In contrast, sorghum grain, corn, all hays and some vegetable crops had rather large increases in production as a result of both increased acreage and favorable weather conditions during the late summer growing season.

Fall-seeded wheat and barley provided excellent pasture for livestock through December of 1966. However, after the first of the year, an extreme drought gripped New Mexico and was not broken until early June. From January to the last of May, only 40 percent of normal precipitation was received on the northeastern plains where the majority of wheat is produced. Average rainfall in the rest of the State was as much as 20 percent below normal. This spring drought coupled with the late freeze in May cut production of both the wheat and barley crops. Wheat production at 3,948,000 bushels fell 16 percent under the 4,704,000 bushels produced in 1966 even though acreage planted had increased 22 percent. Barley production decreased 3 percent and is estimated at 816,000 bushels while acreage increased 14 percent.

Excellent rains in early June provided sufficient soil moisture for plantings of sorghum grain and the other late crops. As a result of the poor wheat crop, many farmers turned heavily to sorghum grain and plantings were up 30 percent. Adequate moisture was received throughout the summer months and frost held off until late October which benefited production. Sorghum grain production at 19,154,000 bushels was up 20 percent over last year's estimate of 15,939,000 bushels. Corn production also increased from 546,000 bushels produced in 1966 to 720,000 bushels this year.

The cotton crop had several setbacks in 1967. Some of the earlier-planted cotton was frozen out and had to be replanted. Hail storms and floods destroyed or severely setback several hundred acres of cotton; also heavy infestations of pink bollworm and other insects took their toll on the 1967 cotton crop. Cotton production dropped off to 160,000 bales--the lowest production figure since 1946 and 12 percent under last year's estimate. Acreage for harvest was down 10 percent this year due to more layout.

All hay production again this year was the highest on record. Acreage was up 6,000 acres and excellent conditions prevailed in all areas to account for this increased production. All hay production at 963,000 tons was up 3 percent over last year. Alfalfa hay represents 90 percent of the all hay figure.

Both broomcorn and peanut production were down mainly due to a decrease in harvested acreage. Also some dryland broomcorn was abandoned due to short moisture conditions and virus in isolated areas. Broomcorn production dropped from 4,500 tons in 1966 to 3,100 tons this year. Peanut production was off 7 percent from last year and is currently estimated at 15,920,000 pounds.

The late freeze in early May virtually wiped out the apple and pecan crop in New Mexico. Apple production fell from 43,000,000 pounds to 4,300,000 pounds and pecan production decreased from 8,300,000 pounds to 3,000,000 pounds. Lettuce and onions fared much better than did apples and pecans. Lettuce acreage increased from 4,900 acres in 1966 to 7,700 acres in 1967, and production jumped from 1,137,000 cwt. in 1966 to 1,956,000 cwt. this year. Onion production increased from 1,000,000 cwt. to 1,457,000 cwt., a 46 percent increase. This increase in vegetable acreage is part of the general trend toward more intensive cropping especially in the Mesilla and Hatch Valleys.

PRINCIPAL CROPS: ACREAGE, YIELD, PRODUCTION, PRICE, VALUE, AVERAGE 1961-65, ANNUAL 1966, AND 1967

Commodity	Unit	Acreage harvested			Yield per acre			Production			Season Average Price		Value of Production	
		Average 1961-65	1966	1967 <u>1/</u>	Average 1961-65	1966	1967 <u>1/</u>	Average 1961-65	1966	1967 <u>1/</u>	1966	1967 <u>1/</u>	1966	1967 <u>1/</u>
		1,000 acres	1,000 acres	1,000 acres	See Unit Column			1,000	1,000	1,000	Dollars	Dollars	1,000 dollars	1,000 dollars
GENERAL CROPS														
Corn for grain	Bu.	14	13	16	37.2	42.0	45.0	514	546	720	1.51	1.34	824	965
Corn for silage	Tons	15	24	27	14.9	17.0	17.0	221	408	459	--	--	--	--
Corn for forage	Tons	--	3	1	--	--	--	--	--	--	--	--	--	--
All Wheat	Bu.	207	147	141	22.3	32.0	28.0	4752	4704	3948	1.68	1.38	7903	5448
Oats	Bu.	8	5	2/	37.4	42.0	2/	289	210	2/	.88	2/	185	2/
Barley	Bu.	21	14	16	48.2	60.0	51.0	1029	840	816	1.04	1.05	874	859
Sorghum Grain	Bu.	209	253	314	48.6	63.0	61.0	10217	15939	19154	1.04	1.00	16577	19154
Sorghum silage	Tons	15	12	11	12.3	11.0	13.0	186	132	143	--	--	--	--
Sorghum forage	Tons	51	52	86	1.98	2.40	1.90	101	125	163	17.50	20.50	2188	3342
Broomcorn	Tons	35	30	25	3/ 320	3/ 300	3/ 250	5.7	4.5	3.1	350.00	430.00	1575	1333
Cotton Lint	Lbs.	189	134	120	673	648	640	4/ 266	4/ 181	4/ 160	.2739	.3090	24745	24299
Cottonseed	Tons	--	--	--	--	--	--	110	75	66	70.50	59.60	5288	3993
Beans, dry	Lbs.	8	7	4	652	580	500	5/ 50	5/ 41	5/ 20	7.50	8.00	308	160
Potatoes	Cwt.	2.6	2.3	2.6	167	185	200	433	426	520	3.26	2.48	1389	1290
Sweetpotatoes	Cwt.	1.2	.6	.4	85	95	90	104	57	36	4.19	6.90	239	248
Peanuts	Lbs.	8.0	8.2	8.0	2030	2080	1990	15192	17056	15920	.123	.142	2098	2261
SEED CROPS														
Alfalfa seed	Lbs.	--	3.6	2.6	--	145	195	--	551	507	38.50	50.50	212	256
HAY CROPS														
All hay	Tons	240	264	270	3.27	3.53	3.57	783	933	963	25.00	30.50	23325	29372
Alfalfa hay	Tons	170	191	193	4.16	4.40	4.50	702	840	868	--	--	--	--
Clow-Tim Hay	Tons	16	17	19	1.31	1.60	1.70	22	27	32	--	--	--	--
Grain hay	Tons	16	17	16	1.31	1.40	1.25	21	24	20	--	--	--	--
Other tame hay	Tons	17	16	19	1.10	1.40	1.35	19	22	26	--	--	--	--
Wild hay	Tons	21	23	23	.90	.85	.75	19	20	17	--	--	--	--
FRUITS AND NUTS														
Pecans, improved	Lbs.	--	--	--	--	--	--	6270	8300	3000	.395	.470	3278	1410
Apples	Lbs.	--	--	--	--	--	--	27.7	6/ 43.0	4.3	.0465	.0710	1683	305
COMMERCIAL VEGETABLES														
Lettuce, early spring	Cwt.	.6	2.2	3.1	244	210	260	157	2/ 462	806	2.85	6.90	935	5561
Lettuce, early fall	Cwt.	1.1	2.7	4.6	215	250	250	239	675	1150	5.80	5.30	3915	6095
Onions, early summer	Cwt.	2.1	4.0	4.7	309	250	310	651	1000	1457	4.35	3.15	4350	3780
Tomatoes for processing	Tons	1.0	.5	.6	11.4	10.0	12.0	11.4	5.0	7.2	34.00	34.00	170	245

1/ Preliminary.
2/ Estimates discontinued.
3/ Pounds.
4/ 500 pound gross weight bales.
5/ Bags of 100 pounds.
6/ 1966-6.8 million pounds economic abandonment.
7/ Includes production not marketed and excluded in computing value, 134,000 cwt.

REALIZED GROSS AND NET INCOME OF FARM OPERATORS FROM FARMING, AND TOTAL, 1963-1966

Item	Year			
	1963	1964	1965	1966 <u>1/</u>
Number of Farms	16.1	15.6	14.9	14.6
---1,000,000 dollars---				
Cash receipts from farm marketings	269.8	241.7	262.0	289.6
Government payments	15.5	18.7	22.3	37.5
Value of home consumption	4.7	3.8	4.1	4.4
Gross rental value of farm dwellings	8.7	11.3	10.6	10.8
TOTAL	298.4	275.5	299.0	342.2
Farm production expenses	205.5	177.3	209.6	215.4
Realized net farm income	92.9	98.2	89.5	126.9
Net changes in farm inventories	5.4	-19.8	7.7	-1.5
TOTAL NET FARM INCOME	98.3	78.4	97.2	125.3

CASH RECEIPTS FROM FARM MARKETINGS, BY COMMODITIES, 1963-1966

Commodity	Year			
	1963	1964	1965	1966 <u>1/</u>
---1,000 dollars---				
Cattle and calves	134892	116004	138327	154589
Sheep and lambs	6524	5924	5602	6416
Wool	4469	4673	3468	4182
Cotton lint	44617	44617	35565	33443
Cottonseed	6164	5069	4479	5374
Wheat	7361	3923	6253	7849
Sorghum grain	10171	10061	10330	11386
Hay	10858	10918	12862	13011
Broomcorn	2617	1823	1505	317
Dry beans	290	324	331	1706
Apples	811	1867	960	2648
Peanuts	2355	1916	2050	2050
Pecans	1785	2173	1529	2436

1/ Preliminary

PRINCIPAL CROPS: ACREAGE, YIELD, PRODUCTION, PRICE, VALUE, AVERAGE 1962-66, ANNUAL 1967 AND 1968

Commodity	Unit	Acreage harvested			Yield per acre				Production				Season Average Price		Value of Production	
		Average 1962-66	1967	1968	Average 1962-66	1967	1968	Average 1962-66	1967	1968	1967	1968	1967	1968	1967	1968
		1,000 acres	1,000 acres	1,000 acres	See Unit Column			1,000	1,000	1,000	Dollars	Dollars	1,000	1,000		
GENERAL CROPS																
Corn for grain	Bu.	13	16	17	38.6	50.0	60.0	518	800	1020	1.33	1.36	1064	1387		
Corn for silage	Tons	17	27	29	15.5	17.0	15.5	266	459	450	--	--	--	--		
Corn for forage	Tons	3	1	3	--	--	--	--	--	--	--	--	--	--		
All Wheat	Bu.	181	141	305	22.9	28.0	25.0	4092	3948	7625	1.37	1.24	5409	9455		
Barley	Bu.	18	16	16	50.8	51.0	61.0	886	816	976	1.05	.97	857	947		
Sorghum Grain	Bu.	220	314	279	52.6	61.0	56.0	11702	19154	15624	0.99	0.98	18962	15312		
Sorghum silage	Tons	14	11	8	12.0	13.0	11.3	172	143	90	--	--	--	--		
Sorghum forage	Tons	52	86	79	2.06	1.90	1.60	108	163	126	20.50	18.50	3342	2331		
Broomcorn	Tons	34	25	26	2/ 315	2/250	2/ 305	5.5	3.1	4.0	430.00	405.00	1333	1620		
Cotton Lint	Lbs.	176	122	152	657	619	557	3/242	3/ 157	3/177	31.75	25.20	24935	22230		
Cottonseed	Tons	--	--	--	--	--	--	100	68	74	59.60	52.90	4053	3915		
Beans, dry	Lbs.	6	4	4	628	500	525	4/ 40	4/ 20	4/ 21	8.00	7.20	160	151		
Potatoes	Cwt.	2.4	3.1	4.3	172	200	180	409	620	774	2.48	2.40	1538	1858		
Sweetpotatoes	Cwt.	1.0	.4	.4	84	90	110	81	36	44	5.81	5.80	2.09	255		
Peanuts	Lbs.	.8	8.0	7.9	2050	1990	2240	15910	15920	17696	.142	.140	2261	2477		
SEED CROPS																
Alfalfa seed	Lbs.	4.9	2.6	3.0	194	195	215	966	507	645	50.50	51.50	256	332		
HAY CROPS																
All hay	Tons	246	270	273	3.36	3.57	3.84	825	963	1049	30.50	26.50	29372	27798		
Alfalfa	Tons	176	193	203	4.24	4.50	4.70	743	868	954	--	--	--	--		
Clc-Tin Hay	Tons	17	19	17	1.37	1.70	1.65	23	32	28	--	--	--	--		
Grain	Tons	16	16	19	1.31	1.25	1.15	21	20	22	--	--	--	--		
Other tame hay	Tons	16	19	14	1.15	1.35	1.60	19	26	22	--	--	--	--		
Wild hay	Tons	21	23	20	0.89	0.75	1.15	18	17	23	--	--	--	--		
FRUITS AND NUTS																
Pecans, improved	Lbs.	--	--	--	--	--	--	7000	2900	10000	.470	.450	1363	4500		
Apples	Lbs.	--	--	--	--	--	--	31300	4300	42400	.0721	.0524	310	2222		
COMMERCIAL VEGETABLES																
Lettuce, early spring	Cwt.	1.0	3.1	5.2	235	260	250	227	806	5/1300	6.90	2.95	5561	2224		
Lettuce, early fall	Cwt.	1.6	4.6	6.4	225	250	225	348	1150	1440	5.30	4.70	6095	6768		
Onions, early summer	Cwt.	2.6	4.7	4.1	292	310	300	731	5/1457	1230	3.15	4.00	3780	4920		
Tomatoes for processing	Tons	.9	.6	.9	11.2	12.0	14.0	10.4	7.2	12.6	34.00	34.00	245	428		

1/ Preliminary. 2/ Pounds. 3/ 500 pound gross weight bales. 4/ Bags of 100 pounds. 5/ Includes some quantities not marketed and excluded in computing value. Lettuce Early Spring, 1968: 546,000 Cwt. - Onions, 1967: 257,000 Cwt.

New Mexico Agricultural Statistics

FARM INCOME
REALIZED GROSS AND NET INCOME OF FARM OPERATORS FROM FARMING, AND TOTAL, 1964-1967

Item	Year			
	1964	1965	1966	1967 1/
Number of Farms	15.4	14.9	14.6	14.3
---1,000--- ---1,000,000 dollars---				
Cash receipts from farm marketings	238.5	262.5	299.5	317.4
Government payments	18.7	22.3	37.5	33.3
Value of home consumption	3.8	3.9	4.1	4.1
Gross rental value of farm dwellings	10.4	10.7	10.8	11.1
TOTAL	268.6	299.4	341.9	365.9
Farm production expenses	177.8	209.7	217.1	248.9
Realized net farm income	90.8	89.7	124.8	117.0
Net changes in farm inventories	-8.0	7.7	-1.3	-2.3
TOTAL NET FARM INCOME	82.9	97.4	123.6	114.7

CASH RECEIPTS FROM FARM MARKETINGS, BY COMMODITIES, 1964-1967

Commodity	Year			
	1964	1965	1966	1967 1/
---1,000 dollars---				
Cattle and calves	116004	138327	154589	184671
Sheep and lambs	5924	5602	6371	5941
Wool	4673	3468	4202	3300
Cotton	46688	35490	32119	26529
Cotton lint	5075	4479	5378	3758
Cottonseed	3967	6254	6819	6076
Wheat	9732	10339	11711	14651
Sorghum grain	10918	12864	13729	15843
Hay	1823	1505	1708	1444
Broomcorn	324	330	317	213
Dry beans	2306	958	1897	250
Apples	1916	1904	2069	2064
Peanuts	2064	1529	3259	1386

New Mexico Agricultural Statistics

GRAIN STOCKS: QUANTITIES STORED ON AND OFF FARMS, 1966, 1967 AND 1968

Year	On farms				Off farms			
	Jan. 1	Apr. 1	July 1	Oct. 1	Jan. 1	Apr. 1	July 1	Oct. 1
	1,000 bushels	1,000 bushels	1,000 bushels	1,000 bushels	1,000 bushels	1,000 bushels	1,000 bushels	1,000 bushels
<u>Wheat</u>								
1966	197	98	49	333	2642	1439	1161	1483
1967	141	94	47	434	1361	865	487	1547
1968 ^{1/}	197	158			1772	990		
<u>Corn</u>								
1966	526	234	117	41	20	29	12	7
1967	437	207	109	55	41	30	29	3
1968 ^{1/}	NA	NA			NA	NA		
<u>Barley</u>								
1966	92	65	27	210	46	48	24	93
1967	92	50	29	220	42	44	46	102
1968 ^{1/}	NA	NA			NA	NA		
<u>Grain Sorghum</u>								
1966	1374	937	312	250	6858	5020	3196	2191
1967	2550	1275	638	398	6649	4755	2839	1709
1968 ^{1/}	3639	1915			8577	5957		

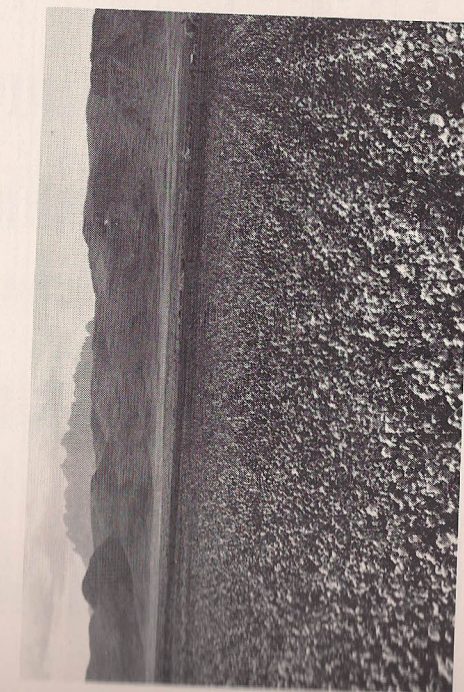
^{1/} Preliminary
NA Not available

HAY STOCKS: QUANTITIES STORED ON FARMS, 1966, 1967 AND 1968

1966		1967		1968 ^{1/}	
Jan. 1	May 1	Jan. 1	May 1	Jan. 1	May 1
1,000 tons	1,000 tons	1,000 tons	1,000 tons	1,000 tons	1,000 tons
414	122	504	112	347	106

^{1/} Preliminary

New Mexico Agricultural Statistics



ALL COTTON: ACREAGE, YIELD, AND PRODUCTION, BY COUNTIES, IRRIGATED AND NON-IRRIGATED - 1966

County	Acres Planted			Acres Harvested			Yield per Harvested Acre			Production (500 lb. gross weight bales)		
	Irrig.	Non-irrig.	Total	Irrig.	Non-irrig.	Total	Irrig.	Non-irrig.	Total	Irrig.	Non-irrig.	Total
	Acres	Acres	Acres	Acres	Acres	Acres	Pounds	Pounds	Pounds	Bales	Bales	Bales
Curry	990	0	990	930	0	930	331	---	331	641	---	641
De Baca	400	0	400	280	0	280	500	---	500	286	---	286
Harding	10	0	10	0	0	0	---	---	---	---	---	---
Quay	1850	0	1850	1190	0	1190	554	---	554	1371	---	1371
Roosevelt	10230	2000	12230	9830	1470	11300	548	225	506	11220	689	11909
NORTHEAST DISTRICT	13480	2000	15480	12230	1470	13700	529	225	498	13518	689	14207
Grant	40	0	40	25	0	25	480	---	480	25	---	25
Hidalgo	4200	0	4200	4130	0	4130	747	---	747	6433	---	6433
Luna	9845	0	9845	9680	0	9680	947	---	947	19090	---	19090
Sierra	2230	0	2230	2160	0	2160	662	---	662	2980	---	2980
Socorro	1310	0	1310	1285	0	1285	632	---	632	1694	---	1694
SOUTHWEST DISTRICT	17625	0	17625	17280	0	17280	839	---	839	30222	---	30222
Chaves	24670	0	24670	24085	0	24085	769	---	769	38571	---	38571
Dona Ana	45780	0	45780	44025	0	44025	629	---	629	57699	---	57699
Eddy	20755	0	20755	18960	0	18960	641	---	641	25345	---	25345
Lea	15770	320	16090	14410	260	14670	429	200	425	12889	108	12997
Otero	1600	0	1600	1280	0	1280	734	---	734	1959	---	1959
SOUTHEAST DISTRICT	108575	320	108895	102760	260	103020	558	200	636	136463	108	136571
STATE	139680	2320	142000	132270	1730	134000	654	221	648	180203	797	181000

COTTONSEED: PRODUCTION, FARM DISPOSITION, PRICE, AND VALUE, 1965, 1966 AND 1967

Year	Production 1,000 tons	Farm Disposition		Season Average Price Per Ton Dollars	Value of Production 1,000 dollars
		Sold	Used on Farms		
		1,000 tons	1,000 tons		
1965	95	92	3	49.60	4712
1966	75	72	3	70.50	5288
1967	67	64	3	59.60	3993

ALL COTTON: ACREAGE, YIELD, AND PRODUCTION, BY COUNTIES, IRRIGATED AND NON-IRRIGATED, 1967

County	Acres Planted			Acres Harvested			Yield per Harvested Acre			Production (500 lb. gross weight bales)		
	Irrig.	Non-irrig.	Total	Irrig.	Non-irrig.	Total	Irrig.	Non-irrig.	Total	Irrig.	Non-irrig.	Total
	Acres	Acres	Acres	Acres	Acres	Acres	Pounds	Pounds	Pounds	Bales	Bales	Bales
Curry	780	100	880	400	80	480	465	143	608	386	21	407
De Baca	340	0	340	160	0	160	694	---	694	225	---	225
Harding	10	0	10	0	0	0	---	---	---	---	---	---
Quay	1760	0	1760	1360	0	1360	416	---	416	1181	---	1181
Roosevelt	8620	1500	10120	7050	500	7550	478	144	455	7022	150	7172
NORTHWEST DISTRICT	11510	1600	13110	8970	570	9540	472	144	452	8814	150	8964
Grant	70	0	70	70	0	70	757	---	757	111	---	111
Hidalgo	4120	0	4120	3995	0	3995	667	---	667	5541	---	5541
Luna	9790	0	9790	9735	0	9735	800	---	800	16185	---	16185
Sierra	1950	0	1950	1895	0	1895	559	---	559	2203	---	2203
Socorro	1300	0	1300	1250	0	1250	560	---	560	1455	---	1455
SOUTHWEST DISTRICT	17230	0	17230	16945	0	16945	724	---	724	25495	---	25495
Chaves	22150	0	22150	18575	0	18575	641	---	641	24752	---	24752
Dona Ana	42630	0	42630	41205	0	41205	607	---	607	52073	---	52073
Eddy	19520	0	19520	18910	0	18910	721	000	721	28342	---	28342
Lea	15630	300	15930	15190	260	15450	488	162	483	15404	88	15492
Otero	1430	0	1430	1375	0	1375	652	---	652	1861	---	1861
SOUTHEAST DISTRICT	101360	300	101660	95255	260	95515	618	162	617	122432	88	122520
STATE	130100	1900	132000	121170	830	122000	622	149	619	156741	259	157000

AMERICAN EGYPTIAN COTTON: ACREAGE, YIELD, AND PRODUCTION, BY COUNTIES, ALL IRRIGATED, 1966 AND 1967

County	1966				1967			
	Acres		Yield per harvested acres Pounds	Production (500 pound gross weight bales) Bales	Acres		Yield per harvested acre Pounds	Production (500 pound gross weight bales) Bales
	Planted	Harvested			Planted	Harvested		
Hidalgo	20	20	250	11	20	200	6	
Luna	125	120	433	108	110	105	58	
Sierra	200	190	121	48	180	165	152	
SOUTHWEST DISTRICT	345	330	242	167	310	285	216	
Chaves	40	35	457	34	40	75	14	
Dona Ana	15470	14835	413	12758	13500	12855	9690	
Eddy	115	90	200	38	120	110	70	
Otero	30	10	100	3	30	25	10	
SOUTHEAST DISTRICT	15655	14970	411	12833	13690	13015	9784	
STATE	16000	15300	408	13000	14000	13300	10000	

UPLAND COTTON: ACREAGE, YIELD, AND PRODUCTION, BY COUNTIES, IRRIGATED AND NON-IRRIGATED 1966

County	Acres Planted			Acres Harvested			Yield per Harvested Acre			Production (500 lb. gross weight bales)		
	Irrig.	Non-irrig.	Total	Irrig.	Non-irrig.	Total	Irrig.	Non-irrig.	Total	Irrig.	Non-irrig.	Total
	Acres	Acres	Acres	Acres	Acres	Acres	Pounds	Pounds	Pounds	Bales	Bales	Bales
Curry	990	0	990	930	0	930	331	---	331	641	---	641
De Baca	400	0	400	280	0	280	500	---	500	286	---	286
Harding	10	0	10	0	0	0	---	---	---	---	---	---
Quay	1850	0	1850	1190	0	1190	554	---	554	1371	---	1371
Roosevelt	10230	2000	12230	9830	1470	11300	548	225	506	11220	689	11909
NORTHEAST DISTRICT	13480	2000	15480	12230	1470	13700	529	225	498	13518	689	14207
Grant	40	0	40	25	0	25	480	---	480	25	---	25
Hidalgo	4180	0	4180	4110	0	4110	750	---	750	6422	---	6422
Luna	9720	0	9720	9560	0	9560	953	---	953	18982	---	18982
Sierra	2030	0	2030	1970	0	1970	714	---	714	2932	---	2932
Socorro	1310	0	1310	1285	0	1285	632	---	632	1694	---	1694
SOUTHWEST DISTRICT	17280	0	17280	16950	0	16950	851	---	851	30055	---	30055
Chaves	24630	0	24630	24050	0	24050	769	---	769	38537	---	38537
Dona Ana	30310	0	30310	29190	0	29190	739	---	739	44941	---	44941
Eddy	20640	0	20640	18870	0	18870	643	---	643	25307	---	25307
Lea	15770	320	16090	14410	260	14670	429	200	425	12889	108	12997
Otero	1570	0	1570	1270	0	1270	739	---	739	1956	---	1956
SOUTHEAST DISTRICT	92920	320	93240	87790	260	88050	676	200	675	123630	108	123738
STATE	123680	2320	126000	116970	1730	118700	686	221	679	167203	797	168000

UPLAND COTTON: ACREAGE, YIELD, AND PRODUCTION, BY COUNTIES, IRRIGATED AND NON-IRRIGATED, 1967

County	Acres Planted			Acres Harvested			Yield per Harvested Acre			Production (500 lb. gross weight bales)		
	Irrig.	Non-irrig.	Total	Irrig.	Non-irrig.	Total	Irrig.	Non-irrig.	Total	Irrig.	Non-irrig.	Total
	Acres	Acres	Acres	Acres	Acres	Acres	Pounds	Pounds	Pounds	Bales	Bales	Bales
Curry	780	100	880	400	70	470	465	143	417	386	21	407
De Baca	340	0	340	160	0	160	694	---	694	225	---	225
Harding	10	0	10	0	0	0	---	---	---	---	---	---
Quay	1760	0	1760	1360	0	1360	416	---	416	1181	---	1181
Roosevelt	8620	1500	10120	7050	500	7550	478	144	455	7022	150	7172
NORTHEAST DISTRICT	11510	1600	13110	8970	570	9540	472	144	452	8814	171	8985
Grant	70	0	70	70	0	70	757	---	757	111	---	111
Hidalgo	4100	0	4100	3980	0	3980	669	---	669	5535	---	5535
Luna	9680	0	9680	9630	0	9630	806	---	806	16127	---	16127
Sierra	1770	0	1770	1730	0	1730	570	---	570	2051	---	2051
Socorro	1300	0	1300	1250	0	1250	560	---	560	1455	---	1455
SOUTHWEST DISTRICT	16920	0	16920	16660	0	16660	730	---	730	25279	---	25279
Chaves	22110	0	22110	18550	0	18550	642	---	642	24738	---	24738
Dona Ana	29130	0	29130	28350	0	28350	720	---	720	42383	---	42383
Eddy	19400	0	19400	18800	0	18800	724	---	724	28272	---	28272
Lea	15630	300	15930	15190	260	15450	488	162	483	15404	88	15492
Otero	1400	0	1400	1350	0	1350	660	---	660	1851	---	1851
SOUTHEAST DISTRICT	87670	300	87970	82240	260	82500	659	162	658	112648	88	112736
STATE	116100	1900	118000	107870	830	108700	655	149	651	146741	259	147000

BARLEY: ACREAGE, YIELD AND PRODUCTION BY COUNTIES, IRRIGATED AND NON-IRRIGATED, 1966

County	Acres planted all purposes	Acres harvested			Yield per harvested acre			Production		
		Irrig.	Non-irrig.	Total	Irrig.	Non-irrig.	Total	Irrig.	Non-irrig.	Total
Bernalillo	150	80	0	80	35.0	35.0	2800	2800
McKinley	50	10	0	10	35.0	35.0	350	350
Rio Arriba	300	50	100	150	40.0	25.0	30.0	2000	2500	4500
Sandoval	60	30	20	50	46.0	10.0	31.6	1380	200	1580
San Juan	650	300	0	300	55.0	55.0	16500	16500
Santa Fe	450	420	0	420	73.0	73.0	30660	30660
Taos	950	600	50	650	55.0	18.0	52.2	33000	900	33900
Valencia	1800	350	0	350	50.0	50.0	17500	17500
NORTHWEST DISTRICT	4410	1840	170	2010	56.6	21.2	53.6	104190	3600	107790
Colfax	350	100	20	120	51.0	16.5	45.2	5100	330	5430
Curry	1500	420	220	640	52.0	24.0	42.4	21840	5280	27120
De Baca	150	100	0	100	50.0	50.0	5000	5000
Guadalupe	30	0	0	0
Mora	340	100	0	100	55.0	55.0	5500	5500
Quay	250	0	60	60	22.0	22.0	1320	1320
Roosevelt	600	200	50	250	71.0	15.0	59.8	14200	750	14950
San Miguel	150	0	80	80	29.0	29.0	2320	2320
Torrance	500	230	0	230	49.0	49.0	11270	11270
Union	150	150	0	150	55.0	55.0	8250	8250
NORTHEAST DISTRICT	4020	1300	430	1730	54.7	23.3	46.9	71160	10000	81160
Catron	100	50	0	50	40.0	40.0	2000	2000
Grant	500	50	0	50	50.0	50.0	2500	2500
Hidalgo	1500	700	0	700	63.0	63.0	44100	44100
Luna	2800	1200	0	1200	65.0	65.0	78000	78000
Sierra	450	200	0	200	65.0	65.0	13000	13000
Socorro	700	210	0	210	70.0	70.0	14700	14700
SOUTHWEST DISTRICT	6050	2410	0	2410	64.0	64.0	154300	154300
Chaves	5000	4000	0	4000	68.0	68.0	272000	272000
Dona Ana	3640	2500	0	2500	60.0	60.0	150000	150000
Eddy	1700	800	0	800	60.0	60.0	48000	48000
Lea	800	400	0	400	50.0	50.0	20000	20000
Lincoln	80	0	0	0
Otero	300	150	0	150	45.0	45.0	6750	6750
SOUTHEAST DISTRICT	11520	7850	0	7850	63.3	63.3	496750	496750
STATE	26000	13400	600	14000	61.7	22.7	60.0	826400	13600	840000

BARLEY: ACREAGE, YIELD AND PRODUCTION BY COUNTIES, IRRIGATED AND NON-IRRIGATED, 1967 1/

County	Acres planted all purposes	Acres harvested			Yield per harvested acre			Production		
		Irrig.	Non-irrig.	Total	Irrig.	Non-irrig.	Total	Irrig.	Non-irrig.	Total
Bernalillo	150	80	0	80	35.0	35.0	2800	2800
McKinley	50	20	0	20	35.0	35.0	700	700
Rio Arriba	300	60	130	190	50.0	26.0	33.6	3000	3380	6380
Sandoval	80	30	20	50	40.0	11.0	28.4	1200	220	1420
San Juan	650	300	0	300	50.0	50.0	15000	15000
Santa Fe	420	420	0	420	75.0	75.0	31500	31500
Taos	1000	600	50	650	40.0	12.0	37.8	24000	600	24600
Valencia	1800	500	0	500	40.0	40.0	20000	20000
NORTHWEST DISTRICT	4450	2010	200	2210	48.9	21.0	46.3	98200	4200	102400
Colfax	350	100	20	120	48.0	17.5	42.9	4800	350	5150
Curry	3000	1200	400	1600	57.0	20.0	47.8	68400	8000	76400
De Baca	150	80	0	80	57.5	57.5	4600	4600
Guadalupe	30	0	0	0
Mora	350	100	0	100	45.0	45.0	4500	4500
Quay	250	0	100	100	15.0	15.0	1500	1500
Roosevelt	600	150	50	200	45.0	10.0	36.2	6750	500	7250
San Miguel	150	50	30	80	25.0	15.0	21.2	1250	450	1700
Torrance	590	300	0	300	83.0	83.0	24900	24900
Union	150	50	0	50	50.0	50.0	2500	2500
NORTHEAST DISTRICT	5620	2030	600	2630	58.0	18.0	48.9	117700	10800	128500
Catron	100	50	0	50	39.0	39.0	1950	1950
Grant	500	50	0	50	45.0	45.0	2250	2250
Hidalgo	800	600	0	600	70.0	70.0	42000	42000
Luna	3400	1500	0	1500	65.0	65.0	97500	97500
Sierra	450	200	0	200	55.0	55.0	11000	11100
Socorro	700	210	0	210	65.0	65.0	13650	13650
SOUTHWEST DISTRICT	5950	2610	0	2610	64.5	64.5	168350	168350
Chaves	7200	4500	0	4500	50.0	50.0	225000	225000
Dona Ana	3800	2500	0	2500	50.0	50.0	125000	125000
Eddy	1800	1000	0	1000	40.0	40.0	40000	40000
Lea	800	400	0	400	50.0	50.0	20000	20000
Lincoln	80	0	0	0
Otero	300	150	0	150	45.0	45.0	6750	6750
SOUTHEAST DISTRICT	13980	8550	0	8550	48.7	48.7	416750	416750
STATE	30000	15200	800	16000	52.7	18.8	51.0	801000	15000	816000

1/ Preliminary

BARLEY: ACREAGE, YIELD AND PRODUCTION BY COUNTIES, IRRIGATED AND NON-IRRIGATED, 1967

County	Acres planted all purposes	Acres harvested			Yield per harvested acre			Production		
		Irrig.	Non-Irrig.	Total	Irrig.	Non-Irrig.	Total	Irrig.	Non-Irrig.	Total
Bernalillo	150	80	0	80	35.0	35.0	2800	2800
McKinley	50	20	0	20	35.0	35.0	700	700
Rio Arriba	300	60	130	190	50.0	26.0	33.6	3000	3380	6380
Sandoval	80	30	20	50	40.0	11.0	28.4	1200	220	1420
San Juan	650	300	0	300	50.0	50.0	15000	15000
Santa Fe	420	420	0	420	75.0	75.0	31500	31500
Taos	1000	600	50	650	40.0	12.0	37.8	24000	600	24600
Valencia	1800	500	0	500	40.0	40.0	20000	20000
NORTHWEST DISTRICT	4450	2010	200	2210	48.9	21.0	46.3	98200	4200	102400
Colfax	350	100	20	120	48.0	17.5	42.9	4800	350	5150
Curry	3000	1200	400	1600	57.0	20.0	47.8	68400	8000	76400
De Baca	150	80	0	80	57.5	57.5	4600	4600
Guadalupe	30	0	0	0
Mora	350	100	0	100	45.0	45.0	4500	4500
Quay	250	0	100	100	15.0	15.0	1500	1500
Roosevelt	600	150	50	200	45.0	10.0	36.2	6750	500	7250
San Miguel	150	50	30	80	25.0	15.0	21.2	1250	450	1700
Torrance	590	300	0	300	83.0	83.0	24900	24900
Union	150	50	0	50	50.0	50.0	2500	2500
NORTHEAST DISTRICT	5620	2030	600	2630	58.0	18.0	48.9	117700	10800	128500
Catron	100	50	0	50	39.0	39.0	1950	1950
Grant	500	50	0	50	45.0	45.0	2250	2250
Hidalgo	800	600	0	600	70.0	70.0	42000	42000
Luna	3400	1500	0	1500	65.0	65.0	97500	97500
Sierra	450	200	0	200	55.0	55.0	11000	11100
Socorro	700	210	0	210	65.0	65.0	13650	13650
SOUTHWEST DISTRICT	5950	2610	0	2610	64.5	64.5	168350	168350
Chaves	7200	4500	0	4500	50.0	50.0	225000	225000
Dona Ana	3800	2500	0	2500	50.0	50.0	125000	125000
Eddy	1800	1000	0	1000	40.0	40.0	40000	40000
Lea	800	400	0	400	50.0	50.0	20000	20000
Lincoln	80	0	0	0
Otero	300	150	0	150	45.0	45.0	6750	6750
SOUTHEAST DISTRICT	13980	8550	0	8550	48.7	48.7	416750	416750
STATE	30000	15200	800	16000	52.7	18.8	51.0	801000	15000	816000

BARLEY: ACREAGE, YIELD AND PRODUCTION BY COUNTIES, IRRIGATED AND NON-IRRIGATED, 1968 1/

County	Acres planted all purposes	Acres harvested			Yield per harvested acre			Production		
		Irrig.	Non-Irrig.	Total	Irrig.	Non-Irrig.	Total	Irrig.	Non-Irrig.	Total
Bernalillo	100	80	0	80	37.0	37.0	2960	2960
McKinley	60	0	0	0
Rio Arriba	200	60	90	150	49.0	26.0	35.2	2940	2340	5280
Sandoval	80	0	60	60	20.0	20.0	1200	1200
San Juan	300	150	0	150	48.0	48.0	7200	7200
Santa Fe	600	390	60	450	69.0	20.0	62.5	26910	1200	28110
Taos	760	660	40	700	40.0	14.0	38.5	26400	560	26960
Valencia	1500	500	0	500	54.0	54.0	27000	27000
NORTHWEST DISTRICT	3600	1840	250	2090	50.8	21.2	47.2	93410	5300	98710
Colfax	300	150	0	150	49.0	49.0	7350	7350
Curry	3400	2200	200	2400	85.0	25.0	80.0	187000	5000	192000
De Baca	120	120	0	120	64.0	64.0	7680	7680
Guadalupe	30	30	0	30	40.0	40.0	1200	1200
Mora	350	130	70	200	40.0	15.0	31.2	5200	1050	6250
Quay	350	0	200	200	24.0	24.0	4800	4800
Roosevelt	500	300	100	400	74.0	14.0	59.0	22200	1400	23600
San Miguel	150	30	30	60	25.0	15.0	20.0	750	450	1200
Torrance	800	670	0	670	53.0	53.0	35510	35510
Union	500	450	0	450	50.0	50.0	22500	22500
NORTHEAST DISTRICT	6500	4080	600	4680	70.9	21.2	64.5	289390	12700	302090
Catron	50	30	0	30	40.0	40.0	1200	1200
Grant	400	200	0	200	40.0	40.0	8000	8000
Hidalgo	800	600	0	600	70.0	70.0	42000	42000
Luna	3200	1500	0	1500	72.0	72.0	108000	108000
Sierra	400	300	0	300	40.0	40.0	12000	12000
Socorro	500	200	0	200	65.0	65.0	13000	13000
SOUTHWEST DISTRICT	5350	2830	0	2830	65.1	65.1	184200	184200
Chaves	6000	3000	0	3000	57.0	57.0	171000	171000
Dona Ana	3200	1900	0	1900	70.0	70.0	133000	133000
Eddy	1200	700	0	700	70.0	70.0	49000	49000
Lea	800	600	0	600	40.0	40.0	24000	24000
Lincoln	70	0	0	0
Otero	280	200	0	200	70.0	70.0	14000	14000
SOUTHEAST DISTRICT	11550	6400	0	6400	61.1	61.1	391000	391000
STATE	27000	15150	850	16000	63.2	21.2	61.0	958000	18000	976000

1/ Preliminary

CORN: ACREAGE, YIELD AND PRODUCTION BY COUNTIES, IRRIGATED AND NON-IRRIGATED, 1966

County	Acres planted all purposes	Harvested for grain								
		Acres			Yield per acre			Production		
		Irrig.	Non-Irrig.	Total	Irrig.	Non-Irrig.	Total	Irrig.	Non-Irrig.	Total
Acres	Acres	Acres	Acres	Bushels	Bushels	Bushels	Bushels	Bushels	Bushels	
Bernalillo	1000	300	50	350	35.0	10.0	31.4	10500	500	11000
McKinley	2700	800	1200	2000	23.0	10.0	15.2	18400	12000	30400
Rio Arriba	1600	450	0	450	35.0	35.0	15750	15750
Sandoval	1600	1080	20	1100	32.0	10.0	31.6	34550	200	34750
San Juan	6000	1800	200	2000	55.0	8.0	50.3	99000	1600	100600
Santa Fe	2500	770	30	800	65.0	11.0	63.0	50050	330	50380
Taos	300	250	0	250	25.0	25.0	6250	6250
Valencia	1800	500	150	650	35.0	12.0	29.7	17500	1800	19300
NORTHWEST DISTRICT	17500	5950	1650	7600	42.4	10.0	35.3	252000	16430	268430
Colfax	2900	400	450	850	40.0	10.0	24.1	16000	4500	20500
Curry	3000	40	0	50	50.0	15.0	43.0	2000	150	2150
De Baca	50	10	0	10	50.0	50.0	500	500
Guadalupe	200	100	0	100	45.0	45.0	4500	4500
Harding	50	40	0	40	35.0	35.0	1400	1400
Mora	200	10	20	30	50.0	6.0	20.7	500	120	620
Quay	500	30	0	30	42.0	42.0	1260	1260
Roosevelt	1400	200	0	200	77.0	77.0	15400	15400
San Miguel	600	140	110	250	31.0	10.9	22.2	4340	1200	5540
Torrance	2300	500	150	650	50.0	10.0	40.8	25000	1500	26500
Union	500	0	10	10	10.0	10.0	100	100
NORTHEAST DISTRICT	11700	1470	750	2220	48.2	10.1	35.3	70900	7570	78470
Catron	50	30	0	30	50.0	50.0	1500	1500
Grant	400	50	0	50	45.0	45.0	2250	2250
Hidalgo	2000	450	0	450	100.0	100.0	45000	45000
Luna	2700	1500	0	1500	60.0	60.0	90000	90000
Sierra	500	50	0	50	50.0	50.0	2500	2500
Socorro	450	300	0	300	52.0	52.0	15600	15600
SOUTHWEST DISTRICT	6100	2380	0	2380	65.9	65.9	156850	156850
Chaves	2500	400	0	400	60.0	60.0	24000	24000
Dona Ana	800	100	0	100	40.0	40.0	4000	4000
Eddy	1000	40	0	40	40.0	40.0	1600	1600
Lea	1000	100	0	100	55.0	55.0	5500	5500
Lincoln	100	20	0	20	42.5	42.5	850	850
Otero	300	140	0	140	45.0	45.0	6300	6300
SOUTHEAST DISTRICT	5700	800	0	800	52.8	52.8	42250	42250
STATE	41000	10600	2400	13000	49.2	10.0	42.0	522000	24000	546000

CORN: ACREAGE, YIELD AND PRODUCTION BY COUNTIES, IRRIGATED AND NON-IRRIGATED, 1967 ^{1/}

County	Acres planted all purposes	Harvested for grain								
		Acres			Yield per acre			Production		
		Irrig.	Non-Irrig.	Total	Irrig.	Non-Irrig.	Total	Irrig.	Non-Irrig.	Total
Acres	Acres	Acres	Acres	Bushels	Bushels	Bushels	Bushels	Bushels	Bushels	
Bernalillo	1000	70	30	100	35.0	14.0	28.7	2450	420	2870
McKinley	3300	800	1400	2200	25.0	10.0	15.5	20000	14000	34000
Rio Arriba	1400	500	0	500	30.0	30.0	15000	15000
Sandoval	1400	1050	50	1100	30.0	29.0	31500	450	31950
San Juan	5500	2000	200	2200	50.0	10.0	46.4	100000	2000	102000
Santa Fe	2500	850	50	900	65.0	10.0	61.9	55250	500	55750
Taos	200	130	20	150	25.0	10.0	23.0	3250	200	3450
Valencia	1900	500	100	600	26.0	11.0	23.5	13000	1100	14100
NORTHWEST DISTRICT	17200	5900	1850	7750	40.8	10.1	33.4	240450	18670	259120
Colfax	2500	730	270	1000	40.0	11.0	32.2	29200	2970	32170
Curry	3500	30	0	30	50.0	50.0	1500	1500
De Baca	100	10	0	10	46.0	46.0	460	460
Guadalupe	200	100	0	100	40.0	40.0	4000	4000
Harding	50	30	10	40	25.0	15.0	22.5	750	150	900
Mora	80	0	10	10	11.0	11.0	110	110
Quay	1500	70	0	70	42.0	42.0	2940	2940
Roosevelt	1500	250	0	250	95.0	95.0	23750	23750
San Miguel	650	200	100	300	30.0	11.0	23.7	6000	1100	7100
Torrance	3000	1060	140	1200	50.0	10.0	45.3	53000	1400	54400
Union	500	0	20	20	10.0	10.0	200	200
NORTHEAST DISTRICT	13580	2480	550	3030	49.0	10.8	42.1	121600	5930	127530
Catron	70	0	0	0
Grant	400	50	0	50	65.0	65.0	3250	3250
Hidalgo	2000	600	0	600	90.0	90.0	54000	54000
Luna	3900	3200	0	3200	65.0	65.0	208000	208000
Sierra	500	100	0	100	40.0	40.0	4000	4000
Socorro	450	300	0	300	50.0	50.0	15000	15000
SOUTHWEST DISTRICT	7320	4250	0	4250	66.9	66.9	284250	284250
Chaves	3700	600	0	600	55.0	55.0	33000	33000
Dona Ana	800	100	0	100	50.0	50.0	5000	5000
Eddy	1200	50	0	50	35.0	35.0	1750	1750
Lea	800	50	0	50	50.0	50.0	2500	2500
Lincoln	100	20	0	20	42.5	42.5	850	850
Otero	300	150	0	150	40.0	40.0	6000	6000
SOUTHEAST DISTRICT	6900	970	0	970	50.6	50.6	49100	49100
STATE	45000	13600	2400	16000	51.1	10.2	45.0	695400	24600	720000

^{1/} Preliminary

CORN: ACREAGE, YIELD AND PRODUCTION BY COUNTIES, IRRIGATED AND NON-IRRIGATED, 1967 ^{1/}

County	Acres planted all purposes	Harvested for grain								
		Acres			Yield per acre			Production		
		Irrig.	Non-Irrig.	Total	Irrig.	Non-Irrig.	Total	Irrig.	Non-Irrig.	Total
Acres	Acres	Acres	Acres	Bushels	Bushels	Bushels	Bushels	Bushels	Bushels	
Bernalillo	1000	70	30	100	40.0	15.0	32.5	2800	450	3250
McKinley	3300	800	1400	2200	30.0	12.0	18.5	24000	16800	40800
Rio Arriba	1400	500	0	500	30.0	30.0	15000	15000
Sandoval	1400	1050	50	1100	30.0	10.0	29.1	31500	500	32000
San Juan	5500	2000	200	2200	60.0	10.0	55.5	120000	2000	122000
Santa Fe	2500	850	50	900	70.0	11.0	66.7	59500	550	60050
Taos	200	130	20	150	25.0	10.0	23.0	3250	200	3450
Valencia	1900	500	100	600	30.0	12.0	27.0	15000	1200	16200
NORTHWEST DISTRICT	17200	5900	1850	7750	45.9	11.7	37.8	271050	21700	292750
Colfax	2500	730	270	1000	45.0	15.0	36.9	32850	4050	36900
Curry	3500	30	0	30	50.0	50.0	1500	1500
De Baca	100	10	0	10	46.0	46.0	460	460
Guadalupe	200	100	0	100	40.0	40.0	4000	4000
Harding	50	30	10	40	25.0	14.0	22.2	750	140	890
Mora	80	0	10	10	11.0	11.0	110	110
Quay	1500	70	0	70	42.0	42.0	2940	2940
Roosevelt	1500	250	0	250	124.0	124.0	31000	31000
San Miguel	650	200	100	300	35.0	11.0	27.0	7000	1100	8100
Torrance	3000	1060	140	1200	60.0	10.0	54.2	63600	1400	65000
Union	500	0	20	20	10.0	10.0	200	200
NORTHEAST DISTRICT	13580	2480	550	3030	58.1	12.7	49.9	144100	7000	151100
Catron	70	0	0	0
Grant	400	50	0	50	67.0	67.0	3350	3350
Hidalgo	2000	600	0	600	90.0	90.0	54000	54000
Luna	3900	3200	0	3200	71.0	71.0	227200	227200
Sierra	500	100	0	100	40.0	40.0	4000	4000
Socorro	450	300	0	300	50.0	50.0	15000	15000
SOUTHWEST DISTRICT	7320	4250	0	4250	71.4	71.4	303550	303550
Chaves	3700	600	0	600	60.0	60.0	36000	36000
Dona Ana	800	100	0	100	50.0	50.0	5000	5000
Eddy	1200	50	0	50	40.0	40.0	2000	2000
Lea	800	50	0	50	55.0	55.0	2750	2750
Lincoln	100	20	0	20	42.5	42.5	850	850
Otero	300	150	0	150	40.0	40.0	6000	6000
SOUTHEAST DISTRICT	6900	970	0	970	54.2	54.2	52600	52600
STATE	45000	13600	2400	16000	56.7	12.0	50.0	771300	28700	800000

^{1/} Revised

CORN: ACREAGE, YIELD AND PRODUCTION BY COUNTIES, IRRIGATED AND NON-IRRIGATED, 1968 ^{1/}

County	Acres planted all purposes	Harvested for grain								
		Acres			Yield per acre			Production		
		Irrig.	Non-Irrig.	Total	Irrig.	Non-Irrig.	Total	Irrig.	Non-Irrig.	Total
Acres	Acres	Acres	Acres	Bushels	Bushels	Bushels	Bushels	Bushels	Bushels	
Bernalillo	1200	80	20	100	29.0	15.0	26.2	2320	300	2620
McKinley	3000	570	930	1500	25.0	10.0	15.7	14250	9300	23550
Rio Arriba	1500	600	0	600	30.0	30.0	18000	18000
Sandoval	1200	950	50	1000	34.0	10.0	32.8	32300	500	32800
San Juan	6000	2200	300	2500	60.0	12.0	54.2	132000	3600	135600
Santa Fe	2700	400	50	450	70.0	10.0	63.3	28000	500	28500
Taos	250	130	20	150	22.0	12.0	20.7	2860	240	3100
Valencia	2100	400	100	500	50.0	15.0	43.0	20000	1500	21500
NORTHWEST DISTRICT	17950	5330	1470	6800	46.9	10.8	39.1	249730	15940	265670
Colfax	2500	500	250	750	45.0	15.0	35.0	22500	3750	26250
Curry	4200	30	20	50	80.0	8.0	51.2	2400	160	2560
De Baca	100	90	0	90	60.0	60.0	5400	5400
Guadalupe	200	100	0	100	40.0	40.0	4000	4000
Harding	50	30	0	30	34.0	34.0	1020	1020
Mora	100	60	10	70	50.0	10.0	44.3	3000	100	3100
Quay	1500	100	0	100	65.0	65.0	6500	6500
Roosevelt	2100	350	0	350	110.0	110.0	38500	38500
San Miguel	650	200	100	300	35.0	10.0	26.7	7000	1000	8000
Torrance	4000	1000	100	1100	70.0	10.0	64.5	70000	1000	71000
Union	2400	2050	50	2100	85.0	11.0	83.2	174250	550	174800
NORTHEAST DISTRICT	17800	4510	530	5040	74.2	12.4	67.7	334570	6560	341130
Catron	100	100	0	100	30.0	30.0	3000	3000
Grant	400	100	0	100	69.0	69.0	6900	6900
Hidalgo	600	550	0	550	100.0	100.0	55000	55000
Luna	3700	3100	0	3100	90.0	90.0	279000	279000
Sierra	600	140	0	140	50.0	50.0	7000	7000
Socorro	450	300	0	300	60.0	60.0	18000	18000
SOUTHWEST DISTRICT	5850	4290	0	4290	86.0	86.0	368900	368900
Chaves	5000	350	0	350	60.0	60.0	21000	21000
Dona Ana	1000	150	0	150	50.0	50.0	7500	7500
Eddy	1200	100	0	100	40.0	40.0	4000	4000
Lea	800	100	0	100	50.0	50.0	5000	5000
Lincoln	100	70	0	70	40.0	40.0	2800	2800
Otero	300	100	0	100	40.0	40.0	4000	4000
SOUTHEAST DISTRICT	8400	870	0	870	50.9	50.9	44300	44300
STATE	50000	15000	2000	17000	66.5	11.2	60.0	997500	22500	1020000

^{1/} Preliminary

ALL SORGHUMS: ACREAGE, YIELD AND PRODUCTION BY COUNTIES, IRRIGATED AND NON-IRRIGATED, 1966

County	Acres planted all purposes			Harvested for grain						Production		
	Irrig.	Non-Irrig.	Total	Acres			Yield per acre			Irrig.	Non-Irrig.	Total
				Irrig.	Non-Irrig.	Total	Irrig.	Non-Irrig.	Total			
Acres	Acres	Acres	Acres	Acres	Acres	Acres	Bushels	Bushels	Bushels	Bushels	Bushels	Bushels
Bernalillo	250	0	250	10	0	10	25.0	25.0	250	250
Rio Arriba	150	0	150	0	0	0
Sandoval	30	50	80	10	0	10	26.0	26.0	260	260
San Juan	400	100	500	100	0	100	39.0	39.0	3900	3900
Santa Fe	40	0	40	20	0	20	71.0	71.0	1420	1420
Taos	100	0	100	30	0	30	35.0	35.0	1050	1050
Valencia	500	0	500	420	0	420	51.0	51.0	21420	21420
NORTHWEST DISTRICT	1470	150	1620	590	0	590	48.0	48.0	28300	28300
Colfax	500	1500	2000	500	0	500	40.0	40.0	20000	20000
Curry	61000	37000	98000	60570	29430	90000	100.0	20.0	73.8	6057000	588600	6645600
De Baca	1000	0	1000	650	0	650	100.0	100.0	65000	65000
Guadalupe	50	50	100	0	0	0
Harding	400	600	1000	100	400	500	40.0	22.2	25.8	4000	8880	12880
Mora	200	300	500	200	0	200	40.0	40.0	8000	8000
Quay	10400	24200	34600	9960	9040	19000	60.0	26.0	43.8	597600	235040	832640
Roosevelt	24500	45500	70000	21770	31930	53700	70.0	28.0	45.0	1523900	894040	2417940
San Miguel	250	100	350	100	0	100	42.0	42.0	4200	4200
Torrance	900	300	1200	600	0	600	37.0	37.0	22200	22200
Union	4000	23000	27000	3600	14400	18000	75.0	28.6	37.9	270000	411840	681840
NORTHEAST DISTRICT	103200	132550	235750	98050	85200	183250	87.4	25.1	58.4	8571900	2138400	10710300
Catron	10	20	30	0	0	0
Grant	1200	0	1200	560	0	560	65.0	65.0	36400	36400
Hidalgo	13000	0	13000	12000	0	12000	95.0	95.0	1140000	1140000
Luna	16000	0	16000	14000	0	14000	95.0	95.0	1330000	1330000
Sierra	250	0	250	150	0	150	76.0	76.0	11400	11400
Socorro	700	0	700	600	0	600	90.0	90.0	54000	54000
SOUTHWEST DISTRICT	31160	20	31180	27310	0	27310	94.2	94.2	2571800	2571800
Chaves	10000	0	10000	5900	0	5900	75.0	75.0	442500	442500
Dona Ana	2220	80	2300	2000	0	2000	100.0	100.0	200000	200000
Eddy	1700	0	1700	500	0	500	71.0	71.0	35500	35500
Lea	38000	4000	42000	31000	2000	33000	60.0	30.0	58.2	1860000	60000	1920000
Lincoln	50	0	50	0	0	0
Otero	1400	0	1400	450	0	450	68.0	68.0	30600	30600
SOUTHEAST DISTRICT	53370	4080	57450	39850	2000	41850	64.5	30.0	62.8	2568600	60000	2628600
STATE	189200	136800	326000	165800	87200	253000	82.9	25.2	63.0	13740600	2198400	15939000

New Mexico Agricultural Statistics

ALL SORGHUMS: ACREAGE, YIELD AND PRODUCTION BY COUNTIES, IRRIGATED AND NON-IRRIGATED, 1967 ^{1/}

County	Acres planted all purposes			Harvested for grain						Production		
	Irrig.	Non-Irrig.	Total	Acres			Yield per acre			Irrig.	Non-Irrig.	Total
				Irrig.	Non-Irrig.	Total	Irrig.	Non-Irrig.	Total			
Acres	Acres	Acres	Acres	Acres	Acres	Acres	Bushels	Bushels	Bushels	Bushels	Bushels	Bushels
Bernalillo	300	0	300	20	0	20	35.0	35.0	700	700
McKinley	150	0	150	0	0	0
Rio Arriba	100	60	160	0	0	0
Sandoval	100	40	140	10	0	10	25.0	25.0	250	250
San Juan	400	100	500	100	0	100	36.0	36.0	3600	3600
Santa Fe	50	0	50	20	0	20	67.0	67.0	1340	1340
Taos	100	0	100	20	0	20	35.0	35.0	700	700
Valencia	800	0	800	400	0	400	57.0	57.0	22800	22800
NORTHWEST DISTRICT	2000	200	2200	570	0	570	51.6	51.6	29390	29390
Colfax	500	1600	2100	500	0	500	44.0	44.0	22000	22000
Curry	70000	75000	145000	68000	47000	115000	110.0	22.0	74.0	7480000	1034000	8514000
De Baca	1300	0	1300	750	0	750	110.0	110.0	82500	82500
Guadalupe	100	100	200	10	10	20	50.0	20.0	35.0	500	200	700
Harding	550	650	1200	260	340	600	45.0	25.0	33.7	11700	8500	20200
Mora	150	250	400	100	50	150	40.0	16.0	32.0	4000	800	4800
Quay	11000	29000	40000	9000	10500	19500	55.0	18.0	35.1	495000	189000	684000
Roosevelt	25000	61000	86000	22000	51000	73000	77.0	28.0	42.8	1694000	1428000	3122000
San Miguel	150	250	400	100	0	100	42.0	42.0	4200	4200
Torrance	1000	400	1400	680	0	680	35.0	35.0	23800	23800
Union	4200	28800	33000	3700	20300	24000	70.0	15.0	23.5	259000	304500	563500
NORTHEAST DISTRICT	113950	197050	311000	105100	129200	234300	95.9	22.9	55.7	10076700	2965000	13041700
Catron	50	50	100	0	0	0
Grant	1400	0	1400	500	0	500	61.0	61.0	30500	30500
Hidalgo	14000	0	14000	13000	0	13000	96.0	96.0	1248000	1248000
Luna	19000	0	19000	16000	0	16000	95.0	95.0	1520000	1520000
Sierra	300	0	300	150	0	150	75.0	75.0	11250	11250
Socorro	800	0	800	600	0	600	85.0	85.0	51000	51000
SOUTHWEST DISTRICT	35550	50	35600	30250	0	30250	94.6	94.6	2860750	2860750
Chaves	17000	0	17000	8000	0	8000	77.0	77.0	616000	616000
Dona Ana	3400	100	3500	2400	0	2400	70.0	70.0	168000	168000
Eddy	3200	0	3200	1000	0	1000	82.0	82.0	82000	82000
Lea	41000	9000	50000	33000	4000	37000	68.0	20.0	62.8	2244000	80000	2324000
Lincoln	50	0	50	0	0	0
Otero	1450	0	1450	480	0	480	67.0	67.0	32160	32160
SOUTHEAST DISTRICT	66100	9100	75200	44880	4000	48880	70.0	20.0	65.9	3142160	80000	3222160
STATE	217600	206400	424000	180800	133200	314000	89.1	22.9	61.0	16109000	3045000	19154000

New Mexico Agricultural Statistics

^{1/} Preliminary

WINTER WHEAT: ACREAGE, YIELD, AND PRODUCTION BY COUNTIES, IRRIGATED AND NON-IRRIGATED, 1966

County	Acres planted			Acres harvested			Yield per harvested acre			Production		
	Irrig.	Non-Irrig.	Total	Irrig.	Non-Irrig.	Total	Irrig.	Non-Irrig.	Total	Irrig.	Non-Irrig.	Total
	Acres	Acres	Acres	Acres	Acres	Acres	Bushels	Bushels	Bushels	Bushels	Bushels	Bushels
Bernalillo	800	400	1200	150	150	300	38.0	10.0	24.0	5700	1500	7200
McKinley	300	200	500	250	150	400	25.0	10.0	19.4	6250	1500	7750
Rio Arriba	400	4100	4500	300	3500	3800	25.0	16.0	16.7	7500	56000	63500
Sandoval	300	150	450	180	20	200	33.0	10.0	30.7	5940	200	6140
San Juan	300	50	350	150	0	150	35.0	35.0	5250	5250
Santa Fe	800	1200	2000	600	900	1500	40.0	15.0	25.0	24000	13500	37500
Taos	450	100	550	300	50	350	24.0	10.0	22.0	7200	500	7700
Valencia	1200	800	2000	900	100	1000	40.0	15.0	37.5	36000	1500	37500
NORTHWEST DISTRICT	4550	7000	11550	2830	4870	7700	34.6	15.3	22.4	97840	74700	172540
Colfax	2500	2500	5000	1200	1300	2500	37.0	15.0	25.6	44400	19500	63900
Curry	65000	85000	150000	64000	23000	87000	54.0	8.0	41.8	3456000	184000	3640000
De Baca	200	0	200	100	0	100	40.0	40.0	4000	4000
Guadalupe	100	0	100	0	0	0
Harding	500	8500	9000	500	3300	3800	25.0	9.0	11.1	12500	29700	42200
Mora	300	700	1000	150	50	200	18.0	10.0	16.0	2700	500	3200
Quay	7000	66000	73000	3000	20000	23000	40.0	10.0	13.9	120000	200000	320000
Roosevelt	5000	37000	42000	4500	12500	17000	45.0	8.3	18.0	202500	103750	306250
San Miguel	600	400	1000	400	100	500	25.0	12.0	22.4	10000	1200	11200
Torrance	500	4300	4800	450	1050	1500	40.0	6.0	16.2	18000	6300	24300
Union	1800	2600	4400	900	1600	2500	45.0	14.5	25.5	40500	23200	63700
NORTHEAST DISTRICT	83500	207000	290500	75200	62900	138100	52.0	9.0	32.4	3910600	568150	4478750
Catron	50	50	100	40	0	40	30.5	30.5	1220	1220
Grant	600	300	900	100	0	100	38.0	38.0	3800	3800
Hidalgo	400	0	400	400	0	400	56.0	56.0	22400	22400
Luna	250	0	250	30	0	30	30.0	30.0	900	900
Sierra	20	0	20	0	0	0
Socorro	300	0	300	200	0	200	40.0	40.0	8000	8000
SOUTHWEST DISTRICT	1620	350	1970	770	0	770	47.2	47.2	36320	36320
Chaves	500	0	500	250	0	250	35.0	35.0	8750	8750
Dona Ana	30	0	30	0	0	0
Eddy	50	0	50	10	0	10	40.0	40.0	400	400
Lea	220	20	240	70	0	70	60.0	60.0	4200	4200
Lincoln	50	0	50	0	0	0
Otero	80	30	110	70	30	100	37.0	15.0	30.4	2590	450	3040
SOUTHEAST DISTRICT	930	50	980	400	30	430	39.8	15.0	38.1	15940	450	16390
STATE	90600	214400	305000	79200	67800	147000	51.3	9.5	32.0	4060700	643300	4704000

WINTER WHEAT: ACREAGE, YIELD, AND PRODUCTION BY COUNTIES, IRRIGATED AND NON-IRRIGATED, 1967 ^{1/}

County	Acres planted			Acres harvested			Yield per harvested acre			Production		
	Irrig.	Non-Irrig.	Total	Irrig.	Non-Irrig.	Total	Irrig.	Non-Irrig.	Total	Irrig.	Non-Irrig.	Total
	Acres	Acres	Acres	Acres	Acres	Acres	Bushels	Bushels	Bushels	Bushels	Bushels	Bushels
Bernalillo	1000	200	1200	250	0	250	30.0	30.0	7500	7500
McKinley	200	300	500	100	250	350	15.0	10.0	11.4	1500	2500	4000
Rio Arriba	200	4900	5100	200	3300	3500	21.0	15.0	15.3	4200	49500	53700
Sandoval	300	200	500	50	100	150	30.0	7.0	14.7	1500	700	2200
San Juan	100	50	150	50	0	50	30.0	30.0	1500	1500
Santa Fe	700	900	1600	500	200	700	40.0	12.0	32.0	20000	2400	22400
Taos	450	100	550	250	50	300	22.0	10.0	20.0	5500	500	6000
Valencia	1500	1000	2500	1100	100	1200	40.0	13.0	37.8	44000	1300	45300
NORTHWEST DISTRICT	4450	7650	12100	2500	4000	6500	27.1	14.2	21.9	85700	56900	142600
Colfax	2000	3000	5000	1300	700	2000	34.0	12.0	26.3	44200	8400	52600
Curry	80000	105000	185000	71000	17000	88000	39.9	10.0	34.1	2832900	170000	3002900
De Baca	400	0	400	250	0	250	37.0	37.0	9250	9250
Guadalupe	100	0	100	0	0	0
Harding	500	10500	11000	400	550	950	25.0	8.0	15.2	10000	4400	14400
Mora	300	700	1000	150	50	200	18.0	8.0	15.5	2700	400	3100
Quay	6300	83700	90000	3300	5400	8700	29.0	6.0	14.7	95700	32400	128100
Roosevelt	6000	44000	50000	4000	21500	25500	29.5	8.0	11.4	118000	172000	290000
San Miguel	600	400	1000	400	100	500	25.0	10.0	22.0	10000	1000	11000
Torrance	500	4500	5000	400	1200	1600	40.0	8.0	16.0	16000	9600	25600
Union	1800	2700	4500	900	1600	2500	40.0	6.0	18.2	36000	9600	45600
NORTHEAST DISTRICT	98500	254500	353000	82100	48100	130200	38.7	8.5	27.5	3174750	407800	3582550
Catron	30	50	80	0	0	0
Grant	650	350	1000	100	0	100	35.0	35.0	3500	3500
Hidalgo	2500	0	2500	2400	0	2400	62.0	62.0	148800	148800
Luna	1300	0	1300	1100	0	1100	41.0	41.0	45100	45100
Sierra	20	0	20	0	0	0
Socorro	300	0	300	200	0	200	40.0	40.0	8000	8000
SOUTHWEST DISTRICT	4800	400	5200	3800	0	3800	54.1	54.1	205400	205400
Chaves	900	0	900	300	0	300	32.0	32.0	9600	9600
Dona Ana	60	0	60	50	0	50	40.0	40.0	2000	2000
Eddy	410	0	410	120	0	120	40.0	40.0	4800	4800
Lea	190	30	220	0	0	0
Lincoln	50	0	50	0	0	0
Otero	40	20	60	30	0	30	35.0	35.0	1050	1050
SOUTHEAST DISTRICT	1650	50	1700	500	0	500	34.9	34.9	17450	17450
STATE	109400	262600	372000	88900	52100	141000	39.2	8.9	28.0	3483300	464700	3948000

^{1/} Preliminary

New Mexico Agricultural Statistics

ALL HAY: ACREAGE, YIELD, AND PRODUCTION BY COUNTIES, 1966 and 1967^{1/}

County	1966			1967 ^{1/}		
	Acres harvested	Yield per acre	Production	Acres harvested	Yield per acre	Production
	Acres	Tons	Tons	Acres	Tons	Tons
Bernalillo	7200	3.2	23040	7500	3.3	24750
McKinley	1600	1.5	2400	1600	1.8	2880
Rio Arriba	10700	1.4	14980	10500	1.5	15750
Sandoval	7500	2.0	15150	7800	2.0	15600
San Juan	14400	3.0	43200	15000	3.3	49500
Santa Fe	4500	3.2	14400	4400	2.2	9680
Taos	8000	1.5	12000	7700	1.5	11550
Valencia	15000	3.3	50000	14600	3.8	55480
NORTHWEST DISTRICT	68900	2.54	175170	69100	2.68	185190
Colfax	16000	1.2	19200	16500	1.2	19800
Curry	5000	2.2	11000	5300	2.2	11660
De Baca	4000	3.1	12400	4300	3.3	14190
Guadalupe	3000	2.1	6300	2800	2.2	6160
Harding	6000	1.1	6600	6400	1.2	7680
Mora	13300	1.3	17290	13800	1.1	15180
Quay	6800	3.4	23120	7300	4.0	29200
Roosevelt	4700	3.6	16920	5100	3.6	18360
San Miguel	5600	1.2	6720	5300	0.9	4770
Torrance	4200	3.0	12600	4200	3.0	12600
Union	8000	1.1	8800	8700	1.0	8700
NORTHEAST DISTRICT	76600	1.84	140950	79700	1.86	148300
Catron	500	3.8	1900	600	2.8	1680
Grant	3400	3.4	11560	3500	3.0	10500
Hidalgo	2800	4.8	13440	3200	4.8	15360
Luna	2300	4.6	10580	2500	4.2	10500
Sierra	1800	4.5	8100	2100	4.8	10080
Socorro	7000	5.0	35000	7500	5.2	39110
SOUTHWEST DISTRICT	17800	4.53	80580	19400	4.50	87230
Chaves	41600	6.3	262010	40800	6.2	252960
Dona Ana	14400	4.4	63360	14000	4.5	63000
Eddy	31700	5.3	168010	33600	5.4	181440
Lea	8400	3.2	26880	8800	3.4	29920
Lincoln	2200	3.8	8360	2400	3.3	7920
Otero	2400	3.2	7680	2200	3.2	7040
SOUTHEAST DISTRICT	100700	5.33	536300	101800	5.33	542280
STATE	264000	3.53	933000	270000	3.57	963000

^{1/} Preliminary

New Mexico Agricultural Statistics

ALFALFA HAY: ACREAGE, YIELD, AND PRODUCTION BY COUNTIES, PRACTICALLY ALL IRRIGATED, 1966 and 1967^{1/}

County	1966			1967 ^{1/}		
	Acres harvested	Yield per acre	Production	Acres harvested	Yield per acre	Production
	Acres	Tons	Tons	Acres	Tons	Tons
Bernalillo	6200	3.5	21700	6400	3.6	23040
McKinley	1000	1.9	1900	1000	2.0	2000
Rio Arriba	6000	2.0	12000	5800	1.6	9280
Sandoval	4200	2.5	10500	4500	2.8	12600
San Juan	12100	3.3	39930	13000	3.5	45500
Santa Fe	4100	3.3	13530	4000	2.2	8800
Taos	6300	1.8	11340	6200	1.7	10540
Valencia	13300	3.7	49210	12800	4.0	51200
NORTHWEST DISTRICT	53200	3.01	160110	53700	3.03	162960
Colfax	5800	2.1	12180	5900	2.3	13570
Curry	1000	4.0	4000	1100	5.0	5500
De Baca	2800	3.4	9520	3000	4.4	13200
Guadalupe	1000	2.5	2500	800	3.0	2400
Harding	600	2.2	1320	600	2.2	1320
Mora	2900	1.6	4640	3000	1.8	5400
Quay	5600	3.7	20720	6000	4.2	25240
Roosevelt	3200	4.1	13120	3500	4.4	15400
San Miguel	2800	1.5	4200	2600	1.2	3120
Torrance	3400	3.2	10880	3100	3.6	11160
Union	2300	2.4	5520	2300	2.8	6440
NORTHEAST DISTRICT	31400	2.82	88600	31900	3.22	102750
Catron	400	4.0	1600	400	3.0	1200
Grant	2200	4.2	9240	2300	3.4	7820
Hidalgo	2100	5.0	10500	2800	5.0	14000
Luna	1800	4.8	8640	1900	4.5	8550
Sierra	1400	4.7	6580	1500	5.3	7950
Socorro	6100	5.4	32940	6500	5.5	35750
SOUTHWEST DISTRICT	14000	4.96	69500	15400	4.89	75270
Chaves	39600	6.5	257400	38400	6.5	249600
Dona Ana	13000	4.5	58500	12400	5.0	62000
Eddy	30500	5.5	167840	31700	5.6	177520
Lea	6100	4.1	25010	6500	4.2	27300
Lincoln	2000	4.0	8000	2000	3.4	6800
Otero	1200	4.2	5040	1000	3.8	3800
SOUTHEAST DISTRICT	92400	5.65	521790	92000	5.73	527020
STATE	191000	4.40	840000	193000	4.50	868000

^{1/} PreliminaryALFALFA SEED: ACREAGE, YIELD, AND PRODUCTION BY COUNTIES, ALL IRRIGATED, 1966 and 1967^{1/}

County	1966			1967 ^{1/}		
	Acres harvested	Yield per acre	Production	Acres harvested	Yield per acre	Production
	Acres	Pounds	Pounds	Acres	Pounds	Pounds
NORTHEAST DISTRICT	50	145	7300	70	140	9800
Chaves	1650	155	256700	1210	190	229200
Dona Ana	500	110	55000	250	260	65000
Eddy	1600	145	232000	1070	190	203000
SOUTHEAST DISTRICT	3750	145	543700	2530	195	497200
STATE	3800	145	551000	2600	195	507000

^{1/} Preliminary

New Mexico Agricultural Statistics

BROOMCORN: ACREAGE, YIELD, AND PRODUCTION, BY COUNTIES, IRRIGATED AND NON-IRRIGATED, 1966 1/2

County	Acres planted			Acres harvested			Yield per harvested acre			Production		
	Planted	Irrig.		Total	Irrig.	Non-Irrig.		Total	Irrig.	Non-Irrig.		Total
		Acres	Acres			Acres	Pounds			Pounds	Tons	
Curry	750	50	600	650	320	140	155	8	42	50		
Custalupa	150	0	100	100	120	120	120	..	6	6		
Harding	550	50	350	400	400	160	190	10	28	38		
Quay	11950	3300	7900	11200	483	180	270	800	711	1511		
Roosevelt	16700	6050	10000	14050	570	200	340	1714	1000	2714		
Union	1900	150	1450	1600	480	200	225	36	145	181		
NORTHEAST DISTRICT	32000	9600	20400	30000	535	190	300	2568	1932	4500		
STATE	32000	9600	20400	30000	535	190	300	2568	1932	4500		

1/ Revised

BROOMCORN: ACREAGE, YIELD, AND PRODUCTION, BY COUNTIES, IRRIGATED AND NON-IRRIGATED, 1967 1/2

County	Acres harvested			Yield per harvested acre			Production					
	Planted	Irrig.		Total	Irrig.	Non-Irrig.		Total	Irrig.	Non-Irrig.		Total
		Acres	Acres			Acres	Pounds			Pounds	Tons	
Curry	800	50	650	700	360	120	140	9	39	48		
Custalupa	150	0	140	140	..	100	100	..	7	7		
Harding	600	50	510	560	320	110	130	8	28	36		
Quay	11550	2800	6400	9200	450	155	245	630	495	1125		
Roosevelt	14000	5000	8000	13000	470	150	275	1175	600	1775		
Union	1900	100	1300	1400	360	140	155	18	91	109		
NORTHEAST DISTRICT	29000	8000	17000	25000	460	150	250	1840	1260	3100		
STATE	29000	8000	17000	25000	460	150	250	1840	1260	3100		

1/ Preliminary

New Mexico Agricultural Statistics

POTATOES: ACREAGE, YIELD, AND PRODUCTION, BY COUNTIES, ALL IRRIGATED, 1966 and 1967

County	1966				1967 1/2			
	Acres		Yield per harvested acre	Production	Acres		Yield per harvested acre	Production
	Planted	Harvested			Planted	Harvested		
Santa Fe	700	650	200	130000	600	550	180	99000
Taos	100	100	115	11500	0
Valencia	200	200	160	32000	100	100	170	17000
NORTHWEST DISTRICT	1000	950	183	173500	700	650	178	116000
Torrance	1300	1250	190	237500	1650	1530	190	291000
Other Counties	100	100	150	15000	450	420	269	113000
NORTHEAST DISTRICT	1400	1350	187	252500	2100	1950	207	404000
STATE	2400	2300	185	426000	2800	2600	200	520000

1/ Preliminary

SWEETPOTATOES: ACREAGE, YIELD AND PRODUCTION, BY COUNTIES, ALL IRRIGATED, 1966 and 1967

County	1966				1967 1/2			
	Acres		Yield per harvested acre	Production	Acres		Yield per harvested acre	Production
	Planted	Harvested			Planted	Harvested		
Roosevelt	650	550	95	52250	370	370	90	33000
All other areas	50	50	95	4750	30	30	90	3000
STATE	700	600	95	57000	400	400	90	36000

1/ Preliminary

PEANUTS PICKED AND THRESHED: ACREAGE, YIELD, AND PRODUCTION BY COUNTIES, ALL IRRIGATED, 1966 and 1967

County	1966			1967		
	Acres harvested	Yield per acre	Production	Acres harvested	Yield per acre	Production
Curry	10	2300	23000	10	2100	21000
Quay	60	1333	80000	75	1013	76000
Roosevelt	7880	2111	16638000	7700	2019	15543000
NORTHEAST DISTRICT	7950	2106	16741000	7785	2009	15640000
Lea	250	1260	315000	215	1300	280000
SOUTHEAST DISTRICT	250	1260	315000	215	1300	280000
STATE	8200	2080	17056000	8000	1990	15920000

ALL DRY BEANS: ACREAGE, YIELD, AND PRODUCTION BY COUNTIES, IRRIGATED AND NON-IRRIGATED, 1966

County	Acres planted all purposes	Acres harvested			Yield per harvested acre			Production		
		Irrig.	Non-Irrig.	Total	Irrig.	Non-Irrig.	Total	Irrig.	Non-Irrig.	Total
Acres	Acres	Acres	Acres	Pounds	Pounds	Pounds				
Bernalillo	500	0	500	500	...	150	150	...	750	750
McKinley	1700	0	1700	1700	...	150	150	...	2550	2550
Rio Arriba	100	20	80	100	400	200	240	80	160	240
Sandoval	50	0	50	50	...	200	200	...	100	100
San Juan	250	250	0	250	700	...	700	1750	...	1750
Santa Fe	100	0	100	100	...	200	200	...	200	200
Taos	70	60	10	70	600	300	555	360	30	390
Valencia	220	120	100	220	600	150	395	720	150	870
NORTHWEST DISTRICT	2990	450	2540	2990	645	155	230	2910	3940	6850
Colfax	170	0	170	170	...	200	200	...	340	340
Curry	280	280	0	280	700	...	700	1960	...	1960
Guadalupe	50	50	0	50	600	...	600	300	...	300
Mora	100	0	100	100	...	220	220	...	220	220
Quay	120	20	100	120	450	50	115	90	50	140
Roosevelt	40	20	20	40	400	100	250	80	20	100
San Miguel	110	90	20	110	500	200	445	450	40	490
Torrance	1400	1100	300	1400	1100	200	905	12100	600	12700
NORTHEAST DISTRICT	2270	1560	710	2270	960	180	715	14980	1270	16250
Catron	50	0	50	50	...	300	300	...	150	150
Hidalgo	100	100	0	100	800	...	800	800	...	800
Luna	1410	1410	0	1410	1100	...	1100	15510	...	15510
Socorro	100	100	0	100	600	...	600	600	...	600
SOUTHWEST DISTRICT	1660	1610	50	1660	1050	300	1030	16910	150	17060
Chaves	20	20	0	20	700	...	700	140	...	140
Dona Ana	20	20	0	20	1100	...	1100	220	...	220
Lea	40	40	0	40	1200	...	1200	480	...	480
SOUTHEAST DISTRICT	80	80	0	80	1050	...	1050	840	...	840
STATE	7000	3700	3300	7000	965	160	580	35640	5360	41000

New Mexico Agricultural Statistics

ALL DRY BEANS: ACREAGE, YIELD, AND PRODUCTION BY COUNTIES, IRRIGATED AND NON-IRRIGATED, 1967 ^{1/}

County	Acres planted all purposes	Acres harvested			Yield per harvested acre			Production		
		Irrig.	Non-Irrig.	Total	Irrig.	Non-Irrig.	Total	Irrig.	Non-Irrig.	Total
Acres	Acres	Acres	Acres	Pounds	Pounds	Pounds				
Bernalillo	200	0	180	180	150	150	270	270
McKinley	1600	0	1000	1000	140	140	1400	1400
Rio Arriba	50	10	40	50	450	200	250	45	80	125
Sandoval	20	0	20	20	200	200	40	40
San Juan	250	210	0	210	650	650	1365	1365
Santa Fe	100	0	90	90	180	180	162	162
Taos	50	30	20	50	600	220	448	180	44	224
Valencia	100	40	50	90	700	200	422	280	100	380
NORTHWEST DISTRICT	2370	290	1400	1690	645	150	235	1870	2096	3966
Colfax	150	0	130	130	180	180	234	234
Curry	100	100	0	100	800	800	800	800
De Baca	20	20	0	20	600	600	120	120
Mora	100	0	80	80	190	190	152	152
Quay	180	20	140	160	700	190	255	140	266	406
Roosevelt	50	50	0	50	900	900	450	450
San Miguel	110	20	80	100	600	190	270	120	152	272
Torrance	1100	600	300	900	1000	200	730	6000	600	6600
NORTHEAST DISTRICT	1810	810	730	1540	942	192	587	7630	1404	9034
Catron	20	0	20	20	200	200	40	40
Hidalgo	50	50	0	50	700	700	350	350
Luna	550	520	0	520	1000	1000	5200	5200
Socorro	100	90	0	90	600	600	540	540
SOUTHWEST DISTRICT	720	660	20	680	925	200	900	6090	40	6130
Chaves	20	20	0	20	700	700	140	140
Dona Ana	20	20	0	20	900	900	180	180
Lea	60	50	0	50	1100	1100	550	550
SOUTHEAST DISTRICT	100	90	0	90	965	...	965	870	...	870
STATE	5000	1850	2150	4000	890	165	500	16460	3540	20000

^{1/} Preliminary

New Mexico Agricultural Statistics

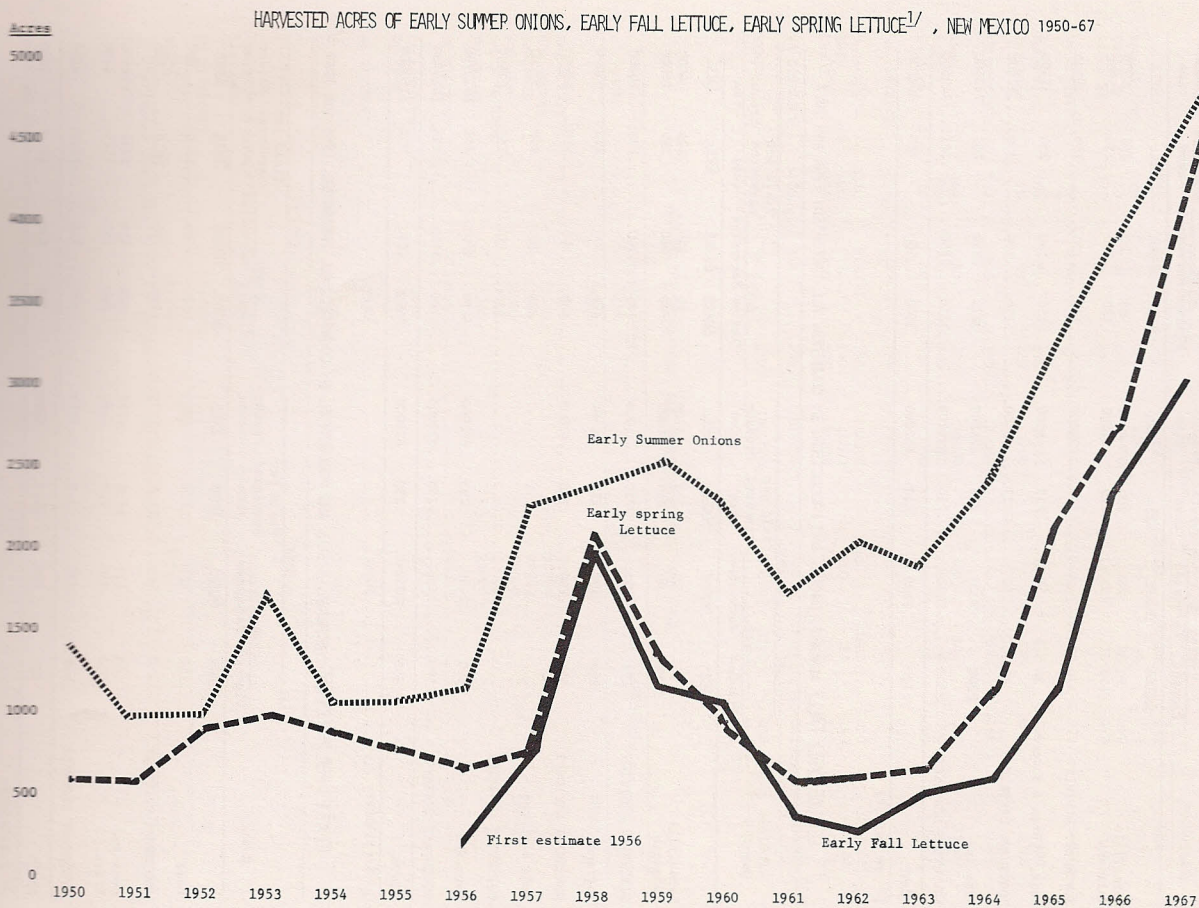
ALL DRY BEANS: ACREAGE, YIELD, AND PRODUCTION BY COUNTIES, IRRIGATED AND NON-IRRIGATED, 1967

County	Acres planted all purposes	Acres harvested			Yield per harvested acre			Production		
		Irrig.	Non-Irrig.	Total	Irrig.	Non-Irrig.	Total	Irrig.	Non-Irrig.	Total
Acres	Acres	Acres	Acres	Pounds	Pounds	Pounds				
Bernalillo	200	0	180	180	150	150	270	270
McKinley	1600	0	1000	1000	140	140	1400	1400
Rio Arriba	50	10	40	50	450	200	250	45	80	125
Sandoval	20	0	20	20	200	200	40	40
San Juan	250	210	0	210	650	650	1365	1365
Santa Fe	100	0	90	90	180	180	162	162
Taos	50	30	20	50	600	220	448	180	44	224
Valencia	100	40	50	90	700	200	422	280	100	380
NORTHWEST DISTRICT	2370	290	1400	1690	645	150	235	1870	2096	3966
Colfax	150	0	130	130	180	180	234	234
Curry	100	100	0	100	800	800	800	800
De Baca	20	20	0	20	600	600	120	120
Mora	100	0	80	80	190	190	152	152
Quay	180	20	140	160	700	190	255	140	266	406
Roosevelt	50	50	0	50	900	900	450	450
San Miguel	110	20	80	100	600	190	270	120	152	272
Torrance	1100	600	300	900	1000	200	730	6000	600	6600
NORTHEAST DISTRICT	1810	810	730	1540	942	192	587	7630	1404	9034
Catron	20	0	20	20	200	200	40	40
Hidalgo	50	50	0	50	700	700	350	350
Luna	550	520	0	520	1000	1000	5200	5200
Socorro	100	90	0	90	600	600	540	540
SOUTHWEST DISTRICT	720	660	20	680	925	200	900	6090	40	6130
Chaves	20	20	0	20	700	700	140	140
Dona Ana	20	20	0	20	900	900	180	180
Lea	60	50	0	50	1100	1100	550	550
SOUTHEAST DISTRICT	100	90	0	90	965	965	870	870
STATE	5000	1850	2150	4000	890	165	500	16460	3540	20000

ALL DRY BEANS: ACREAGE, YIELD, AND PRODUCTION BY COUNTIES, IRRIGATED AND NON-IRRIGATED, 1968 1/

County	Acres planted all purposes	Acres harvested			Yield per harvested acre			Production		
		Irrig.	Non-Irrig.	Total	Irrig.	Non-Irrig.	Total	Irrig.	Non-Irrig.	Total
Acres	Acres	Acres	Acres	Pounds	Pounds	Pounds				
Bernalillo	100	20	70	90	600	140	240	120	98	218
McKinley	1200	0	500	500	200	200	1000	1000
Rio Arriba	40	10	30	40	240	200	210	24	60	84
Sandoval	20	0	20	20	200	200	40	40
San Juan	200	200	0	200	700	700	1400	1400
Santa Fe	70	0	70	70	180	180	126	126
Taos	100	80	0	80	500	500	400	400
Valencia	20	20	0	20	500	500	100	100
NORTHWEST DISTRICT	1750	330	690	1020	620	190	330	2044	1324	3368
Colfax	100	0	80	80	180	180	144	144
Curry	80	80	0	80	800	800	640	640
De Baca	20	20	0	20	600	600	120	120
Guadalupe	20	20	0	20	600	600	120	120
Harding	100	0	100	100	190	190	190	190
Mora	110	20	0	20	500	500	100	100
Quay	130	100	10	110	340	200	330	340	20	360
Roosevelt	460	150	310	460	800	130	350	1200	403	1603
San Miguel	100	20	80	100	500	200	260	100	160	260
Torrance	1000	250	650	900	640	200	320	1600	1300	2900
NORTHEAST DISTRICT	2120	660	1230	1890	640	180	340	4220	2217	6437
Catron	30	0	10	10	250	250	25	25
Hidalgo	250	250	0	250	1000	1000	2500	2500
Luna	510	500	0	500	1050	1050	5250	5250
Socorro	90	90	0	90	600	600	540	540
SOUTHWEST DISTRICT	880	840	10	850	990	250	980	8290	25	8315
Chaves	70	70	0	70	1500	1500	1050	1050
Dona Ana	20	20	0	20	900	900	180	180
Lea	160	150	0	150	1100	1100	1650	1650
SOUTHEAST DISTRICT	250	240	0	240	1200	1200	2880	2880
STATE	5000	2070	1930	4000	840	185	525	17434	3566	21000

1/ Preliminary



New Mexico Agricultural Statistics

LETTUCE-EARLY SPRING: ACREAGE, YIELD, AND PRODUCTION, BY COUNTIES, ALL IRRIGATED, 1966 and 1967^{1/}

County	1966				1967 ^{1/}			
	Acres		Yield per	Production	Acres		Yield per	Production
	Planted	Harvested	acre		Planted	Harvested	acre	
Acres	Acres	Cwt.	Cwt.	Acres	Acres	Cwt.	Cwt.	
Bernalillo	20	20	200	4000	20	20	250	5000
Valencia	150	130	210	27300	120	100	250	25000
NORTHWEST DISTRICT	170	150	209	31300	140	120	250	30000
Luna, Sierra & Socorro	30	30	217	6500	150	130	250	32500
SOUTHWEST DISTRICT	30	30	217	6500	150	130	250	32500
Dona Ana	2300	2020	210	424200	3210	2850	261	743500
SOUTHWEST DISTRICT	2300	2020	210	424200	3210	2850	261	743500
STATE	2500	2200	210	462000	3500	3100	260	806000

^{1/} PreliminaryLETTUCE-EARLY FALL: ACREAGE, YIELD, AND PRODUCTION, BY COUNTIES, ALL IRRIGATED, 1966 and 1967^{1/}

County	1966				1967 ^{1/}			
	Acres		Yield per	Production	Acres		Yield per	Production
	Planted	Harvested	acre		Planted	Harvested	acre	
Acres	Acres	Cwt.	Cwt.	Acres	Acres	Cwt.	Cwt.	
Bernalillo	20	20	210	4200	20	20	200	4000
Valencia	80	80	210	16800	80	80	210	16800
NORTHWEST DISTRICT	100	100	210	21000	100	100	208	20800
Torrance	200	200	210	42000	400	300	210	63000
NORTHEAST DISTRICT	200	200	210	42000	400	300	210	63000
Luna & Sierra	220	210	250	52500
SOUTHWEST DISTRICT	220	210	250	52500
Dona Ana	2500	2400	255	612000	4280	3990	254	1013700
SOUTHEAST DISTRICT	2500	2400	255	612000	4280	3990	254	1013700
STATE	2800	2700	250	675000	5000	4600	250	1150000

^{1/} PreliminaryTOMATOES FOR PROCESSING: ACREAGE, YIELD, AND PRODUCTION, BY COUNTIES, ALL IRRIGATED, 1966 and 1967^{1/}

County	1966				1967 ^{1/}			
	Acres		Yield per	Production	Acres		Yield per	Production
	Planted	Harvested	acre		Planted	Harvested	acre	
Acres	Acres	Tons	Tons	Acres	Acres	Tons	Tons	
Luna	150	125	11.0	1375	100	90	10.0	890
SOUTHWEST DISTRICT	150	125	11.0	1375	100	90	10.0	890
Dona Ana	150	125	11.0	1375	400	350	13.0	4550
Otero	350	250	9.0	2250	200	160	11.0	1760
SOUTHEAST DISTRICT	500	375	9.7	3625	600	510	12.4	6310
STATE	650	500	10.0	5000	700	600	12.0	7200

^{1/} Preliminary

New Mexico Agricultural Statistics

ONIONS-EARLY SUMMER: ACREAGE, YIELD AND PRODUCTION, BY COUNTIES, ALL IRRIGATED, 1966 AND 1967

County	1966				1967			
	Acres		Yield per	Production	Acres		Yield per	Production
	Planted	Harvested	acre		Planted	Harvested	acre	
Acres	Acres	CWT	CWT	Acres	Acres	CWT	CWT	
Bernalillo	80	80	260	20800	70	60	275	16500
Santa Fe	20	20	260	5200	20	20	260	5200
Valencia	175	160	250	40000	150	130	270	35100
NW DISTRICT	275	260	254	66000	240	210	270	56800
Roosevelt	100	90	190	17100	120	110	260	28600
Torrance	10	10	220	2200	30	30	290	8700
NE DISTRICT	110	100	193	19300	150	140	266	37300
Luna	160	150	300	45000	120	110	320	35200
Sierra	25	25	290	7250	50	40	300	12000
Socorro	10	10	310	3100	40	40	400	16000
SW DISTRICT	195	185	299	55350	210	190	333	63200
Dona Ana	3370	3130	250	782500	4000	3800	320	1216000
Eddy	100	95	240	22800	100	90	240	21600
Lea	250	230	235	54050	300	270	230	62100
SE DISTRICT	3720	3455	249	859350	4400	4160	312	1299700
STATE	4300	4000	250	1000000	5000	4700	310	1457000

APPLES^{1/}: TREES 1966, AND PRODUCTION 1966 AND 1967

County	Bearing trees	Production	
	1966	1966	1967 ^{2/}
	Number	Busbels	Busbels
Bernalillo	8000	50000	0
Rio Arriba	55500	220000	500
Sandoval	12000	90000	0
San Juan	31000	200000	20000
Santa Fe-Taos	12300	68000	0
Valencia	5300	20000	0
NW DISTRICT	124100	648000	20500
Colfax-Mora-Union	2650	10000	0
De Baca	3300	14000	7500
NE DISTRICT	5950	24000	7500
Grant	8100	30000	500
Sierra-Socorro	1900	7000	0
SW DISTRICT	10000	37000	500
Chaves-Dona Ana-Otero	26950	91000	46500
Lincoln	48000	200000	25000
SW DISTRICT	74950	291000	71500
STATE	215000	1000000	100000

^{1/} Estimates for orchards of 100 or more bearing trees only.^{2/} Preliminary.

New Mexico Agricultural Statistics

Livestock Summary

Cattle and calves on New Mexico farms and ranches totaled 1,346,000 head on January 1, 1968. This represents an increase of 1 percent over last year's figure of 1,333,000 and is the highest number on record since 1944. This increase in inventory numbers is a direct result of the rapid expansion in the feed lot industry. Cattle on feed increased from 140,000 head January 1, 1967 to 185,000 head, January 1, 1968. This is a 32 percent increase and further expansion is expected if past years are any indication of what the future holds. Total value of cattle and calves on farms and ranches was \$183,056,000, up \$435,000 from the previous year as a result of higher numbers.

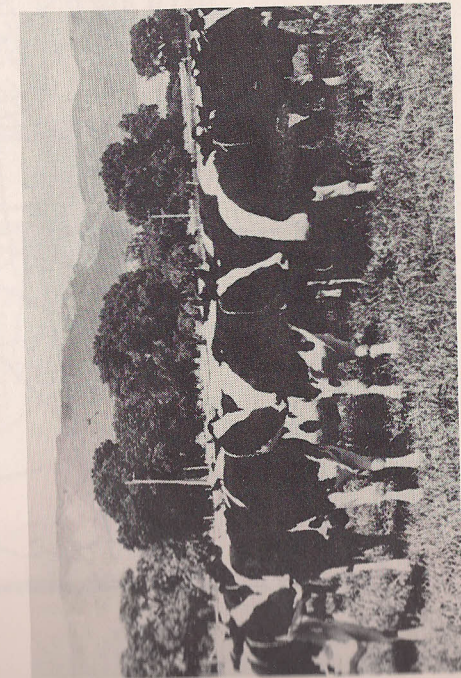
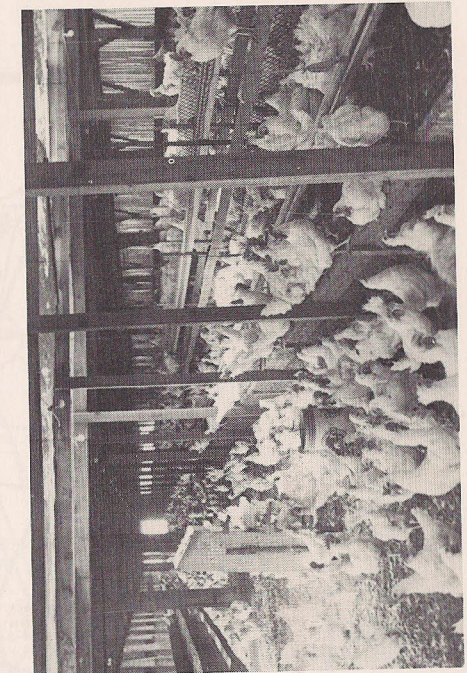
Dairy cattle continued to decline during 1967. The number of milk cows and heifers two years old and over are currently estimated at 40,000 head, January 1, 1968, down 1,000 head from last year. Milk production per cow reached a record high of 8080 pounds in 1967. Total milk production for the State, at 307,000,000 pounds, was 4 percent above 1966 and the largest production on record.

All stock sheep numbered 823,000 head on January 1, 1968, down 7 percent from the year before. The inventory value of \$15,308,000 was down 16 percent largely as a result of lower value per head. Sheep numbers have declined each year since estimates were started in 1881 and this is the lowest number on record. Shorn wool production in New Mexico during 1967 totaled 8,462,000 pounds and was valued at \$3,300,000 excluding incentive payments.

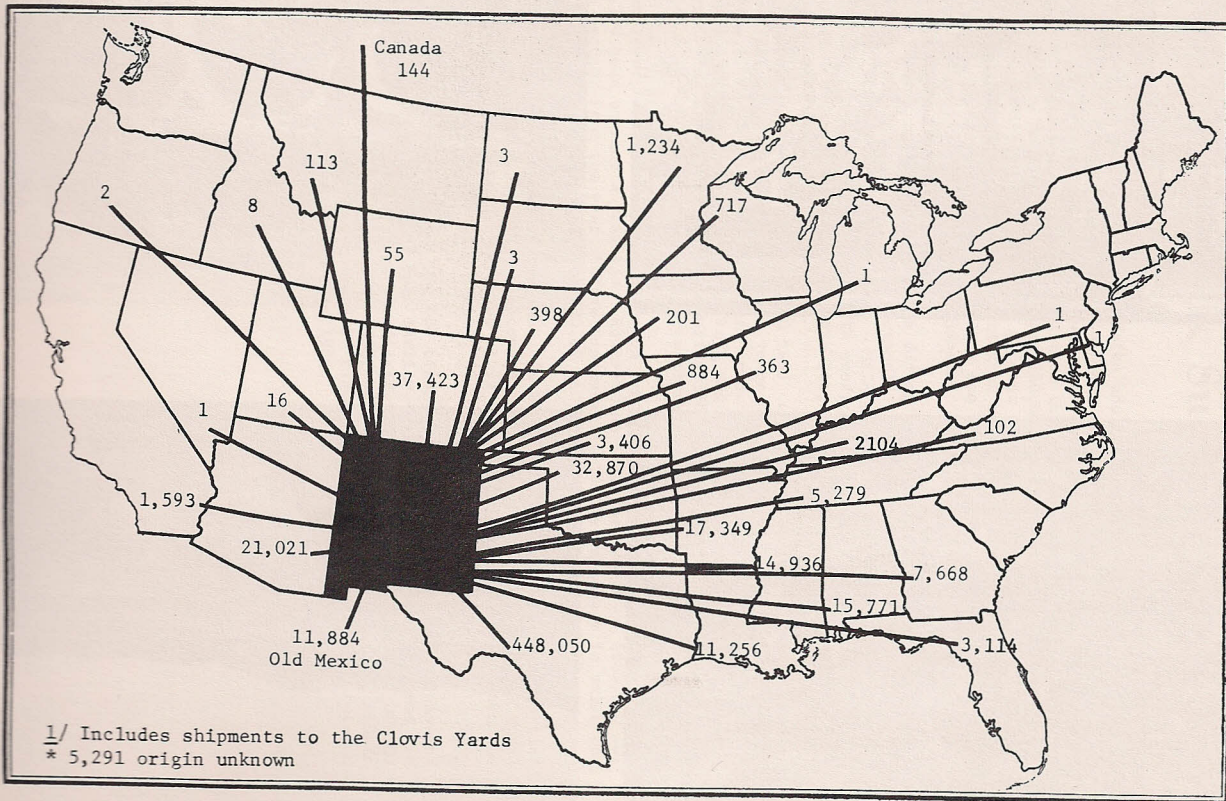
January 1, 1968 number of all hogs on farms totaled 40,000, up slightly from the 38,000 head on hand a year ago. However the inventory value of \$964,000 was down 15 percent from the year before due entirely to the decrease in value per head. Value per head dropped from \$30.00 in 1966 to \$24.10 during 1967.

Commercial production of red meat in New Mexico slaughter plants totaled 173,686,000 pounds during 1967, an increase of 2 percent over 1966. Of the total 1967 production of red meat, beef made up 91 percent; pork, 7 percent; lamb and mutton, 1 percent; and veal, 1 percent.

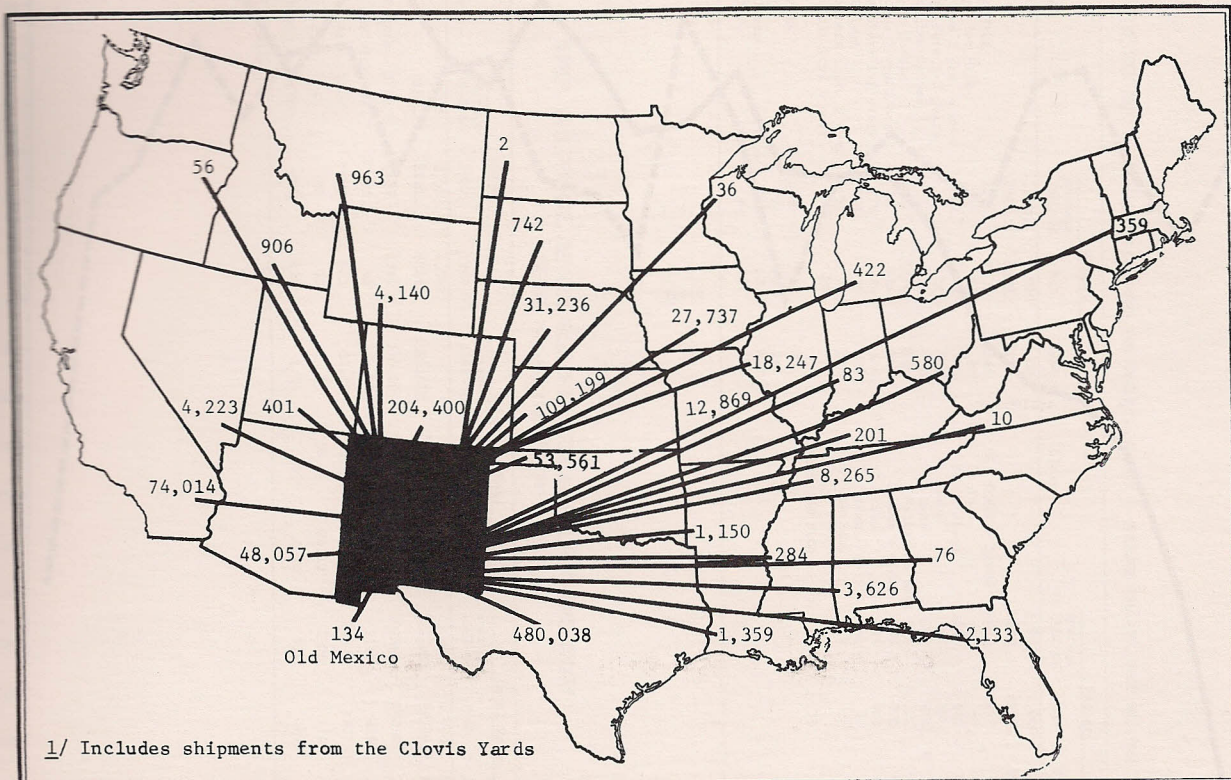
Chickens on farms numbered 934,000 birds on January 1, 1968, an increase of 4 percent from the same date a year earlier. Inventory value of chickens at \$934,000 was up 7 percent from the January 1, 1967 inventory value. Of the 934,000 chickens on farms January 1, 1968, 748,000 of these were hens and pullets of laying age, up somewhat from the 1967 figure. Egg production, in 1967 totaled 145,000,000 eggs, down 5 percent from 1966.



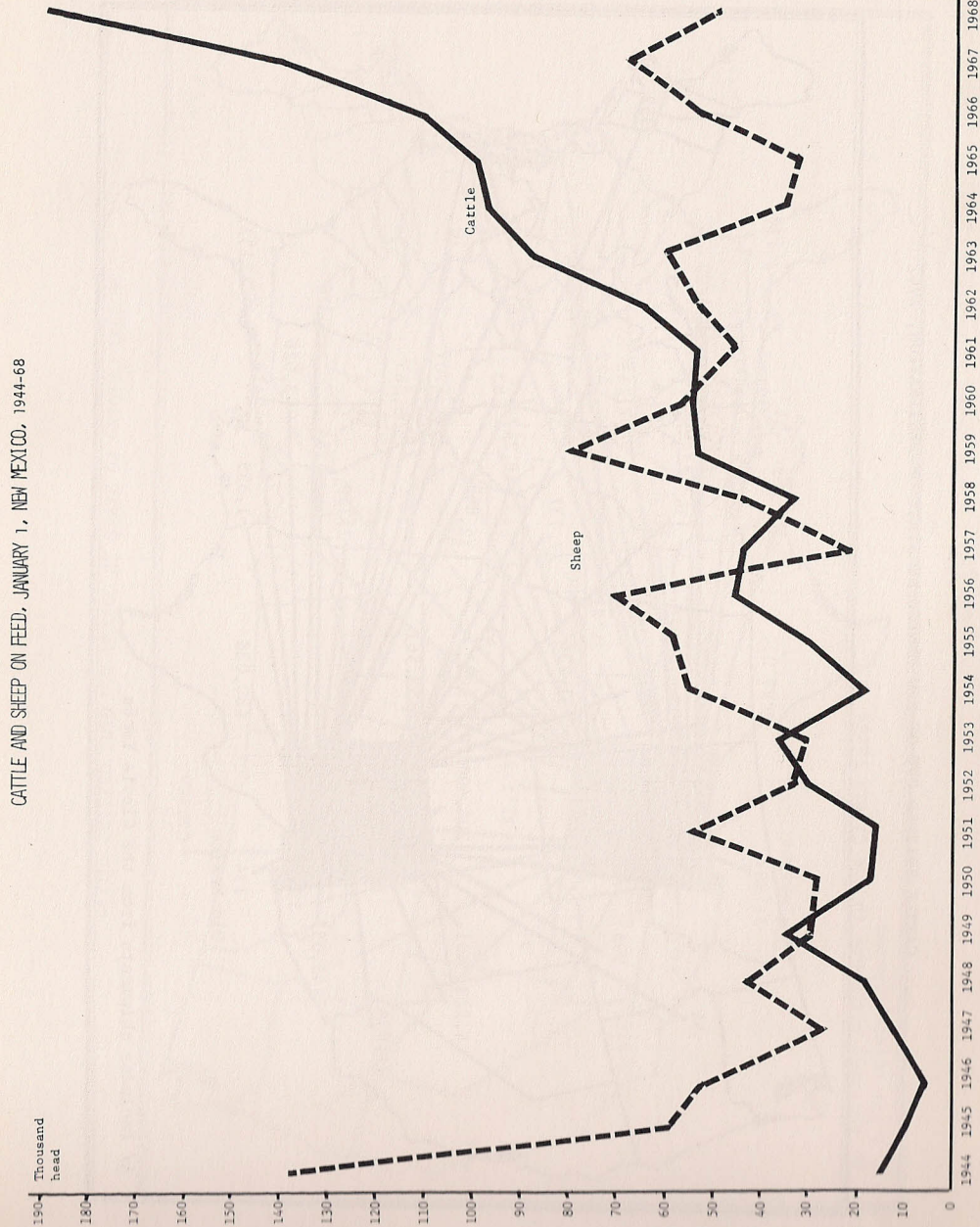
CATTLE SHIPPED INTO NEW MEXICO BY STATE OF ORIGIN, 1967 ^{1/}



CATTLE SHIPPED OUT OF NEW MEXICO BY STATE OF DESTINATION, 1967 ^{1/}



New Mexico Agricultural Statistics



New Mexico Agricultural Statistics

LIVESTOCK AND POULTRY: NUMBER ON FARMS AND RANCHES, JANUARY 1, AVERAGE 1962-66, 1967 AND 1968

Class	Number			Class	Number		
	Average 1962-66	1967	1968 ^{1/}		Average 1962-66	1967	1968 ^{1/}
	1,000 head	1,000 head	1,000 head		1,000 head	1,000 head	1,000 head
ALL CATTLE	1285	1333	1346	ALL SHEEP & LAMBS	1073	955	873
Kept for Milk	65	63	60	On feed	45	68	50
Cows 2 yrs. & over	42	41	40	Stock sheep	1028	887	823
Heifers 1-2 years	11	11	10	Lambs	180	182	155
Heifer Calves	12	11	10	Ewes	155	151	133
Other Cattle	1222	1270	1286	Wethers & Rams	25	31	22
Cows 2 yrs. & over	711	696	696	1 Year & Older	848	705	668
Heifers 1-2 years	119	124	124	Ewes	801	668	635
Calves	300	336	334	Rams	41	32	29
Steers 1 yr. & over	65	90	108	Wethers	6	5	4
Bulls 1 yr. & over	27	24	24	HOGS AND PIGS	44	38	40
CHICKENS	880	899	934				
Hens	392	295	161				
Pullets	448	417	587				
Other	40	187	186				

NUMBER, VALUE PER HEAD, AND TOTAL VALUE OF LIVESTOCK AND POULTRY ON HAND JANUARY 1, AVERAGE 1962-66, 1967 AND 1968

Class	Number			Value Per Head			Total Value		
	Average 1962-66	1967	1968 ^{1/}	Average 1962-66	1967	1968 ^{1/}	Average 1962-66	1967	1968 ^{1/}
	1,000 head	1,000 head	1,000 head	Dollars	Dollars	Dollars	1,000 dollars	1,000 dollars	1,000 dollars
All Cattle	1285	1333	1346	125.00	137.00	136.00	160168	182621	183056
Cows for Milk	42	41	40	182.00	201.00	215.00	7645	8241	8600
Stock Sheep	1028	887	823	14.60	20.60	18.60	14836	18272	15308
Hogs & Pigs	44	38	40	25.00	30.00	24.10	1090	1140	964
Chickens	880	899	934	1.04	.97	1.00	914	872	934

^{1/} Preliminary

LIVESTOCK INVENTORY: NUMBER ON FARMS, BY COUNTIES, JANUARY 1, 1967

County	All Cattle	All cows 2 years And Older	Milk Cows	All Heifers 1-2 Years	Hogs	Sheep	Chickens
	Head	Head	Head	Head	Head	Head	Head
Bernalillo	23000	9800	4100	1900	1100	10000	142000
McKinley	17000	11700	100	1700	800	65000	7000
Rio Arriba	26000	17700	300	3100	420	65100	9000
Sandoval	14000	9600	200	1600	350	10000	4700
San Juan	19000	11600	1200	2200	1040	142100	17300
Santa Fe	26000	11800	300	2100	450	1000	8000
Taos	10000	5900	300	1100	680	39800	10000
Valencia	50000	29400	4800	7000	1150	31900	25000
NORTHWEST DISTRICT	185000	107500	11300	20700	5990	363900	223000
Colfax	65000	34400	500	8100	600	4500	8400
Curry	63000	18700	800	5000	4600	4900	40500
De Baca	32000	16700	400	3900	1250	21300	8500
Guadalupe	31000	19600	200	3000	100	4000	4000
Harding	34000	24600	200	3900	120	1000	5500
Mora	24000	17400	500	1700	140	12700	7000
Quay	72000	43200	1400	4500	3700	3400	23000
Roosevelt	71000	37300	9200	7800	6400	4600	42000
San Miguel	52000	32400	500	4200	300	3500	12000
Torrance	31000	19600	700	3500	210	24700	5200
Union	90000	47200	700	11600	1200	1800	15000
NORTHEAST DISTRICT	565000	311100	15100	57200	18620	122400	171100
Catron	41000	28500	200	3500	150		5000
Grant	55000	33300	500	2800	470		4700
Hidalgo	46000	25500	300	3800	1000		3100
Luna	34000	15700	200	3200	750		31800
Sierra	26000	17600	2600	2300	1050		5700
Socorro	51000	29400	200	4400	230		3600
SOUTHWEST DISTRICT	253000	150000	4000	20000	3650	1/ 25600	53900
Chaves	96000	37600	1100	11900	2150	139700	36000
Dona Ana	27000	13700	3600	4000	1150	3000	312000
Eddy	57000	27500	2600	5000	950	62200	38000
Lea	77000	44200	2400	7600	4300	37600	37000
Lincoln	37000	22600	400	4100	250	169000	9000
Otero	36000	22800	500	4500	940	31600	9000
SOUTHEAST DISTRICT	330000	168400	10600	37100	9740	443100	451000
STATE	1333000	737000	41000	135000	38000	955000	899000

1/ District total includes counties for which separate estimates were not made.

LIVESTOCK INVENTORY: NUMBER ON FARMS, BY COUNTIES, JANUARY 1, 1968 1/

County	All Cattle	All Cows 2 years and Older	Milk Cows	All Heifers 1-2 Years	Hogs	Sheep	Chickens
	Head	Head	Head	Head	Head	Head	Head
Bernalillo	23000	10000	3800	3000	900	9900	149300
McKinley	18000	12300	100	1000	500	63700	2000
Rio Arriba	27000	18000	400	3000	300	61000	25700
Sandoval	14000	9800	200	1400	200	9800	8800
San Juan	19000	12000	1300	2200	1200	125000	11000
Santa Fe	26000	11900	400	2300	300	1000	8400
Taos	11000	6100	200	1000	500	35400	13600
Valencia	51000	30200	4400	6000	1000	28000	14800
NORTHWEST DISTRICT	189000	110300	10800	19900	4900	333800	233600
Colfax	64000	34100	400	7200	480	4400	7400
Curry	70000	17500	700	4200	4400	4700	29600
De Baca	30000	15600	400	2800	1240	21100	4900
Guadalupe	30000	19200	200	3100	120	35000	4800
Harding	32000	24200	300	3800	140	1000	4700
Mora	23000	17200	600	1600	160	12500	10000
Quay	74000	43000	1100	4500	3800	3400	16700
Roosevelt	73000	38400	9200	8400	6600	4400	27200
San Miguel	53000	33000	400	3800	200	3700	27600
Torrance	27000	18200	700	3200	400	24400	6300
Union	96000	46000	600	12000	950	1700	11500
NORTHEAST DISTRICT	572000	306400	14600	54600	18490	116300	150700
Catron	38000	28000	300	3300	100		5800
Grant	56000	34200	400	4300	400		5100
Hidalgo	42000	24200	300	3400	3000		5700
Luna	36000	16000	300	6500	1000		5600
Sierr	27000	18000	2800	3100	1500		4200
Socorro	50000	30100	200	4200	200		6900
SOUTHWEST DISTRICT	249000	150500	4300	24800	6200	2/ 16000	33300
Chaves	112000	30000	900	10800	2050	130000	25500
Dona Ana	28000	15000	3700	3800	2000	2800	437000
Eddy	54000	33100	2400	5700	960	54600	11300
Lea	75000	44500	2300	7200	4150	35000	29700
Lincoln	34000	23200	400	3400	270	159000	7600
Otero	33000	23000	600	3800	980	25500	5300
SOUTHEAST DISTRICT	336000	168800	10300	34700	10410	406900	516400
STATE	1346000	736000	40000	134000	40000	873000	934000

1/ Preliminary

2/ District total includes counties for which separate estimates were not made.

LIVESTOCK: INVENTORY NUMBERS, BIRTHS, AND DISPOSITION, 1965, 1966 and 1967

CATTLE AND CALVES

Year	On hand January 1		Calves born		Inshipments 1,000 head	Marketings		Farm slaughter		Deaths	
	All cattle and calves	All cows 2 years and older	Number	As percentage of cows 2 yrs. and older 1/		Cattle	Calves	Cattle	Calves	Cattle	Calves
	1,000 head	1,000 head	1,000 head	Percent		1,000 head	1,000 head	1,000 head	1,000 head	1,000 head	1,000 head
1965	1269	750	630	84	446	707	260	5	6	19	41
1966	1307	750	645	86	376	694	243	3	2	15	38
1967	1333	737	649	88	525	834	262	4	3	18	40

SHEEP AND LAMBS

Year	On hand January 1 1,000 head	Lambs saved		Inshipments		Marketings 2/		Farm slaughter		Deaths	
		Number	As percent of ewes 1 year and older	Sheep and Lambs	Sheep	Lambs	Sheep and Lambs	Sheep	Lambs		
		1,000 head	Percent	1,000 head	1,000 head	1,000 head	1,000 head	1,000 head	1,000 head		
1965	969	560	75	57	127	268	39	95	85		
1966	972	540	79	62	148	266	37	85	83		
1967	955	502	75	55	142	277	35	105	80		

HOGS AND PIGS

Year	On hand January 1 1,000 head	December-May		June-November		Disposition			
		Sows farrowed	Pig crop	Sows farrowed	Pig crop	Inshipments	Marketings 2/	Farm slaughter	Deaths
		1,000 head	1,000 head	1,000 head	1,000 head	1,000 head	1,000 head	1,000 head	1,000 head
1965	39	4	28	5	28	3	50	8	5
1966	35	4	29	4	32	5	52	5	6
1967	38	5	35	5	35	3	62	5	4

1/ Not strictly a calving rate. Figure represents calves born expressed as a percentage of January 1 inventory of cows and heifers 2 years old and over and not the number of all cows and heifers giving birth to calves during the year.
2/ Excludes inter-farm sales, but includes animals custom slaughtered for use on farms where produced.

LIVESTOCK: PRODUCTION AND INCOME, 1965, 1966, 1967

CATTLE AND CALVES

Year	Production 1/	Marketings 2/	Price per 100 pounds		Value of production	Cash receipts 3/	Value of home consumption	Gross income	Cost of inshipments
	1,000 pounds		Cattle	Calves					
1965	437595	670965	20.20	22.90	91197	138327	1251	139578	50443
1966	443060	648676	23.40	26.40	106546	154589	1455	156044	49286
1967	494240	782400	23.20	26.40	117898	184671	1681	186352	68817

SHEEP AND LAMBS

Year	Production 1/	Marketings 2/	Price per 100 pounds		Value of production	Cash receipts 3/	Value of home consumption	Gross income	Cost of inshipments
	1,000 pounds		Sheep	Lambs					
1965	30979	35076	7.40	21.60	5944	5602	387	5989	522
1966	32720	37215	7.80	24.40	6009	6371	402	6773	527
1967	27288	37388	7.10	22.20	4810	5941	359	6300	411

HOGS

Year	Production 1/	Marketings 2/	Price per 100 pounds		Value of production	Cash receipts 3/	Value of home consumption	Gross income	Cost of inshipments
	1,000 pounds		Dollars	Dollars					
1965	12828	11600	20.80	26.68	2668	2437	375	2812	48
1966	13307	11531	23.10	26.64	3074	2664	442	3106	91
1967	15329	13647	19.20	29.43	2943	2620	353	2973	43

1/ Adjustments made for inshipments and changes in inventory.
2/ Excludes inter-farm sales.
3/ Includes receipts from marketings and from sales of farm-slaughtered meat.

MILK: PRODUCTION, DISPOSITION, PRICE AND INCOME, 1965, 1966 AND 1967

Year	Milk cows on farms 1/	Milk production per cow 2/	Total milk production 2/	Disposition of Milk Produced					Value of Sales (receipts from farm marketings)	Gross farm income from dairy products
				Used on farms where produced	Sold wholesale		Milk and cream retailed by farmer			
					Whole milk	Price per 100 pounds	Milk equivalent	Price per quart		
1965	39	7490	292	17	253	5.04	10	22.0	14951	15658
1966	38	7740	294	15	245	5.71	16	23.2	17702	18399
1967 3/	38	8080	307	14	260	5.80	15	24.3	18725	19364

1/ Average number on farms during year, excluding heifers not yet fresh.

2/ Excludes milk sucked by calves.

3/ Preliminary.

CATTLE AND CALVES ON FEED: MARKETINGS AND PLACEMENTS, BY QUARTERS

Year	Quarter	Total fed cattle marketed	Cattle and calves placed on feed	Year	Quarter	Total fed cattle marketed	Cattle and calves placed on feed
		1,000 head	1,000 head			1,000 head	1,000 head
1965	October 1 - December 31	35	56	1967	January 1 - March 31	50	63
1966	January 1 - March 31	52	62		April 1 - June 30	65	46
	April 1 - June 30	56	45		July 1 - September 30	71	63
	July 1 - September 30	51	48		October 1 - December 31	52	111
	October 1 - December 31	45	77	1968	January 1 - March 31	82	67

CATTLE AND CALVES ON FEED: NUMBER ON FEED, WEIGHT GROUPS, CLASSES AND LENGTH OF TIME ON FEED, BY QUARTERS, 1964-68

Year and Month	Total cattle and calves on feed	Number on feed by weight groups					Number on feed by classes			Number on feed by time		
		Under 500 pounds	500-699 pounds	700-899 pounds	900-1099 pounds	1100 pounds and over	Steers and calves	Heifers and calves	Cows and others	Less than 3 months	3 to 6 months	6 months and over
-----Thousand Head-----												
<u>October 1</u>												
1964	76	19	26	20	9	2	45	30	1	49	23	4
1965	91	24	32	22	13	0	53	37	1	54	28	9
1966	108	19	33	30	24	2	66	41	1	47	42	19
1967	126	29	40	29	27	1	74	52	0	63	40	23
<u>January 1</u>												
1965	99	23	32	27	15	2	57	40	2	56	40	3
1966	112	19	40	39	13	1	64	46	2	55	46	11
1967	140	25	43	49	21	2	87	50	3	76	46	18
1968	185	22	66	69	25	3	103	80	2	110	60	15
<u>April 1</u>												
1965	96	10	32	36	16	2	54	40	2	33	47	16
1966	122	13	55	35	18	1	71	49	2	60	50	12
1967	153	18	57	48	29	2	78	72	3	62	74	17
1968												
<u>July 1</u>												
1964	70	7	22	32	6	3	38	31	1	32	22	16
1965	79	11	23	31	14	0	44	33	2	40	28	11
1966	111	13	35	42	20	1	67	43	1	44	51	16
1967	134	13	40	54	26	1	72	61	1	44	56	34

LIVESTOCK SLAUGHTER: NUMBER SLAUGHTERED, AVERAGE AND TOTAL LIVELWEIGHT, BY SPECIES, 1965, 1966 and 1967

Year	Cattle			Calves			Hogs			Sheep and Lambs		
	Average liveweight	Total liveweight	Number	Average liveweight	Total liveweight	Number	Average liveweight	Total liveweight	Number	Average liveweight	Total liveweight	
	per head	per head		per head	per head		per head	per head				
	1,000 head	1,000 pounds	1,000 head	1,000 pounds	1,000 pounds	1,000 head	1,000 pounds	1,000 pounds	1,000 head	1,000 pounds	1,000 pounds	
1965	237.5	949	225469	1.1	444	488	96.7	231	22362	37.4	105	3931
1966	285.3	956	272799	1.1	465	512	91.3	233	21246	32.7	106	3466
1967	288.2	962	277289	1.3	486	632	100.1	230	23061	44.5	106	4698

New Mexico Agricultural Statistics

FARM CHICKENS: NUMBER RAISED, PRODUCED, DISPOSITION, AND INCOME, 1965, 1966 AND 1967 ^{1/}

Year	Raised ^{2/}	Lost ^{3/}	Produced ^{4/}	Consumed In Farm Household	Sold	Pounds Produced ^{4/}	Pounds Consumed In Farm Household	Pounds Sold	Price per Pound	Value of Production	Cash Receipts	Value of Chickens Consumed	Gross Income
	1,000 head	1,000 head	1,000 head	1,000 head	1,000 head	1,000 pounds	1,000 pounds	1,000 pounds	Cents	1,000 dollars	1,000 dollars	1,000 dollars	1,000 dollars
1965	662	120	532	108	376	2150	335	1542	9.2	198	142	31	173
1966	722	146	576	85	450	2056	272	1800	8.5	175	153	23	176
1967 ^{1/}	787	147	640	81	524	2840	267	2253	8.2	233	185	22	207

^{1/} Does not include commercial broilers.

^{2/} Does not include young chickens lost.

^{3/} Loss during the year of chickens on hand January 1.

^{4/} Production is the number (or pounds) available for utilization during the year.

^{5/} Preliminary.

CHICKENS AND EGGS: CHICKENS RAISED, AVERAGE NUMBER OF LAYERS ON HAND, EGG PRODUCTION, PRICE, AND INCOME, 1965, 1966, AND 1967

Year	Chickens Raised	Average Yearly Number of Layers on Hand	Eggs Produced	Eggs Consumed in Farm Household	Eggs Sold	Price Per Dozen	Cash Receipts	Value of Eggs Consumed in Farm Household	Gross Income
	1,000 head	1,000 head	1,000,000 eggs	1,000,000 eggs	1,000,000 eggs	Cents	1,000 dollars	1,000 dollars	1,000 dollars
1965	662	682	145	7	138	35.5	4082	207	4289
1966	722	709	153	5	148	44.0	5427	183	5610
1967 ^{1/}	787	700	145	6	139	37.5	4344	188	4532

^{1/} Preliminary

New Mexico Agricultural Statistics

SHEEP: (EXCLUDES SHEEP OWNED BY INDIANS): NUMBER ON FARMS, SHEEP SHORN, AND WOOL PRODUCTION, 1965, 1966 AND 1967

Year	Total Sheep	Sheep on Feed	Stock Sheep			Average Weight of Fleece	Wool Production
	1,000 head	1,000 head	Total	All Ewes ^{1/}	All other Sheep	1,000 head	1,000 pounds
1965	730	31	699	647	52	10.0	7144
1966	723	52	671	609	62	10.1	7080
1967 ^{2/}	726	68	658	498	160	10.1	6886

WOOL: NUMBER OF SHEEP SHORN, FLEECE WEIGHT, PRODUCTION, PRICE AND VALUE, 1965, 1966 AND 1967

Year	Sheep Shorn ^{3/}	Average Weight of Fleece	Production	Price Per Pound	Total Value
	1,000 head	Pounds	1,000 pounds	Cents	1,000 dollars
1965	922	9.4	8669	40.0	3468
1966	924	9.5	8754	48.0	4202
1967 ^{2/}	884	9.6	8462	39.0	3300

MCHAIR: NUMBER OF GOATS CLIPPED, FLEECE WEIGHT, PRODUCTION, PRICE, AND VALUE, 1965, 1966 AND 1967

Year	Goats Clipped	Average Weight of Fleece	Production	Price Per Pound	Total Value
	1,000 head	Pounds	1,000 pounds	Cents	1,000 dollars
1965	56	4.5	253	50.0	126
1966	52	4.5	234	42.0	98
1967 ^{2/}	50	4.4	221	36.0	80

BEEES AND HONEY: COLONIES, YIELD, PRODUCTION, PRICE AND VALUE, 1965, 1966 AND 1967

Year	Honey				Beeswax				
	Colonies of Bees	Pound Per Colony	Production	Price Per Pound	Value of Production	Honey Stocks on Hand Dec. 15	Production	Price Per Pound	Value of Production
	1,000 hives	Pounds	1,000 pounds	Cents	1,000 dollars	1,000 pounds	1,000 pounds	Cents	1,000 dollars
1965	13	71	923	14.5	134	332	10	44.0	4
1966	14	73	1022	13.9	142	368	20	44.0	9
1967	15	54	810	12.0	97	178	12	55.0	7

^{1/} Ewes one year and over and ewe lambs

^{2/} Preliminary

^{3/} Includes shearing at commercial feeding yards.

CATTLE ON FEED: NUMBER ON FEED, BY COUNTIES AND QUARTER, JANUARY 1, 1966-APRIL 1, 1968

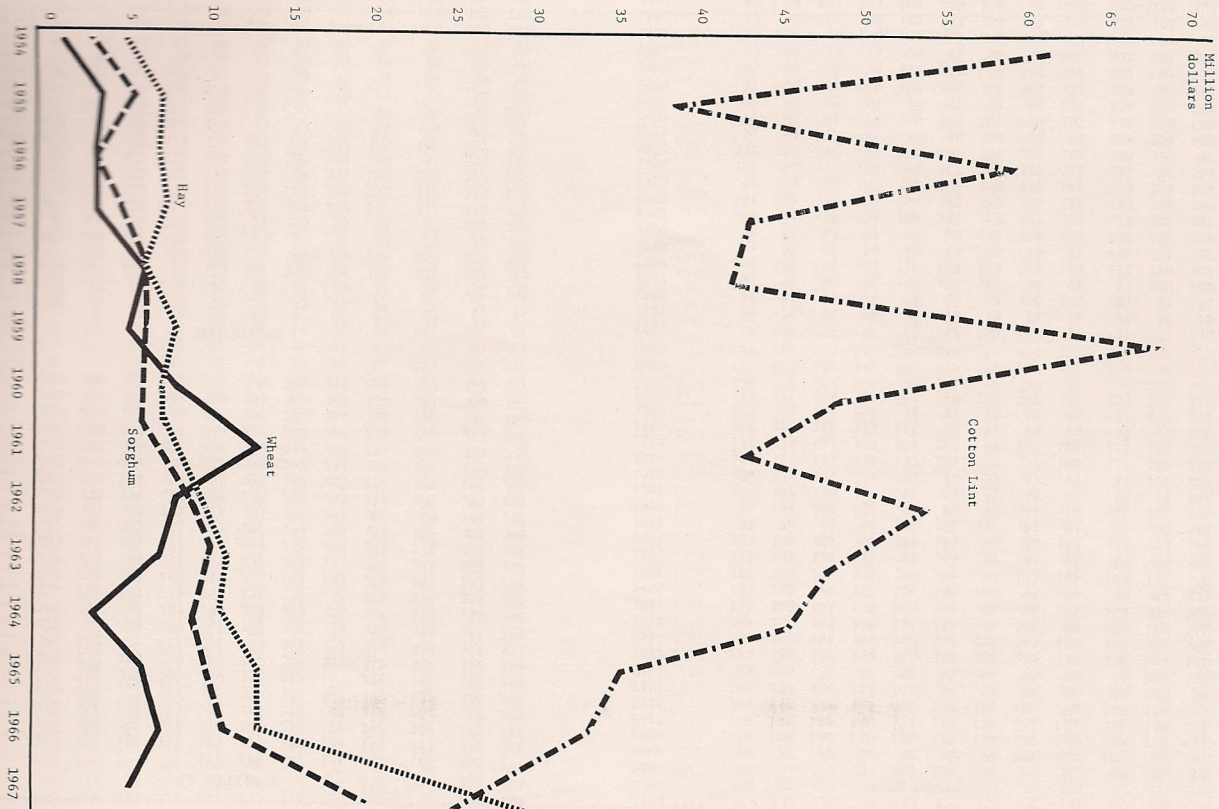
County	Jan. 1 1966	Apr. 1 1966	July 1 1966	Oct. 1 1966	Jan. 1 1967	Apr. 1 1967	July 1 1967	Oct. 1 1967	Jan. 1 1968	Apr. 1 1968 ^{1/}
	Head	Head	Head	Head	Head	Head	Head	Head	Head	Head
Bernalillo	9000	8500	6800	5500	6700	6900	7100	7100	7200	7700
Other Counties ^{2/}	4700	3800	2600	900	3200	3700	2200	1100	5100	4200
NORTHWEST DISTRICT	13700	12300	9400	6400	9900	10600	9300	8200	12300	11900
Curry	27800	35000	34000	28400	33200	42000	34500	31400	42400	36900
Roosevelt	4000	2700	4050	5200	7500	6300	5000	4400	7000	6200
Other Counties ^{3/}	1600	6900	3500	4700	15700	21950	14000	11500	23100	19600
NORTHEAST DISTRICT	33400	44600	41550	38300	56400	70250	53500	47300	72500	62700
SOUTHWEST DISTRICT ^{4/}	3200	4000	3650	3800	4000	5250	6500	5500	7100	4100
Chaves	51000	53000	50700	55200	60000	58700	57200	57800	80000	76100
Dona Ana	5550	3300	1500	1250	3100	2850	2000	1100	4500	5300
Eddy	2000	2000	2350	2000	3500	3400	3500	4400	5400	7400
Lea	3100	2800	1850	1050	2600	1700	1800	1600	3000	2400
Other Counties ^{5/}	50	0	0	0	500	250	200	100	200	100
SOUTHEAST DISTRICT	61700	61100	56400	59500	69700	66900	64700	65000	93100	91300
STATE	112000	122000	111000	108000	140000	153000	134000	126000	185000	170000

^{1/} Preliminary ^{2/} Includes Sandoval and Santa Fe ^{3/} Includes De Baca, Quay, Torrance, and Union ^{4/} Includes Grant, Hidalgo, Luna and Socorro
^{5/} Includes Lincoln and Otero

SHEEP ON FEED: NUMBER ON FEED, BY COUNTIES, JANUARY 1, 1965, 1966, 1967 AND 1968

County	1965	1966	1967	1968 ^{1/}
	Head	Head	Head	Head
Bernalillo	400	1000	1000	1000
Other Counties	400	300	0	400
NORTHWEST DISTRICT	800	1300	1000	1400
Curry	0	500	2100	1300
Other Counties	1200	0	3400	800
NORTHEAST DISTRICT	1200	500	5500	2100
SOUTHWEST DISTRICT	200	0	0	0
Chaves	14300	41300	46000	35000
Eddy	5800	3500	5700	4000
Lea	500	400	0	0
Lincoln	6700	5000	7200	6000
Other Counties	1500	0	2600	1500
SOUTHEAST DISTRICT	28800	50200	61500	46500
STATE	31000	52000	68000	50000

^{1/} Preliminary



New Mexico Agricultural Statistics
 COMPARISONS OF INCOME FROM SELECTED CROPS, NEW MEXICO, 1954-67

NEW MEXICO INDEX OF PRICES RECEIVED BY FARMERS: REVISED, BY COMMODITY, BY MONTHS, 1944-1967 (1955-59=100)

Year	Jan.	Feb.	Mar.	Apr.	May	June	July	Aug.	Sept.	Oct.	Nov.	Dec.	Year	Jan.	Feb.	Mar.	Apr.	May	June	July	Aug.	Sept.	Oct.	Nov.	Dec.			
ALL COMMODITY													FEED GRAINS															
1944					193	189	181	174	175	180	181	177	1944					103	102	100	98	94	87	85	84	
1945	182	187	188	194	193	195	195	192	193	197	201	201	1945	86	90	92	92	98	99	103	101	101	101	101	101	
1946	198	204	209	218	216	211	225	228	240	256	243	244	1946	106	107	109	110	115	134	135	135	127	126	116	112	
1947	248	264	274	275	276	269	272	260	276	281	284	298	1947	114	114	129	134	129	127	131	131	139	136	138	147	
1948	316	293	317	328	332	322	322	305	304	305	306	298	1948	156	130	146	159	146	137	115	105	111	108	114	123	
1949	297	282	302	304	300	281	267	267	276	276	274	268	1949	122	116	116	114	107	84	91	92	89	85	85	89	
1950	268	273	285	290	300	297	310	317	342	344	356	366	1950	93	93	92	95	98	95	94	96	98	97	105	115	
1951	386	403	409	414	401	399	380	372	373	379	376	373	1951	121	132	128	141	147	125	122	129	131	139	144	156	
1952	379	388	388	384	367	347	337	334	334	323	313	293	1952	161	161	161	166	162	142	138	143	161	162	166	166	
1953	379	295	292	288	284	258	260	253	248	253	251	248	1953	163	152	143	128	119	117	111	109	98	104	110	113	
1954	261	264	267	274	268	254	250	252	264	270	255	250	1954	115	110	111	109	107	102	96	96	97	105	105	107	
1955	259	269	265	268	260	251	251	249	248	254	243	231	1955	113	118	117	123	116	109	102	97	95	87	93	103	
1956	238	243	245	251	243	235	242	245	250	263	256	247	1956	106	104	104	105	96	86	93	100	109	123	127	129	
1957	253	262	269	273	274	269	276	264	277	278	272	278	1957	134	132	130	125	98	91	85	84	83	80	81	83	91
1958	277	285	303	311	308	296	299	294	314	316	306	306	1958	101	100	102	99	91	85	84	81	87	94	97	98	
1959	293	302	310	325	324	305	301	294	305	305	296	282	1959	92	96	93	96	97	92	94	91	88	89	90	100	104
1960	282	283	296	293	285	280	272	270	277	281	281	282	1960	104	104	108	111	99	94	92	89	92	96	100	104	
1961	287	285	289	295	281	275	280	281	294	303	297	292	1961	107	107	110	105	96	91	91	88	89	90	96	101	
1962	289	283	296	296	287	280	285	293	297	299	285	279	1962	104	105	105	104	90	94	93	92	95	95	104	108	
1963	287	295	301	302	289	286	295	293	297	299	285	279	1963	109	111	112	116	113	106	100	107	105	115	118	123	
1964	282	288	292	285	268	261	266	260	269	270	265	262	1964	126	128	127	125	104	102	99	100	106	115	118	123	
1965	258	266	272	279	281	290	288	290	286	290	287	285	1965	127	123	116	115	105	98	94	93	90	91	97	100	
1966	291	311	321	316	308	309	303	308	310	311	306	292	1966	101	101	102	100	98	91	92	96	95	97	103	109	
1967	1/	299	296	290	291	295	299	299	299	299	321	315	312	1967	1/	114	121	126	125	112	112	106	107	105	107	112	119	
FOOD GRAINS													COTTON															
1944	76	76	77	78	74	74	71	68	68	71	71	74	1944					68	68	68	67	71	71	71		
1945	77	78	79	79	80	87	96	94	94	98	101	101	1945	70	70	70	70	70	70	70	74	74	76	76		
1946	101	107	129	126	126	101	102	106	126	138	139	143	1946	74	76	75	76	78	80	93	100	108	113	92	93	
1947	143	108	109	115	113	108	105	104	106	105	108	108	1947	93	96	100	96	100	103	107	96	98	97	105	110	
1948	105	100	100	101	100	93	93	91	97	99	99	100	1948	110	102	105	107	110	110	106	98	98	98	98	100	
1949	99	100	101	101	101	99	100	99	99	99	103	106	1949	95	92	92	92	98	98	95	94	97	96	94	87	
1950	107	111	110	111	110	110	109	110	111	112	118	121	1950	76	81	83	89	95	98	110	110	129	124	132	129	
1951	118	117	118	118	113	109	106	110	112	112	116	115	1951	136	139	139	139	139	140	129	113	110	118	132	132	
1952	114	110	113	112	110	98	96	101	104	104	104	109	1952	131	131	135	138	124	130	125	125	126	125	116	107	
1953	110	110	111	111	109	103	107	106	109	111	111	111	1953	97	103	106	109	110	108	110	109	107	115	108	104	
1954	114	114	112	112	114	107	104	104	104	102	102	102	1954	100	100	102	104	104	107	105	105	112	114	108	102	
1955	102	102	102	102	104	97	97	97	97	99	104	107	1955	102	102	100	98	101	101	101	101	103	108	109	97	
1956	107	107	104	104	102	97	97	97	96	96	95	103	1956	94	94	97	98	98	98	98	98	98	108	106	92	
1957	101	102	104	104	104	87	87	87	87	87	94	94	1957	92	94	94	94	105	107	105	93	105	110	106	96	
1958	94	94	97	100	97	87	89	92	94	94	94	94	1958	82	82	92	95	97	97	97	94	114	110	106	96	
1959	94	94	96	98	96	89	89	89	89	89	90	90	1959	81	89	97	109	109	109	107	104	111	109	107	101	
1960	92	93	92	91	90	91	94	95	96	97	97	97	1960	96	86	89	94	102	102	97	104	102	101	97	96	
1961	96	97	98	98	99	100	102	103	104	104	105	106	1961	93	89	88	95	96	97	98	97	106	111	107	102	
1962	106	107	108	111	108	97	99	98	98	101	102	103	1962	95	84	95	102	105	105	108	104	101	97	96	92	
1963	104	105	98	105	101	76	73	74	76	77	78	81	1963	93	96	105	106	105	103	104	101	101	101	102	97	
1964	78	76	74	71	70	66	68	71	71	71	72	74	1964	96	98	101	101	106	105	106	98	109	109	110	102	
1965	76	78	77	77	79	83	93	92	84	87	82	90	1965	89	96	94	94	101	102	98	97	98	101	98		
1966	86	79	87	79	79	76	74	72	72	74	71	71	1966	89	91	91	90	91	104	102	92	92	88	89	80	
1967	1/	86	79	87	79	79	76	74	72	72	74	71	71	1967	1/	81	74	68	68	68	68	68	78	78	76	109	112	104

NEW MEXICO INDEX OF PRICES RECEIVED BY FARMERS; REVISED, BY COMMODITY, BY MONTHS, 1944-1967 (1955-59=100) (CONTINUED)

Year	Jan.	Feb.	Mar.	Apr.	May	June	July	Aug.	Sept.	Oct.	Nov.	Dec.	Year	Jan.	Feb.	Mar.	Apr.	May	June	July	Aug.	Sept.	Oct.	Nov.	Dec.
ALL CROPS													MEAT ANIMALS												
1944	185	187	189	189	193	192	191	186	183	186	185	186	1944	54	58	58	63	61	59	53	49	51	53	53	50
1945	207	211	211	213	216	221	243	250	260	269	247	247	1945	57	63	66	72	62	62	62	58	56	59	60	60
1946	248	253	267	264	265	263	272	255	262	267	277	289	1946	77	88	90	92	93	88	88	84	93	94	92	97
1947	293	266	276	283	283	284	269	249	246	243	249	253	1947	110	103	117	122	126	119	124	117	116	116	114	108
1948	247	233	233	231	237	224	222	222	226	222	221	211	1948	110	104	119	122	117	109	99	98	103	104	102	102
1949	198	204	207	216	226	228	244	254	286	282	303	303	1949	107	109	118	119	123	121	125	125	132	133	132	137
1950	315	325	323	325	327	319	296	279	274	289	311	316	1950	149	158	163	167	157	158	152	153	155	154	143	140
1951	269	272	275	274	268	260	261	257	249	264	256	251	1951	145	154	152	148	143	128	123	120	116	106	102	91
1952	245	243	247	249	248	249	245	246	261	265	256	248	1952	99	100	97	94	94	78	80	76	73	71	73	73
1953	251	253	249	250	251	246	243	239	238	242	245	233	1953	85	89	91	95	92	82	80	81	84	86	79	78
1954	228	228	233	235	232	234	242	242	251	271	271	253	1954	84	90	89	92	86	82	83	82	82	85	74	70
1955	256	258	257	250	254	252	248	226	247	250	243	234	1955	76	81	80	84	82	75	76	78	79	81	74	73
1956	215	215	231	238	239	231	231	225	248	241	234	224	1956	77	84	89	94	94	92	94	96	98	99	96	103
1957	203	217	228	249	248	245	241	240	246	243	242	234	1957	110	115	123	128	127	120	122	120	127	130	125	124
1958	230	215	221	231	237	234	237	238	237	238	238	236	1958	127	128	130	134	135	122	120	115	120	121	115	108
1959	232	227	226	233	232	234	236	231	246	253	251	244	1959	109	115	122	117	111	108	105	98	103	105	105	106
1960	236	221	237	242	242	243	247	246	245	240	241	237	1960	112	113	116	118	109	104	106	109	113	117	114	112
1961	239	246	258	260	256	251	250	246	245	251	255	251	1961	112	114	117	116	110	106	109	111	118	118	110	108
1962	248	252	253	255	254	245	246	238	250	254	259	250	1962	109	112	113	115	107	107	113	113	115	114	103	99
1963	230	239	233	233	232	240	243	238	233	235	240	238	1963	101	105	108	103	92	91	94	91	93	92	87	88
1964	225	228	229	226	223	238	237	229	229	228	232	221	1964	92	94	102	108	110	114	112	113	112	114	109	108
1965	225	228	229	226	223	238	237	229	229	228	232	221	1965	116	129	136	134	130	126	121	129	127	128	124	119
1966	225	217	211	210	206	207	216	214	213	259	265	260	1966	121	122	121	123	127	124	127	129	127	127	120	119
1967	225	217	211	210	206	207	216	214	213	259	265	260	1967	121	122	121	123	127	124	127	129	127	127	120	119

Year	Jan.	Feb.	Mar.	Apr.	May	June	July	Aug.	Sept.	Oct.	Nov.	Dec.	Year	Jan.	Feb.	Mar.	Apr.	May	June	July	Aug.	Sept.	Oct.	Nov.	Dec.	
EGGS													DAIRY PRODUCTS													
1944	66	66	73	81	88	100	122	125	100	122	127	137	1944	71	71	69	68	67	66	65	66	68	70	71	71	
1945	117	88	78	81	81	83	95	100	105	112	127	137	1945	70	70	72	70	69	70	88	94	98	103	106	107	
1946	105	103	105	98	105	103	108	115	134	139	139	142	1946	107	103	103	99	96	94	93	94	99	102	108	111	
1947	149	120	112	108	103	98	108	110	122	134	154	137	1947	111	111	109	108	106	107	108	112	114	119	121	122	
1948	122	112	103	100	100	100	108	117	134	149	166	137	1948	120	119	116	112	109	106	107	108	108	109	111	111	
1949	110	86	73	73	73	73	76	90	100	110	127	147	1949	110	109	106	101	98	94	95	98	99	105	107	108	
1950	110	103	105	103	105	105	108	127	139	144	156	159	1950	109	107	105	104	103	103	104	108	114	118	121	122	
1951	122	98	98	95	95	90	103	122	134	142	147	144	1951	127	126	124	117	116	114	117	118	124	130	132	133	
1952	130	110	120	120	122	122	134	134	142	152	149	147	1952	129	122	115	112	106	100	101	102	107	109	107	107	
1953	132	127	110	98	95	95	105	105	105	98	88	93	1953	102	99	98	95	93	91	90	92	101	101	104	104	
1954	88	98	95	86	90	93	93	105	110	117	117	125	1954	103	102	100	100	97	93	97	99	102	102	103	103	
1955	125	117	117	103	95	95	95	98	98	108	108	110	1955	103	104	102	99	93	94	96	98	100	102	108	107	
1956	110	95	90	90	86	83	86	98	103	110	122	122	1956	106	106	104	100	96	94	94	96	99	102	103	103	
1957	117	108	98	95	90	90	93	98	98	105	105	105	1957	104	103	101	98	94	92	93	95	96	99	101	100	
1958	105	105	100	88	81	86	88	88	98	98	98	98	1958	100	98	97	96	92	90	92	92	96	99	100	99	
1959	93	93	93	93	86	83	88	95	110	120	122	122	1959	101	100	98	95	92	89	92	87	91	93	94	95	
1960	103	98	95	90	83	81	95	98	100	103	98	95	1960	96	96	93	90	86	85	88	92	93	96	97	96	
1961	95	93	83	78	76	73	81	86	95	98	95	95	1961	98	96	92	87	85	82	90	91	96	98	100	99	
1962	90	90	88	78	73	71	73	86	90	90	93	95	1962	100	100	93	90	86	84	88	90	95	97	97	99	
1963	95	86	83	73	71	71	76	86	93	90	90	86	1963	98	97	92	90	87	85	87	89	93	96	97	99	
1964	81	78	73	81	81	81	81	88	94	100	98	105	1964	100	100	100	99	96	94	102	104	111	113	112	110	
1965	108	108	110	108	98	98	103	110	115	117	110	108	1965	112	110	103	100	103	101	100	103	103	107	108	109	111
1966	115	103	103	88	86	78	78	88	93	90	88	98	1966	112	110	103	100	103	101	100	103	101	100	103	107	108
1967	115	103	103	88	86	78	78	88	93	90	88	98	1967	112	110	103	100	103	101	100	103	101	100	103	107	108

NEW MEXICO INDEX OF PRICES RECEIVED BY FARMERS; REVISED, BY COMMODITY, BY MONTHS, 1944-1967 (1955-59=100) (CONTINUED)

Year	Jan.	Feb.	Mar.	Apr.	May	June	July	Aug.	Sept.	Oct.	Nov.	Dec.	Year	Jan.	Feb.	Mar.	Apr.	May	June	July	Aug.	Sept.	Oct.	Nov.	Dec.
WOOL													ALL LIVESTOCK												
1944	100	98	95	92	92	87	92	90	85	90	90	90	1944	179	187	187	198	196	197	196	188	183	191	194	169
1945	92	92	90	95	92	92	90	87	85	85	85	87	1945	189	199	207	223	216	203	210	209	223	243	238	242
1946	87	87	88	95	92	92	90	87	87	90	90	90	1946	248	273	280	285	287	273	273	264	289	294	291	307
1947	90	95	103	110	116	103	105	123	121	123	123	118	1947	338	317	354	368	376	357	370	356	355	359	356	337
1948	123	133	133	128	128	121	116	118	116	116	116	118	1948	342	326	364	370	356	332	307	307	320	325	321	318
1949	136	128	151	139	139	123	131	146	139	162	205	223	1949	331	334	355	356	366	358	369	374	393	399	404	422
1950	228	236	241	236	23																				

New Mexico Agricultural Statistics

PRICES RECEIVED BY FARMERS AND RANCHERS:

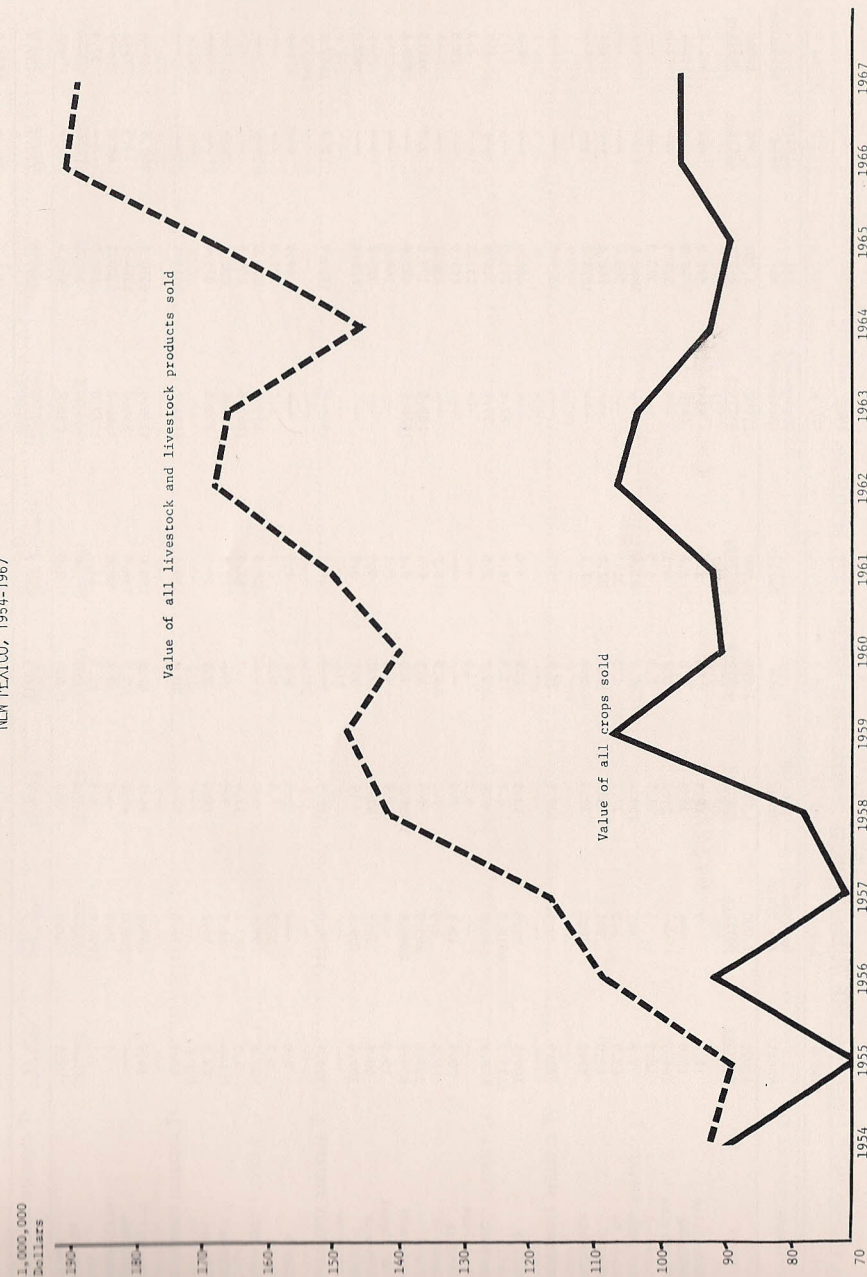
PRINCIPAL CROPS, LIVESTOCK, AND LIVESTOCK PRODUCTS, BY MONTHS, AND YEARS, 1963-1967

Year	Jan.	Feb.	Mar.	Apr.	May	June	July	Aug.	Sept.	Oct.	Nov.	Dec.
WHEAT, All (Dollars per bushel)												
1963	2.02	2.03	2.05	2.11	2.05	1.85	1.88	1.87	1.87	1.92	1.95	1.97
1964	1.98	2.00	1.87	2.00	1.92	1.44	1.39	1.42	1.44	1.46	1.48	1.54
1965	1.48	1.44	1.40	1.36	1.33	1.26	1.30	1.35	1.35	1.35	1.38	1.40
1966	1.45	1.48	1.47	1.47	1.51	1.58	1.78	1.76	1.76	1.60	1.65	1.71
1967 1/	1.63	1.50	1.65	1.50	1.50	1.45	1.41	1.37	1.37	1.40	1.35	1.35
BARLEY (Dollars per bushel)												
1963	1.07	1.07	1.06	1.04	1.03	.97	1.00	1.00	.97	1.00	1.01	1.03
1964	1.06	1.10	1.05	1.03	1.00	.98	.93	.97	.99	.99	1.00	1.03
1965	1.08	1.04	1.04	1.02	1.02	1.02	1.02	1.05	1.05	1.03	1.05	1.07
1966	1.07	1.09	1.09	1.10	1.12	1.02	1.02	1.04	1.02	1.05	1.05	1.07
1967 1/	1.09	1.09	1.07	1.07	1.05	1.04	1.01	1.03	1.03	1.04	1.10	1.05
GRAIN SORGHUM (Dollars per CWT)												
1963	1.78	1.80	1.80	1.78	1.84	1.85	1.81	1.86	1.83	1.84	1.86	1.89
1964	1.91	1.88	1.87	1.90	1.89	1.90	1.90	1.91	1.89	1.94	2.00	2.01
1965	1.99	1.96	1.98	1.98	2.01	2.01	1.98	1.96	1.86	1.80	1.78	1.78
1966	1.80	1.81	1.82	1.80	1.82	1.84	1.90	1.95	1.95	1.80	1.80	1.83
1967 1/	1.89	1.90	1.94	1.98	2.00	2.02	2.01	2.00	1.90	1.85	1.75	1.75
UPLAND COTTON (Cents per pound)												
1963	30.5	31.5	34.5	35.0	34.0	33.5	34.0	33.0	33.0	33.0	33.5	32.0
1964	31.5	32.5	33.0	33.0	35.0	34.5	35.0	----	36.0	36.0	36.5	33.6
1965	29.0	31.5	31.0	31.0	31.5	33.0	33.5	----	32.0	32.5	33.0	32.5
1966	29.0	30.0	30.0	29.5	30.0	34.0	33.5	----	28.8	29.0	29.0	25.9
1967 1/	26.0	24.0	22.0	22.0	22.0	22.0	25.0	----	----	36.0	37.2	34.0
ALL HAY (Dollars per ton)												
1963	29.60	30.00	30.50	32.50	30.50	27.50	25.50	28.00	27.20	31.50	34.40	37.50
1964	35.50	36.50	36.50	35.50	26.50	25.20	24.00	24.50	27.20	30.60	31.60	33.40
1965	35.30	33.80	30.50	30.40	25.60	22.70	21.00	20.80	20.40	21.30	24.20	25.60
1966	25.60	25.50	26.00	25.50	24.00	21.00	21.00	22.00	22.00	24.00	26.50	29.00
1967 1/	30.50	33.50	35.50	34.50	28.70	28.70	26.00	26.70	26.70	28.00	31.00	34.20
BEEF CATTLE (Dollars per 100 pounds)												
1963	19.90	20.70	21.10	21.20	19.70	19.70	21.20	21.00	21.50	21.50	18.70	17.80
1964	18.30	19.20	19.90	19.00	16.80	16.50	17.20	16.50	16.80	16.70	15.50	15.70
1965	16.60	17.10	18.90	20.00	20.50	21.00	20.40	20.70	20.30	21.00	19.60	19.00
1966	20.70	23.40	25.00	24.70	23.90	23.10	22.00	23.70	23.30	23.70	22.70	21.40
1967 1/	22.50	22.40	22.20	22.30	23.10	22.50	23.60	24.00	23.60	24.10	22.30	21.70
CALVES (Dollars per 100 pounds)												
1963	26.00	25.50	25.00	26.50	25.00	24.50	25.00	26.00	26.00	25.00	24.50	24.00
1964	24.00	23.80	23.70	22.60	20.30	20.20	20.00	20.00	20.60	20.00	19.60	19.50
1965	19.80	19.70	19.80	21.00	21.00	23.20	22.90	23.00	24.00	23.00	23.30	23.80
1966	24.00	27.00	27.80	27.80	26.80	26.00	25.00	26.00	26.70	26.50	26.50	26.50
1967 1/	26.50	26.00	26.00	26.50	28.00	27.00	27.00	27.70	27.70	26.50	26.00	26.20
HOGS (Dollars per 100 pounds)												
1963	15.80	15.30	14.20	13.20	13.80	15.30	16.80	16.50	15.40	15.30	14.60	14.40
1964	15.00	15.20	14.80	14.50	15.10	15.50	17.00	16.20	16.50	15.60	14.60	14.90
1965	15.60	16.30	16.30	16.80	19.30	22.20	23.70	24.20	22.30	22.80	22.90	27.00
1966	27.70	27.30	24.50	22.10	22.30	23.80	23.90	25.00	22.60	21.10	19.30	19.00
1967 1/	19.00	19.50	18.90	17.30	20.90	21.20	21.20	20.80	19.00	18.30	17.30	16.60
LAMBS (Dollars per 100 pounds)												
1963	16.90	16.50	16.00	16.50	16.50	16.50	15.50	15.00	15.00	15.50	15.50	15.50
1964	15.80	16.50	18.00	18.00	17.50	16.80	16.80	17.00	17.00	17.70	18.00	18.50
1965	19.50	20.40	21.50	21.50	21.00	22.50	21.50	22.00	22.00	21.50	22.00	24.00
1966	26.00	26.50	25.80	25.00	24.50	24.30	24.00	24.50	24.50	24.00	23.50	23.50
1967 1/	23.00	20.00	20.00	20.00	23.70	23.50	23.40	23.00	22.00	22.50	22.70	23.00
MILK, WHOLESALE (Dollars per 100 pounds)												
1963	5.40	5.25	5.00	4.70	4.55	4.40	4.90	4.95	5.25	5.40	5.50	5.45
1964	5.55	5.50	5.05	4.90	4.65	4.50	4.75	4.85	5.20	5.35	5.35	5.45
1965	5.40	5.35	5.00	4.85	4.70	4.55	4.70	4.80	5.10	5.25	5.35	5.45
1966	5.55	5.55	5.50	5.45	5.20	5.10	5.60	5.75	6.15	6.30	6.25	6.10
1967 1/	6.20	6.10	5.65	5.45	5.65	5.50	5.45	5.65	5.90	5.90	6.00	6.05

1/ Subject to revision.

New Mexico Agricultural Statistics

VALUE OF ALL CROPS SOLD VERSUS VALUE OF ALL LIVESTOCK AND LIVESTOCK PRODUCTS SOLD, NEW MEXICO, 1954-1967



CROP VALUES: FARM VALUES OF PRODUCTION OF PRINCIPAL CROPS, BY COUNTIES, 1966

County	Wheat	Sorghum for Grain	Corn for Grain	Oats	Barley	Cotton and Cottonseed	All Hay	Alfalfa Seed	Broomcorn
	1,000 dollars	1,000 dollars	1,000 dollars	1,000 dollars	1,000 dollars	1,000 dollars	1,000 dollars	1,000 dollars	1,000 dollars
Bernalillo	12.1	.3	19.3	.5	2.9	---	576.0	---	---
McKinley	13.0	---	36.9	2.6	.4	---	60.0	---	---
Rio Arriba	106.7	---	25.1	3.7	4.1	---	374.5	---	---
Sandoval	10.3	.3	59.2	2.8	1.5	---	393.8	---	---
San Juan	8.8	4.1	239.4	7.5	15.6	---	1080.0	---	---
Santa Fe	63.0	1.5	77.7	1.3	31.4	---	360.0	---	---
Taos	13.0	1.1	13.2	10.1	31.2	---	260.0	---	---
Valencia	63.0	22.2	32.4	3.9	44.1	---	1275.0	---	---
NORTHWEST DISTRICT 1/	289.9	29.5	503.2	32.4	131.2	---	4379.3	---	---
Colfax	107.5	20.8	33.8	2.1	5.6	---	480.0	---	---
Curry	6115.2	6911.5	6.7	3.6	14.4	87.6	275.0	---	17.5
De Baca	6.7	67.6	.8	3.8	2.6	39.1	310.0	---	---
Guadalupe	---	---	6.2	.6	---	---	157.5	---	2.1
Harding	70.9	13.5	2.4	---	---	---	165.0	---	13.3
Mora	5.4	8.3	1.1	4.9	5.7	---	432.2	---	---
Quay	537.6	865.9	1.9	4.1	1.4	187.5	578.0	2.7	512.4
Roosevelt	514.5	2514.6	16.5	1.5	8.1	1628.1	423.0	---	908.6
San Miguel	18.8	4.4	9.2	1.5	2.1	---	168.0	---	---
Torrance	40.8	23.1	40.5	3.1	5.9	---	315.0	---	---
Union	107.0	709.1	.2	1.1	3.7	---	220.0	---	63.3
NORTHEAST DISTRICT 1/	7524.4	11138.8	119.3	26.3	49.5	1942.3	3523.7	2.7	1517.2
Catron	2.0	---	2.3	---	1.6	---	47.5	---	---
Grant	6.5	37.9	3.4	6.2	2.3	3.4	289.0	---	---
Hidalgo	37.6	1185.6	6.0	---	41.5	879.5	336.0	---	---
Luna	1.5	1383.2	53.6	.7	64.9	2609.8	264.5	---	---
Sierra	---	11.9	3.8	---	13.5	407.4	202.5	---	---
Socorro	13.5	56.2	24.9	3.1	15.3	231.6	875.0	---	---
SOUTHWEST DISTRICT 1/	61.1	2674.8	94.0	10.0	139.1	4131.7	2014.5	---	---
Chaves	14.7	460.2	36.2	47.6	208.0	5273.0	6550.2	101.0	---
Dona Ana	---	208.0	49.1	5.3	156.0	7888.0	1584.1	24.3	---
Eddy	.7	36.9	3.0	43.4	47.5	3465.0	4200.2	45.0	---
Lea	7.1	1996.9	8.5	11.4	18.7	1777.0	672.0	---	57.8
Lincoln	---	---	1.3	2.2	---	---	209.0	---	---
Otero	5.1	31.9	9.4	6.4	7.0	268.0	192.0	---	---
SOUTHEAST DISTRICT 1/	27.6	2733.9	107.5	116.3	437.2	18671.0	13407.5	170.3	57.8
STATE	7903.0	16577.0	824.0	185.0	874.0	24745.0	23325.0	212.0	1575.0

1/ For some crops, county values will not add to district totals. District totals include counties for which separate estimates were not made.

CROP VALUES: FARM VALUES OF PRODUCTION OF PRINCIPAL CROPS, BY COUNTIES, 1966

County	Potatoes	Sweet-Potatoes	Peanuts	Dry Beans	Early Spring and Early Fall Lettuce	Processing Tomatoes	Onions	Apples	Totals
	1,000 dollars	1,000 dollars	1,000 dollars	1,000 dollars	1,000 dollars	1,000 dollars	1,000 dollars	1,000 dollars	1,000 dollars
Bernalillo	---	---	---	5.7	34.8	---	90.5	84.1	826.2
McKinley	---	---	---	19.4	---	---	---	---	132.3
Rio Arriba	---	---	---	1.8	---	---	---	370.4	886.3
Sandoval	---	---	---	.8	---	---	---	151.5	620.2
San Juan	---	---	---	13.2	---	---	---	336.7	1705.3
Santa Fe	423.8	---	---	1.5	---	---	22.6	---	982.8
Taos	37.5	---	---	3.0	---	---	---	114.5	483.6
Valencia	104.4	---	---	6.6	174.6	---	174.0	33.6	1933.8
NORTHWEST DISTRICT 1/	565.7	---	---	52.0	209.4	---	287.1	1090.8	7570.5
Colfax	---	---	---	2.6	---	---	---	---	652.4
Curry	---	---	2.8	14.7	---	---	---	---	13449.0
De Baca	---	---	---	---	---	---	---	16.8	447.4
Guadalupe	---	---	---	2.2	---	---	---	---	168.6
Harding	---	---	---	---	---	---	---	---	265.1
Mora	---	---	---	1.6	---	---	---	---	459.2
Quay	---	---	9.9	1.1	---	---	---	---	2702.5
Roosevelt	---	219.0	2046.5	.8	---	---	74.4	---	8355.6
San Miguel	---	---	---	3.7	---	---	---	---	207.7
Torrance	774.4	---	---	95.3	203.1	---	9.6	---	1510.8
Union	---	---	---	---	---	---	---	---	1104.4
NORTHEAST DISTRICT 1/	823.3	219.0	2059.2	122.0	203.1	---	84.0	40.3	29346.2
Catron	---	---	---	1.1	---	---	---	---	54.5
Grant	---	---	---	---	---	---	---	50.5	399.2
Hidalgo	---	---	---	6.0	---	---	---	---	2492.2
Luna	---	---	---	116.4	---	46.7	195.8	---	4737.1
Sierra	---	---	---	---	7.7	---	31.5	---	678.3
Socorro	---	---	---	4.5	15.5	---	13.5	---	1253.1
SOUTHWEST DISTRICT 1/	---	---	---	128.0	23.2	46.7	240.8	62.2	9626.1
Chaves	---	---	---	1.0	---	---	---	---	12691.9
Dona Ana	---	---	---	1.5	4414.3	46.8	3403.8	---	17781.2
Eddy	---	---	---	---	---	---	99.2	---	7940.9
Lea	---	---	38.8	3.5	---	---	235.1	---	4826.8
Lincoln	---	---	---	---	---	---	---	336.7	549.2
Otero	---	---	---	---	---	76.5	---	---	596.3
SOUTHEAST DISTRICT 1/	---	20.0	38.8	6.0	4414.3	123.3	3738.1	489.7	44559.3
STATE	1389.0	239.0	2098.0	308.0	4850.0	170.0	4350.0	1683.0	91307.0

1/ For some crops, county values will not add to district totals. District totals include counties for which separate estimates were not made.

CROP VALUES: FARM VALUES OF PRODUCTION OF PRINCIPAL CROPS, BY COUNTIES, 1967 ^{1/}

County	Wheat	Sorghum for Grain	Corn for Grain	Barley	Cotton and Cottonseed	All Hay	Alfalfa Seed	Broomcorn
	1,000 dollars	1,000 dollars	1,000 dollars	1,000 dollars	1,000 dollars	1,000 dollars	1,000 dollars	1,000 dollars
Bernalillo	10.4	.7	3.8	2.9	---	754.9	---	---
McKinley	5.5	---	45.6	.7	---	87.9	---	---
Rio Arriba	74.1	---	20.1	6.7	---	480.4	---	---
Sandoval	3.0	.2	42.8	1.5	---	475.8	---	---
San Juan	2.0	3.6	136.7	15.8	---	1509.8	---	---
Santa Fe	30.9	1.4	74.7	33.1	---	295.3	---	---
Taos	8.3	.7	4.6	25.8	---	352.3	---	---
Valencia	62.5	22.8	18.9	21.0	---	1692.2	---	---
NORTHWEST DISTRICT ^{2/}	196.7	29.4	347.2	107.5	---	5648.6	---	---
Colfax	72.6	22.0	43.1	5.4	---	603.9	---	---
Curry	4144.0	8514.0	2.0	80.2	73.3	355.6	---	20.6
De Baca	12.7	82.5	.6	4.8	40.5	432.8	---	---
Guadalupe	---	.7	5.4	---	---	187.9	---	3.0
Harding	19.9	20.2	1.2	---	---	234.3	---	15.5
Mora	4.3	4.8	.2	4.7	---	463.0	---	---
Quay	176.8	684.0	3.9	1.6	212.8	890.6	---	483.8
Roosevelt	400.2	3122.0	31.8	7.6	1292.4	560.0	---	763.2
San Miguel	15.2	4.2	9.5	1.8	---	145.5	---	---
Torrance	35.3	23.8	72.9	26.2	---	384.3	---	---
Union	62.9	563.5	.3	2.6	---	265.4	---	46.9
NORTHEAST DISTRICT ^{2/}	4943.9	13041.7	170.9	134.9	1619.0	4523.3	4.9	1333.0
Catron	---	---	---	2.0	---	51.2	---	---
Grant	4.8	30.5	4.4	2.4	20.0	320.2	---	---
Hidalgo	205.4	1248.0	72.4	44.1	998.5	468.5	---	---
Luna	62.2	1520.0	278.7	102.4	2916.5	320.2	---	---
Sierra	---	11.2	5.4	11.6	397.0	307.5	---	---
Socorro	11.0	51.0	20.1	14.4	262.0	1192.9	---	---
SOUTHWEST DISTRICT ^{2/}	283.4	2860.7	381.0	176.9	4594.0	2660.5	---	---
Chaves	13.2	616.0	44.2	236.3	4461.0	7715.3	115.8	---
Dona Ana	2.8	168.0	6.7	131.3	9384.0	1921.5	32.8	---
Eddy	6.6	82.0	2.4	42.0	5107.0	5533.9	102.5	---
Lea	---	2324.0	3.4	21.0	2792.0	912.6	---	---
Lincoln	---	---	1.1	---	---	241.6	---	---
Otero	1.4	32.2	8.1	7.1	335.0	214.7	---	---
SOUTHEAST DISTRICT ^{2/}	24.0	3222.2	65.9	437.7	22079.0	16539.6	251.1	---
STATE	5448.0	19154.0	965.0	857.0	28292.0	29372.0	256.0	1333.0

^{1/} Preliminary.

^{2/} For some crops, county values will not add to district totals. District totals include county for which separate estimates were not made.

CROP VALUES: FARM VALUES OF PRODUCTION OF PRINCIPAL CROPS, BY COUNTIES, 1967 ^{1/}

County	Potatoes	Sweet- potatoes	Peanuts	Dry Beans	Early Spring and Early Fall Lettuce	Processing Tomatoes	Onions	Apples	Totals
	1,000 dollars	1,000 dollars	1,000 dollars	1,000 dollars	1,000 dollars	1,000 dollars	1,000 dollars	1,000 dollars	1,000 dollars
Bernalillo	---	---	---	2.2	55.8	---	51.9	---	882.6
McKinley	---	---	---	11.2	---	---	---	---	150.9
Rio Arriba	---	---	---	1.0	---	---	---	1.5	583.8
Sandoval	---	---	---	.3	---	---	---	---	523.6
San Juan	---	---	---	10.9	---	---	---	61.0	1739.8
Santa Fe	246.0	---	---	1.3	---	---	16.4	---	699.1
Taos	---	---	---	1.8	---	---	---	---	393.5
Valencia	42.0	---	---	3.0	261.5	---	79.1	---	2203.0
NORTHWEST DISTRICT ^{2/}	288.0	---	---	31.7	317.3	---	147.4	62.5	7176.3
Colfax	---	---	---	1.9	---	---	---	---	748.9
Curry	---	---	---	6.4	---	---	---	---	13199.1
De Baca	---	---	3.0	1.0	---	---	---	22.9	597.8
Guadalupe	---	---	---	---	---	---	---	---	197.0
Harding	---	---	---	---	---	---	---	---	291.1
Mora	---	---	---	1.2	---	---	---	---	478.2
Quay	---	---	11.0	3.2	---	---	---	---	2467.7
Roosevelt	---	228.0	2207.0	3.6	---	---	70.9	---	8686.7
San Miguel	---	---	---	2.2	---	---	---	---	178.4
Torrance	722.0	---	---	52.8	333.9	---	27.4	---	1678.6
Union	---	---	---	---	---	---	---	---	941.6
NORTHEAST DISTRICT ^{2/}	1002.0	248.0	2221.0	72.3	333.9	---	98.3	22.9	29770.0
Catron	---	---	---	.3	---	---	---	---	53.5
Grant	---	---	---	---	---	---	---	1.5	383.8
Hidalgo	---	---	---	2.8	---	---	---	---	3039.7
Luna	---	---	---	41.6	---	30.3	74.3	---	5346.2
Sierra	---	---	---	---	---	---	37.8	---	770.5
Socorro	---	---	---	4.3	---	---	50.4	---	1606.1
SOUTHWEST DISTRICT ^{2/}	---	---	---	49.0	502.2	30.3	162.5	1.5	11702.6
Chaves	---	---	---	1.1	---	---	---	141.8	13344.7
Dona Ana	---	---	---	1.5	10502.6	154.8	3141.2	---	25447.2
Eddy	---	---	---	---	---	---	68.0	---	10944.4
Lea	---	---	40.0	4.4	---	---	162.6	---	6260.0
Lincoln	---	---	---	---	---	---	---	76.3	319.0
Otero	---	---	---	---	---	59.9	---	---	658.4
SOUTHEAST DISTRICT ^{2/}	---	---	40.0	7.0	10502.6	214.7	3371.8	218.1	56973.7
STATE	1290.0	248.0	2261.0	160.0	11656.0	245.0	3780.0	305.0	105622.0

^{1/} Preliminary

^{2/} For some crops, county values will not add to district totals. District totals include counties for which separate estimates were not made.

LIVESTOCK INVENTORY VALUES: FARM INVENTORY VALUE OF SPECIFIED SPECIES OF LIVESTOCK BY COUNTIES, JANUARY 1, 1967

County	All cattle 1/	Milk cows 2/	Hogs	All sheep	Chickens	Total
---1,000 dollars---						
Bernalillo	3151.0	824.1	33.7	206.2	137.7	3528.6
McKinley	2329.0	20.1	24.5	1320.2	6.8	3680.5
Rio Arriba	3562.0	60.3	12.9	1343.0	8.7	4926.6
Sandoval	1918.0	40.2	10.7	206.2	4.6	2139.5
San Juan	2603.0	241.2	31.8	2931.4	16.8	5583.0
Santa Fe	3562.0	60.3	13.8	20.6	7.8	3604.2
Taos	1370.0	60.3	20.8	821.0	9.7	2221.5
Valencia	6850.0	964.8	35.1	658.0	24.2	7567.3
NORTHWEST DISTRICT	25345.0	2271.3	183.3	7506.6	216.3	33251.2
Colfax	8905.0	100.5	18.4	92.8	8.2	9024.4
Curry	8631.0	160.8	140.8	101.1	39.4	8912.3
De Baca	4384.0	80.4	38.2	439.4	8.2	4869.8
Guadalupe	4247.0	40.2	3.1	825.1	3.9	5079.1
Harding	4658.0	40.2	3.7	20.6	5.3	4687.6
Mora	3288.0	100.5	4.3	262.0	6.8	3561.1
Quay	9864.0	281.4	113.2	70.1	22.3	10069.6
Roosevelt	9727.0	1849.2	195.8	94.9	40.7	10058.4
San Miguel	7124.0	100.5	9.2	72.2	11.6	7217.0
Torrance	4247.0	140.7	6.4	509.5	5.0	4767.9
Union	12330.0	140.7	36.7	37.1	14.6	12418.4
NORTHEAST DISTRICT	77405.0	3035.1	569.8	2524.8	166.0	80665.6
Catron	5617.0	40.2	4.6		4.9	5626.5
Grant	7535.0	100.5	14.4		4.6	7554.0
Hidalgo	6302.0	60.3	30.6		3.0	6335.6
Luna	4658.0	40.2	23.0		30.8	4711.8
Sierra	3562.0	522.6	32.1		5.5	3599.6
Socorro	6987.0	40.2	7.1		3.5	6997.6
SOUTHWEST DISTRICT	34661.0	804.0	111.8	3/ 527.9	52.3	35353.0
Chaves	13152.0	221.1	65.8	2881.9	34.9	16134.6
Dona Ana	3699.0	723.6	35.2	61.9	302.6	4098.7
Eddy	7809.0	522.6	29.2	1283.1	46.6	9167.9
Lea	10549.0	482.4	131.6	775.6	35.9	11492.1
Lincoln	5069.0	80.4	7.6	3486.4	8.7	8571.7
Otero	4932.0	100.5	28.7	651.8	8.7	5621.2
SOUTHEAST DISTRICT	45210.0	2130.6	298.1	9140.7	437.4	55086.2
STATE	182621.0	8241.0	1163.0	19700.0	872.0	204356.0

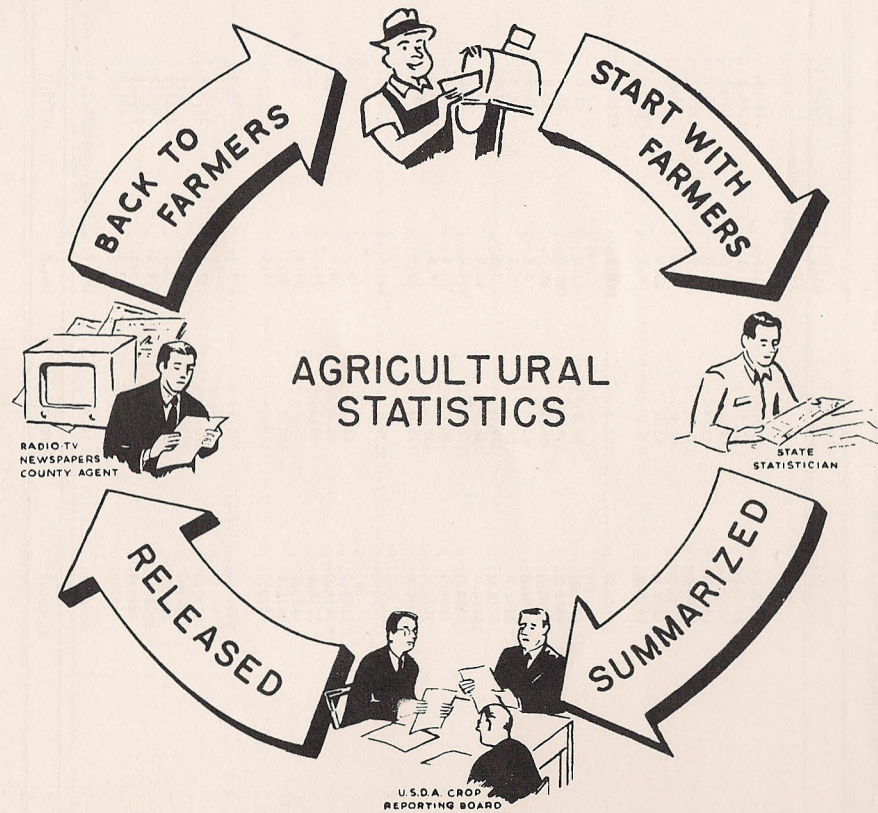
1/ Includes milk cows.
 2/ Cows and heifers two years old and over kept for milk.
 3/ District total includes counties for which separate estimates were not made.

LIVESTOCK INVENTORY VALUES: FARM INVENTORY VALUE OF SPECIFIED SPECIES OF LIVESTOCK BY COUNTIES, JANUARY 1, 1968 1/

County	All cattle 2/	Milk cows 3/	Hogs	All sheep	Chickens	Total
---1,000 dollars---						
Bernalillo	3128.0	817.0	21.7	184.4	149.3	3483.4
McKinley	2448.0	21.5	12.1	1186.3	2.0	3648.4
Rio Arriba	3672.0	86.0	7.2	1136.0	25.7	4840.9
Sandoval	1904.0	43.0	4.8	182.6	8.8	2100.2
San Juan	2584.0	279.5	28.9	2327.7	11.0	4951.6
Santa Fe	3536.0	86.0	7.2	18.6	8.4	3570.2
Taos	1496.0	43.0	12.1	659.2	13.6	2180.9
Valencia	6936.0	946.0	24.1	521.5	14.8	7496.4
NORTHWEST DISTRICT	25704.0	2322.0	118.1	6216.3	233.6	32272.0
Colfax	8704.0	86.0	11.6	82.0	7.4	8805.0
Curry	9520.0	150.5	106.0	87.5	29.6	9743.1
De Baca	4080.0	86.0	29.9	393.0	4.9	4507.8
Guadalupe	4080.0	43.0	2.9	651.8	4.8	4739.5
Harding	4352.0	64.5	3.4	18.6	4.7	4378.7
Mora	3128.0	129.0	3.9	232.9	10.0	3374.8
Quay	10064.0	236.5	91.6	63.3	16.7	10235.6
Roosevelt	9928.0	1978.0	159.0	82.0	27.2	10196.2
San Miguel	7208.0	86.0	4.8	69.0	27.6	7309.4
Torrance	3672.0	150.5	9.6	454.5	6.3	4142.4
Union	13056.0	129.0	22.9	31.7	11.5	13122.1
NORTHEAST DISTRICT	77792.0	3139.0	445.6	2166.3	150.7	80554.6
Catron	5168.0	64.5	2.4		5.8	5176.2
Grant	7616.0	86.0	9.6		5.1	7630.7
Hidalgo	5712.0	64.5	72.3		5.7	5790.0
Luna	4896.0	64.5	24.1		5.6	4925.7
Sierra	3672.0	602.0	36.2		4.2	3712.4
Socorro	6800.0	43.0	4.8		6.9	6811.7
SOUTHWEST DISTRICT	33864.0	924.5	149.4	4/ 298.0	33.3	34344.7
Chaves	15232.0	193.5	49.4	2420.9	25.5	17727.8
Dona Ana	3808.0	795.5	48.2	52.1	437.0	4345.3
Eddy	7344.0	516.0	23.1	1016.9	11.3	8395.3
Lea	10200.0	494.5	100.1	651.7	29.7	10981.5
Lincoln	4624.0	86.0	6.5	2960.9	7.6	7599.0
Otero	4488.0	129.0	23.6	474.9	5.3	4991.8
SOUTHEAST DISTRICT	45696.0	2214.5	250.9	7577.4	516.4	54040.7
STATE	183056.0	8600.0	964.0	16258.0	934.0	201212.0

1/ Preliminary
 2/ Includes milk cows.
 3/ Cows and heifers two years old and over kept for milk.
 4/ District total includes counties for which separate estimates were not made.

Agriculture 1967



CROP AND LIVESTOCK REPORTING SERVICE

NEW MEXICO CROP REPORTING DISTRICTS

