

**NEW MEXICO
DEPARTMENT OF AGRICULTURE**

New Mexico State University
University Park, New Mexico

DALLAS RIERSON, Director

COOPERATING WITH
UNITED STATES DEPARTMENT OF AGRICULTURE
Statistical Reporting Service
Field Operation Division

COMPILED BY
NEW MEXICO CROP AND LIVESTOCK
REPORTING SERVICE

Joe D. Herman — Agricultural Statistician in Charge
Lloyd P. Garrett — Agricultural Statistician
Robert L. Todd — Agricultural Statistician
Robert L. Roebuck — Agricultural Statistician
Walter R. Parr — Agricultural Statistician
Hazel M. Hobbs — Supervisory Statistical Assistant

142 S. Water Street
P. O. Drawer 580
Las Cruces, New Mexico 88001

TABLES OF CONTENTS

	Pages
FOREWORD.....	2
CLIMATE OF NEW MEXICO.....	3
CROP SUMMARY, 1963.....	4-5
CROP SUMMARY TABLE, 1962, 1963, and 5-YEAR AVERAGE.....	6
FARM INCOME, TABLES.....	7-8
FARM INCOME, CHARTS.....	8-9
LIVESTOCK SUMMARY JAN. 1, 1964.....	38
CROP AND LIVESTOCK REPORTS.....	52

STATE TABLES

CROPS.....	11
LIVESTOCK.....	39-45

COUNTY ESTIMATES

GRAINS:	
Wheat.....	12-13
Sorghum.....	14-15
Corn.....	16-17
Oats.....	18-19
Barley.....	20-21
MISCELLANEOUS CROPS:	
Cotton.....	22-25
Hays.....	26-27
Alfalfa Seed.....	27
Broomcorn.....	28
Potatoes.....	29
Sweetpotatoes.....	29
Peanuts.....	29
Dry Beans.....	30-31
VEGETABLES:	
Lettuce.....	33
Tomatoes.....	34
Carrots.....	35
Cantaloups.....	35
Onions.....	36
FRUIT:	
Apples.....	36
LIVESTOCK:	
Cattle.....	46-47
Milk Cows.....	46-47
Hogs.....	46-47
Sheep.....	46-47
Chickens.....	46-47
Cattle on Feed.....	48
Sheep on Feed.....	48
VALUE OF CROP PRODUCTION AND LIVESTOCK INVENTORY VALUE:	
Individual and Total Value of Principal Crops.....	49-50
Livestock Inventory Values by Species Jan. 1, 1964.....	51

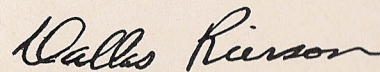
FOREWORD

Agriculture is a continually changing industry, therefore, up to date information as to trends and actual production is a must to the producer as well as to all facets of our industry and those closely associated with agriculture.

The basic industry of New Mexico is agriculture and only by use of the most accurate information available can we plan and move ahead in this fast changing time.

Volume III of the New Mexico Agricultural Statistics, in addition to up-dating previous county estimates, has added production values of the major New Mexico crops and livestock inventory values in order to better serve the requirements of our time.

This work is a cooperative program between the New Mexico Department of Agriculture and the Statistical Reporting Service of the United States Department of Agriculture, and it is partially financed through matching funds of the Research and Marketing Act of 1964.



Dallas Rierson, Director
New Mexico Department of Agriculture

CLIMATE OF NEW MEXICO: Average first fall and last spring date of 32 degrees, days between dates, average 1931-1960 precipitation, 1962-1963

County and Station	Freeze data years of record	Average first date of 32 degrees	Average last spring date of 32 degrees	Average number of days between dates	Precipitation — Inches		
					Average 1931-60	1962	1963
	Years	Date	Date	Days	Inches		
Bernalillo							
Albuquerque	71	Oct. 26	Apr. 17	192	8.13	5.39	7.47
Sandoval							
Jemez Springs	51	Oct. 22	May 1	174	17.68	13.07	13.94
San Juan							
Shiprock	33	Oct. 14	May 1	166	16.84	0	0
Aztec Ruins Natl. Monument	50	Oct. 10	May 12	151	9.82	8.10	6.87
Santa Fe							
Santa Fe	86	Oct. 15	May 5	163	13.76	11.29	14.18
Taos							
Taos	61	Oct. 3	May 16	140	12.08	7.89	8.66
Valencia							
Los Lunas	62	Oct. 18	Apr. 23	178	7.92	6.36	6.34
San Fidel	38	Oct. 13	May 6	160	19.72	7.85	8.10
Colfax							
Raton	19	Sept. 28	May 9	142	14.75	9.75	10.65
Springer	66	Oct. 6	May 8	151	15.59	8.06	13.87
Curry							
Clovis	49	Oct. 28	Apr. 16	195	17.48	14.57	18.23
Melrose	20	Oct. 24	Apr. 17	190	15.13	15.04	16.11
De Baca							
Ft. Sumner	50	Oct. 23	Apr. 18	188	13.74	14.23	12.92
Alamogordo Dam	24	Oct. 29	Apr. 16	196	12.66	10.65	14.61
Guadalupe							
Santa Rosa	52	Oct. 25	Apr. 17	191	13.92	11.93	10.02
Quay							
Tucumcari	57	Oct. 27	Apr. 15	195	15.07	12.60	15.22
Obar	35	Oct. 21	Apr. 18	186	15.80	13.28	14.99
San Jon	55	Oct. 25	Apr. 22	186	15.18	17.14	12.80
Roosevelt							
Portales	50	Oct. 19	Apr. 22	180	16.94	13.35	17.11
Elida	22	Oct. 29	Apr. 17	195	15.09	14.13	8.07
San Miguel							
Las Vegas	68	Oct. 8	May 8	153	15.94	14.08	13.56
Bell Ranch	58	Oct. 21	Apr. 20	184	14.52	12.18	12.79
Torrance							
Estancia	42	Oct. 2	May 19	136	12.03	9.96	9.24
Union							
Clayton	56	Oct. 20	Apr. 26	177	14.51	10.43	12.86
Des Moines	46	Oct. 4	May 14	143	17.91	13.54	12.71
Catron							
Quemado	33	Sept. 23	June 7	108	10.40	8.71	11.65
Grant							
Ft. Bayard	64	Oct. 24	Apr. 27	180	14.41	15.54	13.45
Hidalgo							
Lordsburg	36	Nov. 4	Apr. 3	215	10.10	10.60	9.96
Animas	34	Oct. 29	Apr. 23	189	9.99	11.64	12.25
Luna							
Deming	66	Nov. 2	Apr. 4	212	8.84	9.11	6.30
Hachita	45	Nov. 5	Apr. 10	209	9.54	11.33	—
Sierra							
Caballo Dam	26	Nov. 5	Apr. 3	216	18.62	13.59	5.74
Winston	16	Oct. 10	May 15	148	12.14	13.93	11.63
Hillsboro	20	Oct. 30	Apr. 16	197	10.98	16.58	7.80
Socorro							
Socorro	66	Oct. 24	Apr. 10	197	8.75	7.79	6.56
Augustine	31	Sept. 27	May 28	122	10.51	7.49	7.62
Chaves							
Roswell	69	Oct. 30	Apr. 7	206	11.62	11.81	6.30
Elk	51	Oct. 17	Apr. 30	170	15.84	20.62	15.77
Dona Ana							
State University	71	Oct. 28	Apr. 9	202	8.01	6.39	6.11
Hatch	49	Oct. 24	Apr. 10	197	8.94	11.70	7.06
Eddy							
Carlsbad	66	Nov. 5	Apr. 3	216	12.45	13.06	10.16
Artesia	54	Oct. 28	Apr. 13	198	11.33	11.31	5.95
Lea							
Lovington	39	Nov. 1	Apr. 12	203	15.12	16.39	12.43
Jal	21	Oct. 31	Apr. 5	209	11.57	10.93	10.32
Lincoln							
Ft. Stanton	64	Oct. 8	May 7	154	15.51	15.04	8.87
Corona	49	Oct. 15	May 4	164	15.87	15.42	10.66
Otero							
Alamogordo	45	Nov. 5	Apr. 6	213	9.80	12.96	8.42
Cloudercroft	60	Sept. 30	May 17	136	25.74	28.47	24.44

Source: U. S. Department of Commerce, Weather Bureau State Climatologist, Albuquerque, New Mexico.

¹ Annual average for period of record less than 30 years.

1963 CROP SUMMARY

Crop production in New Mexico in 1963 was very high with increases over 1962 in feed grains, broomcorn and cotton. Yield per harvested acre of grain sorghum, barley and peanuts set new records. Average yield for potatoes equaled the 1961 crop, while corn for grain and oats were at the second highest yields per acre of record.

Winter wheat seedings got off to a fair start as soil moisture was short at planting time. However, the crop emerged and made good growth with adequate fall precipitation.

Scattered rain and snow during January maintained soil moisture supplies. Farm activities were limited mainly to ditch lining, weed burning, cotton stalk cutting and plowing as record breaking low temperatures were recorded. An unofficial low temperature of 57 degrees below zero was noted at Gallup.

Moisture supplies were considered as generally adequate by the end of February. Temperatures varied from near normal to as much as 20 degrees above normal during the month. Alfalfa showed some initial growth. However, winter grain growth was slow. Pruning of fruit trees, replanting lettuce, machinery repair, and land preparation were the main activities.

By April 1, agricultural activities were in full swing, as farmers continued land preparation for spring planted crops. Cotton pre-planting irrigation was well under way in southern counties. Non-irrigated wheat was suffering from lack of moisture as no major precipitation was received in major wheat counties during March. Lower elevations were beginning to show signs of both surface and subsoil moisture shortage.

Soil moisture supplies were seriously depleted during April and May. However, spotty rains the last week of May improved the situation in the eastern plains section. As is the usual case, several thousand acres of cotton had to be replanted due to hail damage. Dryland broomcorn and grain sorghum planting got underway by month's end. Preparations got underway for an early wheat harvest. Once again late freezes seriously damaged a potentially good apple crop. By June 1, farmers in the south had completed the first cut of alfalfa while those growers in the north were nearly ready to cut.

Supplies of surface and subsoil moisture continued at low levels for most of the State during June. However, heavy rains and hail in the eastern plains further lowered wheat yields and caused additional replanting of broomcorn and grain sorghum. Several thousand acres of hail-damaged cotton were replanted to grain sorghum. At month's end, wheat harvest was well advanced, barley and oat harvest were underway, broomcorn and grain sorghum planting were virtually complete, and cotton was in generally good condition.

The critical shortage of irrigation supplies, especially runoff, made itself felt during July. Many north-central areas harvested their only cutting of alfalfa and prospects for other crops dimmed rapidly in these areas. Elsewhere, cotton development was ahead of normal with about nine-tenths setting bolls by August 1. Digging Sweet Spanish onions, land preparation for planting winter wheat, and haying occupied most farmers during July.

Shower activity during August brought surface moisture supplies to near adequate levels for the first time since April. However, subsoil moisture continued below average. The State's first bale of cotton was picked during the month. By September 1, major activities were a limited pulling of irrigated broomcorn, haying, apple harvest, lettuce thinning, and some fall seeding of wheat.

1963 CROP SUMMARY (Continued)

Weather during the fall was extremely favorable for maturity and harvest of spring planted crops. A general killing frost did not occur until November 20 — a record late date in many areas. Harvest of most crops was completed much earlier than normal. The dry open weather hastened harvest operations, but was detrimental to fall seeded dryland wheat. A continual need for moisture was noted and winter wheat development was retarded. Fewer cattle than usual were put on wheat pasture. At year's end, activities mainly centered around shredding and stalk cutting of cotton and general maintenance.

The 1963 wheat crop, estimated at 3,800,000 bushels was 11 percent less than 1962 and 16 percent below the 1957-61 average. Yield per harvested acre at 19.0 bushels compares with 20.0 in 1962 and the 5-year average of 20.5 bushels.

For the 4th consecutive year, production of grain sorghum produced by New Mexico farmers was the highest of record. The 13,630,000 bushels produced was about one-third larger than last year and almost three-fourths larger than the 1957-61 average. The 58.0 bushels per harvested acre yield set a new record for the sixth straight year. Yield and production increases were due, in part, to late sorghum plantings on hauled-out irrigated cotton and wheat acreage. The long growing season permitted the crop to reach full maturity.

Barley production, estimated at 1,715,000 bushels in 1963, was up slightly from the 1,702,000 bushels produced in 1962 and nearly one-third above the 5-year average. The record 49.0 bushels per harvested acre is 3 bushels an acre more than the previous record set in 1962, and 9.4 bushels greater than the 1957-61 average.

Acreage of oats harvested for grain continued to decline in 1963. A record low 8,000 acres of oats were threshed for grain. This is 1,000 fewer acres than in 1962 and is one-third less than the 5-year average. The 280,000 bushels produced was about 6 percent less than last year and one-third below average. The 1963 crop was the smallest since 1896. Yield per acre at 35.0 bushels compares with 33.0 bushels in 1962 and the 5-year average of 33.8 bushels.

Production of corn for grain at 492,000 bushels was down 5 percent from the 516,000 bushels harvested for grain in 1962. Yield per acre at 41.0 bushels, is second only to the 43.0 bushel record set last year, and compares with the 1957-61 average of 32.0 bushels.

New Mexico cotton production was estimated at 271,000 bales. This is 3,000 bales or 1 percent more than the 1962 production, but 7 percent below the 5-year average. The 1963 American Egyptian crop of 31,200 bales, which is included in the total crop, compares with 18,000 bales produced in 1962. This was 73 percent greater than the 1962 crop, as a result of increased acreage allotments. Yield per acre for all cotton at 682 pounds was 44 pounds greater than the 1962 yield. The 1963 yield per acre of upland cotton at 711 pounds was 53 pounds above the previous year.

The 1963 broomcorn crop was estimated at 8100 tons. Production was more than a third larger than 1962. Yield per acre at 370 pounds compares with 310 last year and the 5-year average of 302 pounds. Total broomcorn value was estimated at a record \$3,038,000.

Dry bean production in 1963 totaled 88,000 bags compared with 35,000 last year and the 1957-61 average of 103,000 bags. Average yield per acre of 1100 pounds is the highest of record and compares with 500 pounds per acre in 1962 and the 5-year average of 676 pounds.

Production of all hay in 1963, estimated at 795,000 tons, compares with 796,000 tons last year, and the 1957-61 average of 633,000 tons. Alfalfa, which makes up about 90 percent of all hay, yielded 4.50 tons per acre compared with 4.60 tons in 1962 and the 5-year average of 3.64 tons per acre. An extremely late killing frost date during the fall enabled growers to take a full sixth cutting of alfalfa in the major growing areas.

Total value of major crops harvested in New Mexico, estimated at 121 million dollars, was 11 percent more than the value of production in 1962. Cotton, all hay, and grain sorghum continue as the three leading income producers. Value of production of cotton and cottonseed represents 45 percent of the total value of all major crops.

1963 CROP SUMMARY

Crop production in New Mexico in 1963 was very high with increases over 1962 in feed grains, broomcorn and cotton. Yield per harvested acre of grain sorghum, barley and peanuts set new records. Average yield for potatoes equaled the 1961 crop, while corn for grain and oats were at the second highest yields per acre of record.

Winter wheat seedings got off to a fair start as soil moisture was short at planting time. However, the crop emerged and made good growth with adequate fall precipitation.

Scattered rain and snow during January maintained soil moisture supplies. Farm activities were limited mainly to ditch lining, weed burning, cotton stalk cutting and plowing as record breaking low temperatures were recorded. An unofficial low temperature of 57 degrees below zero was noted at Gallup.

Moisture supplies were considered as generally adequate by the end of February. Temperatures varied from near normal to as much as 20 degrees above normal during the month. Alfalfa showed some initial growth. However, winter grain growth was slow. Pruning of fruit trees, replanting lettuce, machinery repair, and land preparation were the main activities.

By April 1, agricultural activities were in full swing, as farmers continued land preparation for spring planted crops. Cotton pre-planting irrigation was well under way in southern counties. Non-irrigated wheat was suffering from lack of moisture as no major precipitation was received in major wheat counties during March. Lower elevations were beginning to show signs of both surface and subsoil moisture shortage.

Soil moisture supplies were seriously depleted during April and May. However, spotty rains the last week of May improved the situation in the eastern plains section. As is the usual case, several thousand acres of cotton had to be replanted due to hail damage. Dryland broomcorn and grain sorghum planting got underway by month's end. Preparations got underway for an early wheat harvest. Once again late freezes seriously damaged a potentially good apple crop. By June 1, farmers in the south had completed the first cut of alfalfa while those growers in the north were nearly ready to cut.

Supplies of surface and subsoil moisture continued at low levels for most of the State during June. However, heavy rains and hail in the eastern plains further lowered wheat yields and caused additional replanting of broomcorn and grain sorghum. Several thousand acres of hail-damaged cotton were replanted to grain sorghum. At month's end, wheat harvest was well advanced, barley and oat harvest were underway, broomcorn and grain sorghum planting were virtually complete, and cotton was in generally good condition.

The critical shortage of irrigation supplies, especially runoff, made itself felt during July. Many north-central areas harvested their only cutting of alfalfa and prospects for other crops dimmed rapidly in these areas. Elsewhere, cotton development was ahead of normal with about nine-tenths setting bolls by August 1. Digging Sweet Spanish onions, land preparation for planting winter wheat, and haying occupied most farmers during July.

Shower activity during August brought surface moisture supplies to near adequate levels for the first time since April. However, subsoil moisture continued below average. The State's first bale of cotton was picked during the month. By September 1, major activities were a limited pulling of irrigated broomcorn, haying, apple harvest, lettuce thinning, and some fall seeding of wheat.

1963 CROP SUMMARY (Continued)

Weather during the fall was extremely favorable for maturity and harvest of spring planted crops. A general killing frost did not occur until November 20—a record late date in many areas. Harvest of most crops was completed much earlier than normal. The dry open weather hastened harvest operations, but was detrimental to fall seeded dryland wheat. A continual need for moisture was noted and winter wheat development was retarded. Fewer cattle than usual were put on wheat pasture. At year's end, activities mainly centered around shredding and stalk cutting of cotton and general maintenance.

The 1963 wheat crop, estimated at 3,800,000 bushels was 11 percent less than 1962 and 16 percent below the 1957-61 average. Yield per harvested acre at 19.0 bushels compares with 20.0 in 1962 and the 5-year average of 20.5 bushels.

For the 4th consecutive year, production of grain sorghum produced by New Mexico farmers was the highest of record. The 13,630,000 bushels produced was about one-third larger than last year and almost three-fourths larger than the 1957-61 average. The 58.0 bushels per harvested acre yield set a new record for the sixth straight year. Yield and production increases were due, in part, to late sorghum plantings on hauled-out irrigated cotton and wheat acreage. The long growing season permitted the crop to reach full maturity.

Barley production, estimated at 1,715,000 bushels in 1963, was up slightly from the 1,702,000 bushels produced in 1962 and nearly one-third above the 5-year average. The record 49.0 bushels per harvested acre is 3 bushels an acre more than the previous record set in 1962, and 9.4 bushels greater than the 1957-61 average.

Acreage of oats harvested for grain continued to decline in 1963. A record low 8,000 acres of oats were threshed for grain. This is 1,000 fewer acres than in 1962 and is one-third less than the 5-year average. The 280,000 bushels produced was about 6 percent less than last year and one-third below average. The 1963 crop was the smallest since 1896. Yield per acre at 35.0 bushels compares with 33.0 bushels in 1962 and the 5-year average of 33.8 bushels.

Production of corn for grain at 492,000 bushels was down 5 percent from the 516,000 bushels harvested for grain in 1962. Yield per acre at 41.0 bushels, is second only to the 43.0 bushel record set last year, and compares with the 1957-61 average of 32.0 bushels.

New Mexico cotton production was estimated at 271,000 bales. This is 3,000 bales or 1 percent more than the 1962 production, but 7 percent below the 5-year average. The 1963 American Egyptian crop of 31,200 bales, which is included in the total crop, compares with 18,000 bales produced in 1962. This was 73 percent greater than the 1962 crop, as a result of increased acreage allotments. Yield per acre for all cotton at 682 pounds was 44 pounds greater than the 1962 yield. The 1963 yield per acre of upland cotton at 711 pounds was 53 pounds above the previous year.

The 1963 broomcorn crop was estimated at 8100 tons. Production was more than a third larger than 1962. Yield per acre at 370 pounds compares with 310 last year and the 5-year average of 302 pounds. Total broomcorn value was estimated at a record \$3,038,000.

Dry bean production in 1963 totaled 88,000 bags compared with 35,000 last year and the 1957-61 average of 103,000 bags. Average yield per acre of 1100 pounds is the highest of record and compares with 500 pounds per acre in 1962 and the 5-year average of 676 pounds.

Production of all hay in 1963, estimated at 795,000 tons, compares with 796,000 tons last year, and the 1957-61 average of 633,000 tons. Alfalfa, which makes up about 90 percent of all hay, yielded 4.50 tons per acre compared with 4.60 tons in 1962 and the 5-year average of 3.64 tons per acre. An extremely late killing frost date during the fall enabled growers to take a full sixth cutting of alfalfa in the major growing areas.

Total value of major crops harvested in New Mexico, estimated at 121 million dollars, was 11 percent more than the value of production in 1962. Cotton, all hay, and grain sorghum continue as the three leading income producers. Value of production of cotton and cottonseed represents 45 percent of the total value of all major crops.

PRINCIPAL CROPS: Acreage, yield, production, value, average 1957-61, annual 1962 and 1963

Commodity	Unit	Acreage harvested			Yield per acre			Production			Season average price		Value of production	
		Average 1957-61	1962	1963 ¹	Average 1957-61	1962	1963 ²	Average 1957-61	1962	1963 ³	1962	1963 ³	1962	1963 ³
		Thous. acres			See unit column			Thousand			Dollars		Thous. dollars	
GENERAL CROPS														
Corn for grain	Bu.	21	12	12	32.0	43.0	41.0	661	516	492	1.43	1.38	738	679
Corn for silage	Tons	12	12	15	13.3	15.0	15.0	161	180	225	—	—	—	—
Corn for forage	Tons	—	5	4	—	—	—	—	—	—	—	—	—	—
All wheat	Bu.	215	213	200	20.5	20.0	19.0	4,510	4,260	3,800	2.05	1.90	8,733	7,220
Oats	Bu.	12	37	38	33.8	33.0	35.0	412	297	280	.84	.87	249	244
Barley	Bu.	32	37	35	39.6	46.0	49.0	1,307	1,702	1,715	1.02	1.01	1,736	1,732
Sorghum grain	Bu.	234	188	235	35.3	54.0	58.0	8,034	10,132	13,630	1.03	1.04	10,457	14,175
Sorghum silage	Tons	19	20	20	9.4	12.0	15.0	183	240	345	—	—	—	—
Sorghum forage	Tons	59	57	63	1.72	2.30	2.00	101	131	130	21.00	23.00	2,751	2,990
Broomcorn	Lbs.	42	38	44	302	310	370	26,380	25,900	28,100	360.00	375.00	2124	3,038
Cotton lint	Lbs.	191	201	190	728	638	682	2,290	2,268	2,271	3,283	3,420	43,838	46,110
Cottonseed	Tons	—	—	—	—	—	—	120	111	112	50.30	56.60	5,583	6,283
Beans, dry	Lbs.	15	7	8	676	509	1,100	4103	435	488	6.60	6.30	231	554
Potatoes	Cwt.	2.8	3.3	2.4	171	165	185	476	544	444	2.55	2.23	1,387	990
Sweetpotatoes	Cwt.	51.5	1.7	1.1	598	85	90	6144	144	99	3.36	4.30	484	426
Peanuts	Lbs.	6	7.5	7.2	1,856	2,120	2,550	11,973	15,900	18,360	.121	.129	1,924	2,368
Sugar beets ⁴	Tons	.6	.2	—	11.9	8.1	—	6.9	1.7	—	12.10	—	21	—
SEED CROPS														
Alfalfa seed	Lbs.	5.7	4.6	5.0	252	180	255	1,452	828	1,275	34.40	40.00	285	510
Sudangrass seed	Lbs.	8.4	6.0	5.0	460	520	550	3,856	3,120	2,750	7.00	5.60	218	154
HAY CROPS														
All hays	Tons	219	227	233	2.88	3.51	3.41	633	796	795	25.30	30.50	20,139	24,248
Alfalfa hay	Tons	154	156	159	3.64	4.60	4.50	560	718	716	—	—	—	—
Clayton hay	Tons	12	15	12	1.29	1.30	1.25	15	20	15	—	—	—	—
Orchard hay	Tons	17	22	24	1.27	1.20	1.30	21	26	31	—	—	—	—
Other tame hay	Tons	15	15	17	1.16	1.00	1.00	17	15	17	—	—	—	—
Peanut hay	Tons	1	1	1	.76	1.00	.90	1	1	1	—	—	—	—
Wild hay	Tons	21	18	20	.86	.90	.75	18	16	15	—	—	—	—
FRUIT AND NUTS														
Pecans, improved	Lbs.	—	—	—	—	—	—	5,600	7,400	6,000	.45	.30	3,330	1,800
Apples	Bu.	—	—	—	—	—	—	553	570	450	2.55	2.15	1,385	860
COMMERCIAL VEGETABLES														
Cantaloups - mid-summer	Cwt.	.6	.9	.3	57	65	60	36	58	18	4.40	2.30	150	41
Carrots - early fall	Cwt.	.8	.2	.2	166	160	195	138	40	35	2.25	2.15	90	75
Lettuce - early spring	Cwt.	1.1	.4	.6	181	270	250	192	94	138	6.30	3.55	592	490
Lettuce - early fall	Cwt.	1.2	.6	.7	175	180	250	200	117	175	5.80	4.10	679	718
Onions - early summer	Cwt.	2.2	2.1	2.0	285	280	320	628	588	640	3.80	4.65	2,234	2,976
Tomatoes - late summer	Cwt.	.7	.6	.5	129	170	135	87	94	68	2.75	3.00	258	204
Tomatoes for processing	Tons	1.0	1.4	1.1	10.1	13.5	11.7	10.0	18.9	12.9	27.50	26.70	520	344

New Mexico Agricultural Statistics

¹ Preliminary.
² Tons.
³ 500 pound gross-weight bales.

⁴ Bags of 100 pounds.
⁵ Short time average.
⁶ Yield per acre and production in short tons.

⁷ Includes production not marketed and excluded in computing value; 27,000 bushels, 1962; 50,000 bushels, 1963

New Mexico Agricultural Statistics

FARM INCOME:

Realized gross and net income of farm operators from farming, and total, 1959-1962

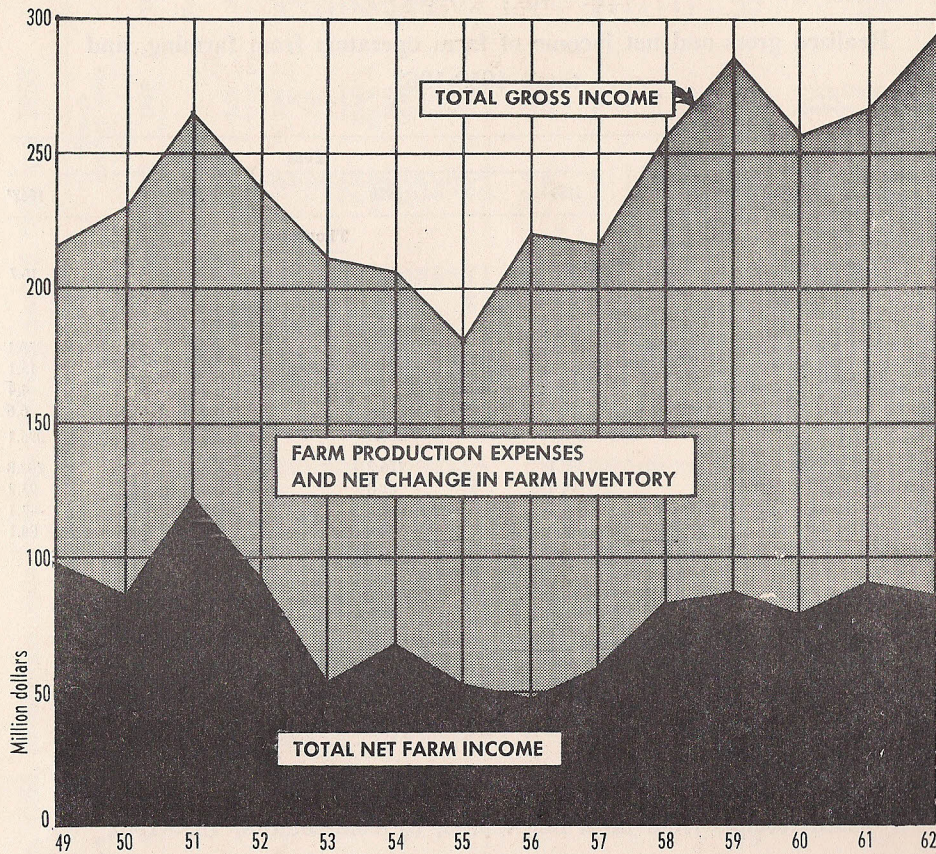
Item	Year		
	1959	1960	1961
Number of farms	19.0	18.2	17.4
Thousand			
Cash receipts from farm marketings	259.6	235.2	244.5
Government payments	14.9	11.2	14.1
Value of home consumption	5.7	5.2	4.8
Gross rental value of farm dwellings	7.3	6.4	6.4
TOTAL	287.5	258.0	269.8
Farm production expenses	193.1	176.2	195.3
Realized net farm income	94.4	81.8	74.5
Net changes in farm inventories	-6.3	-2.7	16.6
Total net farm income	88.0	79.1	91.1
Million dollars			
Number of farms	19.0	18.2	17.4
Thousand			
Cash receipts from farm marketings	259.6	235.2	244.5
Government payments	14.9	11.2	14.1
Value of home consumption	5.7	5.2	4.8
Gross rental value of farm dwellings	7.3	6.4	6.4
TOTAL	287.5	258.0	269.8
Farm production expenses	193.1	176.2	195.3
Realized net farm income	94.4	81.8	74.5
Net changes in farm inventories	-6.3	-2.7	16.6
Total net farm income	88.0	79.1	91.1

Cash receipts from farm marketings, by commodities, 1959-1962

Commodity	Year		
	1959	1960	1961
Thousand dollars			
Cattle and calves	117,574	113,162	121,279
Sheep and lambs	7,351	5,639	6,180
Wool	5,053	4,026	4,498
Cotton lint	69,118	48,663	43,390
Cottonseed	5,411	4,665	5,435
Wheat	5,308	8,363	13,019
Sorghum grain	6,108	6,421	6,328
Hay	8,037	8,270	7,396
Broomcorn	1,675	1,377	1,547
Dry edible beans	563	535	535
Apples	631	652	645
Peanuts	1,352	1,209	1,897
Pecans	1,983	3,021	1,154

¹ Preliminary.

Gross and Net Farm Income, 1949-1962



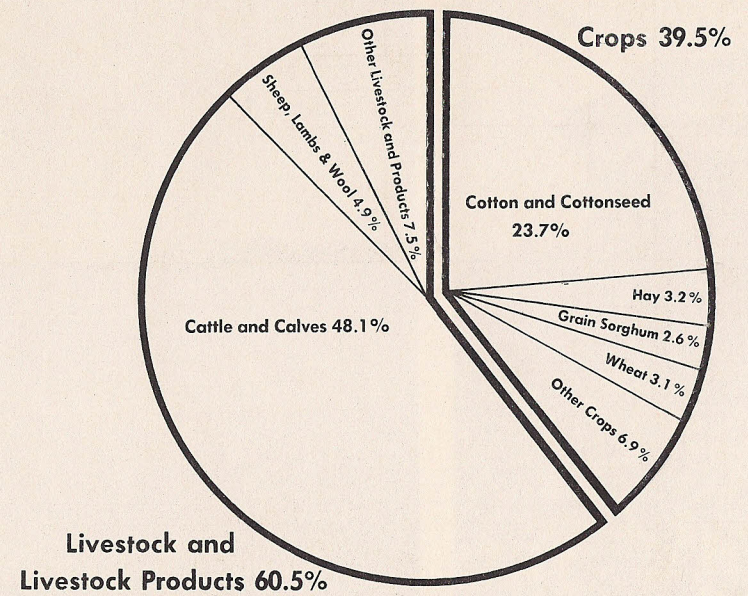
TOTAL NET INCOME: New Mexico and Adjoining States, average per farm, 1949-1962

Year	STATES				
	New Mexico	Arizona	Texas	Colorado	Utah
	Dollars				
1949	3717	9408	3456	3973	2384
1950	3368	11021	2780	3218	2482
1951	4969	19983	3358	4625	3610
1952	3870	19033	2923	4601	3208
1953	2337	16885	2467	3308	2388
1954	3079	16362	2653	2199	2327
1955	2415	13717	2481	1715	2407
1956	2253	15462	2058	1980	2196
1957	2934	15361	2634	3741	2885
1958	4282	15849	3909	4560	2182
1959	4634	14610	3679	3735	2364
1960	4345	16056	3427	4566	2201
1961	5238	19032	4365	4290	1984
1962 ¹	5156	21828	4297	3593	2914

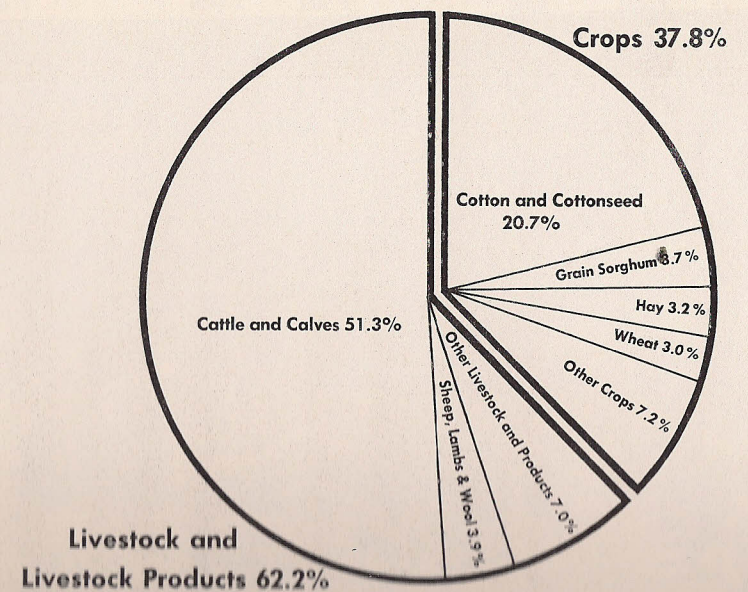
¹ Preliminary.

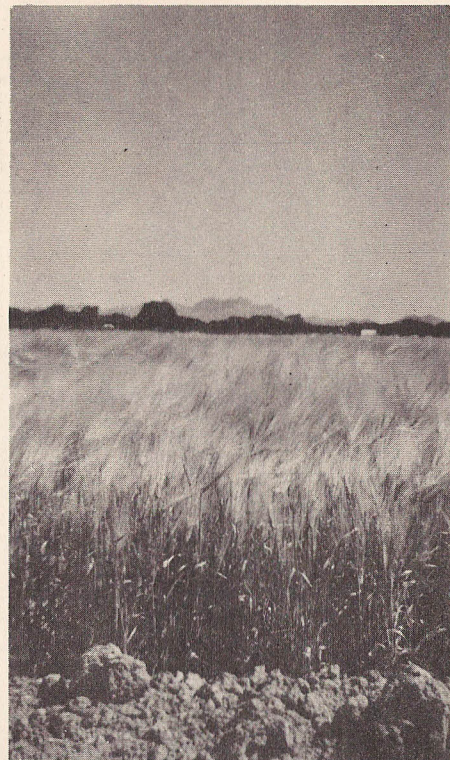
CASH RECEIPTS FROM FARM MARKETINGS BY COMMODITIES

1957-1961 AVERAGE



1962





GRAIN STOCKS: Quantities stored on and off farms, 1962, 1963, and 1964

Year	On farms				Off farms			
	Jan. 1	Apr. 1	July 1	Oct. 1	Jan. 1	Apr. 1	July 1	Oct. 1
	Thou. bushels				Thou. bushels			
	WHEAT							
1962 -----	480	360	160	504	4,906	3,594	2,925	4,467
1963 -----	256	128	84	385	4,644	5,000	3,975	4,693
1964 ¹ -----	266	95			3,393	3,072		
	CORN							
1962 -----	247	121	58	16	43	52	26	37
1963 -----	289	160	66	31	25	47	19	16
1964 ¹ -----	394	182			29	20		
	OATS							
1962 -----	122	80	23	178	21	19	6	35
1963 -----	98	62	15	140	29	36	5	20
1964 ¹ -----	73	39			11	19		
	BARLEY							
1962 -----	608	304	101	511	106	94	16	62
1963 -----	238	170	60	343	28	22	8	32
1964 ¹ -----	223	120			27	19		
	GRAIN SORGHUM							
1962 -----	2,234	745	466	140	6,502	5,465	4,669	4,227
1963 -----	1,523	812	254	203	7,065	6,900	4,657	3,937
1964 ¹ -----	2,317	818			8,144	5,469		

¹ Preliminary.

HAY STOCKS: Quantities stored on farms, 1962, 1963, and 1964

1962		1963		1964 ¹	
Jan. 1	May 1	Jan. 1	May 1	Jan. 1	May 1
Thousand Tons					
311	94	310	72	358	64

¹ Preliminary.

COTTONSEED: Production, farm disposition, price, and value, 1961, 1962, and 1963

Year	Farm disposition			Season average price per ton	Value of production
	Production	Sold	Used on farms ¹		
	Thou. tons	Thou. tons	Thou. tons	Dollars	Thou. dollars
1961 -----	124	119	5	54.60	6,770
1962 -----	111	107	4	50.30	5,583
1963 -----	112	108	4	56.10	6,283

¹ Includes amount used for planting crop of succeeding year.

WINTER WHEAT: Acreage, yield, and production, by counties, irrigated and non-irrigated, 1962^{1 2}

County	Acres planted			Acres harvested			Yield per harvested acre			Production		
	Irrig.	Non-irrig.	Total	Irrig.	Non-irrig.	Total	Irrig.	Non-irrig.	Total	Irrig.	Non-irrig.	Total
	Acres	Acres	Acres	Acres	Acres	Acres	Bushels	Bushels	Bushels	Bushels	Bushels	Bushels
Bernalillo	150	850	1000	100	650	750	29.0	10.0	12.5	2900	6500	9400
McKinley	50	250	300	50	100	150	14.0	7.0	9.3	700	700	1400
Rio Arriba	350	3950	4300	150	2800	2950	20.0	7.0	7.7	3000	19600	22600
Sandoval	500	200	700	150	50	200	21.3	10.0	18.5	3200	500	3700
San Juan	550	150	700	300	50	350	27.3	12.0	25.1	8200	600	8800
Santa Fe	500	1100	1600	300	100	400	24.7	12.0	21.5	7400	1200	8600
Taos	550	50	600	350	50	400	17.1	8.0	16.0	6000	400	6400
Valencia	1150	150	1300	750	50	800	26.5	8.0	25.4	19900	400	20300
Northwest District	3800	6700	10500	2150	3850	6000	23.9	7.8	13.5	51300	29900	81200
Colfax	1500	2500	4000	900	2000	2900	25.0	14.0	17.4	22500	28000	50500
Curry	44000	87000	131000	43000	72300	115300	37.3	16.0	24.0	1606000	1156000	2762000
De Baca	300	0	300	250	0	250	33.2	—	33.2	8300	—	8300
Harding	150	8850	9000	100	6600	6700	30.0	11.0	11.3	3000	72600	75600
Mora	200	400	600	100	300	400	23.0	10.0	13.2	2300	3000	5300
Quay	3700	63300	67000	3000	45500	48500	35.1	14.1	15.4	105400	641100	746500
Roosevelt	5000	31300	36300	3400	24800	28200	35.3	13.0	15.7	120000	322400	442400
San Miguel	250	150	400	150	150	300	24.7	11.3	18.0	3700	1700	5400
Torrance	1300	2800	4100	650	1100	1750	26.0	12.0	17.2	16900	13200	30100
Union	500	2300	2800	350	1750	2100	34.0	14.3	17.6	11900	25000	36900
Northeast District	56900	198600	255500	51900	154500	206400	36.6	14.6	20.2	1900000	2263000	4163000
Catron	20	30	50	20	10	30	30.0	14.0	24.7	600	140	740
Grant	580	20	600	90	20	110	32.2	14.0	28.9	2900	280	3180
Hidalgo	50	0	50	0	0	0	—	—	—	—	—	—
Luna	180	0	180	0	0	0	—	—	—	—	—	—
Sierra	20	0	20	0	0	0	—	—	—	—	—	—
Socorro	100	50	150	90	20	110	27.8	14.0	25.3	2500	280	2780
Southwest District	950	100	1050	200	50	250	30.0	14.0	26.8	6000	700	6700
Chaves	350	0	350	180	0	180	31.4	—	31.4	5650	—	5650
Dona Ana	20	0	20	0	0	0	—	—	—	—	—	—
Eddy	50	0	50	40	0	40	30.0	—	30.0	1200	—	1200
Lea	320	80	400	20	80	100	27.5	13.8	16.5	550	1100	1650
Lincoln	60	0	60	0	0	0	—	—	—	—	—	—
Otero	50	20	70	10	20	30	30.0	15.0	20.0	300	300	600
Southeast District	850	100	950	250	100	350	30.8	14.0	26.0	7700	1400	9100
State	62500	205500	268000	54500	158500	213000	36.1	14.5	20.0	1965000	2295000	4260000

New Mexico Agricultural Statistics

¹ Includes a small acreage of spring wheat. ² Revised.

WINTER WHEAT: Acreage, yield, and production, by counties, irrigated and non-irrigated, 1963^{1 2}

County	Acres planted			Acres harvested			Yield per harvested acre			Production		
	Irrig.	Non-irrig.	Total	Irrig.	Non-irrig.	Total	Irrig.	Non-irrig.	Total	Irrig.	Non-irrig.	Total
	Acres	Acres	Acres	Acres	Acres	Acres	Bushels	Bushels	Bushels	Bushels	Bushels	Bushels
Bernalillo	150	1050	1200	100	250	350	33.0	8.8	15.7	3300	2200	5500
McKinley	30	220	250	0	140	140	—	7.9	7.9	—	1100	1100
Rio Arriba	300	4100	4400	150	3450	3600	16.7	7.0	7.4	2500	24000	26500
Sandoval	500	250	750	200	160	360	14.5	7.5	11.4	2900	1200	4100
San Juan	420	180	600	400	100	500	33.8	12.0	29.4	13500	1200	14700
Santa Fe	450	1150	1600	350	50	400	34.6	12.8	21.8	12100	6400	18500
Taos	500	0	500	400	0	400	18.0	—	18.0	7200	—	7200
Valencia	950	450	1400	750	50	800	26.0	8.0	24.9	19500	400	19900
Northwest District	3300	7400	10700	2350	4650	7000	26.0	7.8	13.9	61000	36500	97500
Colfax	1600	2800	4400	930	1370	2300	35.7	13.1	22.2	33200	17900	51100
Curry	47000	92000	139000	42000	60000	102000	37.0	12.1	22.4	1552000	728000	2280000
De Baca	280	0	280	120	0	120	10.8	—	10.8	1300	—	1300
Guadalupe	20	0	20	0	0	0	—	—	—	—	—	—
Harding	250	8450	8700	250	2450	2700	30.4	10.0	11.9	7600	24500	32100
Mora	350	450	800	100	250	350	18.0	7.2	10.3	1800	1800	3600
Quay	4000	66000	70000	3000	47500	50500	31.0	15.0	15.9	93000	712000	805000
Roosevelt	4500	35500	40000	3100	27900	31000	33.5	13.0	15.0	104000	362000	466000
San Miguel	300	200	500	150	80	230	26.0	12.5	21.3	3900	1000	4900
Torrance	1000	3500	4500	300	1300	1600	30.0	10.6	14.2	9000	13800	22800
Union	400	2400	2800	250	1450	1700	32.8	9.0	12.5	8200	13000	21200
Northeast District	59700	211300	271000	50200	142300	192500	36.1	13.2	19.2	1814000	1874000	3688000
Catron	50	50	100	40	0	40	25.0	—	25.0	1000	—	1000
Grant	700	200	900	80	0	80	30.0	—	30.0	2400	—	2400
Hidalgo	30	0	30	0	0	0	—	—	—	—	—	—
Luna	200	0	200	0	0	0	—	—	—	—	—	—
Sierra	20	0	20	0	0	0	—	—	—	—	—	—
Socorro	150	0	150	30	0	30	20.0	—	20.0	600	—	600
Southwest District	1150	250	1400	150	0	150	26.7	—	26.7	4000	—	4000
Chaves	300	0	300	160	0	160	33.1	—	33.1	5300	—	5300
Dona Ana	30	0	30	30	0	30	30.0	—	30.0	900	—	900
Eddy	50	0	50	20	0	20	30.0	—	30.0	600	—	600
Lea	320	50	370	50	50	100	32.0	10.0	21.0	1600	500	2100
Lincoln	80	0	80	0	0	0	—	—	—	—	—	—
Otero	70	0	70	40	0	40	40.0	—	40.0	1600	—	1600
Southeast District	850	50	900	300	50	350	33.3	10.0	30.0	10000	500	10500
State	65000	219000	284000	53000	147000	200000	35.6	13.0	19.0	1889000	1911000	3800000

New Mexico Agricultural Statistics

¹ Includes a small acreage of spring wheat. ² Preliminary.

ALL SORGHUMS: Acreage, yield, and production, by counties, irrigated and non-irrigated, 1962

County	Acres planted all purposes			Harvested for grain								
	Irrig.	Non-irrig.	Total	Acres			Yield per acre			Production		
				Irrig.	Non-irrig.	Total	Irrig.	Non-irrig.	Total	Irrig.	Non-irrig.	Total
Acres	Acres	Acres	Acres	Acres	Acres	Acres	Bushels	Bushels	Bushels	Bushels	Bushels	Bushels
Bernalillo	80	0	80	60	0	60	70.0	—	70.0	4200	—	4200
McKinley	10	0	10	0	0	0	—	—	—	—	—	—
Rio Arriba	200	0	200	40	0	40	35.0	—	35.0	1400	—	1400
Sandoval	50	0	50	0	0	0	—	—	—	—	—	—
San Juan	60	0	60	0	0	0	—	—	—	—	—	—
Santa Fe	60	0	60	0	0	0	—	—	—	—	—	—
Taos	40	0	40	0	0	0	—	—	—	—	—	—
Valencia	1200	0	1200	500	0	500	50.8	—	50.8	25400	—	25400
Northwest District	1700	0	1700	600	0	600	51.7	—	51.7	31000	—	31000
Colfax	600	1200	1800	50	100	150	34.0	20.0	24.7	1700	2000	3700
Curry	38000	43000	81000	35000	32000	67000	92.4	22.0	58.8	3234000	704000	3938000
De Baca	700	100	800	400	100	500	75.0	20.0	64.0	30000	2000	32000
Guadalupe	200	0	200	30	0	30	33.3	—	33.3	1000	—	1000
Harding	1200	300	1500	370	300	670	35.7	20.0	28.7	13200	6000	19200
Mora	100	100	200	20	0	20	30.0	—	30.0	600	—	600
Quay	11000	17000	28000	9500	5500	15000	68.6	22.9	51.9	652000	126000	778000
Roosevelt	15400	49600	65000	10100	33300	43400	73.1	27.6	38.2	738000	920000	1658000
San Miguel	100	100	200	30	0	30	36.7	—	36.7	1100	—	1100
Torrance	700	300	1000	200	0	200	42.0	—	42.0	8400	—	8400
Union	1700	25300	27000	1300	15700	17000	71.5	27.0	30.4	93000	424000	517000
Northeast District	69700	137000	206700	57000	87000	144000	83.7	25.1	48.3	4773000	2184000	6957000
Catron	20	0	20	20	0	20	35.0	—	35.0	700	—	700
Grant	380	0	380	200	0	200	77.5	—	77.5	15500	—	15500
Hidalgo	4600	0	4600	3600	0	3600	96.4	—	96.4	347000	—	347000
Luna	10000	0	10000	9000	0	9000	93.5	—	93.5	841900	—	841900
Sierra	100	0	100	50	0	50	60.0	—	60.0	3000	—	3000
Socorro	500	0	500	230	0	230	73.5	—	73.5	16900	—	16900
Southwest District	15600	0	15600	13100	0	13100	93.5	—	93.5	1225000	—	1225000
Chaves	9500	0	9500	4600	0	4600	90.2	—	90.2	415000	—	415000
Dona Ana	900	0	900	450	0	450	85.6	—	85.6	38500	—	38500
Eddy	2200	0	2200	1000	0	1000	84.0	—	84.0	84000	—	84000
Lea	28000	3000	31000	22000	2000	24000	60.8	24.0	57.7	1337000	48000	1385000
Lincoln	100	0	100	50	0	50	50.0	—	50.0	2500	—	2500
Otero	1300	0	1300	200	0	200	70.0	—	70.0	14000	—	14000
Southeast District	42000	3000	45000	28300	2000	30300	66.8	24.0	64.0	1891000	48000	1939000
State	129000	140000	269000	99000	89000	188000	80.0	25.1	54.0	7920000	2232000	10152000

New Mexico Agricultural Statistics

ALL SORGHUMS: Acreage, yield, and production, by counties, irrigated and non-irrigated, 1963¹

County	Acres planted all purposes			Harvested for grain								
	Irrig.	Non-irrig.	Total	Acres			Yield per acre			Production		
				Irrig.	Non-irrig.	Total	Irrig.	Non-irrig.	Total	Irrig.	Non-irrig.	Total
Acres	Acres	Acres	Acres	Acres	Acres	Acres	Bushels	Bushels	Bushels	Bushels	Bushels	Bushels
Bernalillo	80	0	80	30	0	30	60.0	—	60.0	1800	—	1800
Rio Arriba	100	0	100	20	0	20	35.0	—	35.0	700	—	700
Sandoval	50	0	50	0	0	0	—	—	—	—	—	—
San Juan	70	0	70	0	0	0	—	—	—	—	—	—
Santa Fe	90	0	90	0	0	0	—	—	—	—	—	—
Taos	10	0	10	0	0	0	—	—	—	—	—	—
Valencia	1200	0	1200	450	0	450	50.0	—	50.0	22500	—	22500
Northwest District	1600	0	1600	500	0	500	50.0	—	50.0	25000	—	25000
Colfax	500	2000	2500	100	100	200	35.0	20.0	27.5	3500	2000	5500
Curry	56000	47000	103000	53000	37000	90000	100.6	22.8	68.6	5332000	844000	6176000
De Baca	1100	100	1200	660	0	660	84.8	—	84.8	56000	—	56000
Guadalupe	200	0	200	30	0	30	33.3	—	33.3	1000	—	1000
Harding	2000	600	2600	760	300	1060	36.7	8.0	28.6	27900	2400	30300
Mora	200	200	400	20	0	20	30.0	—	30.0	600	—	600
Quay	16100	17900	34000	12900	8900	21800	73.5	18.0	50.8	948000	160000	1108000
Roosevelt	27000	52000	79000	17000	34000	51000	79.0	22.0	41.0	1342700	748000	2090700
San Miguel	200	0	200	130	0	130	38.5	—	38.5	5000	—	5000
Torrance	1100	300	1400	100	0	100	43.0	—	43.0	4300	—	4300
Union	1600	25900	27500	1300	15700	17000	72.3	21.6	25.5	94000	339600	433600
Northeast District	106000	146000	252000	86000	96000	182000	90.9	21.8	54.5	7815000	2096000	9911000
Catron	20	0	20	10	0	10	40.0	—	40.0	400	—	400
Grant	500	0	500	250	0	250	78.0	—	78.0	19500	—	19500
Hidalgo	5600	0	5600	3600	0	3600	105.8	—	105.8	381000	—	381000
Luna	11500	0	11500	10000	0	10000	95.1	—	95.1	951000	—	951000
Sierra	150	0	150	80	0	80	67.5	—	67.5	5400	—	5400
Socorro	530	0	530	360	0	360	90.8	—	90.8	32700	—	32700
Southwest District	18300	0	18300	14300	0	14300	97.2	—	97.2	1390000	—	1390000
Chaves	11500	0	11500	4000	0	4000	81.0	—	81.0	324000	—	324000
Dona Ana	900	0	900	450	0	450	80.0	—	80.0	36000	—	36000
Eddy	2200	0	2200	1000	0	1000	78.0	—	78.0	78000	—	78000
Lea	37000	3000	40000	30500	2000	32500	59.2	22.0	57.0	1807000	44000	1851000
Lincoln	100	0	100	50	0	50	50.0	—	50.0	2500	—	2500
Otero	1400	0	1400	200	0	200	62.5	—	62.5	12500	—	12500
Southeast District	53100	3000	56100	36200	2000	38200	62.4	22.0	60.3	2260000	44000	2304000
State	179000	149000	328000	137000	98000	235000	83.9	21.8	58.0	11490000	2140000	13630000

New Mexico Agricultural Statistics

¹ Preliminary.

CORN: Acreage, yield, and production, by counties, irrigated and non-irrigated, 1962¹

County	Acres planted all purposes	Harvested for grain								
		Acres			Yield per acre			Production		
		Irrig.	Non-irrig.	Total	Irrig.	Non-irrig.	Total	Irrig.	Non-irrig.	Total
Acres	Acres	Acres	Acres	Bushels	Bushels	Bushels	Bushels	Bushels	Bushels	
Bernalillo	1000	280	20	300	60.7	12.5	57.5	17000	250	17250
McKinley	1300	500	300	800	30.0	10.0	22.5	15000	3000	18000
Rio Arriba	500	80	20	100	25.0	12.5	22.5	2000	250	2250
Sandoval	1600	560	40	600	35.0	11.2	33.4	19600	450	20050
San Juan	4900	2700	400	3100	59.3	12.0	53.2	160100	4800	164900
Santa Fe	1300	330	20	350	30.0	12.5	29.0	9500	250	10150
Taos	400	350	0	350	21.1	—	21.1	7400	—	7400
Valencia	2000	400	0	400	30.0	—	30.0	12000	—	12000
Northwest District	13000	5200	800	6000	46.7	11.2	42.0	243000	9000	252000
Colfax	2600	250	250	500	50.0	15.6	32.8	12500	3900	16400
Curry	1400	450	50	500	61.1	13.0	56.3	27500	650	28150
De Baca	100	50	0	50	46.0	—	46.0	2300	—	2300
Guadalupe	200	100	0	100	29.0	—	29.0	2900	—	2900
Harding	150	0	100	100	—	13.0	13.0	—	1300	1300
Mora	700	250	150	400	35.2	10.0	25.8	8800	1500	10300
Quay	450	100	50	150	45.0	16.0	35.3	4500	800	5300
Roosevelt	800	250	50	300	77.6	15.0	67.2	19400	750	20150
San Miguel	800	150	150	300	35.3	10.0	22.7	5300	1500	6800
Torrance	2800	1050	250	1300	51.0	10.8	43.2	53500	2700	56200
Union	300	50	50	100	50.0	14.0	32.0	2500	700	3200
Northeast District	10300	2700	1100	3800	51.6	12.5	40.3	139200	13800	153000
Catron	100	30	20	50	36.7	18.0	29.2	1100	360	1460
Grant	500	170	80	250	60.0	15.5	45.8	10200	1240	11440
Hidalgo	450	100	0	100	55.0	—	55.0	5500	—	5500
Luna	550	250	0	250	64.4	—	64.4	16100	—	16100
Sierra	400	150	0	150	50.0	—	50.0	7500	—	7500
Socorro	500	200	0	200	45.0	—	45.0	9000	—	9000
Southwest District	2500	900	100	1000	54.9	16.0	51.0	49400	1600	51000
Chaves	1200	500	0	500	55.0	—	55.0	27500	—	27500
Dona Ana	1000	200	0	200	50.0	—	50.0	10000	—	10000
Eddy	300	50	0	50	50.0	—	50.0	2500	—	2500
Lea	1300	200	50	250	51.5	15.0	44.2	10300	750	11050
Lincoln	100	30	20	50	50.0	17.0	36.8	1500	340	1840
Otero	300	120	30	150	55.0	17.0	47.4	6600	510	7110
Southeast District	4200	1100	100	1200	53.1	16.0	50.0	58400	1600	60000
State	30000	9900	2100	12000	49.5	12.4	43.0	490000	26000	516000

New Mexico Agricultural Statistics

¹ Revised.

CORN: Acreage, yield, and production, by counties, irrigated and non-irrigated, 1963¹

County	Acres planted all purposes	Harvested for grain								
		Acres			Yield per acre			Production		
		Irrig.	Non-irrig.	Total	Irrig.	Non-irrig.	Total	Irrig.	Non-irrig.	Total
Acres	Acres	Acres	Acres	Bushels	Bushels	Bushels	Bushels	Bushels	Bushels	
Bernalillo	1000	300	0	300	56.7	—	56.7	17000	—	17000
McKinley	1700	600	400	1000	28.3	11.0	21.4	17000	4400	21400
Rio Arriba	500	100	0	100	25.0	—	25.0	2500	—	2500
Sandoval	1200	350	50	400	34.3	9.0	31.1	12000	450	12450
San Juan	4900	2450	150	2600	59.2	8.7	56.3	145000	1300	146300
Santa Fe	1600	200	150	350	36.5	10.0	25.1	7300	1500	8800
Taos	600	450	0	450	22.0	—	22.0	9900	—	9900
Valencia	1500	250	50	300	29.2	7.0	25.5	7300	350	7650
Northwest District	13000	4700	800	5500	46.4	10.0	41.1	218000	8000	226000
Colfax	3000	200	300	500	40.0	8.0	20.8	8000	2400	10400
Curry	1750	250	50	300	66.4	18.0	58.3	16600	900	17500
De Baca	100	50	0	50	50.0	—	50.0	2500	—	2500
Guadalupe	200	100	0	100	25.0	—	25.0	2500	—	2500
Harding	150	0	100	100	—	8.0	8.0	—	800	800
Mora	500	100	50	150	33.0	8.0	24.7	3300	400	3700
Quay	300	100	50	150	33.0	20.0	28.7	3300	1000	4300
Roosevelt	1000	250	50	300	80.0	8.0	68.0	20000	400	20400
San Miguel	1000	300	400	700	30.0	10.0	18.6	9000	4000	13000
Torrance	3100	1250	250	1500	55.0	10.4	47.6	68800	2600	71400
Union	400	0	250	250	—	10.0	10.0	—	2500	2500
Northeast District	11500	2600	1500	4100	51.5	10.0	36.3	134000	15000	149000
Catron	80	60	20	80	25.0	10.0	21.2	1500	200	1700
Grant	520	140	80	220	60.0	10.0	41.8	8400	800	9200
Hidalgo	450	100	0	100	60.0	—	60.0	6000	—	6000
Luna	550	250	0	250	72.0	—	72.0	18000	—	18000
Sierra	400	150	0	150	50.0	—	50.0	7500	—	7500
Socorro	700	400	0	400	45.0	—	45.0	18000	—	18000
Southwest District	2700	1100	100	1200	54.0	10.0	50.3	59400	1000	60400
Chaves	1700	500	0	500	55.0	—	55.0	27500	—	27500
Dona Ana	1100	200	0	200	50.0	—	50.0	10000	—	10000
Eddy	200	50	0	50	50.0	—	50.0	2500	—	2500
Lea	1400	200	50	250	54.0	9.0	45.0	10800	450	11250
Lincoln	100	30	20	50	31.7	11.0	23.4	950	220	1170
Otero	300	120	30	150	32.1	11.0	27.9	3850	330	4180
Southeast District	4800	1100	100	1200	50.5	10.0	47.2	55600	1000	56600
State	32000	9500	2500	12000	49.2	10.0	41.0	467000	25000	492000

New Mexico Agricultural Statistics

¹ Preliminary.

OATS: Acreage, yield, and production, by counties, irrigated and non-irrigated, 1962

County	Acres planted all purposes	Acres harvested			Yield per harvested acre			Production		
		Irrig.	Non-irrig.	Total	Irrig.	Non-irrig.	Total	Irrig.	Non-irrig.	Total
	Acres	Acres	Acres	Acres	Bushels	Bushels	Bushels	Bushels	Bushels	Bushels
Bernalillo	500	80	20	100	40.0	15.0	35.0	3200	300	3500
McKinley	1000	50	0	50	26.0	—	26.0	1300	—	1300
Rio Arriba	1500	200	200	400	25.0	13.0	19.0	5000	2600	7600
Sandoval	600	100	0	100	33.0	—	33.0	3300	—	3300
San Juan	800	400	0	400	39.0	—	39.0	15600	—	15600
Santa Fe	400	150	0	150	40.0	—	40.0	6000	—	6000
Taos	1200	350	100	450	27.7	12.0	24.2	9700	1200	10900
Valencia	2400	270	80	350	33.0	16.2	29.1	8900	1300	10200
Northwest District	8400	1600	400	2000	33.1	13.5	29.2	53000	5400	58400
Colfax	6700	1450	450	1900	29.0	16.0	25.9	42000	7200	49200
Curry	3600	650	450	1100	48.0	20.0	36.5	31200	9000	40200
De Baca	200	100	0	100	42.0	—	42.0	4200	—	4200
Guadalupe	150	50	0	50	26.0	—	26.0	1300	—	1300
Harding	500	0	50	50	—	14.0	14.0	—	700	700
Mora	2600	200	250	450	28.0	10.0	18.0	5600	2500	8100
Quay	1100	400	150	550	35.0	18.0	30.4	14000	2700	16700
Roosevelt	350	100	50	150	43.0	22.0	36.0	4300	1100	5400
San Miguel	3500	100	150	250	26.0	10.0	16.4	2600	1500	4100
Torrance	200	0	0	0	—	—	—	—	—	—
Union	600	50	50	100	36.0	18.0	27.0	1800	900	2700
Northeast District	19500	3100	1600	4700	34.5	16.0	28.2	107000	25600	132600
Catron	50	0	0	0	—	—	—	—	—	—
Grant	800	150	0	150	40.0	—	40.0	6000	—	6000
Hidalgo	300	50	0	50	40.0	—	40.0	2000	—	2000
Luna	250	100	0	100	40.0	—	40.0	4000	—	4000
Sierra	100	0	0	0	—	—	—	—	—	—
Socorro	200	0	0	0	—	—	—	—	—	—
Southwest District	1700	300	0	300	40.0	—	40.0	12000	—	12000
Chaves	1300	550	0	550	44.0	—	44.0	24200	—	24200
Dona Ana	200	50	0	50	46.0	—	46.0	2300	—	2300
Eddy	1500	850	0	850	50.0	—	50.0	42500	—	42500
Lea	500	250	0	250	44.0	—	44.0	11000	—	11000
Lincoln	100	0	0	0	—	—	—	—	—	—
Otero	800	300	0	300	46.7	—	46.7	14000	—	14000
Southeast District	4400	2000	0	2000	47.0	—	47.0	94000	—	94000
State	34000	7000	2000	9000	38.0	15.5	33.0	266000	31000	297000

New Mexico Agricultural Statistics

OATS: Acreage, yield, and production, by counties, irrigated and non-irrigated, 1963¹

County	Acres planted all purposes	Acres harvested			Yield per harvested acre			Production		
		Irrig.	Non-irrig.	Total	Irrig.	Non-irrig.	Total	Irrig.	Non-irrig.	Total
	Acres	Acres	Acres	Acres	Bushels	Bushels	Bushels	Bushels	Bushels	Bushels
Bernalillo	500	80	20	100	37.5	20.0	34.0	3000	400	3400
McKinley	1000	50	0	50	20.0	—	20.0	1000	—	1000
Rio Arriba	2800	250	250	500	20.0	17.2	18.6	5000	4300	9300
Sandoval	800	100	0	100	28.0	—	28.0	2800	—	2800
San Juan	800	300	0	300	35.0	—	35.0	10500	—	10500
Santa Fe	600	150	0	150	31.2	—	31.2	5300	—	5300
Taos	1000	250	50	300	31.2	14.0	28.3	7800	700	8500
Valencia	3000	220	80	300	30.0	20.0	27.3	6600	1600	8200
Northwest District	10500	1400	400	1800	30.0	17.5	27.2	42000	7000	49000
Colfax	5700	1300	400	1700	29.1	10.5	24.7	37800	4200	42000
Curry	3000	200	100	300	44.0	15.0	34.3	8800	1500	10300
De Baca	200	0	0	0	—	—	—	—	—	—
Guadalupe	100	50	0	50	24.0	—	24.0	1200	—	1200
Harding	300	0	50	50	—	20.0	20.0	—	1000	1000
Mora	2600	200	250	450	24.0	15.2	19.1	4800	3800	8600
Quay	700	300	0	300	29.0	—	29.0	8700	—	8700
Roosevelt	500	100	50	150	39.9	20.0	32.7	3900	1000	4900
San Miguel	3000	100	100	200	22.0	10.0	16.0	2200	1000	3200
Torrance	300	0	0	0	—	—	—	—	—	—
Union	500	50	50	100	32.0	10.0	21.0	1600	500	2100
Northeast District	16900	2300	1000	3300	30.0	13.0	24.8	69000	13000	82000
Catron	50	0	0	0	—	—	—	—	—	—
Grant	1000	180	0	180	37.2	—	37.2	6700	—	6700
Hidalgo	250	70	0	70	40.0	—	40.0	2800	—	2800
Luna	700	150	0	150	40.0	—	40.0	6000	—	6000
Sierra	100	0	0	0	—	—	—	—	—	—
Socorro	300	0	0	0	—	—	—	—	—	—
Southwest District	2400	400	0	400	38.8	—	38.8	15500	—	15500
Chaves	1650	650	0	650	50.8	—	50.8	33000	—	33000
Dona Ana	500	50	0	50	50.0	—	50.0	2500	—	2500
Eddy	1600	1000	0	1000	56.5	—	56.5	56500	—	56500
Lea	900	500	0	500	54.0	—	54.0	27000	—	27000
Lincoln	50	0	0	0	—	—	—	—	—	—
Otero	500	300	0	300	48.3	—	48.3	14500	—	14500
Southeast District	5200	2500	0	2500	53.4	—	53.4	133500	—	133500
State	35000	6600	1400	8000	39.4	14.3	35.0	260000	20000	280000

New Mexico Agricultural Statistics

¹ Preliminary.

BARLEY: Acreage, yield, and production, by counties, irrigated and non-irrigated, 1962

County	Acres planted all purposes	Acres harvested			Yield per harvested acre			Production		
		Irrig.	Non-irrig.	Total	Irrig.	Non-irrig.	Total	Irrig.	Non-irrig.	Total
	Acres	Acres	Acres	Acres	Bushels	Bushels	Bushels	Bushels	Bushels	Bushels
Bernalillo	300	80	20	100	35.0	17.5	31.5	2800	350	3150
McKinley	100	30	20	50	30.0	15.0	24.0	900	300	1200
Rio Arriba	1100	500	100	600	33.0	15.0	30.0	16500	1500	18000
Sandoval	100	40	10	50	30.0	15.0	27.0	1200	150	1350
San Juan	800	600	0	600	35.0	—	35.0	21000	—	21000
Santa Fe	800	500	100	600	38.0	16.0	34.3	19000	1600	20600
Taos	1400	950	50	1000	32.0	14.0	31.1	30400	700	31100
Valencia	1200	500	0	500	34.0	—	34.0	17000	—	17000
Northwest District	5800	3200	300	3500	34.0	15.3	32.4	108800	4600	113400
Colfax	1200	750	150	900	34.0	16.7	31.1	25500	2500	28000
Curry	5900	1500	2800	4300	40.0	17.6	25.4	60000	49200	109200
De Baca	400	250	0	250	42.0	—	42.0	10500	—	10500
Guadalupe	100	0	0	0	—	—	—	—	—	—
Harding	400	0	250	250	—	16.8	16.8	—	4200	4200
Mora	400	150	50	200	34.0	14.0	29.0	5100	700	5800
Quay	2300	500	800	1300	38.0	17.0	25.1	19000	13600	32600
Roosevelt	3000	1300	300	1600	40.0	15.0	35.3	52000	4500	56500
San Miguel	500	50	50	100	34.0	14.0	24.0	1700	700	2400
Torrance	1000	350	50	400	44.0	16.0	40.5	15400	800	16200
Union	500	150	50	200	38.7	16.0	33.0	5800	800	6600
Northeast District	15700	5000	4500	9500	39.0	17.1	28.6	195000	77000	272000
Catron	300	100	100	200	37.0	16.0	26.5	3700	1600	5300
Grant	500	300	0	300	42.0	—	42.0	12600	—	12600
Hidalgo	2400	1600	0	1600	55.0	—	55.0	88000	—	88000
Luna	2700	1800	0	1800	55.0	—	55.0	99000	—	99000
Sierra	1300	700	0	700	45.0	—	45.0	31500	—	31500
Socorro	600	400	0	400	50.0	—	50.0	20000	—	20000
Southwest District	7800	4900	100	5000	52.0	16.0	51.3	254800	1600	256400
Chaves	16300	9900	0	9900	59.2	—	59.2	586000	—	586000
Dona Ana	4400	3200	0	3200	60.0	—	60.0	192000	—	192000
Eddy	5900	3500	0	3500	55.0	—	55.0	192500	—	192500
Lea	3500	2050	50	2100	38.0	18.0	37.5	77900	900	78800
Lincoln	50	30	0	30	40.0	—	40.0	1200	—	1200
Otero	550	220	50	270	40.0	18.0	35.9	8800	900	9700
Southeast District	30700	18900	100	19000	56.0	18.0	55.8	1058400	1800	1060200
State	60000	32000	5000	37000	50.5	17.0	46.0	1617000	85000	1702000

New Mexico Agricultural Statistics

BARLEY: Acreage, yield, and production, by counties, irrigated and non-irrigated, 1963¹

County	Acres planted all purposes	Acres harvested			Yield per harvested acre			Production		
		Irrig.	Non-irrig.	Total	Irrig.	Non-irrig.	Total	Irrig.	Non-irrig.	Total
	Acres	Acres	Acres	Acres	Bushels	Bushels	Bushels	Bushels	Bushels	Bushels
Bernalillo	600	270	130	400	37.0	15.4	30.0	10000	2000	12000
McKinley	100	30	20	50	30.0	15.0	24.0	900	300	1200
Rio Arriba	1000	500	100	600	33.0	15.0	30.0	16500	1500	18000
Sandoval	100	0	50	50	—	15.0	15.0	—	750	750
San Juan	800	600	0	600	35.0	—	35.0	21000	—	21000
Santa Fe	1100	500	200	700	40.0	14.8	32.8	20000	2950	22950
Taos	1100	800	0	800	31.2	—	31.2	25000	—	25000
Valencia	1600	600	0	600	34.0	—	34.0	20400	—	20400
Northwest District	6400	3300	500	3800	34.5	15.0	31.9	113800	7500	121300
Colfax	500	50	150	200	28.0	17.3	20.0	1400	2600	4000
Curry	4300	1050	2250	3300	38.1	17.7	24.2	40000	39800	79800
De Baca	400	150	0	150	20.0	—	20.0	3000	—	3000
Guadalupe	100	0	0	0	—	—	—	—	—	—
Mora	100	100	0	100	30.0	—	30.0	3000	—	3000
Quay	1800	150	0	150	22.7	—	22.7	3400	—	3400
Roosevelt	2800	1100	300	1400	34.1	15.0	30.0	37500	4500	42000
San Miguel	400	0	0	0	—	—	—	—	—	—
Torrance	700	350	50	400	32.9	16.0	30.8	11500	800	12300
Union	500	150	50	200	37.3	16.0	32.0	5600	800	6400
Northeast District	11600	3100	2800	5900	34.0	17.3	26.1	105400	48500	153900
Catron	300	100	100	200	37.0	20.0	28.5	3700	2000	5700
Grant	600	400	0	400	42.0	—	42.0	16800	—	16800
Hidalgo	2900	2200	0	2200	55.0	—	55.0	121000	—	121000
Luna	3000	2000	0	2000	54.5	—	54.5	109000	—	109000
Sierra	1600	800	0	800	64.1	—	64.1	51300	—	51300
Socorro	600	400	0	400	40.0	—	40.0	16000	—	16000
Southwest District	9000	5900	100	6000	53.9	20.0	53.3	317800	2000	319800
Chaves	14600	9200	0	9200	54.3	—	54.3	500000	—	500000
Dona Ana	4400	3300	0	3300	71.2	—	71.2	235000	—	235000
Eddy	5900	3500	0	3500	60.1	—	60.1	210500	—	210500
Lea	3500	2950	50	3000	55.0	20.0	54.4	162300	1000	163300
Lincoln	50	30	0	30	40.0	—	40.0	1200	—	1200
Otero	550	220	50	270	40.9	20.0	37.0	9000	1000	10000
Southeast District	29000	19200	100	19300	58.2	20.0	58.0	1118000	2000	1120000
State	56000	31500	3500	35000	52.5	17.1	49.0	1655000	60000	1715000

New Mexico Agricultural Statistics

¹ Preliminary.

ALL COTTON: Acreage, yield, and production, by counties, irrigated and non-irrigated, 1962

County	Acres planted			Acres harvested			Yield per harvested acre			Production (500 pound gross weight bales)		
	Irrig.	Non-irrig.	Total	Irrig.	Non-irrig.	Total	Irrig.	Non-irrig.	Total	Irrig.	Non-irrig.	Total
	Acres	Acres	Acres	Acres	Acres	Acres	Pounds	Pounds	Pounds	Bales	Bales	Bales
Valencia	30	0	30	30	0	30	400	—	400	25	—	25
Northwest District	30	0	30	30	0	30	400	—	400	25	—	25
Curry	1200	250	1450	1080	220	1300	610	159	534	1377	73	1450
De Baca	545	0	545	500	0	500	350	—	350	365	—	365
Quay	3270	0	3270	2980	0	2980	578	—	578	3600	—	3600
Roosevelt	14800	3700	18500	13450	3250	16700	718	210	619	20175	1425	21600
Northeast District	19815	3950	23765	18010	3470	21480	678	207	602	25517	1498	27015
Grant	95	0	95	90	0	90	900	—	900	170	—	170
Hidalgo	7300	0	7300	6920	0	6920	906	—	906	13100	—	13100
Luna	15600	0	15600	14600	0	14600	822	—	822	25100	—	25100
Sierra	2950	0	2950	2880	0	2880	693	—	693	4170	—	4170
Socorro	2170	0	2170	2060	0	2060	697	—	697	3000	—	3000
Southwest District	28115	0	28115	26550	0	26550	821	—	821	45540	—	45540
Chaves	35200	0	35200	33200	0	33200	716	—	716	49700	—	49700
Dona Ana	61400	0	61400	60200	0	60200	609	—	609	76600	—	76600
Eddy	29900	0	29900	28000	0	28000	608	—	608	35600	—	35600
Lea	29400	1600	31000	27620	1480	29100	520	220	505	30019	681	30700
Otero	2590	0	2590	2440	0	2440	553	—	553	2820	—	2820
Southeast District	158490	1600	160090	151460	1480	152940	615	220	611	194739	681	195420
State	206450	5550	212000	196050	4950	201000	649	211	638	265821	2179	268000

ALL COTTON: Acreage, yield, and production, by counties, irrigated and non-irrigated, 1963

County	Acres planted			Acres harvested			Yield per harvested acre			Production (500 pound gross weight bales)		
	Irrig.	Non-irrig.	Total	Irrig.	Non-irrig.	Total	Irrig.	Non-irrig.	Total	Irrig.	Non-irrig.	Total
	Acres	Acres	Acres	Acres	Acres	Acres	Pounds	Pounds	Pounds	Bales	Bales	Bales
Curry	1140	200	1340	1130	200	1330	412	350	403	973	147	1120
De Baca	495	0	495	40	0	40	250	—	250	20	—	20
Quay	2770	0	2770	2610	0	2610	607	—	607	3310	—	3310
Roosevelt	14500	3100	17600	13330	2870	16200	570	300	523	15890	1810	17700
Northeast District	18905	3300	22205	17110	3070	20180	565	303	525	20193	1957	22150
Grant	105	0	105	100	0	100	670	—	670	140	—	140
Hidalgo	6300	0	6300	6225	0	6225	899	—	899	11700	—	11700
Luna	14300	0	14300	13285	0	13285	965	—	965	26800	—	26800
Sierra	2830	0	2830	2775	0	2775	801	—	801	4650	—	4650
Socorro	1970	0	1970	1885	0	1885	832	—	832	3280	—	3280
Southwest District	25505	0	25505	24270	0	24270	918	—	918	46570	—	46570
Chaves	31400	0	31400	30130	0	30130	810	—	810	51000	—	51000
Dona Ana	66700	0	66700	65505	0	65505	664	—	664	90900	—	90900
Eddy	26900	0	26900	26435	0	26435	700	—	700	38700	—	38700
Lea	27860	1440	29300	20540	1160	21700	431	240	421	18516	584	19100
Otero	1990	0	1990	1780	0	1780	693	—	693	2580	—	2580
Southeast District	154850	1440	156290	144390	1160	145550	668	240	665	201696	584	202280
State	199260	4740	204000	185770	4230	190000	691	286	682	268459	2541	271000

AMERICAN EGYPTIAN COTTON: Acreage, yield, and production by counties, all irrigated, 1962 and 1963

County	1962				1963			
	Acres		Yield per harvested acre	Production (500 pound gross weight bales)	Acres		Yield per harvested acre	Production (500 pound gross weight bales)
	Planted	Harvested	Pounds	Bales	Planted	Harvested	Pounds	Bales
Hidalgo	0	0	—	—	35	30	467	29
Luna	55	50	460	48	190	170	512	182
Sierra	225	215	326	146	345	340	459	326
Southwest District	280	265	351	194	570	540	476	537
Chaves	0	0	—	—	50	40	450	38
Dona Ana	19040	18675	452	17695	28270	27840	522	30358
Eddy	150	140	314	92	255	225	471	221
Otero	30	20	450	19	55	55	400	46
Southeast District	19220	18835	451	17806	28630	28160	521	30663
State	19500	19100	450	18000	29200	28700	520	31200

UPLAND COTTON: Acreage, yield, and production, by counties, irrigated and non-irrigated, 1962

County	Acres planted			Acres harvested			Yield per harvested acre			Production (500 pound gross weight bales)		
	Irrig.	Non-irrig.	Total	Irrig.	Non-irrig.	Total	Irrig.	Non-irrig.	Total	Irrig.	Non-irrig.	Total
	Acres	Acres	Acres	Acres	Acres	Acres	Pounds	Pounds	Pounds	Bales	Bales	Bales
Valencia	30	0	30	30	0	30	400	—	400	25	—	25
Northwest District	30	0	30	30	0	30	400	—	400	25	—	25
Curry	1200	250	1450	1080	220	1300	610	159	534	1377	73	1450
De Baca	545	0	545	500	0	500	350	—	350	365	—	365
Quay	3270	0	3270	2980	0	2980	578	—	578	3600	—	3600
Roosevelt	14800	3700	18500	13450	3250	16700	718	210	619	20175	1425	21600
Northeast District	19815	3950	23765	18010	3470	21480	678	207	602	25517	1498	27015
Grant	95	0	95	90	0	90	900	—	900	170	—	170
Hidalgo	7300	0	7300	6920	0	6920	906	—	906	13100	—	13100
Luna	15545	0	15545	14550	0	14550	824	—	824	25052	—	25052
Sierra	2725	0	2725	2665	0	2665	722	—	722	4024	—	4024
Socorro	2170	0	2170	2060	0	2060	697	—	697	3000	—	3000
Southwest District	27835	0	27835	26285	0	26285	825	—	825	45346	—	45346
Chaves	35200	0	35200	33200	0	33200	716	—	716	49700	—	49700
Dona Ana	42360	0	42360	41525	0	41525	679	—	679	58905	—	58905
Eddy	29750	0	29750	27860	0	27860	610	—	610	35508	—	35508
Lea	29400	1600	31000	27620	1480	29100	520	220	505	30019	681	30700
Otero	2560	0	2560	2420	0	2420	554	—	554	2801	—	2801
Southeast District	139270	1600	140870	132625	1480	134105	638	220	634	176933	681	177614
State	186950	5550	192500	176950	4950	181900	670	211	658	247821	2179	250000

UPLAND COTTON: Acreage, yield, and production, by counties, irrigated and non-irrigated, 1963

County	Acres planted			Acres harvested			Yield per harvested acre			Production (500 pound gross weight bales)		
	Irrig.	Non-irrig.	Total	Irrig.	Non-irrig.	Total	Irrig.	Non-irrig.	Total	Irrig.	Non-irrig.	Total
	Acres	Acres	Acres	Acres	Acres	Acres	Pounds	Pounds	Pounds	Bales	Bales	Bales
Curry	1140	200	1340	1130	200	1330	412	350	403	973	147	1120
De Baca	495	0	495	40	0	40	250	—	250	20	—	20
Quay	2770	0	2770	2610	0	2610	607	—	607	3310	—	3310
Roosevelt	14500	3100	17600	13330	2870	16200	570	300	523	15890	1810	17700
Northeast District	18905	3300	22205	17110	3070	20180	565	303	525	20193	1957	22150
Grant	105	0	105	100	0	100	670	—	670	140	—	140
Hidalgo	6265	0	6265	6195	0	6195	901	—	901	11671	—	11671
Luna	14110	0	14110	13115	0	13115	971	—	971	26618	—	26618
Sierra	2485	0	2485	2435	0	2435	849	—	849	4324	—	4324
Socorro	1970	0	1970	1885	0	1885	832	—	832	3280	—	3280
Southwest District	24935	0	24935	23730	0	23730	928	—	928	46033	—	46033
Chaves	31350	0	31350	30090	0	30090	810	—	810	50962	—	50962
Dona Ana	38430	0	38430	37665	0	37665	769	—	769	60542	—	60542
Eddy	26645	0	26645	26210	0	26210	702	—	702	38479	—	38479
Lea	27860	1440	29300	20540	1160	21700	431	240	421	18516	584	19100
Otero	1935	0	1935	1725	0	1725	703	—	703	2534	—	2534
Southeast District	126220	1440	127660	116230	1160	117390	704	240	699	171033	584	171617
State	170060	4740	174800	157070	4230	161300	722	286	711	237259	2541	239800

New Mexico Agricultural Statistics

New Mexico Agricultural Statistics

24

25

ALFALFA HAY: Acreage, yield, and production, by counties, practically all irrigated, 1962 and 1963

County	1962			1963 ¹		
	Acres harvested	Yield per acre	Production	Acres harvested	Yield per acre	Production
	Acres	Tons	Tons	Acres	Tons	Tons
Bernalillo	4600	3.5	16100	4900	4.0	19600
McKinley	600	2.0	1200	600	3.0	1800
Rio Arriba	4200	2.0	8600	4700	1.4	6800
Sandoval	1800	2.8	5000	2000	2.2	4300
San Juan	9200	3.5	32200	9300	3.6	33700
Santa Fe	2900	3.2	9300	3300	3.0	9900
Taos	6000	1.9	11400	5800	1.8	10600
Valencia	11200	3.4	38200	11900	3.7	44300
Northwest District	40500	3.01	122000	42500	3.08	131000
Colfax	7200	2.5	18000	8500	2.1	17900
Curry	400	5.0	2000	400	5.5	2200
De Baca	2000	6.0	12000	2300	5.3	12200
Guadalupe	1000	2.5	2500	1000	2.5	2500
Harding	400	2.5	1000	200	2.5	500
Mora	3600	2.8	10100	3600	2.6	9400
Quay	4800	3.5	16800	5500	4.6	25400
Roosevelt	2800	5.3	14800	2600	5.9	15400
San Miguel	2000	2.5	5000	2100	2.5	5200
Torrance	4100	4.2	17400	4100	5.2	21500
Union	2200	2.0	4400	2200	1.7	3800
Northeast District	30500	3.41	104000	32500	3.57	116000
Catron	300	3.3	1000	300	5.0	1500
Grant	1700	4.5	7600	1700	4.3	7300
Hidalgo	1200	5.1	6100	1100	5.0	5500
Luna	1200	5.2	6200	1200	5.1	6100
Sierra	1200	4.0	4800	1200	6.0	7200
Socorro	3400	4.8	16300	3500	4.7	16400
Southwest District	9000	4.67	42000	9000	4.89	44000
Chaves	31700	6.7	212200	31200	6.7	208500
Dona Ana	10800	4.7	50800	9200	5.1	47100
Eddy	26000	5.9	153300	27000	5.0	135200
Lea	4700	5.0	23500	5200	4.8	24700
Lincoln	1600	3.0	4800	1400	3.9	5500
Otero	1200	4.5	5400	1000	4.0	4000
Southeast District	76000	5.92	450000	75000	5.67	425000
State	156000	4.60	718000	159000	4.50	716000

¹ Preliminary.

ALL HAY: Acreage, yield, and production, by counties, 1962 and 1963

County	1962 ¹			1963 ²		
	Acres harvested	Yield per acre	Production	Acres harvested	Yield per acre	Production
	Acres	Tons	Tons	Acres	Tons	Tons
Bernalillo	5100	3.3	17000	5500	3.8	20800
McKinley	1000	1.7	1700	1300	1.9	2500
Rio Arriba	13600	1.5	20100	15200	1.3	19800
Sandoval	2900	2.2	6300	3200	1.7	5500
San Juan	10300	3.3	34400	10500	3.4	35400
Santa Fe	3500	2.9	10000	4000	2.6	10500
Taos	10000	1.6	15500	10300	1.6	16100
Valencia	13100	3.1	40500	14000	3.4	47400
Northwest District	59500	2.45	145500	64000	2.47	158000
Colfax	20000	1.5	29100	20400	1.4	28600
Curry	2500	2.1	5200	2700	1.7	4500
De Baca	2600	5.0	12900	3400	4.1	13900
Guadalupe	1100	2.4	2600	1100	2.4	2600
Harding	3500	0.7	2500	1000	0.9	900
Mora	12500	1.4	17200	13700	1.3	18000
Quay	6100	3.0	18100	6900	4.0	27400
Roosevelt	4200	3.9	16200	4700	3.7	17500
San Miguel	5600	1.4	8000	5600	1.4	8000
Torrance	4900	3.7	18200	5000	4.6	22800
Union	8500	1.1	9500	8500	1.0	8800
Northeast District	71500	1.95	139500	73000	2.10	153000
Catron	600	2.2	1300	600	3.2	1900
Grant	2400	3.7	8900	2500	3.5	8800
Hidalgo	1700	4.1	7000	1700	3.8	6500
Luna	1800	4.1	7300	1800	3.9	7100
Sierra	1600	3.2	5200	1300	5.6	7300
Socorro	3900	4.4	17300	4100	4.2	17400
Southwest District	12000	3.92	47000	12000	4.08	49000
Chaves	33700	6.4	216600	33200	6.4	211500
Dona Ana	11600	4.5	52600	10100	4.8	48000
Eddy	27000	5.7	154800	28500	4.8	136700
Lea	6500	4.0	26200	7700	3.5	27200
Lincoln	3100	2.3	7100	2500	2.6	6600
Otero	2100	3.2	6700	2000	2.5	5000
Southeast District	84000	5.52	464000	84000	5.18	435000
State	227000	3.51	796000	233000	3.41	795000

¹ Revised.

² Preliminary.

ALFALFA SEED: Acreage, yield, and production, by counties, all irrigated, 1962 and 1963

County	1962			1963 ¹		
	Acres harvested	Yield per acre	Production	Acres harvested	Yield per acre	Production
	Acres	Pounds	Pounds	Acres	Pounds	Pounds
Quay	60	583	35000	50	200	10000
Union	250	132	33000	50	200	10000
Northeast District	310	219	68000	50	200	10000
Southwest District	60	167	10000	50	280	14000
Chaves	1500	169	253000	2700	196	530000
Dona Ana	1000	265	265000	650	434	282000
Eddy	1700	135	229000	1500	286	429000
Lea	30	100	3000	50	200	10000
Southeast District	4230	177	750000	4900	255	1251000
State	4600	180	828000	5000	255	1275000

¹ Preliminary

BROOMCORN: Acreage, yield, and production, by counties, irrigated and non-irrigated, 1962

County	Acres harvested			Yield per harvested acre			Production			
	Acres planted	Irrig.	Non-irrig.	Total	Irrig.	Non-irrig.	Total	Irrig.	Non-irrig.	Total
Curry	200	50	150	200	400	320	340	10	24	34
Harding	400	50	350	400	400	285	300	10	50	60
Quay	17950	2400	14800	17200	325	265	275	390	1965	2350
Roosevelt	16500	4950	11400	16350	485	295	350	1199	1682	2881
Union	3800	0	3700	3700	275	275	275	1609	506	506
Northwest District	38850	7450	30400	37850	430	280	310	1609	4228	5837
Lea	150	150	0	150	840	---	840	63	---	63
Southeast District	150	150	0	150	840	---	840	63	---	63
State	39000	7600	30400	38000	440	280	310	1672	4228	5900

BROOMCORN: Acreage, yield, and production, by counties, irrigated and non-irrigated, 1963¹

County	Acres harvested			Yield per harvested acre			Production			
	Acres planted	Irrig.	Non-irrig.	Total	Irrig.	Non-irrig.	Total	Irrig.	Non-irrig.	Total
Curry	450	250	200	450	550	330	455	69	33	102
Guadalupe	250	0	0	250	480	355	370	12	89	101
Harding	600	50	500	550	400	330	340	520	270	3290
Quay	19900	2600	16900	19500	400	305	390	1720	2375	4915
Roosevelt	21200	5300	15700	21000	650	310	310	2321	512	7900
Union	2050	0	2000	2000	565	315	365	2321	5579	7900
Northwest District	44450	8200	35300	43500	800	---	800	200	---	200
Lea	550	500	0	500	800	---	800	200	---	200
Southeast District	550	500	0	500	800	---	800	200	---	200
State	45000	8700	35300	44000	580	315	370	2521	5579	8100

¹ Preliminary.

POTATOES: Acreage, yield, and production, by counties, all irrigated, 1962 and 1963

County	1962				1963			
	Acres		Yield per harvested acre	Production	Acres		Yield per harvested acre	Production
	Planted	Harvested			Planted	Harvested		
Santa Fe	200	200	200	40000	250	250	200	50000
Taos	1600	1500	130	195000	400	400	170	68000
Valencia	150	150	200	30000	200	200	210	42000
Other counties	150	150	107	16000	250	150	150	22500
Northwest District	2100	2000	140	281000	1100	1000	182	182500
Torrance	1200	1200	207	248000	1200	1200	193	231500
Other counties	100	100	150	15000	200	200	150	30000
Northeast District	1300	1300	202	263000	1400	1400	187	261500
State	3400	3300	165	544000	2500	2400	185	444000

SWEETPOTATOES: Acreage, yield, and production, by counties, all irrigated, 1962 and 1963

County	1962				1963 ¹			
	Acres		Yield per harvested acre	Production	Acres		Yield per harvested acre	Production
	Planted	Harvested			Planted	Harvested		
Roosevelt	1850	1650	85	140000	1200	1000	91	91000
Northwest District	1850	1650	85	140000	1200	1000	91	91000
Southeast District	50	50	80	4000	100	100	80	8000
State	1900	1700	85	144000	1300	1100	90	99000

¹ Preliminary.

PEANUTS PICKED AND THRESHED: Acreage, yield, and production, by counties, all irrigated, 1962 and 1963

County	1962			1963		
	Acres harvested	Yield per acre	Production	Acres harvested	Yield per acre	Production
Curry	2	1,150	2,300	4	1,500	6,000
Quay	0	---	---	64	1,891	121,000
Roosevelt	7,276	2,139	15,564,000	6,882	2,601	17,900,000
Northwest District	7,278	2,139	15,566,300	6,950	2,594	18,027,000
Lea	222	1,503	333,700	250	1,332	333,000
Southeast District	222	1,503	333,700	250	1,332	333,000
State	7,500	2,120	15,900,000	7,200	2,550	18,360,000

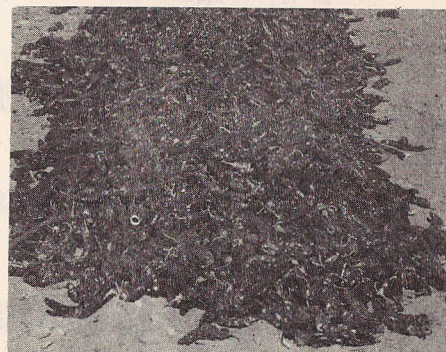
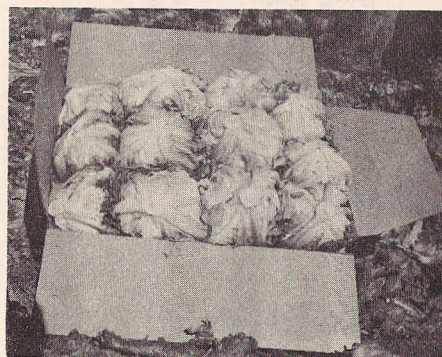
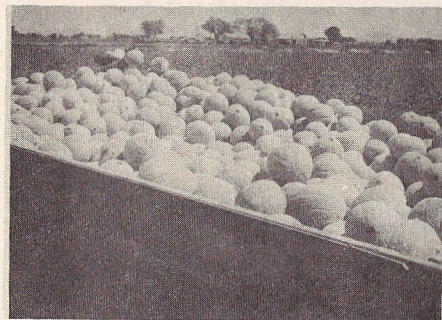
ALL DRY BEANS: Acreage, yield, and production, by counties, irrigated and non-irrigated, 1962

County	Acres planted for all purposes	Acres harvested			Yield per harvested acre			Production		
		Irrig.	Non-irrig.	Total	Irrig.	Non-irrig.	Total	Irrig.	Non-irrig.	Total
		Acres	Acres	Acres	Pounds	Pounds	Pounds	100 lb. bags	100 lb. bags	100 lb. bags
Bernalillo	300	0	250	250	—	200	200	—	500	500
McKinley	1800	0	1700	1700	—	100	100	—	1700	1700
Rio Arriba	50	30	20	50	600	100	400	180	20	200
Sandoval	50	20	30	50	600	100	300	120	30	150
San Juan	450	300	0	300	900	—	900	2700	—	2700
Santa Fe	250	50	150	200	500	135	225	250	200	450
Taos	100	30	20	50	500	250	400	150	50	200
Valencia	500	70	230	300	500	110	200	350	250	600
Northwest District	3500	500	2400	2900	750	115	225	3750	2750	6500
Colfax	250	50	100	150	600	150	300	300	150	450
Guadalupe	100	100	0	100	500	—	500	500	—	500
Mora	100	50	50	100	600	100	350	300	50	350
Quay	100	50	0	50	600	—	600	300	—	300
San Miguel	150	50	50	100	600	100	350	300	50	350
Torrance	2050	950	900	1850	700	145	430	6650	1300	7950
Northeast District	2750	1250	1100	2350	670	140	420	8350	1550	9900
Hidalgo	250	250	0	250	1370	—	1370	3430	—	3430
Luna	1100	1100	0	1100	1245	—	1245	13670	—	13670
Socorro	300	100	200	300	600	100	270	600	200	800
Southwest District	1650	1450	200	1650	1220	100	1085	17700	200	17900
Southeast District	100	100	0	100	700	—	700	700	—	700
State	8000	3300	3700	7000	925	120	500	30500	4500	35000

ALL DRY BEANS: Acreage, yield, and production, by counties, irrigated and non-irrigated, 1963¹

County	Acres planted for all purposes	Acres harvested			Yield per harvested acre			Production		
		Irrig.	Non-irrig.	Total	Irrig.	Non-irrig.	Total	Irrig.	Non-irrig.	Total
		Acres	Acres	Acres	Pounds	Pounds	Pounds	100 lb. bags	100 lb. bags	100 lb. bags
Bernalillo	300	0	300	300	—	470	470	—	1410	1410
McKinley	2500	0	2500	2500	—	630	630	—	15800	15800
Rio Arriba	50	30	20	50	965	450	760	290	90	380
Sandoval	50	20	30	50	1200	400	720	240	120	360
San Juan	200	200	0	200	2415	—	2415	4830	—	4830
Santa Fe	300	100	200	300	830	415	555	830	830	1660
Taos	100	80	20	100	560	250	500	450	50	500
Valencia	400	170	230	400	625	260	415	1060	600	1660
Northwest District	3900	600	3300	3900	1285	570	680	7700	18900	26600
Colfax	100	50	50	100	1300	400	850	650	200	850
Guadalupe	100	100	0	100	1140	—	1140	1140	—	1140
Mora	100	50	50	100	1300	400	850	650	200	850
Quay	10	10	0	10	1100	—	1100	110	—	110
San Miguel	190	90	100	190	500	100	290	450	100	550
Torrance	1800	1500	300	1800	1120	400	1000	16800	1200	18000
Northeast District	2300	1800	500	2300	1100	340	935	19800	1700	21500
Hidalgo	400	400	0	400	1825	—	1825	7300	—	7300
Luna	1100	1100	0	1100	2600	—	2600	28600	—	28600
Socorro	100	100	0	100	1700	—	1700	1700	—	1700
Southwest District	1600	1600	0	1600	2350	—	2350	37600	—	37600
Southeast District	200	200	0	200	1150	—	1150	2300	—	2300
State	8000	4200	3800	8000	1605	540	1100	67400	20600	88000

¹ Preliminary.



LETTUCE-EARLY SPRING: Acreage, yield, and production, by counties, all irrigated, 1962 and 1963

County	1962 ¹				1963			
	Acres		Yield per harvested acre	Production	Acres		Yield per harvested acre	Production
	Planted	Harvested			Planted	Harvested		
Bernalillo	20	15	140	2100	15	15	160	2400
Valencia	35	35	140	4900	65	65	169	11000
Northwest District	55	50	140	7000	80	80	168	13400
Chaves	10	10	150	1500	0	0	—	—
Dona Ana	325	290	298	85500	500	470	265	124600
Southeast District	335	300	293	87000	500	470	265	124600
State	390	350	270	94000	580	550	250	138000

¹ Revised.

LETTUCE-EARLY FALL: Acreage, yield, and production, by counties, all irrigated, 1962 and 1963

County	1962				1963			
	Acres		Yield per harvested acre	Production	Acres		Yield per harvested acre	Production
	Planted	Harvested			Planted	Harvested		
Bernalillo	10	10	130	1300	0	0	—	—
Valencia	40	40	140	5600	320	120	163	19600
Northwest District	50	50	138	6900	320	120	163	19600
Torrance	0	0	—	—	50	50	162	8100
Northeast District	0	0	—	—	50	50	162	8100
Dona Ana	650	600	184	110100	630	530	278	147300
Southeast District	650	600	184	110100	630	530	278	147300
State	700	650	180	117000	1000	700	250	175000

TOMATOES FOR PROCESSING: Acreage, yield, and production, by counties, all irrigated, 1962 and 1963

County	1962				1963			
	Acres		Yield per harvested acre	Production	Acres		Yield per harvested acre	Production
	Planted	Harvested			Planted	Harvested		
	Acres	Acres	Tons	Tons	Acres	Acres	Tons	Tons
Luna	1350	1250	13.2	16500	1200	1010	11.1	11180
Southwest District	1350	1250	13.2	16500	1200	1010	11.1	11180
Otero	150	150	16.0	2400	100	90	19.1	1720
Southeast District	150	150	16.0	2400	100	90	19.1	1720
State	1500	1400	13.5	18900	1300	1100	11.7	12900

TOMATOES-FRESH MARKET-LATE SUMMER: Acreage, yield, and production, by counties, all irrigated, 1962 and 1963

County	1962				1963			
	Acres		Yield per harvested acre	Production	Acres		Yield per harvested acre	Production
	Planted	Harvested			Planted	Harvested		
	Acres	Acres	Cwt.	Cwt.	Acres	Acres	Cwt.	Cwt.
Bernalillo	10	10	110	1100	10	10	110	1100
Sandoval	30	30	100	3000	30	30	100	3000
San Juan	20	20	110	2200	20	20	110	2200
Valencia	150	150	100	15000	140	130	60	7800
Northwest District	210	210	101	21300	200	190	74	14100
Curry	10	10	120	1200	10	10	120	1200
Quay	100	100	100	10000	50	50	100	5000
Roosevelt	20	20	100	2000	20	20	100	2000
Northeast District	130	130	102	13200	80	80	102	8200
Luna	25	25	160	4000	25	25	116	2900
Sierra	25	25	140	3500	25	25	140	3500
Southwest District	50	50	150	7500	50	50	128	6400
Chaves	10	10	150	1500	10	10	150	1500
Dona Ana	10	10	150	1500	10	10	150	1500
Eddy	10	10	150	1500	10	10	150	1500
Lea	110	60	160	9700	75	50	160	8000
Otero	70	70	540	37800	115	100	268	26800
Southeast District	210	160	325	52000	220	180	207	39300
State	600	550	170	94000	550	500	135	68000

CARROTS-EARLY FALL: Acreage, yield, and production, by counties, all irrigated, 1962 and 1963

County	1962				1963			
	Acres		Yield per harvested acre	Production	Acres		Yield per harvested acre	Production
	Planted	Harvested			Planted	Harvested		
	Acres	Acres	Cwt.	Cwt.	Acres	Acres	Cwt.	Cwt.
Bernalillo	15	10	140	1400	0	0	—	—
Valencia	200	170	170	28900	0	0	—	—
Northwest District	215	180	168	30300	0	0	—	—
Lea	60	50	140	7000	170	170	200	34000
Otero	25	20	135	2700	10	10	100	1000
Southeast District	85	70	139	9700	180	180	194	35000
State	300	250	160	40000	180	180	195	35000

CANTALOUPS MID-SUMMER: Acreage, yield, and production, by counties, all irrigated, 1962 and 1963

County	1962				1963			
	Acres		Yield per harvested acre	Production	Acres		Yield per harvested acre	Production
	Planted	Harvested			Planted	Harvested		
	Acres	Acres	Cwt.	Cwt.	Acres	Acres	Cwt.	Cwt.
Bernalillo	10	10	60	600	20	20	60	1200
Sandoval	10	10	50	500	10	10	60	600
San Juan	20	20	60	1200	0	0	—	—
Santa Fe	20	20	60	1200	0	0	—	—
Valencia	30	20	60	1200	60	50	60	3000
Northwest District	90	80	59	4700	90	80	60	4800
De Baca	20	20	60	1200	10	10	60	600
Quay	60	50	60	3000	60	50	50	2500
Roosevelt	30	30	60	1800	30	30	50	1500
Northeast District	110	100	60	6000	100	90	51	4600
Hidalgo	10	10	70	700	10	10	70	700
Luna	10	10	70	700	10	10	70	700
Southwest District	20	20	70	1400	20	20	70	1400
Chaves	50	40	70	2800	40	40	60	2400
Dona Ana	60	50	130	6500	20	20	90	1800
Lea	660	600	60	36000	80	50	60	3000
Otero	10	10	60	600	0	0	—	—
Southeast District	780	700	66	45900	140	110	65	7200
State	1000	900	65	58000	350	300	60	18000

* Includes 24,000 cwt. not marketed.

New Mexico Agricultural Statistics

ONIONS-EARLY SUMMER: Acreage, yield, and production, by counties, all irrigated, 1962 and 1963

County	1962				1963			
	Acres		Yield per harvested acre	Production	Acres		Yield per harvested acre	Production
	Planted	Harvested			Planted	Harvested		
	Acres	Acres	Cwt.	Cwt.	Acres	Acres	Cwt.	Cwt.
Bernalillo	40	40	250	10000	60	60	250	15000
Sandoval	10	10	200	2000	0	0		
Valencia	30	30	230	6900	20	20	250	5000
Northwest District	80	80	236	18900	80	80	250	20000
Roosevelt	75	75	240	18000	200	200	150	30000
Northeast District	75	75	240	18000	200	200	150	30000
Hidalgo	110	110	280	30800	30	30	277	8300
Luna	120	120	300	36000	90	90	300	27000
Sierra	20	20	250	5000	20	20	250	5000
Socorro	20	20	330	6600	10	10	320	3200
Southwest District	270	270	290	78400	150	150	290	43500
Chaves	10	10	200	2000	0	0		
Dona Ana	1450	1350	300	405000	1400	1300	379	492500
Eddy	20	20	200	4000	0	0		
Lea	295	295	209	61700	270	270	200	54000
Southeast District	1775	1675	282	472700	1670	1570	348	546500
State	2200	2100	280	588000	2100	2000	320	640000

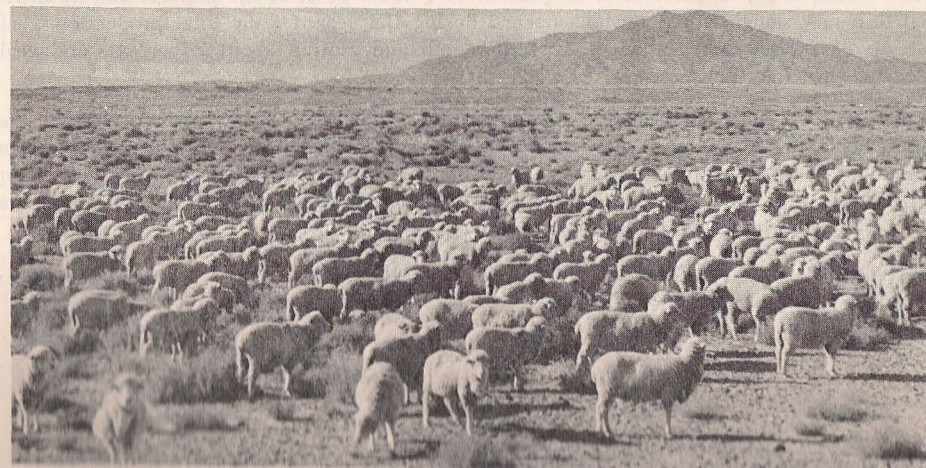
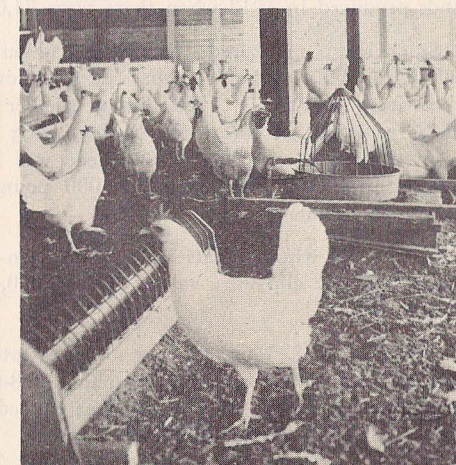
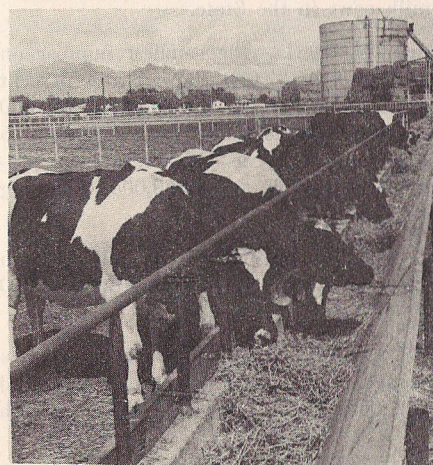
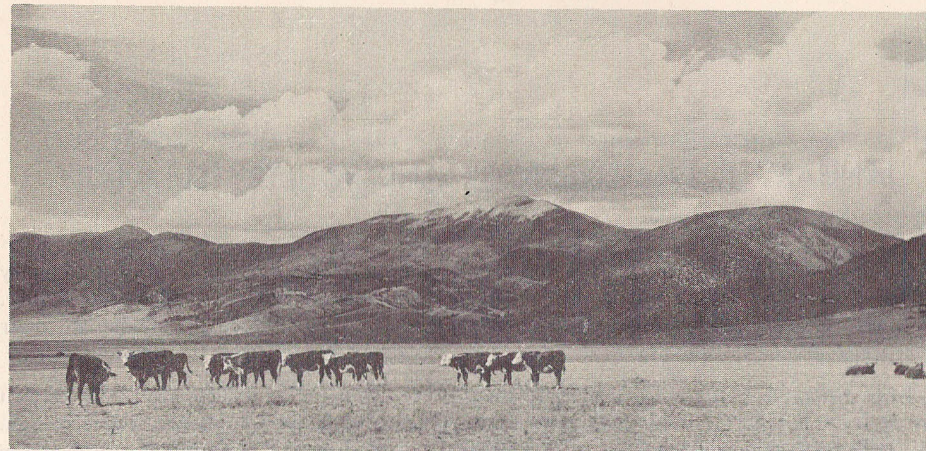
APPLES¹: Acres, orchards, and trees 1962, and production 1962 and 1963²

County	Acres, orchards, and trees — 1962						Production	
	Number of acres	Orchards		Trees		1962	1963 ³	
		Number	Percent of total	Per orchard	Per acre			
								Acres
Bernalillo	180	27	3	422	63	31700	3000	
Rio Arriba	2080	398	42	285	54	157000	40000	
Sandoval	450	74	8	250	41	53500	20000	
San Juan	1050	108	11	376	39	7400	100000	
Santa Fe	460	133	14	181	52	1300	16000	
Valencia	150	20	2	495	66	25100	4000	
Northwest District	4370	760	80	287	50	276000	183000	
De Baca	90	12	1	283	38	12900	1000	
Northeast District	90	12	1	283	38	12900	1000	
Grant	230	28	3	379	46	54700	1000	
Southwest District	230	28	3	379	46	54700	1000	
Chaves and Otero	790	40	4	878	44	116400	90000	
Lincoln	1520	110	12	574	42	110000	175000	
Southeast District	2310	150	16	655	43	226400	265000	
State	7000	950	100	347	47	570000	450000	

¹ Estimates for commercial counties only.

² Acres, orchards, and trees refer to those orchards in commercial counties with fifty or more trees being maintained for production. Production refers to total production in commercial counties.

³ Preliminary.



JANUARY 1, 1964 LIVESTOCK AND POULTRY SUMMARY

Cattle and calves on New Mexico farms and ranches totaled 1,257,000 head on January 1, 1964. This represents an increase of 4 percent from the number on hand a year earlier. Total value of cattle and calves was \$157,125,000 — a decrease of \$8,508,000 due to lower cattle prices. Average value per head at \$125.00 was down \$12.00 from the previous year.

Milk cows and heifers, two years and older, were estimated at 43,000 head, a 2 percent increase from January 1, 1963. Milk production per cow, at 6,850 pounds was a record high. Total milk production during 1963 of 274,000,000 pounds was a 7 percent increase over the 256,000,000 pounds produced in 1962. This is the highest production since the 300,000,000 pounds produced in 1943 when there were 74,000 milk cows in the State.

Stock sheep numbered 1,055,000 head on January 1, 1964 — the smallest number on hand in the 98 years of record. The inventory value of \$14,137,000 showed a 3 percent decline from January 1, 1963 due to smaller numbers. New Mexico marketed 51,210,000 pounds liveweight of sheep and lambs during 1963. Cash receipts totaled \$6,512,000 up 5 percent. The lamb crop at 718,000 head was 1 percent above a year ago. Shorn wool production during 1963 totaled 10,157,000 pounds and was valued at \$4,469,000 excluding government payments.

A total of 61,000 goats were clipped in 1963, yielding 4.6 pounds of mohair. Cash receipts from the clip were valued at \$189,000, an increase of 24 percent from the \$152,000 clip in 1962.

On January 1, 1964, all hog numbers totaled 45,000 head. This is 7000 fewer than a year earlier and 8,000 head less than the 1958-62 average. Average price per head at \$21.20 was \$3.80 below 1963. Hog marketings totaled 14,121,000 pounds liveweight bringing cash receipts of \$2,153,000 to the State's farmers.

Commercial production of red meat in New Mexico slaughter plants totaled 103,411,000 pounds during 1963, an increase of 57 percent over 1962. Most of the increase can be attributed to a new slaughter plant which opened during the year. Of the total production, beef made up 85 percent, pork about 13 percent, lamb and mutton about 2 percent, and veal less than one half of one percent.

Chickens on farms numbered 945,000 birds on January 1, 1964, unchanged from the same date a year earlier. Inventory value of chickens at \$898,000 was down 9 percent from the January 1, 1963 value. Chickens raised during 1963 totaled 672,000, 8 percent less than the previous year. Egg production totaled 160 million eggs, 2 percent above 1962, and the highest of record for the third consecutive year.

The value of all livestock and poultry on New Mexico farms and ranches January 1, 1964 was estimated at \$173,568,000. This is a decrease of 5 percent from a year earlier.

LIVESTOCK AND POULTRY: Number on farms and ranches January 1, average 1958-62, 1963 and 1964

Class	Number			Class	Number		
	Average 1958-62	1963	1964 ¹		Average 1958-62	1963	1964 ¹
	Thou. head				Thou. head		
ALL CATTLE	1,156	1,209	1,257	ALL SHEEP & LAMBS	1,186	1,145	1,089
KEPT FOR MILK	68	66	68	On feed	55	55	34
Cows 2 years & over	46	42	43	STOCK SHEEP	1,131	1,090	1,055
Heifers 1-2 years	10	11	12	LAMBS	197	174	192
Heifer calves	12	13	13	Ewes	175	156	169
OTHER CATTLE	1,090	1,143	1,189	Wethers & rams	22	18	23
Cows 2 years & over	622	676	696	1 YEAR & OLDER	934	916	863
Heifers 1-2 years	105	112	116	Ewes	882	867	816
Calves	287	269	292	Rams	46	43	41
Steers 1 year & over	52	60	58	Wethers	6	6	6
Bulls 1 year & over	24	26	27	HOGS AND PIGS	53	52	45
CHICKENS	868	945	945	ALL TURKEYS	8	4	3
Hens	404	435	426	Breeder hens	6	3	2
Pullets	439	490	500				
Other	25	20	19				

¹ Preliminary.

Number, value per head, and total value of livestock and poultry on January 1, average 1958-62, 1963 and 1964

Class	Number			Value per head			Total value		
	Average 1958-62	1963	1964 ¹	Average 1958-62	1963	1964 ¹	Average 1958-62	1963	1964 ¹
	Thou. head			Dollars			Thou. dollars		
All cattle	1,156	1,209	1,257	131.00	137.00	125.00	152,228	165,633	157,125
Cows for milk	46	42	43	188.00	190.00	185.00	8,566	7,980	7,955
Stock sheep	1,131	1,090	1,055	17.00	13.40	13.40	19,172	14,606	14,137
Hogs & pigs	53	52	45	22.20	25.00	21.20	1,181	1,300	954
Chickens	868	945	945	1.17	1.05	0.95	1,014	992	898
Turkeys	8	4	3	4.54	4.20	4.00	38	17	12

¹ Preliminary.

LIVESTOCK: Inventory numbers, births, and disposition, 1961, 1962, and 1963

CATTLE AND CALVES

Year	On hand January 1		Calves born			Marketings ²		Farm slaughter		Deaths	
	All cattle and calves	All cows 2 yrs. and older	Number	As percentage of cows 2 yrs. and older ¹	Inshipments	Cattle	Calves	Cattle	Calves	Cattle	Calves
	Thou. head	Thou. head	Thou. head	Percent	Thou. head	Thou. head	Thou. head	Thou. head	Thou. head	Thou. head	Thou. head
1961.....	1,174	676	568	84	340	575	217	4	6	19	40
1962.....	1,221	712	598	84	365	637	271	4	5	18	40
1963.....	1,209	718	610	85	408	641	259	5	5	19	41

SHEEP AND LAMBS

Year	On hand January 1	Lambs Saved		Inshipments		Marketings ²		Farm slaughter		Deaths	
		Number	As percent of ewes 1 year and older	Sheep	Lambs	Sheep	Lambs	Sheep	Lambs	Sheep	Lambs
		Thou. head	Thou. head	Thou. head	Thou. head	Thou. head	Thou. head	Thou. head	Thou. head	Thou. head	Thou. head
1961.....	1,192	766	84	37	19	101	480	29	17	110	86
1962.....	1,191	710	80	45	12	124	440	29	17	115	88
1963.....	1,145	718	83	44	17	140	459	29	17	101	89

HOGS AND PIGS

Year	On hand January 1	December-May		June-November		Disposition			
		Sows farrowing	Pig crop	Sows farrowing	Pig crop	Inshipments	Marketings ²	Farm slaughter	Deaths
		Thou. head	Thou. head	Thou. head	Thou. head	Thou. head	Thou. head	Thou. head	Thou. head
1961.....	54	5	34	6	39	2	55	15	7
1962.....	52	5	35	6	37	—	52	14	6
1963.....	52	5	33	5	35	5	62	12	6

¹ Not strictly a calving rate. Figure represents calves born expressed as a percentage of January 1 inventory of cows and heifers 2 years old and over and not the number of all cows and heifers giving birth to calves during the year.
² Excludes inter-farm sales.

LIVESTOCK: Production and income, 1961, 1962, and 1963

CATTLE AND CALVES

Year	Production ¹	Marketings ²	Price per 100 pounds		Value of production	Cash receipts ³	Value of home consumption	Gross income	Cost of inshipments
			Cattle	Calves					
	Thou. pounds	Thou. pounds	Dollars		Thou. dollars	Thou. dollars	Thou. dollars	Thou. dollars	Thou. dollars
1961.....	394,685	547,495	21.40	25.80	88,393	121,279	1,182	122,461	43,206
1962.....	414,300	622,565	21.30	26.70	94,287	138,531	1,131	139,662	48,897
1963.....	428,950	633,100	20.60	24.90	93,023	134,779	1,243	136,022	52,236

SHEEP AND LAMBS

Year	Production ¹	Marketings ²	Price per 100 pounds		Value of production	Cash receipts ³	Value of home consumption	Gross income	Cost of inshipments
			Sheep	Lambs					
	Thou. pounds	Thou. pounds	Dollars		Thou. dollars	Thou. dollars	Thou. dollars	Thou. dollars	Thou. dollars
1961.....	52,166	48,314	4.90	14.70	6,449	6,026	302	6,328	352
1962.....	41,694	47,622	5.30	16.00	5,749	6,180	330	6,510	393
1963.....	43,102	51,210	5.70	15.70	6,017	6,512	329	6,841	464

HOGS

Year	Production ¹	Marketings ²	Price per 100 pounds	Value of production	Cash receipts ³	Value of home consumption	Gross income	Cost of inshipments
1961.....	16,182	12,797	16.40	2,654	2,138	556	2,694	26
1962.....	15,291	11,856	16.30	2,492	1,964	514	2,478	—
1963.....	15,497	14,121	15.10	2,340	2,153	424	2,577	66

¹ Adjustments made for inshipments and changes in inventory.
² Excludes inter-farm sales.
³ Includes receipts from marketings and from sales of farm slaughtered meat.

MILK: Production, disposition, price, and income, 1961, 1962, and 1963

Year	Milk cows on farms ¹	Milk production per cow ²	Total milk production ²	Used on farms where produced	Disposition of milk produced							Gross farm income from dairy products
					Sold wholesale			Milk and cream retailed by farmers		Value of sales (receipts from farm marketings)	Thou. dollars	
					Whole milk	Price per 100 pounds	Milkfat sold	Price per pound	Milk equivalent			
Thou. head	Pounds	Million pounds	Million pounds	Million pounds	Dollars	Million pounds	Cents	Million quarts	Cents	Thou. dollars	Thou. dollars	
1961	40	6,170	247	28	207	5.09	.1	58	4	22.3	11,532	12,744
1962	39	6,560	256	24	220	5.03	.1	56	5	22.0	12,211	13,263
1963 ³	40	6,850	274	21	245	5.05	—	—	4	22.0	13,252	14,143

¹ Average number on farms during year, excluding heifers not yet fresh.

² Excludes milk sucked by calves.

³ Preliminary.

CATTLE AND CALVES ON FEED: Marketings and placements, by quarters

Year and quarter		Total fed cattle marketed	Cattle and calves placed on feed	Year and quarter		Total fed cattle marketed	Cattle and calves placed on feed
		Thou. head	Thou. head			Thou. head	Thou. head
1961	October 1—December 31	23	40	1963	January 1—March 31	33	35
1962	January 1—March 31	29	31		April 1—June 30	46	28
	April 1—June 30	34	22		July 1—September 30	43	37
	July 1—September 30	39	40		October 1—December 31	23	53
	October 1—December 31	27	58	1964	January 1—March 31	34	33

CATTLE AND CALVES ON FEED: Number on feed, weight groups, classes, and length of time on feed, by quarters 1960-1964

Year and month	Total cattle and calves on feed	Number on feed by weight groups					Number on feed by classes			Number on feed by time		
		Under 500 pounds	500-699 pounds	700-899 pounds	900-1099 pounds	1100 pounds and over	Steers and steer calves	Heifers and heifer calves	Cows and others	Less than 3 months	3 to 6 months	6 months and over
Thousand head												
Oct. 1												
1960	42	7	17	14	3	1	17	24	1	20	16	6
1961	47	8	18	16	4	1	19	27	1	30	15	2
1962	55	19	20	11	4	1	21	33	1	40	12	3
1963	64	17	22	15	8	2	28	35	1	36	22	6
Jan. 1												
1961	53	12	19	16	5	1	23	27	3	35	14	4
1962	64	12	20	24	6	2	29	32	3	39	21	4
1963	86	14	27	36	8	1	47	36	3	57	27	2
1964	94	18	28	29	16	3	49	43	2	52	32	10
Apr. 1												
1961	49	9	17	14	8	1	22	26	1	22	23	4
1962	66	11	24	19	11	1	32	32	2	30	33	3
1963	88	9	28	29	19	3	46	39	3	34	45	9
1964 ¹	93	11	35	24	18	5	50	41	2	32	49	12
July 1												
1961	38	3	12	15	4	4	16	21	1	16	17	5
1962	54	7	17	19	9	2	27	25	2	21	27	6
1963	70	8	17	28	15	2	44	25	1	27	27	16

¹ Preliminary.

LIVESTOCK SLAUGHTER: Number slaughtered, average and total liveweight, by species, 1961, 1962, and 1963¹

Year	Cattle			Calves			Hogs			Sheep and lambs		
	Number	Average live-weight per head	Total live-weight	Number	Average live-weight per head	Total live-weight	Number	Average live-weight per head	Total live-weight	Number	Average live-weight per head	Total live-weight
	Thou. head	Pounds	Thou. pounds	Thou. head	Pounds	Thou. pounds	Thou. head	Pounds	Thou. pounds	Thou. head	Pounds	Thou. pounds
1961	77.0	904	69,638	1.6	445	712	87.8	233	20,481	52.6	108	5,658
1962	94.6	929	87,845	1.6	452	724	101.3	228	23,101	42.7	102	4,349
1963	160.7	938	154,013	1.2	444	533	104.0	227	23,595	37.4	101	3,787

¹ Includes slaughter under Federal inspection and other commercial slaughter; excludes farm slaughter.

FARM CHICKENS: Number raised, produced, disposition, and income, 1961, 1962, and 1963¹

Year	Raised ²		Lost ³		Produced ⁴		Con- sumed in farm house- hold		Sold		Pounds produced ⁴		Pounds summed in farm house- hold		Pounds sold		Price per pound		Value of produc- tion		Cash receipts		Value of chickens con- sumed		Gross income	
	Thou. head	Thou. head	Thou. head	Thou. head	Thou. head	Thou. head	Thou. head	Thou. head	Thou. head	Thou. head	Thou. pounds	Thou. pounds	Thou. pounds	Thou. pounds	Thou. pounds	Thou. pounds	Cents	Cents	Thou. dollars	Thou. dollars	Thou. dollars	Thou. dollars	Thou. dollars	Thou. dollars	Thou. dollars	Thou. dollars
1961	737	150	587	292	235	2,202	934	1,010	10.3	227	104	96	200													
1962	730	170	560	312	833	2,156	1,310	10.9	235	143	91	234														
1963 ¹	672	170	502	189	313	1,370	624	9.9	195	133	62	195														

¹ Does not include commercial broilers.
² Does not include young chickens lost.

³ Loss during the year of chickens on hand January 1.

⁴ Production is the number (or pounds) available for utilization during the year.

⁵ Preliminary.

CHICKENS AND EGGS: Chickens raised, average number of layers on hand, egg production, price, and income, 1961, 1962, and 1963

Year	Chickens raised		Average yearly number layers on hand		Eggs produced		Eggs consumed in farm household		Eggs sold		Price per dozen		Cash receipts		Value of eggs consumed in farm household		Gross income	
	Thou. head	Thou. head	Thou. head	Thou. head	Thou. head	Thou. head	Thou. head	Thou. head	Thou. head	Thou. head	Cents	Cents	Thou. dollars	Thou. dollars	Thou. dollars	Thou. dollars	Thou. dollars	Thou. dollars
1961	737	751	151	12	139	38.7	4,483	4,870										
1962	730	771	157	10	147	35.6	4,361	4,658										
1963 ¹	672	754	160	9	151	34.5	4,341	4,600										

¹ Preliminary.

WHITE-OWNED SHEEP: (Excludes sheep owned by Indians): Number on farms, sheep shorn, and wool production, 1961, 1962, and 1963

Year	Total sheep		Stock sheep				Average weight of fleece	Wool produc- tion
	Thou. head	Thou. head	Total	All ewes ¹	All other sheep	Sheep shorn		
1961	953	45	908	851	57	915	9.6	8,743
1962	942	52	890	835	55	893	9.9	8,817
1963 ²	901	55	846	796	50	846	10.0	8,432

WOOL: Number sheep shorn, fleece weight, production, price, and value, 1961, 1962, and 1963

Year	Sheep shorn ³		Average weight of fleece		Produc- tion		Price per pound ⁴		Total value
	Thou. head	Pounds	Thou. pounds	Thou. pounds	Cents	Thou. dollars			
1961	1,137	9.1	10,364	42	4,353				
1962	1,122	9.4	10,557	47	4,962				
1963 ²	1,073	9.5	10,157	44	4,469				

MOHAIR: Number of goats clipped, fleece weight, production, price, and value, 1961, 1962, and 1963

Year	Goats clipped		Average weight of fleece		Produc- tion		Price per pound ⁴		Total value
	Thou. head	Pounds	Thou. pounds	Thou. pounds	Cents	Thou. dollars			
1961	53	4.8	255	76	194				
1962	59	4.7	277	55	152				
1963 ²	61	4.6	282	67	189				

BEEES AND HONEY: Colonies, yield, production, price, and value, 1961, 1962, and 1963

Year	Honey					Beeswax			
	Colonies of bees	Pounds per colony	Produc- tion	Price per pound	Value of produc- tion	Honey stocks on hand Dec. 15	Produc- tion	Price per pound	Value of produc- tion
1961	10	70	700	14.3	100	126	14	42	6
1962	10	72	720	14.2	102	245	14	42	6
1963 ²	11	70	770	15.3	118	118	12	43	5

¹ Ewes one year and over and cwe lambs.

² Preliminary.

³ Includes shearing at commercial feeding yards.

⁴ Price per pound on a marketing year basis, April-March, 1960-61, April-December, 1963.

LIVESTOCK INVENTORY: Number on farms, by counties, January 1, 1963

County	All cattle	All cows 2 years and older	Milk cows	All heifers 1-2 yrs.	Hogs	Sheep	Chickens
	Head	Head	Head	Head	Head	Head	Head
Bernalillo	14000	8000	4900	1700	1600	5500	220000
McKinley	11000	7000	100	1500	500	108000	5000
Rio Arriba	29000	18000	600	3000	1600	56000	12000
Sandoval	20000	12000	200	1100	700	7000	3000
San Juan	19000	11000	1400	1900	1400	83000	8000
Santa Fe	19000	11000	400	2000	1200	4000	39000
Taos	11000	7000	400	1300	2300	24000	8000
Valencia	46000	24000	4000	4500	2800	43500	46000
Northwest District	169000	98000	12000	17000	12100	331000	341000
Colfax	61000	38000	800	7000	2400	7500	4000
Curry	52000	15000	1300	6000	4100	4500	35000
De Baca	36000	23000	500	4000	900	25000	8000
Guadalupe	36000	23000	200	3800	600	55000	2000
Harding	40000	29000	200	4100	600	2000	2000
Mora	30000	20000	400	3900	600	19000	5000
Quay	59000	40000	1700	6500	3200	2000	15000
Roosevelt	68000	38000	9800	7100	7100	2500	18000
San Miguel	56000	36000	900	5300	800	11000	16000
Torrance	36000	23000	1400	3300	1600	33500	4000
Union	90000	53000	900	7000	1300	3000	7000
Northeast District	564000	338000	18100	58000	23200	165000	116000
Catron	40000	23000	200	3600	400	15000	2000
Grant	42000	27000	500	3100	700	1500	9000
Hidalgo	39000	21000	200	3800	1500	500	3000
Luna	26000	16000	200	2800	2600	500	29000
Sierra	23000	17000	1800	1800	800	13000	4000
Socorro	39000	25000	400	3900	300	5500	2000
Southwest District	209000	129000	3300	19000	6300	36000	49000
Chaves	68000	38000	1000	6300	2900	193000	53000
Dona Ana	23000	10000	2700	3500	1600	3000	270000
Eddy	48000	27000	2300	4800	1700	100000	52000
Lea	62000	37000	1500	6000	3200	56000	30000
Lincoln	31000	19000	300	3500	300	228000	10000
Otero	35000	22000	800	4900	700	33000	24000
Southeast District	267000	153000	8600	29000	10400	613000	439000
State	1209000	718000	42000	123000	52000	1145000	945000

LIVESTOCK INVENTORY: Number on farms, by counties, January 1, 1964¹

County	All cattle	All cows 2 years and older	Milk cows	All heifers 1-2 yrs.	Hogs	Sheep	Chickens
	Head	Head	Head	Head	Head	Head	Head
Bernalillo	14000	8000	5000	1900	1300	8500	163000
McKinley	11000	7000	100	1800	900	108000	6000
Rio Arriba	28000	17000	600	3000	1100	56000	10000
Sandoval	23000	13000	200	1200	400	5000	5000
San Juan	19000	11000	1300	1900	1400	84000	16000
Santa Fe	19000	11000	400	2200	900	4000	12000
Taos	12000	8000	500	1000	1900	23000	11000
Valencia	52000	26000	4200	5000	2800	40500	57000
Northeast District	178000	101000	12300	18000	10700	329000	280000
Colfax	61000	38000	800	5900	2000	6500	6000
Curry	54000	16000	1300	6000	3400	5000	36000
De Baca	37000	23000	500	4000	1000	25000	9000
Guadalupe	36000	25000	200	4500	500	48000	3000
Harding	39000	28000	200	3900	100	2000	2000
Mora	28000	19000	400	2000	500	15000	7000
Quay	61000	40000	1800	4900	2000	2000	21000
Roosevelt	71000	40000	10000	7100	7000	2500	44000
San Miguel	57000	34000	800	5500	500	10000	25000
Torrance	38000	24000	1400	3000	1500	32000	6000
Union	84000	49000	900	7200	1300	3000	12000
Northeast District	566000	336000	18300	54000	19800	151000	171000
Catron	42000	25000	100	3000	200	14500	2000
Grant	44000	29000	500	3700	500	2000	10000
Hidalgo	41000	22000	200	3600	1900	500	3000
Luna	28000	18000	200	3500	2000	500	31000
Sierra	25000	18000	2000	1700	600	12000	7000
Socorro	44000	27000	400	4500	200	7500	3000
Southwest District	224000	139000	3400	20000	5400	37000	56000
Chaves	76000	42000	1000	9500	2300	180000	47000
Dona Ana	23000	10000	2800	4600	1300	1500	265000
Eddy	54000	29000	2500	4800	1400	94000	72000
Lea	67000	40000	1500	8500	3000	56000	37000
Lincoln	33000	20000	400	3600	200	210000	12000
Otero	36000	22000	800	5000	900	30500	5000
Southeast District	289000	163000	9000	36000	9100	572000	438000
State	1257000	739000	43000	128000	45000	1089000	945000

¹ Preliminary.

CATTLE ON FEED: Number on feed, by counties, and quarters, January 1, 1962-April 1, 1964

County	Jan. 1, 1962	Apr. 1, 1962	July 1, 1962	Oct. 1, 1962	Jan. 1, 1963	Apr. 1, 1963	July 1, 1963	Oct. 1, 1963	Jan. 1, 1964	Apr. 1, 1964 ¹
	Head									
Bernalillo	7200	7000	6900	8300	9000	7250	7400	8850	9300	8500
Other counties ²	2500	2500	2400	1800	2100	1900	1950	1050	2400	2100
Northwest District	9700	9500	9300	10100	11100	9150	9350	9900	11700	10600
Curry	16300	14900	9100	11550	22500	21650	16300	20000	26000	25200
Roosevelt	1500	1600	1250	1900	1700	1650	850	600	2200	1900
Other counties ³	1900	2000	1650	1700	3800	3400	2350	1100	1700	2800
Northeast District	19700	18500	12000	15150	28000	26700	19500	21700	29900	29900
Southwest District ⁴	1500	2200	1900	1100	2700	1800	1450	1100	2200	3000
Chaves	26000	28500	23900	24250	37200	41400	34000	25000	40000	40500
Dona Ana	2900	4000	3800	2400	3800	5350	3500	3100	5000	5000
Eddy	1600	700	400	150	650	500	250	950	2200	1050
Lea	2500	2500	2600	1800	2500	2600	1600	2250	2950	2900
Other counties ⁵	100	100	100	50	50	500	350	0	50	50
Southeast District	33100	35800	30800	28650	44200	50350	39700	31300	50200	49500
State	64000	66000	54000	55000	86000	88000	70000	64000	94000	93000

- ¹ Preliminary.
- ² Includes Sandoval, Santa Fe, and Valencia.
- ³ Includes Colfax, De Baca, Quay, Torrance, and Union.
- ⁴ Includes Hidalgo, Luna, and Socorro.
- ⁵ Includes Lincoln, and Otero.

SHEEP ON FEED: Number on feed, by counties, January 1, 1961, 1962, 1963, 1964

County	Sheep on feed Jan. 1			
	1961	1962	1963	1964 ¹
	Head			
Bernalillo	1300	3300	1900	4600
Other counties	100	100	100	600
Northwest District	1400	3400	2000	5200
Curry	3300	4600	4000	2000
Other counties	100	100	1800	500
Northeast District	3400	4700	5800	2500
Southwest District	100	100	100	200
Chaves	27800	30000	27500	13300
Eddy	1800	2200	8300	4900
Lea	0	600	900	500
Lincoln	10400	10900	8000	7200
Other counties	100	100	2400	200
Southeast District	49100	43800	47100	26100
State	45000	52000	55000	34000

¹ Preliminary.

CROP VALUES: Farm value of production of principal crops, by counties, 1963¹

County and District	Wheat	Sorghum for grain	Corn for grain	Oats	Barley	Cotton and Cottonseed	All Hay	Alfalfa-seed	Broom-corn	Pota-toes
	Dollars									
Bernalillo	9600	2150	22000	2750	12000		572000			
McKinley	1900		29000	850	1200		68000			
Rio Arriba	48000	850	3400	7500	20500		555000			
Sandoval	7000		18400	2300	800		154000			
San Juan	26500		205000	8500	21500		991000			
Santa Fe	34000		12300	4400	24000		294000			115000
Taos	13000		15000	7100	27500		515000			160000
Valencia	35000	27000	9900	6600	20500		1185000			92000
Northwest District	175000	30000	315000	40000	128000		4334000			413000
Colfax	89000	5900	15500	37600	4500		915000			
Curry	4395000	6371000	22500	8800	86500	178400	133000		38000	
De Baca	2400	59000	3400		3300	3400	417000			
Guadalupe		1100	3400	1050			78000			
Harding	60000	31600	1200	850			28000			
Mora	6600	700	5500	7500	3400		495000		38500	
Quay	1505000	1141000	6000	7500	3800	529000	740000	4000	1275000	
Roosevelt	867000	2136000	26500	4200	45500	2750200	490000		1495000	
San Miguel	9000	5800	17500	3000			232000			
Torrance	42000	4900	96000		13700		661000			509000
Union	40000	516000	3500	2000	7300		277000		118500	
Northeast District	7016000	10273000	201000	72500	168000	3461000	4466000	4000	2965000	577000
Catron	2000	500	2700		7400		57000			
Grant	4800	22000	13500	6500	18000		247000			
Hidalgo		400000	8300	2800	127000	24000	195000			
Luna		1000000	25000	6200	114000	4852500	231000			
Sierra		6000	10500		52100	873000	212000			
Socorro	1200	36500	25000		17500	573000	487000			
Southwest District	8000	1465000	85000	15500	336000	8427000	1429000	5600		
Chaves	10600	363000	38500	28800	495000	9704500	6874000	219900		
Dona Ana	1800	40000	13500	2200	233000	20102000	1536000	114500		
Eddy	1200	87000	3500	49000	208000	7218000	4377000	162200		
Lea	4200	1900000	15000	23400	152000	3013000	912000	3800	73000	
Lincoln		3000	1700		1300		185000			
Otero	3200	14000	5800	12600	10700	467500	135000			
Southeast District	21000	2407000	78000	116000	1100000	40505000	14019000	500400	73000	
State	7220000	14175000	679000	244000	1732000	52393000	24248000	510000	3038000	990000

¹ For some crops, county values will not add to district totals. District totals include counties for which separate estimates were not made.

CROP VALUES: Farm value of production of principal crops, by counties, 1963¹

County and District	Sweet-potatoes	Peanuts	Dry beans	Early spring and Early fall lettuce	Fresh market and Processing tomatoes	Carrots	Cantaloups	Onions	Apples	Total
Bernalillo			8400	8000	3300		2800	60000	7500	710500
McKinley			98000							198950
Rio Arriba			2300		10000				88000	728550
Sandoval			2200		7700		1300		50000	246000
San Juan			30000						2110000	1501200
Santa Fe			10000						36000	529700
Taos			3100							740700
Valencia			10000	113500	27000		6800	22500	10000	1568800
Northwest District			164000	121500	48000		10900	82500	402500	6264400
Colfax			5500		3600					1073000
Curry										11236800
De Baca			7000				1200		2000	494700
Guadalupe										140650
Harding										140150
Mora			5400		17500		5800			5251300
Quay		16000	700		6000		3500			10625900
Roosevelt		2305000	3400					105000		10625900
San Miguel			113000	28500						270700
Torrance										1468100
Union				28500						964300
Northwest District			135000	28500	27100		10500	105000	2000	32224600
Catron										69600
Grant			47000							339300
Hidalgo			182500		306900		1500	33500	3500	2918100
Luna					11000		1500	108000		6827600
Sierra			10500					23000		1189100
Socorro			240000		317900		3000	128000		1278700
Southwest District								292500	3500	12628000
Chaves					4500		5800			17744600
Dona Ana				1058000	4500		4000	2253000		25362500
Eddy					4500					12110400
Lea					24000		6800	243000		6490100
Lincoln		47000								441000
Otero		47000	15000	1058000	117500				250000	768400
Southeast District					155000		16600	2496000	452000	6316800
State			426000	1208000	548000	75000	41000	2976000	860000	114285000

¹ For some crops, county values will not add to district totals. District totals include counties for which separate estimates were not made.

New Mexico Agricultural Statistics

LIVESTOCK INVENTORY VALUES: Farm inventory value of specified species of livestock, by counties, January 1, 1964

County and District	All cattle ¹	Milk cows ²	Hogs	All sheep	Chickens	Total
	Dollars					
Bernalillo	1750000	925000	26500	112000	156000	2044500
McKinley	1375000	18000	18000	1447000	5700	2845700
Rio Arriba	3500000	105000	22500	750500	9500	4282500
Sandoval	2875000	35000	8000	67000	4800	2954800
San Juan	2375000	225000	28500	1125000	15000	3543500
Santa Fe	2375000	76000	18500	53500	11500	2458500
Taos	1500000	90000	39000	308000	10500	1857500
Valencia	6500000	777000	58000	543000	54000	7155000
Northwest District	22250000	2251000	219000	4406000	267000	27142000
Colfax	7625000	149000	42000	87000	5600	7759600
Curry	6750000	233000	71500	66000	34000	6921500
De Baca	4625000	90000	21000	335000	8500	4989500
Guadalupe	4500000	35000	3000	643000	2800	5156300
Harding	4875000	36000	2000	27000	1900	4905900
Mora	3500000	72000	10500	201000	6600	3718100
Quay	7625000	351000	42000	27000	19500	7713500
Roosevelt	8875000	1880000	147000	33500	41000	9096500
San Miguel	7125000	144000	10500	134000	23500	7293000
Torrance	4750000	273000	31500	429000	5600	5216100
Union	10500000	176000	27500	40500	11000	10579000
Northwest District	70750000	3439000	416000	2023000	160000	73349000
Catron	5250000	18000	4500	194500	2400	5451400
Grant	5500000	90000	11000	27000	11000	5549000
Hidalgo	5125000	38000	42000	6500	3000	5176500
Luna	3500000	36000	44000	6500	29500	3580000
Sierra	3125000	392000	13000	161000	7800	3306800
Socorro	5500000	73000	4500	100500	3300	5608300
Southwest District	28000000	647000	119000	496000	57000	28672000
Chaves	9500000	180000	50500	2406000	45000	12001500
Dona Ana	2875000	504000	28500	20000	249000	3172500
Eddy	6750000	460000	31000	1258000	65000	8107000
Lea	8375000	262000	66000	750000	35000	9226000
Lincoln	4125000	72000	4500	2811000	12000	6952500
Otero	4500000	140000	19500	409000	5000	4933500
Southeast District	36125000	1618000	200000	7654000	414000	44393000
State	157125000	7955000	954000	14579000	898000	173556000

¹ Including milk cows.

² Cows and heifers two years old and over kept for milk.

CROP AND LIVESTOCK REPORTS

To meet the needs of persons requiring information, approximately 180 separate reports are issued each year. These reports may be weekly, monthly, quarterly, semi-annual or annual, and may be obtained without charge by writing to Agricultural Statistician, Drawer 580, Las Cruces, New Mexico.

Following is a list of the more important releases.

1. General Crop Report	Monthly
2. Cotton	Seasonally, monthly
3. Intentions to Plant	March
4. Seed Crops	Seasonally
5. Vegetables	Seasonally, monthly
6. Annual Crop Summary	December
7. Grain Stocks	Quarterly
8. Livestock and Poultry Annual Inventory	February
9. Range and Livestock Condition	Monthly
10. Livestock Slaughter	Monthly
11. Cattle on Feed	Quarterly ¹
12. Sheep on Feed	January
13. Calf Crop	Semi-annually
14. Lamb Crop and Wool and Mohair Production	Semi-annually
15. Pig Crop	Semi-annually
16. Chickens Raised	Annually
17. Turkeys Raised	Semi-annually
18. Dairy Cows and Milk Production	Semi-annually
19. Cattle Shipments	Monthly
20. Sheep Shipments	Monthly
21. Bees — Colonies and Honey Production	Tri-annually
22. Prices Received by Farmers	Monthly
23. Number of Farms and Farm Income	Semi-annually
24. Weather, Crop and Livestock Condition	Weekly
25. New Mexico Agricultural Statistics (This Publication)	Annually

¹ Monthly for major feeding states.

NEW MEXICO CROP REPORTING DISTRICTS

