

New Mexico

2009 Agricultural Statistics



TABLE OF CONTENTS

INTRODUCTION/ACKNOWLEDGMENT

USDA/NASS New Mexico Field Office
National Association of State Departments of Agriculture

GENERAL

Release Dates for Statistical Publications.....	3
Number of Farms and Land in Farms.....	4
Usual Planting and Harvesting Dates	5
Climate	6
Fertilizer Shipped Into New Mexico	7
Commercial Feed Sold in New Mexico.....	8

PRICES AND INCOME

Farm Sector Economic Analysis	9
Income From Farming.....	10
Cash Receipts All Commodities.....	11
Cash Receipts by Commodity and by County.....	13
Government Payments.....	19
Prices Received for Hay	21
Prices Received for Cattle	22
Grazing Fees	23
Cash Rents and Land Values	24

LIVESTOCK

Livestock Summary.....	25
Cattle and Calves.....	26
Number and Value.....	26
Number by Class	27
Commercial Slaughter	27
Inventory, Supply, and Disposition	28
Production, Price, and Income.....	28
Number by County	29
Number on Feed by County.....	30
Range and Pasture Feed Condition.....	30
Milk Production	
Milk Production and Income	31
Prices Received for Milk.....	31
Milk Production by County	32
Monthly Milk Production	32
Sheep and Lambs	
Number and Value.....	33
Commercial Slaughter.....	33
Number by Class	34
Wool Production and Value.....	34
Prices Received for Wool.....	34
Inventory, Supply, and Disposition	35
Production, Price, and Income.....	35
Number by County	36
Hogs and Pigs	
Inventory, Supply, and Disposition	37
Production, Price, and Income.....	37
Goats	
Inventory	38
Mohair Production, Price, and Value.....	38

FIELD CROPS

Crop Summary	39
Acreage and Value of Principal Field Crops.....	40
Wheat	41
Wheat by County.....	42
All Hay.....	43
All Hay by County	43
Alfalfa and Other Hay.....	44
Alfalfa Hay by County	44
Sorghum.....	45
Sorghum by County	46
Corn	47
Corn Silage by County	47
Corn by County	48
Cotton.....	49
Upland Cotton by County	49
American-Pima Cotton	49
Cottonseed.....	50
Potatoes.....	51
Dry Beans.....	51
Peanuts	52
Peanuts by County.....	52

VEGETABLES AND NUTS

Chile	
Acreage and Production by County.....	53
Acreage, Yield, and Production by County.....	54
Onions	
Monthly Prices Received	55
Onions by County	56
Pecans	57
Pecans by County	57

CENSUS

2008 Farm and Ranch Irrigation	58
2008 Organic Production	59

COUNTY PROFILES 60

NMDA DIRECTORY (back cover)

New Mexico Agricultural Statistics
a cooperative program between

United States Department of Agriculture
National Agricultural Statistics Service
Cynthia Clark, Ph.D.
Administrator

State of New Mexico
Department of Agriculture
I. Miley Gonzalez, Ph.D.
Director/Secretary

USDA and NMDA thank all NM agriculture producers and trust that you find
the 2009 New Mexico Agricultural Statistics valuable.

United States Department of Agriculture
National Agriculture Statistics Service (NASS)
New Mexico Field Office

2507 North Telshor Boulevard, Suite 4, Las Cruces, New Mexico 88011

Jim Brueggen, Director
Longino Bustillos, Deputy Director

Agricultural Statisticians: José Acosta Rita Alírez Steve Hoel
Data Processing/Support: Dolores Acosta Ana Chavez Kelsi Cureton
Lisa Gillis Lyndsey Tiley Hannah Willemsma

NASS conducts all survey data collection for the cooperative program. The federal program
information is reviewed and published by the Agricultural Statistics Board, NASS, USDA.

Call us at (575) 522-6023 or (800) 530-8810 or email us at nass-nm@nass.usda.gov
Reports, Releases, and more at: www.nass.usda.gov/nm

A very special '**Thank You**' to our
National Association of State Departments of Agriculture (NASDA)
telephone and field enumerators who diligently collect '*timely, accurate, and useful statistics*' through
personal interviews and telephone calls throughout the state.

NASDA Supervisory Enumerators

Randall Ahlstrom, Silver City, NM
Patsy Herrera, Las Cruces, NM
Wesley Shafer, Grady, NM
David Williams, Las Cruces, NM

Clarence Begaye, Ft. Defiance, AZ
David Kyea, Clayton, NM
Garda Stock, Waterflow, NM

NASS and NASDA maintain a cooperative agreement for the services of this part-time
workforce to collect the data for your agricultural statistics program.

FRONT COVER

Photo Courtesy of
New Mexico Department of Agriculture



NEW MEXICO FIELD OFFICE Reports Issued During the Year

GENERAL REPORTS	FREQUENCY	APPROXIMATE DATE OF PUBLICATION ^{1/}
Crop Weather	Weekly	March - November (Mondays)
AgUpdate	Monthly	Variable depending on national reports
Includes: Weekly: Crop Weather	Monthly: Milk Production, Cattle on Feed, and Agricultural Prices Received	
New Mexico Agricultural Statistics	Annual	December
2007 Census of Agriculture	Every 5 Years	February 2009 www.nass.usda.gov/census
REPORT DATES FOR CROPS ^{2/}		
Crop Production	Monthly	August (mid) through Jan (mid)
Grain Stocks	Quarterly	January (mid) March - June - September (late)
Prospective Plantings	Annual	March (late)
Cotton Ginnings	Annual	May (mid)
Chile	Annual	April (early)
Pecans - Production and Disposition	Annual	July (mid)
Crop Yields	Monthly	August – January (mid-month)
Pecans – Forecast	Bi-Annual	October; December (mid)
REPORT DATES FOR LIVESTOCK, DAIRY, AND LIVESTOCK PRODUCTS ^{2/}		
Cattle	Semi-Annual	January (late); July (mid)
Sheep and Goats	Semi-Annual	January (late); July (mid)
Wool and Mohair Production	Annual	January (late)
Honey	Annual	February (late)
Meat Animal Production, Disposition, and Income	Annual	April (late)
Milk Production, Disposition, and Income	Annual	April (late)
ECONOMIC AND MISCELLANEOUS ^{2/}		
Farm Labor	Quarterly	February - May - August - November (mid-month)
Number of Farms and Land in Farms	Annual	February (late)
Farm Production Expenditures	Annual	August (early)
Agricultural Land Values/Cash Rents	Annual	August (early)
COUNTY ESTIMATES (available at www.usda.gov/nass LINK - <i>QUICK STATS</i>)		
Wheat		Feb (mid)
Corn		Feb (late)
Sorghum		Feb (late)
Cattle and Calves		May (late)
Milk Production		May (late)
Sheep and Lambs		May (late)
Peanuts		May (mid)
Alfalfa		June (late)
Chile		June (early)
Cotton		June (mid)
Onions		June (mid)

^{1/} Reports are available on the USDA website www.usda.gov/nass on the approximate date of publication.

^{2/} Summaries of these reports are also printed in the AgUpdate.

Farm Numbers and Land in Farms^{1/}

Year	Number of Farms in Operation ^{2/}	Land in Farms (1,000 Acres)	Number of Cattle Operations ^{3/}	Number of Milk Cow Operations ^{3/4/}	Number of Sheep Operations ^{3/}	Number of Hog Operations ^{3/}
1980	13,500	46,800	8,500	1,800	1,500	2,100
1985	14,000	45,000	9,000	1,400	1,500	1,200
1990	13,500	44,500	9,000	1,200	1,200	900
1995	15,000	45,000	9,000	900	1,000	500
2000	18,000	44,900	8,400	500	900	400
2005	17,500	43,400	7,600	450	800	350
2006	17,500	43,100	7,400	350	800	350
2007	21,000	43,200	9,500	270	2,900	400
2008	20,600	43,000	---	---	---	---
2009	20,500	43,000	---	---	---	---

^{1/} Includes farms and ranches, excludes BLM and Forest Service land leased to farmers and ranchers on a per head basis.

^{2/} Beginning in 1999 an estimate of Native American farms on reservations/pueblos was included. The 2007 census included Native American operators for the first time in history.

^{3/} Includes farms and ranches having one or more head of species on hand at any time during the year. Discontinued in 2008.

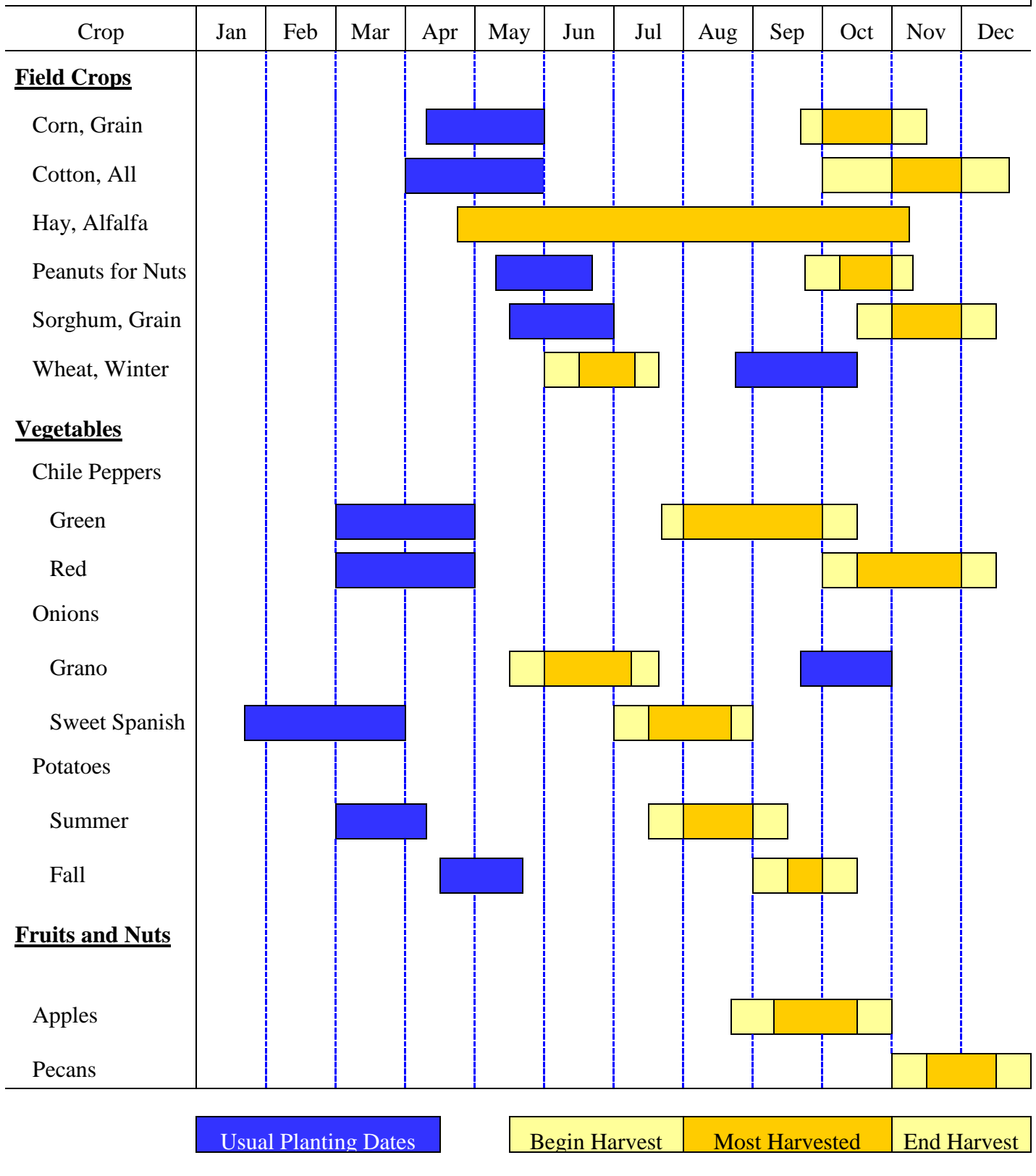
^{4/} Included in number of cattle operations.

Census Number of Farms by County^{1/}

District/County	Number of Farms			District/County	Number of Farms		
	1997	2002	2007		1997	2002	2007
District 10	5,501	4,703	9,464	District 30 (cont.)			
Bernalillo	680	618	635	Roosevelt	913	804	876
Cibola	214	155	317	San Miguel	783	565	765
Los Alamos	9	6	---	Torrance	620	461	561
McKinley	266	150	2,624	Union	546	419	380
Rio Arriba	1,136	988	1,312	District 70	1,780	1,404	1,755
Sandoval	465	347	652	Catron	286	206	259
San Juan	880	808	1,897	Grant	372	272	327
Santa Fe	515	460	489	Hidalgo	176	144	162
Taos	498	453	637	Luna	243	171	206
Valencia	838	718	901	Sierra	217	223	265
District 30	5,890	4,739	5,389	Socorro	486	388	536
Colfax	398	284	302	District 90	4,705	4,324	4,315
Curry	808	677	681	Chaves	689	604	584
De Baca	223	188	173	Doña Ana	1,681	1,691	1,762
Guadalupe	275	208	258	Eddy	603	510	543
Harding	204	129	168	Lea	682	554	572
Mora	444	410	589	Lincoln	448	343	361
Quay	676	594	636	Otero	602	622	493
STATE					17,876	15,170	20,930

^{1/}County level data does not include individual Native American farms on reservations/pueblos.

Planting and Harvesting Dates



Climate, 2009

County	Station	Elevation (Feet)	Temperature	Freeze Date		Annual Precipitation		
			Years of Record	Last Spring Freeze	First Fall Freeze	Years of Record	Normal (Inches)	2009
Bernalillo	Albuquerque ^{1/}	5,310	108	4/02	10/28	139	9.47	6.67
Catron	Luna Ranger Station	7,050	77	6/17	9/22	87	17.57	15.97
Chaves	Roswell Ind AP	3,649	39	4/17	10/30	39	13.34	8.56
Cibola	Grants Airport	6,520	57	4/30	9/23	57	10.87	8.93
Colfax	Raton Filter Plant	6,932	57	4/27	9/22	57	18.32	14.80
Curry	Clovis	4,435	61	4/20	9/23	61	17.69	17.54
De Baca	Ft. Sumner	4,025	86	4/07	10/30	95	14.41	12.83
Doña Ana	Las Cruces ^{2/}	3,881	113	2/22	10/30	147	9.40	8.77
Eddy	Carlsbad	3,120	106	4/08	10/30	111	14.12	11.78
Grant	Ft. Bayard	6,142	123	4/17	10/29	132	16.25	*14.06
Guadalupe	Santa Rosa	4,610	93	4/10	10/11	104	15.69	9.06
Harding	Roy	5,868	64	4/18	10/2	96	16.37	11.07
Hidalgo	Lordsburg	4,250	68	4/27	10/26	125	12.21	6.56
Lea	Hobbs	3,660	87	4/07	11/04	88	^{4/}	^{5/}
Lincoln	Carrizozo 1 SW	5,405	93	4/27	10/02	99	13.51	^{5/}
Los Alamos	Los Alamos	7,424	84	4/18	9/22	88	18.93	*18.60
Luna	Deming	4,300	90	4/17	10/29	117	10.58	*6.35
McKinley	Gallup Sand and Gravel	6,505	2	4/27	10/1	2	^{4/}	*8.68
Mora	Ocate 2 NW	7,655	48	5/17	9/22	50	16.44	*15.70
Otero	Tularosa	4,350	84	4/17	10/29	96	11.3	9.46
Quay	Tucumcari 4 NE	4,086	101	4/13	10/02	105	16.57	12.26
Rio Arriba	Chama	7,850	96	6/15	8/8	103	22.96	20.77
Roosevelt	Portales	4,010	85	4/17	10/11	91	17.17	^{5/}
San Juan	Farmington	5,625	56	4/27	9/22	89	10.78	*4.08
San Miguel	Las Vegas	6,349	28	5/28	9/22	28	16.96	*15.98
Sandoval	Jemez Springs	6,262	97	5/02	9/22	97	16.96	*15.60
Santa Fe	Santa Fe 2	6,756	39	4/27	9/22	39	14.21	^{5/}
Sierra	Elephant Butte Dam	4,576	102	2/22	10/29	102	10.65	8.60
Socorro	Socorro	4,585	107	^{3/}	^{3/}	111	10.22	^{5/}
Taos	Taos	6,965	96	^{3/}	9/22	107	^{4/}	^{5/}
Torrance	Moriarty	6,220	12	4/27	9/22	12	^{4/}	*10.12
Union	Clayton Muni ArPk	4,960	101	4/10	10/10	101	15.13	11.92
Valencia	Los Lunas 3 SSW	4,840	53	4/20	10/02	53	9.93	*8.95

* Insufficient or partial data if 1-9 daily values are missing.

^{1/} National Weather Service Forecast Office - International Airport.

^{2/} Station is officially known as "State University."

^{3/} Data insufficient to determine date.

^{4/} Data not available.

^{5/} Values are missing when ten or more daily values are missing.

SOURCE: Climatological Data Annual Summary, New Mexico, 2009, Volume 113-Number 13, National Oceanic and Atmospheric Administration.

Fertilizer Shipped into New Mexico, 2009

Single-Nutrient Materials	First Quarter	Second Quarter	Third Quarter	Fourth Quarter	Total 2009
-----Tons-----					
NITROGEN MATERIALS					
Anhydrous Ammonia	1,288	2,962	1,240	192	5,682
Ammonium Nitrate	---	---	---	45	45
Ammonium Nitrate Phosphate	16	0	0	0	16
Animal Manure	20,574	1,316	120	119	22,129
Ammonium Phosphate Sulfate	29	7	29	1	66
Ammonium Polysulfide	9	114	5	0	128
Ammonium Sulfate	1,246	2,530	1,218	153	5,147
Ammonium Thiosulfate	132	754	276	293	1,455
Calcium Ammonium Nitrate	0	348	430	71	849
Calcium Nitrate	0	3	3	6	12
Diammonium Phosphate	203	139	76	0	418
Mono Ammonium Phosphate	5,002	2,258	992	1,574	9,826
Nitrogen Solution	3,979	17,021	11,947	1,652	34,599
Superphosphate, Single	0	34	0	0	34
Urea	5,552	9,048	2,345	845	17,790
TOTAL NITROGEN MATERIALS	38,030	36,534	18,681	4,951	98,196
PHOSPHATE MATERIALS					
Liquid Ammonium Polyphosphate	1,182	3,818	480	3	5,483
Phosphoric Acid, Liquid	1	1	1	46	49
Superphosphate, Treble	53	1	355	0	409
TOTAL PHOSPHATE MATERIALS	1,236	3,820	836	49	5,941
POTASH MATERIALS					
Muriate of Potash	5,317	2,186	265	1,887	9,655
Potassium Magnesium Sulfate	1,140	621	208	42	2,011
Potassium Sulfate	620	314	80	24	1,038
TOTAL POTASH MATERIALS	7,077	3,121	553	1,953	12,704
TOTAL SINGLE-NUTRIENT TONS	1,076	1,860	170	856	3,962
TOTAL MULTI-NUTRIENT TONS AND OTHER^{1/}	23,525	48,424	22,450	10,109	104,508
GRAND TOTAL	70,944	93,759	42,690	17,918	225,311

^{1/}Other includes secondary, organics, and miscellaneous materials; excludes lime.

SOURCE: Feed, Seed, and Fertilizer Bureau, New Mexico Department of Agriculture.

Commercial Feed 2009 Sales

Kind of Feed	First Quarter	Second Quarter	Third Quarter	Fourth Quarter	Grand Total
	-----Tonnage-----				
Alfalfa Products	762	685	872	752	3,071
Animal By-Products	2,954	3,049	1,514	802	8,319
Barley Products	174	387	484	111	1,156
Beet Pulp Pellets	10,774	13,030	7,401	8,286	39,491
Canola Pellets	53,523	39,676	21,892	32,963	148,054
Cattle Feeds	136,902	107,052	89,858	151,330	485,142
Corn Products	154,224	161,704	153,766	157,154	626,848
Cottonseed Products	17,582	12,238	10,839	7,284	47,943
Custom Mixed Feeds	6,420	9,470	16,806	36,595	69,291
Dairy Feeds	89,233	85,355	48,369	37,313	260,270
Distillers By-Products	69,062	71,172	44,826	63,206	248,266
Fish Feeds	88	112	70	109	379
Grain Sorghum Products	16,190	21,529	22,888	22,455	83,062
Horse Feeds	6,461	6,566	6,278	6,002	25,307
Mineral Feeds	10,952	11,964	10,707	13,553	47,176
Miscellaneous ^{1/}	44,013	18,163	43,831	13,618	119,625
Molasses	10,506	8,059	1,520	13,760	33,845
Molasses-Urea Feed	5,727	3,014	1,610	2,535	12,886
Oat Products	389	378	371	286	1,424
Other Mixed Feeds	1,914	583	540	907	3,944
Other Products	615	596	2,868	1,429	5,508
Oyster Shell Products	4	3	1	2	10
Peanut Meal/Ground Hulls	2,621	3,366	3,395	2,870	12,252
Pet Foods ^{2/}	11,324	10,554	7,690	13,359	42,927
Poultry Feeds	2,406	2,500	3,002	3,779	11,687
Rabbit Feeds	224	246	213	213	896
Rice Mill By-Products	0	7	4	5	16
Sheep Feeds	498	746	430	260	1,934
Soybean Products	33,279	34,394	33,725	26,875	128,273
Swine Feeds	308	376	461	355	1,500
Turkey Feeds	49	81	96	9	235
Urea Feed Products	27	0	77	19	123
Wheat Products	880	1,840	2,112	907	5,739
TOTAL TONNAGE	690,085	628,895	538,516	619,103	2,476,599

^{1/} Miscellaneous tonnage includes products unidentified on quarterly reports submitted by manufacturers.

^{2/} Tonnage of pet food does not include total amount merchandised in packages of 10 pounds or less.

SOURCE: Feed, Seed, and Fertilizer Bureau, New Mexico Department of Agriculture.

FARM SECTOR ECONOMIC ANALYSIS

INCOME

The total value of the agriculture sector output from New Mexico farms and ranches decreased by 12 percent from \$3.4 billion in 2008 to \$3.0 billion in 2009. The value of livestock production decreased to \$2.0 billion in 2009, down 17 percent from 2008. The value of crop production decreased to \$697 million, down 1.5 percent. Revenues from forestry and services totaled \$273 million in 2009, up 13 percent from the previous year. Direct government payments increased 9.6 percent to \$81.8 million. After deductions for production expenses, hired labor, and other economic factors, the state's net farm income totaled \$432 million.

PRODUCTION EXPENSES

New Mexico farmers and ranchers purchased \$2.0 billion of inputs in 2009 to produce crops and livestock. This was almost in line with 2008. As in previous years, livestock feed continued to be the largest purchase at \$661 million, followed by livestock purchases of \$418 million. The repair and maintenance of capital items cost farmers and ranchers an increase of 10 percent to \$137 million, and petroleum fuel and oil costs dropped 22 percent to \$106 million. Property taxes were lower by 9.4 percent coming in at \$41 million.

CASH RECEIPTS

New Mexico crop and livestock product sales in 2009 totaled \$2.7 billion, a 13.6 percent decrease from the previous year. Total cash receipts from livestock products decreased in 2009 to \$2.0 billion. The number one cash commodity for the state was cattle and calves followed by milk as the number two cash commodity. Total crop cash receipts decreased to \$701 million. Hay sales dropped to \$175 million in 2009 but still remain the third largest cash commodity in the state. Pecans were fourth in the state in total cash receipts boasting a 92 percent increase during the on-year. Corn, including silage was the fifth largest commodity. Greenhouse and nursery receipts were steady at \$62 million and were

ranked sixth. Onions were ranked seventh with \$54 million, a 13 percent increase from 2008. Wheat, chile, and cotton were again in the state's top ten commodities.

GOVERNMENT PAYMENTS

Direct government payments to New Mexico producers totaled \$82 million in 2009, up 10 percent from 2008 payments of \$75 million. If ranked with cash receipts, government payments would be our sixth largest cash commodity. Conservation program payments decreased to \$38 million. Fixed Direct payments were down to \$15 million in 2009. Counter-Cyclical payments increased to \$7.0 million, from \$5.0 million a year earlier. Milk Income Loss Payments increased to \$11 million from \$8,000 a year earlier.

PRICES

Cattle prices declined during 2009. Prices for beef cattle averaged \$72.90 per hundredweight (cwt), a decrease of \$6.40 from the 2008 price. Calf prices dropped \$8.00 per cwt, to \$105.00. Cow prices, at \$47.90 per cwt, decreased by \$6.20 per cwt. Steer and heifer prices averaged \$88.70 per cwt compared to \$95.80 in 2008. Milk prices, at \$12.10 per cwt, decreased from the previous year's level of \$17.50. per cwt.

Alfalfa prices for the year averaged \$154.00 per ton, 19 percent below the 2008 average price. All hay decreased by \$34 from the 2008 price of \$186 to \$152 per ton in 2009. Other hay prices averaged \$126 per ton in 2009, compared to \$155 in 2008. Prices for cotton, peanuts, and onions increased in 2009. Corn for grain, wheat, dry beans, potatoes, and sorghum silage showed decreases from 2008. Pecan average price showed an increase of \$0.31 for the marketing season. Chile prices also improved from 2008 averaging \$789 per ton.

Net Income from Farming^{1/}

	2005 ^{2/}	2006 ^{2/}	2007 ^{2/}	2008 ^{2/}	2009
-----1,000 Dollars-----					
Value of crop production	629,578	613,330	723,211	708,375	697,437
Value of livestock production	2,037,621	1,910,512	2,312,960	2,422,091	2,010,898
Revenues from services and forestry	233,947	222,718	233,676	241,924	273,460
Machine hire and custom work	27,774	21,162	28,387	24,621	64,884
Forest products sold	4,500	4,500	4,600	4,600	4,600
Other farm income	66,531	78,139	76,422	89,960	74,824
Gross imputed rental value of farm dwellings	135,142	118,917	124,267	122,743	129,152
Value of Agricultural Sector Production	2,901,146	2,746,560	3,269,847	3,372,390	2,981,795
less: Purchased inputs	1,595,002	1,737,741	1,903,029	2,009,829	1,967,603
Farm origin	941,823	997,985	1,096,727	1,133,115	1,109,177
Feed purchased	453,776	539,597	633,261	684,130	660,696
Livestock and poultry purchased	460,355	430,804	439,244	421,148	418,113
Seed purchased	27,692	27,584	24,222	27,837	30,368
Manufactured inputs	193,761	205,056	246,935	296,223	252,980
Fertilizers and lime	41,030	42,471	54,138	67,261	63,086
Pesticides	24,683	25,678	28,278	33,456	31,465
Petroleum fuel and oils	85,490	95,506	117,248	137,039	106,357
Electricity	42,558	41,401	47,271	58,467	52,072
Other purchased inputs	459,418	534,700	559,367	580,491	605,446
Repair and maintenance of capital items	89,173	105,235	116,339	124,319	137,061
Machine hire and custom work	15,924	22,252	25,450	24,647	27,423
Marketing, storage, and transportation expenses	105,578	112,181	102,514	114,148	115,830
Contract labor	24,510	30,771	37,855	36,856	39,074
Miscellaneous expenses	224,233	264,261	277,209	280,521	286,058
plus: Net government transactions	80,861	40,824	12,160	22,530	33,253
+ Direct government payments	116,636	82,602	66,974	74,629	81,768
- Motor vehicle registration and licensing fees	5,502	4,693	6,563	6,659	7,354
- Property taxes	30,273	37,085	48,251	45,440	41,161
Gross Value Added	1,387,005	1,049,643	1,378,978	1,385,091	1,047,444
less: Capital consumption	138,442	148,725	156,631	160,730	167,913
Net Value Added	1,248,563	900,918	1,222,347	1,224,361	879,531
less: Payments to stakeholders	372,679	389,197	417,406	421,784	447,828
Employment compensation (total hired labor)	228,594	235,117	265,792	261,846	285,962
Net rent received by nonoperator landlords	41,427	37,416	29,819	34,860	38,703
Real estate and nonreal estate interest	102,658	116,664	121,795	125,078	123,163
Net Farm Income	875,884	511,721	804,941	802,577	431,703

^{1/} Value of agricultural sector production is the gross value of the commodities and services produced within a year. Net value-added is the sector's contribution to the national economy and is the sum of the income from production earned by all factors of production. Net farm income is the farm operator's share of income from the sector's production activities. The concepts presented are consistent with those employed by the Organization for Economic Cooperation and Development (OECD).

^{2/}Revised.

SOURCE: USDA, Economic Research Service.

Cash Receipts: All Commodities^{1/}

Commodity	2009 Rank	2007 ^{2/}	2008 ^{2/}	2009
-----1,000 Dollars-----				
All Commodities		3,076,536	3,124,125	2,698,392
Livestock Products		2,364,472	2,408,100	1,997,449
Meat Animals		972,664	1,004,577	1,012,473
Cattle and Calves	1	967,123	999,419	1,007,546
Sheep and Lambs	16	5,326	4,923	4,741
Hogs and Pigs	19	215	235	186
Milk	2	1,353,788	1,363,250	950,213
Wholesale		1,353,788	1,363,250	950,213
Poultry and Eggs ^{3/}	13	14,917	17,183	12,160
Miscellaneous Livestock		23,123	23,090	22,603
Wool and Mohair	18	1,620	1,664	918
Other Livestock		21,503	21,426	21,685
Crops		712,064	716,025	700,943
Feed Crops		222,601	339,333	280,420
Hay	3	188,329	222,018	174,706
Sorghum	11	17,352	19,064	14,667
Grain		9,852	7,464	3,467
Silage		7,500	11,600	11,200
Corn	5	94,420	109,851	102,247
Grain		24,420	39,251	32,747
Silage		70,000	70,600	69,500
Food Grains		41,455	37,667	17,932
Wheat	10	41,455	37,667	17,932
Cotton	9	38,106	30,313	21,627
Cotton Lint		33,522	25,028	18,094
Cottonseed	17	4,584	5,285	3,533
Peanuts	15	6,400	6,195	7,118
Vegetables		148,852	141,817	158,916
Dry Beans	14	6,460	9,727	11,755
Onions	7	73,840	47,520	53,900
Potatoes	12	12,875	12,259	13,849
Chile ^{4/}	8	28,677	42,311	49,412
Miscellaneous Vegetables		27,000	30,000	30,000
Fruits and Nuts		111,500	79,650	136,980
Pecans	4	96,200	62,350	119,680
Other Fruits and Nuts		15,300	17,300	17,300
All Other Crops		65,650	69,450	66,750
Greenhouse Nursery	6	62,100	62,050	62,050
Other Field Crops and Seeds		3,550	7,400	4,700

^{1/} Does not include cash receipts for livestock grazing. May not sum due to rounding.

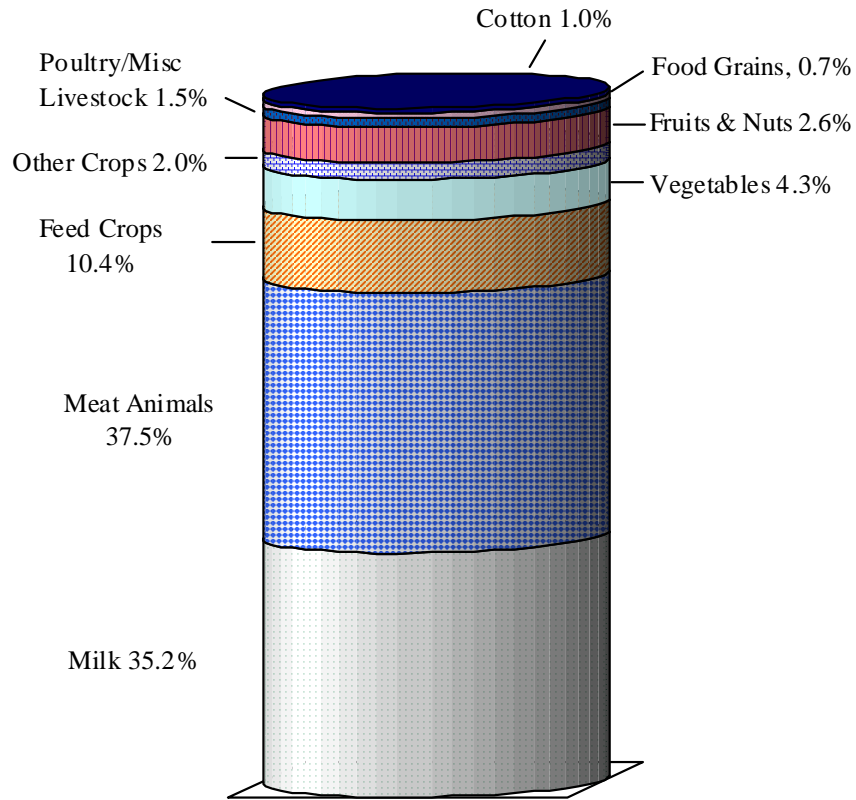
^{2/} Revised.

^{3/} Poultry and Eggs include farm chickens and eggs, turkeys, ducks, geese, etc.

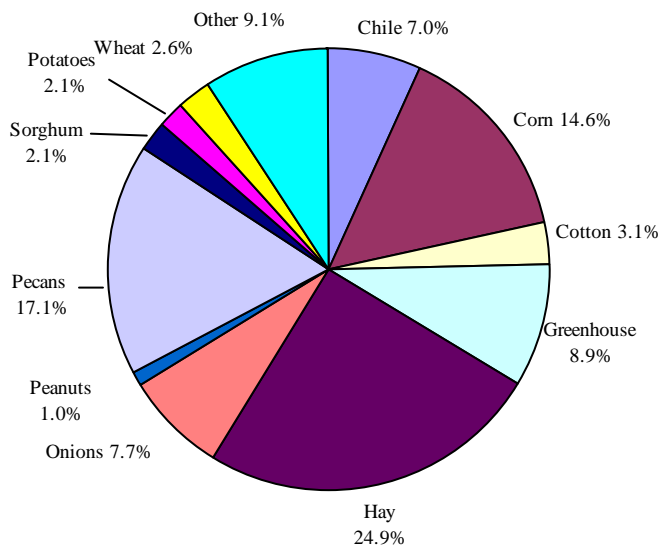
^{4/} Preliminary 2009 cash receipts

New Mexico Cash Receipts, 2009

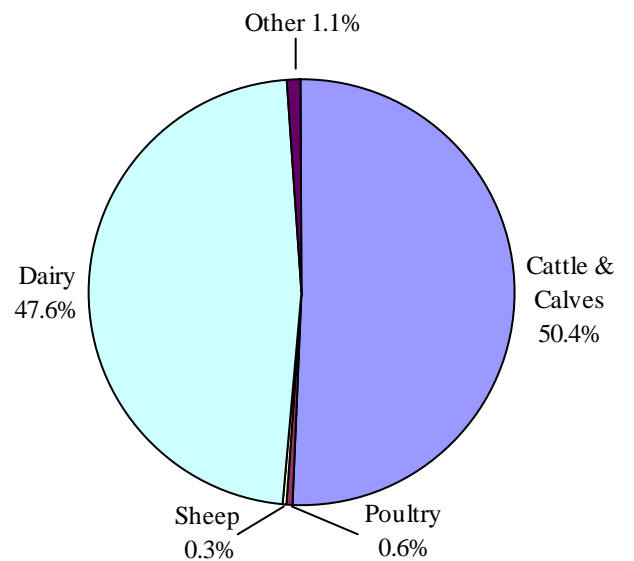
All Commodities



Crops



Livestock



Cash Receipts: All Farm Commodities by County^{1/}

District/County	2009 Rank	-----All Farm Commodities-----		
		2007 ^{2/}	2008 ^{2/}	2009
				-----1,000 Dollars-----
DISTRICT 10		249,758	259,142	237,326
Bernalillo	22	27,856	23,948	20,361
Cibola	30	10,275	10,495	9,185
McKinley	16	25,660	25,053	25,178
Rio Arriba	23	23,775	24,741	19,952
Sandoval	31	10,099	10,619	9,083
San Juan	8	79,556	84,252	81,275
Santa Fe	28	10,536	12,872	12,972
Taos	32	8,714	8,711	7,202
Valencia	12	53,287	58,451	52,118
DISTRICT 30		1,247,136	1,348,719	1,158,739
Colfax	19	24,664	26,910	21,479
Curry	1	504,245	557,487	489,022
De Baca	18	19,683	23,785	22,561
Guadalupe	24	17,144	16,985	17,690
Harding	27	15,863	16,684	13,488
Mora	29	12,599	13,610	11,262
Quay	14	37,129	35,962	30,347
Roosevelt	4	369,711	403,050	303,045
San Miguel	15	32,624	34,614	29,867
Torrance	11	60,183	62,234	54,224
Union	5	153,291	157,398	165,753
DISTRICT 70		232,756	245,565	220,269
Catron	26	15,683	15,216	14,827
Grant	25	15,353	16,463	16,171
Hidalgo	17	25,023	29,333	25,121
Luna	9	72,142	64,644	66,394
Sierra	13	38,963	44,366	36,653
Socorro	10	65,592	75,543	61,104
DISTRICT 90		1,346,905	1,270,700	1,082,058
Chaves	3	510,746	527,100	394,191
Doña Ana	2	456,569	411,805	405,429
Eddy	7	158,715	131,566	101,034
Lea	6	182,576	163,131	139,580
Lincoln	20	20,223	19,512	21,255
Otero	21	18,076	17,586	20,569
STATE		3,076,556	3,124,125	2,698,392

^{1/} Does not include cash receipts received for livestock grazing. May not sum due to rounding.

^{2/} Revised.

Cash Receipts: All Livestock, All Crops^{1/}

County	-----All Livestock-----			-----All Crops-----		
	2007 ^{2/}	2008	2009	2007 ^{2/}	2008	2009
	-----1,000 Dollars-----					
DISTRICT 10	145,969	139,566	124,191	103,789	119,575	113,135
Bernalillo	21,221	16,252	13,744	6,635	7,696	6,617
Cibola	9,278	9,363	8,287	997	1,133	899
McKinley	21,408	20,364	20,660	4,251	4,689	4,518
Rio Arriba	15,497	15,079	12,577	8,279	9,662	7,375
Sandoval	6,376	6,432	6,001	3,723	4,187	3,082
San Juan	20,902	16,335	14,079	58,654	67,917	67,196
Santa Fe	5,533	5,056	5,747	5,003	7,816	7,225
Taos	4,843	4,364	4,039	3,871	4,347	3,163
Valencia	40,911	46,322	39,057	12,376	12,129	13,061
DISTRICT 30	1,054,075	1,142,276	998,221	193,061	206,442	160,518
Colfax	20,154	20,930	18,089	4,510	5,980	3,389
Curry	439,094	489,345	434,289	65,151	68,142	54,733
De Baca	14,127	14,798	16,627	5,556	8,987	5,934
Guadalupe	16,646	16,240	16,863	498	744	828
Harding	15,188	15,877	12,863	675	807	625
Mora	9,789	9,881	8,780	2,810	3,729	2,482
Quay	24,459	24,674	23,807	12,670	11,288	6,541
Roosevelt	317,071	358,840	265,233	52,640	44,210	37,811
San Miguel	23,359	24,688	20,628	9,265	9,926	9,239
Torrance	39,461	38,334	34,238	20,722	23,900	19,985
Union	134,727	128,669	146,804	18,564	28,729	18,950
DISTRICT 70	147,045	158,810	137,526	85,711	86,755	82,744
Catron	15,334	14,906	14,593	349	311	234
Grant	14,736	15,984	15,615	618	479	556
Hidalgo	15,063	14,726	12,150	9,959	14,607	12,970
Luna	16,609	17,511	19,670	55,532	47,133	46,724
Sierra	29,173	30,249	23,465	9,791	14,118	13,188
Socorro	56,130	65,434	52,032	9,462	10,109	9,072
DISTRICT 90	1,017,403	967,448	737,512	329,502	303,252	344,547
Chaves	453,338	470,196	337,306	57,407	56,904	56,885
Doña Ana	281,323	261,824	203,064	175,246	149,981	202,365
Eddy	99,719	75,799	54,938	58,996	55,767	46,096
Lea	153,494	131,590	110,553	29,082	31,541	29,027
Lincoln	19,464	18,441	20,499	759	1,071	756
Otero	10,064	9,598	11,151	8,012	7,988	9,418
STATE	2,364,492	2,408,100	1,997,449	712,064	716,025	700,943

^{1/} Does not include cash receipts received for livestock grazing. May not sum due to rounding.

^{2/} Revised.

Cash Receipts: Cattle and Calves, Milk^{1/}

District/County	-----Cattle and Calves-----			-----Milk ^{2/} -----		
	2007	2008 ^{3/}	2009	2007	2008 ^{3/}	2009
-----1,000 Dollars-----						
DISTRICT 10	95,850	90,362	85,547	40,484	39,364	30,055
Bernalillo	3,910	3,941	4,255	^{4/}	^{4/}	^{4/}
Cibola	8,937	9,008	7,977	---	---	---
McKinley	18,990	18,015	18,614	---	---	---
Rio Arriba	14,522	14,074	11,700	---	---	---
Sandoval	5,585	5,630	5,318	---	---	---
San Juan	19,521	14,921	12,846	---	---	---
Santa Fe	4,468	3,941	4,786	---	---	---
Taos	3,910	3,378	3,191	---	---	---
Valencia	16,007	17,454	16,860	^{4/}	^{4/}	^{4/}
DISTRICT 30	511,027	548,578	574,593	533,901	584,097	415,237
Colfax	18,990	19,704	17,018	---	---	---
Curry	162,060	198,798	211,103	276,700	290,205	222,887
De Baca	13,964	14,637	16,486	---	---	---
Guadalupe	15,639	15,200	15,954	---	---	---
Harding	15,081	15,763	12,764	---	---	---
Mora	9,495	9,571	8,509	---	---	---
Quay	24,017	24,208	23,400	---	---	---
Roosevelt	72,052	76,679	79,169	^{4/}	^{4/}	^{4/}
San Miguel	22,900	24,208	20,209	---	---	---
Torrance	22,342	21,393	23,400	^{4/}	^{4/}	^{4/}
Union	134,486	128,415	146,581	---	---	---
DISTRICT 70	96,614	97,567	96,921	45,498	56,050	36,066
Catron	15,081	14,637	14,359	---	---	---
Grant	14,522	15,763	15,423	---	---	---
Hidalgo	12,846	12,386	10,104	---	---	---
Luna	16,184	17,061	19,276	---	---	---
Sierra	13,405	14,074	13,295	^{4/}	^{4/}	^{4/}
Socorro	24,576	23,645	24,463	^{4/}	^{4/}	^{4/}
DISTRICT 90	263,632	262,912	250,485	733,905	683,739	468,855
Chaves	100,538	112,596	95,727	351,539	356,291	240,439
Doña Ana	61,998	56,298	56,904	204,275	189,602	132,241
Eddy	27,927	25,897	24,463	71,311	49,422	30,055
Lea	45,801	42,223	43,609	106,780	88,424	66,121
Lincoln	17,873	16,889	19,145	---	---	---
Otero	9,495	9,008	10,636	---	---	---
STATE	967,123	999,419	1,007,546	1,353,788	1,363,250	950,213

^{1/} Does not include cash receipts received for livestock grazing. May not sum due to rounding.

^{2/} Milk cow estimates are not made for counties with fewer than 200 head.

^{3/} Revised.

^{4/} Included only in District Totals to prevent disclosure.

Cash Receipts: Hay^{1/}

District/County	2009 Rank	Hay		
		2007	2008 ^{2/}	2009
		-----1,000 Dollars-----		
DISTRICT 10		42,162	49,061	38,880
Bernalillo	14	3,363	4,188	3,030
Cibola	30	374	439	164
McKinley	28	710	718	278
Rio Arriba	15	4,148	5,126	2,777
Sandoval	24	1,843	2,167	1,010
San Juan	4	18,434	21,865	19,301
Santa Fe	18	1,993	2,695	2,108
Taos	19	2,840	3,222	2,007
Valencia	7	8,457	8,641	8,205
DISTRICT 30		50,072	60,777	42,919
Colfax	16	3,699	5,126	2,525
Curry	8	10,550	12,888	7,700
De Baca	12	3,762	4,774	3,787
Guadalupe	25	361	600	682
Harding	27	473	688	505
Mora	22	2,117	2,812	1,704
Quay	17	3,587	4,833	2,209
Roosevelt	5	13,290	14,352	11,613
San Miguel	23	1,706	1,816	1,149
Torrance	6	8,968	11,130	9,152
Union	20	1,557	1,757	1,893
DISTRICT 70		16,566	18,892	15,905
Catron	31	249	205	126
Grant	29	361	190	265
Hidalgo	11	3,936	5,155	3,850
Luna	13	3,537	3,632	3,320
Sierra	21	1,943	2,416	1,856
Socorro	10	6,539	7,293	6,488
DISTRICT 90		79,529	93,289	77,002
Chaves	3	23,915	25,482	21,964
Doña Ana	2	19,792	24,633	22,974
Eddy	1	27,963	33,830	24,805
Lea	9	7,162	8,201	6,564
Lincoln	32	125	381	63
Otero	26	573	762	631
STATE		188,329	222,018	174,706

^{1/} May not sum due to rounding.

^{2/} Revised.

Cash Receipts:

Wheat and Cotton^{1/}

District/County	Wheat			Cotton		
	2007 ^{2/}	2008	2009	2007 ^{2/}	2008 ^{2/}	2009
	----- 1,000 Dollars -----					
DISTRICT 10	5,105	6,529	2,587	---	---	---
DISTRICT 30	35,523	29,954	14,730	6,998	3,810	1,850
Curry	15,955	14,551	7,157	---	---	---
Quay	^{4/}	^{4/}	3,100	---	---	---
Roosevelt	^{4/}	^{4/}	2,459	---	---	---
DISTRICT 70	384	---	---	3,274	2,704	1,608
DISTRICT 90	443	1,184	615	27,835	23,800	18,170
Chaves	---	---	---	^{4/}	^{4/}	541
Doña Ana	---	---	---	9,428	9,872	5,535
Eddy	---	---	---	^{4/}	^{4/}	2,419
Lea	---	---	615	13,564	8,029	9,675
STATE	41,455	37,667	17,932	38,106	30,313	21,627

Corn^{1/}

District/County	Corn for Grain			Corn for Silage		
	2007 ^{2/}	2008 ^{2/}	2009	2007	2008 ^{2/}	2009
	----- 1,000 Dollars -----					
District 10	5,778	8,009	11,116	1,435	2,722	3,960
District 30	17,335	28,844	18,622	35,070	31,370	34,783
Curry	3,015	6,276	3,133	18,620	14,120	16,896
Roosevelt	1,256	3,176	^{4/}	9,800	9,527	^{4/}
Union	12,210	19,229	13,594	^{4/}	^{4/}	^{4/}
District 70	1,105	2,062	1,664	4,025	3,402	2,838
Luna	^{3/}	^{3/}	^{3/}	^{4/}	^{4/}	1,914
Sierra	---	---	---	^{4/}	^{4/}	429
District 90	201	337	1,345	29,470	33,105	27,919
Chaves	---	---	---	17,150	16,195	15,312
Doña Ana	---	---	---	^{4/}	^{4/}	5,478
STATE	24,420	39,251	32,747	70,000	70,600	69,500

Sorghum^{1/}

District/County	Sorghum for Grain			Sorghum for Silage		
	2007	2008 ^{2/}	2009	2007	2008	2009
	----- 1,000 Dollars -----					
DISTRICTS 10 & 70	870	1,441	432	481	145	---
DISTRICT 30	8,588	4,843	2,658	6,339	11,165	7,420
Curry	^{4/}	^{4/}	1,415	^{4/}	6,742	7,280
DISTRICT 90	394	1,180	377	539	290	644
Chaves	^{4/}	^{4/}	57	^{4/}	^{4/}	532
Lea	^{4/}	^{4/}	252	^{4/}	^{4/}	112
STATE	9,852	7,464	3,467	7,500	11,600	8,064

^{1/} May not sum due to rounding. ^{2/} Revised. ^{3/} Not published to avoid disclosure

^{4/} County level not available due to insufficient reporting.

Cash Receipts:

Sheep and Other Livestock^{1/2/}

District/County	Sheep ^{3/}			Other Livestock ^{4/}		
	2007	2008 ^{5/}	2009	2007 ^{5/}	2008 ^{5/}	2009
-----1,000 Dollars-----						
DISTRICT 10	3,627	3,482	3,032	6,008	6,358	5,557
DISTRICT 30	785	754	657	8,361	8,848	7,734
DISTRICT 70	81	58	50	4,853	5,135	4,489
DISTRICT 90	2,092	1,990	1,732	17,773	18,807	16,439
STATE	6,586	6,283	5,471	36,995	39,148	34,219

Chile and Onions^{2/}

District/County	Chile-----			Onions-----		
	2007	2008 ^{5/}	2009	2007	2008	2009
-----1,000 Dollars-----						
Districts 10 and 30	235	211	340	2,665	2,160	2,940
District 70	18,552	22,753	22,361	25,183	19,440	18,424
Luna	14,719	16,336	15,564	21,348	14,400	14,112
District 90	9,891	19,347	26,711	45,991	25,920	32,536
Doña Ana	7,491	14,493	21,749	45,988	25,920	32,536
STATE	28,677	42,311	49,412	73,840	47,520	53,900

Other Crops and Other Vegetables^{2/}

District/County	Vegetables ^{6/}			Other Crops ^{7/}		
	2007 ^{5/}	2008 ^{5/}	2009	2007	2008 ^{5/}	2009
-----1,000 Dollars-----						
DISTRICT 10	30,281	33,974	36,338	9,021	9,472	9,642
DISTRICT 30	9,631	10,806	11,558	22,429	23,548	23,971
DISTRICT 70	4,201	4,713	5,041	5,709	5,993	6,101
DISTRICT 90	2,222	2,493	2,667	34,891	36,632	37,290
STATE	46,335	51,986	55,604	72,050	75,645	77,004

Pecans and Other Fruits and Nuts^{2/}

District/County	Pecans-----			Other Fruits & Nuts ^{8/} -----		
	2007	2008	2009	2007	2008	2009
-----1,000 Dollars-----						
DISTRICT 10 & 30	130	204	246	7,572	8,561	8,561
DISTRICT 70	3,530	2,755	5,914	2,172	2,456	2,456
Luna	^{9/}	^{9/}	3,168	^{9/}	^{9/}	^{9/}
Sierra	^{9/}	^{9/}	2,288	^{9/}	^{9/}	^{9/}
DISTRICT 90	92,541	59,392	113,520	5,557	6,283	6,283
Chaves	^{9/}	^{9/}	10,208	^{9/}	^{9/}	^{9/}
Doña Ana	65,000	45,675	91,696	^{9/}	^{9/}	^{9/}
Eddy	16,900	6,525	6,512	^{9/}	^{9/}	^{9/}
Otero	^{9/}	^{9/}	3,872	^{9/}	^{9/}	^{9/}
STATE	96,200	62,350	119,680	15,300	17,300	17,300

^{1/} Does not include cash receipts received for livestock grazing. ^{2/} May not sum due to rounding. ^{3/} Includes wool.

^{4/} Includes mohair, poultry, hogs, and other miscellaneous livestock. ^{5/} Revised. ^{6/} Excludes chile and onions.

^{7/} Includes peanuts and all other crops not presented separately. ^{8/} Excludes pecans. ^{9/} Included in district and state totals only.

Government Payments ^{1/}

Type of Payments	2008	2009
	-----1,000 Dollars -----	
Direct Payments	16,187	14,747
Counter-Cyclical Payments	5,048	7,151
Loan Deficiency Payments	178	177
Marketing Loan Gains	113	527
Commodity Certificate Exchange Gains	113	524
Milk Income Loss Payments	8	10,644
Conservation Payments ^{2/}	42,479	38,001
Ad Hoc and Emergency Programs ^{3/}	10,478	9,940
Miscellaneous Programs ^{4/}	56	57
GRAND TOTAL	74,661	81,768

^{1/} Amounts include cash payments made directly to farmers, not including Farmer-owned Reserve Payments as these data are not available by state. Amounts also include certificate exchange gains and marketing loan gains.

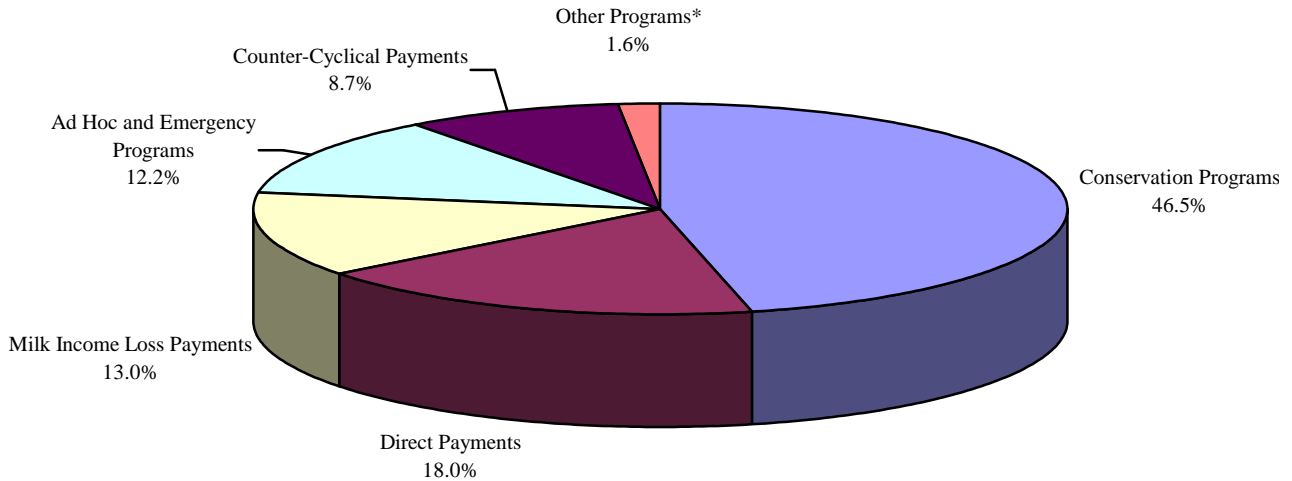
^{2/} Conservation programs: Agricultural Management Assistance Program, Agricultural Water Enhancement Program, Auto Conservation Reserve Program -- Cost Share, Biomass Crop Assistance Program, Conservation Reserve Program—Annual Rental Conservation Reserve Program--Cost Share, Conservation Reserve Program--Incentives, Conservation Security Program, Environmental Quality Incentives Program, EQIP--Ground and Surface Water Conservation, EQIP--Klamath Basin, EQIP 1996 Farm Bill Farmland Protection Program, Forestry Conservation Reserve Program, Grasslands Reserve Program, Wildlife Habitat Incentive Program.^{3/} Ad Hoc and Emergency Programs include all programs providing disaster and emergency assistance payments to growers. Programs include Crop Disaster Program, Crop Disaster Program 2005, Crop Disaster Assistance Program 2001/02, Crop Disaster Assistance Program 2005/07.

^{4/} Miscellaneous programs include Additional Interest Payments, American Indian Livestock Feed Program, DCCP—Violations, DCCP--Late Filing Fees, DCCP--Payment Limitation Overpayment, Feed Grain Deficiency Program, Feed Grain Deficiency Program, Interest Payments, Oilseed Program, Peanut Quota Buyout Program, Production Flexibility Contract Payments, Storage Forgiven, Supplemental Oilseed Payment Program, Wheat Deficiency Program.

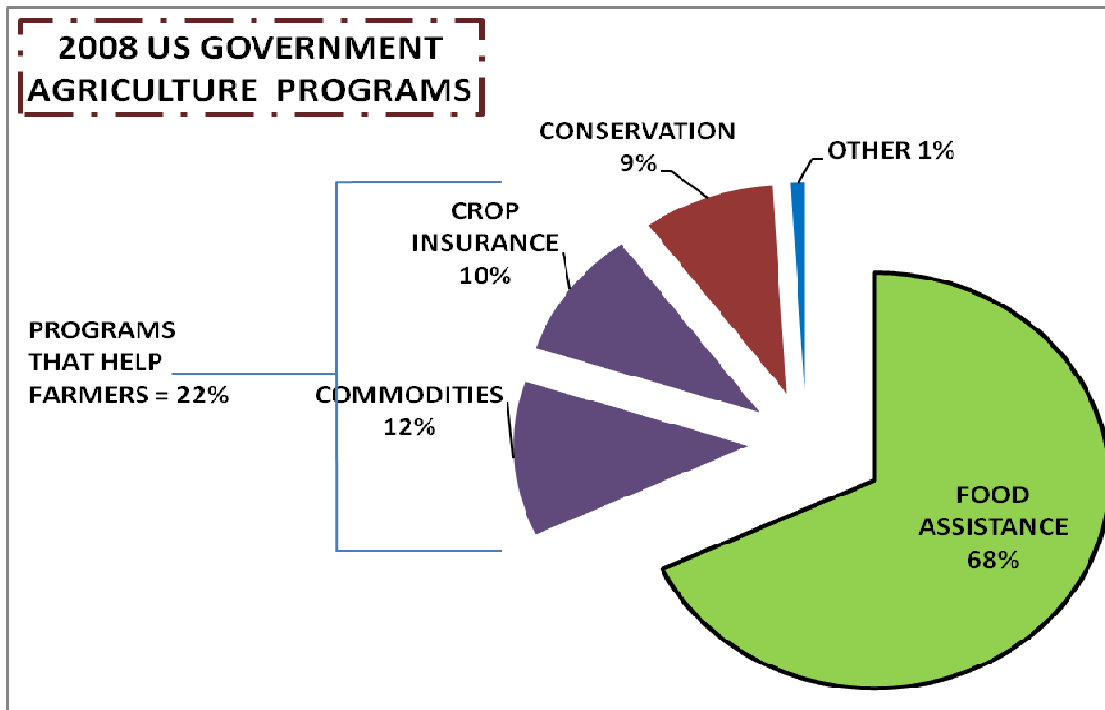
SOURCE: Economic Research Service/USDA

GOVERNMENT PAYMENTS

New Mexico, 2009



* Other Programs Include:
 Loan Deficiency Payments
 Marketing Loan Gains
 Commodity Certificate Exchange Gains
 Miscellaneous Programs

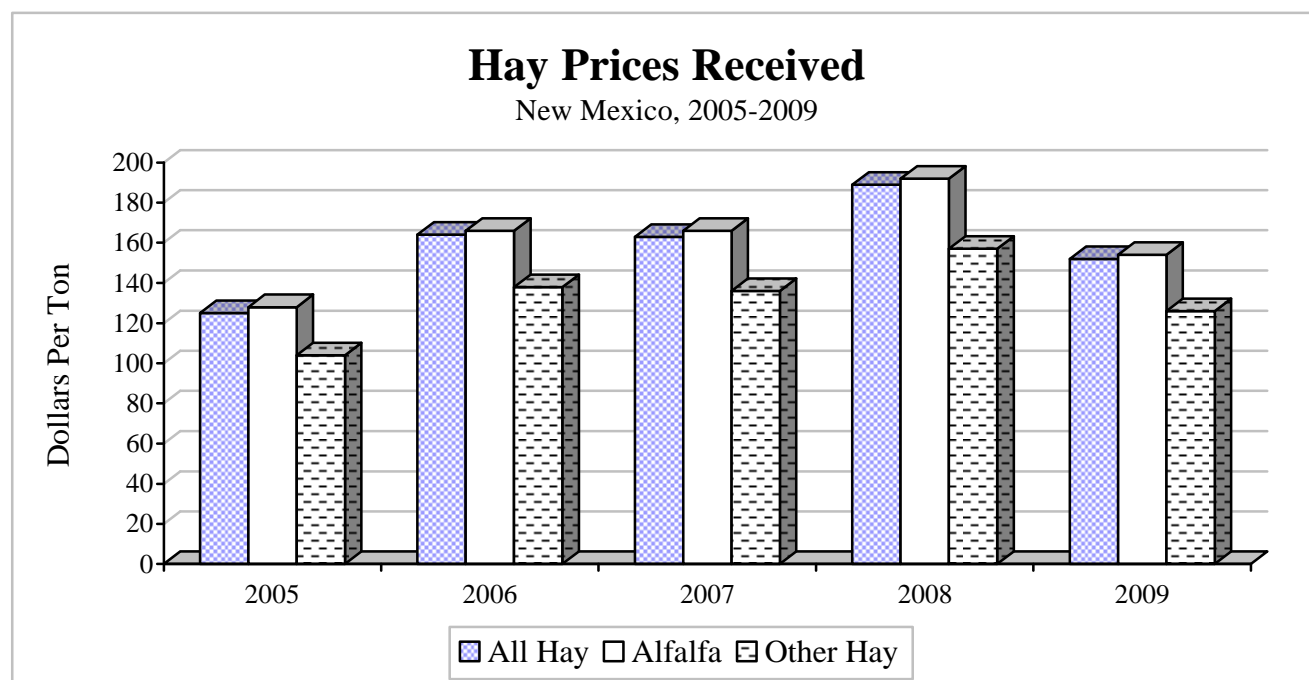


Prices Received for Hay

Year ^{1/} and Month	All Hay \$/Ton	Alfalfa \$/Ton	Other Hay \$/Ton
2005	125.00	128.00	104.00
2006	164.00	166.00	138.00
2007	164.00	167.00	137.00
2008 ^{2/}	186.00	190.00	155.00
2009	152.00	154.00	126.00
2009 January	190.00	195.00	158.00
February	187.00	194.00	158.00
March	188.00	194.00	158.00
April	190.00	196.00	160.00
May	180.00	183.00	149.00
June	165.00	168.00	137.00
July	148.00	150.00	123.00
August	142.00	144.00	118.00
September	134.00	136.00	111.00
October	139.00	141.00	115.00
November	146.00	148.00	121.00
December	144.00	146.00	119.00

^{1/} Yearly prices based on marketing year average price (Market year is May through following April).

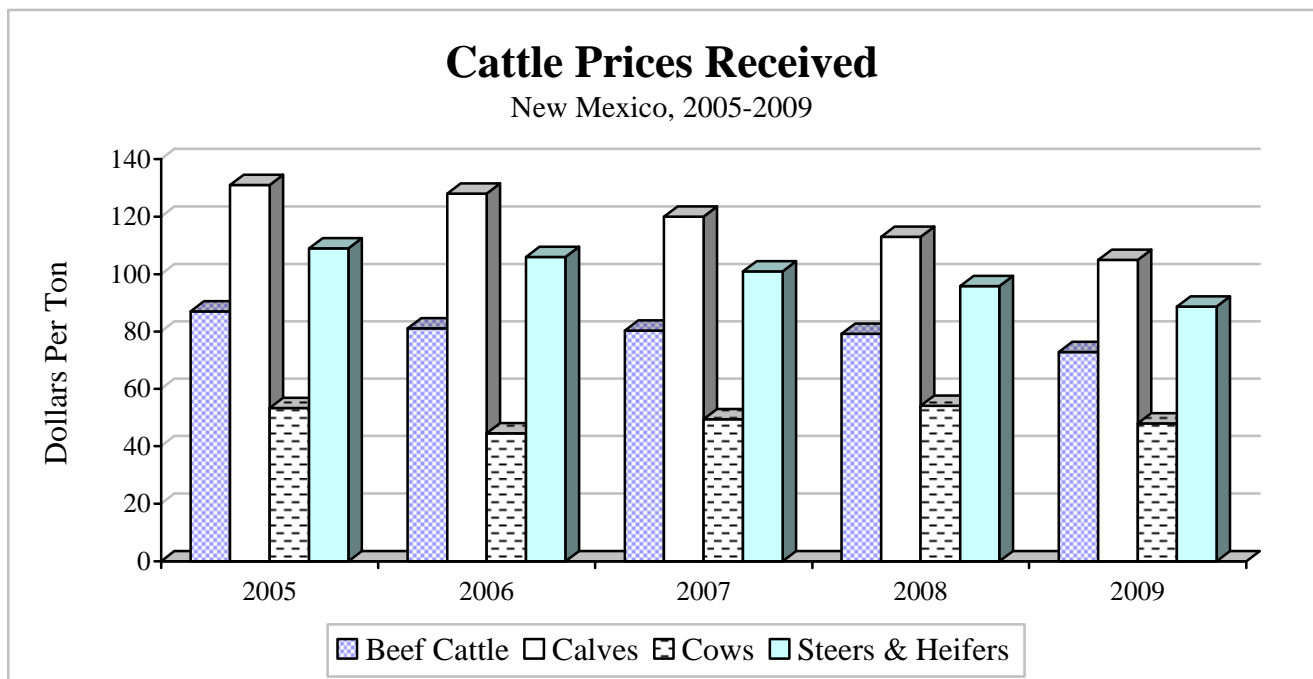
^{2/} Revised



Prices Received for Cattle

Year ^{1/} and Month	Beef Cattle \$/Cwt.	Calves \$/Cwt.	Cows \$/Cwt.	Steers & Heifers \$/Cwt.
2005	87.00	131.00	53.30	109.00
2006	81.10	128.00	44.50	106.00
2007	80.40	120.00	49.40	101.00
2008	79.30	113.00	54.10	95.80
2009	72.90	105.00	47.90	88.70
2009 January	69.10	106.00	44.50	87.70
February	71.00	106.00	46.90	87.00
March	73.30	107.00	47.20	88.00
April	77.50	110.00	51.00	91.10
May	77.40	111.00	51.00	91.00
June	72.50	105.00	46.50	86.50
July	73.50	102.00	48.50	89.50
August	73.60	105.00	48.00	90.00
September	73.60	103.00	48.00	90.00
October	72.40	100.00	47.00	88.00
November	70.10	103.00	45.00	89.00
December	69.70	100.00	48.00	86.00

^{1/} Yearly prices based on calendar year average price.



Grazing Fees

As of 2009, approximately 39 percent of New Mexico's total area of 77,667,840 acres is federal and state public trust land administered by the United States Department of Interior (USDI) Bureau of Land Management, the United States Department of Agriculture (USDA) Forest Service, and the New Mexico State Land Office. A majority of these public lands are leased for livestock grazing.

For the years 1979-1985, fees for grazing on federal public lands were determined by a formula established in the Public Rangelands Improvement Act of 1978 (PRIA). The act expired December 31, 1985. On February 14, 1986, in the absence of Congressional action, the President, through Executive Order 12548, indefinitely extended the PRIA formula, subject to a few minor changes.

These minor changes included: (1) the Forage Value Index would use the weighted average estimate of the annual rental charge per head per month rather than Animal Unit Month, (2) the Beef Cattle Price Index means the weighted average annual selling price for beef cattle in the 11 western states, and (3) the Prices Paid Index would reflect selected livestock production costs in the western states. In addition, the Executive Order specified the fee shall not be less than

\$1.35 per Animal Unit Month; and those annual adjustments would not exceed plus or minus 25 percent of the previous year's grazing fee.

Effective March 1988, the Secretary of Agriculture issued a final ruling that established regulations for annually determining federal grazing fees. The fee system now in effect is the formula prescribed in the Executive Order of February 1986 and, in most respects, is the same grazing fee formula enacted by Congress in 1978. Grazing fees will be based on a rate-per-head month.

A head month is a month's use and occupancy of range by one animal, except for sheep or goats. A full head month's fee is charged for a month of grazing by adult animals, if the grazing animal is weaned or 6 months of age or older at the time of entering the federal lands or will become 12 months of age during the permitted period of use. For fee purposes, five sheep or goats are equivalent to one cow, bull, steer, heifer, horse, or mule.

Grazing fee formula components are compiled by the USDA Agricultural Statistics Board and furnished to USDI Bureau of Land Management and the USDA Forest Service for calculating the grazing fee each year.

Public Land Grazing Fee Formulation *

Grazing Fee Components	Base Year 1964-68	2004	2005	2006	2007	2008	2009	2010
Grazing Rates on Private Land (Dollars) ^{1/}	3.65	13.40	13.80	14.60	15.10	15.60	16.20	16.10
Forage Value Index (FVI) ^{2/}	100	367	378	400	414	427	444	441
Average Price Received for Beef Cattle per Cwt (Dollars) ^{3/}	22.04	75.33	88.53	91.04	92.17	86.80	86.89	78.21
Beef Cattle Price Index (BCPI) ^{4/}	100	342	402	413	418	394	394	355
Prices Paid Index (PPI) ^{5/}	100	593	618	686	724	762	891	806
Federal Grazing Fee (Dollars) ^{6/}	(1.23)	1.43	1.79	1.56	1.35	1.35	1.35	1.35
State Grazing Fee (Dollars) ^{7/}		4.22	4.42	4.17	3.86	4.07	2.71	3.19

* The Federal Grazing Fee for the year specified, as constrained by Presidential Executive Order 12548, is based on prior year values for the formula components.

^{1/} Privately owned, nonirrigated land in 11 western states: Arizona, California, Colorado, Idaho, Montana, Nevada, New Mexico, Oregon, Utah, Washington, and Wyoming. Rates are per head month. Private fee grazing rates, for the prior year, are published by NASS-USDA in the January Agricultural Prices report.

^{2/} Private land grazing rates current year divided by base year times 100.

^{3/} Average for 12 months November-October prior to the fee year for 11 western states (see footnote 1). Average Beef Cattle Price Index for the November-October period is published by NASS-USDA in the December Agricultural Prices report.

^{4/} Beef cattle price current year divided by base year times 100.

^{5/} Index of prices paid for beef cattle production inputs as percent of base year. The Prices Paid Index for Beef Cattle Production for the November-October period are published by NASS-USDA in the December Agricultural Prices report.

^{6/} The grazing fee = base year fee (FVI + BCPI - PPI)/100. 2006 for example = \$1.23 (400 + 413 - 686)/100 = \$1.56 (Federal), per Executive Order, \$1.35 is the legal minimum.

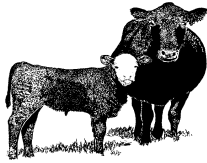
^{7/} Source: New Mexico State Land Office. Data not available prior to 1988.

Cash Rents by County

District/County	Pasture		Irrigated Cropland		Non-Irrigated Cropland	
	----- Dollars Per Acre -----					
	<u>2009</u>	<u>2010</u>	<u>2009</u>	<u>2010</u>	<u>2009</u>	<u>2010</u>
DISTRICT 10	2.70	1.40	74.50	58.50	---	---
Bernalillo	1.70	.80	---	---	---	---
Cibola	.90	---	---	---	---	---
McKinley	1.40	---	---	---	---	---
Rio Arriba	---	1.90	55.00	40.00	---	---
Sandoval	2.00	---	---	---	---	---
San Juan	---	---	62.50	---	---	---
Santa Fe	1.20	---	---	---	---	---
Taos	---	---	54.50	---	---	---
Valencia	2.40	---	118.00	101.00	---	---
Combined Counties	6.90	1.60	58.00	55.00	---	---
DISTRICT 30	3.10	3.10	84.00	88.50	---	---
Colfax	3.40	4.00	---	---	---	---
Curry	4.00	7.90	70.00	43.50	---	---
De Baca	1.30	1.30	---	142.00	---	---
Guadalupe	2.30	2.60	---	---	---	---
Harding	2.60	2.50	---	---	---	---
Mora	---	3.60	---	72.00	---	---
Quay	3.10	2.80	66.50	19.00	---	---
Roosevelt	2.60	3.20	85.00	45.00	---	---
San Miguel	---	1.00	---	---	---	---
Torrance	1.90	1.40	---	---	---	---
Union	3.10	4.40	---	110.00	---	---
Combined Counties	2.50	1.20	76.00	77.00	---	---
DISTRICT 70	1.30	1.00	102.00	102.00	---	---
Luna	---	---	117.00	118.00	---	---
Sierra	---	---	144.00	148.00	---	---
Socorro	1.30	---	107.00	139.00	---	---
Combined Counties	---	1.00	75.50	55.50	---	---
DISTRICT 90	2.10	1.60	159.00	174.00	---	---
Chaves	1.80	1.80	106.00	---	---	---
Doña Ana	---	---	195.00	221.00	---	---
Eddy	---	---	---	96.50	---	---
Lea	1.80	1.70	---	---	---	---
Lincoln	2.80	1.60	---	---	---	---
Combined Counties	2.20	1.60	98.50	102.00	---	---
STATE	2.40	2.20	118.00	116.00	16.00	16.00

Average Land Value per Acre: January 1, 2006-2010

	2006	2007	2008	2009	2010
Farm Real Estate	410	460	500	520	510
Irrigated Cropland	1,370	1,570	1,630	1,810	1,820
Non Irrigated Cropland	340	360	410	400	400
Pasture	250	280	310	280	290



LIVESTOCK

CATTLE AND CALVES

New Mexico's inventory of all cattle and calves as of January 1, 2010, was 1,550,000 head, an increase of 10,000 from 2009. Milk cow inventory decreased from 336,000 to 318,000 head. Dairy producers retained 145,000 heifers for replacement. Beef cow inventory increased 3.7 percent to 502,000 head. Ranchers held 95,000 heifers for beef cow replacement. The number of steers weighing 500 pounds or more decreased to 130,000 head. Bull inventory this year came in at 40,000 head. Calves on hand weighing less than 500 pounds, including both beef and dairy calves, totaled 230,000 head. The 2009 calf crop was estimated at 610,000 head. Gross income from cattle and calves totaled \$ 1,011 million in 2009, up slightly from the previous year.

RANGE AND PASTURE FEED 2009

The reporting of range and pasture conditions began in mid-march. Conditions were reported at 11 percent very poor; 34 percent poor; 38 percent fair; 16 percent good, and 1 percent excellent with conditions staying fairly consistent through the months of March and April. Ranchers were hauling water, calving, and supplemental feeding. Range conditions were excessively dry as little to no precipitation was seen. Winter temperatures returned during late April freezing any pasture grass. Soil moisture at mid-May was reported at only 11 percent leaving range and pasture conditions mostly poor and fair. Ranchers were continuing supplemental feeding and preparing to cull herds in the further absence of rain. Light rains were seen in late May and early June, but moisture was still mostly inadequate. Moisture began to increase during mid-June, greening up pastures slightly. July brought moderate rain but more was needed to reach adequate moisture percentages.

Ranchers continued hauling water and heavy supplemental feeding. August rains were significant, increasing soil moisture to mostly adequate and rangelands to mostly fair condition. September temperatures were still hot with no more rain, forcing ranchers to ship cattle off early. However, moisture rose again in late September to 50 percent adequate. As of early October, ranchers were preparing to market calves. Temperatures were finally starting to cool down and ranchers were contracting to buy winter feed.

DAIRY

Beginning inventory of milk cows was 318,000 head on January 1, 2010, down 5 percent from a year earlier. The average number during 2009 was 325,000. Milk production was up slightly from 7.87 billion pounds in 2008 to 7.90 billion pounds in 2009. Cash receipts from marketings decreased 24 percent from the previous year. New Mexico ended the year ranked ninth in the nation in milk production and ninth overall in the number of milk cows.

SHEEP AND LAMBS

Sheep and lamb inventory as of January 1, 2010, totaled 120,000 head, remaining constant with the 2009 inventory. The number of breeding sheep for 2010 was 105,000 head, an increase of 2,000 head from 2009. Market sheep and lambs decreased 2,000 head from the previous year to 15,000 head. The 2009 lamb crop increased 1,000 head from 2008 to 66,000 lambs. State level producer gross income dropped slightly from 5.6 million in 2008 to 5.5 million in 2009. In 2009 wool was sheared from 100,000 sheep and lambs, producing 730,000 pounds. The value of wool produced decreased to 730 thousand as the average price of wool dropped \$1.70 per pound to \$1.00 per pound.

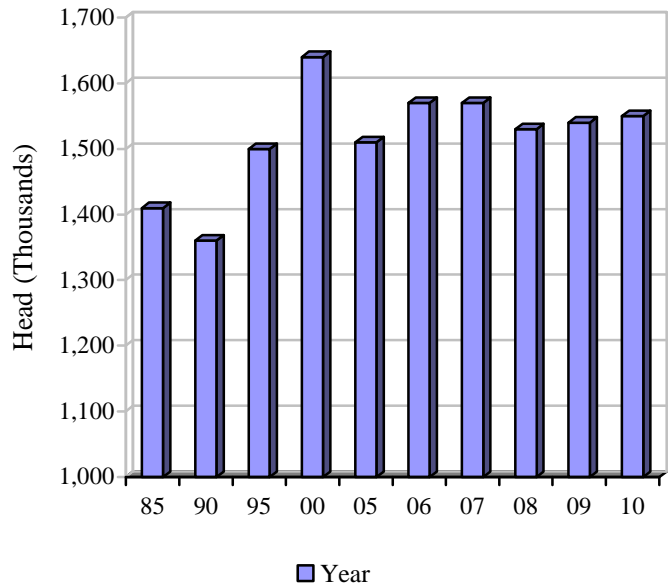
Cattle and Calves: Number and Value^{1/}

Year	Number	Value Per Head	Total Value
	1,000 <u>Head</u>	<u>Dollars</u>	1,000 <u>Dollars</u>
1985	1,410	350	493,500
1990	1,360	590	802,400
1995	1,500	650	975,000
2000	1,640	740	1,213,600
2005	1,510	1,090	1,645,900
2006	1,570	1,160	1,821,200
2007	1,570	1,060	1,664,200
2008	1,530	1,160	1,774,800
2009	1,540	970	1,493,800
2010	1,550	870	1,348,500

^{1/}As of January 1.

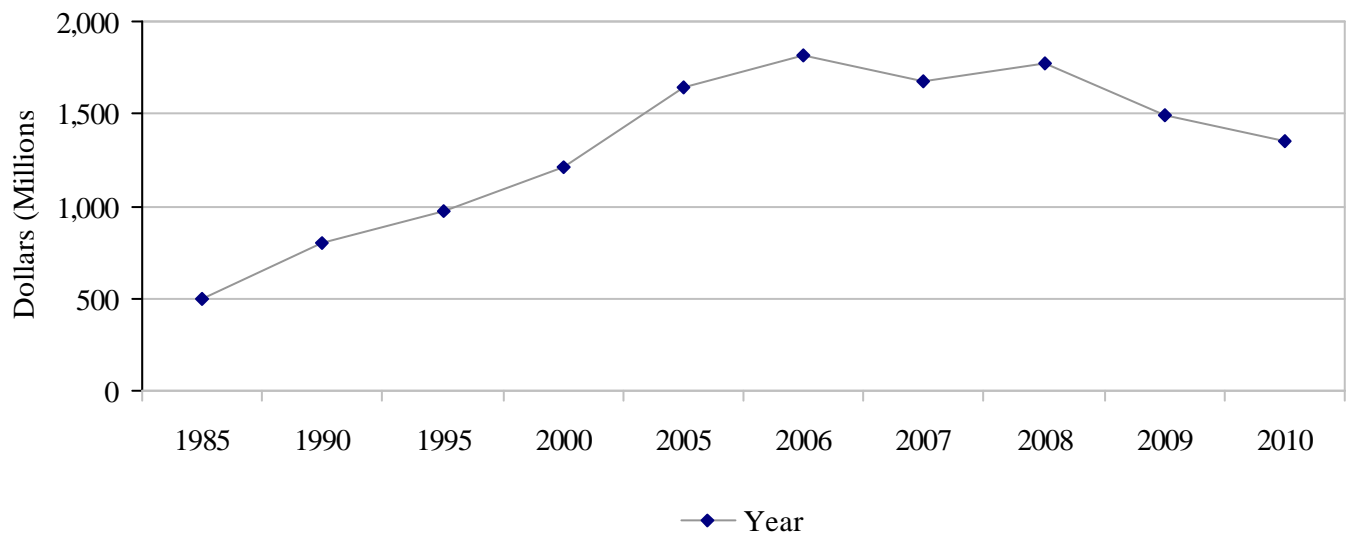
Cattle and Calves

New Mexico, January 1, 1985-2010



Cattle and Calves Inventory Value

New Mexico, January 1, 1985-2010

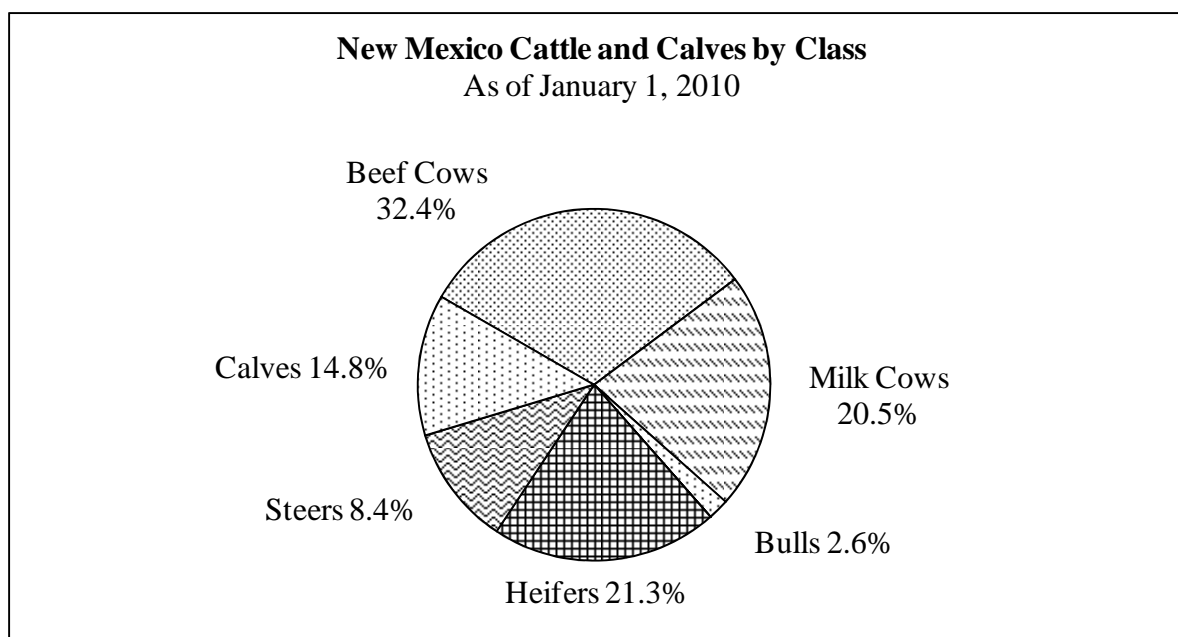


Cattle and Calves: Number by Class^{1/}

Year	Cows and Heifers That Have Calved				Bulls 500 Lbs. & Over	Heifers 500 Lbs. and Over			Total	Steers 500 Lbs. & Over	Calves Under 500 Lbs.
	All Cattle and Calves	All Cows	Beef Cows	Milk Cows		Beef Replace- ment	Milk Replace- ment	Other			
	-----1,000 Head-----										
1985	1,410	620	555	65	41	87	28	78	193	210	346
1990	1,360	660	589	71	40	101	19	60	180	220	260
1995	1,500	730	560	170	45	105	40	110	255	210	260
2000	1,640	800	564	236	50	100	55	135	290	200	300
2005	1,510	790	472	318	45	90	100	95	285	160	230
2006	1,570	820	480	340	40	90	105	105	300	190	220
2007	1,570	800	460	340	40	90	120	100	310	200	220
2008	1,530	850	520	330	40	90	120	90	300	160	180
2009 ^{2/}	1,540	820	484	336	30	85	140	95	320	170	200
2010	1,550	820	502	318	40	95	145	90	330	130	230

^{1/} As of January 1.

^{2/} Revised.



Cattle and Calves: Commercial Slaughter

	2005	2006	2007	2008	2009
Number (1,000 Head)	11.5	11.0	7.9	5.7	6.7
Average Live Weight (Pounds)	994	977	974	1,059	1,088
Total Live Weight (1,000 Pounds)	11,478	10,346	7,196	5,935	7,134

Cattle and Calves: Inventory, Supply, and Disposition

Year	All Cattle and Calves ^{1/}	Calf Crop	Inshipments	Marketings ^{2/}		Farm Slaughter ^{3/} Cattle & Calves	Deaths	
				Cattle	Calves		Cattle	Calves
-----1,000 Head-----								
1985	1,410	535	720	1,073	137	5	25	35
1990	1,360	520	860	1,079	260	3	19	39
1995	1,500	590	800	1,045	212	3	23	37
2000	1,640	630	1,010	1,333	300	3	26	38
2004	1,510	600	895	1,031	400	2	26	36
2005	1,510	600	865	952	390	2	26	35
2006	1,570	600	850	994	390	2	29	35
2007	1,570	580	910	1,067	390	2	34	37
2008	1,530	590	925	1,055	380	2	33	35
2009	1,540	610	1,000	1,145	390	2	28	35

^{1/} Includes cattle on feed in feedlots. Inventory as of January 1.

^{2/} Includes custom slaughter for use on farms where produced, but excludes interfarm sales within the state.

^{3/} Excludes custom slaughter for farmers at commercial establishments.

Cattle and Calves: Production, Price, and Income

Year	Production ^{1/}	Marketings ^{2/}	Price Per 100 Pounds		Value of Production	Cash Receipts ^{3/}	Value of Home Use	Gross Income
			Cattle	Calves				
-----1,000 Pounds-----		-----Dollars-----		-----1,000 Dollars-----				
1985	667,030	1,044,120	49.40	68.10	339,136	525,787	5,628	531,415
1990	587,530	1,068,800	68.00	96.80	429,827	756,736	5,924	762,660
1995	684,500	1,062,200	52.40	68.80	338,784	568,762	3,359	572,121
2000	722,280	1,307,480	67.80	101.00	450,935	919,339	4,388	923,727
2004	599,866	1,088,040	82.00	119.00	491,627	941,033	3,464	944,497
2005	616,326	1,035,840	87.00	131.00	544,291	956,093	3,817	959,910
2006	606,984	1,070,150	81.10	128.00	502,289	928,252	3,670	931,922
2007	627,203	1,139,500	80.40	120.00	513,195	967,123	3,510	970,633
2008	700,851	1,205,396	79.30	113.00	585,643	999,419	3,449	1,002,868
2009	774,218	1,323,706	72.90	105.00	594,541	1,007,546	3,398	1,010,944

^{1/} Adjustments made for changes in inventory and for inshipments.

^{2/} Excludes custom slaughter for use on farms where produced and interfarm sales within the state.

^{3/} Receipts from marketings and sale of farm slaughter.

Cattle and Calves: Number on Farms by County^{1/}

District/County	All Cattle		Beef Cows		Milk Cows		Other Cattle ^{2/}	
	----- Head -----							
	<u>2009</u>	<u>2010</u>	<u>2009</u>	<u>2010</u>	<u>2009</u>	<u>2010</u>	<u>2009</u>	<u>2010</u>
DISTRICT 10	153,000	157,000	91,000	92,000	11,000	10,000	51,000	55,000
Bernalillo	7,000	8,000	2,000	2,000	^{3/}	^{3/}	^{3/}	^{3/}
Cibola	16,000	15,000	12,000	11,000	---	---	4,000	4,000
McKinley	32,000	35,000	22,000	25,000	---	---	10,000	10,000
Rio Arriba	25,000	22,000	19,000	15,000	---	---	6,000	7,000
Sandoval	10,000	10,000	7,000	6,000	---	---	3,000	4,000
San Juan	22,000	23,000	13,000	16,000	---	---	9,000	7,000
Santa Fe	7,000	9,000	3,000	4,000	---	---	4,000	5,000
Taos	6,000	6,000	4,000	4,000	---	---	2,000	2,000
Valencia	28,000	29,000	9,000	9,000	^{3/}	^{3/}	^{3/}	^{3/}
Combined Counties	---	---	---	---	11,000	10,000	13,000	16,000
DISTRICT 30	751,000	746,000	200,000	209,000	134,000	144,000	417,000	393,000
Colfax	35,000	32,000	20,000	18,000	---	---	15,000	14,000
Curry	232,000	238,000	15,000	15,000	80,000	87,000	137,000	136,000
De Baca	26,000	31,000	12,000	16,000	---	---	14,000	15,000
Guadalupe	27,000	30,000	17,000	19,000	---	---	10,000	11,000
Harding	28,000	24,000	15,000	15,000	---	---	13,000	9,000
Mora	17,000	16,000	10,000	9,000	---	---	7,000	7,000
Quay	43,000	44,000	23,000	24,000	---	---	20,000	20,000
Roosevelt	134,000	142,000	14,000	18,000	^{3/}	^{3/}	^{3/}	^{3/}
San Miguel	43,000	38,000	23,000	21,000	---	---	20,000	17,000
Torrance	38,000	44,000	21,000	22,000	^{3/}	^{3/}	^{3/}	^{3/}
Union	128,000	107,000	30,000	32,000	---	---	98,000	75,000
Combined Counties	---	---	---	---	54,000	57,000	83,000	89,000
DISTRICT 70	169,000	176,000	80,000	84,000	19,000	17,000	70,000	75,000
Catron	26,000	27,000	17,000	16,000	---	---	9,000	11,000
Grant	28,000	29,000	14,000	17,000	---	---	14,000	12,000
Hidalgo	22,000	19,000	13,000	14,000	---	---	9,000	5,000
Luna	26,000	30,000	10,000	12,000	^{3/}	^{3/}	^{3/}	^{3/}
Sierra	25,000	25,000	11,000	11,000	^{3/}	^{3/}	^{3/}	^{3/}
Socorro	42,000	46,000	15,000	14,000	11,000	11,000	16,000	21,000
Combined Counties	---	---	---	---	8,000	6,000	22,000	26,000
DISTRICT 90	467,000	471,000	113,000	117,000	172,000	147,000	182,000	207,000
Chaves	200,000	180,000	28,000	29,000	94,000	82,000	78,000	69,000
Doña Ana	100,000	107,000	10,000	12,000	47,000	40,000	43,000	55,000
Eddy	46,000	46,000	15,000	17,000	11,000	6,000	20,000	23,000
Lea	75,000	82,000	29,000	31,000	20,000	19,000	26,000	32,000
Lincoln	30,000	36,000	21,000	18,000	---	---	9,000	18,000
Otero	16,000	20,000	10,000	10,000	---	---	6,000	10,000
STATE	1,540,000	1,550,000	484,000	502,000	336,000	318,000	720,000	730,000

^{1/}As of January 1.

^{2/}Includes cattle on feed.

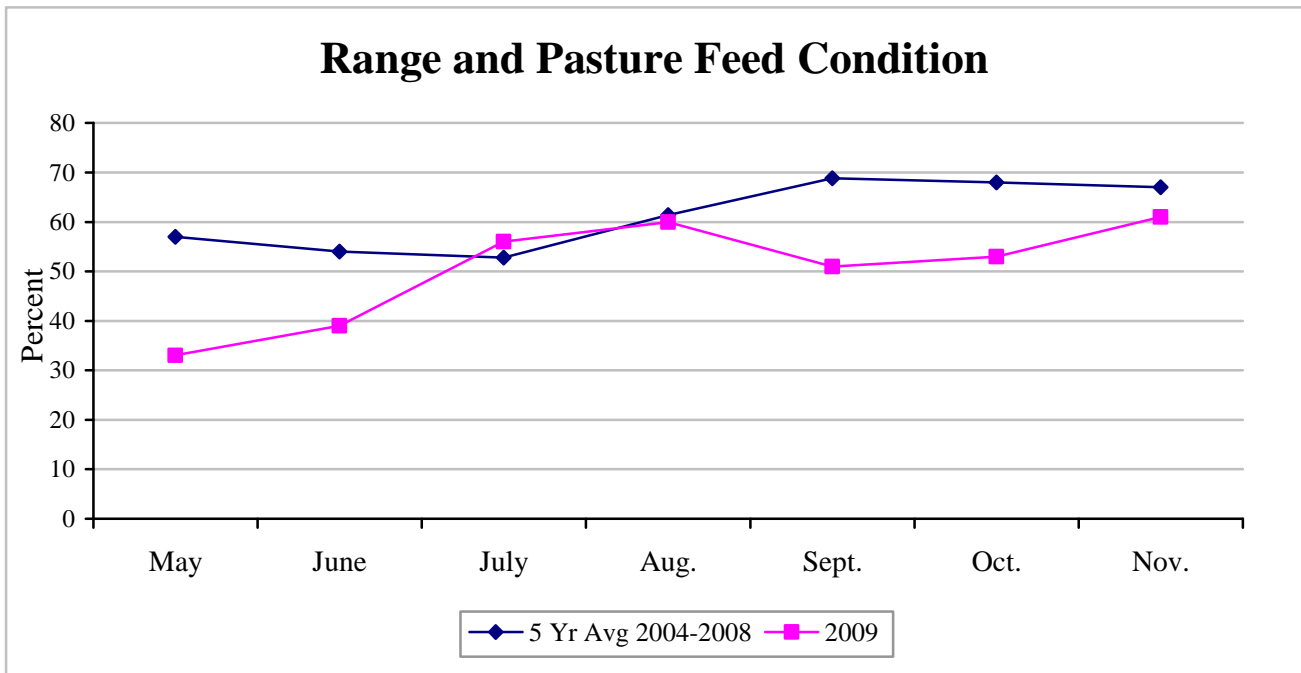
^{3/}To avoid disclosure, published in combined counties.

Cattle and Calves: Number on Feed by District^{1/}

District	2004	2005	2006	2007	2008	2009	2010
DISTRICT 30	100,000	115,000	134,000	126,000	156,000	156,800	^{3/}
OTHER DISTRICTS	15,000	11,000	9,000	10,000	4,000	8,200	60,000
STATE	115,000	126,000	143,000	136,000	160,000	165,000	60,000

^{1/}Includes only those animals on full feed for the slaughter market as of January 1.

^{3/}To avoid disclosure, published in combined districts.



Range and Pasture Feed Condition^{1/}

Year	May	June	July	August	September	October	November
-----Percent-----							
1995	37	49	49	56	52	62	60
2000	47	53	54	49	41	28	33
2004	56	45	49	62	78	84	80
2005	89	84	67	72	79	78	68
2006	36	20	31	68	83	83	95
2007	73	87	85	82	80	74	73
2008	23	33	43	84	86	68	81
2009	33	39	56	60	51	53	61

^{1/} Represents the percentage of range and pasture feed rated fair or better.

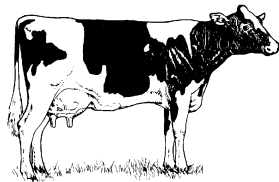
Milk: Production, Disposition, Price, and Income

Year	Milk Cows on Farms ^{1/}	Milk Production Per Cow	Total Milk Production	Used on Farms	Whole Milk	Price Per 100 Pounds	Cash Receipts from Marketings	Gross Producer Income ^{2/}
	1,000 Head	Pounds	-----Million Pounds-----			Dollars	----1,000 Dollars----	
1980	45	13,378	602	14	588	14.10	84,280	85,570
1985	67	16,090	1,078	12	1,066	13.10	142,904	143,708
1990	81	18,815	1,524	13	1,511	13.40	202,474	203,412
1995	191	18,969	3,623	17	3,606	11.70	430,803	431,759
2000	250	20,944	5,236	44	5,192	12.40	643,808	645,544
2005	328	21,192	6,951	88	6,863	14.30	981,409	984,555
2006	348	21,853	7,605	91	7,514	12.10	909,194	911,614
2007 ^{3/}	332	21,958	7,290	89	7,201	18.80	1,353,788	1,357,360
2008	338	23,269	7,865	75	7,790	17.50	1,363,250	1,365,525
2009	325	24,320	7,904	51	7,853	12.10	950,213	950,818

^{1/}Average number during year.

^{2/}Cash Receipts from marketing of milk and cream plus value of milk used for home consumption.

^{3/}Revised.

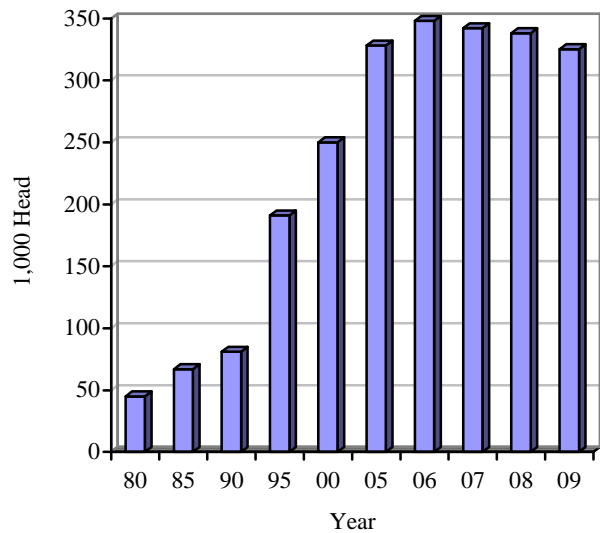


2009 Milk Prices Received

Month	\$/Cwt.
January	13.20
February	11.00
March	10.90
April	11.20
May	10.70
June	10.30
July	10.50
August	11.40
September	12.40
October	13.50
November	14.90
December	15.60

Milk Cows on Farms

New Mexico 1980-2008



2009 Milk Production by County

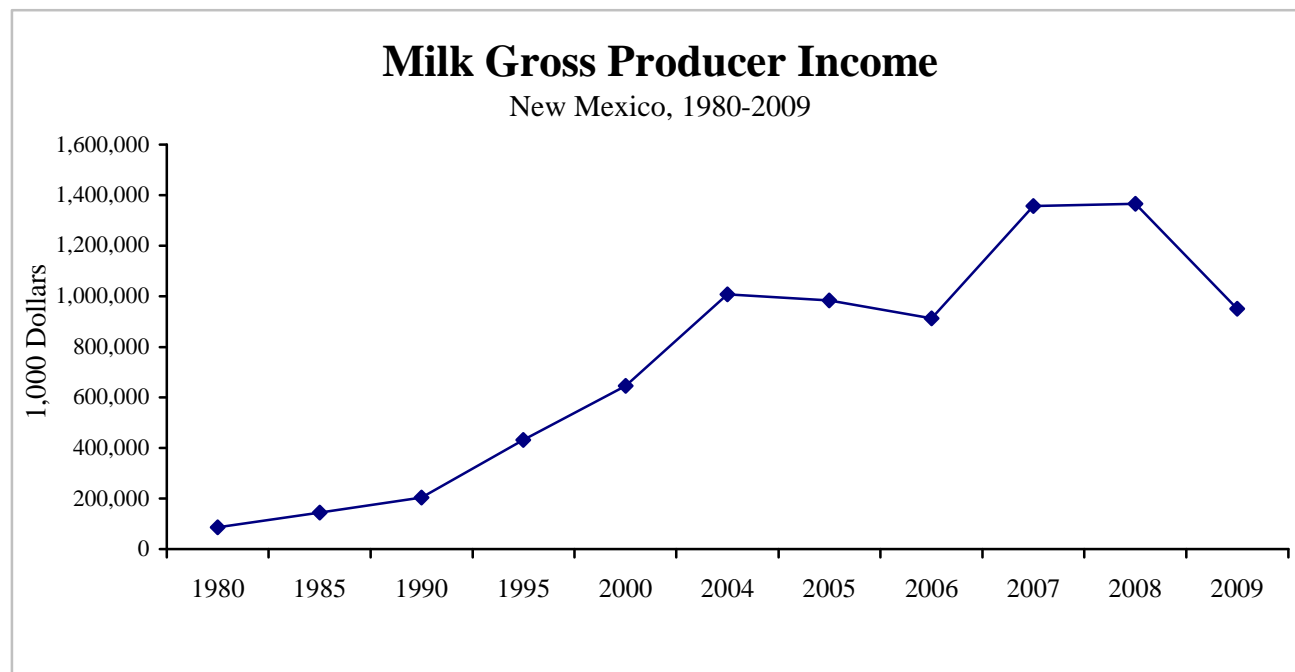
District/County	Milk Cows ^{1/}		Milk Production Per Cow		Total Milk Production	
			-----Pounds-----		-----1,000 Lbs-----	
	<u>2008^{2/}</u>	<u>2009</u>	<u>2008</u>	<u>2009</u>	<u>2008</u>	<u>2009</u>
DISTRICT 10	13,000	11,000	20,800	22,700	270,000	250,000
DISTRICT 30	134,000	133,000	23,800	26,000	3,193,000	3,454,000
Curry	69,000	73,000	24,200	25,400	1,670,000	1,854,000
Combined Counties	65,000	60,000	23,400	26,700	1,523,000	1,600,000
DISTRICT 70	18,000	16,000	17,700	18,800	319,000	300,000
DISTRICT 90	173,000	165,000	23,600	23,600	4,083,000	3,900,000
Chaves	85,000	86,000	23,900	23,300	2,033,000	2,000,000
Doña Ana	53,000	47,000	22,600	23,400	1,200,000	1,100,000
Eddy	15,000	11,000	23,300	22,700	350,000	250,000
Lea	20,000	21,000	25,000	26,200	500,000	550,000
STATE	338,000	325,000	23,269	24,320	7,865,000	7,904,000

^{1/}Average number of cows on farms during year, excluding heifers not yet fresh.

^{2/}Revised.

2009 Monthly Milk Production

	Jan	Feb	Mar	Apr	May	June	July	Aug	Sept	Oct	Nov	Dec
Cows (1,000) (Average)	334	333	333	332	332	327	321	320	318	317	317	318
Milk Per Cow (Lbs.)	2,015	1,880	2,110	2,070	2,145	2,050	2,050	2,000	1,980	2,020	1,970	2,015
Production (Million Lbs.)	673	626	703	687	712	670	658	640	630	640	624	641



Sheep and Lambs: Number and Value^{1/}

Year	Number <u>1,000 Head</u>	Value Per Head <u>Dollars</u>	Total Value <u>1,000 Dollars</u>
1985	538	55	29,590
1990	495	78	38,610
1995	365	70	25,550
2000	250	89	22,250
2005	145	119	17,255
2006	155	133	20,615
2007	130	125	16,250
2008	130	131	17,030
2009	120	124	14,880
2010	120	123	14,760

^{1/}As of January 1.



Sheep and Lambs: Commercial Slaughter

	2004	2005	2006	2007	2008	2009
Number (1,000 Head)	21.5	14.8	8.9	12.2	15.1	13.5
Average Live Weight (Pounds)	135	120	125	137	140	141
Total Live Weight (1,000 Pounds)	2,914	1,769	1,109	1,678	1,973	1,900

Sheep and Lambs: Number on Farms by Class^{1/}

Year	Total Sheep & Lambs	Breeding Sheep & Lambs			Market Sheep & Lambs	
		Ewes	Rams	Lambs	Lambs	Sheep
-----1,000 Head-----						
1985	538	391	19	76	---	52
1990	495	373	21	79	---	22
1995	365	250	15	50	47	3
2000	250	170	10	25	43	2
2005	145	97	6	17	23	2
2006	155	102	6	22	23	2
2007	130	90	5	15	18	2
2008	130	89	6	17	16	2
2009	120	83	5	15	14	3
2010	120	84	5	16	13	2

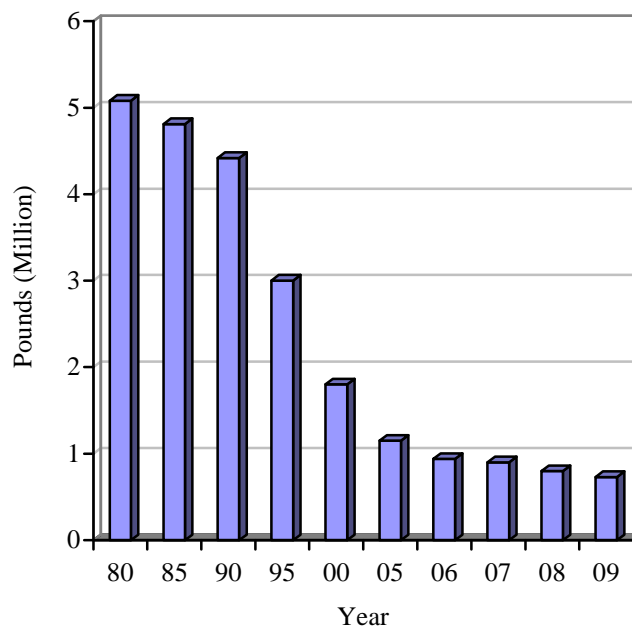
^{1/} As of January 1.

Wool: Production and Value

Year	Sheep Shorn	Average Weight of Fleece	Production	Price Per Pound	Value
	1,000 Head	Pounds	1,000 Pound	Dollars	1,000 Dollars
1980	555	9.2	5,080	0.90	4,572
1985	522	9.2	4,819	0.72	3,470
1990	453	9.8	4,422	1.07	4,732
1995	340	8.8	3,000	1.17	3,510
2000	195	9.2	1,800	0.65	1,170
2005	155	7.4	1,150	1.20	1,380
2006	125	7.5	940	0.90	846
2007	120	7.5	900	1.40	1,260
2008	105	7.6	800	1.70	1,360
2009	100	7.3	730	1.00	730

Wool Production

New Mexico 1980-2009



Sheep and Lambs: Inventory, Supply, and Disposition

Year	Total Sheep & Lambs ^{1/} -----1,000 Head-----	Lamb Crop		Inshipments	Marketings ^{2/}		Farm Slaughter ^{3/}	Deaths	
		Number	As % of Ewes 1 Yr. & Older Percent	Sheep & Lambs	Sheep	Lambs	Sheep & Lambs	Sheep	Lambs
1980	660	356	76	132	106	220	30	74	68
1985	538	325	83	44	99	172	23	38	50
1990	495	260	70	37	97	138	25	35	35
1995	365	200	80	7	83	143	9	10	12
2000	250	140	82	10	55	114	8	11	12
2005	145	83	86	11	12	55	4	6	7
2006	155	73	72	7	30	57	6	6	6
2007	130	74	82	10	15	55	4	5	5
2008	130	65	73	11	18	50	6	8	4
2009	120	66	80	10	10	45	6	10	5

^{1/} Includes sheep on feed. Inventory as of January 1. Beginning in 1995, new crop lambs included in Total Sheep & Lambs.

^{2/} Includes custom slaughter for use on farms where produced, but excludes interfarm sales within the state.

^{3/} Excludes custom slaughter for farmers at commercial establishments.

Sheep and Lambs: Production, Price, and Income

Year	Production ^{1/} -----1,000 Pounds-----	Marketings ^{2/}	Price Per Cwt.		Value of Production	Cash Receipts ^{3/}	Value of Home Use	Gross Income
			Sheep	Lambs				
1980	17,886	29,506	22.60	61.90	9,984	13,514	1,166	14,680
1985	21,577	25,090	28.00	68.80	13,406	13,341	1,396	14,737
1990	17,495	21,170	26.40	50.20	7,781	8,545	1,454	9,999
1995	16,479	21,270	28.00	77.20	10,739	12,288	779	13,067
2000	10,551	15,660	41.00	79.70	7,958	10,391	871	11,262
2005	6,798	5,670	51.00	108.00	6,441	5,713	748	6,461
2006	5,925	7,890	38.00	92.00	4,410	5,768	720	6,488
2007	6,295	6,270	36.00	98.00	5,267	5,326	528	5,854
2008	5,286	6,060	30.00	99.00	4,432	4,923	643	5,566
2009	5,051	5,010	34.00	109.00	5,099	4,741	773	5,514

^{1/} Adjustments made for changes in inventory and for inshipments.

^{2/} Excludes custom slaughter for use on farms where produced and interfarm sales within the state.

^{3/} Receipts from marketings and sale of farm slaughter.

Sheep and Lambs: Number on Farms by County^{1/}

District/County	2008	2009	2010
DISTRICT 10	71,600	66,500	66,000
Bernalillo	500	^{2/}	^{2/}
Cibola	5,000	5,000	5,000
McKinley	42,000	39,000	38,000
Rio Arriba	5,000	4,600	4,500
San Juan	13,600	13,000	13,500
Taos	700	^{2/}	^{2/}
Valencia	1,200	1,000	1,000
Other Counties	3,600	3,900	4,000
DISTRICT 30	15,500	14,400	14,700
De Baca	^{2/}	800	800
Guadalupe	3,600	3,200	3,500
Mora	500	^{2/}	500
Quay	1,100	1,100	1,000
Roosevelt	400	^{2/}	^{2/}
Torrance	7,100	7,000	6,000
Other Counties	2,800	2,300	2,900
DISTRICT 70	1,600	1,100	1,200
Socorro	800	600	500
Other Counties	800	500	700
DISTRICT 90	41,300	38,000	38,100
Chaves	17,100	17,000	17,500
Doña Ana	800	800	800
Eddy	2,300	1,800	1,500
Lea	2,400	2,000	1,900
Lincoln	13,200	11,000	11,000
Otero	5,500	5,400	5,400
STATE	130,000	120,000	120,000

^{1/} As of January 1.

^{2/} Included in Other Counties.

Hogs and Pigs: Inventory, Supply, and Disposition

Year	Pig Crop: December ^{1/} - November							Deaths
	Total Hogs	Sows Farrowed	Pigs Per Litter	Pigs Saved	Inshipments	Marketings ^{2/}	Farm Slaughter	
	-----1,000 Head-----		<u>Number</u>			-----1,000 Head-----		
1980	74.0	15.0	7.33	110.0	4.0	81.0	4.0	7.0
1985	38.0	8.4	7.50	63.0	2.0	56.0	2.0	4.0
1990	27.0	5.6	7.64	42.8	2.2	39.0	1.0	3.0
1995	5.0	2.0	6.75	27.0	4.0	49.0	1.0	1.0
2000	3.0	0.6	7.25	5.80	3.0	10.7	1.0	0.1
2005	2.0	0.4	8.50	3.40	1.0	4.1	0.5	0.3
2006	2.0	0.4	8.50	3.40	1.0	3.6	0.5	0.3
2007	2.0	0.4	8.00	3.20	0.6	3.0	0.5	0.3
2008	2.0	0.5	8.00	3.20	0.8	3.1	0.6	0.3
2009	1.5	0.4	8.00	3.20	0.4	3.1	0.7	0.3

^{1/} December previous year.

^{2/} Includes custom slaughter for use on farms where produced, but excludes interfarm sales within the state.

Hogs and Pigs: Production, Price, and Income

Year	Production	Marketings ^{1/}	Price Per Cwt.	Value of Production	Cash Receipts ^{2/}	Value of Home Use	Gross Income
	--1,000 Pounds Live Weight--		<u>Dollars</u>		-----1,000 Dollars-----		
1980	20,334	17,367	39.10	7,951	6,864	437	7,301
1985	12,994	11,858	45.50	5,959	5,482	501	5,983
1990	8,441	7,831	50.70	4,298	4,059	190	4,249
1995	7,595	9,925	40.90	3,074	4,165	172	4,337
2000	1,211	1,658	37.60	408	687	158	845
2005	1,143	1,080	47.50	521	513	142	655
2006	771	649	42.00	316	279	112	391
2007	678	518	40.80	272	215	101	316
2008	762	575	40.30	300	235	113	348
2009	780	524	34.80	267	186	124	310

^{1/} Excludes custom slaughter for use on farms where produced and interfarm sales within the state.

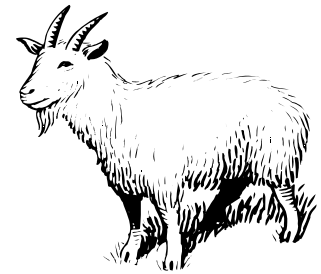
^{2/} Receipts from marketings and sale of farm slaughter.

Goats: Inventory

	1995	2000	2005	2007	2008	2009 ^{2/}	2010
Angora (1,000 Head)	85.0	30.0	15.0	13.7	13.6	12.5	10.5
Milk (1,000 Head) ^{1/}	---	---	4.5	3.0	3.0	2.0	3.1
Meat & Other (1,000 Head) ^{1/}	---	---	13.0	17.0	18.0	18.0	21.0

^{1/} Not estimated prior to 2005.

^{2/} Revised.



Mohair: Production, Price, and Value

Year	Goats Clipped	Average Clip Per Goat	Production	Price Per Pound	Value of Production
	<u>1,000 Head</u>	<u>Pounds</u>	<u>1,000 Pounds</u>	<u>Dollars</u>	<u>1,000 Dollars</u>
1995	79	4.0	316	1.66	525
2000	35	5.5	138	1.90	262
2005	15	5.8	87	3.25	283
2006	14.5	5.9	85	4.00	340
2007	13.5	5.9	80	4.50	360
2008	12.5	6.1	76	4.00	304
2009	11.5	6.5	75	2.50	188

FIELD CROPS

HAY

All harvested hay totaled 320,000 acres in 2009, down from 340,000 acres in 2008. Yield for all hay totaled 4.33 tons an acre for a total production of 1.38 million tons. The average price for all hay was \$152 per ton. Harvested alfalfa acreage decreased to 240,000 acres from the previous year's total of 250,000 acres. Yield per acre was 5.10 tons for a total production of 1.2 million tons. The price of alfalfa hay averaged \$154 per ton.

SORGHUM

New Mexico's sorghum acreage harvested for grain decreased to 50,000 in 2009 compared to 80,000 acres harvested the previous year. Yields averaged 46 bushels per acre for a total production of 2.3 million bushels compared to 3.4 million bushels produced a year earlier. The average price decreased to \$3.19 per bushel. Total value of production was \$7.3 million, decreasing from \$12.0 million in 2008. There was a total of 18,000 acres harvested for silage with an average yield of 16 tons per acre, which produced 288,000 tons.

CORN

Corn for grain production decreased from 9.9 million bushels in 2008 to 9.25 million bushels in 2009. Yields were 185 bushels per acre; harvested acres decreased by 5,000 acres to 50,000. The 2009 price per bushel averaged \$4.00 for a total value of production of \$37 million. Acres harvested for silage decreased 5,000 acres to 78,000. Yield was up slightly from last year to 27 tons per acre for a total production of 2.1 million tons.

WHEAT

Winter wheat production in the state for 2009 was 3.5 million bushels, down from 4.2 million in 2008. Harvested acreage remained the same from 2008 to 2009 at 140,000 acres. The average yield was 25 bushels per acre. The value of production was \$16 million with an average price of \$4.70 per bushel.

PEANUTS

Peanut harvested acreage decreased by 1,000 acres from the previous year to 7,000 acres in 2009. Yields were slightly lower in 2009 with 3,100 pounds per acre. Production was 21.7 million pounds. Crop value rose from \$6.2 million in 2008 to \$7.1 million in 2009 with the average price at \$0.33 per pound.

COTTON

Upland cotton producers harvested 29,500 acres in 2009 compared to 35,000 in 2008. Yields were higher in 2009 coming in at 1,172 pounds per acre. Total production for the year was estimated at 72,000 bales. Price per pound averaged \$0.63 with total value of production at \$15 million. American-Pima harvested acres totaled 2,800, an increase of 900 acres from the 2008 total of 1,900 acres. Yields for the year averaged 686 pounds per acre with total production coming in at 4,000 bales. Price per pound was \$1.10, with total value of production at 2.3 million dollars.

Acreage and Value of Principal Field Crops

Commodity	Year	Unit	Harvested Acres	Yield Per Acre	Production	Season Avg. Price	Value of Production
GENERAL CROPS			<u>1,000 Acres</u>	<u>Units</u>	<u>1,000 Units</u>	<u>Dollars</u>	<u>1,000 Dollars</u>
Corn for Grain	2008	Bu.	55.0	180	9,900	5.30	52,470
	2009	Bu.	50.0	185	9,250	4.00	37,000
Corn for Silage	2008	Tons	83.0	25	2,075	34.00	70,550
	2009	Tons	78.0	27	2,106	33.00	69,498
Wheat for Grain	2008	Bu.	140.0	30	4,200	7.70	32,340
	2009	Bu.	140.0	25	3,500	4.70	16,450
Dry Beans ^{1/}	2008	Cwt.	9.3	23.0	214	50.00	10,700
	2009	Cwt.	12.4	22.2	275	45.00	12,375
Sorghum Grain	2008	Bu.	80.0	43	3,440	3.50	12,040
	2009	Bu.	50.0	46	2,300	3.19	7,342
Sorghum Silage	2008	Tons	25.0	16	400	29.00	11,600
	2009	Tons	18.0	16	288	28.00	8,064
Upland Cotton ^{2/}	2008	Lbs.	35.0	974	71	.49	16,699
	2009	Lbs.	29.5	1,172	72	.63	15,120
American-Pima Cotton ^{2/}	2008	Lbs.	1.9	758	3.0	^{6/}	^{6/}
	2009	Lbs.	2.8	686	4.0	1.10	2,270
Cottonseed ^{3/}	2008	Tons	---	---	25.0	289	7,225
	2009	Tons	---	---	25.4	180	3,420
Potatoes	2008	Cwt.	5.9	390	2,301	6.60	15,187
	2009	Cwt.	6.4	400	2,560	6.35	16,256
Peanuts ^{3/}	2008	Lbs.	8.0	3,200	25,600	.242	6,195
	2009	Lbs.	7.0	3,100	21,700	.328	7,118
Chile ^{4/}	2008	Tons	11.1	5.4	60,140	704	42,310
	2009	Tons	12.3	5.9	72,700	789	57,370
Onions	2008	Cwt.	6.6	500	3,300	14.40	47,520
	2009	Cwt.	5.0	550	2,750	19.60	53,900
Pecans	2008	Lbs.	---	---	43,000	1.45	62,350
	2009	Lbs.	---	---	68,000	1.76	119,680
HAY CROPS							
All Hay ^{5/}	2008	Tons	340.0	4.46	1,516	186	281,976
	2009	Tons	320.0	4.33	1,384	152	210,368
Alfalfa Hay	2008	Tons	250.0	5.20	1,300	190	247,000
	2009	Tons	240.0	5.10	1,224	154	188,496
All Other Hay	2008	Tons	90.0	2.40	216	155	33,480
	2009	Tons	80.0	2.00	160	126	20,160

^{1/} Production in cwt., season average price in dollars per cwt.

^{2/} Production in 480 pound net weight bales.

^{3/} 2009 value of production is preliminary.

^{4/} Production includes both wet and dry tonnage combined.

^{5/} Value of production may not equal production times season average price.

^{6/} Value not published to avoid disclosure of individual operations.

Wheat: Acreage, Yield, and Production by County^{1/}

2008 District/County	Planted All Purposes			Harvested for Grain								
	-----Acres-----			-----Acres-----			Yield Per Acre			--Production (1,000 Bu.)--		
	Irrig	Non-Irrig	Total	Irrig	Non-Irrig	Total	Irrig	Non-Irrig	Total	Irrig	Non-Irrig	Total
DISTRICT 30	1/	1/	399,000	1/	1/	129,000	1/	1/	26.0	1/	1/	3,340.0
Curry	1/	1/	180,200	1/	1/	61,000	1/	1/	26.5	1/	1/	1,622.5
Torrance	1/	1/	2,000	1/	1/	1,000	1/	1/	26.0	1/	1/	26.0
Other Counties	1/	1/	216,800	1/	1/	67,000	1/	1/	25.0	1/	1/	1,691.5
DISTRICT 70	1/	1/	2,500	1/	1/	---	1/	1/	---	1/	1/	---
DISTRICTS 10 & 90	1/	1/	28,500	1/	1/	11,000	1/	1/	37.4	1/	1/	860.0
STATE	150,000	280,000	430,000	66,000	74,000	140,000	53.0	9.5	30.0	3,500.0	700.0	4,200.0

^{1/} Irrigated and Non-Irrigated data at the county level not available due to insufficient reporting.

Wheat: Acreage, Yield, and Production by County^{1/}

2009 District/County	Planted All Purposes			Harvested for Grain								
	-----Acres-----			-----Acres-----			Yield Per Acre (Bu.)			--Production (1,000 Bu.)--		
	Irrig	Non-Irrig	Total	Irrig	Non-Irrig	Total	Irrig	Non-Irrig	Total	Irrig	Non-Irrig	Total
DISTRICT 10	1/	1/	6,800	5,000	---	5,000	101.0	---	101.0	505.0	---	505.0
San Juan	1/	1/	5,200	5,000	---	5,000	101.0	---	101.0	505.0	---	505.0
Combined Counties	1/	1/	1,600	---	---	---	---	---	---	---	---	---
DISTRICT 30	118,000	299,000	417,000	35,000	98,000	133,000	48.0	12.0	21.5	1,675.0	1,200.0	2,875.0
Curry	46,500	145,500	192,000	18,000	51,000	69,000	50.5	9.5	20.0	906.0	491.0	1,397.0
Quay	5,200	74,800	80,000	4,000	25,500	29,500	40.0	17.5	20.5	160.0	445.0	605.0
Roosevelt	^{2/}	^{2/}	116,700	^{2/}	^{2/}	24,500	^{2/}	^{2/}	19.5	^{2/}	^{2/}	480.0
Combined Counties	66,300	78,700	28,300	13,000	21,500	10,000	47.0	12.5	39.5	609.0	264.0	393.0
DISTRICT 70	1/	1/	1,100	---	---	---	---	---	---	---	---	---
Luna	1/	1/	600	---	---	---	---	---	---	---	---	---
Combined Counties	1/	1/	500	---	---	---	---	---	---	---	---	---
DISTRICT 90	1/	1/	25,100	2,000	---	2,000	60.0	---	60.0	120.0	---	120.0
Chaves	1/	1/	2,800	---	---	---	---	---	---	---	---	---
Eddy	1/	1/	1,700	---	---	---	---	---	---	---	---	---
Lea	1/	1/	17,600	2,000	---	2,000	60.0	---	60.0	120.0	---	120.0
Combined Counties	1/	1/	3,000	---	---	---	---	---	---	---	---	---
STATE	149,500	300,500	450,000	42,000	98,000	140,000	55.0	12.0	25.0	2,300.0	1,200.0	3,500.0

^{1/} To avoid disclosure, published only total.

^{2/} To avoid disclosure, published in combined counties.

All Hay: Acreage, Production, Price, Value, and Stocks^{1/}

Crop Year	Acreage Harvested <u>1,000 Acres</u>	Yield Per Acre <u>Tons</u>	Production <u>1,000 Tons</u>	Price Per Ton <u>Dollars</u>	Value of Production ^{2/} <u>1,000 Dollars</u>	On Farm Stocks	
						Dec 1	May 1
						<u>1,000 Tons</u>	
1980	310	3.69	1,144	86.50	98,956	456	108
1985	340	4.38	1,488	80.00	119,040	432	119
1990	320	4.30	1,376	111.00	153,840	482	80
1995	345	4.17	1,440	114.00	162,575	600	50
2000	390	4.33	1,688	122.00	205,352	608	185
2005	330	4.28	1,413	125.00	176,328	545	164
2006	320	4.07	1,302	164.00	211,092	470	133
2007	350	4.32	1,512	164.00	244,584	580	105
2008 ^{3/}	340	4.46	1,516	189.00	280,480	600	125
2009	320	4.33	1,384	152.00	208,656	570	105

^{1/} Dry hay only. Excludes silage and green chop.

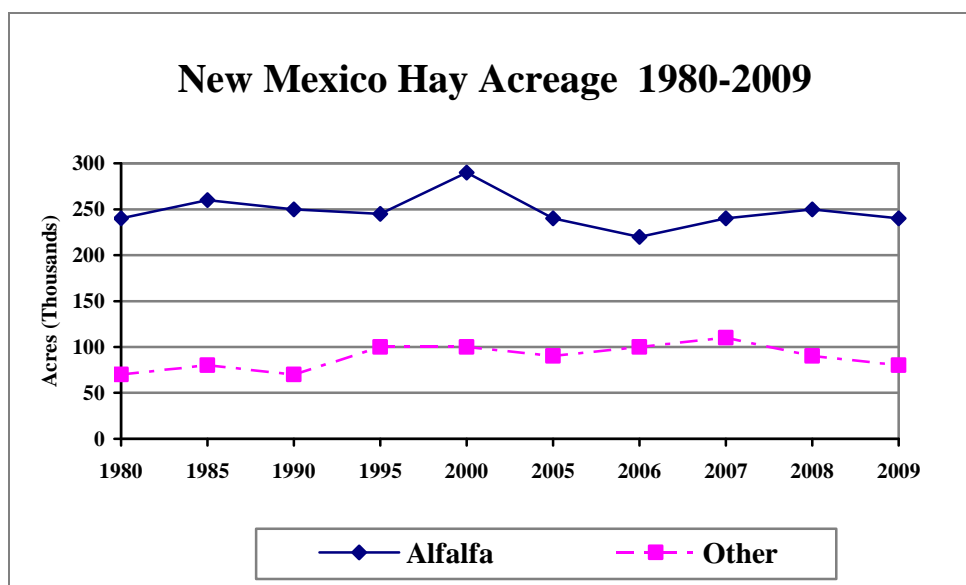
^{2/} Sum of Alfalfa and All Other Hay; value may not equal production times price.

^{3/} Revised.

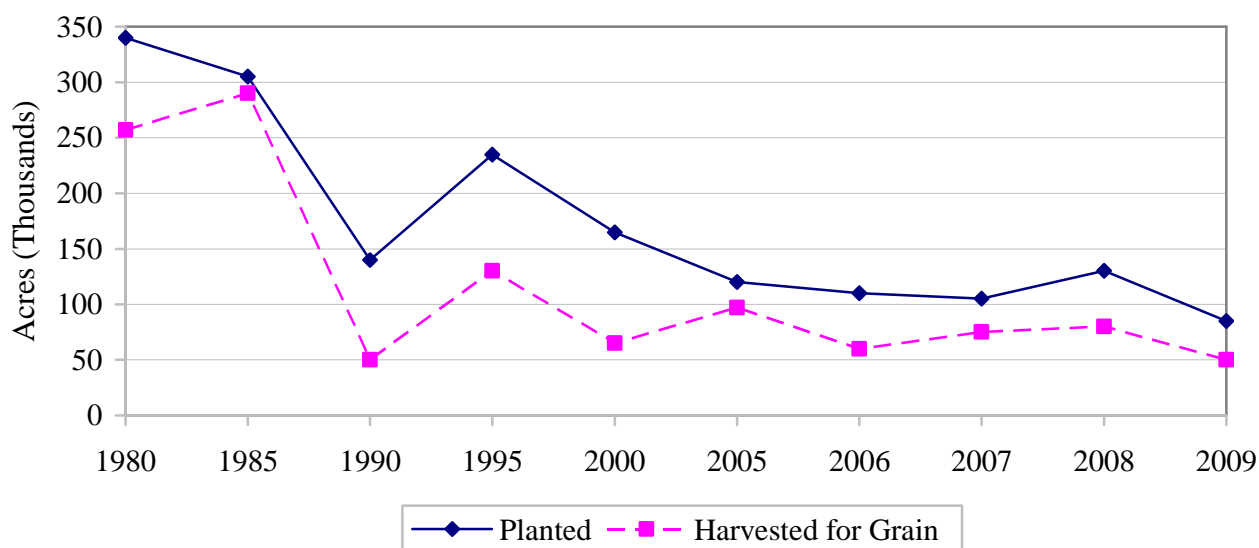
Alfalfa and Other Hay: Acreage, Yield, and Production^{1/}

Year	-----Alfalfa Hay-----			-----All Other Hay-----		
	Acreage Harvested <u>1,000 Acres</u>	Yield Per Acre <u>Tons</u>	Production <u>1,000 Tons</u>	Acreage Harvested <u>1,000 Acres</u>	Yield Per Acre <u>Tons</u>	Production <u>1,000 Tons</u>
1980	240	4.30	1,032	70	1.60	112
1985	260	5.20	1,352	80	1.70	136
1990	250	5.00	1,250	70	1.80	126
1995	245	5.10	1,250	100	1.90	190
2000	290	5.20	1,508	100	1.80	180
2005	240	5.10	1,224	90	2.10	189
2006	220	5.10	1,122	100	1.80	180
2007	240	5.20	1,248	110	2.40	264
2008	250	5.20	1,300	90	2.40	216
2009	240	5.10	1,224	80	2.00	160

^{1/} Dry hay only. Excludes silage and green chop.



New Mexico Sorghum Acreage 1980-2009

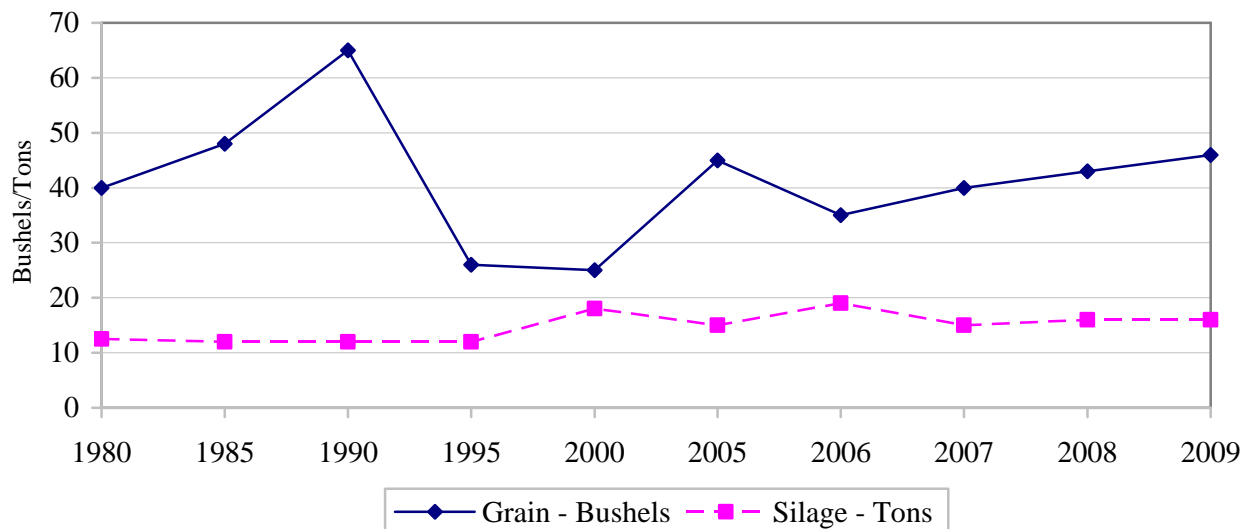


Sorghum: Acreage, Production, Price, and Value

Crop Year	Planted for all Purposes	Harvested for Grain					Harvested for Silage		
		Acreage	Yield	Production	Price Per Bushel	Value of Production	Acreage	Yield	Production
	1,000 Acres	1,000 Acres	1,000 Bushels	1,000 Bushels	Dollars	1,000 Dollars	1,000 Acres	1,000 Tons	1,000 Tons
1980	340	257	40.0	10,280	3.42	35,260	11	12.5	138
1985	305	290	48.0	13,920	2.34	32,573	1	12.0	12
1990	140	50	65.0	3,250	2.38	7,735	3	12.0	36
1995	235	130	26.0	3,380	3.23	10,917	8	12.0	96
2000	165	65	25.0	1,625	2.20	3,576	8	18.0	144
2005	120	97	45.0	4,365	2.10	9,167	14	15.0	210
2006	110	60	35.0	2,100	3.16	6,644	17	17.0	289
2007	105	75	40.0	3,000	4.06	12,180	20	15.0	300
2008 ^{1/}	130	80	43.0	3,440	3.50	12,040	25	16.0	400
2009	85	50	46.0	2,300	3.19	7,342	18	16.0	288

^{1/} Revised.

New Mexico Sorghum Yields 1980-2009



Sorghum: Acreage, Yield, and Production by County

2008	Planted All Purposes			Harvested for Grain								
	-----Acres-----			-----Acres-----			Yield Per Acre (Bu.)			Production (1,000 Bu.)		
	Irrig	Non-Irrig	Total	Irrig	Non-Irrig	Total	Irrig	Non-Irrig	Total	Irrig	Non-Irrig	Total
DISTRICT 30	35,000	80,000	115,000	17,400	52,000	69,400	70	20	32	1,212	1,020	2,232
Curry	18,200	34,800	53,000	8,100	20,900	29,000	60	16	29	490	340	830
Other Counties	16,800	45,200	62,000	9,300	31,100	40,400	103	22	35	722	680	1,402
Combined Districts	14,000	1,000	15,000	10,600	---	10,600	114	---	114	1,208	---	1,208
STATE	49,000	81,000	130,000	28,000	52,000	80,000	86	20	43	2,420	1,020	3,440

2009	Planted All Purposes			Harvested for Grain								
	-----Acres-----			-----Acres-----			Yield Per Acre (Bu.)			Production (1,000 Bu.)		
	Irrig	Non-Irrig	Total	Irrig	Non-Irrig	Total	Irrig	Non-Irrig	Total	Irrig	Non-Irrig	Total
DISTRICT 30	1/	1/	77,500	1/	1/	45,300	1/	1/	39	1/	1/	1,764
Curry	1/	1/	34,600	1/	1/	18,600	1/	1/	50	1/	1/	939
Combined Counties	1/	1/	42,900	1/	1/	26,700	1/	1/	31	1/	1/	825
DISTRICT 90	1/	1/	4,900	1/	1/	2,500	1/	1/	100	1/	1/	250
Chaves	1/	1/	1,800	1/	1/	500	1/	1/	76	1/	1/	38
Lea	1/	1/	2,300	1,600	---	1,600	104	---	104	167	---	167
Combined Counties	800	---	800	400	---	400	113	---	113	45	---	45
Districts 10 & 70	2,600	---	2,600	2,200	---	2,200	130	---	130	286	---	286
STATE	29,000	56,000	85,000	14,200	35,800	50,000	92	28	46	1,300	1,000	2,300

^{1/}To avoid disclosure, published only total.

Corn: Acreage, Production, Price, and Value

Crop Year	Planted for All Purposes	Harvested for Grain					Harvested for Silage		
		Acreage	Yield Per Acre	Production	Price Per Bushel	Value of Production	Acreage	Yield Per Acre	Production
	1,000 Acres	1,000 Acres	Bushels	1,000 Bushels	Dollars	1,000 Dollars	1,000 Acres	Tons	1,000 Tons
1980	105	75	90	6,750	3.60	24,300	26	14.0	364
1985	92	65	155	10,075	2.67	26,900	25	23.0	575
1990	85	55	145	7,975	2.67	21,293	27	19.0	513
1995	123	73	160	11,680	2.95	34,456	49	18.0	882
2000	150	66	160	10,560	2.52	26,611	82	23.0	1,886
2005	140	55	175	9,625	2.60	25,025	84	24.0	2,016
2006	130	45	185	8,325	3.70	30,803	84	25.0	2,100
2007	135	54	180	9,720	5.20	50,544	80	25.0	2,000
2008 ^{1/}	140	55	180	9,900	5.30	52,470	83	25.0	2,075
2009	130	50	185	9,250	4.00	37,000	78	27.0	2,106

^{1/} Revised.

Corn Silage: Acreage, Yield, and Production by County

District/County	-----2008-----			-----2009-----		
	Acreage Harvested	Yield Per Acre	Production	Acreage Harvested	Yield Per Acre	Production
	-----Tons-----			-----Tons-----		
DISTRICT 10^{1/}	8,500	21.0	180,000	4,400	27.5	120,000
DISTRICT 30	35,000	26.5	922,000	39,000	27.5	1,076,000
Curry	14,200	29.0	415,000	17,100	30.0	512,000
Roosevelt	12,500	22.5	280,000	^{2/}	^{2/}	^{2/}
Combined Counties	8,300	27.5	227,000	21,900	26.0	564,000
DISTRICT 70	^{1/}	^{1/}	^{1/}	2,400	27.0	65,000
Luna	^{1/}	^{1/}	^{1/}	1,600	27.5	44,000
Sierra	^{1/}	^{1/}	^{1/}	500	26.0	13,000
Combined Counties	^{1/}	^{1/}	^{1/}	300	26.5	8,000
DISTRICT 90	39,500	24.5	973,000	32,200	26.0	845,000
Chaves	16,500	29.0	476,000	16,200	28.5	464,000
Doña Ana	9,700	22.5	218,000	6,400	26.0	165,000
Eddy	3,300	18.0	59,000	^{2/}	^{2/}	^{2/}
Lea	10,000	22.0	220,000	^{2/}	^{2/}	^{2/}
Combined Counties	---	---	---	9,600	22.5	216,000
STATE	83,000	25.0	2,075,000	78,000	27.0	2,106,000

^{1/} To avoid disclosure, Districts 10 & 70 were combined in 2008.

^{2/} To avoid disclosure, published in combined counties.

Corn Grain: Acreage, Yield, and Production by County

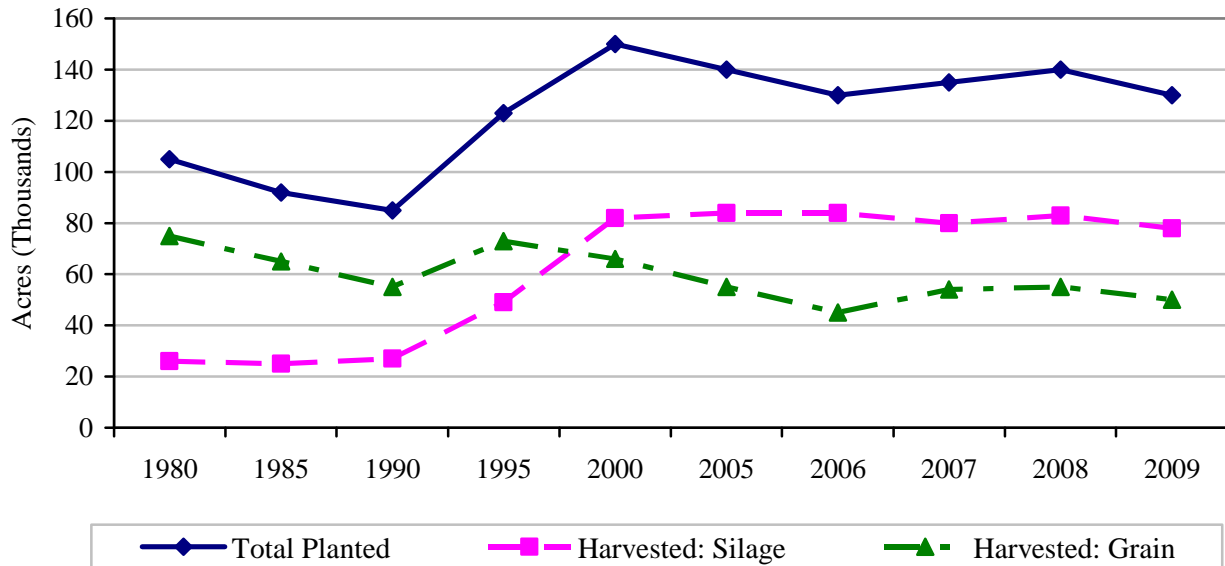
District/County	-----2008-----				-----2009-----			
	Planted for all Purposes	Harvested for Grain	Yield Per Acre	Production	Planted for all Purposes	Harvested for Grain	Yield Per Acre	Production
	-----Acres-----		-----Bushels-----		-----Acres-----		-----Bushels-----	
DISTRICT 10	15,000	11,000	184	2,020,000	22,200	17,800	177	3,140,000
San Juan	1/	1/	1/	1/	17,700	17,800	176	3,140,000
Combined Counties	1/	1/	1/	1/	4,500	---	---	---
DISTRICT 30	75,500	40,500	180	7,275,000	68,000	27,200	193	5,260,000
Curry	22,300	8,100	195	1,583,000	21,700	4,500	197	885,000
Roosevelt	18,400	5,900	136	801,000	2/	2/	2/	2/
Union	2/	2/	2/	2/	20,900	18,600	206	3,840,000
Combined Counties	34,800	26,500	185	4,891,000	25,400	4,100	130	535,000
Districts 70 and 90	49,500	3,500	173	605,000	39,800	5,000	170	850,000
STATE	140,000	55,000	180	9,900,000	130,000	50,000	185	9,250,000

^{1/} To avoid disclosure, published only in District total.

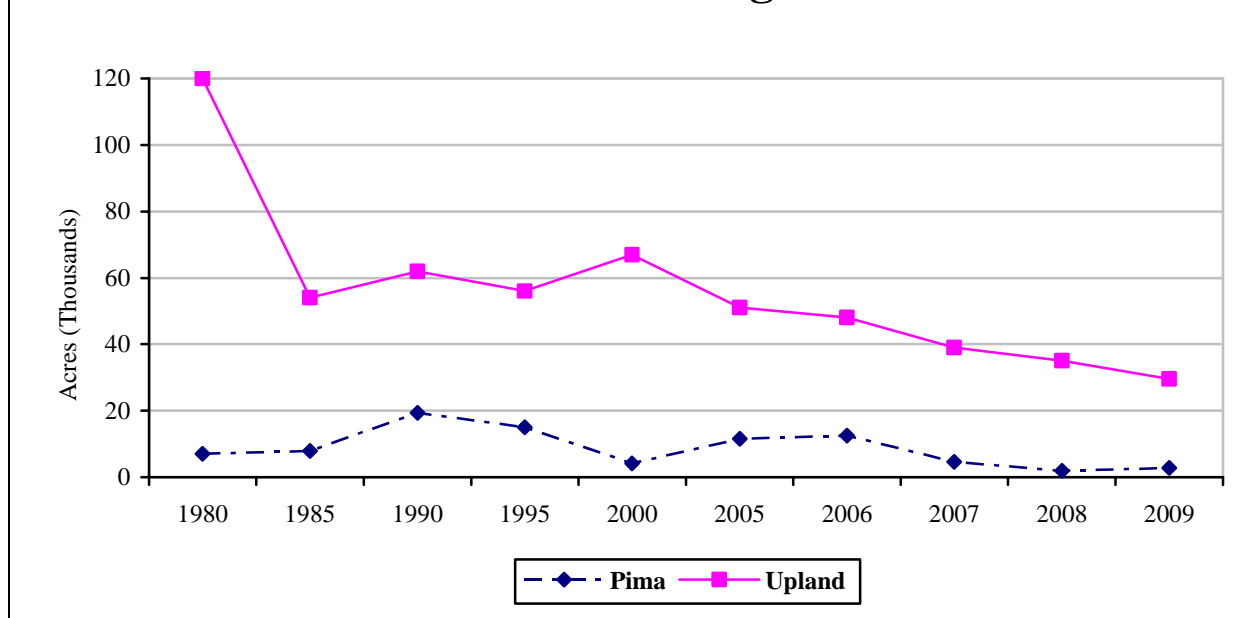
^{2/} To avoid disclosure, published in combined counties.



New Mexico Corn Acreage 1980-2009



Cotton Harvested Acreage 1980-2009



Cottonseed: Production, Farm Disposition, Price, and Value

Crop Year	Farm Disposition			Season Average Price Per Ton Dollars	Value of Production 1,000 Dollars
	Production	Sold to Oil Mills	Other ^{1/}		
	-----1,000 Tons-----				
1980	45.0	40.0	5.0	124	5,580
1985	31.3	20.0	11.3	61	1,909
1990	48.0	13.0	35.0	143	6,864
1995	33.4	3.1	30.3	137	4,576
2000	39.7	6.3	33.4	120	4,764
2005	45.0	---	45.0	108	4,860
2006	40.0	---	40.0	173	6,920
2007 ^{1/}	33.5	---	33.5	183	6,131
2008 ^{2/}	25.0	---	25.0	289	7,225
2009^{3/}	25.4	---	25.4	180	3,420

^{1/}Includes planting seed, exports, interfarm sales, shrinkage, losses, and other uses.

^{2/}Revised.

^{3/}Value of production is preliminary.

Peanuts: Acreage, Yield, Production, Price, and Value

Crop Year	Acreage		Yield	Production	Price	Value of
	Planted	Harvested	Per Acre		Per Pound	Production
	<u>Acres</u>		<u>Pounds</u>	<u>1,000 Pounds</u>	<u>Cents</u>	<u>1,000 Dollars</u>
1980	8,900	8,800	2,540	22,352	28.0	6,259
1985	12,400	12,400	2,580	31,992	29.3	9,374
1990	20,000	20,000	2,500	50,000	31.7	15,850
1995	20,000	20,000	2,150	43,000	33.6	14,448
2000	27,300	26,000	2,115	54,990	32.0	17,597
2005	19,000	19,000	3,500	66,500	20.0	13,300
2006	12,000	12,000	3,600	43,200	18.5	7,992
2007	10,000	10,000	3,200	32,000	20.0	6,400
2008 ^{1/}	8,000	8,000	3,200	25,600	24.2	6,195
2009	7,000	7,000	3,100	21,700	32.8	7,118

^{1/}Revised.



Peanuts: Acreage, Yield, and Production by County

District/County	Acreage							
	Planted		Harvested		Yield Per Acre		Production	
	-----Acres-----		-----Pounds-----		---1,000 Pounds---			
	<u>2008</u>	<u>2009</u>	<u>2008</u>	<u>2009</u>	<u>2008</u>	<u>2009</u>	<u>2008</u>	<u>2009</u>
DISTRICT 30	3,900	4,200	3,900	4,200	2,050	2,285	8,000	9,600
DISTRICT 90	4,100	2,800	4,100	2,800	4,295	4,320	17,600	12,100
Lea	4,100	2,800	4,100	2,800	4,295	4,320	17,600	12,100
STATE	8,000	7,000	8,000	7,000	3,200	3,100	25,600	21,700

Vegetables and Nuts

CHILE: Planted chile acreage in 2009 increased by 4 percent to 12,800 acres from 2008, with 96 percent of the crop harvested at 12,300 acres. These increases helped boost production by 21 percent from 60,140 tons in 2008 to 72,700 tons in 2009. All varieties had a larger overall percentage of harvested acreage from the 2008 crop year.

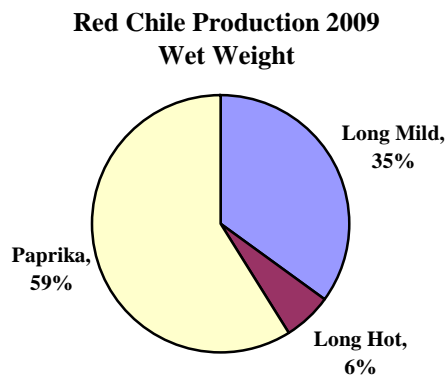
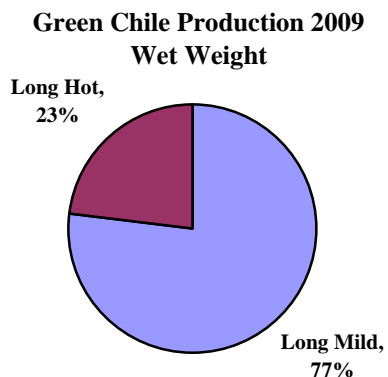
At the state level, yields were up for most varieties with long mild green having the largest increase from 11 tons per acre in 2008 to 13.3 tons per acre in 2009. Paprika yields remained steady at 1.6 tons per acre, while red long mild yields increased from 1.3 tons per acre to 2.1 tons per acre. Long hot red yields rose from 1.1 to 1.7 tons per acre.

The value of New Mexico chile was estimated at \$57.4 million, rising 21 percent above the previous year.

2009 Chile: Acreage and Production by District and County

District/ County	Planted Acreage			Harvested Acreage			Production (Tons)		
	2007	2008	2009	2007	2008	2009	2007	2008	2009
District 70	5,900	5,200	5,100	5,500	4,700	4,900	32,100	32,640	33,400
Hidalgo	700	700	900	600	700	800	2,850	4,500	5,300
Luna	4,000	3,700	3,200	3,700	3,300	3,200	25,150	23,220	22,900
Other Counties ^{1/}	1,200	800	1,000	1,200	700	900	4,100	4,920	5,200
District 90	6,100	7,100	7,700	5,500	6,400	7,400	16,900	27,500	39,300
Doña Ana	3,400	3,800	3,900	3,200	3,200	3,700	12,800	20,600	32,000
Other Counties	2,700	3,300	3,800	2,300	3,200	3,700	4,100	6,900	7,300
STATE	12,000	12,300	12,800	11,000	11,100	12,300	49,000	60,140	72,700

^{1/} District 10 and District 30 were included in District 70, Other Counties.



Chile Acreage, Yield, Production and Value by Variety

Variety	Acreage Harvested ^{1/}		Yield Per Acre ^{2/}		Production		Average Price Per Ton		Value of Production	
	2008	2009	2008	2009	2008	2009	2008	2009	2008	2009
Green			-----Tons-----				-----Dollars-----		-----\$1,000-----	
Long Mild	3,600	3,300	11.0	13.3	39,700	44,000	395	455	15,700	20,000
Long Hot ^{3/}	1,000	1,300	9.0	10.3	9,000	13,400	462	538	4,160	7,210
Red										
Paprika	5,000	5,800	1.6	1.6	7,800	9,000	1,910	1,971	14,900	17,740
Long Mild	2,300	2,500	1.3	2.1	3,100	5,300	2,032	2,000	6,300	10,600
Long Hot	500	600	1.1	1.7	540	1,000	2,315	1,820	1,250	1,820
Total	11,100	12,300	5.4	5.9	60,140	72,700	704	789	42,310	57,370

^{1/} 1,200 acres were harvested for both green and red, but only counted once in the total.

^{2/} Yields influenced by lower yielding acreage harvested for both green and red.

^{3/} Beginning in 2008 Jalapeño and Cayenne were combined with Green Long Hot.

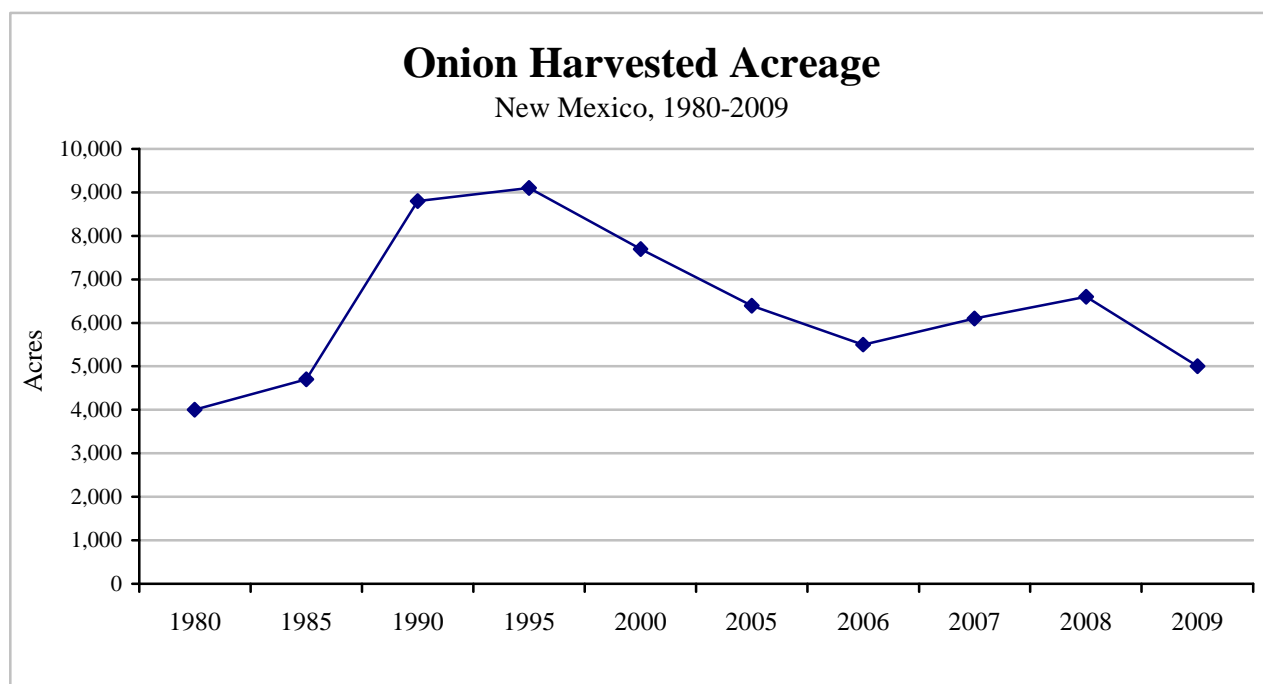
Chile Yields by District, County and Variety

District/County	---Green---				---Red---					
	Long Mild		Long Hot		Paprika		Long Mild		Long Hot	
	2008	2009	2008	2009	2008	2009	2008	2009	2008	2009
	----- Tons -----				----- Tons -----					
District 70	11.5	12.9	9.2	1/	1.8	1.6	1.3	2.5	1/	1/
Luna	10.9	16.7	1/	1/	1.8	1.6	1.6	2.0	1/	1/
Other Counties	1/	1/	1/	1/	1/	1/	1.0	3.2	1/	1/
District 90	10.2	13.8	8.7	10.4	1.5	1.5	1.4	1.8	1.0	1.5
Doña Ana	10.2	13.8	9.3	10.5	1.4	1.6	1.4	1.8	1.0	1.5
Other Counties	1/	1/	1/	1/	1.5	1.5	---	1/	---	1/
State	11.0	13.3	9.0	10.3	1.6	1.6	1.3	2.1	1.1	1.7

^{1/} Not published to avoid disclosing individual information.

ONIONS: Onion growers in New Mexico planted 5,200 acres and harvested 5,000 acres in 2009. The average yield increased from the previous year's yield of 500 cwt per acre to 550 cwt per acre. Price per cwt increased from \$14.40 to \$19.60. This resulted in total value of production of \$53.9 million.

The major varieties of commercially grown New Mexico onions include Grano, Granex, Sweet Spanish, and mid-summer hybrids such as the popular Nu-Mex variety. Most of the state's onions are nonstorage varieties. During our peak summer harvest period, New Mexico is a major supplier for the nation. Harvest usually begins mid-May and continues into September.



Onions: Monthly Prices Received

Year	June	July	August	September
-----Dollars Per 100 Lbs.-----				
1980	9.00	9.00	9.80	---
1985	9.60	21.50	9.80	7.50
1990	10.40	9.55	9.00	8.50
1995	11.70	14.80	11.40	---
2000	11.30	7.80	11.90	---
2005	12.70	17.80	18.10	---
2006	13.10	20.50	20.30	---
2007	24.90	22.00	13.30	---
2008	13.50	14.60	15.20	---
2009	18.70	20.00	17.70	---

Onions: Acreage, Yield, Production, and Value

Crop Year	Acreage		Yield Per Acre	Production	Price Per Cwt.	Value of Production
	Planted	Harvested				
	Acres	Acres	Cwt.	1,000 Cwt.	Dollars	1,000 Dollars
1980	4,000	3,900	290	1,131	9.20	10,405
1985	4,700	4,500	325	1,463	12.90	18,873
1990	8,800	8,400	350	2,940	9.71	28,547
1995	9,100	9,100	450	4,095	12.90	52,826
2000	8,000	7,700	460	3,542	9.25	32,764
2005	6,500	6,400	530	3,392	15.80	53,594
2006	6,600	6,400	480	3,072	17.40	53,453
2007	7,300	7,100	500	3,550	20.80	73,840
2008	7,000	6,600	500	3,300	14.40	47,520
2009	5,200	5,000	550	2,750	19.60	53,900

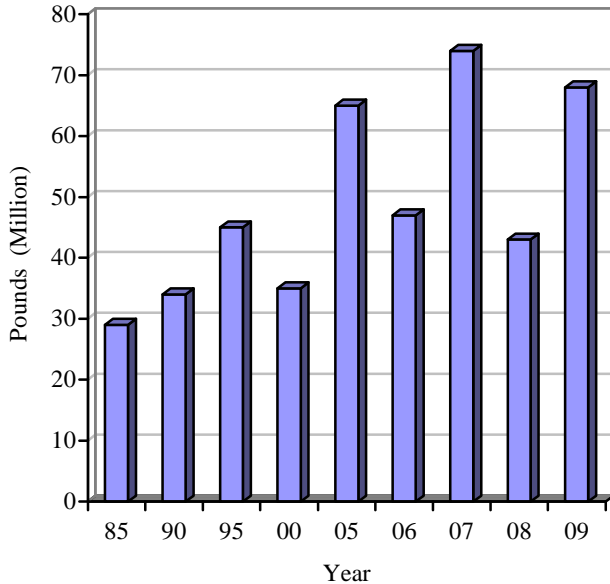
Onions: Acreage, Yield, and Production by County

District/County	Acreage				Yield Per Acre		Production	
	Planted		Harvested					
	-----Acres-----				-----Cwt.-----		----1,000 Cwt.----	
	2008	2009	2008	2009	2008	2009	2008	2009
DISTRICT 70	3,300	2,000	3,100	2,000	484	545	1,500	1,090
DISTRICT 90	3,700	3,200	3,500	3,000	514	553	1,800	1,660
Doña Ana	3,700	3,200	3,500	3,000	514	553	1,800	1,660
STATE	7,000	5,200	6,600	5,000	500	550	3,300	2,750

PECANS: Pecan production in New Mexico totaled 68 million pounds in 2009, a high-bearing year in the alternate bearing cycle. Farmers received \$1.76 per pound on average for their pecans. Value of production totaled more than \$119 million, the highest in the Nation.

Pecan Production

New Mexico Total In-Shell 1985-2009



Pecans: Production, Price, and Value

Crop Year	Production (in shell)	Price Per Pound	Value of Production
	1,000 Pounds	Dollars	1,000 Dollars
1985	29,000	.88	25,520
1990	34,000	1.53	52,020
1995	45,000	1.24	55,800
2000	35,000	1.37	47,950
2005	65,000	1.70	110,500
2006	47,000	1.85	86,950
2007	74,000	1.30	96,200
2008	43,000	1.45	62,350
2009	68,000	1.76	119,680

Pecans: Orchards, Acres, and Production by County

District/County	2007 Census		Production		
	Bearing Acres	Number of Farms	2007	2008	2009
	-----Number-----		-----1,000 Pounds-----		
DISTRICTS 10, 30 & 70	1,816	145	2,900	2,040	3,500
Luna	1/	40	1/	1/	1,800
Sierra	1/	39	1/	1/	1,300
Combined Counties	1/	66	1/	1/	400
DISTRICT 90	33,930	1,528	71,100	40,960	64,500
Chaves	2,935	111	5,000	3,400	5,800
Doña Ana	25,597	1,145	55,500	31,400	52,100
Eddy	3,112	105	7,500	4,000	3,700
Otero	1,725	123	2,300	1,600	2,200
Combined Counties	561	44	800	560	700
STATE	35,746	1,673	74,000	43,000	68,000

^{1/} Not published due to disclosure.

Census - 2008 Farm and Ranch Irrigation

	Farms	Acres Irrigated	Water Applied Using Only	Farms	Acres Irrigated	Average Acre-Foot Per Acre
Total	8,878	835,639	Gravity systems	5,632	293,717	2.5
1 to 49 acres	6,955	74,312	Down rows or furrows	740	58,975	2.4
50 to 99 acres	628	43,273	Controlled flooding	3,643	160,482	2.8
100 to 199 acres	552	79,720	Uncontrolled flooding	394	29,809	1.2
200 to 499 acres	404	121,007	Other gravity	516	8,644	1.5
500 to 999 acres	181	122,448	Sprinkler systems	1,569	297,791	2.0
1,000 to 1,999 acres	99	131,483	Center Pivot	381	187,014	1.7
2,000 acres or more	59	263,396	Low Pressure	352	169,600	1.6
Total Cropland	8,636	797,975	Medium Pressure	25	13,764	1.8
Cropland Harvested	7,636	711,777	Linear sprinklers	9	16,880	0.9
Cropland for grazing	2,902	73,811	Permanent sprinklers	655	983	2.3
Other cropland	948	12,387	Side roll, wheel move	394	8,624	2.7
Pastureland	1,474	37,664	Hand Move	39	2,028	1.2
Gravity systems	6,742	460,112	Drip, trickle, or low flow micro sprinklers	438	10,863	2.8
Down rows or furrows	1,745	124,977				
Open surface ditches	1,681	86,579	Source or Supplier	Farms	Acres Irrigated	Acre-Foot Applied
Lined	1,063	40,280	Ground Water	3,455	548,401	1,066,753
Unlined	618	46,299	Surface Water On Farm	1,856	98,068	175,381
Underground pipe	75	23,292	Surface Water Off Farm	4,419	291,053	654,215
Controlled flooding	4,199	255,915				
Poly tubing	14	7,555	Irrigated Horticultural Operations: 2008			
Open surface ditches	4,172	204,445	Total Area	Operations	Square feet	Irrigated Square feet
Lined	1,207	103,450	Area under protection sq ft	92	9,613,518	7,769,978
Unlined	2,965	100,995	Area in the open acre	73	2,948	2,679
Underground pipe	217	40,755	Floriculture and bedding crops			
Uncontrolled flooding	543	47,923	Area under protection sq ft	56	9,321,123	7,479,569
Other gravity	744	31,297	Area in the open acre	25	260	260
Sprinkler systems	2,574	459,082	Nursery crops			
Center Pivot	682	326,743	Area under protection sq ft	30	75,606	74,292
Low Pressure	590	283,091	Area in the open acre	32	^{1/}	165
Medium Pressure	82	38,496	Propagative materials			
High Pressure	13	5,156	Area under protection sq ft	24	98,574	98,118
Linear sprinklers	82	85,528	Area in the open acre	--	--	--
Permanent sprinklers	660	2,043	Food crops grown under protection			
Low Pressure	330	1,247	Area under protection sq ft	31	99,207	98,991
Medium to High Pressure	330	796	Sod			
Side roll, wheel move	697	31,750	Area in the open acre	4	1,746	1,497
Big gun or traveler	95	533	Christmas trees			
Hand move	569	12,485	Area in the open acre	18	769	757
Drip, trickle, or low flow micro sprinklers	654	30,308	Other horticultural crops			
Surface Drip	495	7,734	Area under protection sq ft	6	19,008	19,008
Sub-surface drip	66	18,477	Area in the open acre	6	1	1
Low-flow micro sprinklers	159	3,997				

^{1/} Not published to avoid disclosing individual information.

Census - 2008 Organic Production

	Farms	Acres	Quantity	Value of Sales \$1,000		Farms	Peak Inventory	Quantity Sold	Value of Sales \$1,000
Organic Farms	199	---	---	33,465	Milk Cows	7	5,944	1,345	^{1/}
Cropland	185	31,562	---	---	Beef Cows	15	1,891	328	264.8
Pastureland	55	86,114	---	---	Other Cattle	16	4,751	5,145	2,021.9
Total Sales	183	---	---	33,465	Chickens	15	414	^{1/}	^{1/}
Less than \$1,000	19	---	---	10	Expenses			Farms	Total \$1,000
\$1,000 - \$2,499	28	---	---	47	Total Organic Production			199	34,338
\$2,500 - \$4,999	22	---	---	76	Organic Certification			139	406
\$5,000 - \$9,999	35	---	---	252	Fertilizer, lime, and soil conditioners			94	907
\$10,000 - \$19,999	17	---	---	248	Chemicals, beneficial insects and organic materials for pest control			61	157
\$20,000 - \$39,999	14	---	---	352	Gasoline, fuels, and oils			158	1,540
\$40,000 - \$49,999	8	---	---	358	Seed, plants, vines, and trees			135	609
\$50,000 - \$99,999	15	---	---	1,012	Hired labor and contract labor			109	4,292
\$100,000 - \$249,999	8	---	---	1,084	Livestock purchased or leased			20	4,859
\$250,000 - \$499,999	3	---	---	1,309	Feed Purchased			45	13,513
\$500,000 or more	14	---	---	28,717	Interest			52	1,455
Crops	168			8,203.0	Property Taxes Paid			127	401
Vegetables	79	310	---	1,059.5	Rent and lease for land, buildings, and machinery			44	1,056
Beans, Snap (<i>tons</i>)	20	5	1	8.3	Custom work and custom hauling			55	922
Cantaloupes (<i>cwt</i>)	7	1	11	2.2	Repairs, supplies, and maintenance			134	1,475
Carrots (<i>tons</i>)	19	2	3	8.6	Utilities			142	1,487
Garlic (<i>cwt</i>)	29	12	180	50.1	All other production expenses			88	1,258
Herbs, Fresh Cut (<i>lbs</i>)	17	7	3,358	19.1	Sales Outlets			Farms	Percent of Sales
Lettuce (<i>cwt</i>)	21	11	176	50.6	Consumer direct sales:				
Onions (<i>tons</i>)	15	4	3	6.3	On- site (e.g., farm stand, u-pick)			51	1.0
Peas (<i>tons</i>)	14	9	13	9.1	Farmer's Market			74	1.7
Peppers, Bell (<i>cwt</i>)	12	2	160	11.9	Community Supported Agriculture (CSA)			9	0.7
Potatoes (<i>cwt</i>)	15	8	1,150	18.2	Mail order/Internet			12	3.6
Spinach (<i>tons</i>)	10	1	2	16.0	Other consumer direct			24	7.2
Squash (<i>cwt</i>)	25	9	106	22.2	Direct-to-retail sales:				
Corn, Sweet (<i>tons</i>)	24	16	12	37.4	Natural food stores			45	^{1/}
Tomatoes (<i>tons</i>)	41	20	32	165.6	Conventional supermarkets			2	^{1/}
Other vegetables (<i>lbs</i>)	41	199	497,011	615.5	Restaurants/caterers			26	0.2
Fruit (<i>lbs</i>)	54	121	---	191.9	Wholesale market sales:				
Apples (<i>lbs</i>)	36	66	125,834	102.0	Natural food store chain buyer			9	0.2
Grapes (<i>tons</i>)	21	7	4	12.4	Processor, mill or packer			15	26.2
Peaches (<i>tons</i>)	13	7	4	11.7	Sales to other farm operations			19	2.9
Other Fruit (<i>lbs</i>)	17	21	11,888	35.0	First Point of Sales:				
Pecans, All (<i>lbs</i>)	22	^{1/}	139,068	^{1/}	Local			146	20.2
Berries (<i>lbs</i>)	20	21	---	225.2	Regional			31	76.4
Corn, Grain (<i>bushels</i>)	4	648	114,884	^{1/}					
Cotton (<i>bales</i>)	3	1,700	2,446	1,170.0					
Hay (<i>tons</i>)	41	3,934	13,192	1,430.0					
Herbs, Dried (<i>lbs</i>)	6	7	1,000	17.6					
Sorghum, Grain (<i>bushels</i>)	5	2,784	49,444	238.7					
Wheat, Winter (<i>bushels</i>)	11	5,916	151,710	932.9					

^{1/} Not published to avoid disclosing individual information



U.S. DEPARTMENT OF AGRICULTURE
NATIONAL AGRICULTURAL
STATISTICS SERVICE

NEW MEXICO FIELD OFFICE

PO Box 1809, Las Cruces, NM, 88004

1-800-530-8810

<http://www.nass.usda.gov/nm>

nass-nm@nass.usda.gov

IN COOPERATION WITH
NEW MEXICO DEPT. OF AGRICULTURE