



Note: This is the final New Jersey Weekly Crop Weather release for 2009. We wish to thank all the reporters and collaborators who made this report possible throughout the year. We will resume this report in April 2010.

Climate summary for the week ending 8am 11/2/09

Temperatures averaged 51 degrees north, 54 degrees central, and 55 degrees south. Extremes were 77 degrees at Hammonton on November 1, 2009 and 33 degrees at Belvidere on November 2, 2009.

Weekly rainfall averaged 1.93 inches north, 2.30 inches central, and 2.88 inches south. The heaviest 24-hour total was 2.21 inches at Pomona on October 28, 2009 to October 29, 2009.

Rainfall Delays Fall Harvest

Days suitable for field work, for the week ending Sunday, November 1, 2009, were 4.0. Topsoil moisture was rated as 65% adequate and 35% surplus. Subsoil moisture was rated as 75% adequate and 25% surplus. Precipitation was heavy during the week in most localities. Temperatures were above normal across the Garden State. As weather permitted, farmers continued harvesting corn for grain and silage, harvesting soybeans, and cutting hay. Wet conditions continued to hamper corn and soybean drying. Emerged wheat seedlings were rated in mostly good condition. Producers continued harvesting remaining fall vegetables. Beets, broccoli, and cabbage will be harvested through to Thanksgiving. Late-season apple and cranberry harvest neared completion. Other activities included tilling fields, planting small grains, and machinery repair.

Weather Summary for the Week Ending Monday, November 2, 2009

Weather Stations	Rainfall			Temperatures Last Week				Growing Degree Days ¹		Soil Moisture ²
	Last Week	Since March 1		Max.	Min.	Avg.	Dept.*	Total	Dept.*	
		Total	Dept.*							
	Inches	Inches	Inches	Degrees	Degrees	Degrees	Degrees			Percent
North										
Belvidere Bridge	1.84	33.63	(3)	67	33	52	(3)	(3)	(3)	(3)
Canoe Brook ³	N/A	(3)	(3)	N/A	N/A	(3)	(3)	(3)	(3)	(3)
Charlotteburg ³	2.02	28.68	(3)	67	36	51	(3)	(3)	(3)	(3)
Flemington	2.30	39.78	(3)	68	37	52	(3)	(3)	(3)	(3)
Newton ³	1.57	32.54	(3)	66	36	51	(3)	(3)	(3)	(3)
Central										
Freehold	1.83	34.27	(3)	74	42	54	(3)	(3)	(3)	(3)
Long Branch	2.58	37.12	(3)	74	43	56	(3)	(3)	(3)	(3)
New Brunswick	1.97	38.65	(3)	74	41	54	(3)	(3)	(3)	(3)
Toms River	3.21	38.59	(3)	74	40	54	(3)	(3)	(3)	(3)
Trenton	1.91	42.64	(3)	72	40	54	(3)	(3)	(3)	(3)
South										
Cape May C.H.	3.81	39.40	(3)	68	42	53	(3)	(3)	(3)	(3)
Downstown	2.48	33.80	(3)	72	39	54	(3)	(3)	(3)	(3)
Glassboro	2.27	41.03	(3)	72	46	55	(3)	(3)	(3)	(3)
Hammonton	2.87	37.55	(3)	77	41	56	(3)	(3)	(3)	(3)
Pomona	3.56	44.46	(3)	73	42	55	(3)	(3)	(3)	(3)
Seabrook ³	2.30	33.89	(3)	72	45	56	(3)	(3)	(3)	(3)
South Harrison ³	N/A	(3)	(3)	N/A	N/A	(3)	(3)	(3)	(3)	(3)

*Departure from normal.

¹ Growing degree days since March 1, 2009, total and departure from normal or long term average.

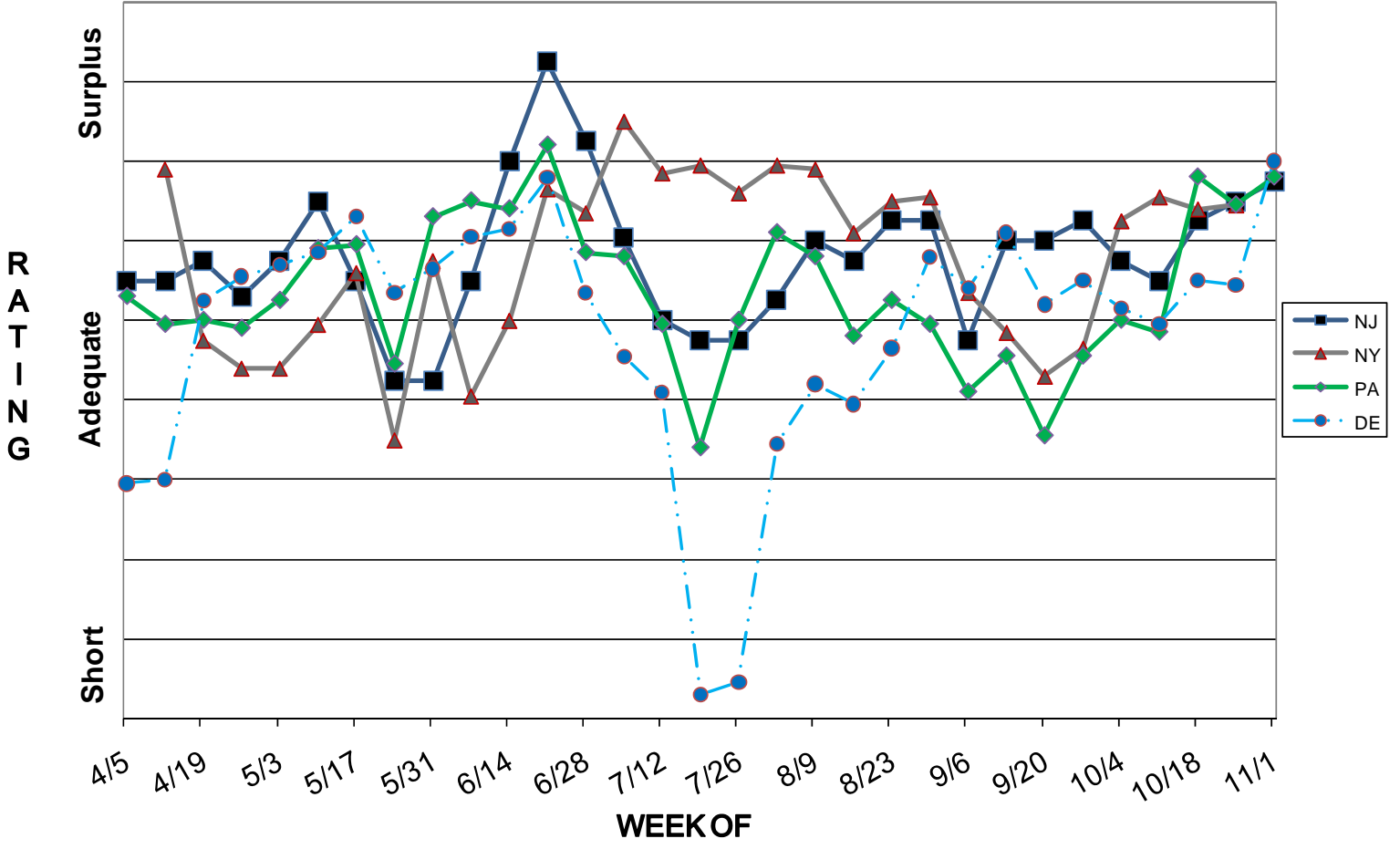
² Estimated soil moisture as % of field capacity based on climate data.

³ Data not available for all historic comparisons.

JERSEY FRESH AVAILABILITY FOR NOVEMBER 2, 2009

APPLES	Fresh apples available thru December from storage. Braeburn, Fuji, & Granny Smith finishing. Cider available until Xmas in wholesale volume, thru late Spring for retail sales.
ARUGULA & CILANTRO	A fair to declining volume of good quality products until frost. Finishing up
BASIL & MINT	Finishing up.
BEETS	Harvesting good quality in fair quantity. Available thru Thanksgiving.
CABBAGE	Harvesting a fair to good volume of very good quality with excellent sizing. Available through Thanksgiving.
COLLARDS	Harvesting good quality and quantity. Likes the cooler weather. Available through Thanksgiving.
CRANBERRIES	The main harvest of great quality fresh market dry harvested berries is finished & in storage. A great harvest due to an ideal combination of rain, sun, & cooler than normal temperatures. About 5% larger than last year.
DILL	Finishing up.
ESCAROLE & ENDIVE	Harvesting in fair volume and good quality.
KALE	A fair to good quantity of good quality product. Available thru Thanksgiving.
LEEK & GR. ONIONS	A fair volume of good quality product is available.
LETTUCES	Harvesting a fair to declining volume of very good quality Boston, Romaine, & Red & Green Leaf until frost. Finishing up.
PARSLEY	Fair to declining quantities of good quality product available until frost.
SPINACH	Harvesting good quality in fair to declining volume until frost.
SQUASH	Acorn and Butternut are harvested, cured into storage, & awaiting sale.
SWEET POTATOES	Harvesting excellent quality potatoes in good volume. One of the best crops in years.
SWISS CHARD	Harvesting fair to good quality in fair volume. Available thru Thanksgiving.
RADISHES & TURNIPS	Harvesting a fair volume of good quality products. These temperature sensitive vegetables love the cooler temperatures.
WHITE POTATOES	Mainly round white varieties have been harvested into storage, with some Yukon Gold, Redskin varieties, and a bit of Russets as well.

TOPSOIL MOISTURE



PASTURE AND RANGE CONDITION

