



**Agricultural Weather Advisory For New Jersey  
And Southeastern Pennsylvania  
Issued By Rutgers University  
New Brunswick, NJ  
8 am EDT Monday, September 21, 2009**

Rainfall amounts none through most of Tuesday, tenth of an inch possible late Tuesday. Winds for spraying south 5 to 10 mph through Tuesday.

Relative humidity in percent 40 to 50 today, 90 to 100 tonight, 50 to 60 Tuesday. Dew points rising from near 50 today to the mid 60s by Tuesday.

Drying conditions good today, fair Tuesday. Heavy dew tonight, some dew as well as possible wetting in a shower Tuesday night. Percent of possible sunshine 90 today, 20 Tuesday.

There is a near zero percent probability of precipitation during the 12 hour period beginning at 8 am and ending at 8 pm. Rainfall could adversely affect the performance of pesticides that require a rain-free period after application.

Conditions should be unfavorable for cranberry scald today and Tuesday. Temperatures in the representative bog will remain above freezing tonight and Tuesday night.

Hay cutting will see good conditions today but only fair Tuesday along with a threat of showers late Tuesday through Wednesday.

The latest 8 to 14 day outlook for the period September 28, 2009 to October 4, 2009 is calling for temperatures to average below normal and precipitation to average above normal.

**Climate summary for the week ending 8am 9/21/09**

Temperatures averaged near normal north and central and below normal south, averaging 61 degrees north, 63 degrees central, and 64 degrees south. Extremes were 82 degrees at Canoe Brook, Hammonton, and Pomona on September 16, 2009, and 41 degrees at Charlotteburg and Flemington on September 20, 2009.

Weekly rainfall averaged 0.14 inches north, 0.18 inches central, and 0.04 inches south. The heaviest 24 hour total reported was 0.55 inches at Toms River on September 15, 2009 to September 16, 2009.

Estimated soil moisture, in percent of field capacity, this past week averaged 88 percent north, 84 percent central, and 75 percent south.

Four inch soil temperatures averaged 63 degrees north, 65 degrees central, and 66 degrees south.

**Early Cranberry Harvest Continues**

Days suitable for field work, for the week ending Sunday, September 20, 2009, were 7.0. Topsoil moisture was rated as 80% adequate and 20% surplus. Subsoil moisture was rated as 85% adequate and 15% surplus. There were measurable amounts of rainfall during the week in some localities. Temperatures were below normal across the Garden State. Early planted soybean fields had matured to the stage of turning color and dropping leaves. Late planted soybean pods were filling out slowly. Some field corn is in the dent stage and small amounts harvested for grain. Chopping corn for silage continued. Hay producers continued final cuttings. Some fall vegetables are being planted. Cantaloupes and cucumbers approached full harvest. Sweet potato harvest began. Apple and grape harvesting continued. Cranberry harvest began with the main harvest underway in another week. Peach and nectarine harvesting concluded. Pastures provided plentiful feed.

**Weather Summary for the Week Ending Monday, September 21, 2009**

Weather Stations	Rainfall			Temperatures				Growing Degree Days <sup>1</sup>		Soil Moisture <sup>2</sup>
	Last Week	Since March 1		Last Week				Total	Dept.*	
		Total	Dept.*	Max	Min.	Avg.	Dept.*			
	Inches	Inches	Inches	Degrees	Degrees	Degrees	Degrees	Base 50° F	Base 50° F	Percent
<b>North</b>										
Belvidere Bridge	0.34	27.44	0.20	80	42	61	-1	2,511	-6	90
Canoe Brook <sup>3</sup>	0.03	29.08 <sup>3</sup>	0.47 <sup>3</sup>	82	45	63	1	2,679 <sup>3</sup>	151 <sup>3</sup>	82
Charlotteburg <sup>3</sup>	0.10	22.36 <sup>3</sup>	-6.53 <sup>3</sup>	79	41	60	1	2,409 <sup>3</sup>	403 <sup>3</sup>	76
Flemington	0.04	32.87	5.51	79	41	61	-1	2,719	128	88
Newton <sup>3</sup>	0.19	27.19 <sup>3</sup>	0.58 <sup>3</sup>	75	43	60	1	2,443 <sup>3</sup>	182 <sup>3</sup>	80
<b>Central</b>										
Freehold	0.05	27.92	1.33	80	43	62	-2	2,869	119	82
Long Branch	0.13	29.81	2.88	80	47	63	-1	2,715	21	64
New Brunswick	0.02	31.90	4.89	81	43	64	0	2,925	40	87
Toms River	0.55	30.06	2.53	80	43	63	-2	2,825	125	82
Trenton	0.13	34.31	8.74	79	44	64	-1	3,039	42	70
<b>South</b>										
Cape May C.H.	0.00	29.87	6.00	79	44	62	-5	2,891	166	65
Downstown	0.00	27.01	1.95	80	42	63	-3	3,025	15	70
Glassboro	0.01	33.50	7.18	80	46	65	0	3,191	213	66
Hammonton	0.00	29.82	3.52	82	42	65	0	3,245	259	61
Pomona	0.25	33.92	10.01	82	44	64	0	3,136	351	70
Seabrook <sup>3</sup>	0.00	26.87 <sup>3</sup>	2.75 <sup>3</sup>	81	47	65	-1	2,769 <sup>3</sup>	-260 <sup>3</sup>	64
South Harrison <sup>3</sup>	0.09	22.84 <sup>3</sup>	-2.97 <sup>3</sup>	80	48	65	NA	NA	NA	NA

\* Departure from normal.

<sup>1</sup> Growing degree days since March 1, 2009, total and departure from normal or long term average.

<sup>2</sup> Estimated soil moisture as % of field capacity based on climate data.

<sup>3</sup> Data not available for all historic comparisons.

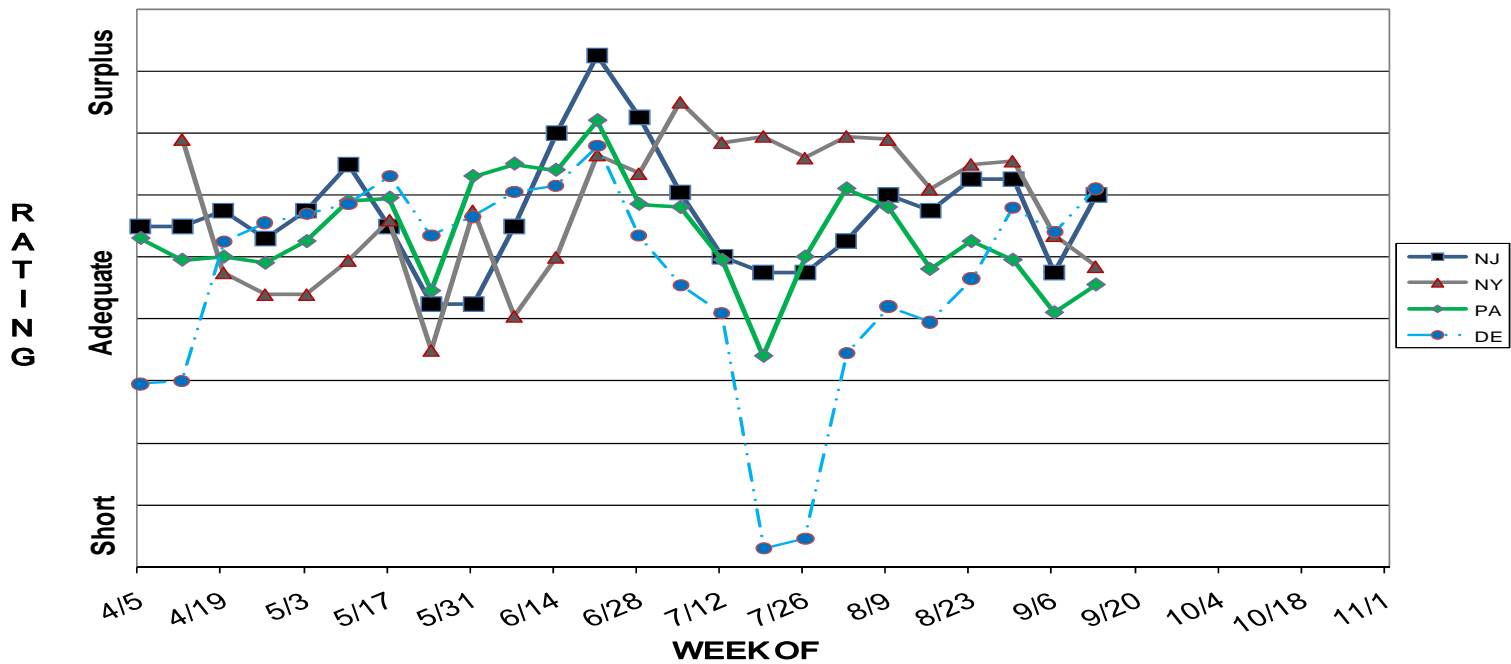
**JERSEY FRESH AVAILABILITY FOR SEPTEMBER 21, 2009**

<b>APPLES</b>	Fresh apples available thru Dec. Jonathan, Gala, & Courtland winding down. Red Delicious, Empire, Jonagold, and McCoun picking now. Golden Delicious, Rome, and Stayman/Winesap starting early October. Braeburn, Fuji, and Granny Smith will start mid to late October.
<b>ARUGULA &amp; CILANTRO</b>	A light to fair volume of good quality products.
<b>BASIL &amp; MINT</b>	Like warmer weather so harvesting good quality product in fair to decreasing volume.
<b>BEETS</b>	Harvesting good quality in fair quantity.
<b>CABBAGE</b>	Harvesting a fair volume of very good quality. Excellent sizing. Supply should start to pick up in mid-month.
<b>COLLARDS</b>	Harvesting good quality and quantity.
<b>CUCUMBERS</b>	Harvesting light quantities of good quality cukes with a fair volume of pickles available.
<b>DANDELIONS</b>	A fair to good quantity of very good quality product.
<b>DILL</b>	Harvesting a light volume in fair to good quality.
<b>EGGPLANT &amp; PEPPERS</b>	Harvesting good quality products in fair supply.
<b>ESCAROLE &amp; ENDIVE</b>	Harvesting in light to increasing volume and good quality.
<b>KALE</b>	A fair to good quantity of good quality product.
<b>LEEKS &amp; GR. ONIONS</b>	A fair volume of good quality product is available.
<b>LETTUCES</b>	Starting to harvest a light to increasing volume of very good quality Boston & Romaine. Red & Green Leaf starting by the weekend.
<b>NECTARINES</b>	Finishing up. Excellent size and quality.
<b>PARSLEY</b>	Fair quantities of good quality curly and plain.
<b>PEACHES</b>	Excellent quality late season fruit still available for another week or so. Yellow Fayette, Encore, & Lauro varieties. White Lady Nancy variety.
<b>SPINACH</b>	Starting to harvest good quality in light to increasing volume.
<b>SQUASH</b>	Harvesting fair quantities of very good quality Yellow, Green, Acorn, and Butternut.
<b>SWEET CORN</b>	Harvesting a fair to decreasing quantity of good quality corn. Expect increased quality variations in the marketplace due to the annual cycle of insect pressures and cool overnight temperatures slowing ripening.
<b>SWEET POTATOES</b>	Harvesting good quality potatoes with volume just becoming available.
<b>SWISS CHARD</b>	Harvesting fair to good quality in fair to increasing volume.
<b>TOMATOES</b>	Harvest volume is off due to season long field problems and low prices. Harvesting a very light quantity of fair to good quality fruit.
<b>RADISHES &amp; TURNIPS</b>	Very light to increasing volume. These temperature sensitive vegetables will start to increase in supply with cooler temperatures.
<b>WHITE POTATOES</b>	Harvesting mainly round white varieties, with some Yukon Gold, Redskin varieties, and a bit of Russets as well.

**JERSEY FRESH FORECAST**

<b>CRANBERRIES</b>	The main harvest of fresh market dry harvested berries should begin by the end of the month.
--------------------	--

**TOPSOIL MOISTURE**



**PASTURE AND RANGE CONDITION**

