



Nevada Crop Progress & Condition

Pacific Regional Office · 650 Capitol Mall, Suite 6-100 · Sacramento, CA 95814 · (916) 738-6600 · www.nass.usda.gov/nv

Week Ending August 18, 2024

Released August 19, 2024

Weather Summary

The average low temperatures for Nevada ranged from 40 degrees in Ely to 81 degrees in Las Vegas. The average high temperatures ranged from 89 degrees in Ely to 109 degrees in Las Vegas. Precipitation for the state was only observed in Eureka with 0.03 inches.

Crops Summary

Days Suitable for Fieldwork: 7.0 days. Topsoil Moisture: 40% very short, 15% short, 35% adequate, and 10% surplus. Subsoil Moisture: 30% very short, 40% short, 25% adequate, and 5% surplus. Pasture and Range Condition: 30% very poor, 10% poor, 15% fair, 25% good, and 20% excellent. **Alfalfa** was almost ready for a third cutting. Daytime temperatures decreased into the 90's, and there was little to no precipitation recorded during the week.

Weather for the Week of 8/12/2024 through 8/18/2024

Station	Temperature				Precipitation ²
	High	Low	Average	Departure from Normal ¹	
	-- Degrees Fahrenheit --				
Reno	92	54	73	-3	0.00
Elko	93	44	70	0	0.00
Ely	89	40	68	0	0.00
Winnemucca	94	46	71	-1	0.00
Eureka	91	47	70	1	0.03
Tonopah	93	53	74	0	0.00
Las Vegas	109	81	95	3	0.00

¹ Normal periods 1990-2020 used in departure from normal calculations.

² Rain or melted snow/ice.

Data retrieved from NOAA and NWS. Calculated by USDA NASS. All rights reserved.

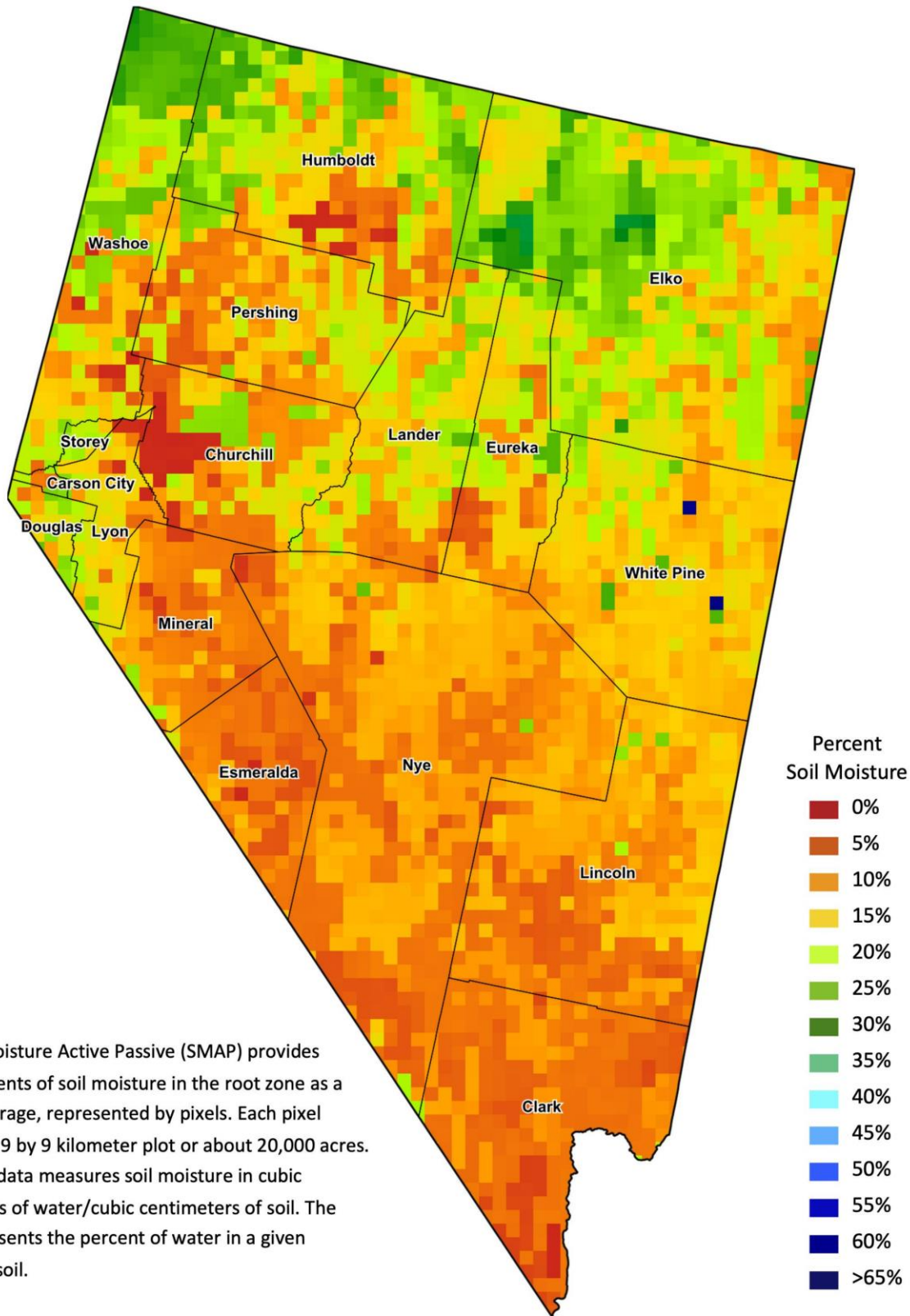
Drought Conditions from the U.S. Drought Monitor as of 8/13/2024

Time	Percent of Land in Drought Rating						Drought Severity (DSCI)
	None	D0	D1	D2	D3	D4	
Current	30.51	64.92	4.57	0.00	0.00	0.00	74
Last Week	30.49	66.34	3.17	0.00	0.00	0.00	73
3 Months Ago	95.36	3.24	1.39	0.00	0.00	0.00	6
One Year Ago	78.08	7.79	14.14	0.00	0.00	0.00	36

The U.S. Drought Monitor is jointly produced by the National Drought Mitigation Center at the University of Nebraska-Lincoln, the United States Department of Agriculture, and the National Oceanic and Atmospheric Administration.
droughtmonitor.unl.edu/CurrentMap/StateDroughtMonitor.aspx?NV



Nevada Soil Moisture Map for the Week of August 5 - 11, 2024



The Soil Moisture Active Passive (SMAP) provides measurements of soil moisture in the root zone as a weekly average, represented by pixels. Each pixel represents 9 by 9 kilometer plot or about 20,000 acres. The SMAP data measures soil moisture in cubic centimeters of water/cubic centimeters of soil. The scale represents the percent of water in a given volume of soil.