



Nevada Crop Progress & Condition

Pacific Regional Office · 650 Capitol Mall, Suite 6-100 · Sacramento, CA 95814 · (916) 738-6600 · www.nass.usda.gov/nv

Week Ending July 28, 2024

Released July 29, 2024

Weather Summary

The average low temperatures for Nevada ranged from 55 degrees in Ely to 89 degrees in Las Vegas. The average high temperatures ranged from 91 degrees in Eureka to 112 degrees in Las Vegas. Precipitation for Nevada ranged from 0.02 inches in Eureka to 0.11 inches in Tonopah.

Crops Summary

Days Suitable for Fieldwork: 7.0 days. Topsoil Moisture: 20% very short, 15% short, 50% adequate, and 15% surplus. Subsoil Moisture: 10% very short, 30% short, 55% adequate, and 5% surplus. Pasture and Range Condition: 5% very poor, 5% poor, 20% fair, 45% good, and 25% excellent. Daytime temperatures remained hot, but nights were cooler than average. Scattered thunderstorms brought a small amount of precipitation, and lightning strikes caused a few small fires. In addition, smoke from the Park Fire in Northern California was carried into Nevada, potentially slowing crop growth. The second cutting of **alfalfa** was complete. **Corn** continued growing well. Winter **wheat** was mostly harvested, and spring wheat was curing with some lodging in a few stands.

Weather for the Week of 7/21/2024 through 7/28/2024

Station	Temperature				Precipitation ²
	High	Low	Average	Departure from Normal ¹	
	-- Degrees Fahrenheit --				
Reno	103	71	87	9	0.00
Elko	101	61	82	9	0.00
Ely	92	55	74	4	0.00
Winnemucca	100	61	83	7	0.00
Eureka	91	57	74	3	0.02
Tonopah	99	62	82	6	0.11
Las Vegas	112	89	100	6	0.00

¹ Normal periods 1990-2020 used in departure from normal calculations.

² Rain or melted snow/ice.

Data retrieved from NOAA and NWS. Calculated by USDA NASS. All rights reserved.

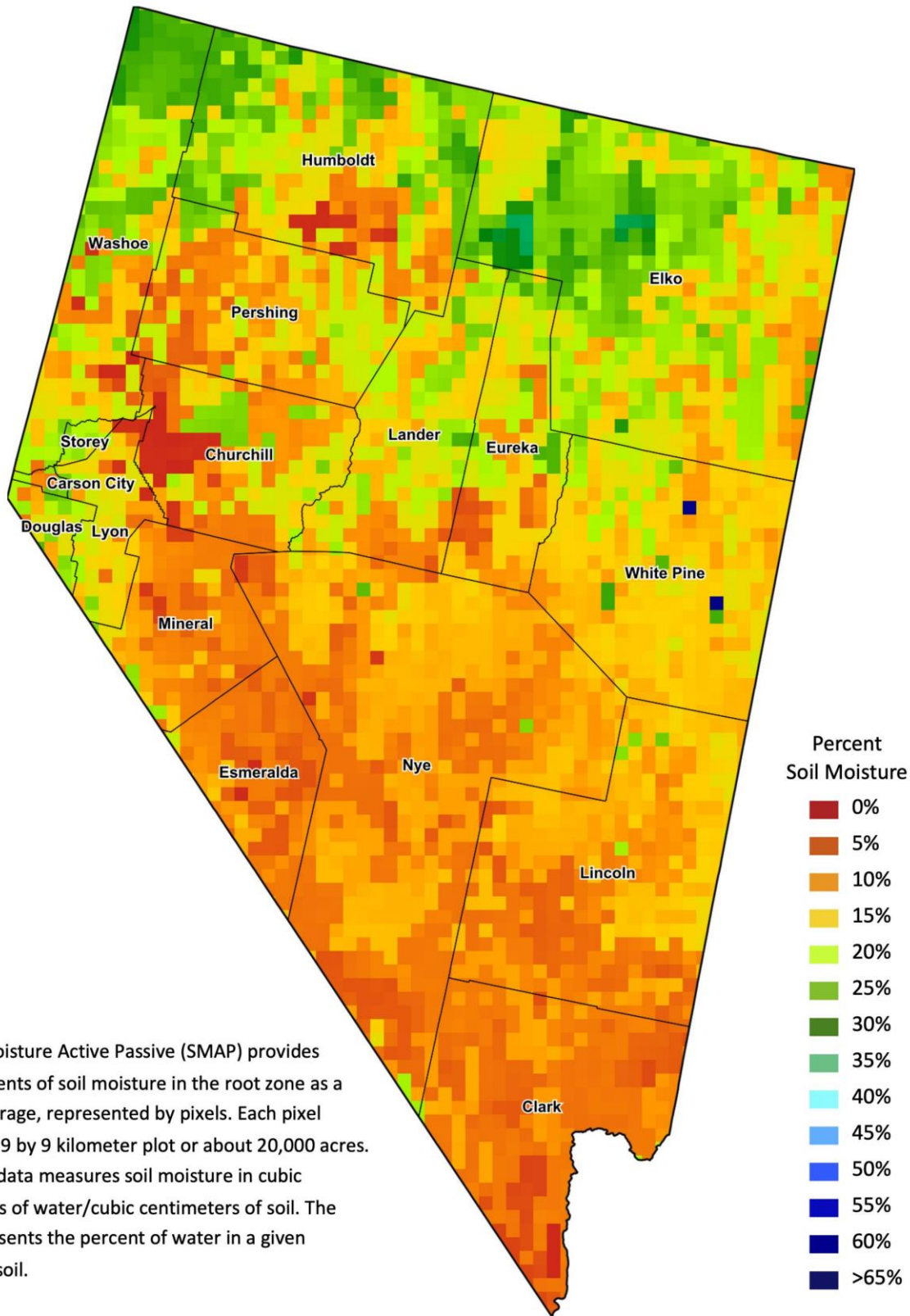
Drought Conditions from the U.S. Drought Monitor as of 7/23/2024

Time	Percent of Land in Drought Rating						Drought Severity (DSCI)
	None	D0	D1	D2	D3	D4	
Current	34.54	63.99	1.47	0.00	0.00	0.00	67
Last Week	43.39	56.08	0.53	0.00	0.00	0.00	57
3 Months Ago	95.37	3.24	1.39	0.00	0.00	0.00	6
One Year Ago	78.45	7.45	14.11	0.00	0.00	0.00	36

The U.S. Drought Monitor is jointly produced by the National Drought Mitigation Center at the University of Nebraska-Lincoln, the United States Department of Agriculture, and the National Oceanic and Atmospheric Administration.
droughtmonitor.unl.edu/CurrentMap/StateDroughtMonitor.aspx?NV



Nevada Soil Moisture Map for the Week of July 15 - 21, 2024



The Soil Moisture Active Passive (SMAP) provides measurements of soil moisture in the root zone as a weekly average, represented by pixels. Each pixel represents 9 by 9 kilometer plot or about 20,000 acres. The SMAP data measures soil moisture in cubic centimeters of water/cubic centimeters of soil. The scale represents the percent of water in a given volume of soil.