



Nevada Crop Progress & Condition

Pacific Regional Office · 650 Capitol Mall, Suite 6-100 · Sacramento, CA 95814 · (916) 738-6600 · www.nass.usda.gov/nv

Week Ending May 5, 2024

Released May 6, 2024

Weather Summary

The average low temperatures for Nevada ranged from 20 degrees in Ely to 59 degrees in Las Vegas. The average high temperatures ranged from 65 degrees in Winnemucca to 89 degrees in Las Vegas. Precipitation for Nevada ranged from 0.16 inches in Eureka, 0.25 inches in Elko, and 0.52 inches in Ely.

Crops Summary

Days Suitable for Fieldwork: 5.6 days. Topsoil Moisture: 25% short, 50% adequate and 25% surplus. Subsoil Moisture: 20% short, 65% adequate and 15% surplus. Pasture and Range Condition: 20% fair, 45% good, and 35% excellent. There were scattered rains during the week. Irrigation continued across the state. Fields were prepared for planting **corn**. **Alfalfa**, native grass hay, and forage crops were growing well.

Weather for the Week of 4/29/2024 through 5/5/2024

| Station | Temperature | | | | Precipitation ² |
|------------|--------------------------|-----|---------|------------------------------------|----------------------------|
| | High | Low | Average | Departure from Normal ¹ | |
| | -- Degrees Fahrenheit -- | | | | |
| Reno | 73 | 37 | 53 | -3 | 0.00 |
| Elko | 70 | 26 | 45 | -5 | 0.25 |
| Ely | 68 | 20 | 44 | -3 | 0.52 |
| Winnemucca | 65 | 25 | 45 | -6 | 0.00 |
| Eureka | 66 | 26 | 44 | -2 | 0.16 |
| Tonopah | 73 | 33 | 52 | -2 | 0.00 |
| Las Vegas | 89 | 59 | 74 | 2 | 0.00 |

¹ Normal periods 1990-2020 used in departure from normal calculations.

² Rain or melted snow/ice.

Data retrieved from NOAA and NWS. Calculated by USDA NASS. All rights reserved.

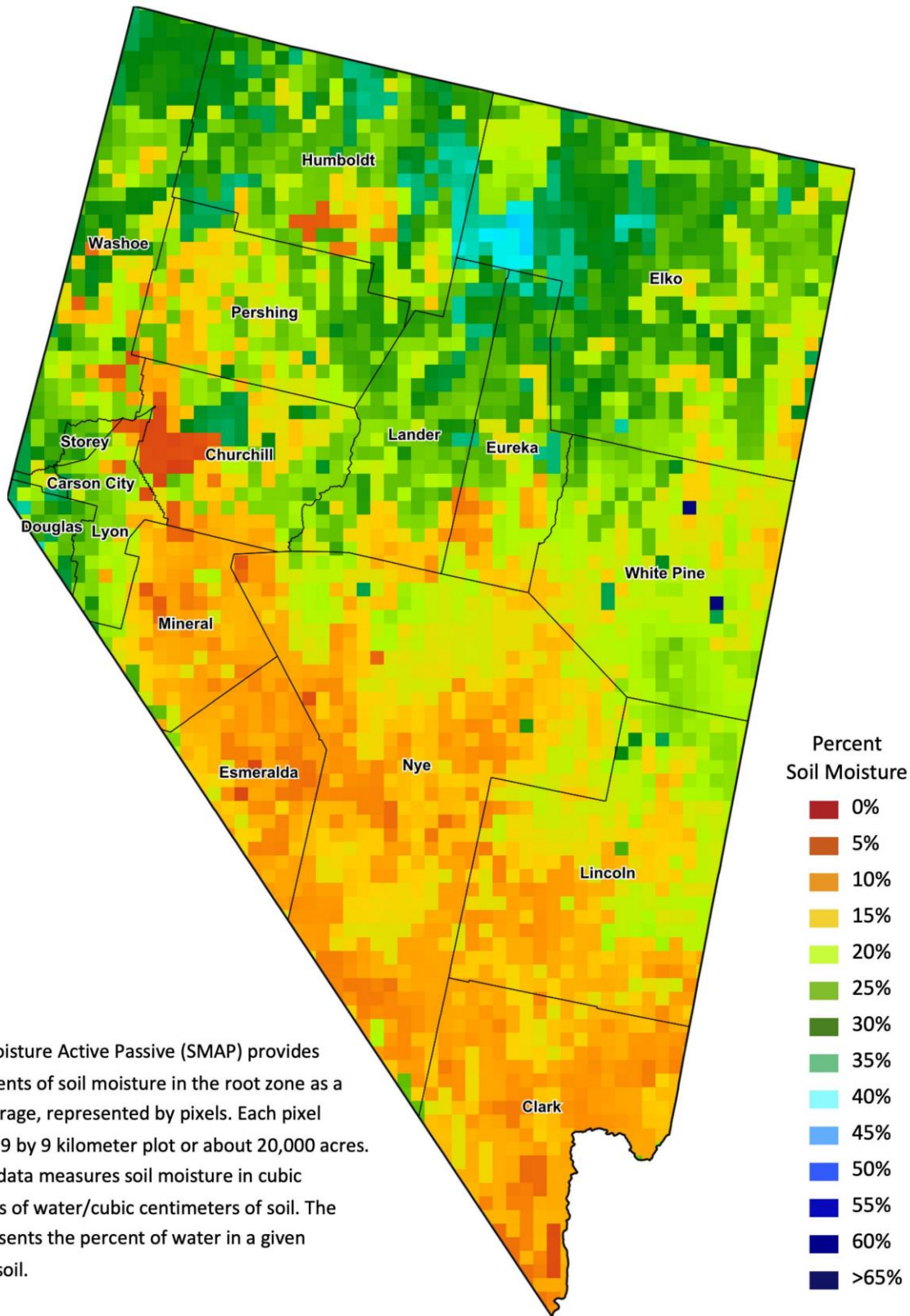
Drought Conditions from the U.S. Drought Monitor as of 4/30/2024

| Time | Percent of Land in Drought Rating | | | | | | Drought Severity (DSCI) |
|--------------|-----------------------------------|-------|-------|------|------|------|-------------------------|
| | None | D0 | D1 | D2 | D3 | D4 | |
| Current | 95.37 | 3.24 | 1.39 | 0.00 | 0.00 | 0.00 | 6 |
| Last Week | 95.37 | 3.24 | 1.39 | 0.00 | 0.00 | 0.00 | 6 |
| 3 Months Ago | 81.41 | 16.98 | 1.60 | 0.00 | 0.00 | 0.00 | 20 |
| One Year Ago | 33.42 | 44.48 | 19.33 | 2.78 | 0.00 | 0.00 | 91 |

The U.S. Drought Monitor is jointly produced by the National Drought Mitigation Center at the University of Nebraska-Lincoln, the United States Department of Agriculture, and the National Oceanic and Atmospheric Administration.
droughtmonitor.unl.edu/CurrentMap/StateDroughtMonitor.aspx?NV



Nevada Soil Moisture Map for the Week of April 22 - 28, 2024



The Soil Moisture Active Passive (SMAP) provides measurements of soil moisture in the root zone as a weekly average, represented by pixels. Each pixel represents 9 by 9 kilometer plot or about 20,000 acres. The SMAP data measures soil moisture in cubic centimeters of water/cubic centimeters of soil. The scale represents the percent of water in a given volume of soil.