



# Nevada Crop Progress & Condition

Pacific Regional Office · 650 Capitol Mall, Suite 6-100 · Sacramento, CA 95814 · (916) 738-6600 · [www.nass.usda.gov/nv](http://www.nass.usda.gov/nv)

Week Ending April 7, 2024

Released April 8, 2024

## Weather Summary

The average low temperatures for Nevada ranged from 14 degrees in Ely and Eureka to 44 degrees in Las Vegas. The average high temperatures ranged from 66 degrees in Ely and Eureka to 79 degrees in Las Vegas. Precipitation for Nevada ranged from 0.02 inches in Eureka, 0.03 inches in Elko, 0.06 inches in Reno, 0.11 inches in Ely, and 1.14 inches in Winnemucca.

## Crops Summary

Days Suitable for Fieldwork: 4.8 days. Topsoil Moisture: 55% adequate and 45% surplus. Subsoil Moisture: 80% adequate and 20% surplus. Pasture and Range Condition: 10% fair, 50% good, and 40% excellent. Most of the Northern portion of the state received heavy snowfall during the week along with rain. Snow melt and rain resulted in standing water as the soil was saturated. Across the state, ground preparations were temporarily halted due to rain and snow. Freezing temperatures potentially damaged growth of emerging crops in some areas. **Alfalfa** growth was slow due to cooler than average temperatures. Rangeland grasses were greening up well. Cattle are on or moving towards spring range.

## Weather for the Week of 4/1/2024 through 4/7/2024

Station	Temperature				Precipitation <sup>2</sup>
	High	Low	Average	Departure from Normal <sup>1</sup>	
	-- Degrees Fahrenheit --				
Reno	73	27	44	-5	0.06
Elko	71	23	41	-2	0.03
Ely	66	14	36	-5	0.11
Winnemucca	68	20	39	-5	1.14
Eureka	66	14	35	-5	0.02
Tonopah	68	21	41	-7	0.00
Las Vegas	79	44	59	-6	0.00

<sup>1</sup> Normal periods 1990-2020 used in departure from normal calculations.

<sup>2</sup> Rain or melted snow/ice.

Data retrieved from NOAA and NWS. Calculated by USDA NASS. All rights reserved.

## Drought Conditions from the U.S. Drought Monitor as of 4/2/2024

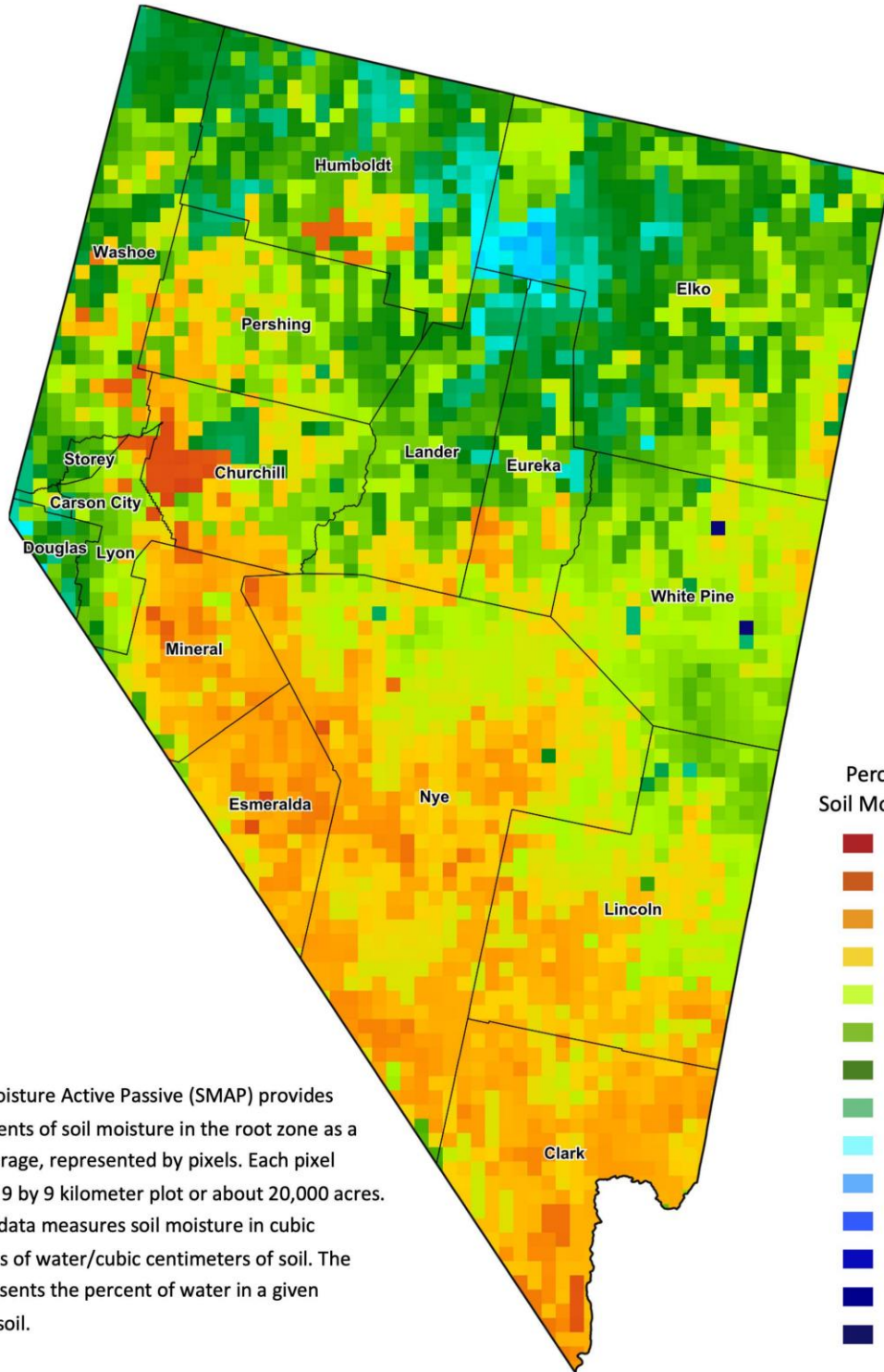
Time	Percent of Land in Drought Rating						Drought Severity (DSCI)
	None	D0	D1	D2	D3	D4	
Current	85.33	13.28	1.39	0.00	0.00	0.00	16
Last Week	85.33	13.28	1.39	0.00	0.00	0.00	16
3 Months Ago	94.37	4.02	1.60	0.00	0.00	0.00	7
One Year Ago	21.51	54.05	21.02	3.43	0.00	0.00	106

The U.S. Drought Monitor is jointly produced by the National Drought Mitigation Center at the University of Nebraska-Lincoln, the United States Department of Agriculture, and the National Oceanic and Atmospheric Administration.

[droughtmonitor.unl.edu/CurrentMap/StateDroughtMonitor.aspx?NV](http://droughtmonitor.unl.edu/CurrentMap/StateDroughtMonitor.aspx?NV)



# Nevada Soil Moisture Map for the Week of March 25 - 31, 2024



The Soil Moisture Active Passive (SMAP) provides measurements of soil moisture in the root zone as a weekly average, represented by pixels. Each pixel represents 9 by 9 kilometer plot or about 20,000 acres. The SMAP data measures soil moisture in cubic centimeters of water/cubic centimeters of soil. The scale represents the percent of water in a given volume of soil.