



Nevada Crop Progress & Condition

Pacific Regional Office · 650 Capitol Mall, Suite 6-100 · Sacramento, CA 95814 · (916) 738-6600 · www.nass.usda.gov/nv

Week Ending March 31, 2024

Released April 1, 2024

Weather Summary

The average low temperatures for Nevada ranged from 17 degrees in Ely to 43 degrees in Las Vegas. The average high temperatures ranged from 52 degrees in Ely and Eureka to 73 degrees in Las Vegas. Precipitation for Nevada ranged from 0.20 inches in Las Vegas, 0.22 inches in Tonopah, 0.47 inches in Winnemucca, 0.48 inches in Ely, 0.50 inches in Eureka, 1.05 inches in Reno, and 1.30 inches in Elko.

Crops Summary

Days Suitable for Fieldwork: 6.1 days. Topsoil Moisture: 5% short, 60% adequate, and 35% surplus. Subsoil Moisture: 5% short, 75% adequate, and 20% surplus. Pasture and Range Condition: 15% fair, 45% good, and 40% excellent. Snowpack and precipitation were above average for this time of year. Across the state, ground preparations were temporarily halted due to wet soil conditions. **Winter** wheat experienced good growing conditions. **Alfalfa** growth was slow due to cooler than average temperatures. Rangeland grasses were greening up well. The irrigation district began water deliveries. Cattle began moving toward spring pastures.

Weather for the Week of 3/25/2024 through 3/31/2024

Station	Temperature				Precipitation ²
	High	Low	Average	Departure from Normal ¹	
	-- Degrees Fahrenheit --				
Reno	61	29	43	-5	1.05
Elko	54	22	39	-3	1.30
Ely	52	17	35	-5	0.48
Winnemucca	55	25	41	-2	0.47
Eureka	52	23	34	-5	0.50
Tonopah	59	22	40	-6	0.22
Las Vegas	73	43	59	-5	0.20

(NA) Not available

¹ Normal periods 1990-2020 used in departure from normal calculations.

² Rain or melted snow/ice.

Data retrieved from NOAA and NWS. Calculated by USDA NASS. All rights reserved.

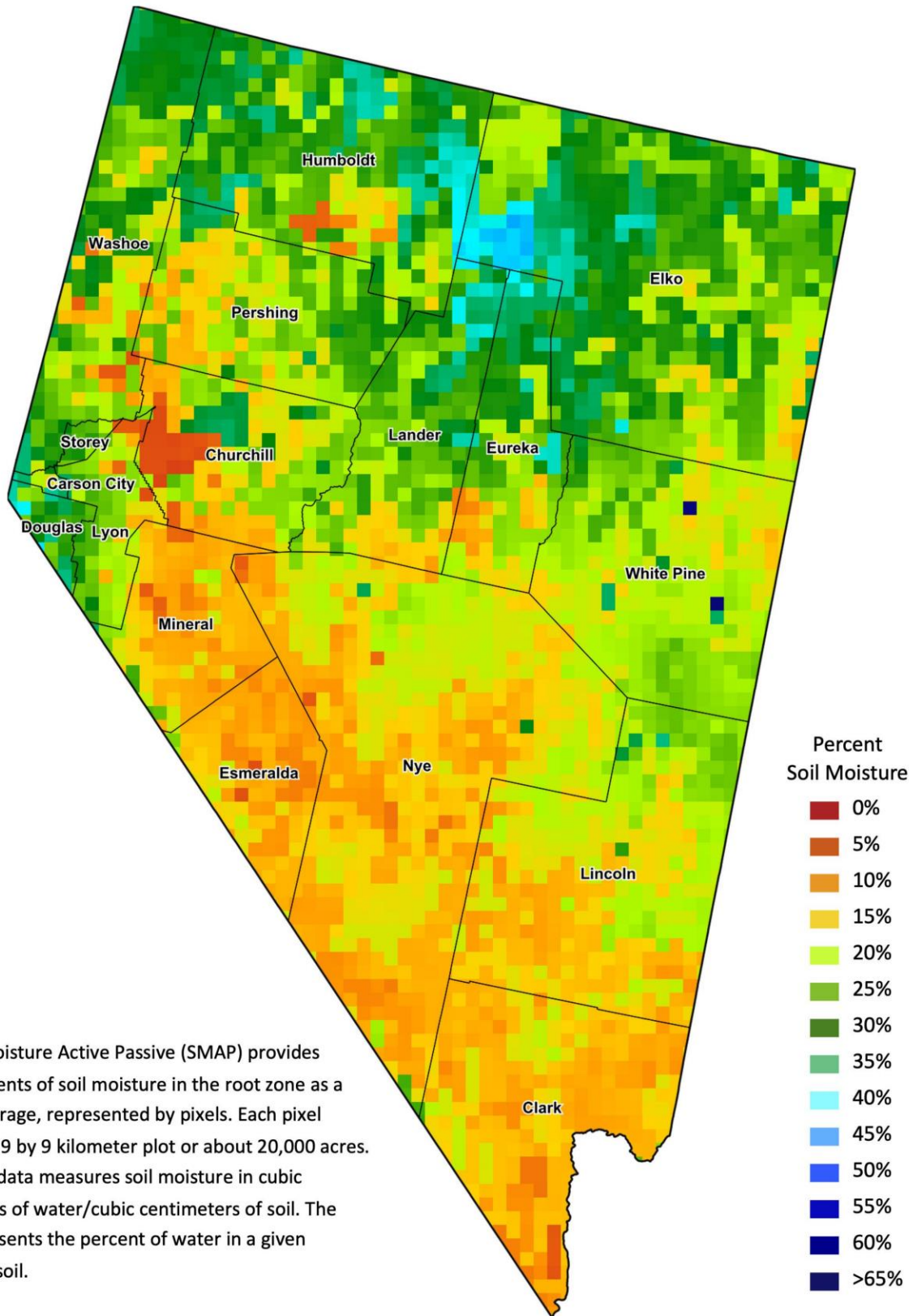
Drought Conditions from the U.S. Drought Monitor as of 3/26/2024

Time	Percent of Land in Drought Rating						Drought Severity (DSCI)
	None	D0	D1	D2	D3	D4	
Current	85.33	13.28	1.39	0.00	0.00	0.00	16
Last Week	85.33	13.28	1.39	0.00	0.00	0.00	16
3 Months Ago	94.41	3.99	1.60	0.00	0.00	0.00	7
One Year Ago	17.31	33.80	43.89	5.00	0.00	0.00	137

The U.S. Drought Monitor is jointly produced by the National Drought Mitigation Center at the University of Nebraska-Lincoln, the United States Department of Agriculture, and the National Oceanic and Atmospheric Administration.
droughtmonitor.unl.edu/CurrentMap/StateDroughtMonitor.aspx?NV



Nevada Soil Moisture Map for the Week of March 18 - 24, 2024



The Soil Moisture Active Passive (SMAP) provides measurements of soil moisture in the root zone as a weekly average, represented by pixels. Each pixel represents 9 by 9 kilometer plot or about 20,000 acres. The SMAP data measures soil moisture in cubic centimeters of water/cubic centimeters of soil. The scale represents the percent of water in a given volume of soil.