



Nevada Crop Progress & Condition

Pacific Regional Office · 650 Capitol Mall, Suite 6-100 · Sacramento, CA 95814 · (916) 738-6600 · www.nass.usda.gov/nv

Week Ending September 24, 2023

Released September 25, 2023

Weather Summary

The average low temperatures for Nevada ranged from 28 degrees in Winnemucca and Eureka to 65 degrees in Las Vegas. The average high temperatures ranged from 77 degrees in Eureka to 94 degrees in Las Vegas. Precipitation for Nevada ranged from 0.02 inches in Elko, Reno, and Tonopah, 0.03 inches in Eureka, 0.30 inches in Ely, and 0.33 inches in Las Vegas.

Crops Summary

Days Suitable for Fieldwork: 6.9 days. Topsoil Moisture: 5% very short, 10% short, 75% adequate, and 10% surplus. Subsoil Moisture: 5% very short, 15% short, 75% adequate, and 5% surplus. Pasture and Range Condition: 10% poor, 45% fair, 40% good, and 5% excellent. There was little to no precipitation during the week and conditions were very dry. The third cutting of **alfalfa** wrapped up across the state. The first frost was recorded in some areas which may prevent some growers from getting a fourth cutting. In the northern part of the state, winter **wheat** was planted and irrigated, and **potato** harvest began.

Weather for the Week of 09/18/2023 through 09/24/2023

Station	Temperature				Precipitation ²
	High	Low	Average	Departure from Normal ¹	
	-- Degrees Fahrenheit --				
Reno	86	42	64	-1	0.02
Elko	85	31	57	-1	0.02
Ely	80	29	53	-3	0.30
Winnemucca	87	28	59	-1	0.00
Eureka	77	28	55	-2	0.03
Tonopah	82	38	60	-4	0.02
Las Vegas	94	65	79	-3	0.33

(NA) Not available

¹ Normal periods 1990-2020 used in departure from normal calculations.

² Rain or melted snow/ice.

Data retrieved from NOAA and NWS. Calculated by USDA NASS. All rights reserved.

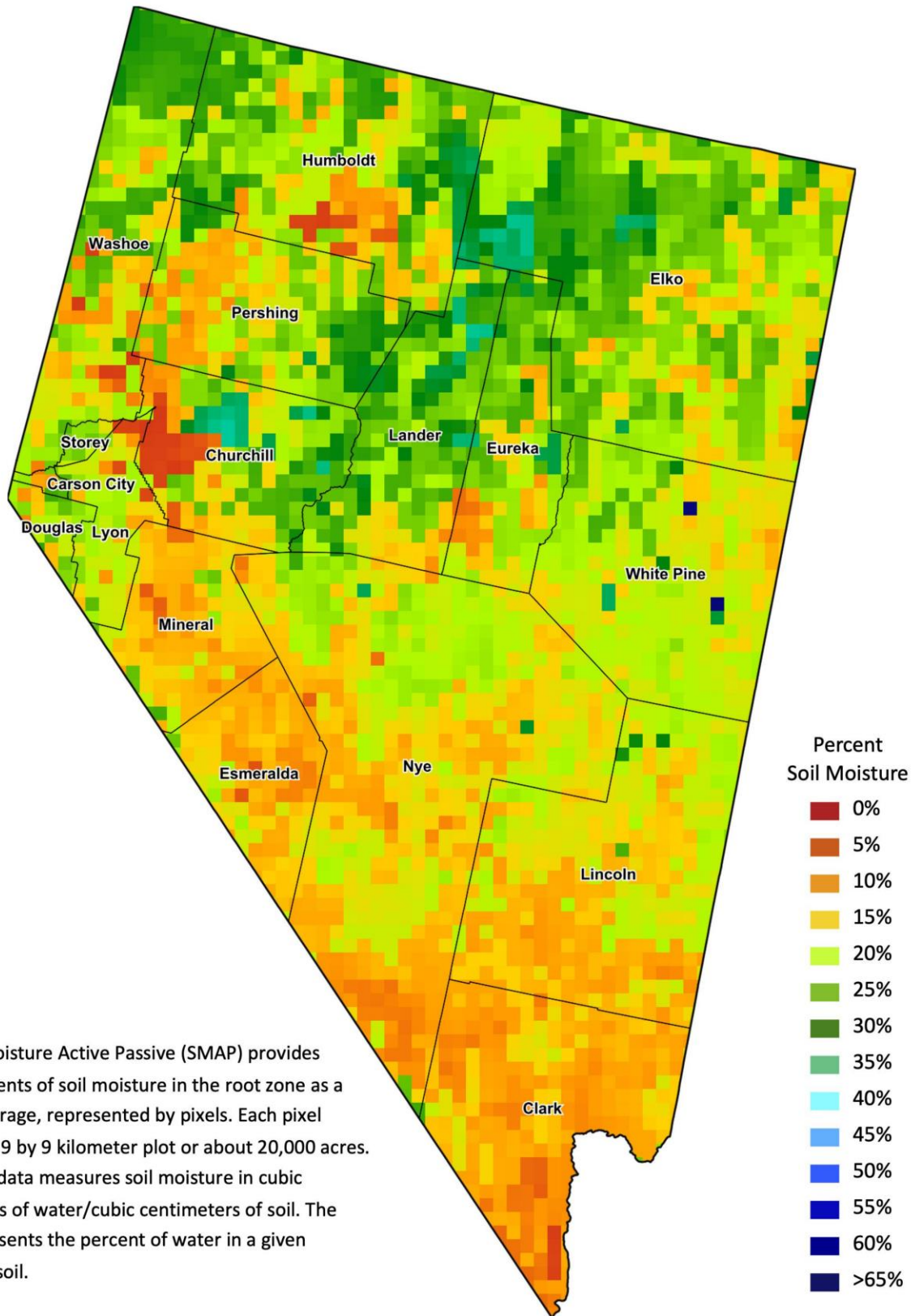
Drought Conditions from the U.S. Drought Monitor as of 09/19/2023

Time	Percent of Land in Drought Rating						Drought Severity (DSCI)
	None	D0	D1	D2	D3	D4	
Current	94.28	4.12	1.60	0.00	0.00	0.00	7
Last Week	94.30	4.10	1.60	0.00	0.00	0.00	7
3 Months Ago	65.69	15.81	15.72	2.78	0.00	0.00	56
One Year Ago	0.00	0.00	0.48	53.68	45.85	0.00	345

The U.S. Drought Monitor is jointly produced by the National Drought Mitigation Center at the University of Nebraska-Lincoln, the United States Department of Agriculture, and the National Oceanic and Atmospheric Administration.
droughtmonitor.unl.edu/CurrentMap/StateDroughtMonitor.aspx?NV



Nevada Soil Moisture Map for the Week of September 11 - 17, 2023



The Soil Moisture Active Passive (SMAP) provides measurements of soil moisture in the root zone as a weekly average, represented by pixels. Each pixel represents 9 by 9 kilometer plot or about 20,000 acres. The SMAP data measures soil moisture in cubic centimeters of water/cubic centimeters of soil. The scale represents the percent of water in a given volume of soil.