



Nevada Crop Progress & Condition

Pacific Regional Office · 650 Capitol Mall, Suite 6-100 · Sacramento, CA 95814 · (916) 738-6600 · www.nass.usda.gov/nv

Week Ending September 17, 2023

Released September 18, 2023

Weather Summary

The average low temperatures for Nevada ranged from 37 degrees in Ely to 72 degrees in Las Vegas. The average high temperatures ranged from 78 degrees in Ely and Eureka to 98 degrees in Las Vegas. Precipitation for Nevada ranged from 0.03 inches in Eureka to 0.09 inches in Ely.

Crops Summary

Days Suitable for Fieldwork: 7.0 days. Topsoil Moisture: 5% very short, 10% short, 80% adequate, and 5% surplus. Subsoil Moisture: 5% very short, 15% short, and 80% adequate. Pasture and Range Condition: 10% poor, 40% fair, 45% good, and 5% excellent. There was little to no precipitation during the week and conditions were very dry. The third cutting of **alfalfa** began in the central part of the state and wrapped up in the northern part of the state. Some growers will not do a fourth cutting this year. In the northern part of the state, field preparations began for seeding winter **wheat** and **potato** growers prepared for harvest.

Weather for the Week of 09/11/2023 through 09/17/2023

Station	Temperature				Precipitation ²
	High	Low	Average	Departure from Normal ¹	
	-- Degrees Fahrenheit --				
Reno	89	51	71	3	0.00
Elko	87	42	64	3	0.00
Ely	78	37	59	0	0.09
Winnemucca	87	41	65	2	0.00
Eureka	78	43	60	0	0.03
Tonopah	N/A	N/A	N/A	N/A	N/A
Las Vegas	98	72	84	0	0.00

(NA) Not available

¹ Normal periods 1990-2020 used in departure from normal calculations.

² Rain or melted snow/ice.

Data retrieved from NOAA and NWS. Calculated by USDA NASS. All rights reserved.

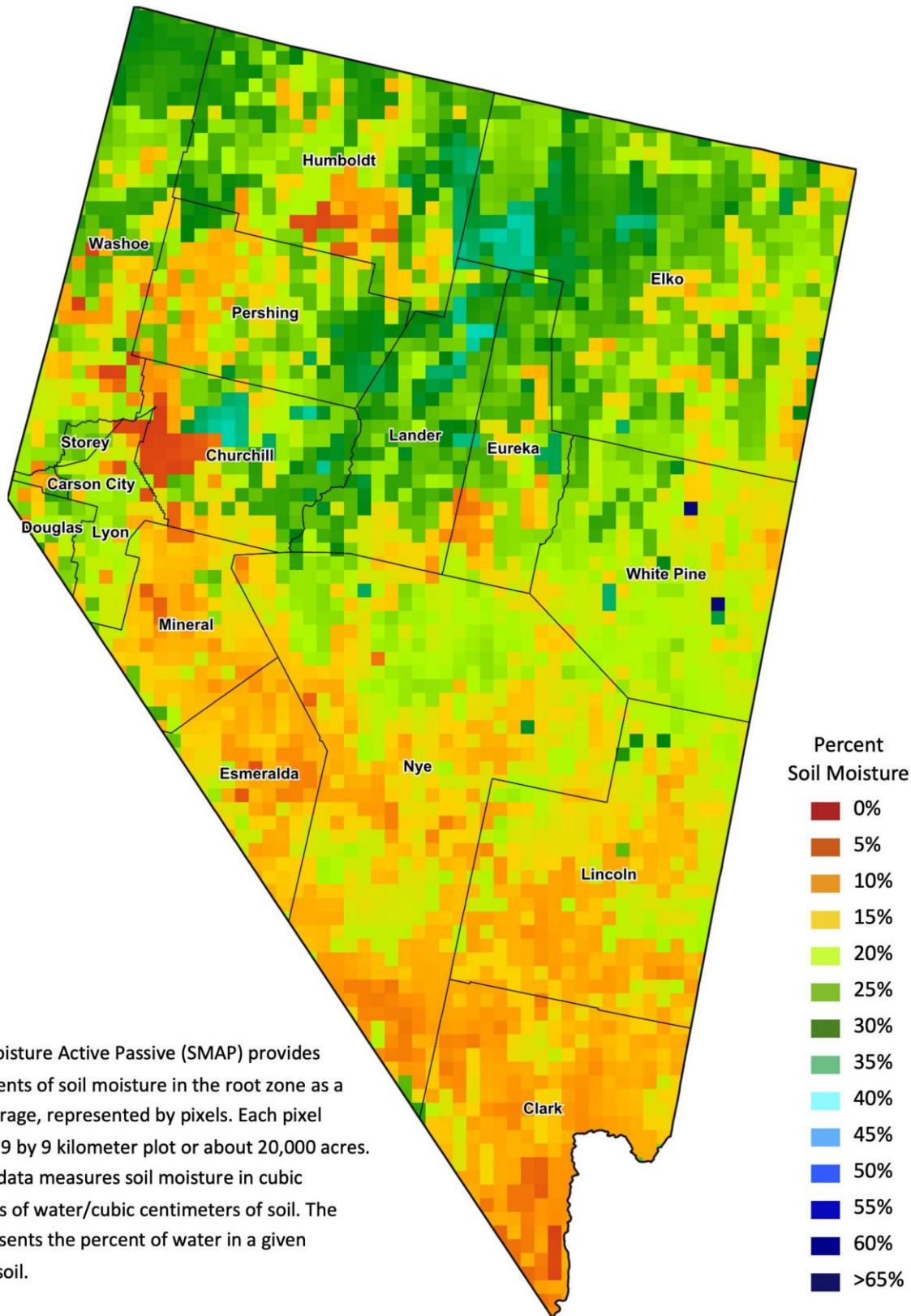
Drought Conditions from the U.S. Drought Monitor as of 09/12/2023

Time	Percent of Land in Drought Rating						Drought Severity (DSCI)
	None	D0	D1	D2	D3	D4	
Current	94.30	4.10	1.60	0.00	0.00	0.00	7
Last Week	94.30	4.10	1.60	0.00	0.00	0.00	7
3 Months Ago	65.69	14.18	17.35	2.78	0.00	0.00	57
One Year Ago	0.00	0.00	0.48	53.68	45.85	0.00	345

The U.S. Drought Monitor is jointly produced by the National Drought Mitigation Center at the University of Nebraska-Lincoln, the United States Department of Agriculture, and the National Oceanic and Atmospheric Administration.
droughtmonitor.unl.edu/CurrentMap/StateDroughtMonitor.aspx?NV



Nevada Soil Moisture Map for the Week of September 4 - 10, 2023



The Soil Moisture Active Passive (SMAP) provides measurements of soil moisture in the root zone as a weekly average, represented by pixels. Each pixel represents 9 by 9 kilometer plot or about 20,000 acres. The SMAP data measures soil moisture in cubic centimeters of water/cubic centimeters of soil. The scale represents the percent of water in a given volume of soil.