



Nevada Crop Progress & Condition

Pacific Regional Office · 650 Capitol Mall, Suite 6-100 · Sacramento, CA 95814 · (916) 738-6600 · www.nass.usda.gov/nv

Week Ending September 10, 2023

Released September 11, 2023

Weather Summary

The average low temperatures for Nevada ranged from 38 degrees in Ely to 68 degrees in Las Vegas. The average high temperatures ranged from 81 degrees in Ely and Eureka to 103 degrees in Las Vegas. Precipitation for Nevada ranged from 0.02 inches in Ely, 0.06 inches in Elko and Eureka, and 0.89 inches in Winnemucca.

Crops Summary

Days Suitable for Fieldwork: 6.7 days. Topsoil Moisture: 10% very short, 10% short, 70% adequate, and 10% surplus. Subsoil Moisture: 5% very short, 10% short, 80% adequate, and 5% surplus. Pasture and Range Condition: 5% very poor, 10% poor, 50% fair, 30% good, and 5% excellent. There was little to no precipitation during the week. **Corn** continued to develop with silks drying and turning brown. The third cutting of **alfalfa** began in the central part of the state and wrapped up in the northern part of the state.

Weather for the Week of 09/04/2023 through 09/10/2023

Station	Temperature				Precipitation ²
	High	Low	Average	Departure from Normal ¹	
	-- Degrees Fahrenheit --				
Reno	88	47	69	-1	0.00
Elko	86	43	64	0	0.06
Ely	81	38	60	-2	0.02
Winnemucca	88	44	62	-3	0.89
Eureka	81	42	60	-3	0.06
Tonopah	N/A	N/A	N/A	N/A	N/A
Las Vegas	103	68	85	-2	0.00

(NA) Not available

¹ Normal periods 1990-2020 used in departure from normal calculations.

² Rain or melted snow/ice.

Data retrieved from NOAA and NWS. Calculated by USDA NASS. All rights reserved.

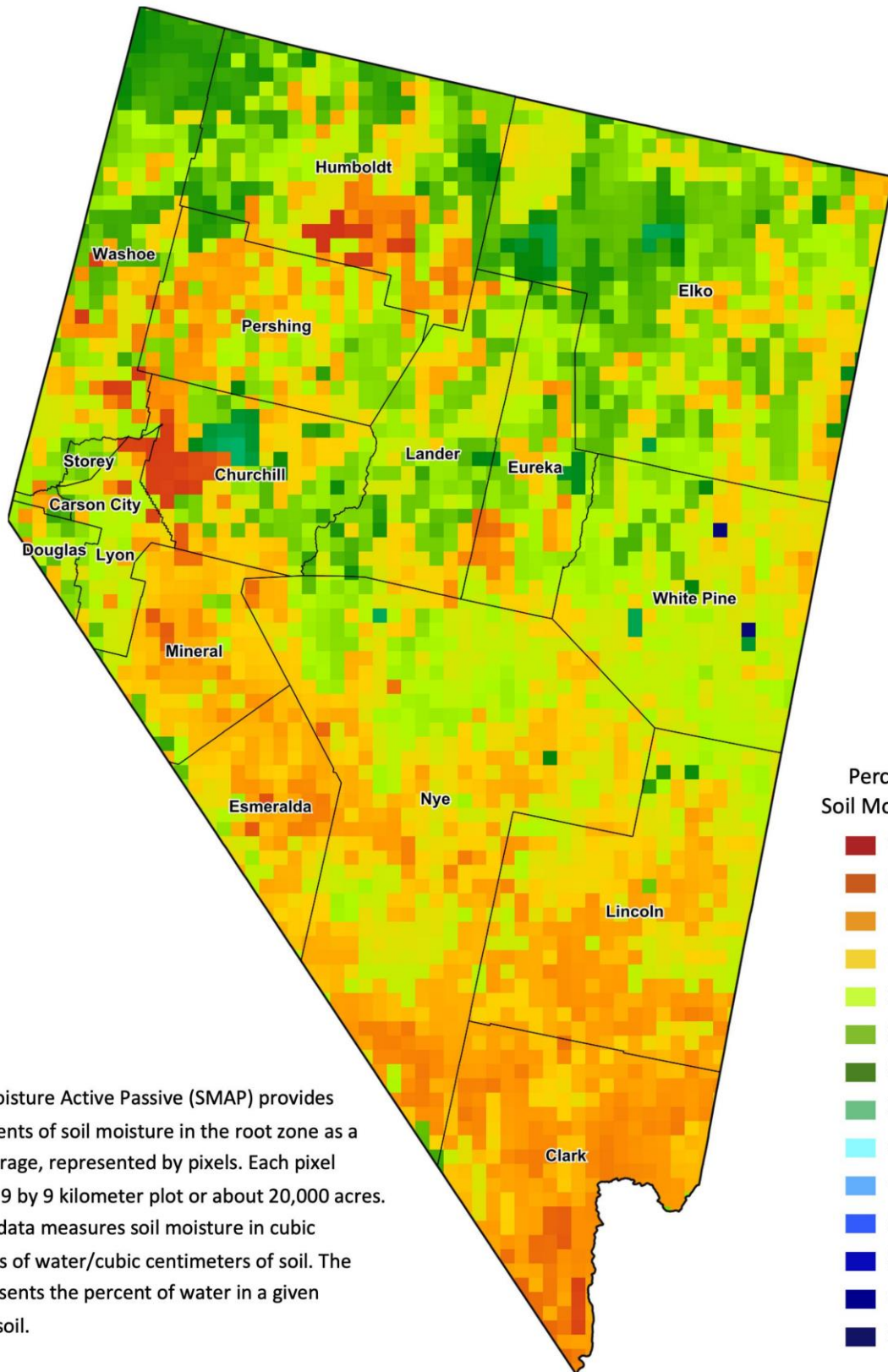
Drought Conditions from the U.S. Drought Monitor as of 09/05/2023

Time	Percent of Land in Drought Rating						Drought Severity (DSCI)
	None	D0	D1	D2	D3	D4	
Current	94.30	4.10	1.60	0.00	0.00	0.00	7
Last Week	94.36	2.37	3.27	0.00	0.00	0.00	9
3 Months Ago	43.50	36.37	17.35	2.78	0.00	0.00	79
One Year Ago	0.00	0.00	0.48	47.32	52.21	0.00	352

The U.S. Drought Monitor is jointly produced by the National Drought Mitigation Center at the University of Nebraska-Lincoln, the United States Department of Agriculture, and the National Oceanic and Atmospheric Administration.
droughtmonitor.unl.edu/CurrentMap/StateDroughtMonitor.aspx?NV



Nevada Soil Moisture Map for the Week of August 28 - September 3, 2023



The Soil Moisture Active Passive (SMAP) provides measurements of soil moisture in the root zone as a weekly average, represented by pixels. Each pixel represents 9 by 9 kilometer plot or about 20,000 acres. The SMAP data measures soil moisture in cubic centimeters of water/cubic centimeters of soil. The scale represents the percent of water in a given volume of soil.