



Nevada Crop Progress & Condition

Pacific Regional Office · 650 Capitol Mall, Suite 6-100 · Sacramento, CA 95814 · (916) 738-6600 · www.nass.usda.gov/nv

Week Ending July 2, 2023

Released July 3, 2023

Weather Summary

The average low temperatures for Nevada ranged from 38 degrees in Ely to 73 degrees in Las Vegas. The average high temperatures ranged from 90 degrees in Ely to 111 degrees in Las Vegas. Precipitation for Nevada ranged from 0.03 inches in Ely and 0.05 inches in Eureka.

Crops Summary

Days Suitable for Fieldwork: 7.0 days. Topsoil Moisture: 15% short, 80% adequate, and 5% surplus. Subsoil Moisture: 15% short and 85% adequate. Pasture and Range Condition: 40% fair, 35% good, and 25% excellent. Due to rain in Western and Northern Nevada over the past several weeks, the first cutting of alfalfa was damaged. In Central Nevada, grass hay was harvested.

Weather for the Week of 06/26/2023 through 07/02/2023

| Station | Temperature | | | | Precipitation ² |
|------------|--------------------------|-----|---------|------------------------------------|----------------------------|
| | High | Low | Average | Departure from Normal ¹ | |
| | -- Degrees Fahrenheit -- | | | | |
| Reno | 99 | 52 | 73 | -1 | 0.00 |
| Elko | 95 | 45 | 67 | -1 | 0.00 |
| Ely | 90 | 38 | 61 | -5 | 0.03 |
| Winnemucca | 100 | 39 | 69 | -1 | 0.00 |
| Eureka | 94 | 40 | 63 | -2 | 0.05 |
| Tonopah | 96 | 48 | 72 | -1 | 0.00 |
| Las Vegas | 111 | 73 | 90 | -1 | 0.00 |

(NA) Not available

¹ Normal periods 1990-2020 used in departure from normal calculations.

² Rain or melted snow/ice.

Data retrieved from NOAA and NWS. Calculated by USDA NASS. All rights reserved.

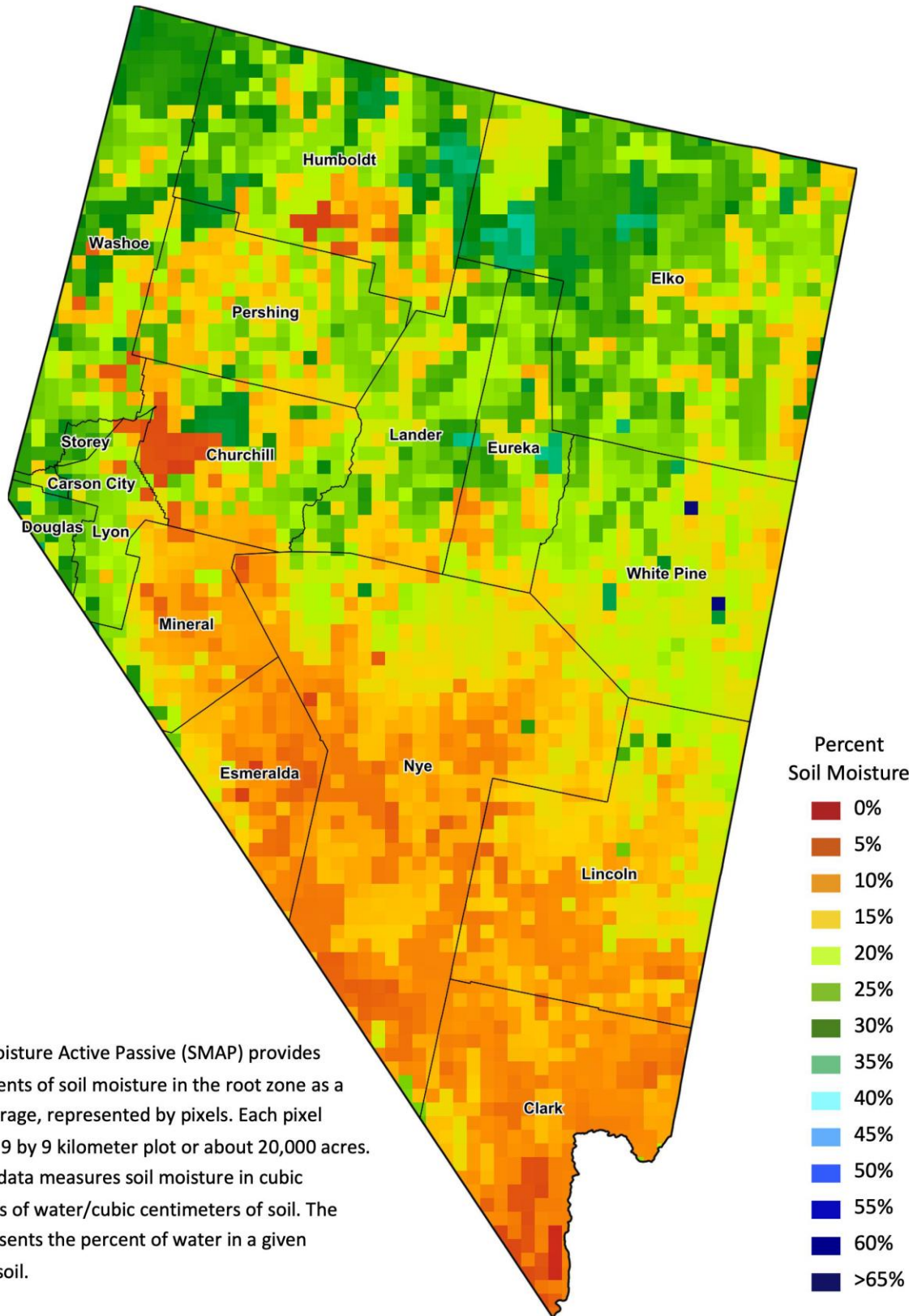
Drought Conditions from the U.S. Drought Monitor as of 06/27/2023

| Time | Percent of Land in Drought Rating | | | | | | Drought Severity (DSCI) |
|--------------|-----------------------------------|-------|-------|-------|-------|-------|-------------------------|
| | None | D0 | D1 | D2 | D3 | D4 | |
| Current | 65.69 | 15.81 | 15.72 | 2.78 | 0.00 | 0.00 | 56 |
| Last Week | 65.69 | 15.81 | 15.72 | 2.78 | 0.00 | 0.00 | 56 |
| 3 Months Ago | 17.31 | 33.80 | 43.89 | 5.00 | 0.00 | 0.00 | 137 |
| One Year Ago | 0.00 | 0.00 | 0.48 | 40.98 | 37.23 | 21.32 | 379 |

The U.S. Drought Monitor is jointly produced by the National Drought Mitigation Center at the University of Nebraska-Lincoln, the United States Department of Agriculture, and the National Oceanic and Atmospheric Administration.
droughtmonitor.unl.edu/CurrentMap/StateDroughtMonitor.aspx?NV



Nevada Soil Moisture Map for the Week of June 19 - 25, 2023



The Soil Moisture Active Passive (SMAP) provides measurements of soil moisture in the root zone as a weekly average, represented by pixels. Each pixel represents 9 by 9 kilometer plot or about 20,000 acres. The SMAP data measures soil moisture in cubic centimeters of water/cubic centimeters of soil. The scale represents the percent of water in a given volume of soil.