



Nevada Crop Progress & Condition

Pacific Regional Office · 650 Capitol Mall, Suite 6-100 · Sacramento, CA 95814 · (916) 738-6600 · www.nass.usda.gov/nv

Week Ending June 11, 2023

Released June 12, 2023

Weather Summary

The average low temperatures for Nevada ranged from 36 degrees in Ely to 66 degrees in Las Vegas. The average high temperatures ranged from 72 degrees in Eureka to 98 degrees in Las Vegas. Precipitation for Nevada ranged from 0.12 inches in Winnemucca, 0.16 inches in Elko, 0.26 inches in Eureka, 0.37 inches in Ely, and 0.44 inches in Reno.

Crops Summary

Days Suitable for Fieldwork: 6.3 days. Topsoil Moisture: 85% adequate, and 15% surplus. Subsoil Moisture: 15% short and 85% adequate. Pasture and Range Condition: 5% poor, 35% fair, 40% good, and 20% excellent. Daily thunderstorms produced heavy rains. **Alfalfa** harvest continued with delays in some areas due to rain. Many farmers were waiting for the rain to pass before beginning harvest. Generally, crops were benefitting from the below-average temperatures. Cattle were moving on to early summer range.

Weather for the Week of 6/05/2023 through 6/11/2023

Station	Temperature				Precipitation ²
	High	Low	Average	Departure from Normal ¹	
	-- Degrees Fahrenheit --				
Reno	84	49	67	0	0.44
Elko	81	43	62	1	0.16
Ely	77	36	54	-5	0.37
Winnemucca	82	43	63	1	0.12
Eureka	72	39	55	-3	0.26
Tonopah	82	43	63	-4	0.00
Las Vegas	98	66	81	-4	0.00

(NA) Not available

¹ Normal periods 1990-2020 used in departure from normal calculations.

² Rain or melted snow/ice.

Data retrieved from NOAA and NWS. Calculated by USDA NASS. All rights reserved.

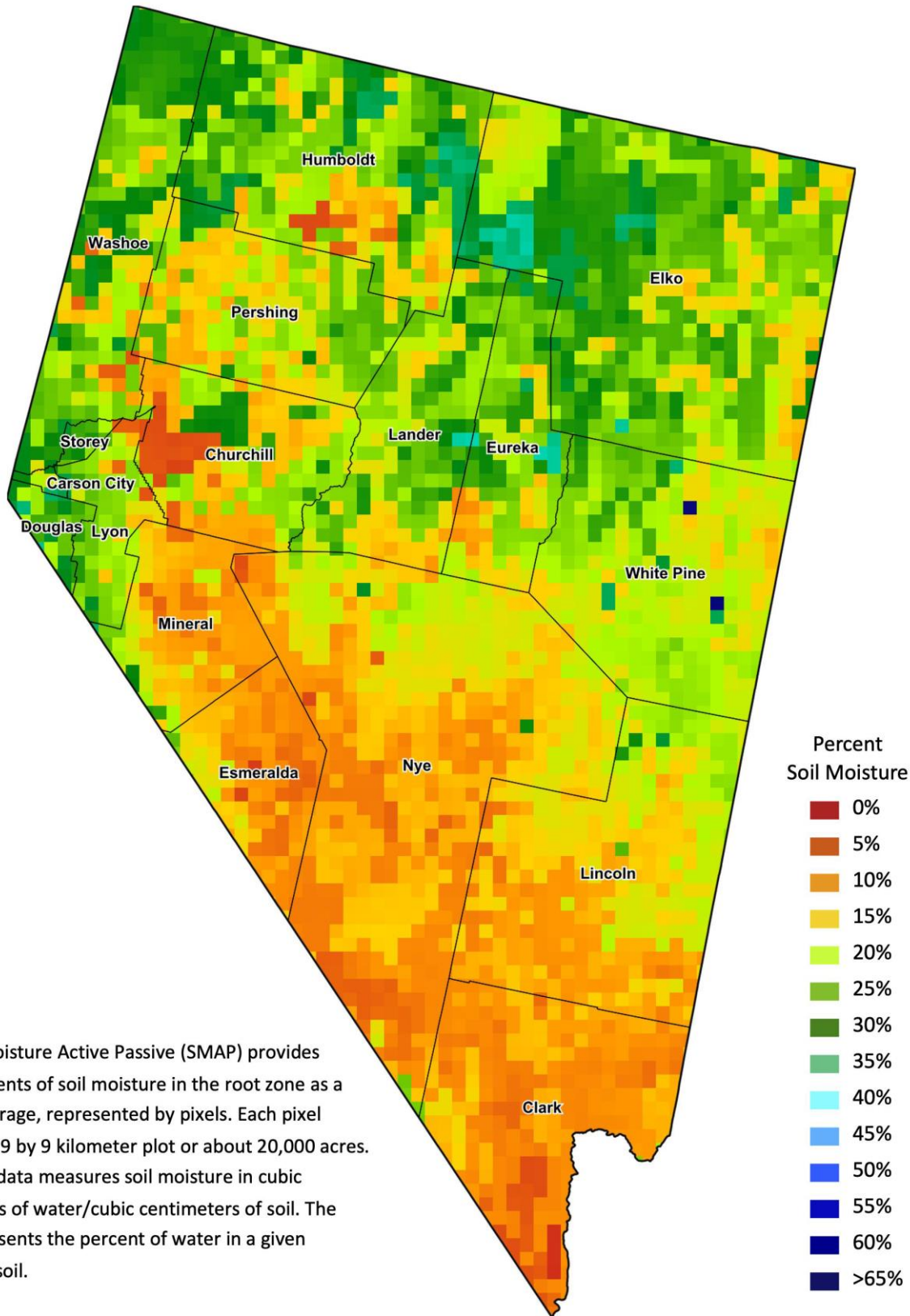
Drought Conditions from the U.S. Drought Monitor

Time	Percent of Land in Drought Rating						Drought Severity (DSCI)
	None	D0	D1	D2	D3	D4	
Current	43.50	36.37	17.35	2.78	0.00	0.00	79
Last Week	33.98	45.89	17.35	2.78	0.00	0.00	89
3 Months Ago	0.00	16.51	29.09	54.40	0.00	0.00	238
One Year Ago	0.00	0.00	0.48	44.17	34.04	21.32	376

The U.S. Drought Monitor is jointly produced by the National Drought Mitigation Center at the University of Nebraska-Lincoln, the United States Department of Agriculture, and the National Oceanic and Atmospheric Administration.
droughtmonitor.unl.edu/CurrentMap/StateDroughtMonitor.aspx?NV



Nevada Soil Moisture Map for the week of May 29 - June 4, 2023



The Soil Moisture Active Passive (SMAP) provides measurements of soil moisture in the root zone as a weekly average, represented by pixels. Each pixel represents 9 by 9 kilometer plot or about 20,000 acres. The SMAP data measures soil moisture in cubic centimeters of water/cubic centimeters of soil. The scale represents the percent of water in a given volume of soil.