



Nevada Crop Progress & Condition

Pacific Regional Office · 650 Capitol Mall, Suite 6-100 · Sacramento, CA 95814 · (916) 738-6600 · www.nass.usda.gov/nv

Week Ending May 14, 2023

Released May 15, 2023

Weather Summary

The average lows for Nevada ranged from 27 degrees in Winnemucca to 61 degrees in Las Vegas. The average highs ranged from 67 degrees in Ely to 94 degrees in Las Vegas. Precipitation for Nevada ranged from 0.03 inches in Winnemucca, 0.07 inches in Eureka, 0.08 inches in Reno, 0.12 inches in Ely, and 0.14 inches in Elko.

Crops Summary

Days Suitable for Fieldwork: 7.0 days. Topsoil Moisture: 15% short, 70% adequate, and 15% surplus. Subsoil Moisture: 15% short, 80% adequate, and 5% surplus. Pasture and Range Condition: 20% poor, 35% fair, 40% good, and 5% excellent. Warm temperatures continued to promote rapid growth in **alfalfa** and other crops. Winter grains were harvested for silage or hay. Fields were prepped for **corn** planting.

Weather for the Week of 5/8/2023 through 5/14/2023

Station	Temperature				Precipitation ²
	High	Low	Average	Departure from Normal ¹	
	-- Degrees Fahrenheit --				
Reno	80	36	58	-1	0.08
Elko	72	30	52	-1	0.14
Ely	67	29	47	-3	0.12
Winnemucca	78	27	53	-1	0.03
Eureka	69	28	48	-1	0.07
Tonopah	N/A	N/A	N/A	N/A	N/A
Las Vegas	94	61	77	2	0.00

(NA) Not available

¹ Normal periods 1990-2020 used in departure from normal calculations.

² Rain or melted snow/ice.

Data retrieved from NOAA and NWS. Calculated by USDA NASS. All rights reserved.

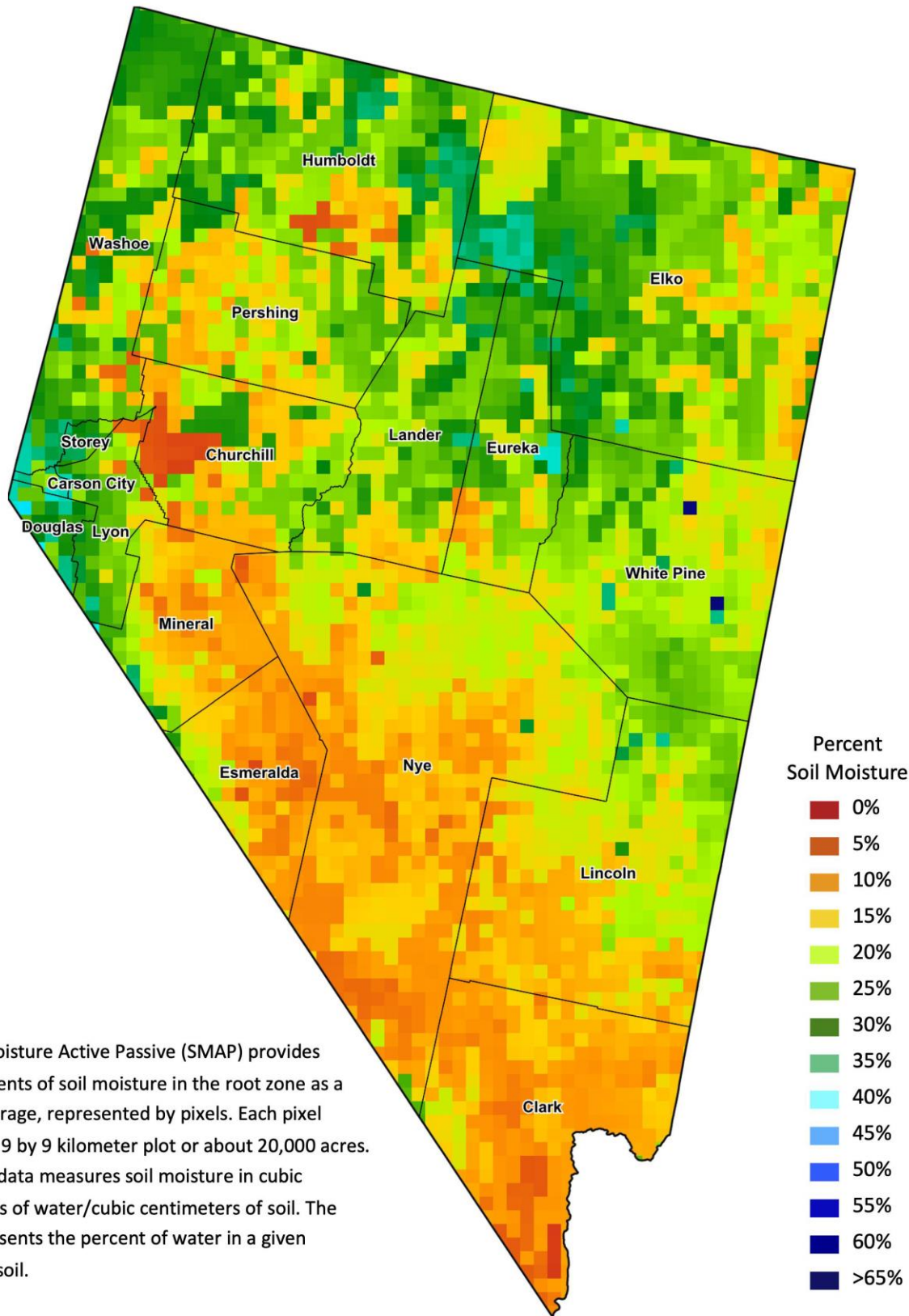
Drought Conditions from the U.S. Drought Monitor

Time	Percent of Land in Drought Rating						Drought Severity (DSCI)
	None	D0	D1	D2	D3	D4	
Current	33.42	44.48	19.33	2.78	0.00	0.00	91
Last Week	33.42	44.48	19.33	2.78	0.00	0.00	91
3 Months Ago	0.00	12.60	28.52	48.41	10.47	0.00	257
One Year Ago	0.00	0.00	0.00	45.13	46.61	8.27	363

The U.S. Drought Monitor is jointly produced by the National Drought Mitigation Center at the University of Nebraska-Lincoln, the United States Department of Agriculture, and the National Oceanic and Atmospheric Administration.
droughtmonitor.unl.edu/CurrentMap/StateDroughtMonitor.aspx?NV



Nevada Soil Moisture Map for the Week of May 1 - 7, 2023



The Soil Moisture Active Passive (SMAP) provides measurements of soil moisture in the root zone as a weekly average, represented by pixels. Each pixel represents 9 by 9 kilometer plot or about 20,000 acres. The SMAP data measures soil moisture in cubic centimeters of water/cubic centimeters of soil. The scale represents the percent of water in a given volume of soil.