



# Nevada Crop Progress & Condition

Pacific Regional Office · 650 Capitol Mall, Suite 6-100 · Sacramento, CA 95814 · (916) 738-6600 · [www.nass.usda.gov/nv](http://www.nass.usda.gov/nv)

Week Ending April 23, 2023

Released April 24, 2023

## Weather Summary

The average lows for Nevada ranged from 15 degrees in Winnemucca to 52 degrees in Las Vegas. The average highs ranged from 64 degrees in Elko and Ely to 88 degrees in Las Vegas. Precipitation for Nevada ranged from 0.04 inches in Elko, Ely, and Eureka to 0.09 in Reno and Winnemucca.

## Crops Summary

Days Suitable for Fieldwork: 6.9 days. Topsoil Moisture: 5% very short, 10% short, 60% adequate, and 25% surplus. Subsoil Moisture: 5% short, 90% adequate, and 5% surplus. Pasture and Range Condition: 15% Poor, 40% Fair, 30% Good, and 15% Excellent. Weather was mostly cold and windy in the beginning of the week and got warmer as the week progressed. **Alfalfa, wheat** and pasture growth picked up with the warmer weather. Crop development was delayed due to cold and wet weather conditions experienced earlier this year. Small grain and alfalfa fields were irrigated. Cattle were in good condition due to improved grazing opportunities.

## Weather for the Week of 4/17/2023 through 4/23/2023

Station	Temperature				Precipitation <sup>2</sup>
	High	Low	Average	Departure from Normal <sup>1</sup>	
	-- Degrees Fahrenheit --				
Reno	72	27	50	-2	0.09
Elko	64	16	42	-4	0.04
Ely	64	18	40	-4	0.04
Winnemucca	72	15	46	-2	0.09
Eureka	65	16	41	-1	0.04
Tonopah	70	24	49	-2	0.00
Las Vegas	88	52	70	1	0.00

(NA) Not available

<sup>1</sup> Normal periods 1990-2020 used in departure from normal calculations.

<sup>2</sup> Rain or melted snow/ice.

Data retrieved from NOAA and NWS. Calculated by USDA NASS. All rights reserved.

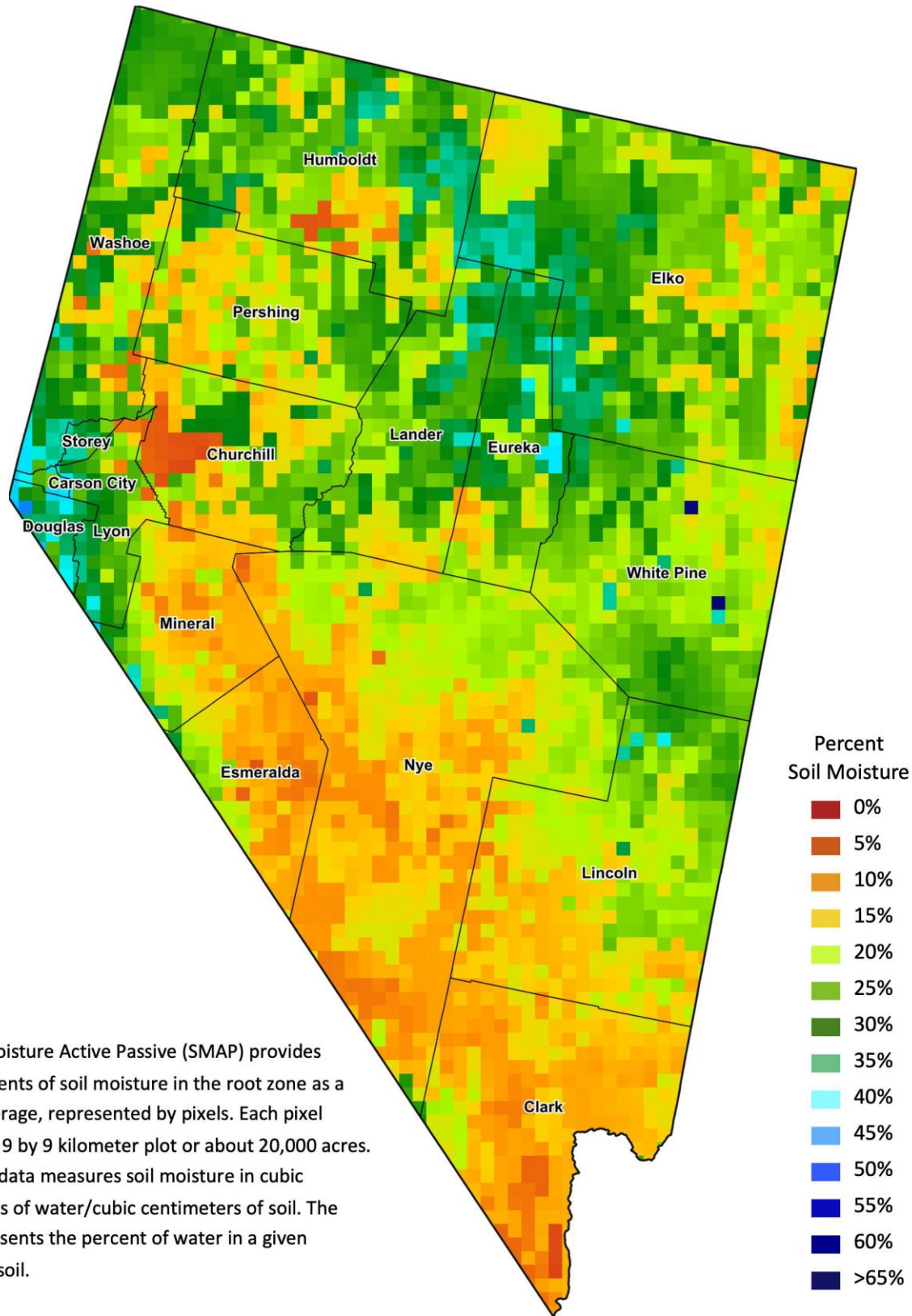
## Drought Conditions from the U.S. Drought Monitor

Time	Percent of Land in Drought Rating						Drought Severity (DSCI)
	None	D0	D1	D2	D3	D4	
Current	33.26	43.81	20.15	2.78	0.00	0.00	92
Last Week	33.26	43.45	20.50	2.78	0.00	0.00	93
3 Months Ago	0.00	0.00	24.69	51.30	24.00	0.00	299
One Year Ago	0.00	0.00	0.00	51.10	41.40	7.50	356

The U.S. Drought Monitor is jointly produced by the National Drought Mitigation Center at the University of Nebraska-Lincoln, the United States Department of Agriculture, and the National Oceanic and Atmospheric Administration.  
[droughtmonitor.unl.edu/CurrentMap/StateDroughtMonitor.aspx?NV](http://droughtmonitor.unl.edu/CurrentMap/StateDroughtMonitor.aspx?NV)



# Nevada Soil Moisture Map for the Week of April 10 - 16, 2023



The Soil Moisture Active Passive (SMAP) provides measurements of soil moisture in the root zone as a weekly average, represented by pixels. Each pixel represents 9 by 9 kilometer plot or about 20,000 acres. The SMAP data measures soil moisture in cubic centimeters of water/cubic centimeters of soil. The scale represents the percent of water in a given volume of soil.