



Nevada Crop Progress & Condition

Pacific Regional Office · 650 Capitol Mall, Suite 6-100 · Sacramento, CA 95814 · (916) 738-6600 · www.nass.usda.gov/nv

Week Ending April 16, 2023

Released April 17, 2023

Weather Summary

The average lows for Nevada ranged from 19 degrees in Winnemucca to 56 degrees in Las Vegas. The average highs ranged from 69 degrees in Eureka to 93 degrees in Las Vegas. No precipitation was observed at any of the reporting stations in Nevada.

Crops Summary

Days Suitable for Fieldwork: 6.8 days. Topsoil Moisture: 5% short, 65% adequate, and 30% surplus. Subsoil Moisture: 5% short, 90% adequate, and 5% surplus. Pasture and Range Condition: 15% Poor, 40% Fair, 30% Good, and 15% Excellent. Warmer weather in the first part of the week benefited **alfalfa** and pasture growth, but was still behind for the year. Field preparation continued for planting spring grains, **corn** silage, and **potatoes**. Scour damage due to high winds was noted in winter **wheat** growing on sandy soil. Range cattle remained in mostly good condition as pastures improved. Turnout of ranch cattle progressed slowly due to lingering snow in some areas.

Weather for the Week of 4/10/2023 through 4/16/2023

Station	Temperature				Precipitation ²
	High	Low	Average	Departure from Normal ¹	
	-- Degrees Fahrenheit --				
Reno	79	30	53	2	0.00
Elko	76	22	47	2	0.00
Ely	72	20	45	2	0.00
Winnemucca	78	19	48	2	0.00
Eureka	69	20	45	4	0.00
Tonopah	78	30	52	3	0.00
Las Vegas	93	56	72	5	0.00

(NA) Not available

¹ Normal periods 1990-2020 used in departure from normal calculations.

² Rain or melted snow/ice.

Data retrieved from NOAA and NWS. Calculated by USDA NASS. All rights reserved.

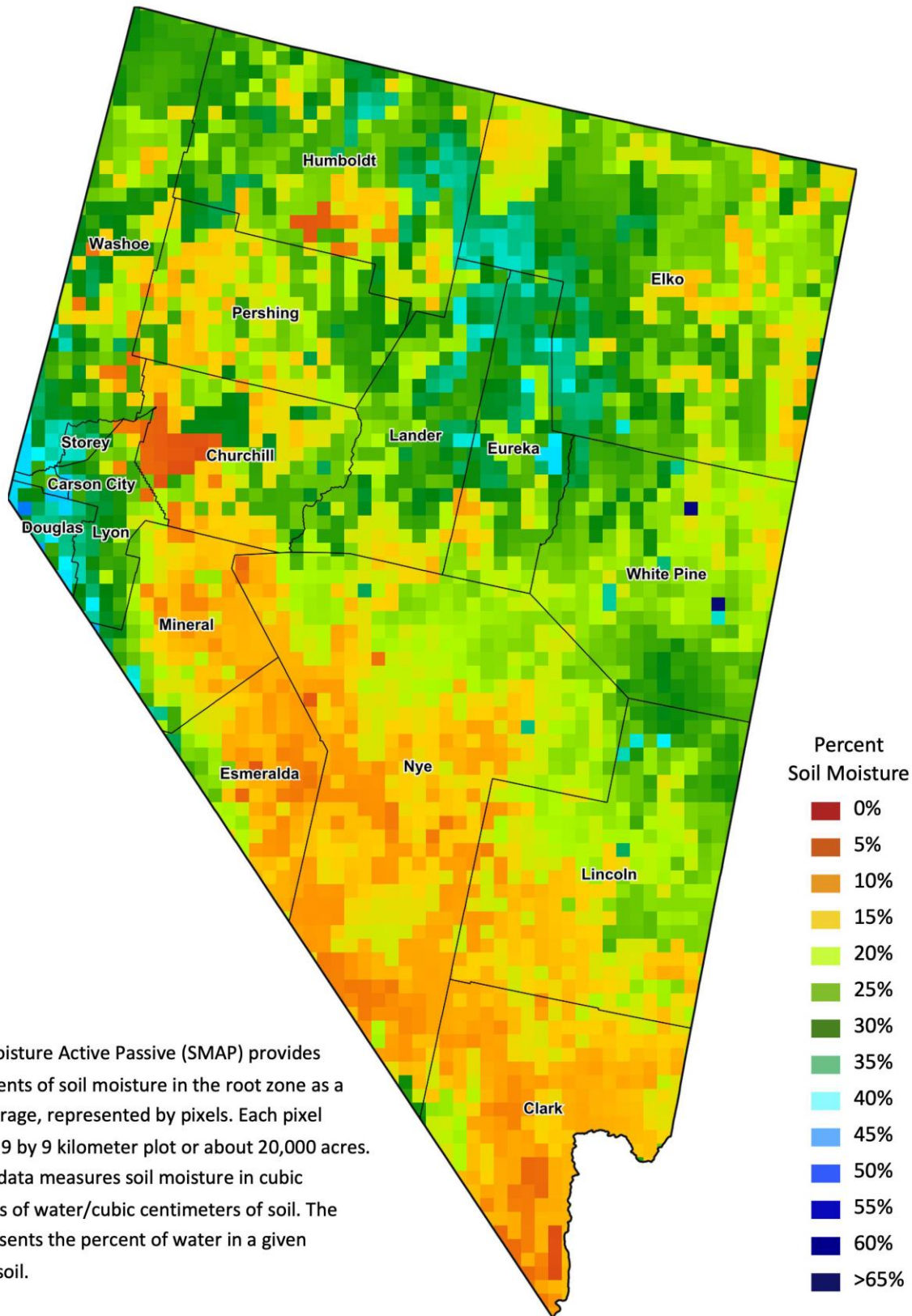
Drought Conditions from the U.S. Drought Monitor

Time	Percent of Land in Drought Rating						Drought Severity (DSCI)
	None	D0	D1	D2	D3	D4	
Current	33.26	43.45	20.50	2.78	0.00	0.00	93
Last Week	21.51	54.05	21.02	3.43	0.00	0.00	106
3 Months Ago	0.00	0.00	24.32	51.23	24.45	0.00	300
One Year Ago	0.00	0.00	0.00	51.19	41.32	7.50	356

The U.S. Drought Monitor is jointly produced by the National Drought Mitigation Center at the University of Nebraska-Lincoln, the United States Department of Agriculture, and the National Oceanic and Atmospheric Administration.
droughtmonitor.unl.edu/CurrentMap/StateDroughtMonitor.aspx?NV



Nevada Soil Moisture Map for the Week of April 3 - 9, 2023



The Soil Moisture Active Passive (SMAP) provides measurements of soil moisture in the root zone as a weekly average, represented by pixels. Each pixel represents 9 by 9 kilometer plot or about 20,000 acres. The SMAP data measures soil moisture in cubic centimeters of water/cubic centimeters of soil. The scale represents the percent of water in a given volume of soil.