



Nevada Crop Progress & Condition

Pacific Regional Office · 650 Capitol Mall 6-100 · Sacramento, CA 95812-1258 · (916) 738-6600 · www.nass.usda.gov/nv

Week Ending November 21, 2021

Released November 22, 2021

Weather Summary

The average lows for Nevada ranged from 12 degrees in Ely to 46 degrees in Las Vegas. The average highs ranged from 56 degrees in Elko to 76 degrees in Las Vegas. Precipitation for Nevada ranged from 0.01 inches in Ely, 0.03 inches in Elko, and 0.07 inches in Eureka.

Crops Summary

Days Suitable for Fieldwork: 6.3 days. Topsoil Moisture: 5% very short, 15% short, and 80% adequate. Subsoil Moisture: 25% very short, 35% short, and 40% adequate. Pasture and Range Condition: 20% Very Poor, 30% Poor, 45% Fair, and 5% Good.

Week of 11/15/2021 through 11/21/2021

Station	Temperature				Precipitation ²
	High	Low	Average	Departure from Normal ¹	
Reno	71	28	48	6	0.00
Elko	56	16	37	3	0.03
Ely	67	12	38	5	0.01
Winnemucca	65	19	41	4	0.00
Eureka	63	12	39	5	0.07
Tonopah	64	27	46	7	0.00
Las Vegas	76	46	62	7	0.00

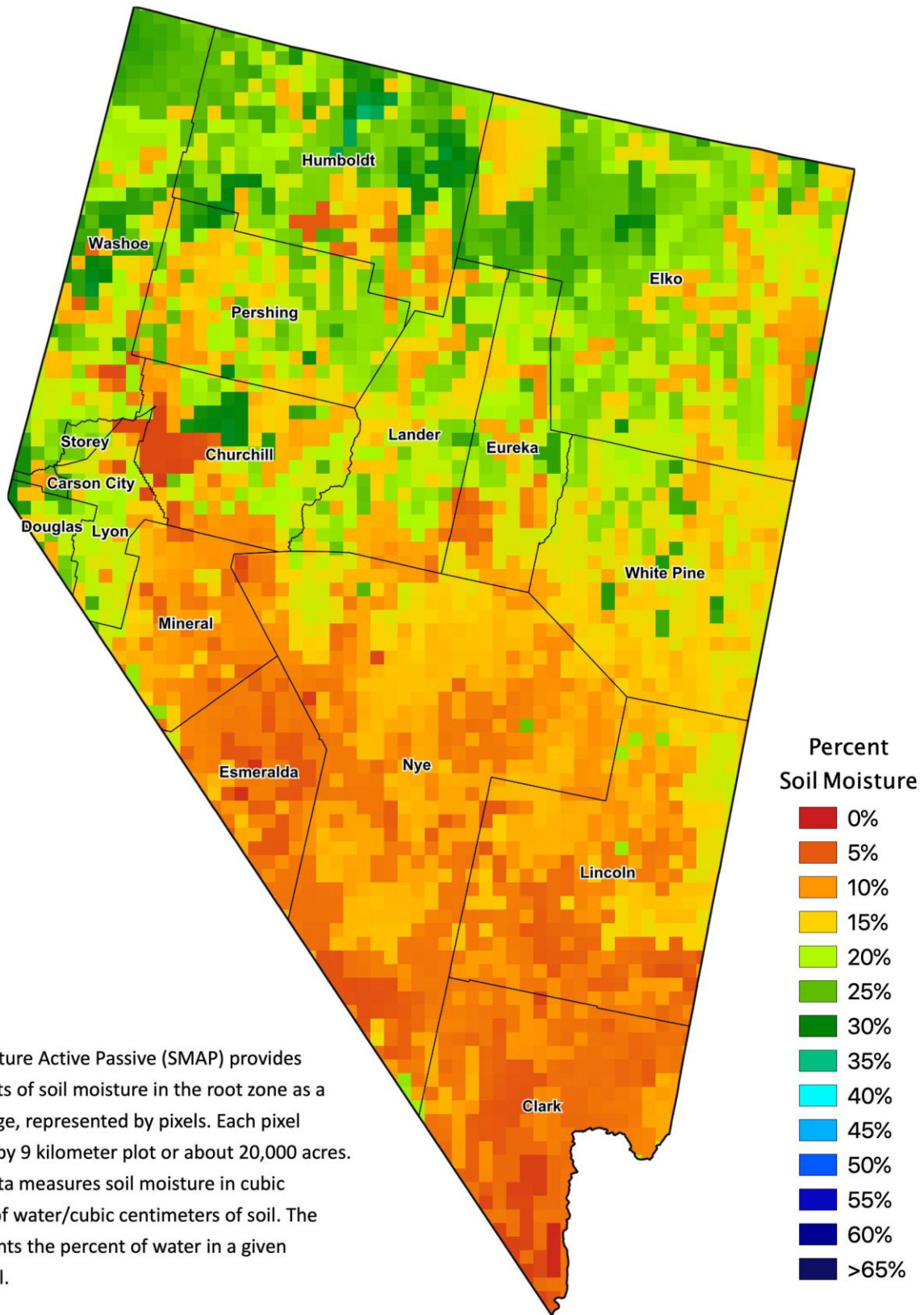
¹ Normal periods 1980-2010 used in departure from normal calculations.

² Rain or melted snow/ice.

Data retrieved from NOAA and NWS. Calculated by USDA NASS.
All rights reserved.



Nevada Soil Moisture Map for the Week of November 8 - 14, 2021



The Soil Moisture Active Passive (SMAP) provides measurements of soil moisture in the root zone as a weekly average, represented by pixels. Each pixel represents 9 by 9 kilometer plot or about 20,000 acres. The SMAP data measures soil moisture in cubic centimeters of water/cubic centimeters of soil. The scale represents the percent of water in a given volume of soil.