



Nevada Crop Progress & Condition

Pacific Regional Office · 650 Capitol Mall 6-100 · Sacramento, CA 95812-1258 · (916) 738-6600 · www.nass.usda.gov/nv

Week Ending November 14, 2021

Released November 15, 2021

Weather Summary

The average lows for Nevada ranged from 22 degrees in Ely to 55 degrees in Las Vegas. The average highs ranged from 64 degrees in Elko to 80 degrees in Las Vegas. Precipitation for Nevada ranged from 0.01 inches in Winnemucca, 0.02 inches in Ely and Tonopah, 0.03 inches in Elko, and 0.08 inches in Reno.

Crops Summary

Days Suitable for Fieldwork: 7.0 days. Topsoil Moisture: 5% very short, 10% short, and 85% adequate. Subsoil Moisture: 15% very short, 35% short, and 50% adequate. Pasture and Range Condition: 20% Very Poor, 25% Poor, 50% Fair, and 5% Good.

Week of 11/08/2021 through 11/15/2021

Station	Temperature				Precipitation ²
	High	Low	Average	Departure from Normal ¹	
Reno	69	34	51	7	0.08
Elko	64	24	44	7	0.03
Ely	67	22	42	6	0.02
Winnemucca	67	24	45	6	0.01
Eureka	66	26	42	5	0.00
Tonopah	70	33	50	8	0.02
Las Vegas	80	55	69	11	0.00

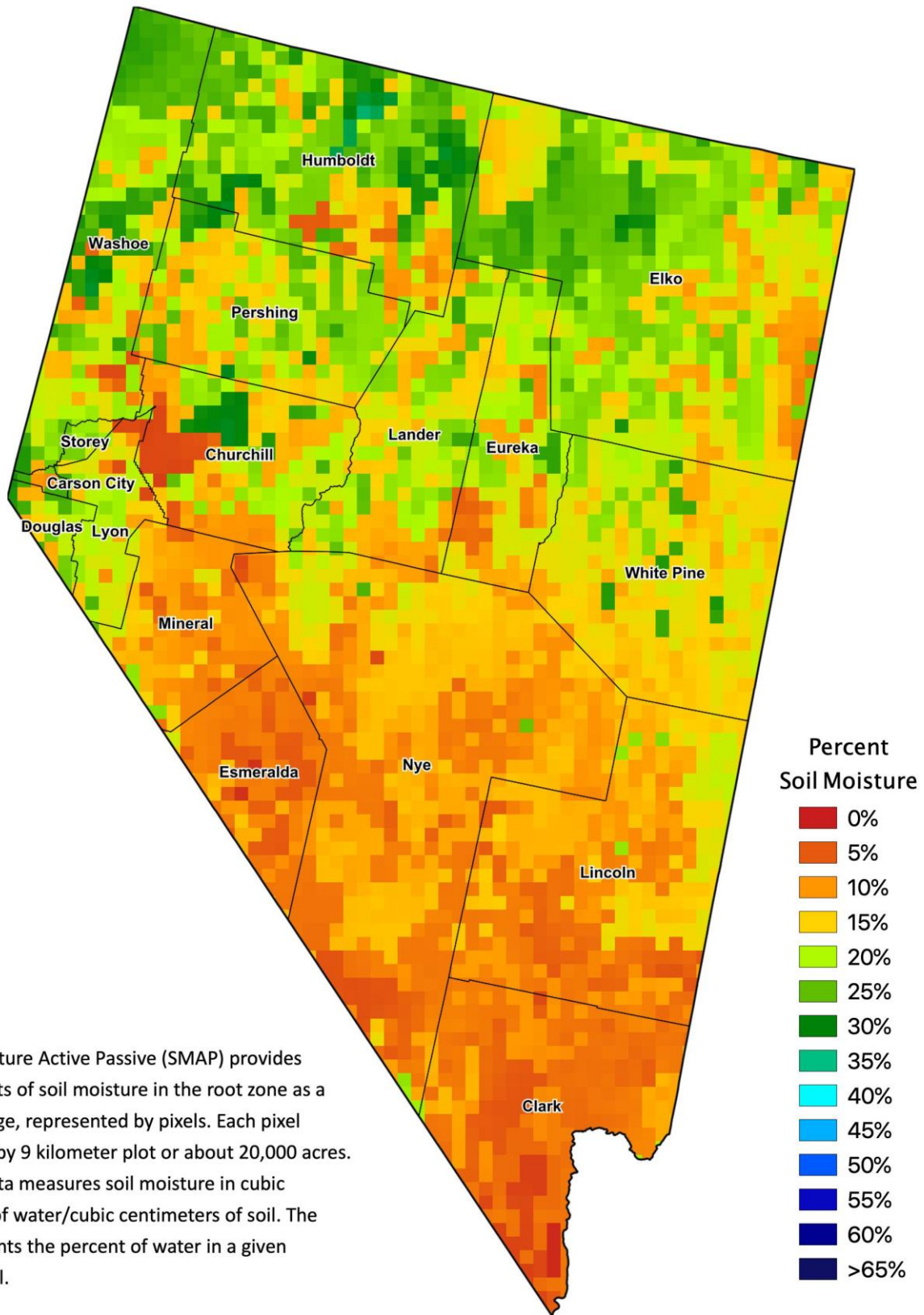
¹ Normal periods 1980-2010 used in departure from normal calculations.

² Rain or melted snow/ice.

Data retrieved from NOAA and NWS. Calculated by USDA NASS.
All rights reserved.



Nevada Soil Moisture Map for the Week of November 1 - 7, 2021



The Soil Moisture Active Passive (SMAP) provides measurements of soil moisture in the root zone as a weekly average, represented by pixels. Each pixel represents 9 by 9 kilometer plot or about 20,000 acres. The SMAP data measures soil moisture in cubic centimeters of water/cubic centimeters of soil. The scale represents the percent of water in a given volume of soil.