



Nevada Crop Progress & Condition

Pacific Regional Office · 650 Capitol Mall 6-100 · Sacramento, CA 95812-1258 · (916) 738-6600 · www.nass.usda.gov/nv

Week Ending August 29, 2021

Released August 30, 2021

Weather Summary

The average lows for Nevada ranged from 40 degrees in Elko and Ely to 73 degrees in Las Vegas. The average highs ranged from 89 degrees in Ely to 108 degrees in Las Vegas. No precipitation was observed at any of the reporting stations in Nevada.

Crops Summary

Days Suitable for Fieldwork: 7.0 days. Topsoil Moisture: 40% very short, 20% short, and 40% adequate. Subsoil Moisture: 40% very short, 25% short, and 35% adequate. Pasture and Range Condition: 40% Very Poor, 30% Poor, and 30% Fair.

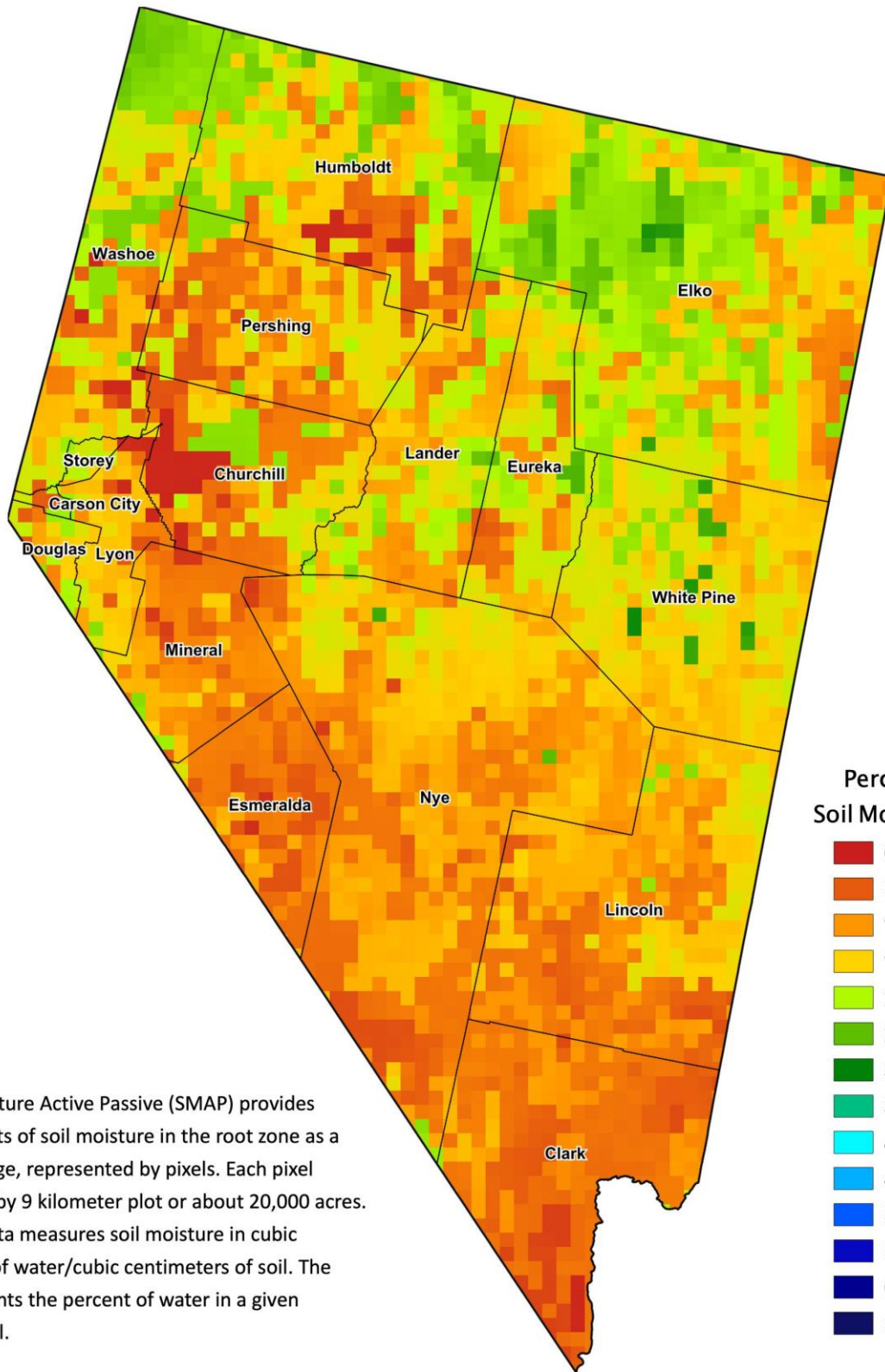
Week of 08/23/2021 through 08/29/2021

Station	Temperature				Precipitation ²
	High	Low	Average	Departure from Normal ¹	
Reno	97	51	71	0	0.00
Elko	90	40	66	0	0.00
Ely	89	40	65	1	0.00
Winnemucca	96	44	66	-2	0.00
Eureka	91	42	65	-1	0.00
Tonopah	94	49	71	0	0.00
Las Vegas	108	73	93	4	0.00

¹ Normal periods 1980-2010 used in departure from normal calculations.

² Rain or melted snow/ice.

Data retrieved from NOAA and NWS. Calculated by USDA NASS.
All rights reserved.



Percent Soil Moisture

- 0%
- 5%
- 10%
- 15%
- 20%
- 25%
- 30%
- 35%
- 40%
- 45%
- 50%
- 55%
- 60%
- >65%

The Soil Moisture Active Passive (SMAP) provides measurements of soil moisture in the root zone as a weekly average, represented by pixels. Each pixel represents 9 by 9 kilometer plot or about 20,000 acres. The SMAP data measures soil moisture in cubic centimeters of water/cubic centimeters of soil. The scale represents the percent of water in a given volume of soil.