



# Nevada Crop Progress & Condition

Pacific Regional Office · 650 Capitol Mall 6-100 · Sacramento, CA 95812-1258 · (916) 738-6600 · [www.nass.usda.gov/nv](http://www.nass.usda.gov/nv)

Week Ending May 16, 2021

Released May 17, 2021

## Weather Summary

The average lows for Nevada ranged from 23 degrees in Ely to 65 degrees in Las Vegas. The average highs ranged from 79 degrees in Ely to 98 degrees in Las Vegas. Precipitation for Nevada ranged from 0.01 inches in Reno, 0.05 inches in Tonopah, 0.12 inches in Winnemucca, 0.33 inches in Elko, and 0.39 inches in Eureka.

## Crops Summary

Days Suitable for Fieldwork: 6.5 days. Topsoil Moisture: 10% short and 90% adequate. Subsoil Moisture: 5% very short, 25% short, and 70% adequate. Pasture and Range Condition: 10% Very Poor, 10% Poor, 75% Fair, and 5% Good.

### Week of 05/10/2021 through 05/16/2021

Station	High	Low	Average	Departure from Normal <sup>1</sup>	Precipitation <sup>2</sup>
Reno	86	42	63	4	0.01
Elko	82	27	55	2	0.33
Ely	79	23	52	2	0.00
Winnemucca	85	30	58	3	0.12
Eureka	82	25	53	3	0.39
Tonopah	84	41	62	4	0.05
Las Vegas	98	65	81	5	0.00

<sup>1</sup> Normal periods 1980-2010 used in departure from normal calculations.

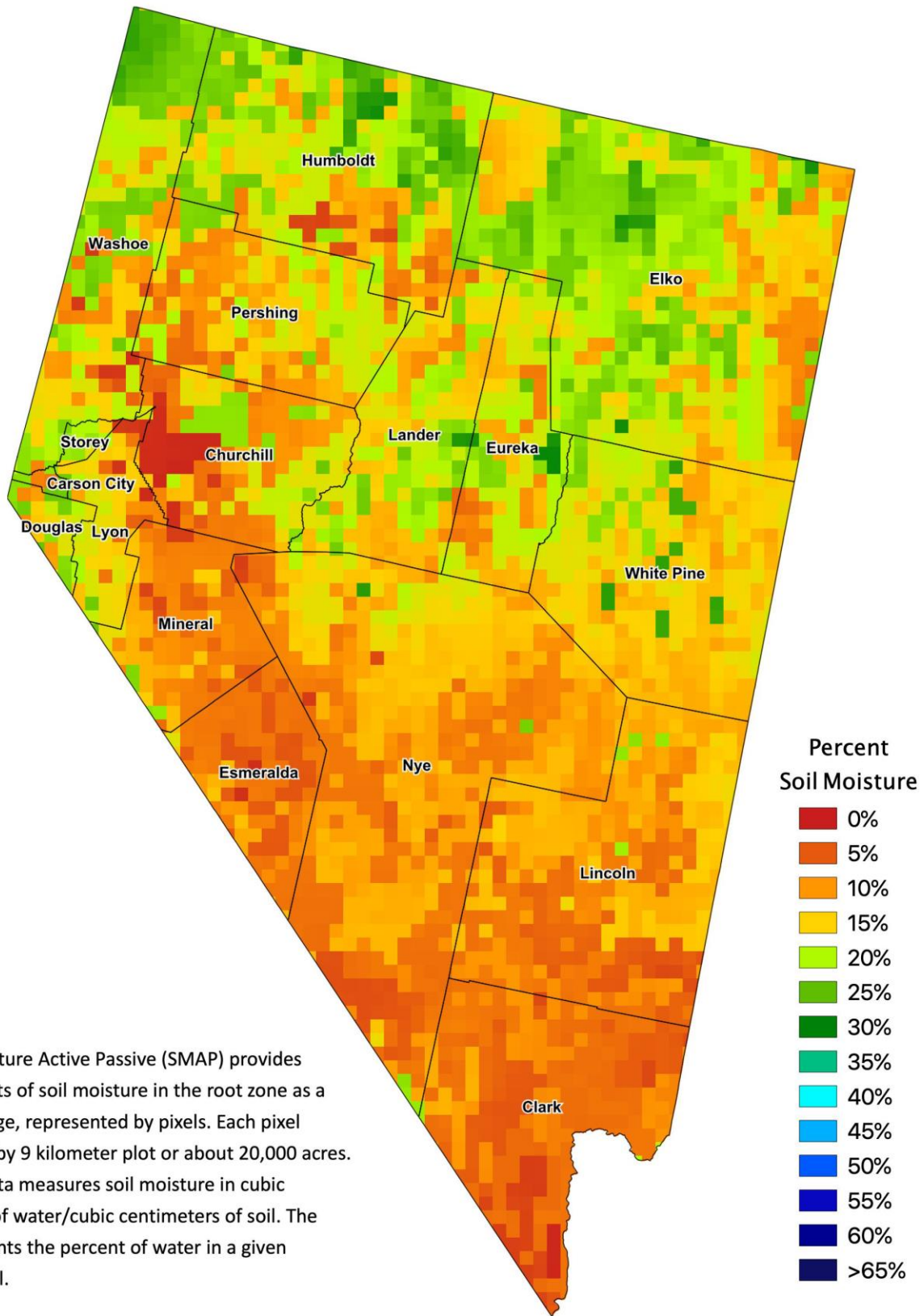
<sup>2</sup> Rain or melted snow/ice.

Data retrieved from NOAA and NWS. Calculated by USDA NASS.

All rights reserved.



# Nevada Soil Moisture Map for the Week of May 3 - 9, 2021



The Soil Moisture Active Passive (SMAP) provides measurements of soil moisture in the root zone as a weekly average, represented by pixels. Each pixel represents 9 by 9 kilometer plot or about 20,000 acres. The SMAP data measures soil moisture in cubic centimeters of water/cubic centimeters of soil. The scale represents the percent of water in a given volume of soil.