



Nebraska Weather and Crops

100 Centennial Mall North, Room 298, Lincoln, Nebraska 68508
(402) 437-5541 · (402) 437-5547 FAX · www.nass.usda.gov



Issue NE-CW3710

Released September 13, 2010

Agricultural Summary: For the week ending September 12, 2010, temperatures early in the week dipped below freezing in parts of the Panhandle and Southwest impacting crops not yet mature, according to USDA's National Agricultural Statistics Service. Corn harvest was underway in the southeastern third of the State and was advancing north and west. In Panhandle counties, wheat seeding was near 50 percent complete and dry bean and millet harvests were active. Irrigators continued shutting down systems, picking up pipe, and preparing equipment for harvest.

Weather Summary: Temperatures averaged 1 degree below normal with highs reaching the low 90's and lows below freezing in parts of the west. Limited amounts of rain fell during the week. The Northeast and North Central Districts averaged .34 inch and Southwest with .22 inch. The remainder of the State averaged less than .10 inch of precipitation for the week.

**Soil Moisture and Days Suitable:
Nebraska, Week Ending September 12, 2010**

	This Week	Last Week	Last Year	Average
<i>Percent</i>				
Topsoil				
Very Short	4	3	1	7
Short	37	36	24	28
Adequate	59	61	73	62
Surplus	0	0	2	3
Subsoil				
Very Short	2	1	2	15
Short	25	21	18	29
Adequate	73	78	79	55
Surplus	0	0	1	1
Days Suitable	6.0	5.9	5.8	5.7

Field Crops Report: Corn condition rated 1 percent very poor, 3 poor, 13 fair, 57 good, and 26 excellent, above a year ago. Irrigated fields were 84 percent good or excellent and dryland fields rated 80. Corn reaching the dent stage was 92 percent, ahead of 83 percent last year and 89 average. Mature was at 26 percent, ahead of 9 percent last year and 22 average. Corn harvest has started and was 2 percent complete, same as average.

Soybean conditions rated 2 percent very poor, 3 poor, 15 fair, 55 good, and 25 excellent, near last year. Soybean acreage turning color was 69 percent, ahead of 65 last year and 66 average. Acreage dropping leaves was 20 percent, ahead of 12 last year and 17 average.

Sorghum conditions rated 2 percent poor, 19 fair, 58 good, and 21 excellent, above last year. Sorghum acreage turning color was 93 percent, well ahead of last year's 51 and 75 average. Sorghum mature was 3 percent, behind the 7 average.

Winter wheat seeding was 25 percent complete, near 27 last year and 23 average.

Dry beans conditions rated 1 percent very poor, 6 poor, 18 fair, 68 good, and 7 excellent, above last year. Dry bean acreage dropping leaves was 64 percent, ahead of last year's 41 and 47 average. Dry beans harvested was 29 percent, ahead of 19 last year and 15 average.

Proso millet harvest was at 30 percent, ahead of 14 last year and 21 average.

Alfalfa rated 1 percent very poor, 4 poor, 15 fair, 64 good, and 16 excellent. The fourth cutting of alfalfa progressed to 44 percent, well ahead of 24 last year and 32 average.

Crop Progress: Nebraska, Week Ending September 12, 2010

Crop	This Week	Last Week	Last Year	Average
<i>Percent</i>				
Alfalfa 4 th Cutting	44	23	24	32
Corn Dent	92	83	83	89
Corn Mature	26	8	9	22
Corn Harvested	2			2
Dry Beans Dropping Leaves	64	41	41	47
Dry Beans Harvested	29		19	15
Proso Millet Harvested	30	16	14	21
Sorghum Turning Color	93	69	51	75
Sorghum Mature	3	1		7
Soybeans Turning Color	69	29	65	66
Soybeans Dropping Leaves	20	4	12	17
Winter Wheat Seeded	25	9	27	23

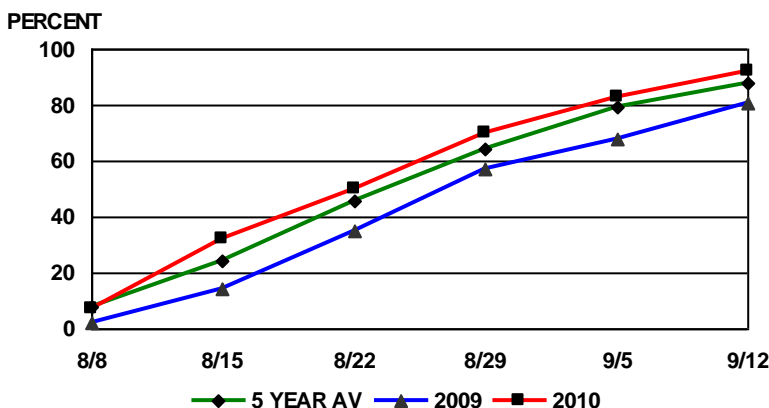
Crop Condition: Nebraska, Week Ending September 12, 2010

Crop	Very Poor	Poor	Fair	Good	Excellent
<i>Percent</i>					
Alfalfa	1	4	15	64	16
Corn	1	3	13	57	26
Sorghum	0	2	19	58	21
Soybeans	2	3	15	55	25
Dry Beans	1	6	18	68	7

Livestock, Pasture and Range Report: Pasture and range conditions rated 1 percent very poor, 4 poor, 18 fair, 66 good, and 11 excellent, above year ago levels.

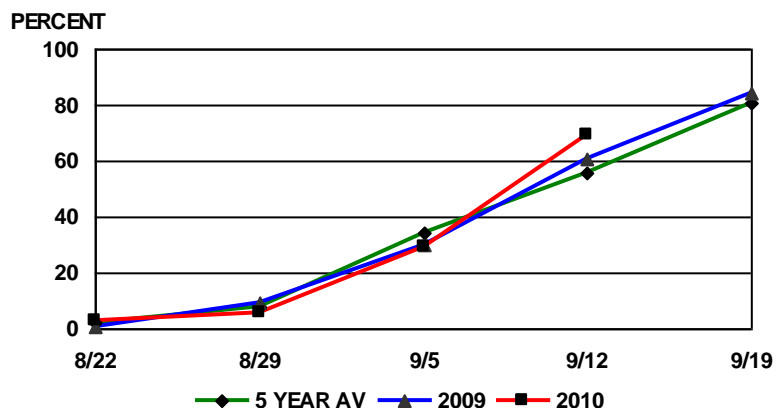
This release is based on data from FSA county directors, county extension educators, NOAA, and the High Plains Regional Climate Center. County comments and reports can be found at: [http://www.nass.usda.gov/Statistics by State/Nebraska/Publications/Crop Progress & Condition/cmts_cur.htm](http://www.nass.usda.gov/Statistics_by_State/Nebraska/Publications/Crop_Progress_&_Condition/cmts_cur.htm)

NEBRASKA CORN DENTED



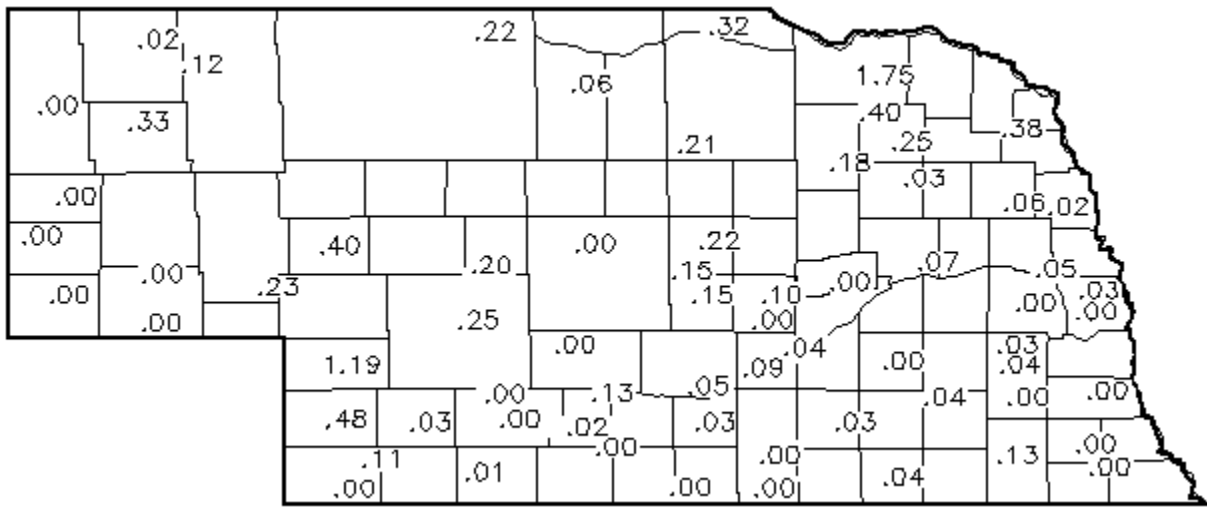
PROGRESS AS OF SUNDAY
Source: USDA NASS Nebraska Field Office

NEBRASKA SOYBEANS TURNING COLOR



PROGRESS AS OF SUNDAY
Source: USDA NASS Nebraska Field Office

Precipitation in Inches for Week Ending 8:00 a.m. September 12, 2010



Precipitation: By District, Nebraska, April 1 – September 12, 2010

Item	NW	NC	NE	CEN	EC	SW	SC	SE
Total past week	0.04	0.34	0.34	0.07	0.04	0.22	0.01	0.05
Total since April 1	13.52	21.04	25.22	22.34	24.96	18.13	24.01	21.59
Normal since April 1	12.13	15.28	18.10	16.94	19.13	14.80	16.72	19.90
Total as % of normal	111%	136%	139%	131%	130%	122%	143%	108%

**Temperature and Growing Degree Days: By Location, Nebraska,
Week Ending Sunday, September 12, 2010**

Station	Temperature				Growing Degree Days Since April 15			
	Extremes		Average	Departure	Last Week	Current	Normal	
	High	Low						
NW	Alliance	87	33	62	-2	2068	2178	2500
	Scottsbluff	88	33	62	-1	2244	2357	2484
	Sidney	88	31	63	-2	2221	2335	2606
NC	Ainsworth	84	46	63	-3	2439	2535	2737
	Arthur	86	38	61	-4	2211	2309	2688
	O'Neill	86	46	63	-3	2459	2560	2782
NE	Concord	83	47	62	-4	2500	2591	2899
	Elgin	87	46	65	-2	2532	2635	2832
	West Point	89	44	65	-3	2701	2808	2979
C	Grand Island	89	44	66	0	2696	2814	2788
	Lexington	89	39	64	-2	2540	2647	2745
	Ord	89	40	63	-3	2530	2636	2780
EC	Central City	90	44	65	-1	2719	2834	2837
	Lincoln	91	50	69	+1	2991	3117	3058
	Mead	90	46	66	-2	2801	2916	3056
SW	Champion	87	29	64	-1	2401	2525	2704
	Dickens	87	33	63	-3	2373	2482	2717
	McCook	93	37	68	+3	2676	2811	2734
SC	Minden	91	41	65	0	2704	2819	2760
	Red Cloud	91	43	68	+2	2832	2956	2815
	Smithfield	89	40	64	-2	2526	2632	2750
SE	Beatrice	92	46	68	0	2870	2995	3058
	Clay Center	89	40	65	-1	2706	2819	2815
	Nemaha	92	54	70	+2	3104	3241	3056

Source: High Plains Regional Climate Center and Nebraska State Climate Office