



Nebraska Weather and Crops

100 Centennial Mall North, Room 298, Lincoln, Nebraska 68508
(402) 437-5541 · (402) 437-5547 FAX · www.nass.usda.gov



Issue NE-CW2310

Released June 7, 2010

Agricultural Summary: For the week ending June 6, 2010, warm temperatures and widespread rainfall supported crop emergence and development, according to USDA's National Agricultural Statistics Service, Nebraska Field Office. Rainfall limited fieldwork to 4.6 days. This delayed planting of the last fields of soybeans and sorghum and challenged hay producers with hay cut. Heaviest amounts of precipitation fell across the eastern half of the state. Winds quieted down allowing herbicide applications. Hail was recorded in a number of areas during the week.

Weather Summary: Temperatures for the week averaged 1 degree above normal with highs in the lower 90's and lows in the mid 40's. The East Central District received over two inches of precipitation, while the Panhandle recorded less than .25 inch in most cases. The Northeast remains well below normal in rainfall since the first of April.

**Soil Moisture and Days Suitable:
Nebraska, Week Ending June 6, 2010**

	This Week	Last Week	Last Year	Average
<i>Percent</i>				
Topsoil				
Very Short	0	0	2	9
Short	5	9	16	14
Adequate	90	88	76	67
Surplus	5	3	6	10
Subsoil				
Very Short	0	0	3	9
Short	3	3	18	18
Adequate	93	94	77	68
Surplus	4	3	2	4
Days Suitable	4.6	5.2	4.9	4.1

Field Crops Report: Corn condition rated 0 percent very poor, 1 poor, 14 fair, 72 good, and 13 excellent. Corn emerged was 96 percent complete, compared to last year's 99 and just behind 97 average.

Soybean planting was 94 percent complete, behind last year's 99 but near 93 average. Soybeans emerged was 76 percent, behind last year's 88 but near 75 average.

Sorghum planting was 68 percent complete, behind last year's 82 and five days behind 77 average. Sorghum emerged was 38 percent complete, behind last year's 51 and three days behind 46 average.

Wheat conditions rated 4 percent poor, 21 fair, 65 good, and 10 excellent, near 74 percent good or excellent last year but well above 51 average. Wheat jointed was at 92 percent, behind last year's 100 and 100 average. Wheat headed was 70 percent complete, five days behind last year's 83 and 83 average. Disease concerns continue in a number of areas.

Oats conditions rated 1 percent poor, 9 percent fair, 70 good, and 20 excellent. Oats headed was 16 percent complete, behind last year's 35 and 31 average.

Dry beans planted were 67 percent complete, ahead of last year's 61 and 50 average. Acreage emerged was at 6 percent, behind both 29 last year and 15 average.

Alfalfa rated 1 percent poor, 10 fair, 72 good, and 17 excellent. Conditions were above last year's 75 percent good or excellent condition and 61 average. First cutting of alfalfa was 60 percent complete, ahead of 55 last year and 51 average.

Wild Hay conditions rated 10 percent fair, 76 good, and 14 excellent.

Crop Progress: Nebraska, Week Ending June 6, 2010

Crop	This Week	Last Week	Last Year	Average
Alfalfa 1 st Cutting	60	29	55	51
Corn Emerged	96	79	99	97
Dry Beans Planted	67	14	61	50
Dry Beans Emerged	6	1	29	15
Oats Headed	16	4	35	31
Soybeans Planted	94	85	99	93
Soybeans Emerged	76	43	88	75
Sorghum Planted	68	47	82	77
Sorghum Emerged	38	11	51	46
Wheat Jointed	92	88	100	100
Wheat Headed	70	33	83	83

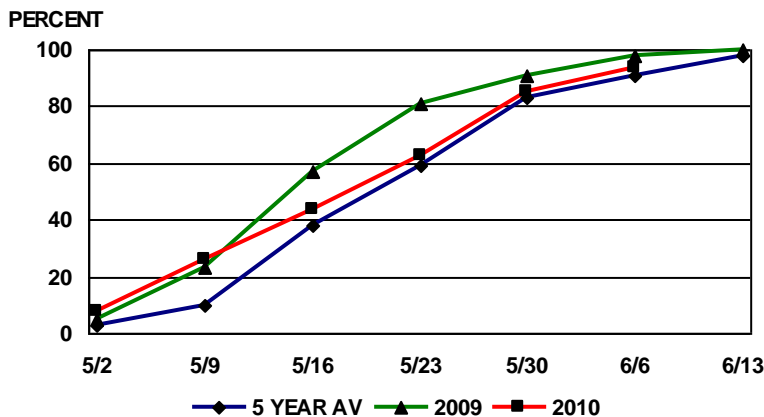
Crop Condition: Nebraska, Week Ending June 6, 2010

Crop	Very Poor	Poor	Fair	Good	Excellent
Alfalfa	0	1	10	72	17
Corn	0	1	14	72	13
Soybeans	0	1	13	80	6
Oats	0	1	9	70	20
Wheat	0	4	21	65	10
Wild Hay	0	0	10	76	14

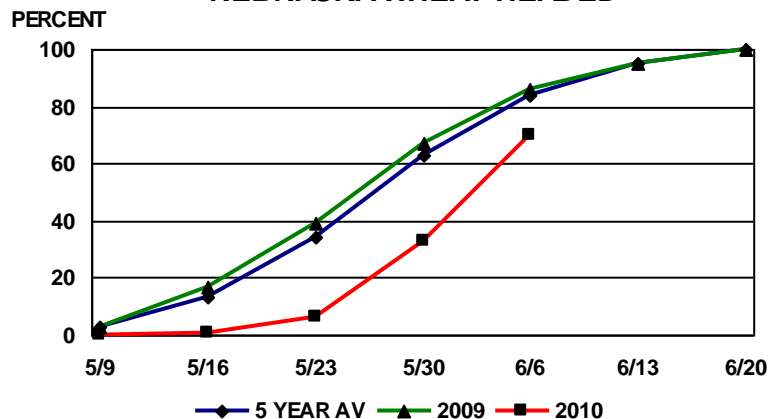
Livestock, Pasture and Range Report: Pasture and range conditions rated 0 percent very poor, 0 poor, 10 fair, 76 good, and 14 excellent, above last year's 76 good and excellent and 63 average.

This release is based on data from FSA county directors, county extension educators, NOAA, and the High Plains Regional Climate Center. County comments and reports can be found at: http://www.nass.usda.gov/Statistics_by_State/Nebraska/Publications/Crop_Progress_&_Condition/cmts_cur.htm

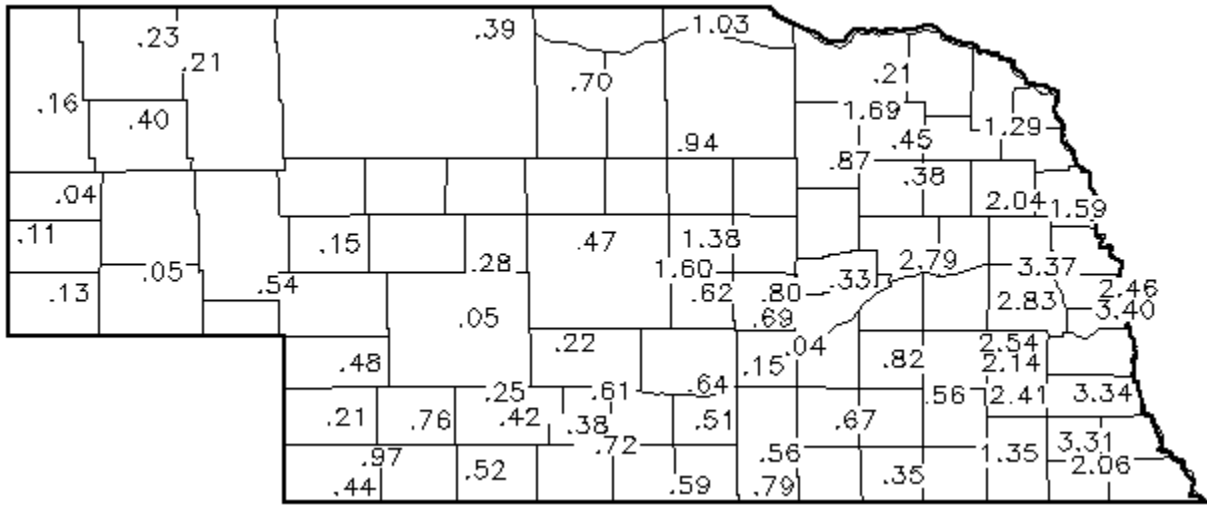
NEBRASKA SOYBEANS PLANTED



NEBRASKA WHEAT HEADED



Precipitation in Inches for Week Ending 8:00 a.m. June 6, 2010



Precipitation: By District, Nebraska, April 1 – June 6, 2010

Item	NW	NC	NE	CEN	EC	SW	SC	SE
Total past week	.12	.60	.97	.67	2.30	.35	.61	1.73
Total since April 1	5.90	6.76	5.78	6.43	8.04	5.66	8.39	8.73
Normal since April 1	5.34	6.02	7.40	6.98	7.69	5.98	6.67	7.71
Total as % of normal	111%	111%	77%	91%	104%	94%	126%	113%

Temperature and Growing Degree Days: By Location, Nebraska, Week Ending Sunday, June 6, 2010

Station	Temperature				Growing Degree Days Since April 15			
	Extremes		Average	Departure	Last Week	Current	Normal	
	High	Low						
NW	Alliance	84	45	64	0	293	397	521
	Scottsbluff	88	47	67	+3	343	464	518
	Sidney	87	48	67	+2	324	446	544
NC	Ainsworth	86	49	65	-2	369	477	572
	Arthur	86	45	65	-1	324	434	564
	O'Neill	83	45	65	-3	394	498	583
NE	Concord	85	47	67	-1	441	566	609
	Elgin	85	48	67	-1	424	541	596
	West Point	86	47	69	0	489	624	631
C	Grand Island	89	45	70	+2	456	594	588
	Lexington	88	44	69	+2	417	549	578
	Ord	87	41	67	-1	429	551	584
EC	Central City	89	44	69	+2	497	632	598
	Lincoln	91	48	73	+3	528	681	653
	Mead	89	47	70	+1	511	653	652
SW	Champion	90	45	69	+2	381	509	568
	Dickens	87	46	67	+1	362	487	571
	McCook	90	48	70	+3	428	564	576
SC	Minden	89	45	70	+3	465	607	582
	Red Cloud	95	48	72	+4	482	629	594
	Smithfield	88	46	69	+2	412	545	579
SE	Beatrice	93	48	73	+3	501	651	653
	Clay Center	91	45	71	+3	464	605	593
	Nemaha	95	57	74	+4	576	736	655

Source: High Plains Regional Climate Center and Nebraska State Climate Office