



Nebraska Weather and Crops

100 Centennial Mall North, Room 298, Lincoln, Nebraska 68508
(402) 437-5541 · (402) 437-5547 FAX · www.nass.usda.gov



Issue NE-CW2210

Released June 1, 2010

Agricultural Summary: For the week ending May 30, 2010, warm temperatures and sunshine provided crops with improved growing conditions according to USDA's National Agricultural Statistics Service, Nebraska Field Office. Accumulated growing degree days moved closer to normal levels this past week and aided the emergence and condition of crops. Soybean and sorghum planting progressed with over 5 days suitable for field work. Heavier amounts of precipitation fell across the northern half of the state. Mud in feedlots made for poor conditions in some southern counties. Cattle had choice grazing in pastures thanks to good grass growth.

Weather Summary: Temperatures for the week averaged 4 degrees above normal with highs in the upper 80's to lower 90's. The Northeast and Central Districts received over an inch of precipitation, while the North Central District received almost 2.5 inches. However, the Northeast and East Central Districts remained well below normal on rainfall during April and May. Winds were recorded on numerous days.

**Soil Moisture and Days Suitable:
Nebraska, Week Ending May 30, 2010**

	This Week	Last Week	Last Year	Average
<i>Percent</i>				
Topsoil				
Very Short	0	0	3	9
Short	9	3	24	19
Adequate	88	87	69	64
Surplus	3	10	4	8
Subsoil				
Very Short	0	0	4	10
Short	3	3	19	21
Adequate	94	90	76	66
Surplus	3	7	2	3
Days Suitable	5.2	3.7	5.4	4.8

Field Crops Report: Corn condition rated 0 percent very poor, 0 poor, 16 fair, 71 good, and 13 excellent. Corn planting was almost completed at 99 percent statewide. This was one day behind last year's 100 percent but at pace with average. Corn emerged was 79 percent complete, six days behind last year's 92 and four days behind the 88 average.

Soybean planting was 85 percent complete, six days behind last year's 96 and slightly behind the 86 average. Soybeans emerged was 43 percent, behind last year's 68 and 52 average.

Sorghum planting was 47 percent complete, eight days behind last year's 68 and six days behind the 65 average. Sorghum emerged was 11 percent complete, a week behind last year's 36 and six days behind the 26 average.

Wheat conditions rated 4 percent poor, 19 fair, 65 good, and 12 excellent, above the 75 percent good or excellent of last year and the 52 average. Wheat jointed was at 88 percent, behind last year's 100 and 99 average. Wheat headed was 33 percent complete, a week behind last year's 62 and 62 average.

The South Central District was farthest along in development. Disease concerns were noted in some southeastern and south central counties.

Oats conditions rated 7 percent fair, 79 good, and 14 excellent. Oats emerged was 99 percent, behind last year's 100 and 100 average. Oats headed was 4 percent complete, behind last year's 21 and 14 average.

Dry beans planted were 14 percent complete, behind last year's 34 and 27 average.

Alfalfa rated 2 percent poor, 14 fair, 69 good, and 15 excellent. Conditions were above last year's 77 percent good or excellent condition and 60 average. First cutting of alfalfa was 29 percent complete with most of the progress in the eastern half of the state.

Wild Hay conditions rated 12 percent fair, 73 good, and 15 excellent.

Crop Progress: Nebraska, Week Ending May 30, 2010

Crop	This Week	Last Week	Last Year	Average
<i>Percent</i>				
Alfalfa 1 st Cutting	29	12	39	35
Corn Planted	99	96	100	99
Corn Emerged	79	59	92	88
Dry Beans Planted	14	6	34	27
Oats Emerged	99	98	100	100
Oats Headed	4		21	14
Soybeans Planted	85	63	96	86
Soybeans Emerged	43	15	68	52
Sorghum Planted	47	21	68	65
Sorghum Emerged	11	5	36	26
Wheat Jointed	88	78	100	99
Wheat Headed	33	6	62	62

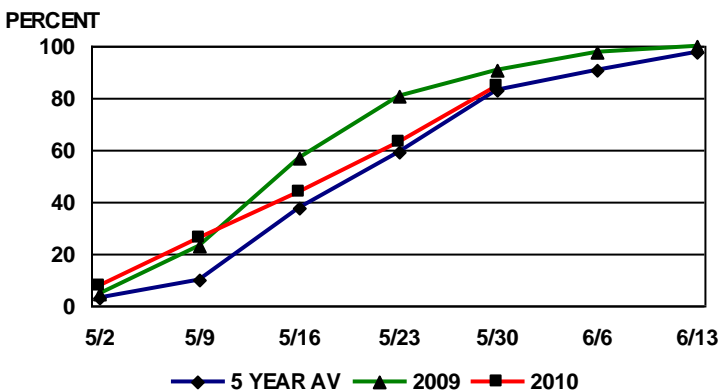
Crop Condition: Nebraska, Week Ending May 30, 2010

Crop	Very Poor	Poor	Fair	Good	Excellent
<i>Percent</i>					
Alfalfa	0	2	14	69	15
Corn	0	0	16	71	13
Oats	0	0	7	79	14
Wheat	0	4	19	65	12
Wild Hay	0	0	12	73	15

Livestock, Pasture and Range Report: Pasture and range conditions rated 0 percent very poor, 1 poor, 14 fair, 70 good, and 15 excellent, above last year's 74 good and excellent and 60 average.

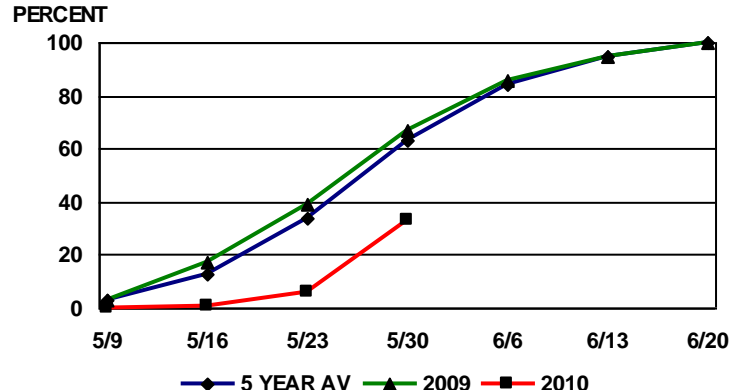
This release is based on data from FSA county directors, county extension educators, NOAA, and the High Plains Regional Climate Center. County comments and reports can be found at: http://www.nass.usda.gov/Statistics_by_State/Nebraska/Publications/Crop_Progress_&_Condition/cmts_cur.htm

NEBRASKA SOYBEANS PLANTED



PROGRESS AS OF SUNDAY
Source: USDA NASS Nebraska Field Office

NEBRASKA WHEAT HEADED



PROGRESS AS OF SUNDAY
Source: USDA NASS Nebraska Field Office

