



Nebraska Weather and Crops

100 Centennial Mall North, Room 298, Lincoln, Nebraska 68508
(402) 437-5541 · (402) 437-5547 FAX · www.nass.usda.gov



Issue NE-CW 3009

Released July 27, 2009

Agricultural Summary: For the week ending July 26, 2009, wheat harvest progressed rapidly in western counties, according to USDA's National Agricultural Statistics Service, Nebraska Field Office. Hail damage was reported in a few counties from a mid-week storm. Producers continued to apply fungicides to corn in parts of the state. Other activities included irrigation and haying.

Weather Summary: Temperatures averaged 5 degrees below normal, ranging from highs near 100 to lows in the upper 40's. Precipitation was widespread with most districts averaging near a half inch.

**Soil Moisture and Days Suitable:
Nebraska, Week Ending July 26, 2009**

	This Week	Last Week	Last Year	Average
<i>Percent</i>				
Topsoil				
Very Short	3	1	6	18
Short	21	16	25	32
Adequate	74	77	66	48
Surplus	2	6	3	2
Subsoil				
Very Short	2	1	8	22
Short	16	13	18	31
Adequate	80	82	71	46
Surplus	2	4	3	1
Days Suitable	6.1	5.4	5.7	5.9

Field Crops Report: Corn conditions rated 2 percent very poor, 5 poor, 15 fair, 54 good, and 24 excellent, near last year's 76 percent good or excellent rating. Irrigated fields rated 79 percent good or excellent, above last year while dryland fields rated 76, near year ago levels. Corn silked was 77 percent, ahead of last year's 68 but three days behind the average of 83. Eight percent of the corn was in the dough stage, ahead of last year's 3 but behind the 13 average.

Soybean conditions rated 1 percent very poor, 3 poor, 15 fair, 63 good, and 18 excellent, above last year's 76 percent good or excellent condition. Soybeans blooming were 75 percent, ahead of last year's 60 but near the average of 77. Soybeans setting pods was 24 percent, ahead of last year's 14 but behind the 35 average.

Wheat ripe was at 99 percent, ahead of last year's 97 but even with the average. Wheat harvested was 85 percent complete, near last year's 86 but three days behind the 94 average.

Alfalfa conditions rated 1 percent very poor, 5 poor, 24 fair, 58 good, and 12 excellent, well above last year's 54 percent good or excellent condition. Second cutting was 84 percent complete ahead of last year's 76 but behind the average of 88. Third cutting was underway at 5 percent, near last year's 4 but behind the 9 average.

Oat conditions rated 0 percent very poor, 2 poor, 8 fair, 69 good, and 21 excellent, near last year's 89 good or excellent rating.

Oats harvested was 43 percent, near last year's 45 but five days behind the 73 average.

Sorghum conditions rated 1 percent very poor, 2 poor, 25 fair, 56 good, and 16 excellent, near last year's 71 percent good or excellent condition. Sorghum headed was 6 percent, ahead of last year's 4 but behind the 18 average.

Dry bean conditions rated 1 percent very poor, 10 poor, 19 fair, 66 good, and 4 excellent, above last year's 54 percent good or excellent condition. Dry beans blooming were 56 percent, even with last year but ahead of the 52 average. Dry beans setting pods were 12 percent, ahead of last year's 10 but even with the average.

Wild hay conditions rated 0 percent very poor, 1 poor, 13 fair, 70 good, and 16 excellent, above last year's 81 percent good or excellent condition.

Crop Progress: Nebraska, Week Ending July 26, 2009

Crop	This Week	Last Week	Last Year	Average
<i>Percent</i>				
Alfalfa 2 nd Cutting	84	65	76	88
Alfalfa 3 rd Cutting	5		4	9
Corn Silked	77	53	68	83
Corn Dough	8	3	3	13
Dry Beans Blooming	56	23	56	52
Dry Beans Setting Pods	12	8	10	12
Oats Harvested	43	31	45	73
Sorghum Headed	6	1	4	18
Soybeans Blooming	75	62	60	77
Soybeans Setting Pods	24	11	14	35
Wheat Ripe	99	92	97	99
Wheat Harvested	85	56	86	94

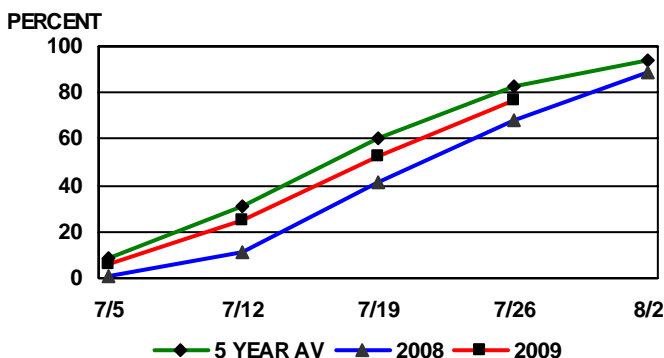
Crop Condition: Nebraska, Week Ending July 26, 2009

Crop	Very Poor	Poor	Fair	Good	Excellent
<i>Percent</i>					
Alfalfa	1	5	24	58	12
Corn	2	5	15	54	24
Dry Beans	1	10	19	66	4
Oats	0	2	8	69	21
Sorghum	1	2	25	56	16
Soybeans	1	3	15	63	18
Wild Hay	0	1	13	70	16

Livestock, Pasture and Range Report: Pasture and range conditions rated 1 percent very poor, 3 poor, 22 fair, 59 good, and 15 excellent, above last year's 70 percent good or excellent condition.

This release is based on data from FSA county directors, county extension educators, NOAA, and the High Plains Regional Climate Center. County comments and reports can be found at: http://www.nass.usda.gov/Statistics/by_State/Nebraska/Publications/Crop_Progress_&Condition/cmts_cur.htm

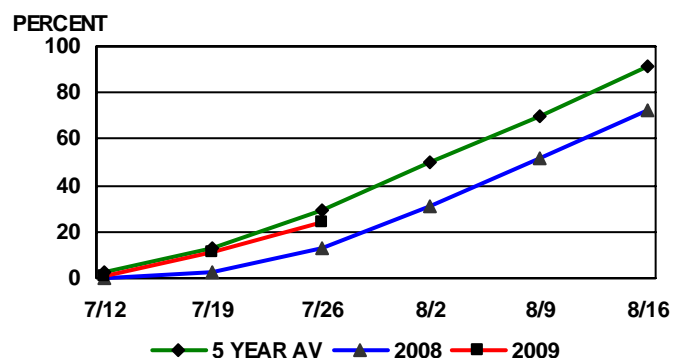
NEBRASKA CORN SILKED



PROGRESS AS OF SUNDAY

Source: USDA NASS Nebraska Field Office

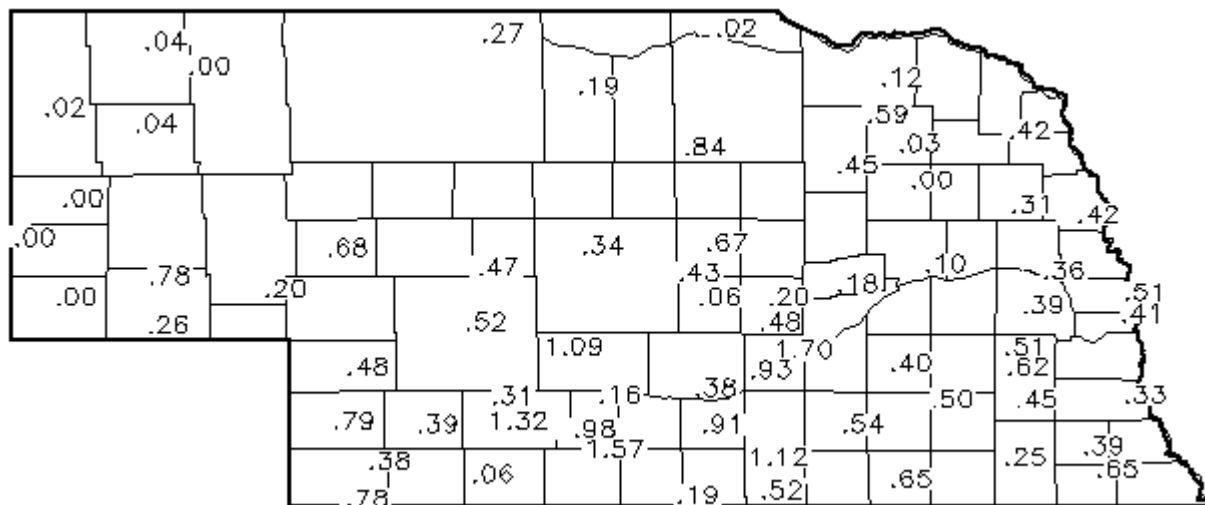
NEBRASKA SOYBEANS SETTING PODS



PROGRESS AS OF SUNDAY

Source: USDA NASS Nebraska Field Office

Precipitation in Inches for Week Ending 8:00 a.m. July 26, 2009



Precipitation: By District, Nebraska, April 1 – July 26, 2009

Item	NW	NC	NE	CEN	EC	SW	SC	SE
Total past week	.18	.63	.29	.61	.49	.46	.89	.45
Total since April 1	12.78	11.69	10.35	12.40	11.84	15.22	12.52	12.83
Normal since April 1	9.64	11.51	13.56	12.63	13.79	11.39	12.33	14.09
Total as % of normal	132%	102%	76%	97%	85%	133%	101%	90%

Temperature and Growing Degree Days: By Location, Nebraska, Week Ending Sunday, July 26, 2009

Station	Temperature				Growing Degree Days Since April 15			
	Extremes		Average	Departure	Last Week	Current	Normal	
	High	Low						
NW	Alliance	93	47	71	-4	136	1301	1554
	Scottsbluff	95	51	72	-3	142	1410	1537
	Sidney	99	51	72	-3	142	1341	1617
NC	Ainsworth	89	54	72	-5	147	1388	1706
	Arthur	93	49	71	-5	141	1343	1673
	O'Neill	88	53	71	-6	144	1436	1735
NE	Concord	88	53	68	-9	127	1473	1808
	Elgin	97	55	72	-5	148	1511	1766
	West Point	93	52	70	-8	135	1589	1859
C	Grand Island	92	53	71	-5	145	1627	1739
	Lexington	93	53	71	-5	146	1568	1711
	Ord	96	51	71	-5	142	1540	1733
EC	Central City	92	51	70	-6	139	1638	1770
	Lincoln	97	58	74	-5	160	1851	1911
	Mead	92	53	70	-9	136	1684	1910
SW	Champion	100	53	72	-4	143	1475	1684
	Dickens	99	51	72	-4	144	1429	1692
	McCook	99	55	74	-2	155	1674	1704
SC	Minden	92	53	71	-5	144	1636	1721
	Red Cloud	95	53	73	-4	152	1768	1756
	Smithfield	93	55	72	-5	147	1586	1714
SE	Beatrice	95	58	72	-7	149	1773	1911
	Clay Center	95	52	71	-6	140	1658	1756
	Nemaha	93	58	74	-5	161	1882	1912

Source: High Plains Regional Climate Center and Nebraska State Climate Office