



Nebraska Weather and Crops

100 Centennial Mall North, Room 298, Lincoln, Nebraska 68508
(402) 437-5541 · (402) 437-5547 FAX · www.nass.usda.gov



Issue NE-CW 2309

Released June 8, 2009

Agricultural Summary: For the week ending June 7, 2009, heavy amounts of rain fell across much of the state bringing relief to dryland crops, according to USDA's National Agricultural Statistics Service, Nebraska Field Office. The wet conditions at the end of the week slowed fieldwork operations but aided crops already in the ground. Spring rainfall totals across central and eastern Nebraska remain well below normal. Storms produced hail and heavy rain in a few areas causing localized flooding and damage to crops. During the week producers were busy spraying herbicides, windrowing and baling alfalfa, as well as marketing grain.

Weather Summary: Temperatures across the state averaged six degrees below normal and ranged from highs in the upper 80's to lows near 40. Precipitation was widespread with every district reporting at least an average of a half inch. The Central, East Central, and Southeast Districts all reported over one and a half inches of rainfall.

**Soil Moisture and Days Suitable:
Nebraska, Week Ending June 7, 2009**

	This Week	Last Week	Last Year	Average
<i>Percent</i>				
Topsoil				
Very Short	2	3	1	14
Short	15	23	5	16
Adequate	77	70	68	61
Surplus	6	4	26	9
Subsoil				
Very Short	3	4	4	18
Short	18	19	11	20
Adequate	77	75	70	58
Surplus	2	2	15	4
Days Suitable	4.8	5.3	2.1	4.4

Field Crops Report: Corn conditions rated 0 percent very poor, 1 poor, 15 fair, 71 good, and 13 excellent, well above last year's 65 percent good or excellent rating. After a cool spring, warmer conditions are needed to boost growth and development.

Soybean conditions rated 1 percent very poor, 1 poor, 20 fair, 66 good, and 12 excellent, well above last year's 66 percent good or excellent condition. Soybeans emerged was 90 percent, almost three weeks ahead of last year's 56 and a week ahead of the 75 average.

Wheat conditions rated 1 percent very poor, 4 poor, 21 fair, 58 good, and 16 excellent, well above last year's 60 percent good or excellent condition. Wheat headed jumped to 86 percent complete, four days ahead of last year's 75 but near the 88 average. Harvest is expected to begin around the first of July in the southeast and by mid-July in the Panhandle.

Alfalfa conditions rated 1 percent very poor, 3 poor, 21 fair, 61 good, and 14 excellent, near last year's 74 percent good or excellent condition. First cutting was 57 percent complete, well ahead of last year's 17 and near the 55 average.

Oat conditions rated 0 percent very poor, 2 poor, 12 fair, 75 good, and 11 excellent, even with last year's 86 percent good or excellent condition. Oats headed was 37 percent, ahead of last year's 25 and even with the average.

Sorghum planted was 84 percent complete, a week ahead of last year's 62 and three days ahead of the 79 average. Sorghum emerged was 53 percent, ahead of last year's 32 the 49 average.

Dry bean planting was 65 percent complete, well ahead of last year's 33 and the 54 average. Dry beans emerged were at 31 percent, well ahead of last year's 3 and 13 average.

Proso millet planted was at 27 percent, ahead of last year's 21 but near the 29 average.

Crop Progress: Nebraska, Week Ending June 7, 2009

Crop	This Week	Last Week	Last Year	Average
<i>Percent</i>				
Alfalfa 1 st Cutting	57	42	17	55
Dry Beans Planted	65	36	33	54
Dry Beans Emerged	31	16	3	13
Oats Headed	37	24	25	37
Proso Millet Planted	27	17	21	29
Sorghum Planted	84	71	62	79
Sorghum Emerged	53	40	32	49
Soybeans Emerged	90	73	56	75
Wheat Headed	86	67	75	88

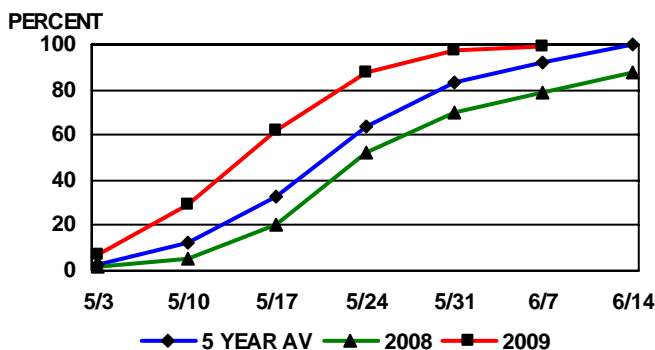
Crop Condition: Nebraska, Week Ending June 7, 2009

Crop	Very Poor	Poor	Fair	Good	Excellent
<i>Percent</i>					
Alfalfa	1	3	21	61	14
Corn	0	1	15	71	13
Oats	0	2	12	75	11
Soybeans	1	1	20	66	12
Wheat	1	4	21	58	16

Livestock, Pasture and Range Report: Pasture and range conditions rated 0 percent very poor, 3 poor, 21 fair, 64 good, and 12 excellent, above last year's 73 percent good or excellent condition.

This release is based on data from FSA county directors, county extension educators, NOAA, and the High Plains Regional Climate Center. County comments and reports can be found at: http://www.nass.usda.gov/Statistics_by_State/Nebraska/Publications/Crop_Progress_&Condition/cmts_cur.htm

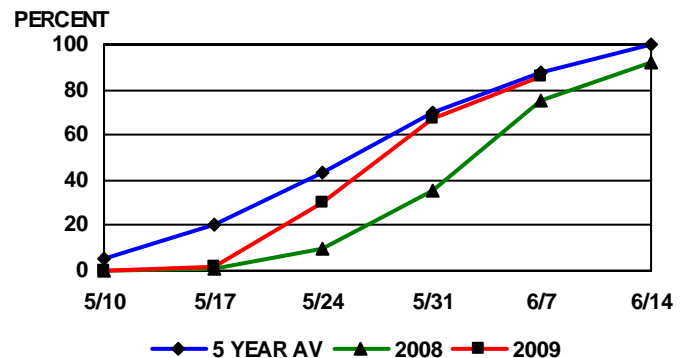
SOYBEANS PLANTED



PROGRESS AS OF SUNDAY

Source: USDA NASS Nebraska Field Office

NEBRASKA WHEAT HEADED



PROGRESS AS OF SUNDAY

Source: USDA NASS Nebraska Field Office

