



Nebraska Weather and Crops

100 Centennial Mall North, Room 298, Lincoln, Nebraska 68508
(402) 437-5541 · (402) 437-5547 FAX · www.nass.usda.gov



Issue NE-CW 2209

Released June 1, 2009

Agricultural Summary: For the week ending May 31, 2009, dry conditions allowed producers to finish up most planting activities but left eastern farmers concerned about the lack of adequate moisture, according to USDA's National Agricultural Statistics Service, Nebraska Field Office. Soybean planting is virtually complete, sorghum is three-quarters planted, and in the west dry bean and proso millet planting were well underway. The first cutting of alfalfa is well ahead of last year. Many eastern producers are irrigating to ensure adequate stands and activate herbicides.

Weather Summary: Temperatures averaged 1 degree below normal and ranged from highs in the 90's to lows in the mid 30's in the Panhandle. The Southwest and South Central Districts averaged over 1.5 inches of precipitation, with only limited amounts recorded in the eastern third of the state.

**Soil Moisture and Days Suitable:
Nebraska, Week Ending May 31, 2009**

	This Week	Last Week	Last Year	Average
<i>Percent</i>				
Topsoil				
Very Short	3	2	3	13
Short	23	28	5	19
Adequate	70	63	69	60
Surplus	4	7	23	8
Subsoil				
Very Short	4	3	6	17
Short	19	16	10	23
Adequate	75	79	71	57
Surplus	2	2	13	3
Days Suitable	5.3	5.9	2.6	4.5

Field Crops Report: Corn conditions rated 0 percent very poor, 0 poor, 11 fair, 73 good, and 16 excellent, above last year's 66 percent good or excellent rating. Corn emerged was 95 percent, ahead of last year's 79 and the 90 average.

Soybeans planted were at 97 percent complete, ahead of last year's 71 and nine days ahead of the 85 average. Soybeans emerged was 73 percent, ahead of last year's 33 and eight days ahead of the 53 average.

Wheat conditions rated 0 percent very poor, 3 poor, 21 fair, 59 good, and 17 excellent, above last year's 63 percent good or excellent condition. Wheat headed is 67 percent complete, well ahead of last year's 35 but near the 70 average.

Alfalfa conditions rated 1 percent very poor, 4 poor, 19 fair, 64 good, and 12 excellent, near last year's 75 percent good or excellent condition. First cutting was 42 percent complete, well ahead of last year's 12 and 35 average. The quality of the first cutting has been good.

Oat conditions rated 0 percent very poor, 2 poor, 11 fair, 74 good, and 13 excellent, above last year's 85 percent good or excellent condition. Oats headed was 24 percent, ahead of last year's 8 and 16 average.

Sorghum planted was 71 percent complete, ahead of last year's 45, and three days ahead of the 64 average. Sorghum emerged was 40 percent, ahead of last year's 10 and five days ahead of the 25 average.

Dry bean planting was 36 percent complete, ahead of last year's 15 and the 28 average. Dry beans emerged were at 16 percent, ahead of last year's 1 and 4 average.

Proso millet planted was at 17 percent, well ahead of last year's 3 and the 10 average.

Crop Progress: Nebraska, Week Ending May 31, 2009

Crop	This Week	Last Week	Last Year	Average
<i>Percent</i>				
Alfalfa 1 st Cutting	42	20	12	38
Corn Emerged	95	77	79	90
Dry Beans Planted	36	20	15	28
Dry Beans Emerged	16		1	4
Oats Headed	24	6	8	16
Proso Millet Planted	17		3	10
Sorghum Planted	71	52	45	64
Sorghum Emerged	40	13	10	25
Soybeans Planted	97	88	71	85
Soybeans Emerged	73	41	33	53
Wheat Headed	67	30	35	70

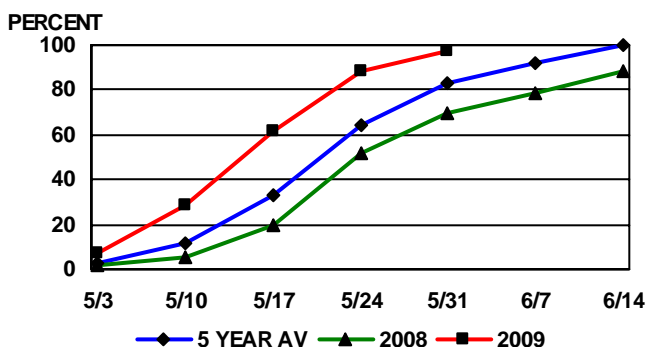
Crop Condition: Nebraska, Week Ending May 31, 2009

Crop	Very Poor	Poor	Fair	Good	Excellent
<i>Percent</i>					
Alfalfa	1	4	19	64	12
Corn	0	0	11	73	16
Oats	0	2	11	74	13
Wheat	0	3	21	59	17

Livestock, Pasture and Range Report: Pasture and range conditions rated 0 percent very poor, 4 poor, 22 fair, 64 good, and 10 excellent, above last year's 72 percent good or excellent conditions.

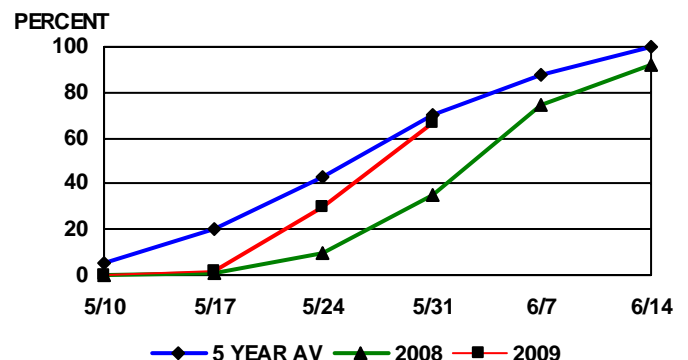
This release is based on data from FSA county directors, county extension educators, NOAA, and the High Plains Regional Climate Center. County comments and reports can be found at: http://www.nass.usda.gov/Statistics_by_State/Nebraska/Publications/Crop_Progress_&_Condition/cmts_cur.htm

SOYBEANS PLANTED



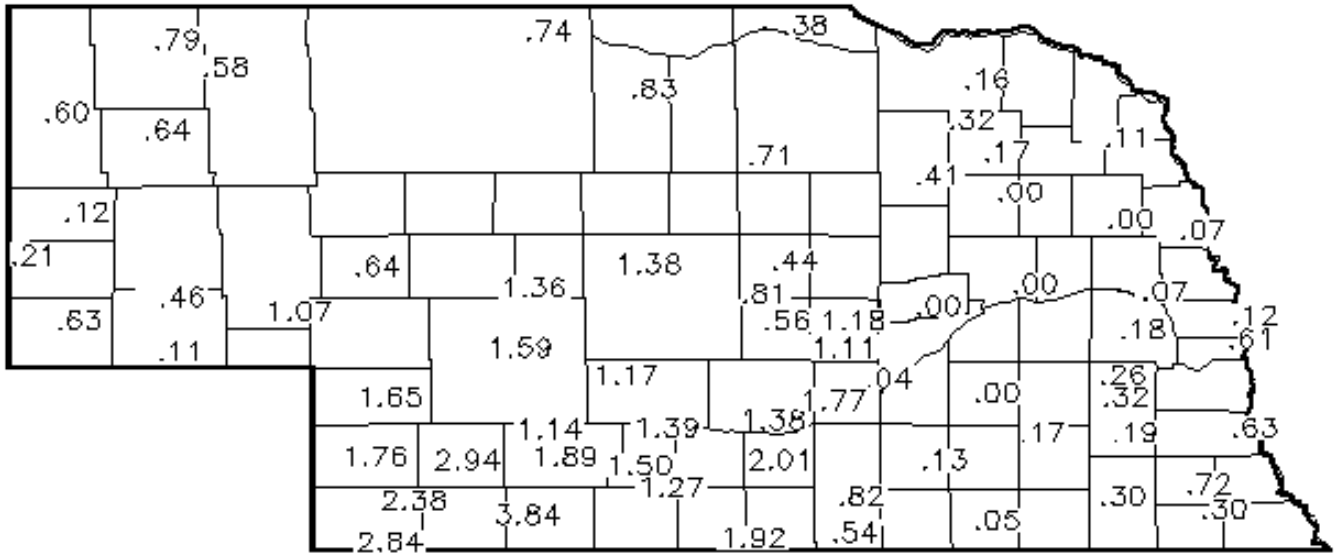
PROGRESS AS OF SUNDAY

WHEAT HEADED



PROGRESS AS OF SUNDAY

Precipitation in Inches for Week Ending 8:00 a.m. May 31, 2009



Precipitation: By District, Nebraska, April 1 – May 31, 2009

Item	NW	NC	NE	CEN	EC	SW	SC	SE
Total past week	.61	.52	.14	.84	.20	2.41	1.50	.37
Total since April 1	5.11	4.16	3.12	4.19	3.43	7.52	5.30	4.60
Normal since April 1	4.77	5.29	6.51	6.17	6.83	5.26	5.89	6.87
Total as % of normal	107%	79%	48%	67%	50%	143%	90%	67%

**Temperature and Growing Degree Days: By Location, Nebraska,
Week Ending Sunday, May 31, 2009**

Station	Temperature				Growing Degree Days Since April 15			
	Extremes		Average	Departure	Last Week	Current	Normal	
	High	Low						
NW	Alliance	87	36	60	-1	92	395	436
	Scottsbluff	88	38	62	+1	98	439	431
	Sidney	85	34	59	-4	85	399	453
NC	Ainsworth	86	46	62	-2	91	429	476
	Arthur	86	40	62	-2	91	413	469
	O'Neill	85	42	63	-2	96	447	483
NE	Concord	90	42	64	-2	101	478	500
	Elgin	88	47	65	-1	107	479	493
	West Point	89	43	65	-2	107	519	518
C	Grand Island	88	42	65	-1	106	542	487
	Lexington	86	41	64	-1	103	506	480
	Ord	88	35	63	-2	104	503	484
EC	Central City	91	39	64	-2	105	550	495
	Lincoln	90	49	67	0	119	615	537
	Mead	89	45	66	-2	110	580	537
SW	Champion	86	43	62	-2	94	451	473
	Dickens	87	42	63	-2	97	450	475
	McCook	89	42	65	+1	108	541	478
SC	Minden	88	43	65	0	105	535	483
	Red Cloud	93	41	66	+1	110	565	492
	Smithfield	86	45	65	0	107	511	481
SE	Beatrice	93	50	67	0	114	586	537
	Clay Center	91	39	65	-1	109	551	492
	Nemaha	87	52	68	0	123	626	543

Source: High Plains Regional Climate Center and Nebraska State Climate Office