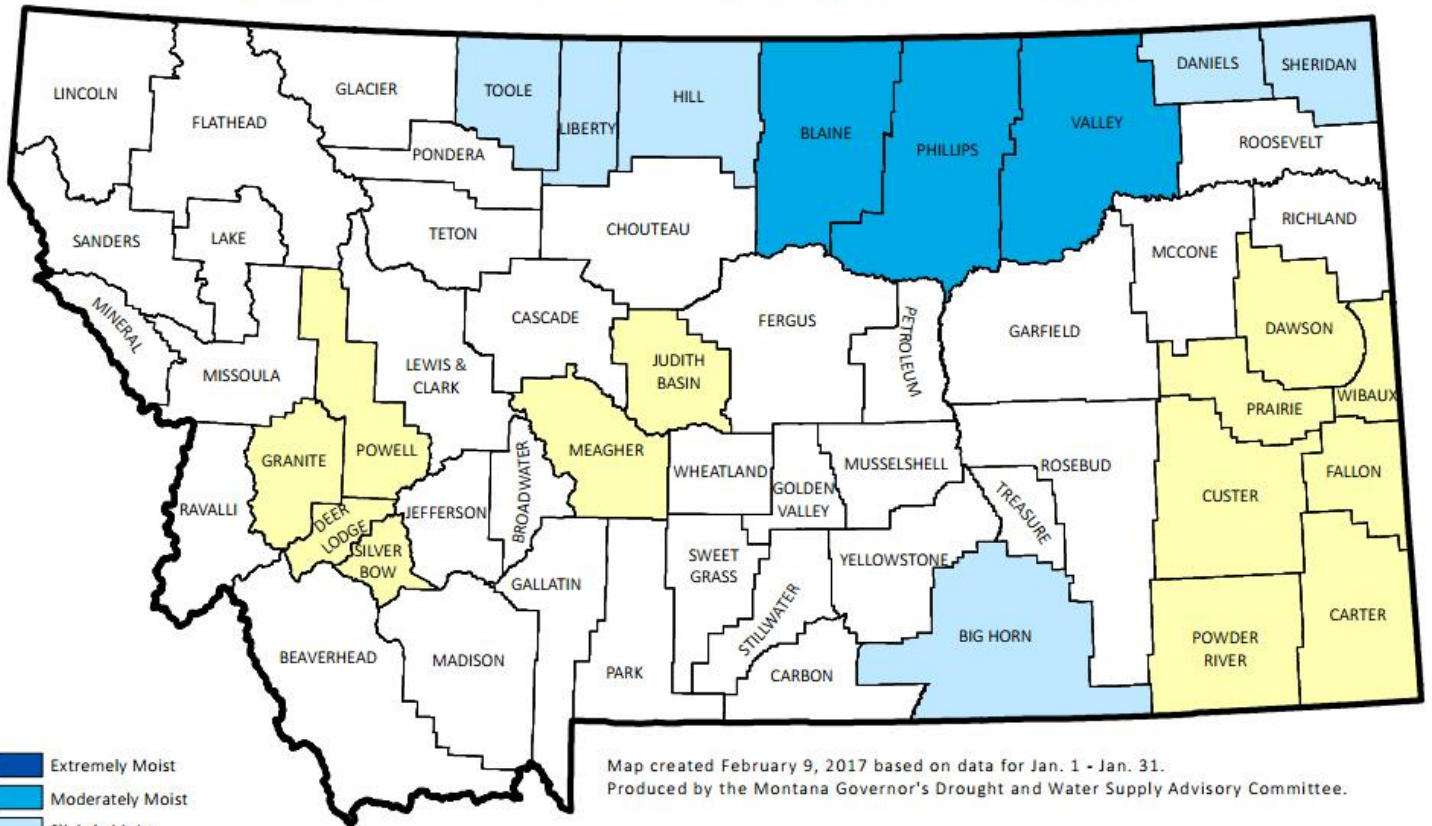


Weather Information for the Month Ending 02/28/2017

Station ID	Temperature				Precipitation January			Precipitation October 1 to date		
	High	Low	Avg	DFN	Total	DFN	% Nrm	Total	DFN	% Nrm
NORTHWEST										
Alberton	50	-10	28	-1	3.15	+2.44	443	11.04	+6.32	233
Corvallis	56	-7	31	+0	1.29	+0.79	258	5.50	+1.98	156
Creston	47	-15	24	-3	2.61	+1.50	235	11.34	+4.53	166
Deer Lodge	57	-11	30	+3	0.40	+0.14	153	2.40	+0.48	125
Hamilton	47	-5	29	-1	1.60	+0.80	200	5.86	+0.91	118
Heron	45	1	29	-1	6.73	+3.56	212	24.48	+5.71	130
Kalispell	45	-16	24	-3	2.44	+1.37	228	10.66	+4.04	161
Libby	47	4	30	+4	2.25	+0.14	106	12.92	+0.14	101
Missoula	47	-8	29	+0	2.04	+1.33	287	7.74	+3.02	163
Olney	44	-19	20	-3	1.05	-0.84	55	9.99	-0.38	96
Polson	45	-16	23	-8	2.18	+1.36	265	9.50	+4.18	178
Saint Ignatius	60	-16	28	-3	1.47	+0.76	207	6.58	+1.61	132
Seeley Lake	57	-24	26	+1	1.37	-0.18	88	8.10	-2.08	79
Superior	48	-5	30	-2	1.74	+0.68	164	11.39	+4.40	162
Thompson Falls	46	-2	30	-3	3.47	+1.57	182	13.90	+2.30	119
Yaak	47	-18	23	-6	5.73	+2.77	193	17.47	-2.31	88
NORTH CENTRAL										
Brady	59	-14	25	+1	0.47	+0.16	151	4.88	+2.61	214
Bynum	61	-18	23	-3	0.54	+0.13	131	3.21	+0.64	124
Chester	64	-23	24	+2	0.85	+0.61	354	5.22	+3.37	282
Chinook	66	-17	25	+6	0.11	-0.18	37	5.14	+2.69	209
Choteau	63	-21	25	-3	0.40	+0.23	235	3.39	+1.99	242
Cut Bank	55	-27	22	-2	0.71	+0.45	273	2.43	+0.58	131
Dunkirk	57	-25	21	-3	0.23	-0.06	79	3.09	+0.72	130
Fort Assiniboine	64	-23	25	+3	0.60	+0.31	206	5.33	+2.81	211
Fort Benton	68	-14	27	-1	0.55	+0.20	157	4.31	+1.56	156
Fort Belknap	67	-18	25	+4	0.49	+0.19	163	6.39	+4.34	311
Goldbutte	59	-18	25	+1	0.27	-0.02	93	2.94	+0.57	124
Havre	64	-23	26	+4	0.60	+0.28	187	5.58	+3.22	236
Heart Butte	50	-25	19	-4	0.68	-1.32	34	4.16	-9.12	31
Loma	67	-14	27	+2	0.78	+0.44	229	5.84	+3.17	218
Port of Morgan	53	-38	20	+1	0.47	+0.32	313	8.06	+6.67	579
Malta	64	-13	27	+9	0.58	+0.32	223	7.86	+5.55	340
Rudyard	62	-22	24	+1	0.70	+0.54	437	3.78	+2.40	273
Saco	65	-21	25	+7	0.51	+0.23	182	6.93	+4.68	308
Shelby	61	-23	23	-1	0.48	+0.19	165	4.04	+1.81	181
Turner	61	-25	24	+6	0.56	+0.40	350	5.79	+3.97	318
Zortman	63	-10	26	+1	0.49	+0.22	181	8.45	+6.02	347
NORTHEAST										
Bredette	56	-28	21	+2	0.49	+0.29	244	4.20	+2.32	223
Brockway	66	-11	28	+5	0.24	+0.08	150	2.21	+0.53	131
Circle	66	-16	26	+3	0.41	+0.09	128	2.54	+0.02	100
Culbertson	55	-25	21	+2	0.43	+0.22	204	3.34	+1.20	156
Glasgow	56	-16	24	+5	0.57	+0.33	237	4.29	+2.24	209
Glendive	60	-10	27	+5	0.47	+0.18	162	2.73	+0.16	106
Jordan	67	-4	29	+7	0.46	+0.14	143	4.30	+1.66	162
Nashua	55	-16	24	+1	0.39	+0.22	229	3.65	+1.82	199
Plentywood	55	-24	20	+2	0.66	+0.39	244	5.82	+3.74	279
Saint Marie	57	-15	23	+4	0.26	+0.02	108	2.92	+0.87	142
Savage	57	-22	25	+3	0.16	-0.10	61	2.62	+0.14	105
Scobey	57	-26	20	+4	0.30	+0.18	250	3.31	+1.63	197
Sidney	57	-11	23	+1	0.38	+0.06	118	4.79	+1.95	168
Wolf Point	51	-23	21	+2	0.22	-0.01	95	2.20	+0.09	104
CENTRAL										
Denton	66	-15	27	+4	0.48	+0.18	160	4.58	+1.90	170
Grass Range	70	-14	30	+2	0.30	+0.03	111	7.32	+4.10	227
Great Falls	64	-13	27	+1	0.44	-0.03	93	4.16	+0.83	124
Harlowton	59	-14	27	+0	0.60	+0.25	171	3.72	+1.16	145
Helena	56	-16	26	+0	0.67	+0.33	197	4.12	+1.67	168
Holter Dam	57	-11	30	-1	0.48	+0.23	192	3.49	+1.33	161
Judith Gap	62	-10	25	+0	0.75	+0.36	192	4.73	+1.84	163
Lewistown	66	-15	27	+2	0.57	+0.05	109	5.11	+1.08	126
Melstone	66	-4	29	+1	0.61	+0.23	160	3.28	+0.07	102
Millegan	55	-19	24	+0	0.57	+0.12	126	5.78	+1.39	131
Neihart	63	-14	27	-1	0.48	-0.12	80	4.28	-0.65	86
Roundup	68	-11	30	+0	0.88	+0.56	275	5.85	+3.29	228
Ryegate	61	-13	29	+1	0.56	+0.27	193	4.16	+1.62	163
Stanford	67	-17	27	-1	0.38	-0.06	86	4.81	+1.40	141
Townsend	58	-12	29	+0	0.27	+0.06	128	2.66	+0.75	139
Valentine	71	-15	27	+4	0.41	+0.13	146	6.30	+3.66	238
White Sulphur Springs	61	-13	29	+4	0.64	+0.30	188	4.49	+1.80	166
SOUTHWEST										
Boulder	56	-19	29	+2	0.24	-0.02	92	2.29	+0.04	101
Bozeman	57	-17	30	+2	0.88	+0.24	137	7.51	+2.56	151
Butte	50	-23	26	+4	0.62	+0.19	144	4.03	+1.16	140
Dillon	50	-16	30	+3	0.16	-0.02	88	2.76	+1.11	167
Divide	50	-16	29	+7	0.42	+0.04	110	3.58	+0.96	136
Ennis	55	-22	31	+3	0.50	+0.09	121	4.74	+1.80	161
Logan	58	-23	26	+1	0.47	-0.03	94	3.77	+0.20	105
Twin Bridges	50	-16	29	+2	0.30	+0.14	187	3.44	+1.88	220
West Yellowstone	46	-26	23	+6	3.92	+2.27	237	17.66	+8.41	190
Wisdom	48	-29	22	+5	0.76	+0.29	161	5.14	+1.81	154
SOUTH CENTRAL										
Big Timber	62	-22	29	+0	1.09	+0.63	236	6.82	+2.96	176
Billings	62	-7	31	+1	1.09	+0.57	209	7.02	+3.03	175
Busby	55	-26	25	+1	0.33	-0.17	66	6.00	+1.89	145
Gardiner	51	-8	30	+2	0.37	+0.08	127	6.87	+4.39	277
Hardin	64	-20	28	-1	0.37	+0.05	115	7.19	+3.93	220
Huntley	64	-23	26	-1	0.86	+0.42	195	5.73	+2.34	169
Hysham	64	-14	30	+3	0.43	+0.13	143	5.22	+2.20	172
Joliet	61	-17	27	+0	0.99	+0.42	173	6.05	+1.87	144
Livingston	61	-20	31	+1	1.13	+0.69	256	5.94	+2.39	167
Melville	60	-20	26	+1	1.03	+0.57	223	5.31	+1.80	151
Pompey's Pillar	62	-16	26	-1	0.41	-0.01	97	4.66	+1.17	133
Rapelje	62	-16	29	+0	0.80	+0.30	160	4.65	+1.06	129
Red Lodge	58	-13	29	+3	0.87	-0.09	90	7.43	+0.64	109
Wilsall	61	-15	31	+4	1.27	+0.59	186	6.33	+1.38	127
Yellowtail	62	-7	30	-4	0.98	+0.32	148	6.44	+1.25	124
SOUTHEAST										
Baker	60	-11	25	+3	0.15	-0.25	37	1.96	-1.22	61
Biddle	62	-10	32	+6	0.34	-0.03	91	1.69	-1.46	53
Brandenburg	64	-11	29	+1	0.22	-0.22	50	3.33	-0.39	89
Broadus	61	-6	28	+1	0.30	-0.07	81	1.97	-1.20	62
Colstrip	69	-8	30	+3	0.31	-0.08	79	4.13	+0.71	120
Ekalaka	65	-8	29	+4	0.21	-0.28	42	3.23	-0.76	80
Forsyth	65	-10	29	+2	0.33	-0.02	94	4.07	+0.85	126
Miles City	61	-6	28	+4	0.39	+0.07	121	1.95	-0.95	67
Mizpah	61	-14	26	+2	0.18	-0.09	66	2.70	-0.03	98
Plevna	59	-15	26	+4	0.30	-0.10	74	2.44	-0.74	76
Ridgeway	64	-11	28	+5	0.16	-0.15	51	3.95	+0.96	132
Terry	61	-4	26	+3	0.30	+0.08	136	2.30	+0.18	108
Wibaux	56	-13	23	+3	0.20	-0.06	76	2.48	+0.04	101

Montana Drought Status by County - February 1, 2017

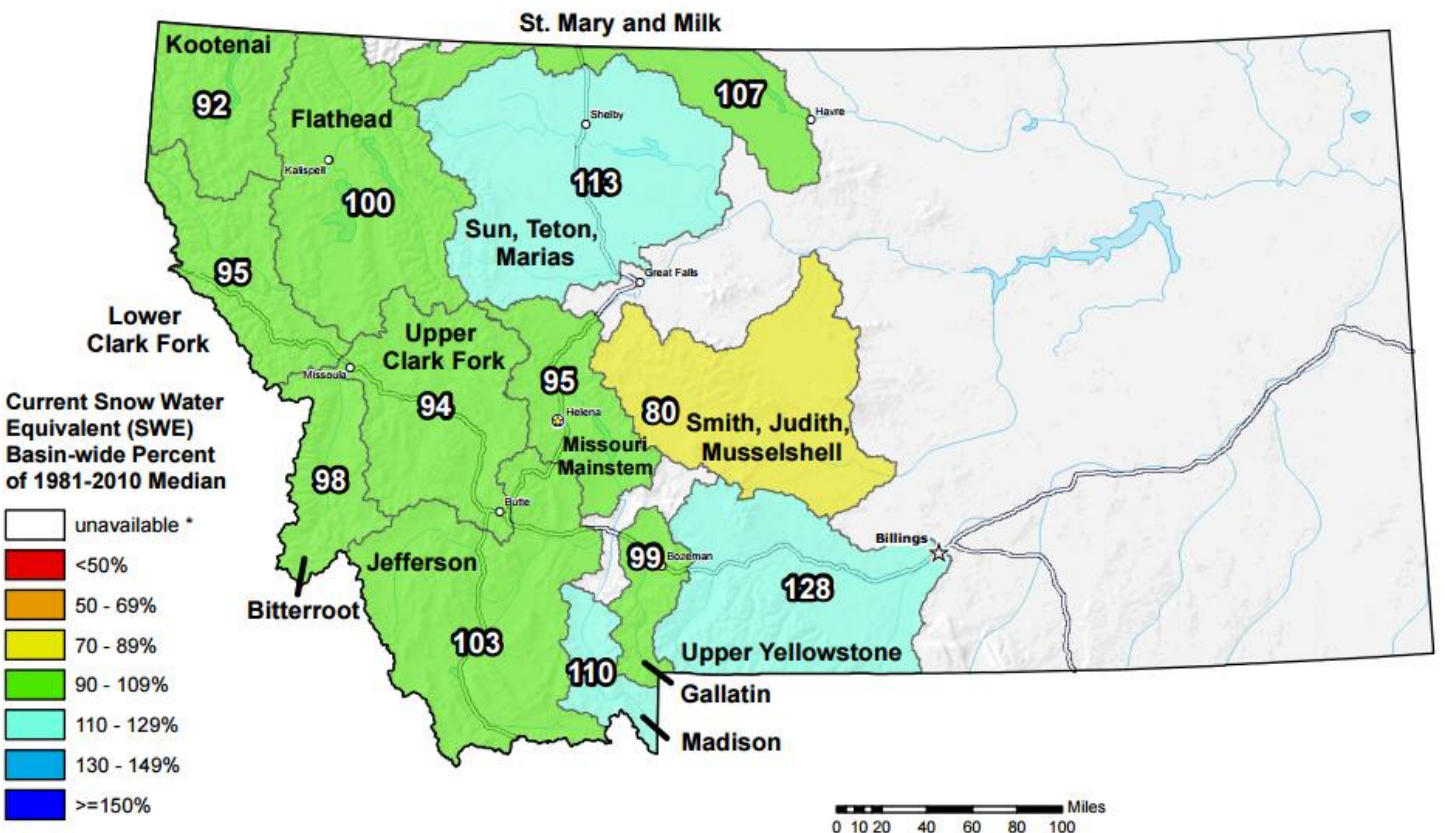


More information: <http://drought.mt.gov>

<http://nris.mt.gov/drought>

Montana SNOTEL Current Snow Water Equivalent (SWE) % of Normal

Feb 27, 2017



**Provisional Data
Subject to Revision**



The snow water equivalent percent of normal represents the current snow water equivalent found at selected SNOTEL sites in or near the basin compared to the average value for those sites on this day. Data based on the first reading of the day (typically 00:00).

Prepared by:
USDA/NRCS National Water and Climate Center
Portland, Oregon
<http://www.wcc.nrcs.usda.gov>