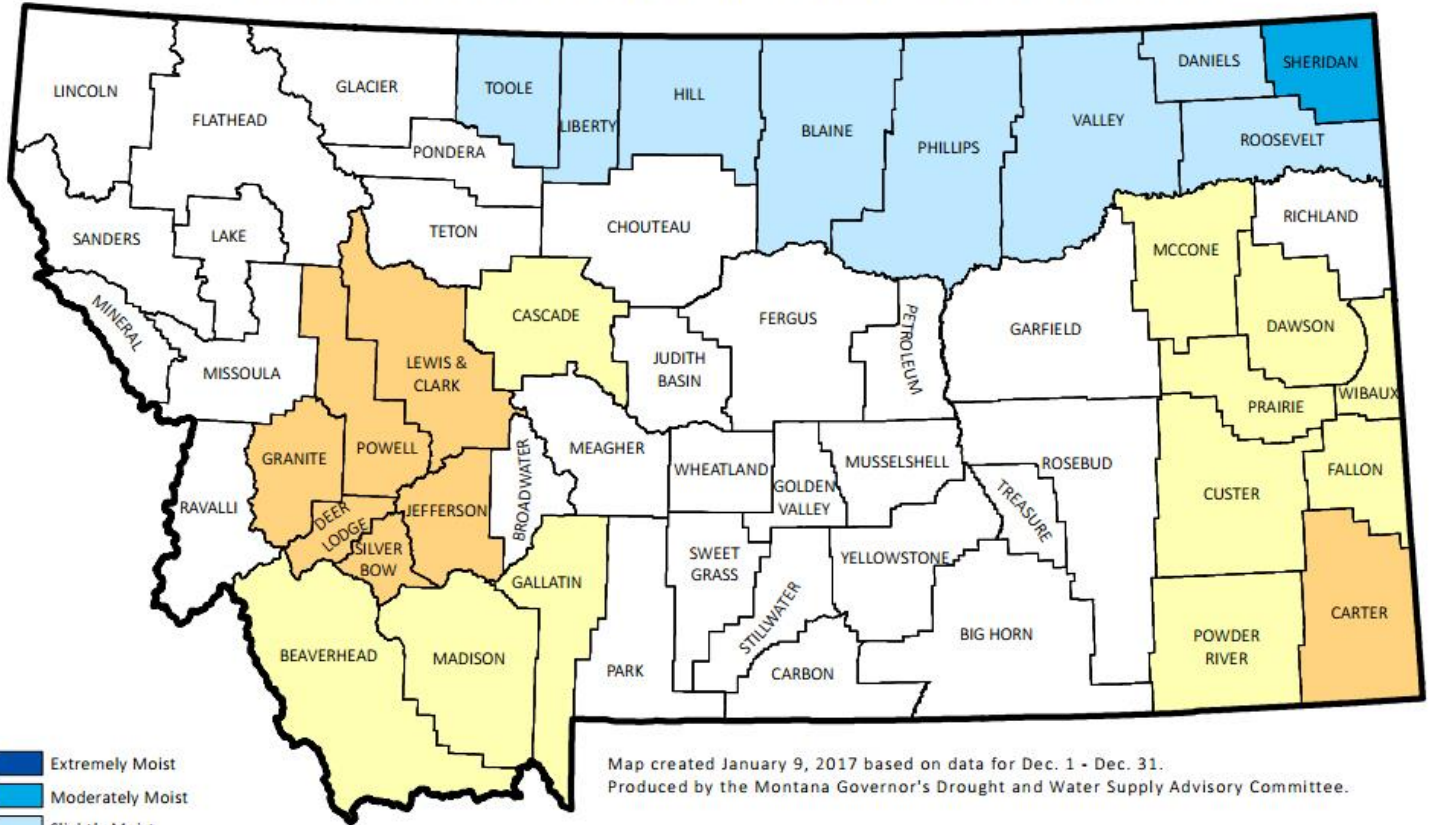


Weather Information for the Month Ending 01/31/2017

Station ID	Temperature				Precipitation January			Precipitation October 1 to date		
	High	Low	Avg	DFN	Total	DFN	% Nrm	Total	DFN	% Nrm
NORTHWEST										
Alberton	39	-20	14	-9	1.26	+0.26	126	7.57	+3.62	191
Corvallis	50	-18	14	-12	0.68	+0.01	101	4.02	+1.04	134
Creston	40	-23	13	-10	0.91	-0.33	73	8.74	+3.12	155
Deer Lodge	52	-28	12	-11	0.19	-0.12	61	1.91	+0.27	116
Hamilton	37	-17	13	-12	0.70	-0.35	66	4.26	+0.17	104
Heron	39	-10	20	-6	1.84	-2.17	45	17.75	+2.41	115
Kalispell	40	-22	14	-7	0.97	-0.42	69	8.22	+2.75	150
Libby	42	-26	19	-2	1.01	-1.61	38	8.91	-1.58	84
Missoula	38	-19	13	-10	0.92	-0.08	92	5.67	+1.72	143
Olney	38	-24	10	-8	0.22	-2.01	9	8.94	+0.62	107
Polson	39	-22	14	-12	0.91	-0.14	86	7.31	+2.87	164
Saint Ignatius	41	-12	14	-13	0.86	-0.07	92	4.81	+0.61	114
Seeley Lake	40	-25	12	-8	0.75	-1.55	32	6.61	-1.88	77
Superior	42	-15	21	-6	1.08	-0.32	77	9.63	+3.78	164
Thompson Falls	41	-10	20	-8	1.08	-1.35	44	10.27	+0.73	107
Yaak	38	-26	13	-11	0.89	-3.06	22	11.74	-4.82	70
NORTH CENTRAL										
Brady	48	-28	15	-3	1.11	+0.73	292	4.37	+2.43	225
Bynum	56	-15	18	-3	0.66	+0.17	134	2.56	+0.42	119
Chester	45	-38	11	-5	0.86	+0.50	238	4.34	+2.75	272
Chinook	53	-29	12	-1	0.06	-0.46	11	5.02	+2.88	234
Choteau	52	-28	17	-6	0.55	+0.30	220	2.75	+1.52	223
Cut Bank	51	-29	17	-2	0.35	-0.02	94	1.72	+0.15	109
Dunkirk	51	-33	12	-8	0.31	-0.09	77	2.85	+0.79	138
Fort Assiniboine	46	-29	13	-1	0.65	+0.19	141	4.69	+2.48	212
Fort Benton	55	-30	14	-9	0.82	+0.29	154	3.67	+1.29	154
Fort Belknap	49	-25	12	-1	0.31	-0.08	79	5.89	+4.16	340
Goldbutte	50	-16	18	-2	0.22	-0.18	54	2.66	+0.60	129
Havre	46	-29	14	+0	0.65	+0.20	144	4.94	+2.92	244
Heart Butte	43	-24	13	-6	0.25	-2.64	8	3.48	-7.62	31
Loma	54	-36	12	-7	0.98	+0.40	168	5.01	+2.70	216
Port of Morgan	43	-30	10	-1	0.55	+0.40	366	7.62	+6.40	624
Malta	52	-26	13	+3	0.36	+0.00	100	7.18	+5.15	353
Rudyard	48	-34	10	-7	0.67	+0.42	268	3.08	+1.86	252
Saco	48	-32	10	+0	0.39	+0.06	118	6.42	+4.47	329
Shelby	52	-29	13	-6	0.94	+0.52	223	3.50	+1.58	182
Turner	47	-24	13	+1	0.22	-0.07	75	5.23	+3.57	315
Zortman	56	-15	16	-4	0.65	+0.17	135	7.88	+5.74	368
NORTHEAST										
Bredette	39	-26	9	-2	0.25	-0.03	89	3.71	+2.03	220
Brockway	46	-23	13	-2	0.47	+0.24	204	1.97	+0.45	129
Circle	44	-25	12	-4	0.31	-0.09	77	2.13	-0.05	97
Culbertson	39	-29	10	+0	0.36	+0.07	124	2.91	+1.00	152
Glasgow	39	-29	9	-2	0.57	+0.24	172	3.72	+1.93	207
Glendive	41	-26	12	-2	0.38	-0.01	97	2.26	+0.00	100
Jordan	47	-33	14	+0	0.54	+0.05	110	3.82	+1.52	166
Nashua	39	-29	10	-5	0.37	+0.08	127	3.26	+1.60	196
Plentywood	42	-25	7	-2	0.43	+0.11	134	5.16	+3.37	288
Saint Marie	42	-24	12	+1	0.10	-0.23	30	2.66	+0.87	148
Savage	39	-27	11	-3	0.07	-0.26	21	1.90	-0.30	86
Scobey	41	-30	10	+2	0.17	-0.09	65	3.23	+1.67	207
Sidney	39	-27	10	-3	0.51	+0.12	130	4.04	+1.54	161
Wolf Point	39	-24	9	-2	0.11	-0.32	25	1.98	+0.12	106
CENTRAL										
Denton	48	-18	15	-2	0.22	-0.26	45	4.05	+1.69	171
Grass Range	55	-15	19	-4	0.57	-0.19	74	6.95	+4.03	238
Great Falls	49	-21	17	-5	0.67	+0.03	104	3.60	+0.78	127
Harlowton	48	-19	16	-7	0.21	-0.22	48	2.96	+0.77	135
Helena	39	-16	10	-10	0.46	-0.04	92	3.44	+1.35	164
Holter Dam	47	-14	17	-10	0.34	-0.05	87	2.99	+1.10	158
Judith Gap	49	-16	17	-4	0.17	-0.44	27	3.98	+1.52	161
Lewistown	48	-17	16	-5	0.11	-0.74	12	4.51	+1.04	129
Melstone	46	-33	14	-9	0.28	-0.30	48	2.55	-0.26	90
Millegan	48	-18	12	-8	0.32	-0.59	35	5.21	+1.31	133
Neihart	48	-22	16	-8	0.45	-0.44	50	3.73	-0.54	87
Roundup	51	-15	20	-4	0.24	-0.17	58	4.95	+2.73	222
Ryegate	49	-20	17	-6	0.11	-0.37	22	3.30	+1.07	147
Stanford	54	-21	19	-5	0.52	-0.13	80	4.31	+1.38	147
Townsend	44	-21	11	-12	0.23	-0.10	69	2.38	+0.70	141
Valentine	51	-27	14	-1	0.46	-0.12	79	5.81	+3.49	250
White Sulphur Springs	49	-14	17	-4	0.38	-0.07	84	3.82	+1.49	163
SOUTHWEST										
Boulder	43	-24	12	-10	0.19	-0.19	50	1.99	+0.02	101
Bozeman	45	-21	16	-8	0.44	-0.36	54	6.33	+2.06	148
Butte	44	-32	9	-8	0.17	-0.34	33	3.41	+0.99	140
Dillon	50	-22	16	-6	0.06	-0.20	23	2.60	+1.13	176
Divide	50	-22	15	-3	0.10	-0.34	22	3.16	+0.94	142
Ennis	42	-24	15	-9	0.29	-0.15	65	4.24	+1.73	168
Logan	34	-24	8	-10	0.26	-0.32	44	3.20	+0.15	104
Twin Bridges	50	-22	15	-7	0.09	-0.13	40	3.13	+1.73	223
West Yellowstone	33	-40	7	-6	1.92	+0.08	104	13.73	+6.25	183
Wisdom	37	-46	3	-11	0.33	-0.25	56	4.19	+1.37	148
SOUTH CENTRAL										
Big Timber	50	-17	21	-3	0.41	-0.20	67	5.29	+1.93	157
Billings	47	-10	18	-6	0.35	-0.42	45	5.91	+2.48	172
Busby	42	-21	11	-8	0.51	-0.17	75	5.51	+1.94	154
Gardiner	41	-36	13	-10	0.37	+0.02	105	6.13	+3.96	282
Hardin	46	-20	12	-11	0.98	+0.40	168	6.64	+3.73	228
Huntley	47	-24	13	-7	0.32	-0.25	56	4.82	+1.89	164
Hysham	46	-22	14	-7	0.59	+0.10	120	4.74	+2.04	175
Joliet	48	-24	13	-9	0.38	-0.32	54	4.96	+1.39	138
Livingston	48	-17	21	-4	0.35	-0.25	58	4.81	+1.74	156
Melville	50	-22	16	-6	0.46	-0.12	79	4.05	+1.04	134
Pompey's Pillar	46	-26	12	-8	0.54	-0.04	93	4.20	+1.15	137
Rapelje	50	-14	18	-6	0.23	-0.36	38	3.60	+0.55	118
Red Lodge	56	-22	18	-5	0.57	-0.66	46	6.35	+0.60	110
Wilsall	48	-19	19	-4	0.50	-0.37	57	4.96	+0.75	117
Yellowtail	46	-5	19	-10	0.57	-0.25	69	5.18	+0.69	115
SOUTHEAST										
Baker	44	-23	11	-5	0.07	-0.46	13	1.81	-0.95	65
Biddle	47	-23	15	-5	0.14	-0.30	31	1.35	-1.41	48
Brandenberg	44	-27	12	-9	0.41	-0.20	67	3.00	-0.24	92
Broadus	41	-20	11	-10	0.04	-0.43	8	1.65	-1.13	59
Colstrip	49	-17	17	-5	0.68	+0.12	121	3.80	+0.79	126
Ekalaka	49	-25	13	-6	0.23	-0.32	41	2.93	-0.53	84
Forsyth	47	-19	13	-7	0.56	+0.11	124	3.72	+0.87	130
Miles City	41	-20	11	-6	0.04	-0.44	8	1.53	-1.03	59
Mizpah	41	-32	9	-7	0.29	-0.14	67	2.48	+0.04	101
Plevna	43	-31	10	-6	0.42	-0.11	79	2.09	-0.67	75
Ridgeway	41	-26	10	-6	0.35	-0.09	79	3.74	+1.08	140
Terry	39	-23	9	-6	0.37	+0.08	127	2.00	+0.12	106
Wibaux	42	-25	11	-2	0.11	-0.16	40	2.28	+0.12	105

Montana Drought Status by County - January 1, 2017



- Extremely Moist
- Moderately Moist
- Slightly Moist
- Near Average
- Slightly Dry (D0)
- Moderately Dry (D1) - Drought Alert
- Severely Dry (D2)
- Extremely Dry (D3) - Severe Drought
- Exceptionally Dry (D4)

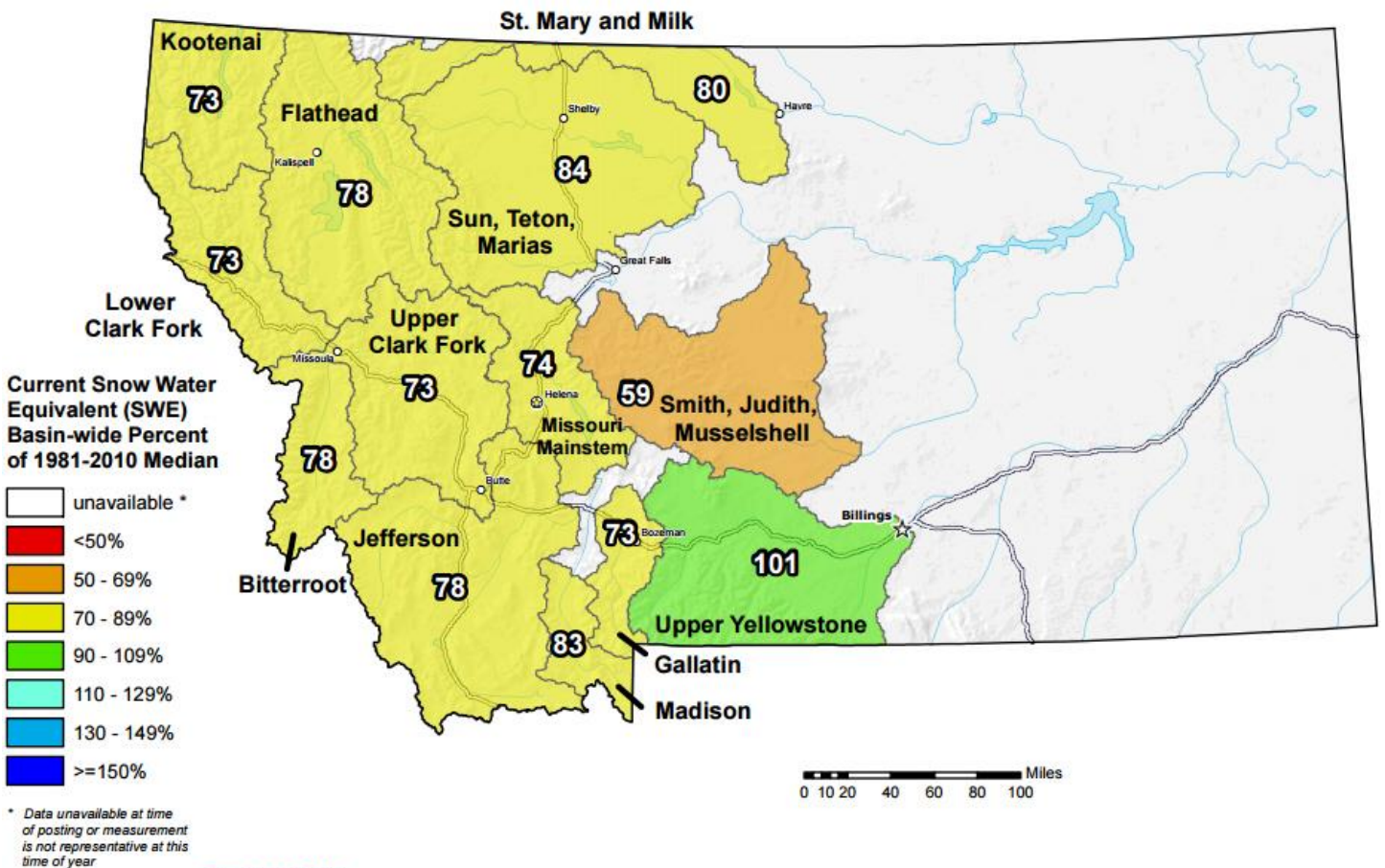


More information: <http://drought.mt.gov>

<http://nris.mt.gov/drought>

Montana SNOTEL Current Snow Water Equivalent (SWE) % of Normal

Jan 29, 2017



**Provisional Data
Subject to Revision**



The snow water equivalent percent of normal represents the current snow water equivalent found at selected SNOTEL sites in or near the basin compared to the average value for those sites on this day. Data based on the first reading of the day (typically 00:00).

Prepared by:
USDA/NRCS National Water and Climate Center
Portland, Oregon
<http://www.wcc.nrcs.usda.gov>