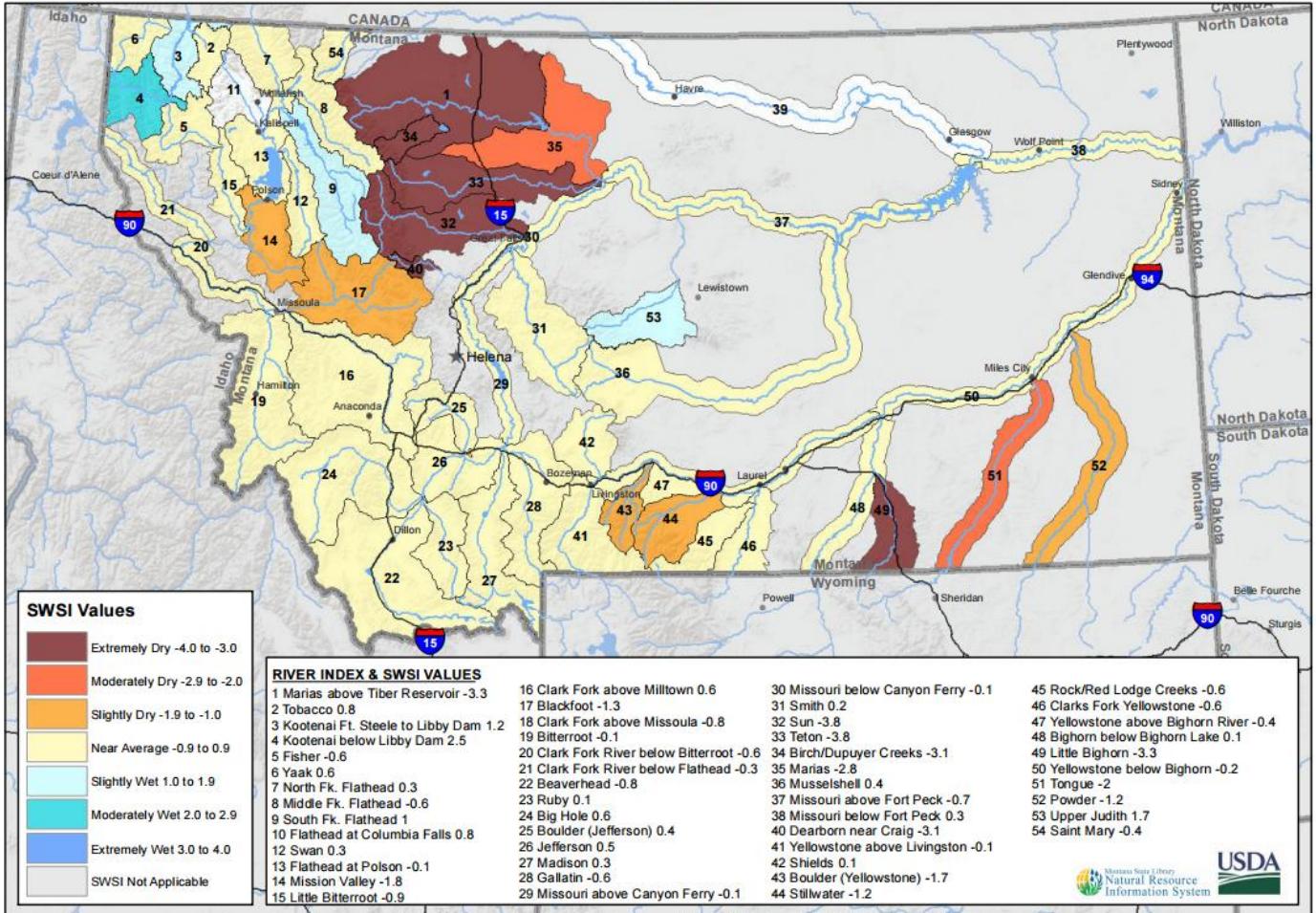


Weather Information for the Week ending 04/10/2016

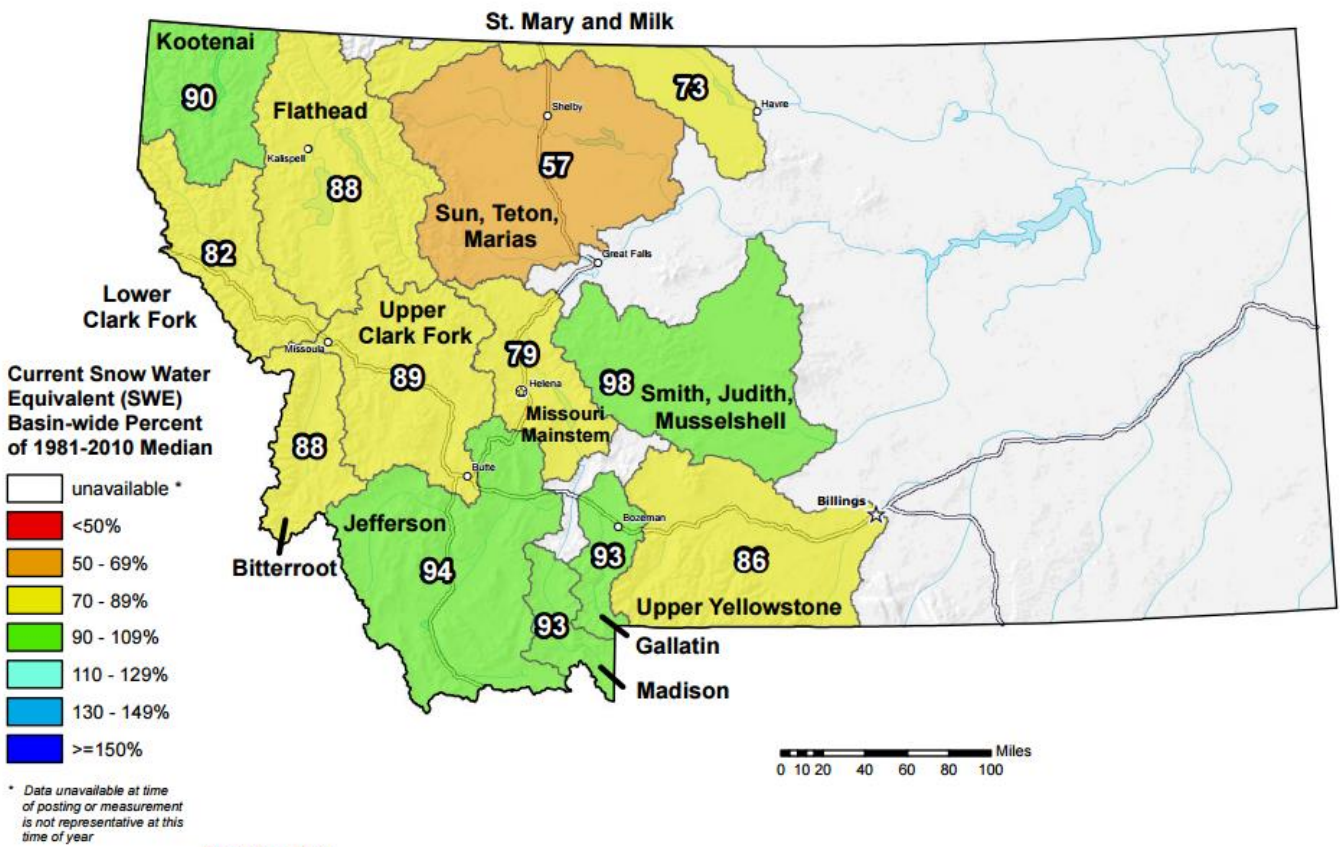
Station ID	Temperature			GDDs		This Week		Precipitation			October 1 to Date		
	Hi	LOW	AVG	B50	DFN	Total	DFN	April 1 to Date			Total	DFN	%NRM
								Total	DFN	%NRM			
NORTHWEST													
Alberton	80	29	50	20	+20	0.06	-0.15	0.06	-0.24	20	9.65	+3.59	159
Corvallis	80	30	50	13	+13	0.05	-0.16	0.05	-0.25	17	4.56	-0.01	100
Creston	76	29	50	12	+12	0.01	-0.34	0.01	-0.49	2	8.08	-0.67	92
Deer Lodge	74	24	46	2	+2	0.11	-0.01	0.11	-0.04	73	2.91	+0.32	112
Hamilton	81	31	51	21	+21	0.32	+0.11	0.36	+0.06	120	7.52	+1.28	121
Heron	75	30	50	13	+13	0.13	-0.36	0.13	-0.57	19	24.98	+2.62	112
Kalispell	76	27	50	13	+13	0.02	-0.26	0.02	-0.35	5	7.66	-0.53	94
Libby	74	31	49	17	+17	0.13	-0.21	0.13	-0.36	27	17.42	+2.17	114
Missoula	77	26	50	19	+19	0.00	-0.21	0.01	-0.29	3	3.75	-2.31	62
Olney	73	22	46	2	+2	0.05	-0.23	0.05	-0.35	13	9.63	-2.61	79
Polson	74	30	50	15	+15	0.10	-0.18	0.10	-0.30	25	11.50	+4.64	168
Saint Ignatius	78	32	52	23	+23	0.00	-0.28	0.01	-0.39	3	5.81	-0.83	88
Seeley Lake	76	26	49	15	+15	0.11	-0.10	0.11	-0.19	37	8.31	-3.55	70
Superior	83	32	51	23	+23	0.20	-0.05	0.20	-0.17	54	15.56	+6.84	178
Thompson Falls	78	32	52	24	+21	0.06	-0.27	0.06	-0.42	13	12.25	-1.76	87
Yaak	80	25	47	13	+13	0.03	-0.60	0.03	-0.85	3	14.77	-8.84	63
NORTH CENTRAL													
Brady	74	27	49	4	+4	0.26	+0.06	0.26	+0.00	100	2.85	-0.49	85
Bynum	78	33	50	11	+11	0.01	-0.20	0.07	-0.23	23	2.60	-1.02	72
Chester	75	27	48	6	+6	0.28	+0.14	0.32	+0.12	160	3.85	+1.25	148
Chinook	74	28	48	6	+6	0.55	+0.38	0.55	+0.32	239	3.23	-0.08	98
Choteau	80	24	50	17	+17	0.00	-0.13	0.00	-0.16	0	1.76	-0.18	91
Cut Bank	78	27	48	10	+10	0.04	-0.10	0.04	-0.16	20	1.36	-1.30	51
Dunkirk	76	25	48	5	+5	0.14	-0.07	0.14	-0.16	47	1.68	-1.77	49
Fort Assinniboine	73	28	48	4	+4	0.44	+0.25	0.44	+0.19	176	4.11	+0.61	117
Fort Benton	77	27	50	9	+9	0.36	+0.13	0.38	+0.06	119	4.15	+0.15	104
Fort Belknap	72	27	47	2	+2	1.26	+1.12	1.27	+1.10	747	4.55	+1.91	172
Goldbutte	75	21	48	8	+8	0.41	+0.20	0.41	+0.11	137	4.96	+1.51	144
Havre	74	28	50	14	+14	0.38	+0.23	0.39	+0.18	186	3.66	+0.32	110
Heart Butte	77	28	48	5	+5	0.07	-0.33	0.07	-0.51	12	5.35	-10.77	33
Loma	76	27	50	10	+10	0.39	+0.18	0.47	+0.17	157	5.09	+1.28	134
Malta	71	31	48	4	+4	0.44	+0.30	0.44	+0.24	220	3.63	+0.46	115
Port of Morgan	67	26	45	1	+1	0.52	+0.45	0.52	+0.42	520	4.05	+2.23	223
Rudyard	73	27	47	3	+3	0.15	+0.03	0.21	+0.06	140	2.18	+0.20	110
Saco	73	25	45	0	+0	0.45	+0.31	0.46	+0.26	230	3.79	+0.68	122
Shelby	80	24	48	10	+10	0.14	-0.07	0.14	-0.15	48	2.84	-0.41	87
Turner	69	23	46	1	+1	0.34	+0.27	0.34	+0.24	340	3.00	+0.64	127
Zortman	66	27	45	0	+0	0.42	+0.21	0.44	+0.14	147	6.04	+2.42	167
NORTHEAST													
Bredette	68	18	41	2	+2	0.06	-0.08	0.06	-0.14	30	3.00	+0.37	114
Brockway	71	23	47	5	+5	0.20	+0.01	0.20	-0.05	80	2.81	+0.39	116
Circle	69	23	47	4	+4	0.25	+0.04	0.25	-0.05	83	3.59	+0.04	101
Culbertson	70	18	46	5	+5	0.03	-0.13	0.03	-0.19	14	2.19	-0.73	75
Glasgow	71	27	46	2	+2	0.28	+0.14	0.28	+0.08	140	4.36	+1.59	157
Glendive	71	32	49	10	+10	0.11	-0.10	0.11	-0.19	37	2.02	-1.51	57
Jordan	74	27	48	9	+9	0.26	+0.08	0.33	+0.09	138	5.83	+2.26	163
Nashua	69	26	47	2	+2	0.21	+0.03	0.21	-0.03	87	3.28	+0.74	129
Plentywood	68	20	41	0	+0	0.11	-0.03	0.11	-0.09	55	3.42	+0.44	115
Saint Marie	68	26	46	1	+1	0.19	+0.05	0.19	-0.01	95	3.30	+0.53	119
Savage	71	23	46	4	+4	0.08	-0.13	0.08	-0.22	27	1.76	-1.64	52
Scobey	64	24	45	0	+0	0.15	-0.02	0.15	-0.08	65	2.87	+0.36	114
Sidney	71	26	47	5	+5	0.05	-0.16	0.05	-0.25	17	2.34	-1.45	62
Wolf Point	73	22	47	7	+7	0.05	-0.09	0.05	-0.15	25	2.93	+0.07	102
CENTRAL													
Denton	73	29	49	8	+8	0.30	+0.09	0.34	+0.04	113	5.26	+1.49	140
Grass Range	74	30	50	8	+8	0.13	-0.15	0.13	-0.27	32	5.36	+0.66	114
Great Falls	77	30	50	15	+15	0.11	-0.17	0.14	-0.26	35	6.35	+1.52	131
Harlowton	72	25	47	4	+4	0.00	-0.28	0.00	-0.37	0	2.29	-1.46	61
Helena	78	35	52	22	+22	0.04	-0.14	0.06	-0.18	25	2.40	-0.99	71
Holter Dam	73	27	51	13	+13	0.03	-0.18	0.04	-0.26	13	4.29	+1.26	142
Judith Gap	71	30	47	3	+3	0.00	-0.28	0.08	-0.32	20	5.02	+0.76	118
Lewistown	75	32	50	19	+19	0.27	-0.01	0.32	-0.08	80	4.35	-1.34	76
Melstone	72	31	51	13	+13	0.22	-0.06	0.22	-0.18	55	4.48	-0.10	98
Millegan	74	26	46	1	+1	0.35	+0.00	0.35	-0.15	70	7.82	+1.45	123
Neihart	72	29	46	6	+6	0.70	+0.35	0.70	+0.20	140	7.24	+0.32	105
Roundup	73	29	50	12	+12	0.18	-0.06	0.25	-0.08	76	5.75	+2.13	159
Ryegate	74	32	52	17	+17	0.17	-0.04	0.17	-0.11	61	4.95	+1.52	144
Stanford	72	30	48	12	+12	0.17	-0.12	0.17	-0.24	41	3.98	-0.91	81
Townsend	75	28	50	14	+14	0.34	+0.20	0.34	+0.14	170	3.00	+0.31	112
Valentine	72	25	47	5	+5	0.05	-0.16	0.08	-0.19	30	4.07	+0.38	110
White Sulphur Springs	75	30	51	12	+12	0.12	-0.09	0.12	-0.18	40	4.39	+0.47	112
SOUTHWEST													
Boulder	74	26	49	9	+9	0.23	+0.09	0.23	+0.03	115	2.34	-0.70	77
Bozeman	71	25	49	10	+10	0.27	-0.15	0.27	-0.33	45	8.34	+1.24	117
Butte	73	24	44	0	+0	0.05	-0.16	0.05	-0.25	17	3.71	-0.37	91
Dillon	73	28	49	10	+10	0.23	+0.04	0.28	+0.03	112	2.95	+0.46	118
Divide	75	27	48	4	+4	0.12	-0.09	0.12	-0.18	40	5.58	+1.80	148
Ennis	77	23	47	5	+5	0.18	-0.10	0.20	-0.19	51	4.26	-0.05	99
Logan	76	26	48	6	+6	0.05	-0.23	0.05	-0.35	13	4.21	-0.88	83
Twin Bridges	73	28	48	5	+5	0.14	+0.00	0.14	-0.06	70	3.98	+1.68	173
West Yellowstone	69	26	44	0	+0	0.25	-0.10	0.25	-0.25	50	10.64	-1.07	91
Wisdom	70	19	43	0	+0	0.06	-0.15	0.06	-0.23	21	5.00	+0.64	115
SOUTH CENTRAL													
Big Timber	75	28	51	18	+18	0.00	-0.35	0.00	-0.49	0	6.32	+0.93	117
Billings	78	36	55	39	+39	0.00	-0.35	0.10	-0.40	20	4.97	-0.77	87
Busby	75	26	50	5	+5	0.13	-0.15	0.15	-0.25	38	4.69	-0.75	86
Gardiner	74	26	47	2	+2	0.15	+0.08	0.15	+0.03	125	2.82	-0.49	85
Hardin	77	27	52	16	+14	0.18	-0.10	0.28	-0.10	74	5.21	+0.81	118
Huntley	80	28	52	26	+26	0.00	-0.33	0.03	-0.42	7	4.80	-0.06	99
Hysham	75	34	53	25	+25	0.21	-0.03	0.21	-0.12	64	4.28	+0.01	100
Joliet	78	27	48	8	+8	0.00	-0.40	0.04	-0.51	7	4.36	-1.77	71
Livingston	76	29	51	19	+19	0.09	-0.20	0.13	-0.28	32	5.06	+0.14	103
Melville	69	26	46	5	+5	0.07	-0.34	0.07	-0.49	12	6.33	+0.97	118
Pompey's Pillar	74	27	49	10	+10	0.12	-0.21	0.22	-0.23	49	4.29	-0.60	88
Rapelje	74	27	50	7	+7	0.00	-0.33	0.00	-0.45	0	4.46	-0.71	86
Red Lodge	72	26	49	7	+7	0.00	-0.63	0.13	-0.74	15	7.69	-2.45	

Montana Data Collection Office
Surface Water Supply Index (SWSI)
April 1, 2016



Montana SNOTEL Current Snow Water Equivalent (SWE) % of Normal

Apr 11, 2016



Provisional Data
Subject to Revision

The snow water equivalent percent of normal represents the current snow water equivalent found at selected SNOTEL sites in or near the basin compared to the average value for those sites on this day. Data based on the first reading of the day (typically 00:00).

Prepared by:
USDA/NRCS National Water and Climate Center
Portland, Oregon
<http://www.wcc.nrcs.usda.gov>