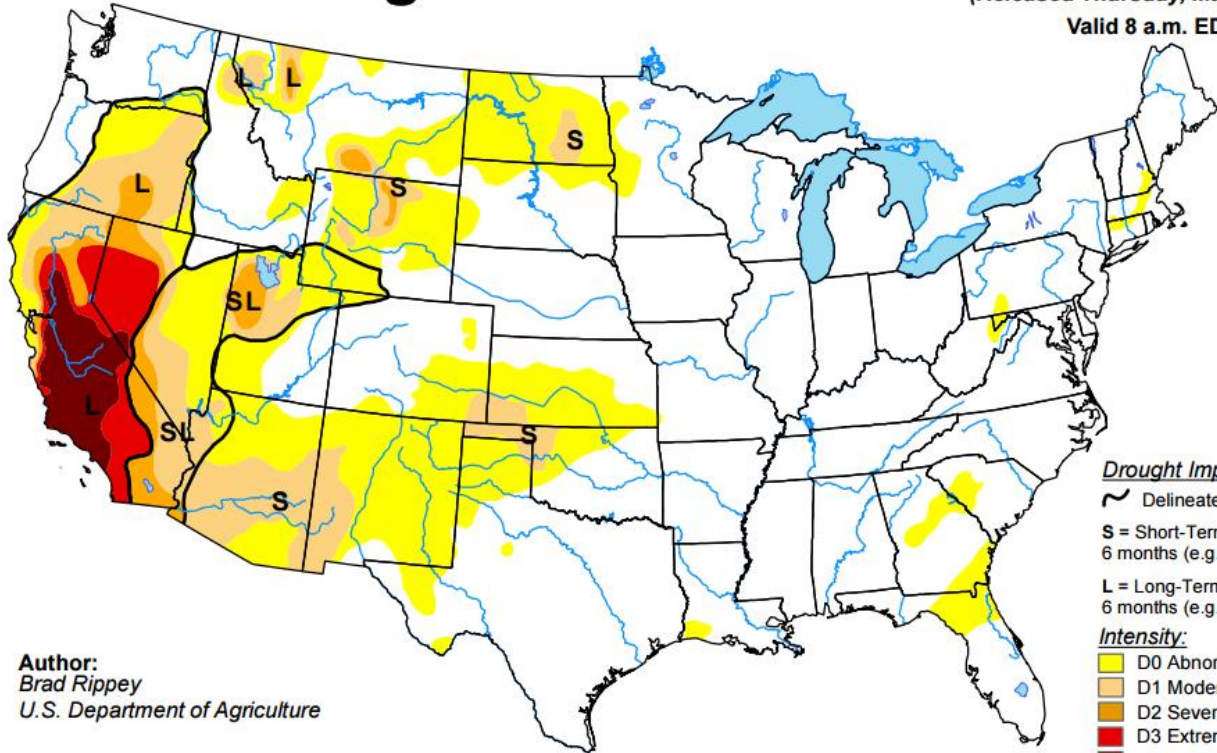


Weather Information for the Month Ending 03/27/2016

Station ID	Temperature				Precipitation March			Precipitation October 1 to date		
	High	Low	Avg	DFN	Total	DFN	% Nrm	Total	DFN	% Nrm
NORTHWEST										
Alberton	64	21	40	+3	1.74	+0.90	207	9.57	+3.93	170
Corvallis	66	18	40	+2	0.74	+0.17	130	4.47	+0.31	107
Creston	57	19	39	+5	1.26	+0.14	113	8.01	-0.04	100
Deer Lodge	66	5	36	+2	0.45	+0.02	105	2.72	+0.32	113
Hamilton	68	18	40	+3	0.88	+0.09	111	7.13	+1.31	123
Heron	60	23	40	+5	4.61	+2.25	195	24.63	+3.27	115
Kalispell	58	17	38	+4	1.16	+0.18	118	7.51	-0.19	98
Libby	59	12	36	+5	3.42	+1.80	211	17.35	+2.79	119
Missoula	66	19	40	+4	0.83	-0.01	99	3.72	-1.92	66
Olney	55	10	34	+4	1.01	-0.15	87	9.43	-2.25	81
Polson	61	19	39	+2	2.23	+1.34	251	11.16	+4.85	177
Saint Ignatius	65	17	41	+3	1.16	+0.15	115	5.78	-0.30	95
Seeley Lake	60	7	36	+4	0.86	-0.30	74	8.20	-3.24	72
Superior	67	21	41	+2	2.21	+1.11	201	15.21	+7.02	186
Thompson Falls	61	24	41	+0	3.33	+1.77	213	12.50	-0.83	94
Yaak	59	12	36	+2	2.03	-0.36	85	14.74	-7.67	66
NORTH CENTRAL										
Brady	69	15	39	+8	0.09	-0.54	14	2.46	-0.52	83
Bynum	68	15	38	+7	0.15	-0.42	26	2.40	-0.80	75
Chester	69	9	39	+8	0.37	-0.05	88	3.20	+0.90	139
Chinook	71	4	38	+9	0.11	-0.38	22	2.42	-0.58	81
Choteau	69	8	40	+6	0.13	-0.14	48	1.65	-0.06	96
Cut Bank	67	11	38	+8	0.07	-0.41	15	1.22	-1.16	51
Dunkirk	70	7	37	+6	0.14	-0.45	24	1.47	-1.56	49
Fort Assiniboine	71	8	39	+7	0.27	-0.28	49	3.50	+0.36	111
Fort Benton	73	8	40	+4	0.52	-0.22	70	3.56	+0.00	100
Fort Belknap	71	5	38	+6	0.08	-0.23	26	3.05	+0.65	127
Goldbutte	67	4	37	+6	0.66	+0.07	12	4.50	+1.47	149
Havre	71	8	40	+9	0.27	-0.35	44	3.10	+0.05	102
Heart Butte	66	14	38	+9	0.77	-1.08	42	5.19	10.11	34
Loma	73	8	40	+6	0.76	+0.11	17	4.27	+0.88	126
Port of Morgan	66	9	39	+9	0.52	+0.28	17	3.53	+1.85	210
Malta	71	10	42	13	0.06	-0.46	12	3.19	+0.30	110
Rudyard	69	6	38	+6	0.22	-0.15	59	1.88	+0.09	105
Saco	70	8	37	+9	0.14	-0.37	27	3.32	+0.49	117
Shelby	71	11	38	+6	0.10	-0.46	18	2.67	-0.18	94
Turner	69	6	40	11	0.14	-0.21	40	2.66	+0.44	120
Zortman	69	6	37	+5	0.43	-0.27	61	5.07	+1.87	158
NORTHEAST										
Bredette	66	11	37	+9	0.16	-0.26	38	2.89	+0.54	123
Brockway	71	12	39	+7	0.03	-0.32	9	2.36	+0.27	113
Circle	72	9	40	+9	0.02	-0.52	4	2.68	-0.45	86
Culbertson	70	11	39	+8	0.09	-0.33	21	2.19	-0.43	84
Glasgow	68	12	39	10	0.47	+0.07	18	4.04	+1.55	162
Glendive	72	14	42	10	0.08	-0.39	17	1.84	-1.27	59
Jordan	73	12	40	+8	0.27	-0.27	50	5.20	+1.95	160
Nashua	68	14	41	+8	0.30	-0.03	91	2.99	+0.77	135
Plentywood	68	9	34	+6	0.15	-0.39	28	3.31	+0.61	123
Saint Marie	64	7	38	+8	0.30	-0.10	75	3.11	+0.62	125
Savage	71	12	40	+8	0.11	-0.34	24	1.71	-1.29	57
Scobey	64	13	38	12	0.18	-0.29	38	2.68	+0.48	122
Sidney	71	12	39	+8	0.16	-0.33	33	2.17	-1.24	64
Wolf Point	74	15	39	+9	0.34	-0.09	79	2.81	+0.23	109
CENTRAL										
Denton	69	8	39	+9	0.43	-0.16	73	4.60	+1.25	137
Grass Range	70	6	42	+8	0.56	-0.29	66	4.65	+0.51	112
Great Falls	68	10	40	+8	0.41	-0.46	47	6.15	+1.88	144
Harlowton	64	6	36	+2	0.05	-0.57	8	1.91	-1.35	59
Helena	66	15	40	+6	0.10	-0.44	19	2.27	-0.79	74
Holter Dam	66	12	42	+5	0.44	+0.01	02	3.66	+1.03	139
Judith Gap	65	7	36	+7	0.46	-0.29	61	4.33	+0.62	117
Lewistown	71	11	40	+9	0.51	-0.50	50	3.78	-1.35	74
Melstone	70	13	42	+7	0.37	-0.36	51	3.82	-0.20	95
Millegan	67	6	35	+5	0.55	-0.63	47	6.95	+1.28	123
Neihart	62	8	37	+4	0.55	-0.63	47	5.78	-0.44	93
Roundup	70	8	39	+3	0.43	-0.11	80	4.89	+1.72	154
Ryegate	69	11	41	+7	0.38	-0.10	79	4.20	+1.13	137
Stanford	68	12	39	+5	0.38	-0.46	45	3.45	-0.87	80
Townsend	69	14	40	+4	0.31	-0.16	66	2.62	+0.21	109
Valentine	72	5	39	+8	0.20	-0.42	32	3.87	+0.54	116
White Sulphur Springs	66	11	40	+9	0.41	-0.32	56	3.96	+0.46	113
SOUTHWEST										
Boulder	63	10	37	+4	0.03	-0.42	7	2.09	-0.67	94
Bozeman	67	12	40	+6	1.41	+0.20	117	7.39	+1.11	117
Butte	59	0	34	+4	0.45	-0.27	62	3.66	+0.00	109
Dillon	62	15	37	+4	0.38	-0.08	83	2.59	+0.43	130
Divide	62	11	36	+7	0.85	+0.19	129	5.30	+1.94	165
Ennis	64	9	37	+3	0.88	+0.12	116	3.79	+0.00	95
Logan	67	10	38	+6	0.34	-0.54	39	4.07	-0.46	105
Twin Bridges	61	12	37	+4	0.72	+0.31	176	3.87	+1.85	209
West Yellowstone	54	-17	27	+3	1.44	-0.17	89	9.91	-1.10	90
Wisdom	56	-3	31	+6	0.93	+0.37	166	4.94	+0.98	118
SOUTH CENTRAL										
Big Timber	69	7	40	+6	0.95	+0.16	120	6.03	+1.29	127
Billings	71	12	44	+8	0.47	-0.48	49	3.89	-0.65	77
Busby	72	6	40	+7	0.21	-0.49	30	3.94	-0.63	81
Gardiner	60	7	37	+2	0.53	-0.02	96	2.85	-0.22	92
Hardin	74	6	43	+6	0.73	+0.16	128	4.20	+0.13	108
Huntley	74	5	41	+6	0.53	-0.24	69	4.00	+0.01	94
Hysham	76	9	43	+8	0.48	-0.23	68	3.60	-0.04	94
Joliet	72	7	38	+3	0.33	-0.76	30	3.75	-0.84	70
Livingston	68	9	40	+5	0.66	-0.05	93	4.53	+0.24	104
Melville	63	4	35	+6	0.77	-0.24	76	5.94	+1.58	129
Pompey's Pillar	72	4	38	+3	0.21	-0.49	30	3.42	-0.35	80
Rapelje	70	4	40	+6	0.37	-0.51	42	4.18	+0.15	92
Red Lodge	61	10	38	+7	0.89	-1.08	45	5.54	-2.29	62
Wilsall	60	7	33	+2	1.36	+0.07	105	7.36	+0.95	115
Yellowtail	75	8	41	+2	0.64	-0.56	53	3.92	-2.11	60
SOUTHEAST										
Baker	75	11	39	+8	0.10	-0.56	15	2.03	-1.90	52
Biddle	72	13	42	+9	0.51	-0.20	72	3.53	-0.43	89
Brandenberg	75	13	42	+6	0.26	-0.40	39	2.91	-1.56	65
Broadus	72	15	41	+6	0.67	-0.06	92	2.79	-1.19	70
Colstrip	71	9	40	+5	0.60	-0.16	79	4.75	+0.48	11
Ekalaka	72	11	40	+8	0.38	-0.29	57	3.40	-1.34	72
Forsyth	76	11	42	+6	0.39	-0.30	57	2.93	-1.08	73
Miles City	74	17	42	+9	0.25	-0.23	52	2.31	-1.12	67
Mizpah	75	8	40	+6	0.15	-0.33	31	2.76	-0.50	85
Plevna	73	8	39	+8	0.04	-0.62	6	2.49	-1.44	63
Ridgeway	75	12	41	11	0.34	-0.26	57	3.14	-0.52	86
Terry	76	10	40	+8	0.16	-0.18	47	2.21	-0.31	88
Wibaux	73	8	38	+9	0.29	-0.20	59	2.25	-0.76	75

U.S. Drought Monitor

March 22, 2016
 (Released Thursday, Mar. 24, 2016)
 Valid 8 a.m. EDT



Drought Impact Types:
 ~ Delineates dominant impacts
 S = Short-Term, typically less than 6 months (e.g. agriculture, grasslands)
 L = Long-Term, typically greater than 6 months (e.g. hydrology, ecology)

Intensity:
 Yellow: D0 Abnormally Dry
 Light Orange: D1 Moderate Drought
 Orange: D2 Severe Drought
 Red-Orange: D3 Extreme Drought
 Dark Red: D4 Exceptional Drought

The Drought Monitor focuses on broad-scale conditions. Local conditions may vary. See accompanying text summary for forecast statements.

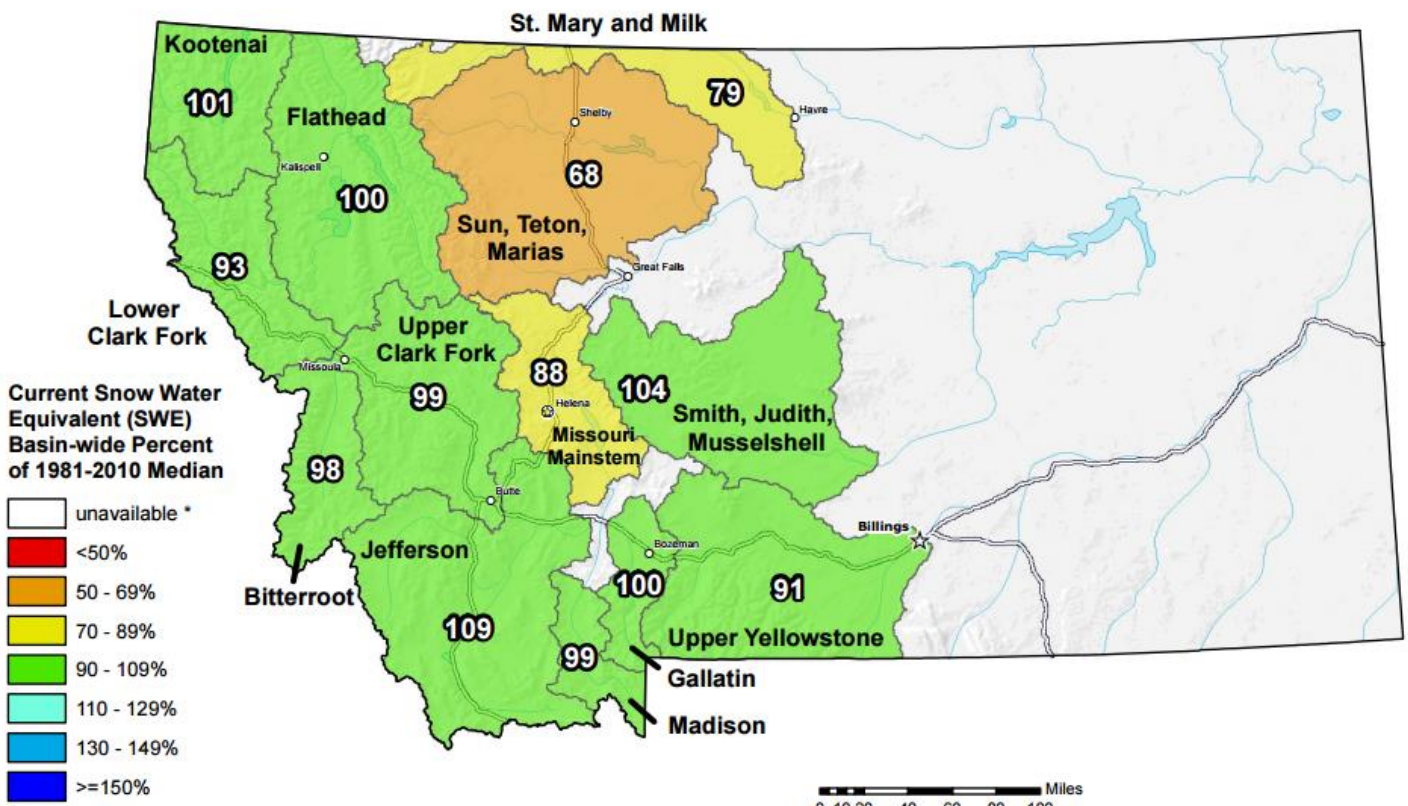
Author:
 Brad Rippey
 U.S. Department of Agriculture



<http://droughtmonitor.unl.edu/>

Montana SNOTEL Current Snow Water Equivalent (SWE) % of Normal

Mar 28, 2016



* Data unavailable at time of posting or measurement is not representative at this time of year

Provisional Data
 Subject to Revision



The snow water equivalent percent of normal represents the current snow water equivalent found at selected SNOTEL sites in or near the basin compared to the average value for those sites on this day. Data based on the first reading of the day (typically 00:00).

Prepared by:
 USDA/NRCS National Water and Climate Center
 Portland, Oregon
<http://www.wcc.nrcs.usda.gov>