

Weather Information for the Month Ending 02/28/2016

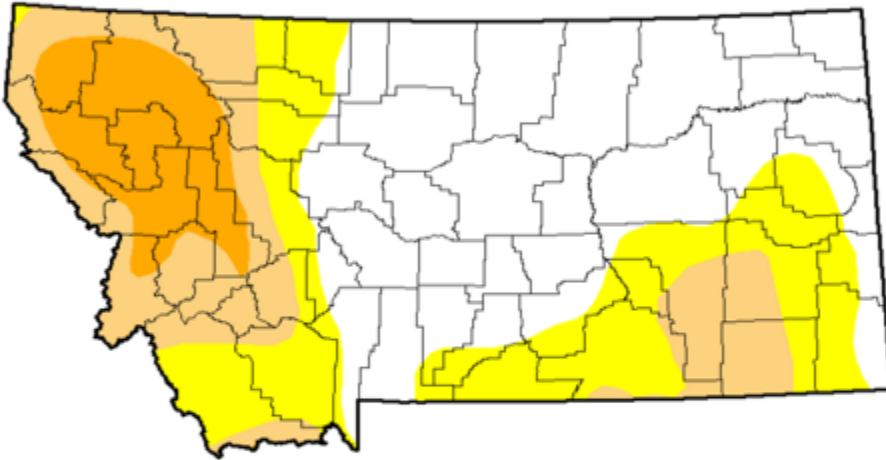
Station ID	Temperature				Precipitation February			Precipitation October 1 to date		
	High	Low	Avg	DFN	Total	DFN	% Nrm	Total	DFN	% Nrm
NORTHWEST										
Alberton	58	14	36	+7	0.94	+0.17	122	7.75,	+2.98	162
Corvallis	61	14	38	+7	0.27	-0.27	50	3.73,	+0.16	104
Creston	55	1	35	+9	1.22	+0.03	103	7.00,	+0.11	102
Deer Lodge	60	-3	32	+5	0.24	-0.04	86	2.27,	+0.31	116
Hamilton	62	15	37	+7	0.45	-0.41	52	6.20,	+1.20	124
Heron	55	14	36	+6	3.53	+0.15	104	19.94,	+1.04	106
Kalispell	54	-2	34	+8	0.86	-0.29	75	6.35,	-0.33	95
Libby	55	1	32	+7	0.87	-1.38	39	12.67,	-0.20	98
Missoula	55	15	35	+7	0.54	-0.23	70	2.89,	-1.88	61
Olney	50	-5	30	+7	1.59	-0.42	79	8.42,	-2.04	80
Polson	56	7	35	+5	1.28	+0.40	145	8.86,	+3.47	164
Saint Ignatius	57	14	38	+8	0.56	-0.21	73	4.61,	-0.43	91
Seeley Lake	55	4	34	10	0.72	-0.93	44	7.27,	-2.96	71
Superior	55	20	37	+5	1.70	+0.56	149	12.86,	+5.81	182
Thompson Falls	60	16	38	+5	1.83	-0.21	90	9.13,	-2.57	78
Yaak	53	0	32	+3	1.54	-1.62	49	12.71,	-7.21	64
NORTH CENTRAL										
Brady	65	12	36	+12	0.02	-0.33	6	2.37	+0.04	102
Bynum	69	15	37	+12	0.03	-0.42	7	2.25	-0.36	86
Chester	67	13	36	+14	0.04	-0.22	15	2.70	+0.83	144
Chinook	65	12	33	+14	0.01	-0.31	3	2.31	-0.19	92
Choteau	73	11	38	+11	0.02	-0.17	11	1.52	+0.09	106
Cut Bank	65	11	37	+14	0.04	-0.24	14	1.15	-0.74	61
Dunkirk	69	3	34	+10	0.06	-0.27	18	1.33	-1.09	55
Fort Assiniboine	66	14	35	+14	0.02	-0.31	6	3.23	+0.66	126
Fort Benton	70	12	38	+10	0.06	-0.33	15	3.04	+0.24	109
Fort Belknap	65	11	33	+12	0.21	-0.11	66	2.97	+0.89	143
Goldbutte	67	3	36	+13	0.05	-0.28	15	3.74	+1.32	155
Havre	67	12	36	+15	0.05	-0.31	14	2.83	+0.42	117
Heart Butte	60	11	36	+13	0.39	-1.75	18	4.42	-8.96	33
Loma	69	8	36	+12	0.23	-0.15	61	3.58	+0.86	132
Port of Morgan	59	12	31	+13	0.39	+0.22	229	2.95	+1.51	205
Malta	62	12	35	+17	0.07	-0.22	24	3.11	+0.75	132
Rudyard	68	12	35	+13	0.12	-0.06	67	1.66	+0.25	118
Saco	62	8	31	+13	0.06	-0.26	19	3.18	+0.87	138
Shelby	68	9	36	+12	0.11	-0.22	33	2.57	+0.30	113
Turner	60	11	33	+15	0.15	-0.03	83	2.51	+0.65	135
Zortman	59	12	34	+9	0.60	+0.29	194	4.62	+2.14	186
NORTHEAST										
Bredette	58	2	28	+10	0.48	+0.26	218	2.69	+0.77	140
Brockway	64	9	34	+11	0.17	-0.01	94	2.33	+0.60	135
Circle	64	8	33	+11	0.35	-0.01	97	2.66	+0.08	103
Culbertson	59	6	31	+12	0.70	+0.47	304	2.09	-0.10	95
Glasgow	61	8	32	+14	0.30	+0.04	115	3.57	+1.49	172
Glendive	64	0	36	+15	0.42	+0.09	127	1.65	-0.98	63
Jordan	64	3	35	+14	0.80	+0.44	222	4.93	+2.23	183
Nashua	60	7	33	+11	0.37	+0.18	195	2.69	+0.81	143
Plentywood	58	3	27	+10	0.46	+0.15	148	3.16	+1.01	147
Saint Marie	55	0	30	+11	0.10	-0.16	38	2.81	+0.73	135
Savage	63	8	32	+11	0.31	+0.02	107	1.66	-0.88	65
Scobey	56	8	31	+15	0.31	+0.17	221	2.69	+0.97	156
Sidney	61	9	33	+12	0.27	-0.09	75	1.76	-1.15	60
Wolf Point	63	6	33	+14	0.46	+0.21	184	2.47	+0.33	115
CENTRAL										
Denton	66	12	36	+13,	0.26	-0.08	76	4.17	+1.43	152
Grass Range	65	7	37	+10,	0.28	-0.03	90	4.09	+0.82	125
Great Falls	65	11	39	+13,	0.03	-0.48	6	5.74	+2.36	170
Harlowton	63	4	35	+8,	0.21	-0.18	54	1.92	-0.70	73
Helena	61	9	37	+12,	0.13	-0.25	34	2.14	-0.36	86
Holter Dam	59	13	41	+10,	0.12	-0.15	44	3.22	+1.03	147
Judith Gap	65	2	34	+10,	0.45	+0.02	105	3.87	+0.93	132
Lewistown	65	7	36	+11,	0.70	+0.13	123	3.25	-0.84	79
Melstone	63	13	37	+10,	0.50	+0.08	119	3.72	+0.45	114
Millegan	57	1	33	+9,	0.22	-0.29	43	6.39	+1.93	143
Neihart	58	4	34	+7,	0.22	-0.44	33	5.23	+0.22	104
Roundup	65	13	36	+7,	0.47	+0.11	131	4.46	+1.84	170
Ryegate	63	7	39	+12,	0.31	-0.01	97	3.82	+1.24	148
Stanford	65	9	37	+9,	0.27	-0.21	56	3.07	-0.39	89
Townsend	62	7	36	+8,	0.05	-0.18	22	2.31	+0.38	120
Valentine	67	12	35	+13,	0.14	-0.18	44	3.67	+0.98	136
White Sulphur Springs	62	8	37	+12,	0.17	-0.21	45	3.55	+0.80	129
SOUTHWEST										
Boulder	56	-4	33	+7	0.18	-0.12	60	2.17	-0.13	94
Bozeman	60	8	35	+7	0.29	-0.41	41	5.88	+0.84	117
Butte	51	-12	28	+6	0.09	-0.38	19	3.17	+0.25	109
Dillon	56	-1	33	+6	0.01	-0.19	5	2.19	+0.50	130
Divide	55	0	30	+9	0.18	-0.24	43	4.41	+1.73	165
Ennis	58	1	35	+8	0.13	-0.32	29	2.86	-0.15	95
Logan	60	2	32	+8	0.10	-0.44	19	3.82	+0.19	105
Twin Bridges	54	-2	32	+5	0.22	+0.04	122	3.35	+1.75	209
West Yellowstone	49	-25	22	+6	0.65	-1.12	37	8.39	-0.95	90
Wisdom	46	-18	24	+7	0.25	-0.26	49	3.98	+0.60	118
SOUTH CENTRAL										
Big Timber	63	8	40	+11	0.14	-0.36	28	5.22	+1.29	133
Billings	68	19	41	+12	0.09	-0.49	16	3.42	-0.65	84
Busby	67	7	36	+12	0.96	+0.42	178	3.54	-0.63	85
Gardiner	56	0	33	+6	0.25	-0.08	76	2.32	-0.22	91
Hardin	68	12	39	+11	0.63	+0.28	180	3.45	+0.13	104
Huntley	70	13	39	+12	0.11	-0.37	23	3.47	+0.01	100
Hysham	68	13	39	+13	0.41	+0.07	121	3.05	-0.04	99
Joliet	66	5	35	+8	0.04	-0.59	6	3.42	-0.84	80
Livingston	63	9	40	+11	0.16	-0.32	33	3.86	+0.24	107
Melville	58	4	33	+8	0.18	-0.32	36	5.15	+1.58	144
Pompey's Pillar	65	12	36	+10	0.60	+0.14	130	3.21	-0.35	90
Rapelje	67	7	38	+10	0.11	-0.43	20	3.81	+0.15	104
Red Lodge	59	5	35	+9	0.11	-0.95	10	4.63	-2.29	67
Wilsall	59	4	31	+5	0.23	-0.52	31	6.00	+0.95	119
Yellowtail	69	19	40	+7	0.67	-0.05	93	3.18	-2.11	60
SOUTHEAST										
Baker	68	4	34	+12	0.56	+0.12	127	1.93	-1.32	59
Biddle	68	12	37	+12	0.76	+0.35	185	2.80	-0.43	87
Brandenberg	71	8	36	+9	0.66	+0.18	138	2.54	-1.25	67
Broadus	66	11	36	+9	0.73	+0.32	178	2.08	-1.15	64
Colstrip	66	10	37	+10	1.15	+0.72	267	4.04	+0.55	116
Ekalaka	65	6	34	+10	0.38	-0.13	75	2.92	-1.13	72
Forsyth	67	12	38	+11	0.27	-0.12	69	2.45	-0.85	74
Miles City	69	15	38	+14	0.41	+0.07	121	2.04	-0.90	69
Mizpah	69	5	35	+12	0.59	+0.30	203	2.44	-0.33	88
Plevna	67	1	33	+10	0.37	-0.07	84	2.34	-0.91	72
Ridgeway	65	7	34	+12	0.24	-0.11	69	2.68	-0.37	88
Terry	65	9	35	+13	0.06	-0.18	25	2.05	-0.12	94
Wibaux	64	6	32	+12	0.42	+0.13	145	1.94	-0.57	77

U.S. Drought Monitor

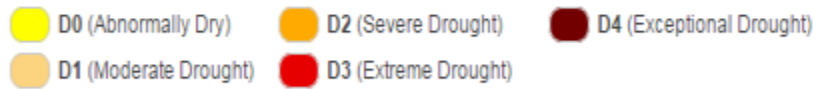
Montana

February 23, 2016

(Released Thursday February 25, 2016)



Intensity:



Author(s):

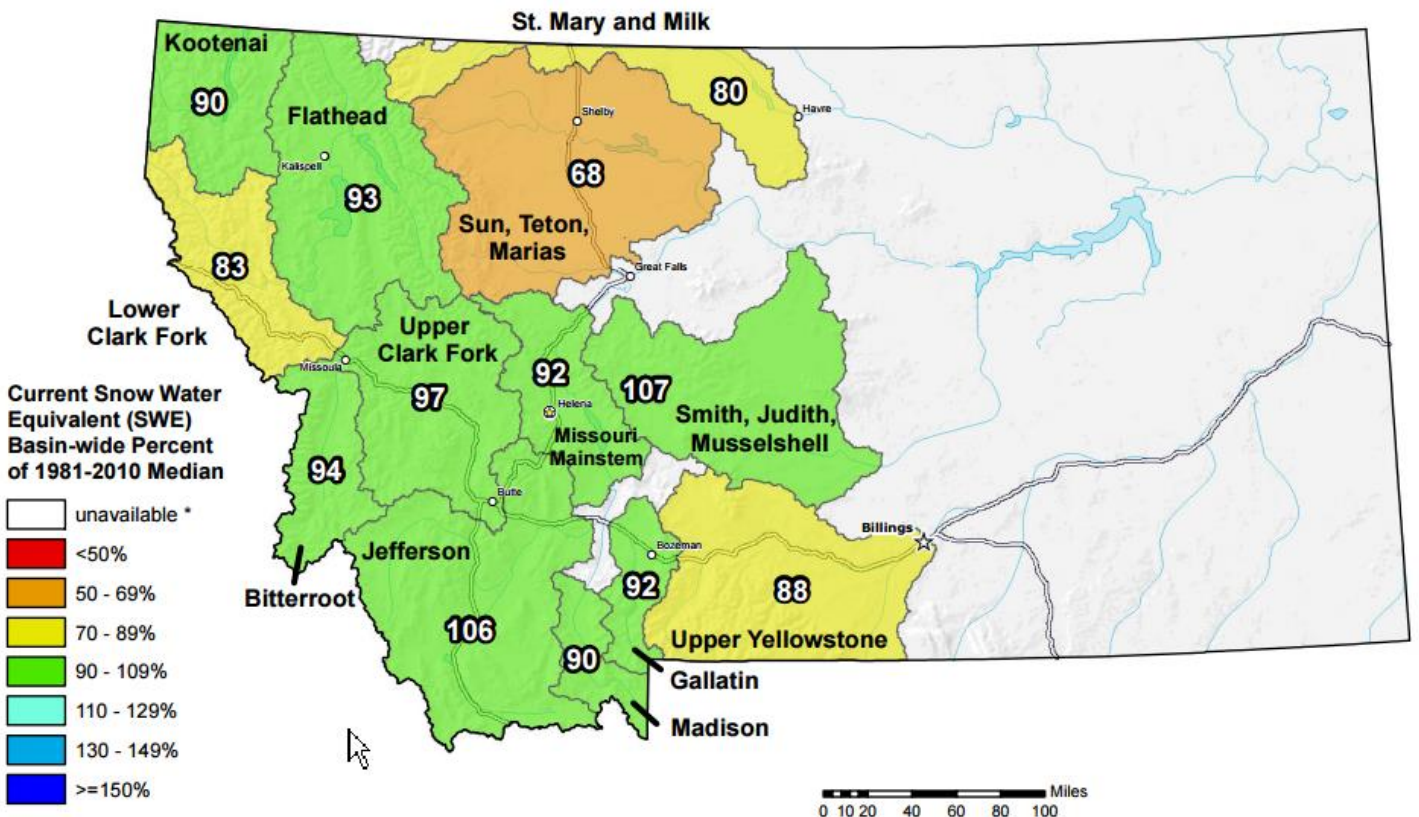
Eric Luebehusen, U.S. Department of Agriculture



<http://droughtmonitor.unl.edu/>

Montana SNOTEL Current Snow Water Equivalent (SWE) % of Normal

Feb 29, 2016



* Data unavailable at time of posting or measurement is not representative at this time of year

Provisional Data
Subject to Revision



The snow water equivalent percent of normal represents the current snow water equivalent found at selected SNOTEL sites in or near the basin compared to the average value for those sites on this day. Data based on the first reading of the day (typically 00:00).

Prepared by:
USDA/NRCS National Water and Climate Center
Portland, Oregon
<http://www.wcc.nrcs.usda.gov>