

PRICES RECEIVED BY FARMERS IN KENTUCKY BY MONTHS, 1998 – 2007

Year	Nov	Dec	Jan <u>1/</u>	Feb <u>1/</u>	Mar <u>1/</u>	Apr <u>1/</u>	May	Jun	Jul	Aug	Sep	Oct	Marketing Year Avg
BURLEY TOBACCO - TYPE 31 (DOLLARS PER POUND)													
1998	1.910	1.910	1.900	1.850	1.625	-	-	-	-	-	-	-	1.903
1999	1.895	1.910	1.905	1.875	1.770	-	-	-	-	-	-	-	1.900
2000 <u>2/</u>	1.975	1.985	1.955	1.930	-	-	-	-	-	-	-	-	1.968
2001	1.980	1.985	1.975	1.960	-	-	-	-	-	-	-	-	1.977
2002	1.980	1.985	1.985	1.940	1.760	-	-	-	-	-	-	-	1.980
2003	1.990	1.985	1.980	1.955	-	-	-	-	-	-	-	-	1.982
2004	2.000	2.000	2.000	1.990	2.000	-	-	-	-	-	-	-	2.000
2005	-	-	-	-	-	-	-	-	-	-	-	-	1.560
2006	-	-	-	-	-	-	-	-	-	-	-	-	1.650
2007	-	-	-	-	-	-	-	-	-	-	-	-	1.600

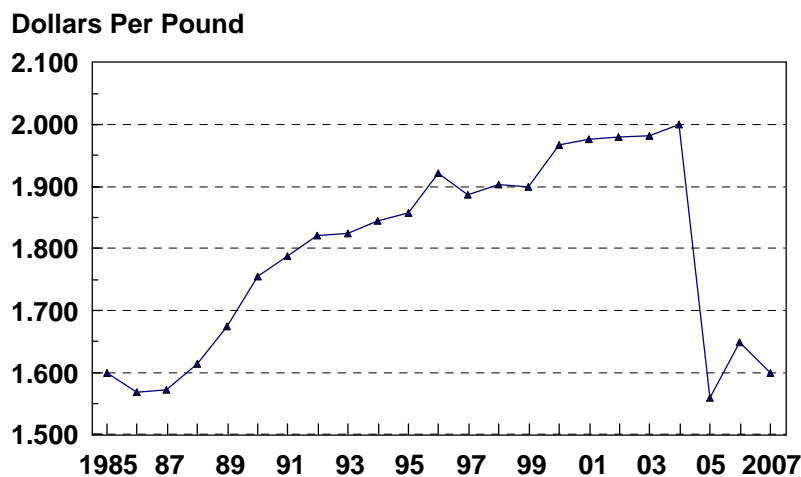
1/Following year. 2/Beginning in 2000 includes contract sales.

PRICES RECEIVED BY FARMERS IN KENTUCKY BY YEAR, 1998 – 2007 1/

Crop Year	Eastern Dark Fire-Cured (Type 22)	Western Dark Fire-Cured (Type 23)	Dark Fire-Cured <u>2/</u>	One Sucker Air-Cured (Type 35)	Green River Air-Cured (Type 36)	Dark Air-Cured <u>2/</u>
DARK TOBACCO (DOLLARS PER POUND)						
1998	2.259	2.159		1.952	1.974	
1999	2.312	2.260		2.066	1.982	
2000	2.201	2.082		1.965	1.940	
2001	2.195	2.101		1.835	1.822	
2002	2.398	2.362		2.135	2.061	
2003	2.480	2.450		2.223	2.086	
2004			2.533			2.205
2005			2.350			2.130
2006			2.400			2.200
2007			2.400			2.200

1/Marketing Year Average. Prices include country sales. 2/Four dark tobacco types were combined into two groups. Type 22 and Type 23 are in dark fire-cured. One Sucker Type 35 and Green River Type 36 are in dark air-cured.

1985 - 2007 BURLEY TOBACCO PRICES MARKETING YEAR AVERAGE

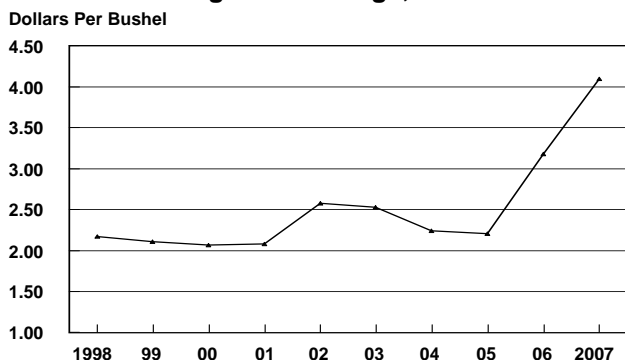


PRICES RECEIVED BY FARMERS IN KENTUCKY BY MONTHS, 1998 - 2008

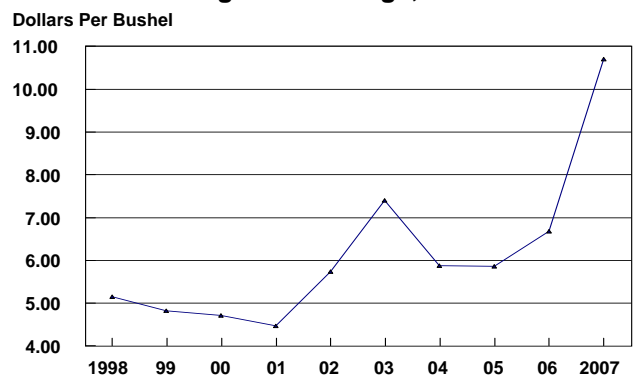
Year	Jan	Feb	Mar	Apr	May	Jun	Jul	Aug	Sep	Oct	Nov	Dec	Marketing Year Avg 1/
CORN (DOLLARS PER BUSHEL)													
1998	2.76	2.74	2.75	2.58	2.51	2.48	2.34	2.02	1.94	2.15	2.29	2.22	2.17
1999	2.31	2.24	2.29	2.27	2.23	2.21	1.94	1.95	1.97	1.95	1.96	2.22	2.11
2000	2.17	2.23	2.26	2.29	2.35	2.19	1.85	1.95	1.85	1.85	2.00	2.23	2.07
2001	2.18	2.28	2.20	2.08	2.08	2.07	2.12	2.13	2.00	1.90	1.94	2.16	2.08
2002	2.15	2.14	2.10	1.99	2.01	2.14	2.32	2.39	2.55	2.46	2.60	2.56	2.58
2003	2.55	2.70	2.58	2.61	2.78	2.72	2.57	2.32	2.24	2.27	2.39	2.45	2.53
2004	2.48	2.74	2.90	3.09	3.06	3.05	2.71	2.40	2.33	2.16	2.11	2.12	2.24
2005	2.37	2.13	2.20	2.19	2.21	2.26	2.35	2.21	2.05	1.89	1.99	2.11	2.21
2006 2/	2.21	2.25	2.33	2.36	2.46	2.46	2.43	2.37	2.34	2.63	3.15	3.26	3.18
2007 2/	3.12	3.80	3.84	3.58	3.70	3.87	3.69	3.35	3.33	3.36	3.74	4.07	4.10
2008	4.01	4.59	4.83	5.06	5.46	5.70							
WINTER WHEAT (DOLLARS PER BUSHEL)													
1998	3.31	2.97	3.13	2.68	2.83	2.50	2.15	2.06	1.97	2.18	2.28	2.10	2.26
1999	2.51	2.38	2.13	2.03	1.98	2.21	2.08	2.16	2.20	2.00	2.21	2.21	2.19
2000	2.50	2.32	2.66	2.15	2.32	2.34	2.10	2.06	2.04	1.96	2.14	2.31	2.26
2001	2.31	2.58	2.69	2.15	2.40	2.35	2.47	2.58	2.45	2.40	2.58	2.76	2.50
2002	2.75	2.83	2.71	2.58	2.48	2.67	2.94	3.09	3.38	3.42	3.38	3.67	3.01
2003	3.49	3.40	3.14	3.06	3.25	3.12	3.08	3.38	3.32	3.07	3.49	3.31	3.17
2004	3.25	3.44	3.90	3.54	3.39	3.15	2.91	2.97	2.55	2.64	2.51	2.89	2.96
2005	3.10	2.93	2.77	3.17	2.69	3.22	3.28	3.07	3.05	3.17	3.43	3.18	3.31
2006 2/	3.53	3.57	C	C	3.56	3.35	3.14	3.43	3.41	4.03	4.12	4.20	3.45
2007 2/	3.90	4.03	4.17	C	4.36	4.93	5.10	5.75	7.03	6.58	7.60	6.35	5.75
2008	5.76	5.15	5.26	7.51	4.82	5.99							
SOYBEANS (DOLLARS PER BUSHEL)													
1998	6.89	6.78	6.57	6.41	6.38	6.30	6.28	5.66	5.27	5.40	5.63	5.52	5.15
1999	5.48	4.91	4.80	4.73	4.63	4.59	4.22	4.68	4.76	4.63	4.55	4.62	4.83
2000	4.85	5.06	5.16	5.29	5.40	5.12	4.66	4.74	4.81	4.62	4.58	4.94	4.71
2001	4.88	4.67	4.56	4.38	4.47	4.66	5.05	5.02	4.57	4.25	4.23	4.35	4.47
2002	4.45	4.46	4.54	4.69	4.78	5.06	5.62	5.54	5.56	5.56	5.72	5.65	5.74
2003	5.77	5.78	5.83	6.00	6.25	6.16	5.98	5.79	6.05	6.80	7.24	7.29	7.40
2004	7.25	8.11	9.04	9.82	8.94	9.12	8.71	6.59	6.01	5.76	5.65	5.61	5.87
2005	5.82	5.65	6.12	6.17	6.49	6.84	6.87	6.32	5.60	5.70	5.74	5.98	5.86
2006 2/	6.11	5.96	5.79	5.65	5.88	5.83	5.79	5.50	5.37	5.85	6.41	6.49	6.68
2007 2/	6.50	7.07	6.98	7.11	7.38	7.71	7.98	8.01	8.51	8.73	9.00	10.30	10.70
2008	9.93	12.10	12.40	12.30	13.10	C							

1/Marketing year average is the weighted monthly price for the marketing year. Marketing year for Corn & Soybeans is September through August and for Winter Wheat is July through June. 2/Revised. C-Confidential.

KENTUCKY CORN PRICES
Marketing Year Average, 1998 - 2007



KENTUCKY SOYBEAN PRICES
Marketing Year Average, 1998 - 2007

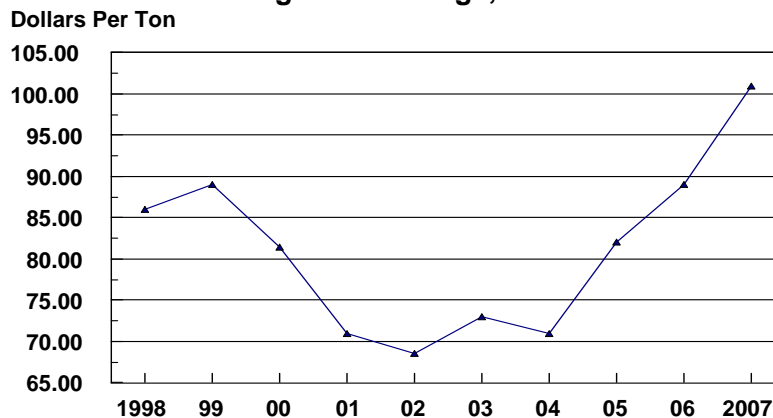


PRICES RECEIVED BY FARMERS IN KENTUCKY BY MONTHS, 1998 - 2008

Year	Jan	Feb	Mar	Apr	May	Jun	Jul	Aug	Sep	Oct	Nov	Dec	Marketing Year Avg ^{1/}
ALFALFA HAY ^{2/} (DOLLARS PER TON)													
1998	103.00	107.00	107.00	110.00	110.00	105.00	111.00	111.00	107.00	111.00	107.00	107.00	112.00
1999	110.00	125.00	123.00	125.00	119.00	118.00	120.00	120.00	120.00	120.00	123.00	120.00	120.00
2000	120.00	123.00	122.00	117.00	114.00	110.00	100.00	100.00	95.00	110.00	110.00	110.00	109.00
2001	110.00	125.00	110.00	110.00	100.00	100.00	95.00	90.00	95.00	95.00	105.00	100.00	99.50
2002	110.00	105.00	105.00	95.00	95.00	95.00	100.00	95.00	105.00	100.00	105.00	110.00	102.00
2003	100.00	105.00	105.00	105.00	110.00	110.00	110.00	115.00	110.00	115.00	115.00	110.00	107.00
2004	100.00	100.00	100.00	100.00	100.00	100.00	100.00	100.00	100.00	100.00	100.00	100.00	103.00
2005	105.00	105.00	110.00	110.00	115.00	115.00	115.00	115.00	120.00	120.00	120.00	120.00	118.00
2006 ^{3/}	120.00	120.00	120.00	120.00	115.00	115.00	115.00	115.00	115.00	115.00	115.00	120.00	120.00
2007 ^{3/}	125.00	135.00	140.00	140.00	135.00	135.00	140.00	145.00	145.00	150.00	155.00	150.00	147.00
2008	165.00	170.00	175.00	175.00	175.00	175.00							
ALL OTHER HAY ^{2/} (DOLLARS PER TON)													
1998	67.00	70.00	70.00	72.00	73.00	68.00	72.00	72.00	70.00	72.00	70.00	70.00	73.00
1999	72.00	81.00	80.00	81.00	77.00	77.00	78.00	78.00	78.00	78.00	81.00	78.00	78.00
2000	78.00	80.00	79.00	76.00	74.00	72.00	65.00	65.00	62.00	72.00	72.00	72.00	70.00
2001	72.00	75.00	66.00	64.00	58.00	58.00	55.00	52.00	55.00	55.00	61.00	58.00	58.00
2002	64.00	61.00	61.00	52.00	55.00	55.00	58.00	55.00	61.00	58.00	61.00	64.00	59.00
2003	58.00	61.00	61.00	61.00	64.00	64.00	64.00	67.00	64.00	67.00	67.00	64.00	62.50
2004	58.00	58.00	58.00	58.00	58.00	58.00	58.00	58.00	58.00	58.00	58.00	58.00	59.00
2005	61.00	61.00	64.00	64.00	67.00	67.00	67.00	67.00	70.00	70.00	70.00	70.00	68.50
2006 ^{3/}	70.00	70.00	70.00	70.00	70.00	70.00	70.00	70.00	70.00	70.00	70.00	70.00	72.00
2007 ^{3/}	75.00	80.00	80.00	80.00	75.00	75.00	80.00	85.00	85.00	85.00	90.00	85.00	82.50
2008	90.00	100.00	100.00	100.00	95.00	100.00							
ALL HAY ^{2/} (DOLLARS PER TON)													
1998	76.00	83.00	84.00	88.00	95.00	82.00	86.00	92.00	83.00	75.00	80.00	78.00	86.00
1999	82.00	97.00	96.00	100.00	103.00	89.00	92.00	95.00	88.00	83.00	91.00	88.00	89.00
2000	88.00	90.00	88.00	93.00	92.00	83.00	75.00	81.00	72.00	80.00	80.00	83.00	81.50
2001	82.00	88.00	78.00	87.00	84.00	70.00	68.00	69.00	67.00	64.00	71.00	70.00	71.00
2002	76.00	72.00	73.00	73.00	67.00	62.00	63.00	68.00	73.00	67.00	71.00	74.00	68.50
2003	68.00	70.00	75.00	75.00	78.00	72.00	70.00	82.00	77.00	78.00	78.00	74.00	73.00
2004	68.00	67.00	71.00	72.00	75.00	65.00	65.00	69.00	72.00	70.00	71.00	68.00	71.00
2005	73.00	76.00	87.00	86.00	85.00	75.00	75.00	79.00	86.00	84.00	85.00	81.00	82.00
2006 ^{3/}	84.00	86.00	94.00	93.00	96.00	82.00	85.00	91.00	86.00	83.00	83.00	88.00	89.00
2007 ^{3/}	89.00	98.00	107.00	104.00	98.00	86.00	90.00	113.00	106.00	104.00	110.00	108.00	101.00
2008	111.00	122.00	134.00	131.00	142.00	120.00							

^{1/}Marketing year for Hay is May - April. Marketing year average prices were computed by weighting monthly prices by the estimated percentage of sales made each month. ^{2/}Baled. ^{3/}Revised.

ALL HAY AVERAGE PRICES Marketing Year Average, 1998 – 2007



PRICES RECEIVED BY FARMERS IN KENTUCKY BY MONTHS, 1998 - 2008

Year	Jan	Feb	Mar	Apr	May	Jun	Jul	Aug	Sep	Oct	Nov	Dec	Annual Avg ^{1/}
BEEF COWS ^{2/} (DOLLARS PER CWT.)													
1998	35.00	37.00	37.00	38.00	38.00	37.00	36.00	35.00	33.00	30.00	30.00	30.00	34.80
1999	32.00	34.00	35.00	35.00	37.00	36.00	36.00	35.00	33.00	33.00	34.00	35.00	34.80
2000	34.00	36.00	38.00	40.00	41.00	41.00	40.00	39.00	38.00	37.00	37.00	36.00	37.80
2001	38.00	42.00	42.00	44.00	45.00	47.00	44.00	44.00	42.00	37.00	36.00	36.00	40.70
2002	36.00	40.00	41.00	40.00	41.00	41.00	37.00	36.00	33.00	34.00	32.00	33.00	37.00
2003	32.00	36.00	36.00	38.00	41.00	41.00	43.00	42.00	43.00	42.00	45.00	47.00	43.20
2004	44.00	44.00	44.00	47.00	51.00	52.00	54.00	53.00	52.00	50.00	49.00	48.00	49.70
2005	47.00	50.00	50.00	52.00	55.00	55.00	52.00	50.00	48.00	45.00	44.00	45.00	49.90
2006	44.00	47.00	48.00	48.00	48.00	47.00	46.00	46.00	46.00	45.00	43.00	42.00	46.00
2007	42.00	45.00	44.00	47.00	50.00	46.00	48.00	48.00	46.00	44.00	42.00	42.00	45.30
2008	44.00	50.00	49.00	49.00	51.00	55.00							
STEERS AND HEIFERS ^{3/} (DOLLARS PER CWT.)													
1998	70.00	71.00	72.00	73.00	73.00	70.00	64.00	63.00	60.00	61.00	61.00	61.00	66.60
1999	64.00	67.00	67.00	67.00	67.00	70.00	71.00	71.00	72.00	74.00	74.00	77.00	69.50
2000	80.00	81.00	84.00	85.00	85.00	85.00	86.00	84.00	80.00	80.00	82.00	83.00	82.70
2001	83.00	81.00	84.00	85.00	85.00	88.00	86.00	84.00	82.00	77.00	73.00	76.00	81.60
2002	76.00	77.00	78.00	74.00	74.00	73.00	72.00	72.00	71.00	72.00	72.00	74.00	73.80
2003	74.00	73.00	73.00	76.00	78.00	80.00	83.00	85.00	89.00	88.00	87.00	88.00	81.20
2004	84.00	85.00	89.00	91.00	97.00	103.00	105.00	108.00	103.00	100.00	97.00	95.00	95.10
2005	96.00	97.00	103.00	109.00	112.00	109.00	103.00	104.00	107.00	104.00	103.00	104.00	104.00
2006	104.00	104.00	102.00	100.00	101.00	105.00	106.00	107.00	107.00	98.00	88.00	87.00	101.00
2007	84.00	87.00	93.00	99.00	100.00	96.00	102.00	105.00	102.00	95.00	92.00	93.00	95.20
2008	85.00	94.00	91.00	91.00	96.00	99.00							
BEEF CATTLE ^{4/} (DOLLARS PER CWT.)													
1998	61.60	63.10	63.60	64.60	64.50	62.10	57.30	56.30	53.30	53.60	53.60	53.60	59.00
1999	56.30	59.10	59.30	59.30	59.80	61.80	62.60	62.40	62.60	64.20	64.40	66.90	59.30
2000	69.00	70.20	73.00	74.20	74.40	74.40	75.00	73.20	69.90	69.40	71.20	71.70	71.90
2001	72.20	71.60	73.90	75.20	75.40	78.20	75.90	74.40	72.40	67.40	64.10	66.40	71.70
2002	66.40	68.10	69.10	65.80	66.10	65.30	63.60	63.40	61.90	62.90	62.40	64.20	64.90
2003	63.90	64.10	64.10	66.90	69.10	70.60	73.40	74.70	78.00	77.00	76.90	78.20	72.30
2004	74.40	75.20	78.20	80.40	86.00	90.80	92.80	94.80	90.80	88.00	85.50	83.70	84.30
2005	84.20	85.70	90.30	95.30	98.30	96.00	90.80	91.00	92.80	89.80	88.80	89.80	90.90
2006	89.60	90.30	89.00	87.50	88.30	91.10	91.60	92.40	92.40	85.30	77.20	76.20	87.60
2007	73.90	76.90	81.20	86.50	88.00	84.00	89.00	91.30	88.60	82.80	80.00	80.80	83.20
2008	75.20	83.40	80.90	80.90	85.20	88.40							
CALVES ^{5/} (DOLLARS PER CWT.)													
1998	77.00	80.00	84.00	87.00	83.00	77.00	69.00	70.00	65.00	66.00	66.00	68.00	74.90
1999	75.00	78.00	79.00	79.00	78.00	79.00	79.00	79.00	81.00	81.00	81.00	87.00	80.20
2000	93.00	94.00	100.00	102.00	99.00	97.00	102.00	97.00	92.00	92.00	94.00	94.00	96.10
2001	98.00	99.00	103.00	102.00	99.00	102.00	99.00	96.00	95.00	88.00	84.00	90.00	96.20
2002	92.00	95.00	95.00	89.00	88.00	83.00	80.00	80.00	79.00	80.00	80.00	82.00	84.90
2003	84.00	86.00	86.00	90.00	91.00	91.00	92.00	93.00	98.00	96.00	98.00	99.00	92.00
2004	99.00	101.00	108.00	111.00	115.00	118.00	120.00	123.00	118.00	114.00	112.00	110.00	112.00
2005	113.00	117.00	126.00	132.00	133.00	131.00	120.00	120.00	123.00	118.00	118.00	121.00	123.00
2006	126.00	131.00	128.00	126.00	124.00	126.00	124.00	124.00	125.00	114.00	104.00	102.00	121.00
2007	99.00	105.00	112.00	115.00	114.00	109.00	113.00	115.00	111.00	103.00	102.00	102.00	109.00
2008	98.00	111.00	107.00	104.00	107.00	107.00							

^{1/}Annual average prices were computed by weighting monthly prices by the estimated percentage of sales made each month. ^{2/}Beef cows and cull dairy cows sold for slaughter. ^{3/}500 lbs. and over. ^{4/}"Steers and heifers" and "cows" combined. ^{5/}Under 500 lbs.

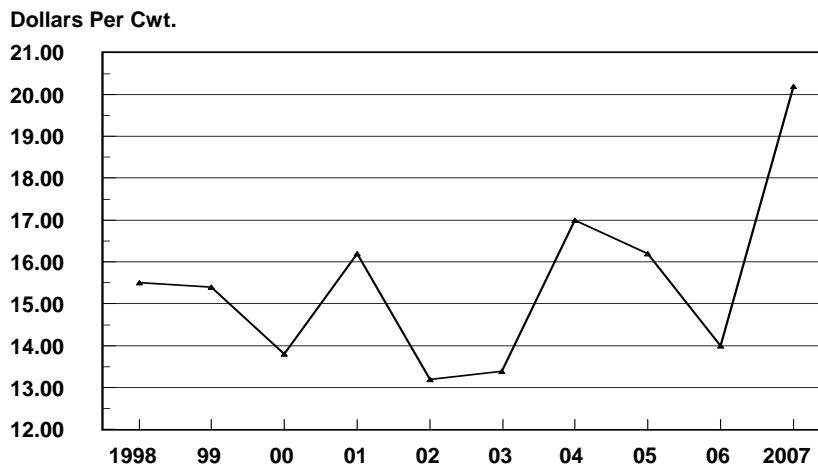
PRICES RECEIVED BY FARMERS IN KENTUCKY BY MONTHS, 1998 - 2008

Year	Jan	Feb	Mar	Apr	May	Jun	Jul	Aug	Sep	Oct	Nov	Dec	Annual Avg 1/
MILK COWS (DOLLARS PER HEAD)													
1998	1,000	-	-	1,000	-	-	1,040	-	-	1,090	-	-	1,030
1999	1,140	-	-	1,170	-	-	1,180	-	-	1,290	-	-	1,200
2000	1,240	-	-	1,250	-	-	1,310	-	-	1,310	-	-	1,280
2001	1,320	-	-	1,340	-	-	1,540	-	-	1,650	-	-	1,460
2002	1,540	-	-	1,650	-	-	1,580	-	-	1,450	-	-	1,550
2003	1,350	-	-	1,330	-	-	1,310	-	-	1,360	-	-	1,340
2004	1,310	-	-	1,550	-	-	1,640	-	-	1,640	-	-	1,540
2005	1,550	-	-	1,690	-	-	1,780	-	-	1,790	-	-	1,700
2006	1,810	-	-	1,830	-	-	1,700	-	-	1,600	-	-	1,740
2007	1,590	-	-	1,640	-	-	1,820	-	-	1,940	-	-	1,750
2008	1,820	-	-	1,910	-	-							

MILK, ALL (DOLLARS PER CWT.)													
1998	15.00	15.30	15.10	14.70	14.30	14.10	12.90	15.10	16.80	17.40	17.50	18.20	15.50
1999	18.70	18.40	17.60	12.20	13.10	13.60	13.30	13.50	15.70	17.40	17.80	13.30	15.40
2000	13.10	13.00	13.00	13.10	13.60	13.90	14.40	14.30	14.30	14.10	14.50	14.60	13.80
2001	14.80	14.40	15.10	15.70	16.70	17.30	17.60	18.00	18.10	16.70	16.60	14.10	16.20
2002	14.30	13.90	13.50	13.40	13.00	12.80	12.80	12.80	12.70	12.90	13.00	12.90	13.20
2003	12.80	12.40	12.00	11.90	12.10	12.00	12.50	13.50	15.60	16.10	15.70	15.40	13.40
2004	14.20	14.40	15.70	16.70	20.20	20.30	18.90	16.20	16.50	16.70	16.80	17.00	17.00
2005	17.30	15.90	16.70	15.90	15.80	15.50	16.20	16.50	16.30	16.50	16.20	15.50	16.20
2006	15.40	14.90	14.00	13.00	13.00	12.90	13.30	13.40	13.60	14.60	14.70	14.70	14.00
2007	15.50	15.60	16.50	17.40	18.80	20.70	23.30	24.00	23.90	23.60	23.60	22.40	20.20
2008	22.50	21.10	18.70	20.10	19.30	20.50							

1/Calendar year average.

KENTUCKY ALL MILK PRICES Marketing Year Average, 1998 - 2007



PRICES RECEIVED BY FARMERS IN KENTUCKY BY MONTHS, 1998 - 2008

Year	Jan	Feb	Mar	Apr	May	Jun	Jul	Aug	Sep	Oct	Nov	Dec	Marketing Year Avg. ^{1/}
BARROWS AND GILTS (DOLLARS PER CWT.)													
1998	34.00	37.00	36.00	36.00	45.00	45.00	39.00	36.00	31.00	28.00	20.00	18.00	35.70
1999	25.00	26.00	25.00	28.00	34.00	33.00	29.00	35.00	31.00	32.00	32.00	34.00	28.80
2000	35.00	38.00	40.00	46.00	46.00	46.00	46.00	40.00	39.00	39.00	34.00	38.00	40.40
2001	34.00	37.00	44.00	44.00	48.00	50.00	50.00	49.00	43.00	38.00	34.00	33.00	42.30
2002	38.00	38.00	35.00	30.00	31.00	34.00	36.00	28.00	24.00	29.00	28.00	30.00	31.40
2003	32.00	33.00	34.00	35.00	41.00	46.00	43.00	40.00	40.00	37.00	34.00	34.00	36.80
2004	38.00	44.00	47.00	48.00	57.00	56.00	56.00	54.00	53.00	52.00	53.00	52.00	48.40
2005	52.00	50.00	49.00	49.00	54.00	49.00	49.00	50.00	49.00	47.00	43.00	44.00	49.30
2006 ^{2/}	41.00	42.00	43.00	40.00	47.00	53.00	50.00	50.00	49.00	47.00	44.00	44.00	45.60
2007	42.00	47.00	43.00	46.00	52.00	53.00	50.00	50.00	43.00	39.00	35.00	37.00	46.30
2008	34.00	41.00	36.00	42.00	55.00	53.00							
SOWS (DOLLARS PER CWT.)													
1998	26.00	27.00	27.00	27.00	28.00	28.00	26.00	22.00	18.00	20.00	16.00	13.00	24.70
1999	19.00	18.00	21.00	24.00	30.00	30.00	20.00	23.00	22.00	24.00	24.00	24.00	22.20
2000	33.00	38.00	34.00	38.00	41.00	36.00	35.00	35.00	35.00	34.00	29.00	30.00	34.20
2001	31.00	31.00	34.00	40.00	39.00	41.00	40.00	39.00	34.00	32.00	29.00	24.00	35.00
2002	25.00	27.00	30.00	24.00	23.00	21.00	18.00	18.00	16.00	20.00	21.00	22.00	22.30
2003	22.00	23.00	24.00	27.00	28.00	30.00	33.00	33.00	30.00	30.00	29.00	28.00	27.60
2004	28.00	35.00	40.00	39.00	41.00	46.00	50.00	49.00	43.00	42.00	42.00	44.00	40.30
2005	44.00	47.00	43.00	41.00	39.00	44.00	40.00	37.00	39.00	42.00	40.00	36.00	41.70
2006	35.00	31.00	33.00	28.00	30.00	32.00	32.00	34.00	37.00	37.00	35.00	31.00	33.30
2007	30.00	30.00	30.00	25.00	31.00	35.00	40.00	42.00	43.00	36.00	32.00	29.00	32.80
2008	26.00	27.00	28.00	21.00	30.00	30.00							
ALL HOGS (DOLLARS PER CWT.)													
1998	33.70	36.60	35.60	35.60	44.30	44.30	38.50	35.40	30.50	27.70	19.80	17.80	35.20
1999	24.80	25.70	24.80	27.80	33.80	32.90	28.60	34.50	30.60	31.70	31.70	33.60	28.50
2000	34.90	38.00	39.80	45.70	45.80	45.60	45.60	39.80	38.80	38.80	33.80	37.70	40.20
2001	33.90	36.80	43.60	43.80	47.60	49.60	49.60	48.60	42.60	37.80	33.80	32.60	42.00
2002	37.50	37.60	34.80	29.80	30.70	33.50	35.30	27.60	23.70	28.60	27.70	29.70	31.00
2003	31.60	32.60	33.60	34.70	40.50	45.40	42.60	39.70	39.60	36.70	33.80	33.90	36.40
2004	37.60	43.60	46.70	47.60	56.40	55.60	55.80	53.80	52.60	51.60	52.60	51.70	48.10
2005	51.70	49.90	49.70	48.70	53.40	48.80	48.60	49.50	48.60	46.80	42.90	43.70	49.10
2006 ^{2/}	40.80	41.60	42.60	39.50	46.30	52.20	49.30	49.40	48.50	46.60	43.60	43.50	45.30
2007	41.50	46.30	42.50	45.20	51.20	52.30	49.60	49.70	43.00	38.90	34.90	36.70	45.90
2008	33.70	40.40	35.70	41.20	54.00	52.10							

^{1/}Marketing year is December preceding year through November. Prices computed by weighting monthly prices by estimated percentage of sales made each month. ^{2/}Revised.

KENTUCKY ALL HOG PRICES Marketing Year Average, 1998 - 2007

