

## WINTER WHEAT COUNTY ESTIMATES – 2007

District and County	Acres Planted	Acres Harv. <sup>1/</sup>	Yield Harv. Acre	Production	District and County	Acres Planted	Acres Harv. <sup>1/</sup>	Yield Harv. Acre	Production
				<b>(Bushels)</b>					<b>(Bushels)</b>
Ballard	11,200	6,100	46	280,600	Oldham	1,000	900	67	60,300
Calloway	12,200	9,000	35	315,000	Combined Counties	6,300	1,300	41.3	53,700
Carlisle	7,400	5,300	47	249,100	<b>DISTRICT 4</b>	7,300	2,200	51.8	114,000
Fulton	17,000	16,400	45	738,000	Bourbon	2,400	1,000	56	56,000
Graves	17,800	14,400	39	561,600	Lincoln	4,100	800	51	40,800
Hickman	18,500	17,400	46	800,400	Mason	1,600	600	50	30,000
Trigg	13,600	9,200	58	533,600	Shelby	3,400	2,300	53	121,900
Combined Counties	9,800	6,900	40.5	279,300	Combined Counties	20,200	5,900	42.2	248,800
<b>DISTRICT 1</b>	107,500	84,700	44.4	3,757,600	<b>DISTRICT 5</b>	31,700	10,600	46.9	497,500
Caldwell	8,500	4,500	54	243,000	Pulaski	5,400	1,100	51	56,100
Christian	49,500	31,100	54	1,679,400	Wayne	2,000	900	59	53,100
Crittenden	1,100	800	43	34,400	Combined Counties	4,400	1,000	44.5	44,500
Daviess	12,500	8,000	62	496,000	<b>DISTRICT 6</b>	11,800	3,000	51.2	153,700
Henderson	6,000	2,800	50	140,000	<b>KENTUCKY</b>	440,000	250,000	49.0	12,250,000
Hopkins	4,400	2,100	59	123,900					
Logan	37,500	18,500	49	906,500					
McLean	6,500	4,600	58	266,800					
Muhlenberg	1,300	1,200	50	60,000					
Simpson	25,500	11,000	44	484,000					
Todd	31,000	16,000	48	768,000					
Union	15,000	11,200	47	526,400					
Combined Counties	5,300	3,300	45.5	150,300					
<b>DISTRICT 2</b>	204,100	115,100	51.1	5,878,700					
Adair	4,800	700	57	39,900					
Allen	1,200	900	53	47,700					
Hardin	3,400	2,500	52	130,000					
Larue	4,000	3,000	64	192,000					
Meade	4,400	3,900	61	237,900					
Nelson	5,500	3,400	42	142,800					
Warren	14,800	6,700	51	341,700					
Combined Counties	39,500	13,300	53.9	716,500					
<b>DISTRICT 3</b>	77,600	34,400	53.7	1,848,500					

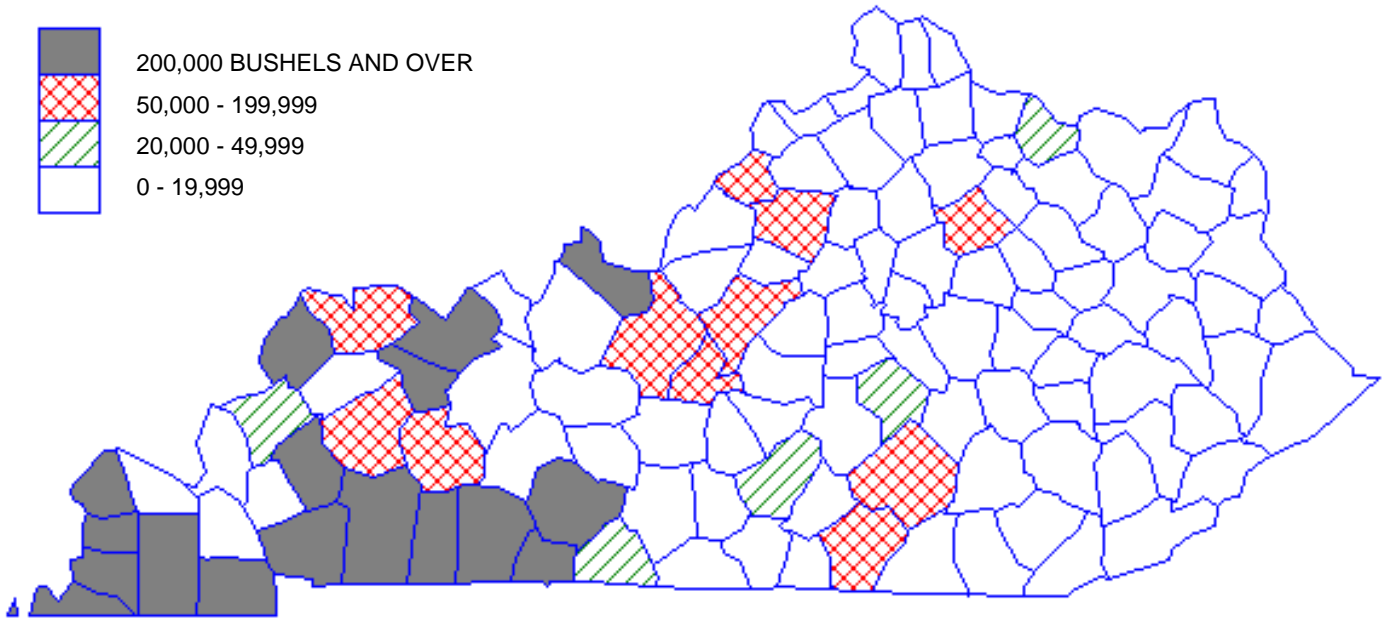
### TOP PRODUCING COUNTIES

(Bushels)

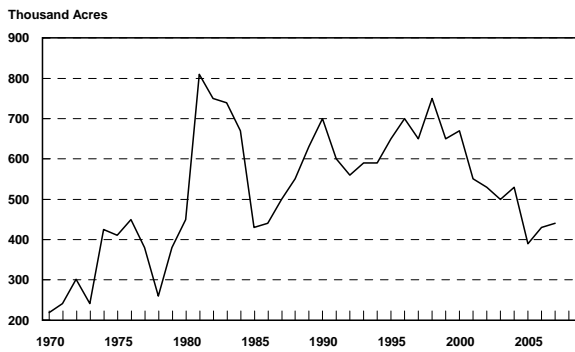
Christian	1,679,400
Logan	906,500
Hickman	800,400
Todd	768,000
Fulton	738,000

<sup>1/</sup>Harvested for Grain.

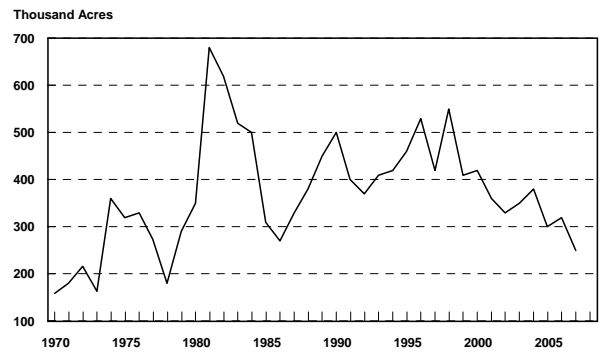
# WINTER WHEAT PRODUCTION – 2007



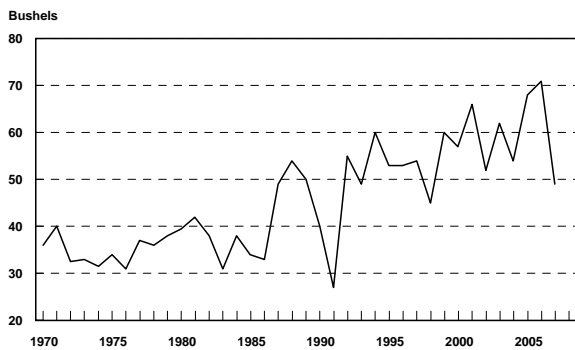
**Kentucky Winter Wheat  
All Acres Planted  
(1970 - 2007)**



**Kentucky Winter Wheat  
Acres Harvested for Grain  
(1970 - 2007)**



**Kentucky Winter Wheat  
Yield Per Harvested Acre  
(1970 - 2007)**



**Kentucky Winter Wheat  
Total Grain Production  
(1970 - 2007)**

