

## PRICES RECEIVED BY FARMERS IN KENTUCKY BY MONTHS, 1997 – 2006

Year	Nov	Dec	Jan <u>1/</u>	Feb <u>1/</u>	Mar <u>1/</u>	Apr <u>1/</u>	May	Jun	Jul	Aug	Sep	Oct	Marketing Year Avg
<b>BURLEY TOBACCO - TYPE 31</b>													
(DOLLARS PER POUND)													
1997	1.905	1.920	1.885	1.810	1.755	1.700	-	-	-	-	-	-	1.886
1998	1.910	1.910	1.900	1.850	1.625	-	-	-	-	-	-	-	1.903
1999	1.895	1.910	1.905	1.875	1.770	-	-	-	-	-	-	-	1.900
2000 <u>2/</u>	1.975	1.985	1.955	1.930	-	-	-	-	-	-	-	-	1.968
2001	1.980	1.985	1.975	1.960	-	-	-	-	-	-	-	-	1.977
2002	1.980	1.985	1.985	1.940	1.760	-	-	-	-	-	-	-	1.980
2003	1.990	1.985	1.980	1.955	-	-	-	-	-	-	-	-	1.982
2004	2.000	2.000	2.000	1.990	2.000	-	-	-	-	-	-	-	2.000
2005	-	-	-	-	-	-	-	-	-	-	-	-	1.560
<b>2006</b>	-	-	-	-	-	-	-	-	-	-	-	-	<b>1.650</b>

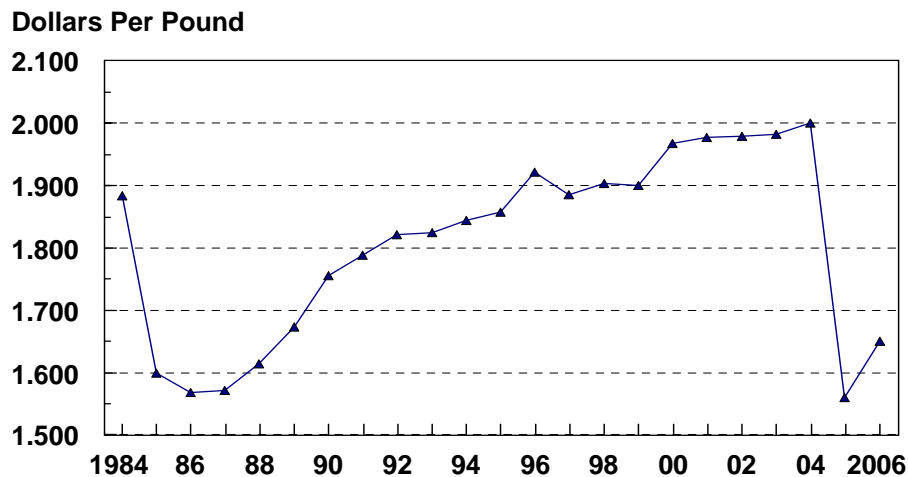
1/Following year. 2/Beginning in 2000 includes contract sales.

## PRICES RECEIVED BY FARMERS IN KENTUCKY BY YEAR, 1997 – 2006 1/

Crop Year	Eastern Dark Fire-Cured (Type 22)	Western Dark Fire-Cured (Type 23)	Dark Fire-Cured <u>2/</u>	One Sucker Air-Cured (Type 35)	Green River Air-Cured (Type 36)	Dark Air-Cured <u>2/</u>
<b>DARK TOBACCO</b>						
(DOLLARS PER POUND)						
1997	2.268	2.242		2.011	2.034	
1998	2.259	2.159		1.952	1.974	
1999	2.312	2.260		2.066	1.982	
2000	2.201	2.082		1.965	1.940	
2001	2.195	2.101		1.835	1.822	
2002	2.398	2.362		2.135	2.061	
2003	2.480	2.450		2.223	2.086	
2004			2.533			2.205
2005			2.350			2.130
<b>2006</b>			<b>2.400</b>			<b>2.200</b>

1/Marketing Year Average. Prices include country sales. 2/Four dark tobacco types were combined into two groups. Type 22 and Type 23 are in dark fire-cured. One Sucker Type 35 and Green River Type 36 are in dark air-cured.

### 1984 - 2006 BURLEY TOBACCO PRICES MARKETING YEAR AVERAGE

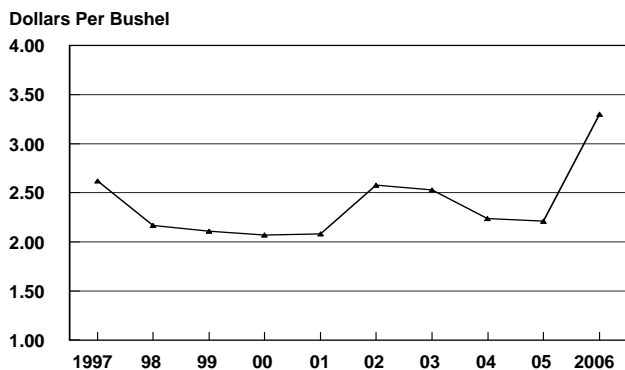


## PRICES RECEIVED BY FARMERS IN KENTUCKY BY MONTHS, 1997 - 2007

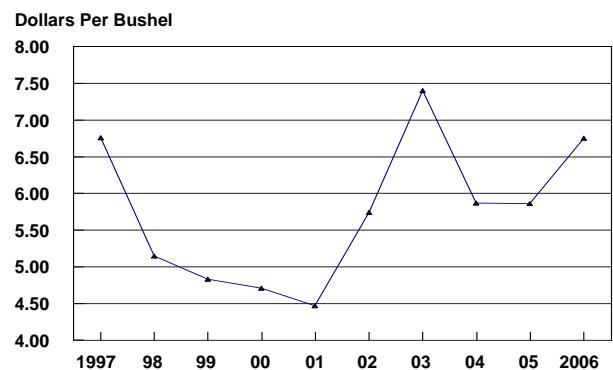
Year	Jan	Feb	Mar	Apr	May	Jun	Jul	Aug	Sep	Oct	Nov	Dec	Marketing Year Avg 1/
<b>CORN</b>													
(DOLLARS PER BUSHEL)													
1997	3.00	2.85	2.93	3.04	2.94	2.78	2.61	2.67	2.55	2.67	2.68	2.74	2.62
1998	2.76	2.74	2.75	2.58	2.51	2.48	2.34	2.02	1.94	2.15	2.29	2.22	2.17
1999	2.31	2.24	2.29	2.27	2.23	2.21	1.94	1.95	1.97	1.95	1.96	2.22	2.11
2000	2.17	2.23	2.26	2.29	2.35	2.19	1.85	1.95	1.85	1.85	2.00	2.23	2.07
2001	2.18	2.28	2.20	2.08	2.08	2.07	2.12	2.13	2.00	1.90	1.94	2.16	2.08
2002	2.15	2.14	2.10	1.99	2.01	2.14	2.32	2.39	2.55	2.46	2.60	2.56	2.58
2003	2.55	2.70	2.58	2.61	2.78	2.72	2.57	2.32	2.24	2.27	2.39	2.45	2.53
2004	2.48	2.74	2.90	3.09	3.06	3.05	2.71	2.40	2.33	2.16	2.11	2.12	2.24
2005 2/	2.37	2.13	2.20	2.19	2.21	2.26	2.35	2.21	2.05	1.89	1.99	2.11	2.21
2006 2/	2.21	2.25	2.33	2.36	2.46	2.46	2.43	2.37	2.34	2.63	3.15	3.26	3.30
<b>2007</b>	<b>3.16</b>	<b>3.80</b>	<b>3.84</b>	<b>3.58</b>	<b>3.70</b>	<b>3.87</b>							
<b>WINTER WHEAT</b>													
(DOLLARS PER BUSHEL)													
1997	3.84	3.57	3.73	3.50	3.80	3.32	3.18	3.41	3.45	3.31	3.02	3.28	3.24
1998	3.31	2.97	3.13	2.68	2.83	2.50	2.15	2.06	1.97	2.18	2.28	2.10	2.26
1999	2.51	2.38	2.13	2.03	1.98	2.21	2.08	2.16	2.20	2.00	2.21	2.21	2.19
2000	2.50	2.32	2.66	2.15	2.32	2.34	2.10	2.06	2.04	1.96	2.14	2.31	2.26
2001	2.31	2.58	2.69	2.15	2.40	2.35	2.47	2.58	2.45	2.40	2.58	2.76	2.50
2002	2.75	2.83	2.71	2.58	2.48	2.67	2.94	3.09	3.38	3.42	3.38	3.67	3.01
2003	3.49	3.40	3.14	3.06	3.25	3.12	3.08	3.38	3.32	3.07	3.49	3.31	3.17
2004	3.25	3.44	3.90	3.54	3.39	3.15	2.91	2.97	2.55	2.64	2.51	2.89	2.96
2005 2/	3.10	2.93	2.77	3.17	2.69	3.22	3.28	3.07	3.05	3.17	3.43	3.18	3.31
2006	3.52	3.57	C	C	3.56	3.35	3.14	3.43	3.41	4.03	4.14	4.50	3.45
<b>2007</b>	<b>3.90</b>	<b>4.03</b>	<b>4.17</b>	<b>C</b>	<b>4.33</b>	<b>4.93</b>							
<b>SOYBEANS</b>													
(DOLLARS PER BUSHEL)													
1997	7.34	7.63	7.96	8.36	8.72	8.35	7.78	7.55	7.02	6.83	7.15	6.94	6.76
1998	6.89	6.78	6.57	6.41	6.38	6.30	6.28	5.66	5.27	5.40	5.63	5.52	5.15
1999	5.48	4.91	4.80	4.73	4.63	4.59	4.22	4.68	4.76	4.63	4.55	4.62	4.83
2000	4.85	5.06	5.16	5.29	5.40	5.12	4.66	4.74	4.81	4.62	4.58	4.94	4.71
2001	4.88	4.67	4.56	4.38	4.47	4.66	5.05	5.02	4.57	4.25	4.23	4.35	4.47
2002	4.45	4.46	4.54	4.69	4.78	5.06	5.62	5.54	5.56	5.56	5.72	5.65	5.74
2003	5.77	5.78	5.83	6.00	6.25	6.16	5.98	5.79	6.05	6.80	7.24	7.29	7.40
2004	7.25	8.11	9.04	9.82	8.94	9.12	8.71	6.59	6.01	5.76	5.65	5.61	5.87
2005 2/	5.82	5.65	6.12	6.17	6.49	6.84	6.87	6.32	5.60	5.70	5.74	5.98	5.86
2006 2/	6.11	5.96	5.79	5.65	5.88	5.83	5.79	5.50	5.37	5.85	6.42	6.49	6.75
<b>2007</b>	<b>6.53</b>	<b>7.07</b>	<b>6.98</b>	<b>7.11</b>	<b>7.36</b>	<b>7.71</b>							

1/Marketing year average is the weighted monthly price for the marketing year. Marketing year for Corn & Soybeans is September through August and for Winter Wheat is July through June. 2/Revised. C-Confidential.

**KENTUCKY CORN PRICES**  
Marketing Year Average, 1997 - 2006



**KENTUCKY SOYBEAN PRICES**  
Marketing Year Average, 1997 - 2006

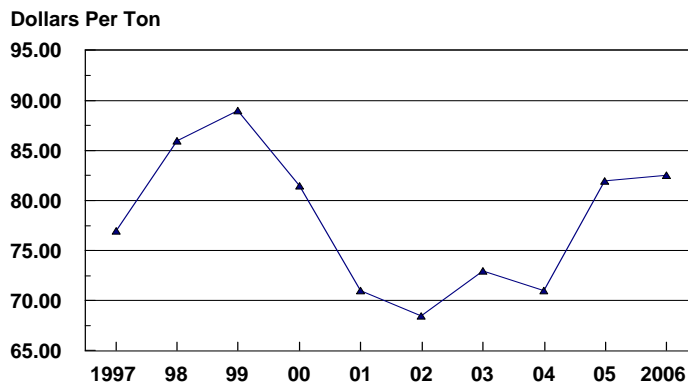


## PRICES RECEIVED BY FARMERS IN KENTUCKY BY MONTHS, 1997 - 2007

Year	Jan	Feb	Mar	Apr	May	Jun	Jul	Aug	Sep	Oct	Nov	Dec	Marketing Year Avg <sup>1/</sup>
<b>ALFALFA HAY <sup>2/</sup></b> (DOLLARS PER TON)													
1997	104.00	108.00	104.00	98.00	95.00	91.00	91.00	95.00	100.00	110.00	108.00	104.00	99.00
1998	103.00	107.00	107.00	110.00	110.00	105.00	111.00	111.00	107.00	111.00	107.00	107.00	112.00
1999	110.00	125.00	123.00	125.00	119.00	118.00	120.00	120.00	120.00	120.00	123.00	120.00	120.00
2000	120.00	123.00	122.00	117.00	114.00	110.00	100.00	100.00	95.00	110.00	110.00	110.00	109.00
2001	110.00	125.00	110.00	110.00	100.00	100.00	95.00	90.00	95.00	95.00	105.00	100.00	99.50
2002	110.00	105.00	105.00	95.00	95.00	95.00	100.00	95.00	105.00	100.00	105.00	110.00	102.00
2003	100.00	105.00	105.00	105.00	110.00	110.00	110.00	115.00	110.00	115.00	115.00	110.00	107.00
2004	100.00	100.00	100.00	100.00	100.00	100.00	100.00	100.00	100.00	100.00	100.00	100.00	103.00
2005	105.00	105.00	110.00	110.00	115.00	115.00	115.00	115.00	120.00	120.00	120.00	120.00	118.00
2006	120.00	120.00	120.00	120.00	115.00	115.00	115.00	120.00	120.00	120.00	120.00	120.00	119.00
<b>2007</b>	<b>125.00</b>	<b>135.00</b>	<b>135.00</b>	<b>135.00</b>	<b>135.00</b>	<b>135.00</b>	<b>135.00</b>						
<b>ALL OTHER HAY <sup>2/</sup></b> (DOLLARS PER TON)													
1997	67.00	69.00	68.00	66.00	63.00	59.00	59.00	62.00	65.00	72.00	71.00	68.00	66.00
1998	67.00	70.00	70.00	72.00	73.00	68.00	72.00	72.00	70.00	72.00	70.00	70.00	73.00
1999	72.00	81.00	80.00	81.00	77.00	77.00	78.00	78.00	78.00	78.00	81.00	78.00	78.00
2000	78.00	80.00	79.00	76.00	74.00	72.00	65.00	65.00	62.00	72.00	72.00	72.00	70.00
2001	72.00	75.00	66.00	64.00	58.00	58.00	55.00	52.00	55.00	55.00	61.00	58.00	58.00
2002	64.00	61.00	61.00	52.00	55.00	55.00	58.00	55.00	61.00	58.00	61.00	64.00	59.00
2003	58.00	61.00	61.00	61.00	64.00	64.00	64.00	67.00	64.00	67.00	67.00	64.00	62.50
2004	58.00	58.00	58.00	58.00	58.00	58.00	58.00	58.00	58.00	58.00	58.00	58.00	59.00
2005	61.00	61.00	64.00	64.00	67.00	67.00	67.00	67.00	70.00	70.00	70.00	70.00	68.50
2006	70.00	70.00	70.00	70.00	70.00	70.00	70.00	70.00	70.00	70.00	70.00	70.00	70.00
<b>2007</b>	<b>70.00</b>	<b>75.00</b>	<b>75.00</b>	<b>75.00</b>	<b>75.00</b>	<b>75.00</b>	<b>75.00</b>						
<b>ALL HAY <sup>2/</sup></b> (DOLLARS PER TON)													
1997	76.00	83.00	81.00	80.00	86.00	71.00	70.00	78.00	77.00	75.00	81.00	75.00	77.00
1998	76.00	83.00	84.00	88.00	95.00	82.00	86.00	92.00	83.00	75.00	80.00	78.00	86.00
1999	82.00	97.00	96.00	100.00	103.00	89.00	92.00	95.00	88.00	83.00	91.00	88.00	89.00
2000	88.00	90.00	88.00	93.00	92.00	83.00	75.00	81.00	72.00	80.00	80.00	83.00	81.50
2001	82.00	88.00	78.00	87.00	84.00	70.00	68.00	69.00	67.00	64.00	71.00	70.00	71.00
2002	76.00	72.00	73.00	73.00	67.00	62.00	63.00	68.00	73.00	67.00	71.00	74.00	68.50
2003	68.00	70.00	75.00	75.00	78.00	72.00	70.00	82.00	77.00	78.00	78.00	74.00	73.00
2004	68.00	67.00	71.00	72.00	75.00	65.00	65.00	69.00	72.00	70.00	71.00	68.00	71.00
2005 <sup>3/</sup>	73.00	76.00	87.00	86.00	85.00	75.00	75.00	79.00	86.00	84.00	85.00	81.00	82.00
2006 <sup>3/</sup>	84.00	86.00	94.00	93.00	88.00	78.00	78.00	83.00	87.00	84.00	86.00	82.00	82.50
<b>2007</b>	<b>85.00</b>	<b>95.00</b>	<b>105.00</b>	<b>104.00</b>	<b>98.00</b>	<b>86.00</b>							

<sup>1/</sup>Marketing year for Hay is May - April. Marketing year average prices were computed by weighting monthly prices by the estimated percentage of sales made each month. <sup>2/</sup>Baled. <sup>3/</sup>Revised.

### ALL HAY AVERAGE PRICES Marketing Year Average, 1997 – 2006



## PRICES RECEIVED BY FARMERS IN KENTUCKY BY MONTHS, 1997 - 2007

Year	Jan	Feb	Mar	Apr	May	Jun	Jul	Aug	Sep	Oct	Nov	Dec	Annual Avg <sup>1/</sup>
<b>BEEF COWS <sup>2/</sup></b> (DOLLARS PER CWT.)													
1997	28.00	33.00	36.00	38.00	39.00	39.00	39.00	36.00	34.00	33.00	32.00	32.00	34.80
1998	35.00	37.00	37.00	38.00	38.00	37.00	36.00	35.00	33.00	30.00	30.00	30.00	34.80
1999	32.00	34.00	35.00	35.00	37.00	36.00	36.00	35.00	33.00	33.00	34.00	35.00	34.80
2000	34.00	36.00	38.00	40.00	41.00	41.00	40.00	39.00	38.00	37.00	37.00	36.00	37.80
2001	38.00	42.00	42.00	44.00	45.00	47.00	44.00	44.00	42.00	37.00	36.00	36.00	40.70
2002	36.00	40.00	41.00	40.00	41.00	41.00	37.00	36.00	33.00	34.00	32.00	33.00	37.00
2003	32.00	36.00	36.00	38.00	41.00	41.00	43.00	42.00	43.00	42.00	45.00	47.00	43.20
2004	44.00	44.00	44.00	47.00	51.00	52.00	54.00	53.00	52.00	50.00	49.00	48.00	49.70
2005	47.00	50.00	50.00	52.00	55.00	55.00	52.00	50.00	48.00	45.00	44.00	45.00	49.90
2006	44.00	47.00	48.00	48.00	48.00	47.00	46.00	46.00	46.00	45.00	43.00	42.00	46.00
<b>2007</b>	<b>42.00</b>	<b>45.00</b>	<b>44.00</b>	<b>47.00</b>	<b>50.00</b>	<b>46.00</b>							
<b>STEERS AND HEIFERS <sup>3/</sup></b> (DOLLARS PER CWT.)													
1997	57.00	61.00	64.00	66.00	70.00	70.00	73.00	72.00	71.00	67.00	65.00	67.00	66.90
1998	70.00	71.00	72.00	73.00	73.00	70.00	64.00	63.00	60.00	61.00	61.00	61.00	66.60
1999	64.00	67.00	67.00	67.00	67.00	70.00	71.00	71.00	72.00	74.00	74.00	77.00	69.50
2000	80.00	81.00	84.00	85.00	85.00	85.00	86.00	84.00	80.00	80.00	82.00	83.00	82.70
2001	83.00	81.00	84.00	85.00	85.00	88.00	86.00	84.00	82.00	77.00	73.00	76.00	81.60
2002	76.00	77.00	78.00	74.00	74.00	73.00	72.00	72.00	71.00	72.00	72.00	74.00	73.80
2003	74.00	73.00	73.00	76.00	78.00	80.00	83.00	85.00	89.00	88.00	87.00	88.00	81.20
2004	84.00	85.00	89.00	91.00	97.00	103.00	105.00	108.00	103.00	100.00	97.00	95.00	95.10
2005	96.00	97.00	103.00	109.00	112.00	109.00	103.00	104.00	107.00	104.00	103.00	104.00	104.00
2006	104.00	104.00	102.00	100.00	101.00	105.00	106.00	107.00	107.00	98.00	88.00	87.00	101.00
<b>2007</b>	<b>84.00</b>	<b>87.00</b>	<b>93.00</b>	<b>99.00</b>	<b>100.00</b>	<b>96.00</b>							
<b>BEEF CATTLE <sup>4/</sup></b> (DOLLARS PER CWT.)													
1997	50.00	54.30	57.30	59.30	62.60	62.60	64.80	63.40	62.10	58.80	57.10	58.60	59.20
1998	61.60	63.10	63.60	64.60	64.50	62.10	57.30	56.30	53.30	53.60	53.60	53.60	59.00
1999	56.30	59.10	59.30	59.30	59.80	61.80	62.60	62.40	62.60	64.20	64.40	66.90	59.30
2000	69.00	70.20	73.00	74.20	74.40	74.40	75.00	73.20	69.90	69.40	71.20	71.70	71.90
2001	72.20	71.60	73.90	75.20	75.40	78.20	75.90	74.40	72.40	67.40	64.10	66.40	71.70
2002	66.40	68.10	69.10	65.80	66.10	65.30	63.60	63.40	61.90	62.90	62.40	64.20	64.90
2003	63.90	64.10	64.10	66.90	69.10	70.60	73.40	74.70	78.00	77.00	76.90	78.20	72.30
2004	74.40	75.20	78.20	80.40	86.00	90.80	92.80	94.80	90.80	88.00	85.50	83.70	84.30
2005	84.20	85.70	90.30	95.30	98.30	96.00	90.80	91.00	92.80	89.80	88.80	89.80	90.90
2006	89.60	90.30	89.00	87.50	88.30	91.10	91.60	92.40	92.40	85.30	77.20	76.20	87.60
<b>2007</b>	<b>73.90</b>	<b>76.90</b>	<b>81.20</b>	<b>86.50</b>	<b>88.00</b>	<b>84.00</b>							
<b>CALVES <sup>5/</sup></b> (DOLLARS PER CWT.)													
1997	56.00	64.00	71.00	75.00	78.00	78.00	81.00	77.00	75.00	70.00	69.00	73.00	72.20
1998	77.00	80.00	84.00	87.00	83.00	77.00	69.00	70.00	65.00	66.00	66.00	68.00	74.90
1999	75.00	78.00	79.00	79.00	78.00	79.00	79.00	79.00	81.00	81.00	81.00	87.00	80.20
2000	93.00	94.00	100.00	102.00	99.00	97.00	102.00	97.00	92.00	92.00	94.00	94.00	96.10
2001	98.00	99.00	103.00	102.00	99.00	102.00	99.00	96.00	95.00	88.00	84.00	90.00	96.20
2002	92.00	95.00	95.00	89.00	88.00	83.00	80.00	80.00	79.00	80.00	80.00	82.00	84.90
2003	84.00	86.00	86.00	90.00	91.00	91.00	92.00	93.00	98.00	96.00	98.00	99.00	92.00
2004	99.00	101.00	108.00	111.00	115.00	118.00	120.00	123.00	118.00	114.00	112.00	110.00	112.00
2005	113.00	117.00	126.00	132.00	133.00	131.00	120.00	120.00	123.00	118.00	118.00	121.00	123.00
2006	126.00	131.00	128.00	126.00	124.00	126.00	124.00	124.00	125.00	114.00	104.00	102.00	121.00
<b>2007</b>	<b>99.00</b>	<b>105.00</b>	<b>112.00</b>	<b>115.00</b>	<b>114.00</b>	<b>109.00</b>							

<sup>1/</sup>Annual average prices were computed by weighting monthly prices by the estimated percentage of sales made each month. <sup>2/</sup>Beef cows and cull dairy cows sold for slaughter. <sup>3/</sup>500 lbs. and over. <sup>4/</sup>"Steers and heifers" and "cows" combined. <sup>5/</sup>Under 500 lbs.

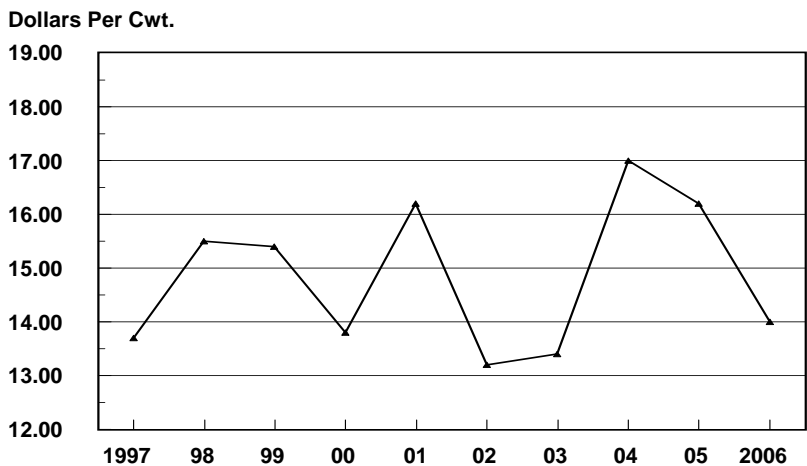
## PRICES RECEIVED BY FARMERS IN KENTUCKY BY MONTHS, 1997 - 2007

Year	Jan	Feb	Mar	Apr	May	Jun	Jul	Aug	Sep	Oct	Nov	Dec	Annual Avg <sup>1/</sup>
<b>MILK COWS</b> (DOLLARS PER HEAD)													
1997	1,000	-	-	1,050	-	-	1,040	-	-	1,020	-	-	1,030
1998	1,000	-	-	1,000	-	-	1,040	-	-	1,090	-	-	1,030
1999	1,140	-	-	1,170	-	-	1,180	-	-	1,290	-	-	1,200
2000	1,240	-	-	1,250	-	-	1,310	-	-	1,310	-	-	1,280
2001	1,320	-	-	1,340	-	-	1,540	-	-	1,650	-	-	1,460
2002	1,540	-	-	1,650	-	-	1,580	-	-	1,450	-	-	1,550
2003	1,350	-	-	1,330	-	-	1,310	-	-	1,360	-	-	1,340
2004	1,310	-	-	1,550	-	-	1,640	-	-	1,640	-	-	1,540
2005	1,550	-	-	1,690	-	-	1,780	-	-	1,790	-	-	1,700
2006	1,810	-	-	1,830	-	-	1,700	-	-	1,600	-	-	1,740
<b>2007</b>	<b>1,590</b>	-	-	<b>1,640</b>	-	-							

<b>MILK, ALL</b> (DOLLARS PER CWT.)													
1997	13.70	13.40	13.90	14.00	14.00	13.20	12.50	12.60	13.00	14.20	15.00	15.00	13.70
1998	15.00	15.30	15.10	14.70	14.30	14.10	12.90	15.10	16.80	17.40	17.50	18.20	15.50
1999	18.70	18.40	17.60	12.20	13.10	13.60	13.30	13.50	15.70	17.40	17.80	13.30	15.40
2000	13.10	13.00	13.00	13.10	13.60	13.90	14.40	14.30	14.30	14.10	14.50	14.60	13.80
2001	14.80	14.40	15.10	15.70	16.70	17.30	17.60	18.00	18.10	16.70	16.60	14.10	16.20
2002	14.30	13.90	13.50	13.40	13.00	12.80	12.80	12.80	12.70	12.90	13.00	12.90	13.20
2003	12.80	12.40	12.00	11.90	12.10	12.00	12.50	13.50	15.60	16.10	15.70	15.40	13.40
2004	14.20	14.40	15.70	16.70	20.20	20.30	18.90	16.20	16.50	16.70	16.80	17.00	17.00
2005	17.30	15.90	16.70	15.90	15.80	15.50	16.20	16.50	16.30	16.50	16.20	15.50	16.20
2006	15.40	14.90	14.00	13.00	13.00	12.90	13.30	13.40	13.60	14.60	14.70	14.70	14.00
<b>2007</b>	<b>15.50</b>	<b>15.60</b>	<b>16.50</b>	<b>17.40</b>	<b>18.80</b>	<b>20.70</b>							

<sup>1/</sup>Calendar year average.

### KENTUCKY ALL MILK PRICES Marketing Year Average, 1997 - 2006



## PRICES RECEIVED BY FARMERS IN KENTUCKY BY MONTHS, 1997 - 2007

Year	Jan	Feb	Mar	Apr	May	Jun	Jul	Aug	Sep	Oct	Nov	Dec	Marketing Year Avg. 1/
<b>BARROWS AND GILTS</b> (DOLLARS PER CWT.)													
1997	53.00	52.00	49.00	54.00	58.00	57.00	60.00	56.00	53.00	48.00	46.00	41.00	53.00
1998	34.00	37.00	36.00	36.00	45.00	45.00	39.00	36.00	31.00	28.00	20.00	18.00	35.70
1999	25.00	26.00	25.00	28.00	34.00	33.00	29.00	35.00	31.00	32.00	32.00	34.00	28.80
2000	35.00	38.00	40.00	46.00	46.00	46.00	46.00	40.00	39.00	39.00	34.00	38.00	40.40
2001	34.00	37.00	44.00	44.00	48.00	50.00	50.00	49.00	43.00	38.00	34.00	33.00	42.30
2002	38.00	38.00	35.00	30.00	31.00	34.00	36.00	28.00	24.00	29.00	28.00	30.00	31.40
2003	32.00	33.00	34.00	35.00	41.00	46.00	43.00	40.00	40.00	37.00	34.00	34.00	36.80
2004	38.00	44.00	47.00	48.00	57.00	56.00	56.00	54.00	53.00	52.00	53.00	52.00	48.40
2005	52.00	50.00	49.00	49.00	54.00	49.00	49.00	50.00	49.00	47.00	43.00	44.00	49.30
2006	41.00	42.00	43.00	40.00	47.00	53.00	50.00	50.00	49.00	47.00	44.00	45.00	45.60
<b>2007</b>	<b>42.00</b>	<b>47.00</b>	<b>43.00</b>	<b>46.00</b>	<b>52.00</b>	<b>53.00</b>							
<b>SOWS</b> (DOLLARS PER CWT.)													
1997	45.00	46.00	45.00	45.00	47.00	46.00	45.00	43.00	40.00	38.00	36.00	35.00	43.30
1998	26.00	27.00	27.00	27.00	28.00	28.00	26.00	22.00	18.00	20.00	16.00	13.00	24.70
1999	19.00	18.00	21.00	24.00	30.00	30.00	20.00	23.00	22.00	24.00	24.00	24.00	22.20
2000	33.00	38.00	34.00	38.00	41.00	36.00	35.00	35.00	35.00	34.00	29.00	30.00	34.20
2001	31.00	31.00	34.00	40.00	39.00	41.00	40.00	39.00	34.00	32.00	29.00	24.00	35.00
2002	25.00	27.00	30.00	24.00	23.00	21.00	18.00	18.00	16.00	20.00	21.00	22.00	22.30
2003	22.00	23.00	24.00	27.00	28.00	30.00	33.00	33.00	30.00	30.00	29.00	28.00	27.60
2004	28.00	35.00	40.00	39.00	41.00	46.00	50.00	49.00	43.00	42.00	42.00	44.00	40.30
2005	44.00	47.00	43.00	41.00	39.00	44.00	40.00	37.00	39.00	42.00	40.00	36.00	41.70
2006	35.00	31.00	33.00	28.00	30.00	32.00	32.00	34.00	37.00	37.00	35.00	31.00	33.30
<b>2007</b>	<b>30.00</b>	<b>30.00</b>	<b>30.00</b>	<b>25.00</b>	<b>31.00</b>	<b>35.00</b>							
<b>ALL HOGS</b> (DOLLARS PER CWT.)													
1997	52.70	51.80	48.80	53.60	57.60	56.60	59.40	55.50	52.50	47.60	45.60	40.80	52.60
1998	33.70	36.60	35.60	35.60	44.30	44.30	38.50	35.40	30.50	27.70	19.80	17.80	35.20
1999	24.80	25.70	24.80	27.80	33.80	32.90	28.60	34.50	30.60	31.70	31.70	33.60	28.50
2000	34.90	38.00	39.80	45.70	45.80	45.60	45.60	39.80	38.80	38.80	33.80	37.70	40.20
2001	33.90	36.80	43.60	43.80	47.60	49.60	49.60	48.60	42.60	37.80	33.80	32.60	42.00
2002	37.50	37.60	34.80	29.80	30.70	33.50	35.30	27.60	23.70	28.60	27.70	29.70	31.00
2003	31.60	32.60	33.60	34.70	40.50	45.40	42.60	39.70	39.60	36.70	33.80	33.90	36.40
2004	37.60	43.60	46.70	47.60	56.40	55.60	55.80	53.80	52.60	51.60	52.60	51.70	48.10
2005	51.70	49.90	49.70	48.70	53.40	48.80	48.60	49.50	48.60	46.80	42.90	43.70	49.10
2006	40.80	41.60	42.60	39.50	46.30	52.20	49.30	49.40	48.50	46.60	43.60	44.40	45.30
<b>2007</b>	<b>41.50</b>	<b>46.30</b>	<b>42.50</b>	<b>45.20</b>	<b>51.20</b>	<b>52.30</b>							

1/Marketing year is December preceding year through November. Prices computed by weighting monthly prices by estimated percentage of sales made each month.

