

WINTER WHEAT COUNTY ESTIMATES – 2006

District and County	Acres Planted	Acres Harv. <u>1/</u>	Yield Harv. Acre	Production	District and County	Acres Planted	Acres Harv. <u>1/</u>	Yield Harv. Acre	Production
				(Bushels)					(Bushels)
Ballard	12,200	10,900	59	643,100	Henry	1,600	600	50	30,000
Calloway	7,200	6,200	61	378,200	Oldham	1,200	900	77	69,300
Carlisle	4,700	3,900	60	234,000	Other Counties <u>2/</u>	5,700	1,300	51.7	67,200
Fulton	11,000	10,800	68	734,400	DISTRICT 4	8,500	2,800	59.5	166,500
Graves	13,500	12,600	65	819,000	Bourbon	2,500	1,300	60	78,000
Hickman	13,800	13,500	60	810,000	Fayette	1,300	700	50	35,000
Livingston	1,200	900	58	52,200	Jessamine	1,200	800	53	42,400
Lyon	1,600	1,000	70	70,000	Lincoln	4,200	900	52	46,800
McCracken	3,200	2,900	58	168,200	Mercer	1,000	500	52	26,000
Marshall	3,200	2,900	53	153,700	Shelby	5,100	2,800	60	168,000
Trigg	12,900	11,500	79	908,500	Spencer	1,700	1,000	51	51,000
DISTRICT 1	84,500	77,100	64.5	4,971,300	Washington	3,500	900	61	54,900
Caldwell	10,200	9,200	85	782,000	Other Counties <u>2/</u>	13,500	2,500	61.0	152,500
Christian	48,000	45,500	78	3,549,000	DISTRICT 5	34,000	11,400	57.4	654,600
Crittenden	2,000	1,500	65	97,500	Pulaski	5,900	1,000	63	63,000
Daviess	12,200	11,000	69	759,000	Wayne	2,100	900	77	69,300
Hancock	2,100	1,700	76	129,200	Other Counties <u>2/</u>	5,500	1,100	45.3	49,800
Henderson	7,000	6,600	59	389,400	DISTRICT 6	13,500	3,000	60.7	182,100
Hopkins	4,800	4,500	72	324,000	KENTUCKY	430,000	320,000	71.0	22,720,000
Logan	36,000	32,500	79	2,567,500					
McLean	10,900	10,100	71	717,100					
Muhlenberg	2,100	1,800	55	99,000					
Ohio	1,800	1,300	58	75,400					
Simpson	23,500	22,100	79	1,745,900					
Todd	27,000	25,700	77	1,978,900					
Union	14,000	12,800	65	832,000					
Webster	2,400	1,900	67	127,300					
DISTRICT 2	204,000	188,200	75.3	14,173,200					
Allen	1,500	600	60	36,000					
Barren	8,500	2,100	75	157,500					
Breckinridge	4,100	2,300	55	126,500					
Bullitt	1,600	1,200	58	69,600					
Butler	1,200	800	60	48,000					
Grayson	2,300	900	60	54,000					
Hardin	3,900	2,400	70	168,000					
Larue	4,200	1,700	73	124,100					
Marion	7,000	2,400	50	120,000					
Meade	4,600	3,400	73	248,200					
Nelson	7,000	4,000	46	184,000					
Taylor	4,200	900	59	53,100					
Warren	15,000	12,500	85	1,062,500					
Other Counties <u>2/</u>	20,400	2,300	52.5	120,800					
DISTRICT 3	85,500	37,500	68.6	2,572,300					

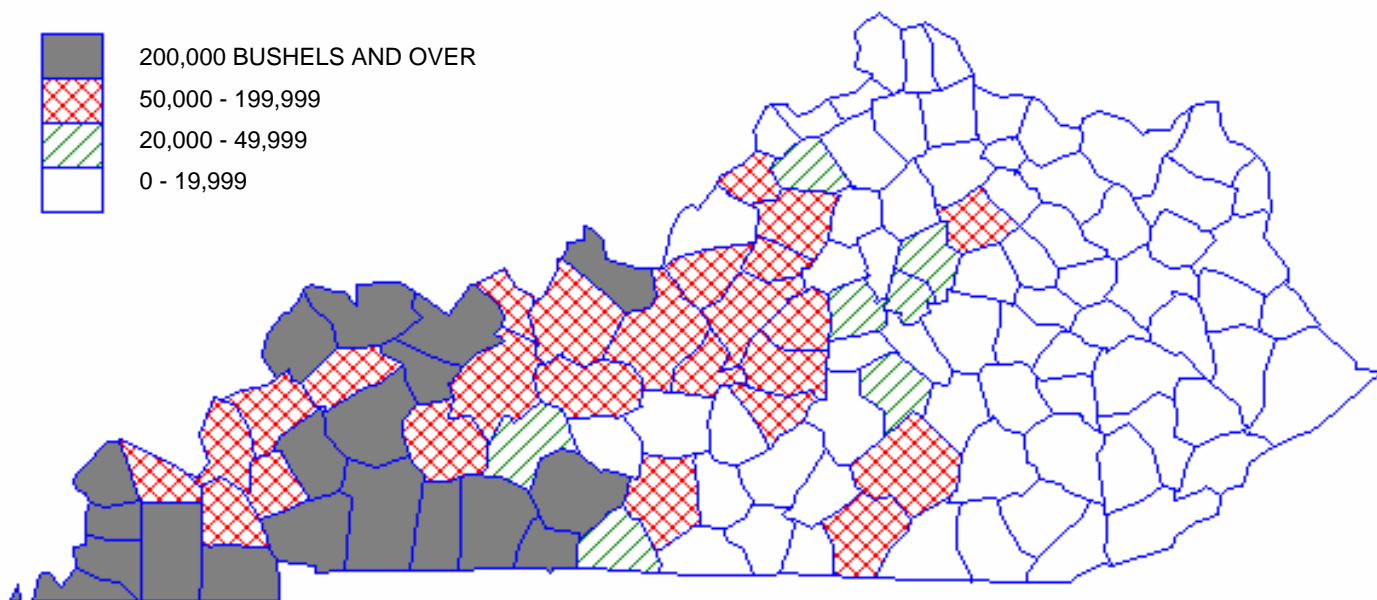
TOP PRODUCING COUNTIES

(Bushels)

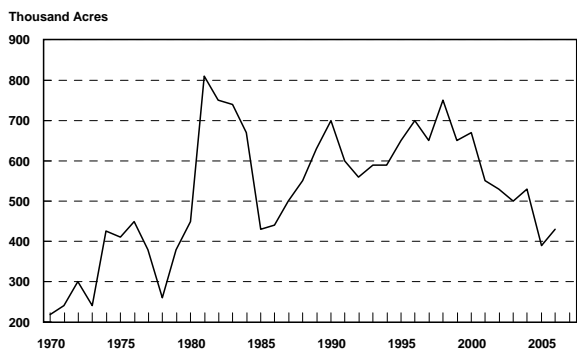
Christian	3,549,000
Logan	2,567,500
Todd	1,978,900
Simpson	1,745,900
Warren	1,062,500

1/Harvested for Grain. 2/Less than 500 acres harvested included in "Other Counties".

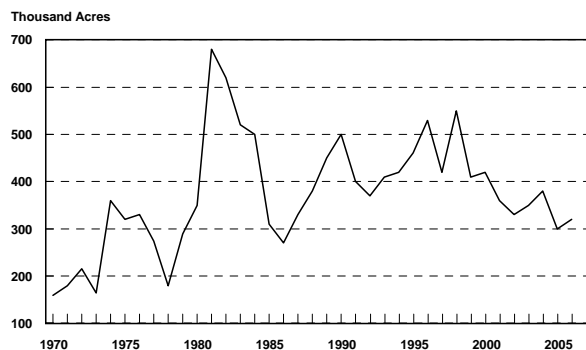
WINTER WHEAT PRODUCTION – 2006



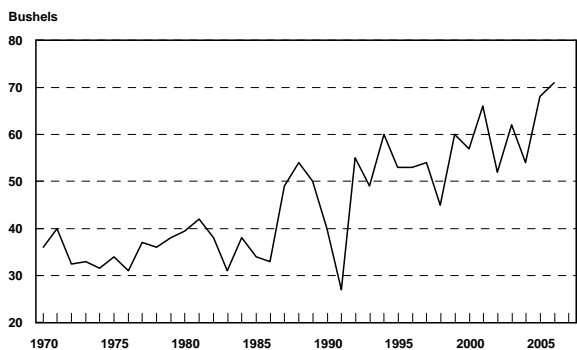
**Kentucky Winter Wheat
All Acres Planted
(1970 - 2006)**



**Kentucky Winter Wheat
Acres Harvested for Grain
(1970 - 2006)**



**Kentucky Winter Wheat
Yield Per Harvested Acre
(1970 - 2006)**



**Kentucky Winter Wheat
Total Grain Production
(1970 - 2006)**

