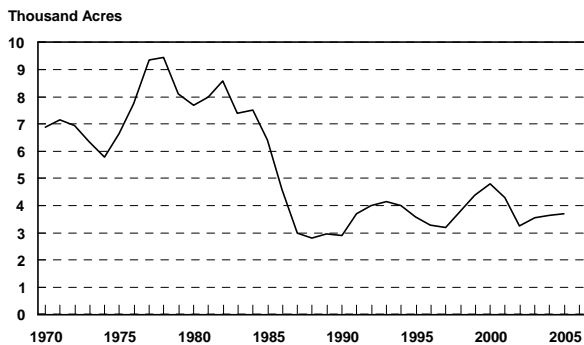


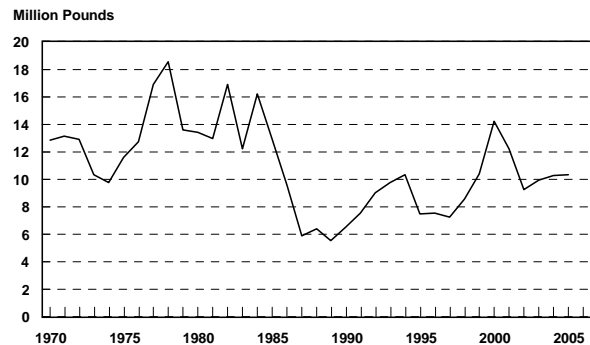
DARK AIR-CURED TOBACCO COUNTY ESTIMATES – 2005

County	Acres Harvested	Yield Per Acre (Lbs)	Production (Lbs)
Calloway	100	3,150	315,000
Carlisle	30	3,035	91,000
Graves	350	3,000	1,050,000
Marshall	70	3,045	213,200
Other Counties	45	2,685	120,800
DISTRICT 1	595	3,010	1,790,000
Caldwell	45	2,660	119,700
Christian	60	2,845	170,700
Daviess	340	2,960	1,006,400
Henderson	220	2,585	568,700
Hopkins	110	2,790	306,900
Logan	1,155	2,735	3,161,100
McLean	230	2,775	638,300
Muhlenberg	55	2,165	119,100
Ohio	45	2,180	98,100
Simpson	230	2,900	667,000
Todd	300	2,900	870,000
Webster	260	2,750	715,000
Other Counties	5	2,500	12,500
DISTRICT 2	3,055	2,765	8,453,500
Butler	35	2,255	79,000
Other Counties	15	2,610	37,500
DISTRICT 3	50	2,330	116,500
STATE TOTAL	3,700	2,800	10,360,000

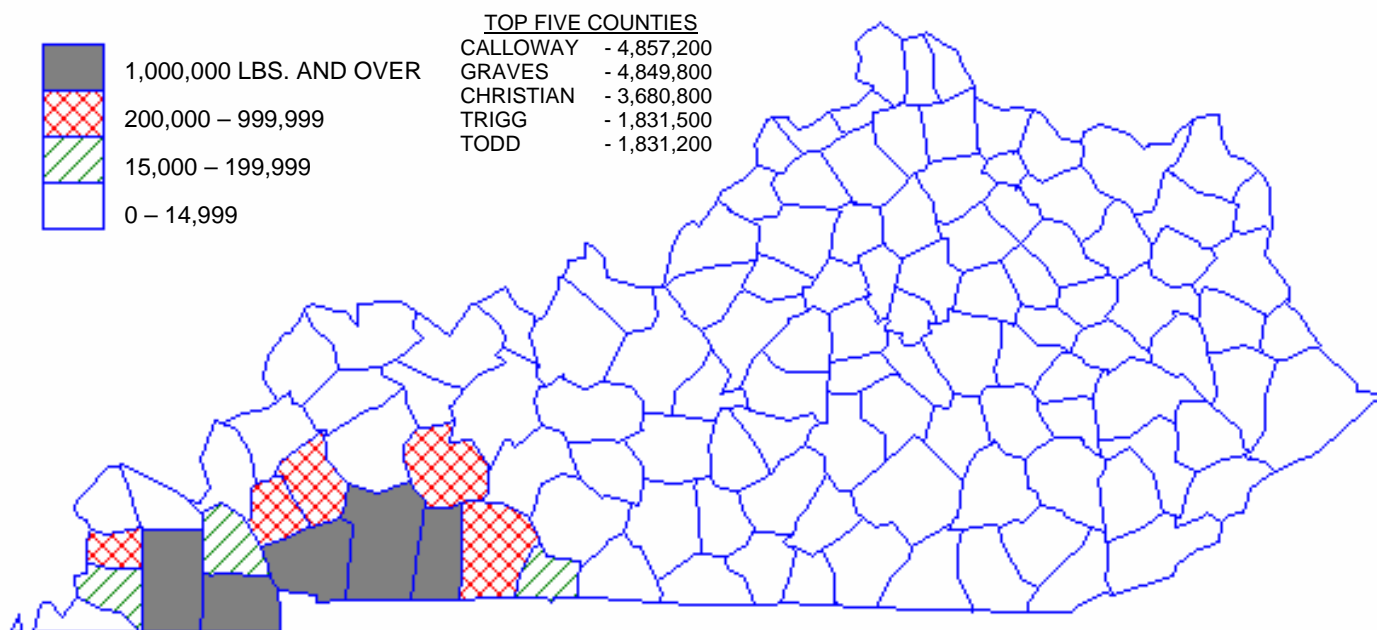
**Kentucky Dark Air-Cured Tobacco
Harvested Acres
(1970 - 2005)**



**Kentucky Dark Air-Cured Tobacco
Production
(1970 - 2005)**



DARK FIRE-CURED TOBACCO PRODUCTION – 2005



DARK AIR-CURED TOBACCO PRODUCTION – 2005

