

PRICES RECEIVED BY FARMERS IN KENTUCKY BY MONTHS, 1993 - 2002

Year	Nov	Dec	Jan <u>1/</u>	Feb <u>1/</u>	Mar <u>1/</u>	Apr <u>1/</u>	May	Jun	Jul	Aug	Sep	Oct	Marketing Year Avg
BURLEY TOBACCO - TYPE 31 (CENTS PER POUND)													
1993	183.5	183.0	182.0	179.0	-	-	-	-	-	-	-	-	182.5
1994	185.5	184.0	183.5	182.0	-	-	-	-	-	-	-	-	184.4
1995	184.5	185.0	187.5	187.5	-	-	-	-	-	-	-	-	185.7
1996	192.5	192.5	192.5	190.0	-	-	-	-	-	-	-	-	192.2
1997	190.5	192.0	188.5	181.0	175.5	170.0	-	-	-	-	-	-	188.6
1998	191.0	191.0	190.0	185.0	162.5	-	-	-	-	-	-	-	190.3
1999	189.5	191.0	190.5	187.5	177.0	-	-	-	-	-	-	-	190.0
2000 <u>2/</u>	197.5	198.5	195.5	193.0	-	-	-	-	-	-	-	-	196.8
2001	198.0	197.5	197.5	196.0	-	-	-	-	-	-	-	-	197.7
2002	198.0	198.5	198.5	194.0	-	-	-	-	-	-	-	-	198.0

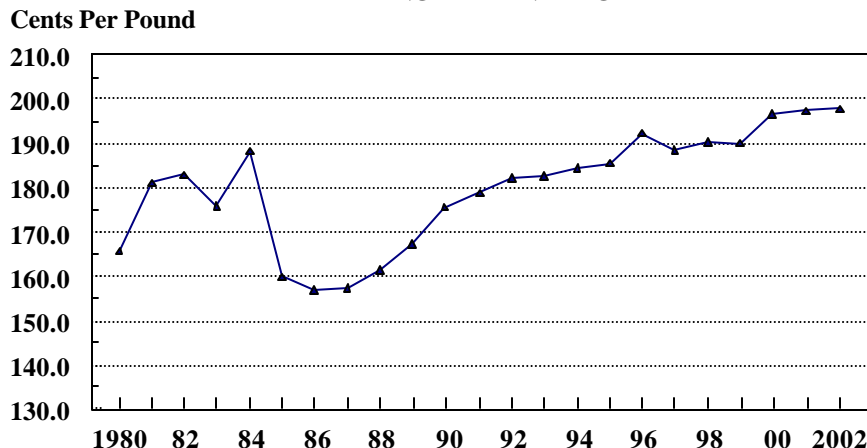
1/Following year. 2/Beginning in 2000 includes contract sales.

PRICES RECEIVED BY FARMERS IN KENTUCKY BY YEAR, 1993 - 2002

Crop Year	Eastern Dark Fire-Cured Tobacco (Type 22)	Western Dark Fire-Cured Tobacco (Type 23)	One Sucker Tobacco (Type 35)	Green River Tobacco (Type 36)
OTHER TOBACCO <u>1/</u> (CENTS PER POUND)				
1993	219.5	218.6	174.5	163.8
1994	211.9	207.5	166.9	173.6
1995	217.8	214.5	177.4	174.5
1996	224.6	223.3	194.5	197.9
1997	226.8	224.2	201.1	203.4
1998	225.9	215.9	195.2	197.4
1999	231.2	226.0	206.6	198.2
2000	220.1	208.2	196.5	194.0
2001	219.5	210.1	183.5	182.2
2002	239.8	236.2	213.5	206.1

1/Marketing Year Average. Prices include country sales.

1980 - 2002 BURLEY TOBACCO PRICES MARKETING YEAR AVERAGE

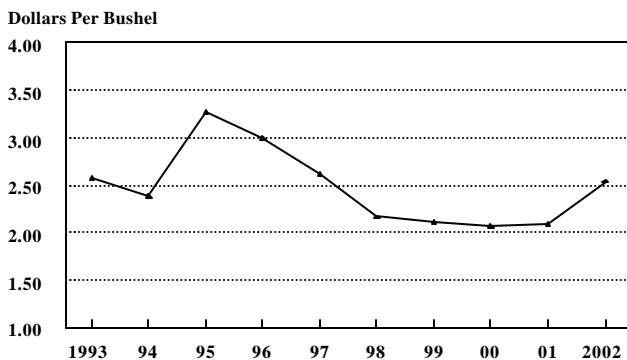


PRICES RECEIVED BY FARMERS IN KENTUCKY BY MONTHS, 1993 - 2003

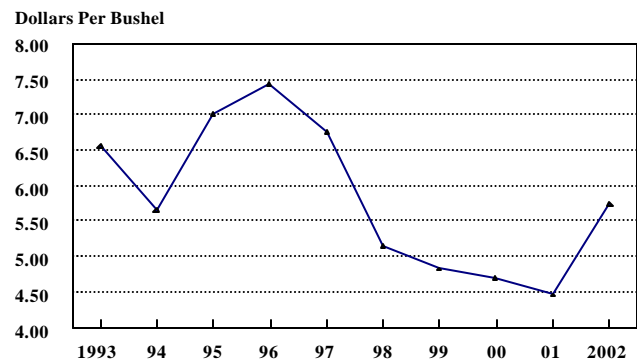
Year	Jan	Feb	Mar	Apr	May	Jun	Jul	Aug	Sep	Oct	Nov	Dec	Marketing Year Avg <u>1/</u>
CORN (DOLLARS PER BUSHEL)													
1993	2.22	2.19	2.29	2.33	2.31	2.36	2.41	2.45	2.32	2.34	2.51	2.74	2.58
1994	2.69	2.89	2.87	2.77	2.69	2.79	2.59	2.26	2.16	2.21	2.16	2.33	2.38
1995	2.44	2.42	2.49	2.54	2.62	2.72	2.82	2.78	2.72	2.91	3.12	3.23	3.27
1996	3.23	3.59	3.98	4.00	4.55	4.67	5.12	4.08	3.36	2.94	2.78	2.79	3.00
1997	3.00	2.85	2.93	3.04	2.94	2.78	2.61	2.67	2.55	2.67	2.68	2.74	2.62
1998	2.76	2.74	2.75	2.58	2.51	2.48	2.34	2.02	1.94	2.15	2.29	2.22	2.17
1999	2.31	2.24	2.29	2.27	2.23	2.21	1.94	1.95	1.97	1.95	1.96	2.22	2.11
2000	2.17	2.23	2.26	2.29	2.35	2.19	1.85	1.95	1.85	1.85	2.00	2.23	2.07
2001 <u>2/</u>	2.18	2.28	2.20	2.08	2.08	2.07	2.12	2.13	2.00	1.90	1.94	2.16	2.08
2002	2.15	2.14	2.10	1.99	2.01	2.14	2.32	2.39	2.55	2.46	2.60	2.56	2.55
2003	2.55	2.73	2.58	2.61	2.80	2.72							
WINTER WHEAT (DOLLARS PER BUSHEL)													
1993	3.54	3.56	3.44	3.48	3.19	2.59	2.70	2.95	2.71	2.83	3.04	3.22	2.83
1994	3.39	3.58	3.42	3.06	3.14	3.12	2.88	3.02	3.46	3.39	3.73	3.77	3.11
1995	3.71	3.55	3.44	3.15	3.31	3.70	3.81	3.99	3.92	4.19	4.41	4.70	3.84
1996	4.21	4.97	4.83	6.13	5.96	4.47	4.31	4.38	4.27	4.06	3.88	3.80	4.33
1997	3.84	3.57	3.73	3.50	3.80	3.32	3.18	3.41	3.45	3.31	3.02	3.28	3.24
1998	3.31	2.97	3.13	2.68	2.83	2.50	2.15	2.06	1.97	2.18	2.28	2.10	2.26
1999	2.51	2.38	2.13	2.03	1.98	2.21	2.08	2.16	2.20	2.00	2.21	2.21	2.19
2000	2.50	2.32	2.66	2.15	2.32	2.34	2.10	2.06	2.04	1.96	2.14	2.31	2.26
2001 <u>2/</u>	2.31	2.58	2.69	2.15	2.40	2.35	2.47	2.58	2.45	2.40	2.58	2.76	2.50
2002	2.75	2.83	2.71	2.58	2.48	2.67	2.94	3.09	3.38	3.42	3.38	3.67	3.00
2003	3.49	3.40	3.14	3.06	3.25	3.12							
SOYBEANS (DOLLARS PER BUSHEL)													
1993	5.74	5.73	5.79	5.89	5.97	6.09	6.69	6.76	6.34	6.11	6.38	6.66	6.55
1994	6.77	6.83	6.89	6.78	6.89	7.02	6.16	5.70	5.52	5.49	5.52	5.64	5.65
1995	5.64	5.73	5.71	5.75	5.82	5.94	6.16	6.09	6.25	6.39	6.66	6.91	7.01
1996	7.03	7.33	7.34	7.75	8.04	7.64	8.02	8.04	7.96	7.06	7.06	7.23	7.43
1997	7.34	7.63	7.96	8.36	8.72	8.35	7.78	7.55	7.02	6.83	7.15	6.94	6.76
1998	6.89	6.78	6.57	6.41	6.38	6.30	6.28	5.66	5.27	5.40	5.63	5.52	5.15
1999	5.48	4.91	4.80	4.73	4.63	4.59	4.22	4.68	4.76	4.63	4.55	4.62	4.83
2000	4.85	5.06	5.16	5.29	5.40	5.12	4.66	4.74	4.81	4.62	4.58	4.94	4.71
2001 <u>2/</u>	4.88	4.67	4.56	4.38	4.47	4.66	5.05	5.02	4.57	4.25	4.23	4.35	4.47
2002	4.45	4.46	4.54	4.69	4.78	5.06	5.62	5.54	5.56	5.56	5.72	5.65	5.75
2003	5.77	5.77	5.83	6.00	6.25	6.16							

1/Marketing year average is the weighted monthly price for the marketing year. Marketing year for Corn & Soybeans is September through August and for Winter Wheat is July through June. 2/Revised.

KENTUCKY CORN PRICES
Marketing Year Average, 1993 - 2002



KENTUCKY SOYBEAN PRICES
Marketing Year Average, 1993 - 2002

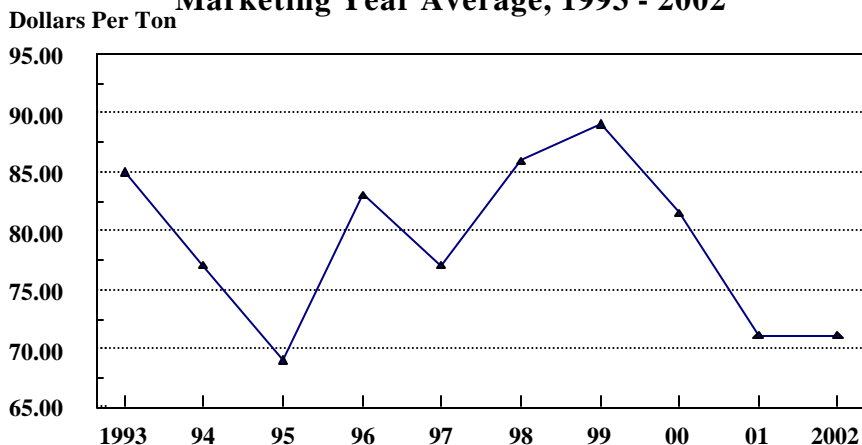


PRICES RECEIVED BY FARMERS IN KENTUCKY BY MONTHS, 1993 - 2003

Year	Jan	Feb	Mar	Apr	May	Jun	Jul	Aug	Sep	Oct	Nov	Dec	Marketing Year Avg ^{1/}
ALFALFA HAY ^{2/}													
(DOLLARS PER TON)													
1993	110.00	114.00	116.00	118.00	118.00	104.00	105.00	106.00	108.00	109.00	110.00	112.00	110.00
1994	117.00	120.00	119.00	115.00	110.00	106.00	105.00	107.00	109.00	112.00	110.00	108.00	108.00
1995	110.00	110.00	102.00	99.00	99.00	95.00	95.00	95.00	96.00	105.00	106.00	95.00	98.00
1996	96.00	103.00	108.00	107.00	104.00	98.00	107.00	118.00	117.00	114.00	112.00	106.00	108.00
1997	104.00	108.00	104.00	98.00	95.00	91.00	91.00	95.00	100.00	110.00	108.00	104.00	99.00
1998	103.00	107.00	107.00	110.00	110.00	105.00	111.00	111.00	107.00	111.00	107.00	107.00	112.00
1999	110.00	125.00	123.00	125.00	119.00	118.00	120.00	120.00	120.00	120.00	123.00	120.00	120.00
2000	120.00	123.00	122.00	117.00	114.00	110.00	100.00	100.00	95.00	110.00	110.00	110.00	109.00
2001 ^{3/}	110.00	125.00	110.00	110.00	100.00	100.00	95.00	90.00	95.00	95.00	105.00	100.00	99.50
2002	110.00	105.00	105.00	95.00	95.00	95.00	100.00	95.00	105.00	100.00	105.00	110.00	100.00
2003	100.00	105.00	105.00	105.00	110.00	110.00							
ALL OTHER HAY ^{2/}													
(DOLLARS PER TON)													
1993	68.00	69.00	71.00	73.00	73.00	67.00	67.00	66.00	68.00	69.00	70.00	70.00	70.50
1994	73.00	76.00	76.00	75.00	72.00	69.00	68.00	69.00	72.00	75.00	72.00	68.00	69.00
1995	69.00	68.00	63.00	61.00	61.00	59.00	58.00	58.00	58.00	65.00	66.00	60.00	61.50
1996	60.00	65.00	67.00	66.00	64.00	66.00	73.00	80.00	77.00	74.00	72.00	68.00	70.50
1997	67.00	69.00	68.00	66.00	63.00	59.00	59.00	62.00	65.00	72.00	71.00	68.00	66.00
1998	67.00	70.00	70.00	72.00	73.00	68.00	72.00	72.00	70.00	72.00	70.00	70.00	73.00
1999	72.00	81.00	80.00	81.00	77.00	77.00	78.00	78.00	78.00	78.00	81.00	78.00	78.00
2000	78.00	80.00	79.00	76.00	74.00	72.00	65.00	65.00	62.00	72.00	72.00	72.00	70.00
2001	72.00	75.00	66.00	64.00	58.00	58.00	55.00	52.00	55.00	55.00	61.00	58.00	58.00
2002	64.00	61.00	61.00	52.00	55.00	55.00	58.00	55.00	61.00	58.00	61.00	64.00	58.50
2003	58.00	61.00	61.00	61.00	64.00	64.00							
ALL HAY ^{2/}													
(DOLLARS PER TON)													
1993	86.00	83.00	83.00	85.00	89.00	77.00	75.00	88.00	79.00	85.00	79.00	91.00	85.00
1994	92.00	89.00	88.00	85.00	94.00	78.00	74.00	82.00	78.00	80.00	75.00	74.00	77.00
1995	78.00	76.00	67.00	71.00	83.00	68.00	64.00	70.00	64.00	71.00	69.00	65.00	69.00
1996	68.00	72.00	72.00	77.00	92.00	78.00	85.00	99.00	91.00	77.00	82.00	76.00	83.00
1997	76.00	83.00	81.00	80.00	86.00	71.00	70.00	78.00	77.00	75.00	81.00	75.00	77.00
1998	76.00	83.00	84.00	88.00	95.00	82.00	86.00	92.00	83.00	75.00	80.00	78.00	86.00
1999	82.00	97.00	96.00	100.00	103.00	89.00	92.00	95.00	88.00	83.00	91.00	88.00	89.00
2000	88.00	90.00	88.00	93.00	92.00	83.00	75.00	81.00	72.00	80.00	80.00	83.00	81.50
2001 ^{3/}	82.00	88.00	78.00	87.00	84.00	70.00	68.00	69.00	67.00	64.00	71.00	70.00	71.00
2002	76.00	72.00	73.00	73.00	73.00	67.00	70.00	73.00	74.00	67.00	71.00	76.00	71.00
2003	69.00	72.00	73.00	83.00	85.00	77.00							

^{1/}Marketing year for Hay is May - April. Marketing year average prices were computed by weighting monthly prices by the estimated percentage of sales made each month. ^{2/}Baled. ^{3/}Revised.

ALL HAY AVERAGE PRICES Marketing Year Average, 1993 - 2002



PRICES RECEIVED BY FARMERS IN KENTUCKY BY MONTHS, 1993 - 2003

Year	Jan	Feb	Mar	Apr	May	Jun	Jul	Aug	Sep	Oct	Nov	Dec	Annual Avg 1/
COWS 2/ (DOLLARS PER CWT.)													
1993	45.00	47.00	46.00	47.00	50.00	50.00	49.00	48.00	46.00	44.00	43.00	43.00	46.20
1994	43.50	44.00	45.00	46.50	46.00	44.00	43.00	42.00	40.00	37.00	36.00	37.00	41.90
1995	37.50	41.00	39.00	39.00	38.00	38.50	36.50	35.50	32.50	31.00	30.00	30.00	35.40
1996	31.00	31.00	31.00	29.50	31.00	31.00	31.00	31.00	29.00	29.00	28.00	27.00	30.60
1997	28.00	33.00	36.00	38.00	39.00	39.00	39.00	36.00	34.00	33.00	32.00	32.00	34.80
1998	35.00	37.00	37.00	38.00	38.00	37.00	36.00	35.00	33.00	30.00	30.00	30.00	34.80
1999	32.00	34.00	35.00	35.00	37.00	36.00	36.00	35.00	33.00	33.00	34.00	35.00	34.80
2000	34.00	36.00	38.00	40.00	41.00	41.00	40.00	39.00	38.00	37.00	37.00	36.00	37.80
2001	38.00	42.00	42.00	44.00	45.00	47.00	44.00	44.00	42.00	37.00	36.00	36.00	40.70
2002	36.00	40.00	41.00	40.00	41.00	41.00	37.00	36.00	33.00	34.00	32.00	33.00	37.00
2003	32.00	36.00	36.00	38.00	41.00	41.00							
STEERS AND HEIFERS 3/ (DOLLARS PER CWT.)													
1993	77.00	78.00	79.00	82.00	82.00	83.00	81.00	80.00	79.00	77.00	75.00	74.00	79.00
1994	75.00	75.00	77.00	76.00	73.00	69.00	70.00	70.00	67.00	62.00	63.00	64.00	70.60
1995	67.00	66.00	63.00	62.00	60.00	60.00	58.00	57.00	55.00	54.00	52.00	52.00	58.90
1996	48.00	49.00	48.50	45.00	46.00	48.00	49.00	50.00	50.00	48.00	49.00	49.00	48.20
1997	57.00	61.00	64.00	66.00	70.00	70.00	73.00	72.00	71.00	67.00	65.00	67.00	66.90
1998	70.00	71.00	72.00	73.00	73.00	70.00	64.00	63.00	60.00	61.00	61.00	61.00	66.60
1999	64.00	67.00	67.00	67.00	67.00	70.00	71.00	71.00	72.00	74.00	74.00	77.00	69.50
2000	80.00	81.00	84.00	85.00	85.00	85.00	86.00	84.00	80.00	80.00	82.00	83.00	82.70
2001	83.00	81.00	84.00	85.00	85.00	88.00	86.00	84.00	82.00	77.00	73.00	76.00	81.60
2002	76.00	77.00	78.00	74.00	74.00	73.00	72.00	72.00	71.00	72.00	72.00	74.00	73.80
2003	74.00	73.00	73.00	76.00	78.00	80.00							
BEEF CATTLE 4/ (DOLLARS PER CWT.)													
1993	69.30	70.60	71.10	73.60	74.30	75.10	73.30	72.30	71.10	69.10	67.30	66.60	71.10
1994	67.40	67.60	69.30	68.90	66.50	63.00	63.50	63.30	60.50	56.00	56.50	57.50	63.70
1995	59.90	60.00	57.20	56.50	54.70	54.80	52.80	51.80	49.60	48.50	46.70	46.70	53.30
1996	43.90	44.70	44.30	41.30	42.40	43.90	44.70	45.40	45.00	43.40	44.00	43.70	43.80
1997	50.00	54.30	57.30	59.30	62.60	62.60	64.80	63.40	62.10	58.80	57.10	58.60	59.20
1998	61.60	63.10	63.60	64.60	64.50	62.10	57.30	56.30	53.30	53.60	53.60	53.60	59.00
1999	56.30	59.10	59.30	59.30	59.80	61.80	62.60	62.40	62.60	64.20	64.40	66.90	59.30
2000	69.00	70.20	73.00	74.20	74.40	74.40	75.00	73.20	69.90	69.40	71.20	71.70	71.90
2001	72.20	71.60	73.90	75.20	75.40	78.20	75.90	74.40	72.40	67.40	64.10	66.40	71.70
2002	66.40	68.10	69.10	65.80	66.10	65.30	63.60	63.40	61.90	62.90	62.40	64.20	64.90
2003	63.90	64.10	64.10	66.90	69.10	70.60							
CALVES 5/ (DOLLARS PER CWT.)													
1993	83.00	85.00	89.00	93.00	93.50	94.00	90.00	90.00	87.00	84.00	81.00	81.00	87.80
1994	83.00	85.00	91.00	89.00	83.00	78.00	77.00	78.00	74.00	69.00	70.00	71.00	79.40
1995	75.00	75.00	73.00	71.00	68.00	67.00	64.00	59.00	56.00	54.00	50.00	50.00	63.70
1996	46.00	48.00	49.00	45.00	46.00	46.50	45.00	48.00	47.00	45.00	46.00	46.00	46.50
1997	56.00	64.00	71.00	75.00	78.00	78.00	81.00	77.00	75.00	70.00	69.00	73.00	72.20
1998	77.00	80.00	84.00	87.00	83.00	77.00	69.00	70.00	65.00	66.00	66.00	68.00	74.90
1999	75.00	78.00	79.00	79.00	78.00	79.00	79.00	79.00	81.00	81.00	81.00	87.00	80.20
2000	93.00	94.00	100.00	102.00	99.00	97.00	102.00	97.00	92.00	92.00	94.00	94.00	96.10
2001	98.00	99.00	103.00	102.00	99.00	102.00	99.00	96.00	95.00	88.00	84.00	90.00	96.20
2002	92.00	95.00	95.00	89.00	88.00	83.00	80.00	80.00	79.00	80.00	80.00	82.00	84.90
2003	84.00	86.00	86.00	90.00	91.00	91.00							

1/Annual average prices were computed by weighting monthly prices by the estimated percentage of sales made each month. 2/Beef cows and cull dairy cows sold for slaughter. 3/500 lbs. and over. 4/"Steers and heifers" and "cows" combined. 5/Under 500 lbs.

PRICES RECEIVED BY FARMERS IN KENTUCKY BY MONTHS, 1993 - 2003

Year	Jan	Feb	Mar	Apr	May	Jun	Jul	Aug	Sep	Oct	Nov	Dec	Annual Avg 1/
MILK COWS (DOLLARS PER HEAD)													
1993	980	-	-	990	-	-	1,020	-	-	1,030	-	-	1,010
1994	1,030	-	-	1,020	-	-	1,030	-	-	1,040	-	-	1,030
1995	1,030	-	-	1,050	-	-	1,040	-	-	1,020	-	-	1,040
1996	1,000	-	-	990	-	-	990	-	-	1,000	-	-	1,000
1997	1,000	-	-	1,050	-	-	1,040	-	-	1,020	-	-	1,030
1998	1,000	-	-	1,000	-	-	1,040	-	-	1,090	-	-	1,030
1999	1,140	-	-	1,170	-	-	1,180	-	-	1,290	-	-	1,200
2000	1,240	-	-	1,250	-	-	1,310	-	-	1,310	-	-	1,280
2001	1,320	-	-	1,340	-	-	1,540	-	-	1,650	-	-	1,460
2002	1,540	-	-	1,650	-	-	1,580	-	-	1,450	-	-	1,550
2003	1,350	-	-	1,330	-	-	-	-	-	-	-	-	-
MILK-FLUID MARKET 2/ (DOLLARS PER CWT.)													
1993	13.40	13.10	12.80	12.70	13.10	14.00	14.40	13.60	13.20	13.40	14.20	14.40	13.50
1994	14.70	14.40	14.30	14.30	14.40	14.50	13.10	13.20	13.60	13.80	14.00	13.90	14.00
1995	13.60	13.40	13.30	13.30	13.50	13.00	12.90	13.40	13.30	13.80	14.40	14.50	13.50
1996	14.90	14.80	14.60	14.40	14.60	15.10	15.70	16.00	16.50	17.00	17.10	15.60	15.50
1997	13.70	13.50	13.90	14.10	14.10	13.30	12.60	12.70	13.00	14.20	15.00	15.00	13.80
1998	15.00	15.40	15.20	14.80	14.40	14.10	12.90	15.10	16.80	17.40	17.50	18.20	15.50
1999	18.80	18.50	17.70	12.20	13.20	13.60	13.30	13.50	15.80	17.50	17.90	13.30	15.40
2000	13.10	13.00	13.00	13.10	13.60	13.90	14.40	14.30	14.30	14.10	14.60	14.70	13.80
2001	14.90	14.40	15.10	15.70	16.70	17.30	17.60	18.00	18.10	16.70	16.60	14.10	16.20
2002	14.30	13.90	13.50	13.40	13.00	12.80	12.80	12.80	12.70	12.90	13.00	12.90	13.20
2003	12.80	12.40	12.00	11.90	12.10	12.00	-	-	-	-	-	-	-
MILK-MANUFACTURING GRADE (DOLLARS PER CWT.)													
1993	10.20	10.10	10.30	11.00	11.10	10.80	10.60	10.60	11.30	11.50	11.80	11.60	10.90
1994	11.50	10.80	11.70	11.60	10.90	10.90	10.80	11.40	11.70	12.00	11.70	11.20	11.30
1995	10.90	11.30	11.30	10.70	10.70	10.70	10.60	10.70	11.10	11.50	11.50	11.20	11.00
1996	11.10	11.80	11.60	11.40	12.60	12.60	13.30	13.70	14.50	13.80	11.20	10.70	12.50
1997	11.30	11.30	11.60	10.50	9.80	9.80	10.00	11.20	12.00	12.50	12.80	12.80	11.20
1998	12.70	12.70	12.10	11.50	10.50	12.40	12.90	14.20	14.80	15.60	15.40	16.00	13.20
1999	15.10	9.80	10.90	10.90	10.20	10.40	12.10	13.60	14.30	10.90	9.80	9.40	11.50
2000	10.10	9.50	9.00	8.80	8.80	8.90	10.00	9.90	10.50	10.10	9.20	9.50	9.50
2001	9.60	9.40	10.30	10.80	12.10	13.10	13.30	13.50	13.80	12.90	11.80	11.50	11.90
2002 3/	11.60	11.40	10.50	-	-	-	-	-	-	-	-	-	-
MILK-WHOLESALE, ALL (DOLLARS PER CWT.)													
1993	13.30	12.90	12.70	12.60	13.00	13.80	14.20	13.50	13.20	13.30	14.10	14.30	13.40
1994	14.60	14.20	14.20	14.10	14.20	14.40	13.00	13.20	13.50	13.70	13.90	13.80	13.90
1995	13.50	13.30	13.20	13.20	13.50	13.00	12.80	13.30	13.30	13.70	14.30	14.40	13.50
1996	14.90	14.80	14.60	14.30	14.60	15.00	15.70	15.90	16.50	17.00	17.00	15.50	15.40
1997	13.70	13.40	13.90	14.00	14.00	13.20	12.50	12.60	13.00	14.20	15.00	15.00	13.70
1998	15.00	15.30	15.10	14.70	14.30	14.10	12.90	15.10	16.80	17.40	17.50	18.20	15.50
1999	18.70	18.40	17.60	12.20	13.10	13.60	13.30	13.50	15.70	17.40	17.80	13.30	15.40
2000	13.10	13.00	13.00	13.10	13.60	13.90	14.40	14.30	14.30	14.10	14.50	14.60	13.80
2001	14.80	14.40	15.10	15.70	16.70	17.30	17.60	18.00	18.10	16.70	16.60	14.10	16.20
2002	14.30	13.90	13.50	13.40	13.00	12.80	12.80	12.80	12.70	12.90	13.00	12.90	13.20
2003	12.80	12.40	12.00	11.90	12.10	12.00	-	-	-	-	-	-	-

1/Calendar year average. 2/Includes surplus diverted to manufacturing. 3/No longer published after March 2002.

PRICES RECEIVED BY FARMERS IN KENTUCKY BY MONTHS, 1993 - 2003

Year	Dec <u>1/</u>	Jan	Feb	Mar	Apr	May	Jun	Jul	Aug	Sep	Oct	Nov	Marketing Year Avg. <u>1/</u>
BARROWS AND GILTS (DOLLARS PER CWT.)													
1993	41.50	41.30	44.00	46.50	45.00	46.00	47.00	45.00	46.00	48.00	46.50	42.00	44.80
1994	40.00	42.00	47.00	44.00	42.00	42.00	42.50	42.00	41.50	35.00	31.00	27.00	39.50
1995	31.00	37.00	38.50	37.50	35.00	36.00	42.00	46.00	49.00	47.00	45.00	40.50	39.80
1996	43.00	42.50	47.00	49.00	51.00	57.00	57.00	58.00	58.00	54.00	55.00	54.00	51.90
1997	55.00	53.00	52.00	49.00	54.00	58.00	57.00	60.00	56.00	53.00	48.00	46.00	53.00
1998	41.00	34.00	37.00	36.00	36.00	45.00	45.00	39.00	36.00	31.00	28.00	20.00	35.70
1999	18.00	25.00	26.00	25.00	28.00	34.00	33.00	29.00	35.00	31.00	32.00	32.00	28.80
2000	34.00	35.00	38.00	40.00	46.00	46.00	46.00	46.00	40.00	39.00	39.00	34.00	40.40
2001	38.00	34.00	37.00	44.00	44.00	48.00	50.00	50.00	49.00	43.00	38.00	34.00	42.30
2002	33.00	38.00	38.00	35.00	30.00	31.00	34.00	36.00	28.00	24.00	29.00	28.00	31.40
2003	30.00	32.00	33.00	34.00	35.00	41.00	46.00						
SOWS (DOLLARS PER CWT.)													
1993	31.80	31.00	34.50	39.00	39.00	39.00	38.00	35.00	35.00	36.00	36.00	35.00	35.70
1994	31.00	33.00	36.00	38.00	38.00	37.00	33.00	30.00	30.00	28.00	25.00	20.00	31.50
1995	20.00	25.00	30.00	32.00	30.00	29.00	29.00	29.00	35.00	36.00	38.00	32.00	30.00
1996	32.00	32.00	33.00	34.00	36.00	41.00	43.00	46.00	48.00	46.00	48.00	49.00	40.50
1997	47.00	45.00	46.00	45.00	45.00	47.00	46.00	45.00	43.00	40.00	38.00	36.00	43.30
1998	35.00	26.00	27.00	27.00	27.00	28.00	28.00	26.00	22.00	18.00	20.00	16.00	24.70
1999	13.00	19.00	18.00	21.00	24.00	30.00	30.00	20.00	23.00	22.00	24.00	24.00	22.20
2000	24.00	33.00	38.00	34.00	38.00	41.00	36.00	35.00	35.00	35.00	34.00	29.00	34.20
2001	30.00	31.00	31.00	34.00	40.00	39.00	41.00	40.00	39.00	34.00	32.00	29.00	35.00
2002	24.00	25.00	27.00	30.00	24.00	23.00	21.00	18.00	18.00	16.00	20.00	21.00	22.30
2003	22.00	22.00	23.00	24.00	27.00	28.00	30.00						
HOGS <u>2/</u> (DOLLARS PER CWT.)													
1993	41.10	40.90	43.60	46.20	44.80	45.70	46.60	44.60	45.60	47.50	46.10	41.70	44.40
1994	39.60	41.60	46.60	43.80	41.80	41.80	42.10	41.50	41.00	34.70	30.80	26.70	39.20
1995	30.60	36.50	38.20	37.30	34.80	35.70	41.50	45.30	48.40	46.60	44.70	40.20	39.40
1996	42.60	42.10	46.40	48.40	50.40	56.40	56.40	57.50	57.60	53.70	54.70	53.80	51.40
1997	54.70	52.70	51.80	48.80	53.60	57.60	56.60	59.40	55.50	52.50	47.60	45.60	52.60
1998	40.80	33.70	36.60	35.60	35.60	44.30	44.30	38.50	35.40	30.50	27.70	19.80	35.20
1999	17.80	24.80	25.70	24.80	27.80	33.80	32.90	28.60	34.50	30.60	31.70	31.70	28.50
2000	33.60	34.90	38.00	39.80	45.70	45.80	45.60	45.60	39.80	38.80	38.80	33.80	40.20
2001	37.70	33.90	36.80	43.60	43.80	47.60	49.60	49.60	48.60	42.60	37.80	33.80	42.00
2002	32.60	37.50	37.60	34.80	29.80	30.70	33.50	35.30	27.60	23.70	28.60	27.70	31.00
2003	29.70	31.60	32.60	33.60	34.70	40.50	45.40						

1/Marketing year is December preceding year through November. Prices computed by weighting monthly prices by estimated percentage of sales made each month. 2/"Barrows and gilts" and "sows" combined.

KENTUCKY HOG PRICES Marketing Year Average, 1993 - 2002

