

DARK FIRE-CURED TOBACCO COUNTY ESTIMATES - 2001 ^{1/}

EASTERN DARK, TYPE 22

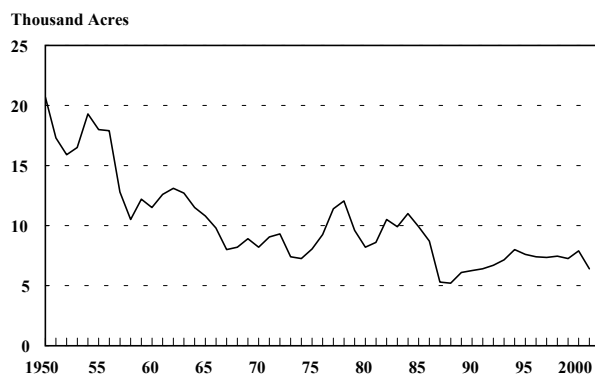
County	Acres Harvested	Yield Per Acre (Lbs)	Production (Lbs)
Caldwell	215	3,465	745,000
Christian	1,090	3,565	3,886,000
Logan	240	3,095	743,000
Lyon	195	2,940	573,000
Muhlenberg	290	3,120	905,000
Simpson	29	3,450	100,000
Todd	605	3,365	2,036,000
Trigg	635	3,510	2,229,000
Other Counties	1	3,000	3,000
STATE TOTAL	3,300	3,400	11,220,000

WESTERN DARK, TYPE 23

County	Acres Harvested	Yield Per Acre (Lbs)	Production (Lbs)
Ballard	12	2,585	31,000
Calloway	1,320	3,560	4,700,000
Carlisle	115	3,775	434,000
Graves	1,430	3,405	4,866,000
Hickman	42	2,950	124,000
McCracken	56	2,730	153,000
Marshall	125	3,345	418,000
STATE TOTAL	3,100	3,460	10,726,000

^{1/}Preliminary.

**Kentucky Dark Fire-Cured Tobacco
Harvested Acres
(1950-2001)**



**Kentucky Dark Fire-Cured Tobacco
Production
(1950-2001)**

