



Iowa Ag News – Crop Production

Iowa Field Office · 210 Walnut Street Ste 833 · Des Moines IA 50309 · (515) 776-3400 · (800) 772-0825
fax (855) 271-9802 · www.nass.usda.gov/ia

Cooperating with the Iowa Department of Agriculture and Land Stewardship

November 9, 2022

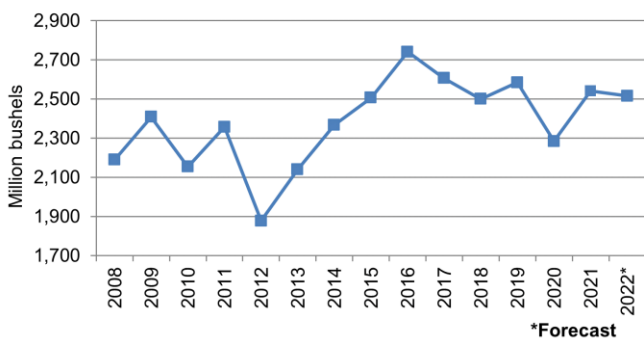
Media Contact: Greg Thessen

Iowa **corn** production is forecast at 2.51 billion bushels according to the latest USDA, National Agricultural Statistics Service – *Crop Production* report. Based on conditions as of November 1, yields are expected to average 202.0 bushels per acre, up 2.0 bushels per acre from the October 1 forecast but down 2.0 bushels per acre from last year. Corn planted acreage is estimated at 12.9 million acres, with an estimated 12.5 million acres to be harvested for grain.

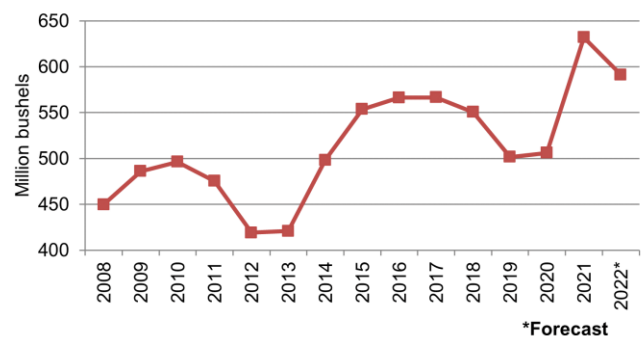
Soybean production is forecast at 591 million bushels. The yield is forecast at 59.0 bushels per acre, up 1.0 bushel per acre from the October forecast but down 4.0 bushels per acre from 2021. Soybean planted acreage is estimated at 10.1 million acres with 10.0 million acres to be harvested.

The forecasts in this report are based on November 1 conditions and do not reflect weather effects since that time. The next corn and soybean production estimates will be published in the *Crop Production – Annual Summary* report which will be released January 12, 2023.

Corn Production – Iowa: 2008-2022



Soybean Production – Iowa: 2008-2022



Area Harvested, Yield, and Production Summary – Iowa and United States: 2021 and Forecasted November 1, 2022

Crop	Area harvested		Yield per acre		Production	
	2021	2022	2021	2022	2021	2022
	(1,000 acres)	(1,000 acres)			(1,000)	(1,000)
IOWA						
Corn	12,450	12,450	204.0	202.0	2,539,800	2,514,900
Soybeans	10,030	10,020	63.0	59.0	631,890	591,180
UNITED STATES						
Corn	85,318	80,844	176.7	172.3	15,073,820	13,929,921
Soybeans	86,312	86,631	51.7	50.2	4,465,382	4,345,524

U.S. Corn Supply and Use ¹

CORN	2020-2021	2021-2022 (Est.)	2022-2023 Projections November
	(million bushels)	(million bushels)	(million bushels)
Beginning stocks	1,919	1,235	1,377
Production	14,111	15,074	13,930
Imports	24	24	50
Supply, total	16,055	16,333	15,357
Feed & residual	5,607	5,717	5,300
Food, seed & industrial ..	6,467	6,767	6,725
Ethanol & by-products ...	5,028	5,326	5,275
Domestic, total	12,074	12,484	12,025
Exports	2,747	2,471	2,150
Use, total	14,821	14,956	14,175
Ending stocks	1,235	1,377	1,182
Avg. farm price (\$/bu) ...	4.53	6.00	6.80

¹ Source: USDA OCE World Agricultural Supply and Demand Estimates Report
<http://www.usda.gov/oce/commodity/wasde/index.htm>

U.S. Soybean Supply and Use ¹

SOYBEANS	2020-2021	2021-2022 (Est.)	2022-2023 Projections November
	(million bushels)	(million bushels)	(million bushels)
Beginning stocks	525	257	274
Production	4,216	4,465	4,346
Imports	20	16	15
Supply, total	4,761	4,738	4,634
Crushings	2,141	2,204	2,245
Exports	2,266	2,158	2,045
Seed	101	102	102
Residual	-4	2	22
Use, total	4,504	4,465	4,414
Ending stocks	257	274	220
Avg. farm price (\$/bu) ...	10.80	13.30	14.00

¹ Source: USDA OCE World Agricultural Supply and Demand Estimates Report
<http://www.usda.gov/oce/commodity/wasde/index.htm>

United States Summary

Corn production for grain is forecast at 13.9 billion bushels, up less than 1 percent from the previous forecast but down 8 percent from 2021. Based on conditions as of November 1, yields are expected to average 172.3 bushels per harvested acre, up 0.4 bushel from the previous forecast but down 4.4 bushels from last year. Area harvested for grain, forecast at 80.8 million acres, is unchanged from the previous forecast but down 5 percent from the previous year.

Soybean production for beans is forecast at 4.35 billion bushels, up 1 percent from the previous forecast but down 3 percent from last year. Based on conditions as of November 1, yields are expected to average 50.2 bushels per harvested acre, up 0.4 bushel from the previous forecast but down 1.5 bushels from 2021. Area harvested for beans in the United States is forecast at 86.6 million acres, unchanged from the previous forecast but up less than 1 percent from 2021.