



Illinois Crop Progress and Condition

Released May 19, 2025

There were 5.8 days suitable for fieldwork in the week ending May 18, 2025. Statewide, the average temperature was 67.4 degrees, 4.6 degrees above normal. Precipitation averaged 0.39 inches, 0.80 inches below normal. Topsoil moisture supply was rated 5 percent very short, 26 percent short, 51 percent adequate, and 18 percent surplus. Subsoil moisture supply was rated 5 percent very short, 23 percent short, 54 percent adequate, and 18 percent surplus. Corn planted reached 74 percent, compared to the 5-year average of 77 percent. Corn emerged reached 54 percent, compared to the 5-year average of 48 percent. Soybeans planted reached 67 percent, compared to the 5-year average of 64 percent. Soybeans emerged reached 45 percent, compared to the 5-year average of 33 percent. Winter wheat headed reached 63 percent, compared to the 5-year average of 77 percent. Winter wheat condition was rated 5 percent poor, 35 percent fair, 49 percent good, and 11 percent excellent.

Days Suitable for Fieldwork and Soil Moisture Supply: Week Ending May 18, 2025

State	Days Suitable for Fieldwork	Topsoil Moisture Supply				Subsoil Moisture Supply			
		Very Short	Short	Adequate	Surplus	Very Short	Short	Adequate	Surplus
		(percent)	(percent)	(percent)	(percent)	(percent)	(percent)	(percent)	(percent)
Illinois	5.8	5	26	51	18	5	23	54	18

Crop Progress – Illinois

Item	Week ending			2020-2024 Average
	May 18, 2025	May 11, 2025	May 18, 2024	
	(percent)	(percent)	(percent)	(percent)
Corn planted	74	54	63	77
Corn emerged	54	25	46	48
Soybeans planted	67	51	55	64
Soybeans emerged	45	22	29	33
Winter wheat headed	63	46	89	77
Alfalfa hay 1st cutting	33	5	17	14
Other hay cut	22	3	9	12

Winter Wheat Condition – Illinois

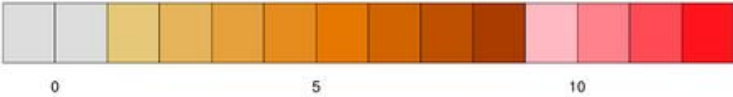
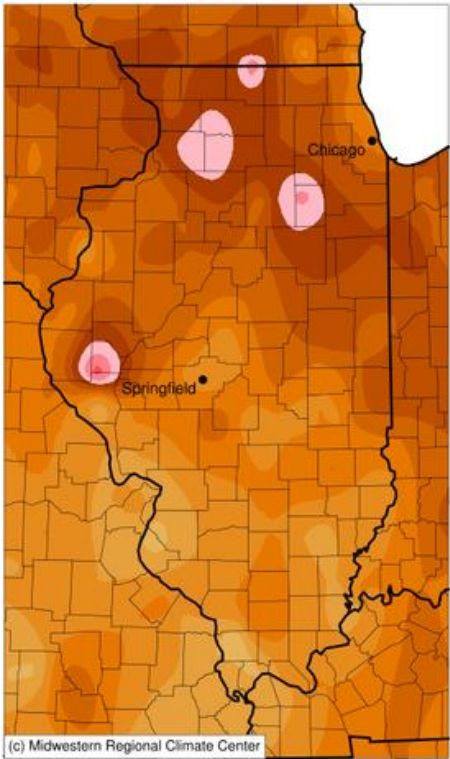
Date	Very Poor	Poor	Fair	Good	Excellent
	(percent)	(percent)	(percent)	(percent)	(percent)
May 18, 2025	-	5	35	49	11
May 11, 2025	1	5	34	49	11
May 18, 2024	5	7	18	49	21

- Represents zero.

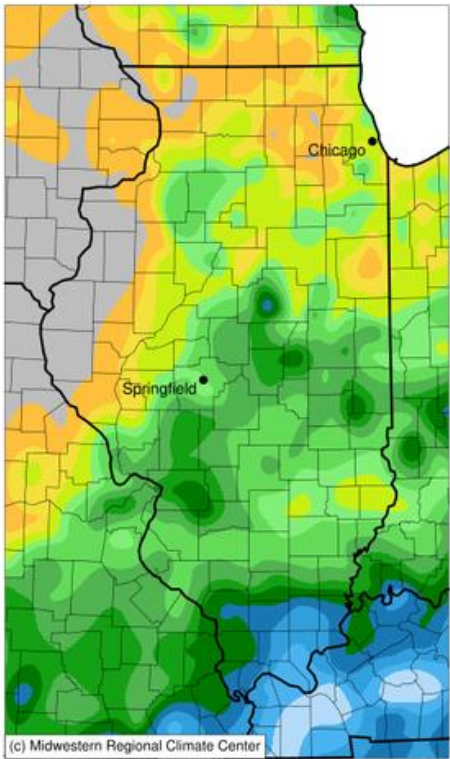
Pasture Condition – Illinois

Date	Very Poor	Poor	Fair	Good	Excellent
	(percent)	(percent)	(percent)	(percent)	(percent)
May 18, 2025	2	5	27	43	23
May 11, 2025	1	4	24	47	24
May 18, 2024	2	3	10	50	35

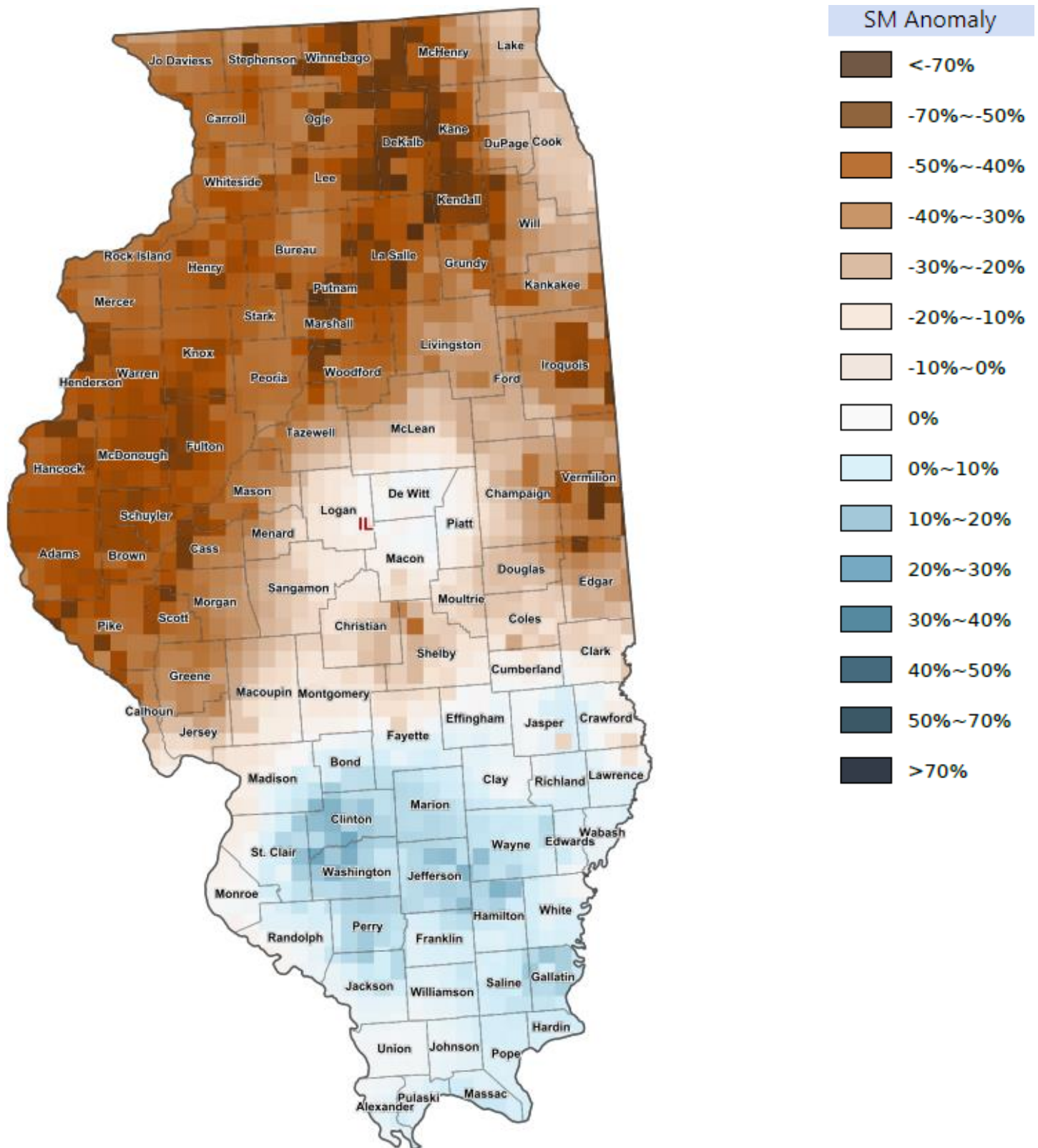
Average Temperature (°F): Departure from 1991-2020 Normals
May 12, 2025 to May 18, 2025



Accumulated Precipitation (in)
May 12, 2025 to May 18, 2025



Soil Moisture Deviation from Historical Average – May 16, 2025



<https://cloud.csiss.gmu.edu/Crop-CASMA/>
(historical average includes 2015 to current)

Access to NASS Reports

For your convenience, you may access NASS reports and products the following ways:

- All data are available electronically, at no cost, on the NASS web site: <http://www.nass.usda.gov>
- Follow us on X @usda_nass

For more information on NASS surveys and reports, call the Heartland Regional Field Office at (314) 595-9594 or e-mail: nassrfohlr@usda.gov.