

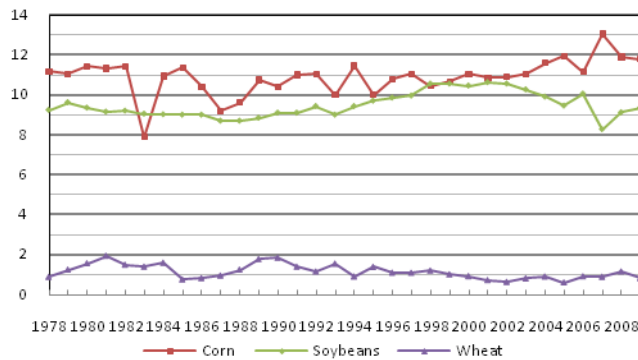
CROPS

Planting of 12.0 million acres of corn in 2009 got off to a slow start due to spring rains that delayed planting, with many farmers not finishing planting corn until mid-June. Cooler than normal temperatures, along with extra moisture, slowed crop development to a crawl through the summer. Abundant rainfall throughout October halted most field activities, pushing harvest well into December. The value of the 2009 corn crop was 7.49 billion dollars, 12 percent less than the previous year.

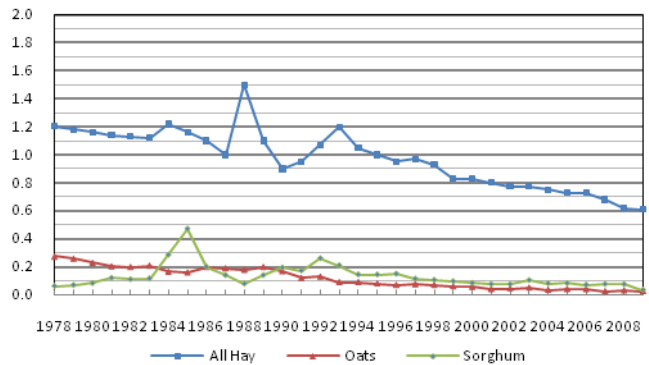
Soybean planting also got off to a slow start due to the wet spring. Planting of 9.4 million acres was delayed to where the majority of the soybeans were planted in June. Soybeans were generally in good condition through the summer, although two to three weeks behind normal progress levels. The second wettest October on record for Illinois led to the second latest harvest on record as of November 1. Only 35 percent of the state's soybean crop had been harvested by November 1. The value of the 2009 soybean crop was 4.17 billion dollars, 5 percent below the 2008 crop.

Winter wheat acreage for 2009 totaled 850 thousand acres seeded, 29 percent less than the previous year. The value of the wheat crop was 59 percent below the previous year at 177 million dollars. Acreage seeded to oats in 2009 was 40 thousand, down 11 percent from 2008. The oat crop was valued at 4.55 million dollars, down 29 percent from 2008. Acreage planted to sorghum in 2009 was 40 thousand, down 50 percent from 2008. Sorghum value was 53 percent below 2008, falling to 10.9 million dollars. Harvested acreage of hay in 2009 was 610 thousand, 2 percent less than 2008. The hay crop was valued at 223.8 million dollars.

PRINCIPAL CROPS
Illinois Harvested Acres (Millions)



OTHER CROPS
Illinois Harvested Acres (Millions)



CROPS: Record highs through 2009, Illinois

Crops	Unit	Date series began	Acres harvested		Yield per acre		Production	
			Year	Acres Thousands	Year	Yield	Year	Production Thousands
Corn for grain	Bushels	1866	2007	13,050	2004	180	2007	2,283,750
Soybeans	Bushels	1919	2001	10,620	2004	50	2004	495,000
Sorghum for grain	Bushels	1931	1985	470	2004	109	1985	36,190
Wheat	Bushels	1866	1919	4,103	2006	67	1989	105,020
Oats	Bushels	1866	1925	4,855	2003	89	1917	207,000
All hay	Tons	1866	1940	3,523	1990	3.72	1956	5,065