

HAWAII PAPAYAS



National Agricultural Statistics Service

Hawaii Agricultural Statistics Service
Hawaii Department of Agriculture
1428 S King Street, Honolulu, HI 96814-2512
(808) 973-9588
FAX (808) 973-2909
Internet Web Site <http://www.nass.usda.gov/hi>

Frequency: Monthly
Release: April 12, 2004

MARCH FRESH UTILIZATION CONTINUES DECLINE

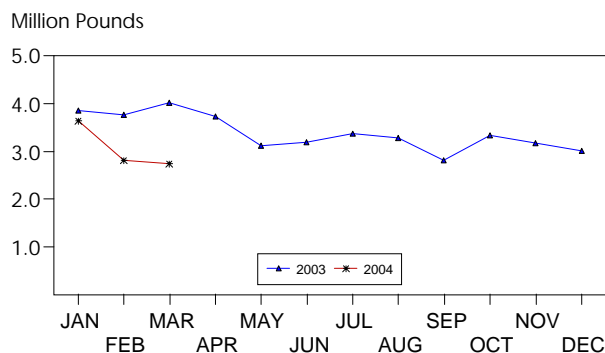
Hawaii fresh papaya utilization is estimated at 2.8 million pounds for March 2004, 2 percent less than February, and 35 percent lower than a year ago.

Area in crop totaled 2,110 acres, 5 percent lower than December 2003, and 7 percent less than a year ago. Harvested area totaled 1,165 acres, 13 percent lower than December 2003, and 23 percent less than a year ago.

Weather conditions over the major producing areas were mostly wet during the month of March. Soil moisture has been ample in non-irrigated orchards. The abundant rainfall throughout the month increased humidity levels resulting in favorable conditions for diseases such as Black spot and Phytophthora. These diseases adversely affect papaya leaves and roots which reduces production over time.

Papaya growers are expected to receive an estimated 39.0 cents per pound for fresh fruit in March, 26 percent (8.0 cents) more than last month but 11 percent (4.0 cents) higher than a year ago.

FRESH PAPAYA UTILIZATION STATE OF HAWAII, 2003-2004¹



¹ 2003-2004 Preliminary.

HASS

FRESH PAPAYA UTILIZATION, STATE OF HAWAII, MONTH OF: March 2004

Island	Sales				Year ago	Year-to-date	
	Local ¹	Intrastate	Out-of-State	Total fresh		2003	2004
	<i>1,000 pounds</i>						
Hawaii.....	116	1,284	1,050	2,450	3,800	10,630	8,205
Kauai.....	45	0	0	45	50	160	110
Maui/Molokai/Oahu ²	232	3	20	255	365	1,095	885
State.....	393	1,287	1,070	2,750	4,215	11,885	9,200

¹ On island of production.

² Combined to avoid disclosure of individual operations.

DONALD A. MARTIN
State Agricultural Statistician

ARTHUR Y. OSAKI
Research Statistician

SANDY K. NAKASONE
Statistical Assistant

PAPAYA ACREAGE, STATE OF HAWAII, 2004 WITH COMPARISONS

Island	Total acreage in crop							
	March		June		September		December	
	2003	2004	2003	2004	2003	2004	2003	2004
Hawaii.....	2,015	1,900	1,925		2,165		2,000	
Kauai.....	60	50	65		95		50	
Maui/Molokai/Oahu.....	185	160	180		105		160	
State.....	2,260	2,110	2,170		2,365		2,210	
	Total bearing acres							
Hawaii.....	1,385	1,000	1,440		1,430		1,200	
Kauai.....	40	40	40		80		35	
Maui/Molokai/Oahu.....	90	125	95		55		110	
State.....	1,515	1,165	1,575		1,565		1,345	

FRESH PAPAYA FARM PRICE, STATE OF HAWAII, 2003-2004

Year	Jan.	Feb.	Mar.	Apr.	May	June	July	Aug.	Sep.	Oct.	Nov.	Dec.	Average
	<i>Cents per pound</i>												
2003 ¹	28.0	32.0	35.0	36.0	38.0	38.0	35.0	32.0	34.0	31.0	29.0	29.0	
2004 ¹	30.0	31.0	39.0										

¹Preliminary.