

HAWAII PAPAYAS



National Agricultural Statistics Service

Hawaii Agricultural Statistics Service
Hawaii Department of Agriculture
1428 S King Street, Honolulu, HI 96814-2512
(808) 973-9588
FAX (808) 973-2909
Internet Web Site <http://www.nass.usda.gov/hi>

Frequency: Monthly
Release: April 10, 2003

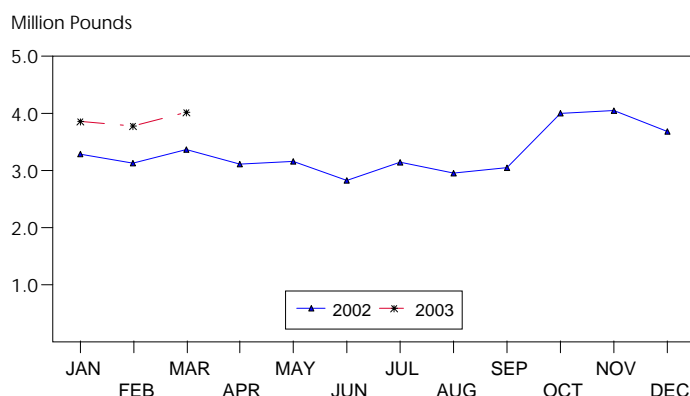
Hawaii fresh papaya utilization is estimated at 4.0 million pounds for March 2003. This was 6 and 19 percent more than last month and March 2002, respectively.

Area in crop totaled 2,255 acres, 5 percent above December 2002, but 9 percent below a year ago. Harvested acres, at 1,735, was up 10 percent from December 2002, but down 10 percent from March 2002.

Weather conditions were mostly dry during the month of March. Major orchards, which are rainfall dependent, experienced only light scattered showers.

Papaya growers are expected to receive an estimated 35.0 cents per pound for fresh fruit in March. This was 9 percent (3.0 cents) higher than last month and 3 percent (1.0 cent) more than a year ago.

FRESH PAPAYA UTILIZATION STATE OF HAWAII, 2002-2003¹



¹ 2002-2003 Preliminary.

HASS

FRESH PAPAYA UTILIZATION, STATE OF HAWAII, MONTH OF: March 2003

Island	Sales				Year ago	Year-to-date	
	Local ¹	Intrastate	Out-of-State	Total fresh		2002	2003
	<i>1,000 pounds</i>						
Hawaii.....	161	1,439	2,000	3,600	2,710	8,075	10,410
Kauai.....	42	3	5	50	115	300	150
Maui/Molokai/Oahu ²	345	0	20	365	550	1,655	1,095
State.....	548	1,442	2,025	4,015	3,375	10,030	11,655

¹ On island of production.

² Combined to avoid disclosure of individual operations.

DONALD A. MARTIN
State Agricultural Statistician

ARTHUR Y. OSAKI
Research Statistician

SANDY K. NAKASONE
Statistical Assistant

PAPAYA ACREAGE, STATE OF HAWAII, 2003 WITH COMPARISONS

Island	Total acreage in crop							
	March		June		September		December	
	2002	2003	2002	2003	2002	2003	2002	2003
Hawaii.....	2,200	2,015	1,920		1,925		1,925	
Kauai.....	80	55	75		60		55	
Maui/Molokai/Oahu.....	210	185	210		185		170	
State.....	2,490	2,255	2,205		2,170		2,150	
Total bearing acres								
Hawaii.....	1,700	1,600	1,490		1,385		1,465	
Kauai.....	60	40	60		40		35	
Maui/Molokai/Oahu.....	170	95	175		75		80	
State.....	1,930	1,735	1,725		1,500		1,580	

FRESH PAPAYA FARM PRICE, STATE OF HAWAII, 2002-2003

Year	Jan.	Feb.	Mar.	Apr.	May	June	July	Aug.	Sep.	Oct.	Nov.	Dec.	Average
	<i>Cents per pound</i>												
2002 ¹	34.0	35.0	34.0	38.0	42.0	40.0	35.0	34.0	30.0	27.0	26.0	26.0	
2003 ¹	28.0	32.0	35.0										

¹Preliminary.